

APPROX. WEIGHT (LBS)
494

ECO No	DESCRIPTION	REV BY	DATE
M10377	REPLACED CAPPANEL-572 WITH 572C	AB	09/05/18

D

C

B

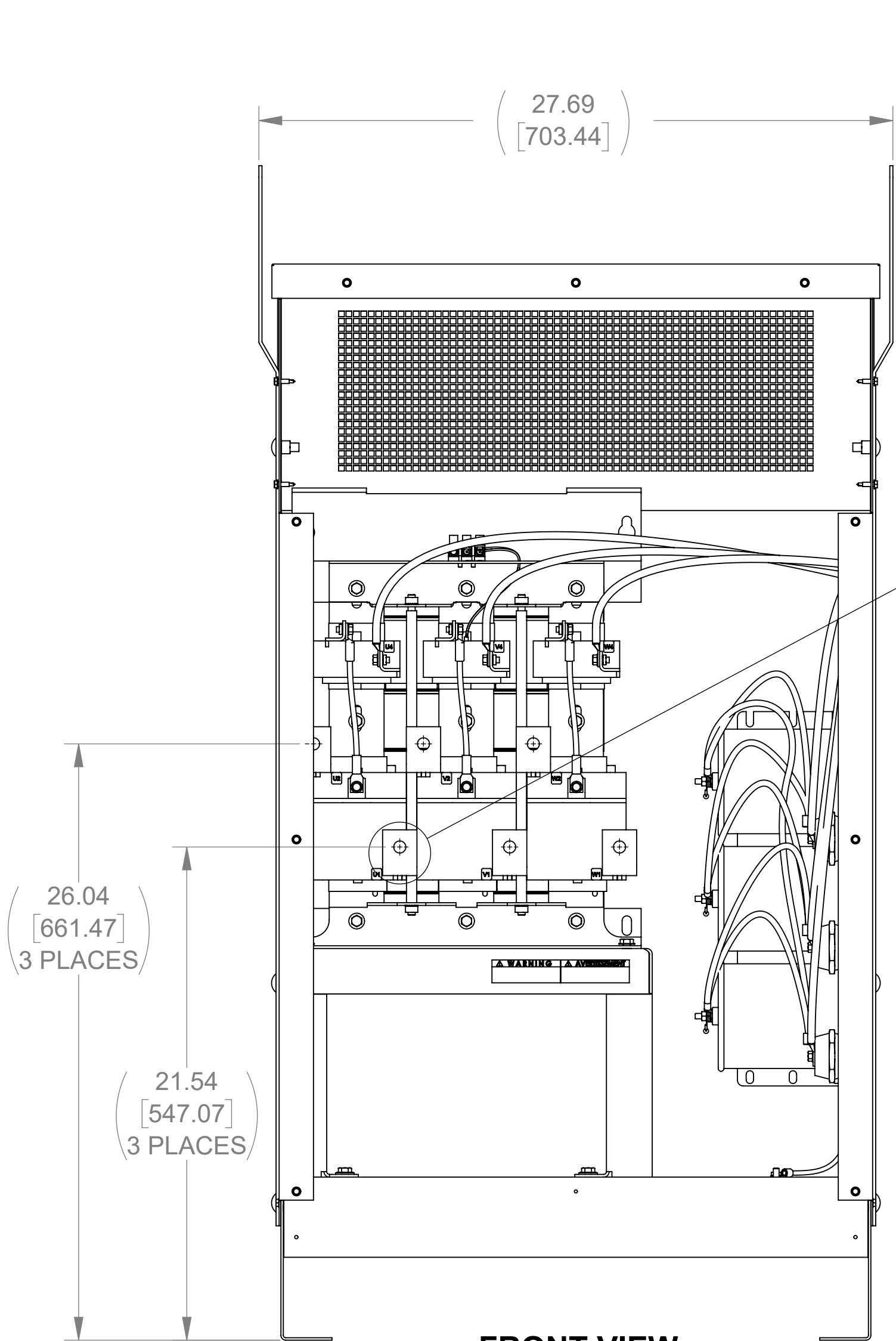
A

D

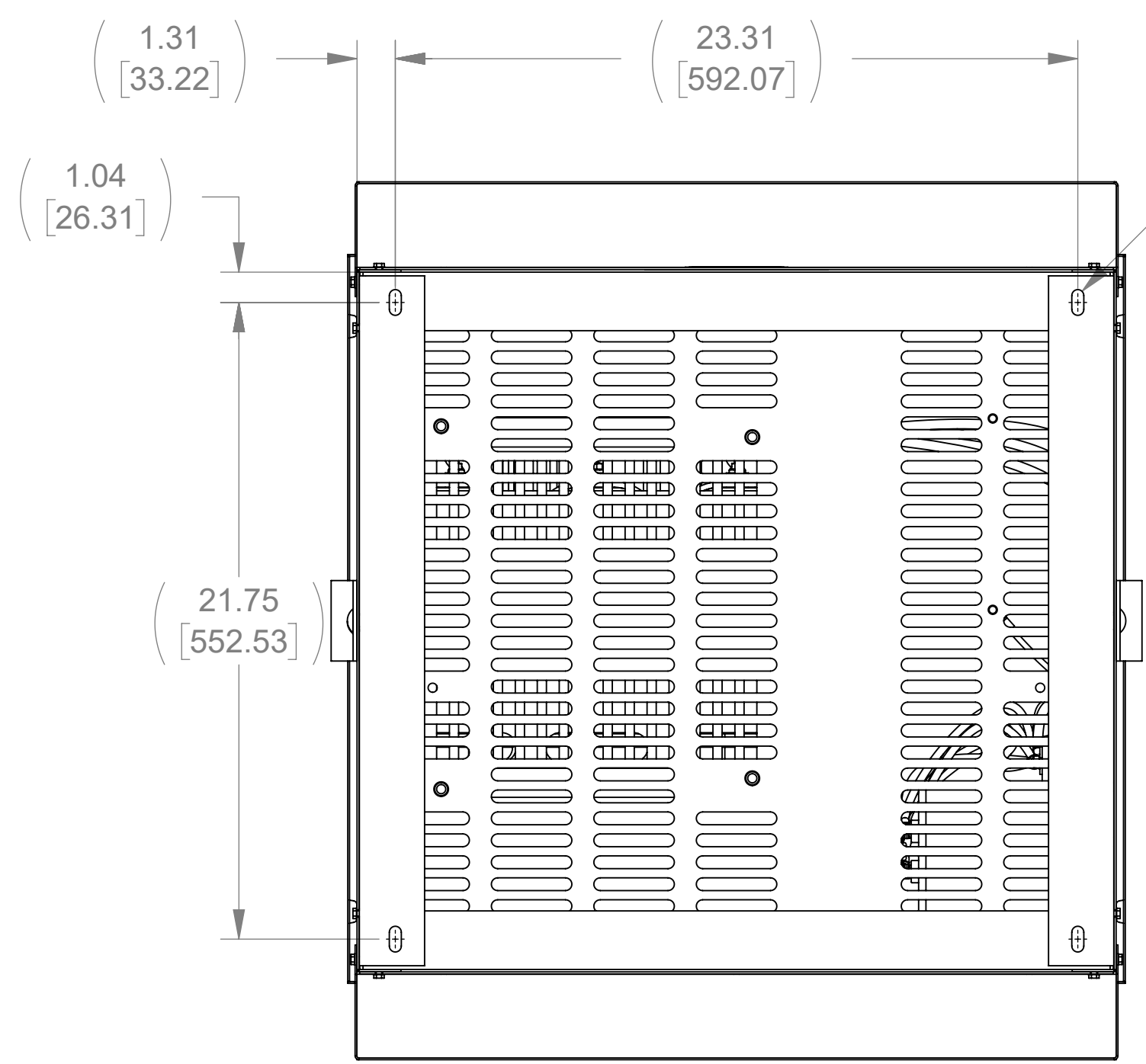
C

B

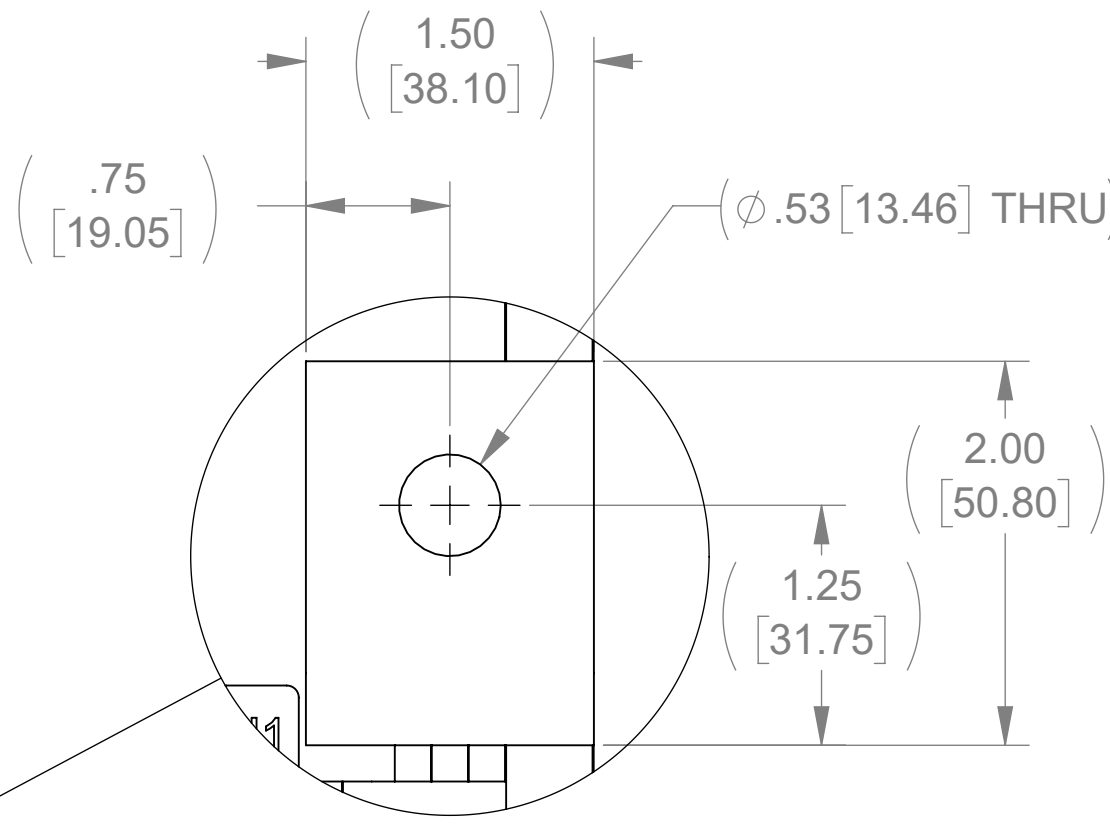
A



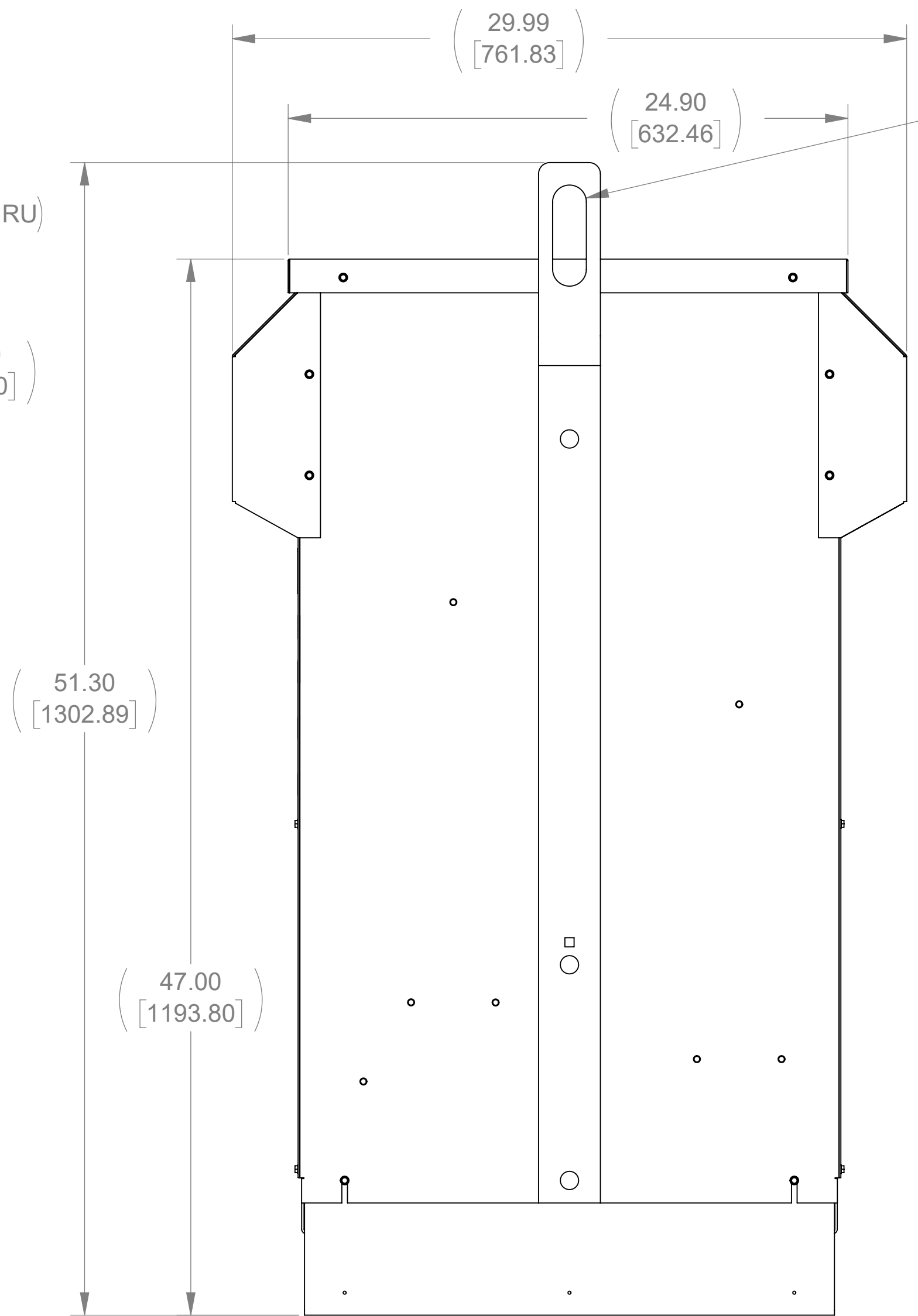
FRONT VIEW
(WITHOUT FRONT PANEL)



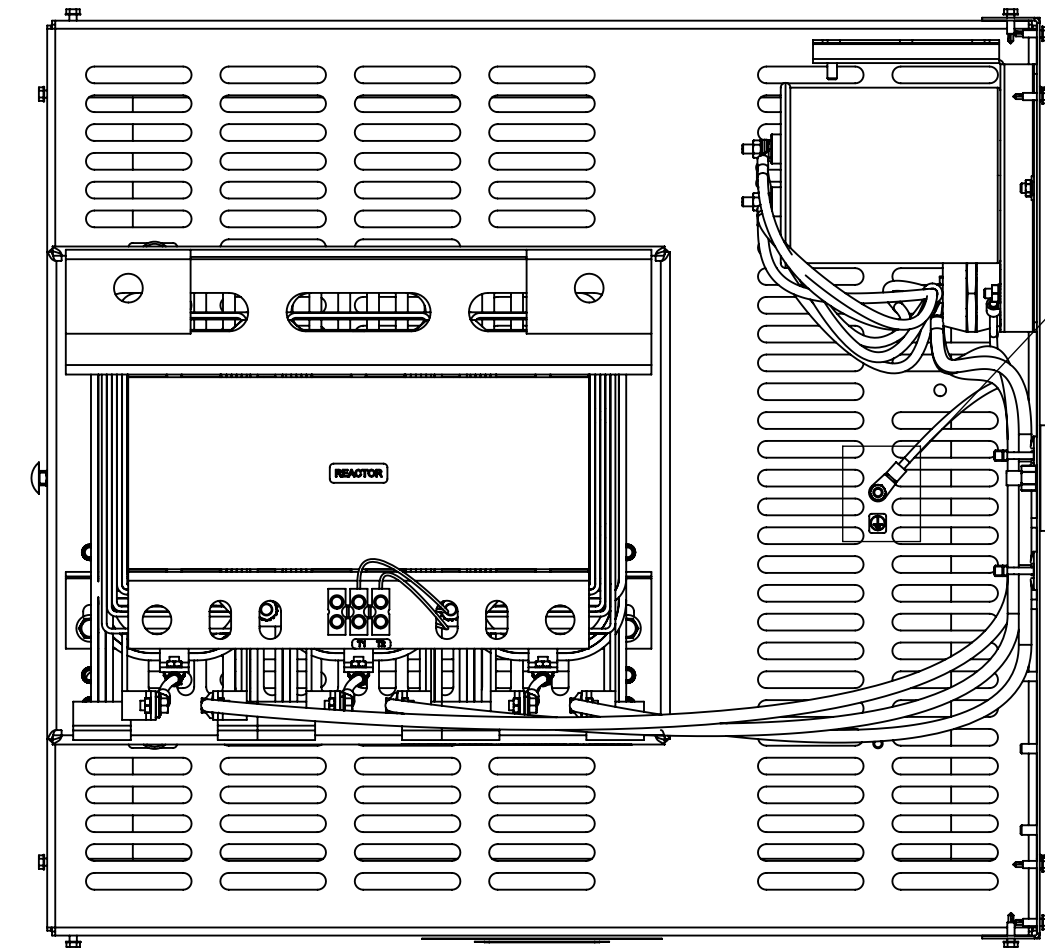
BOTTOM VIEW



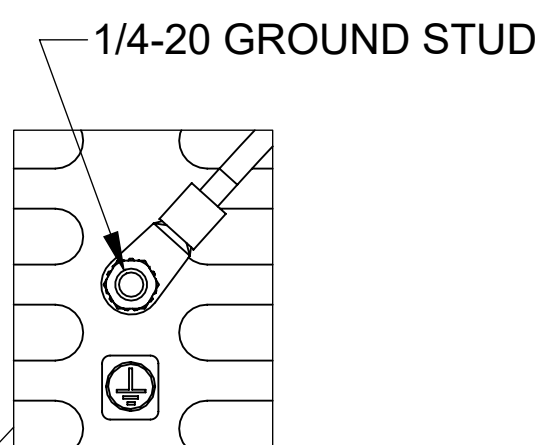
DETAIL A
(6 PLACES)



SIDE VIEW

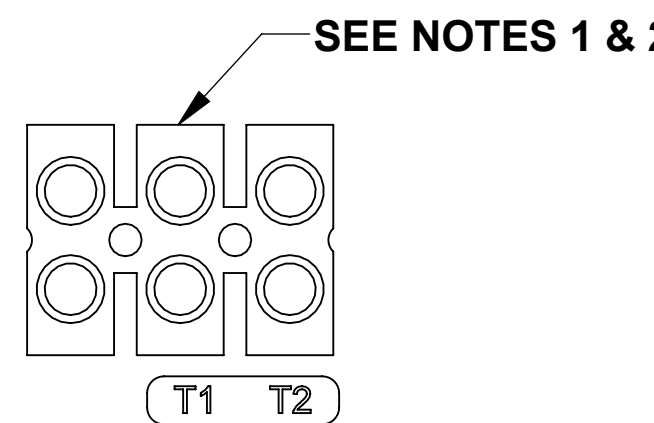


TOP VIEW
(TOP PANEL REMOVED)

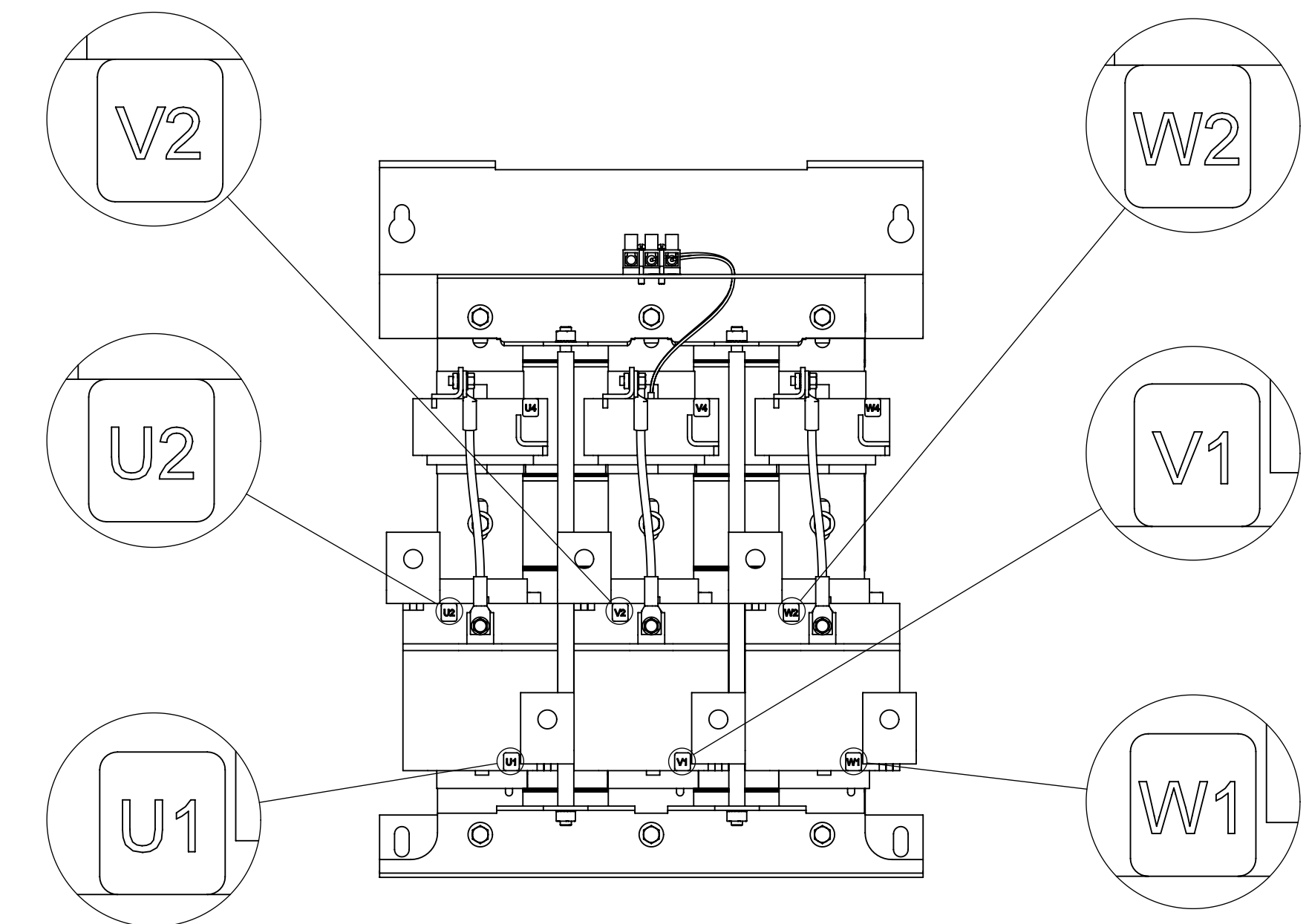


1/4-20 GROUND STUD

Ø 1.50 [38.10]
X 4.50 SLOT
2 PLACES




CUSTOMER CONNECTION
DETAIL (THERMAL)



CUSTOMER CONNECTION
DETAIL VIEW

- NOTES:**
1. TERMINAL SCREW TIGHTENING TORQUE: 16 IN/LBS, MAX.
 2. WIRE RANGE: 4 - 14 AWG.

THE COMPONENT, PART OR ASSEMBLY DESCRIBED IN THIS DOCUMENT MUST COMPLY WITH THE EU(EUROPEAN UNION) DIRECTIVE RoHS2		MATERIAL		CONFIDENTIAL AND PROPRIETARY INFORMATION THIS DOCUMENT CONTAINS CONFIDENTIAL AND PROPRIETARY INFORMATION OF MTE CORPORATION AND MAY NOT BE USED, COPIED OR DISCLOSED TO OTHERS EXCEPT WITH THE AUTHORIZED WRITTEN PERMISSION OF MTE CORPORATION			
CONTAINS <0.1% OF ANY SVHC BY WEIGHT PER REACH REGULATION				DESCRIPTION			
UNLESS OTHERWISE SPECIFIED DIMENSIONS ARE IN INCHES [MM] TOLERANCES ARE: ANGLES: ± 1 ° 1 PLACE .X: ± .1 [2.5] 2 PLACE .XX: ± .03 [0.76] 3 PLACE .XXX: ± .010 [0.254]		 N83 W13330 Leon Road Menomonee Falls, WI 53051 USA 800.455-4683 262.253.8200		MATRIX AP 208A 600V 60HZ FILTER, NEMA 3R ENCL			
		DRAWN SU	DATE 05/06/13	SIZE D	DWG No. CD MAPW0208E	REV 04	
		CHECKED AB	DATE 09/05/18				
		APPROVED JG	DATE 10/16/18	SCALE 1:5	SHEET 1 OF 1		