

APPROX. WEIGHT  
(LBS)  
449

ECO No	DESCRIPTION	REV BY	DATE
M9806	CHANGED CAPPANEL-568 TO 568C	MN	05/26/16

D

C

B

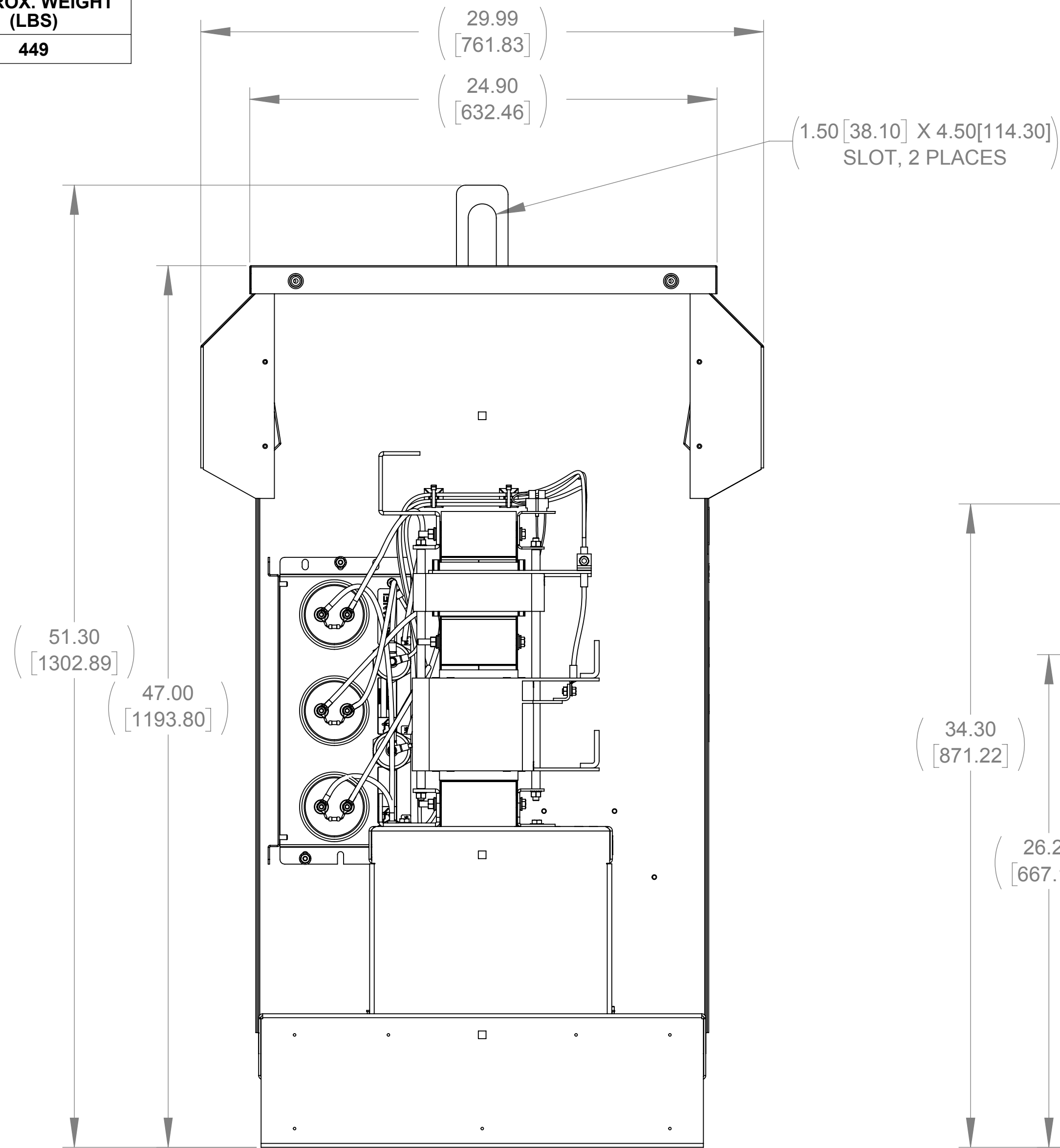
A

D

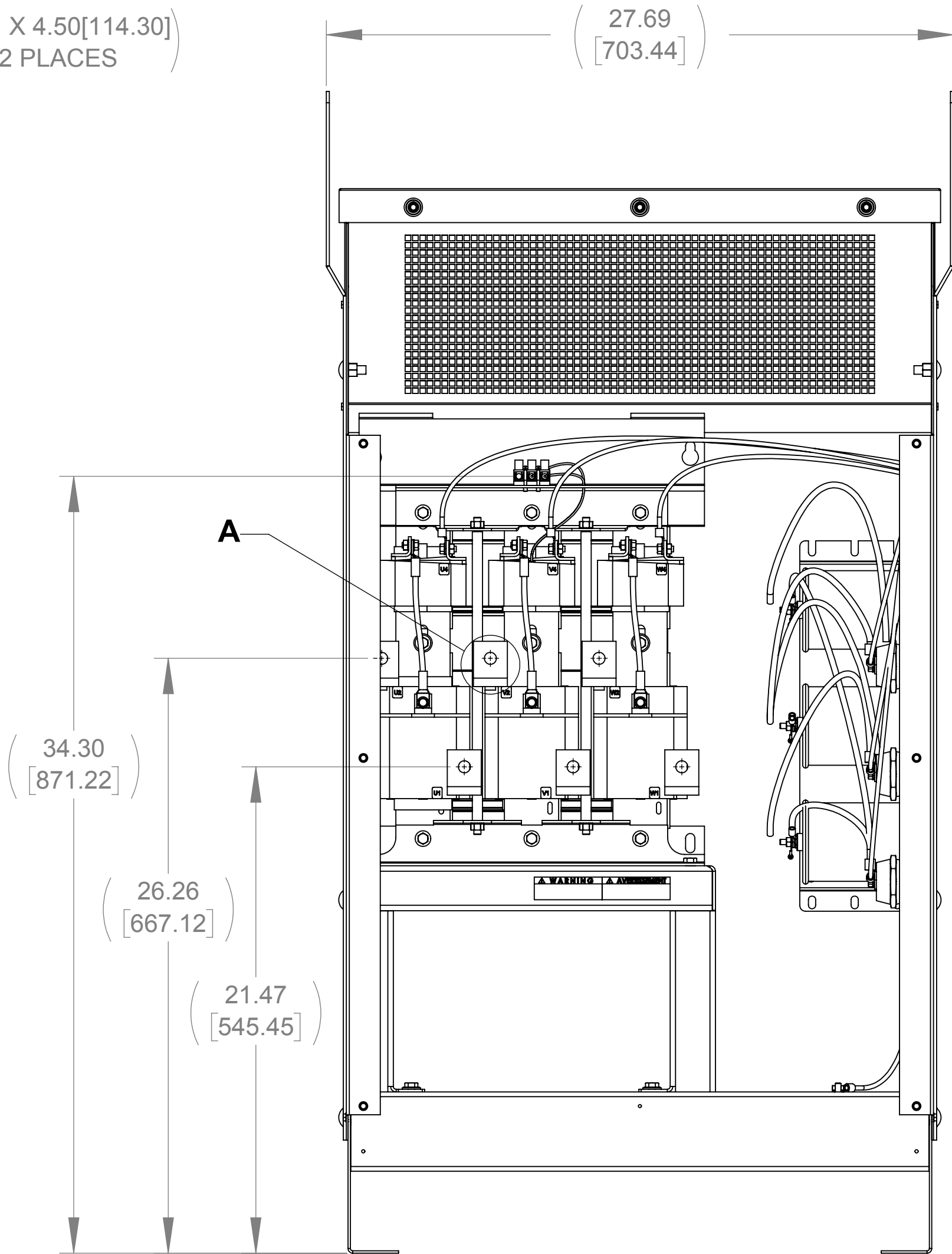
C

B

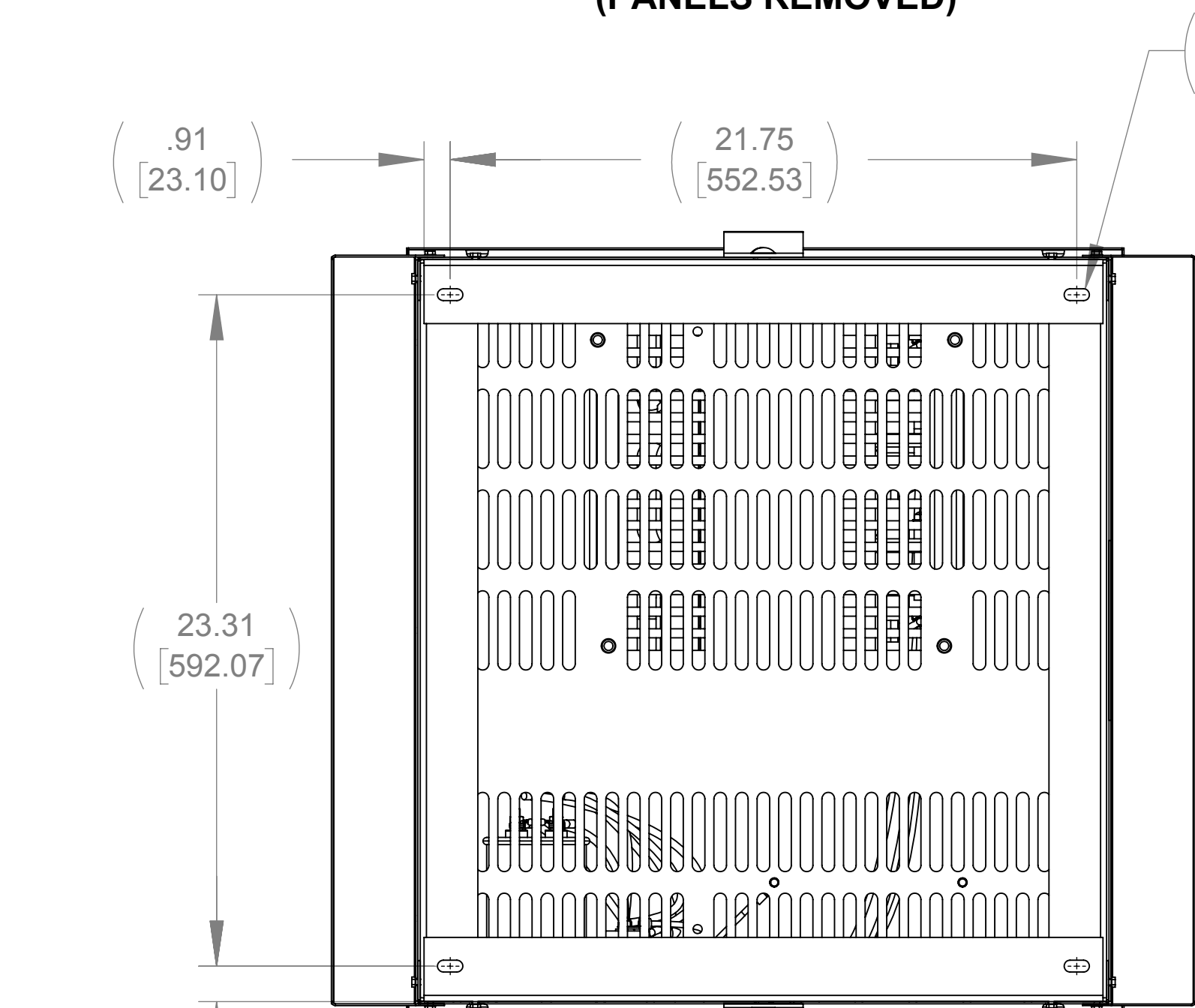
A



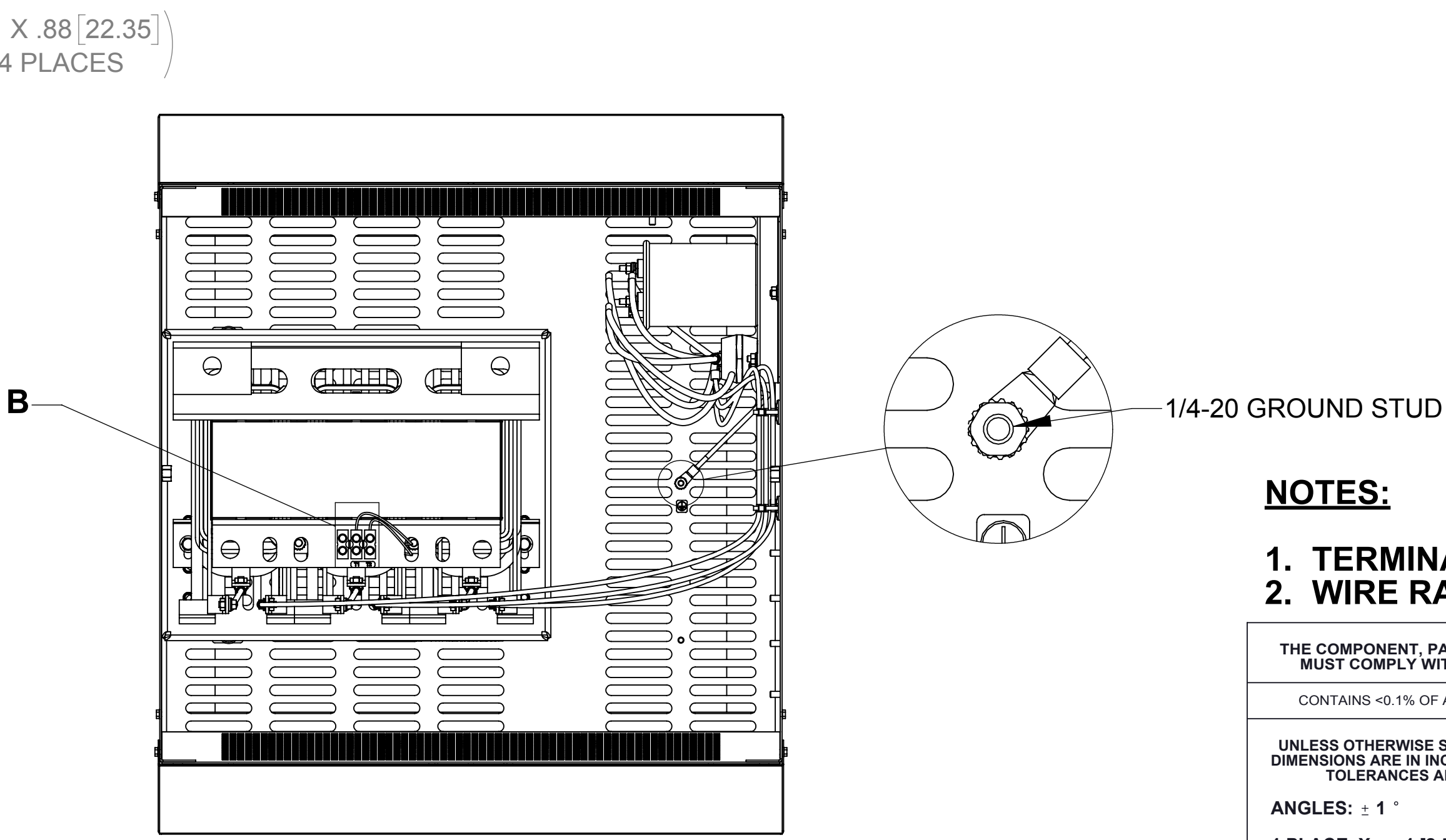
SIDE VIEW  
(PANELS REMOVED)



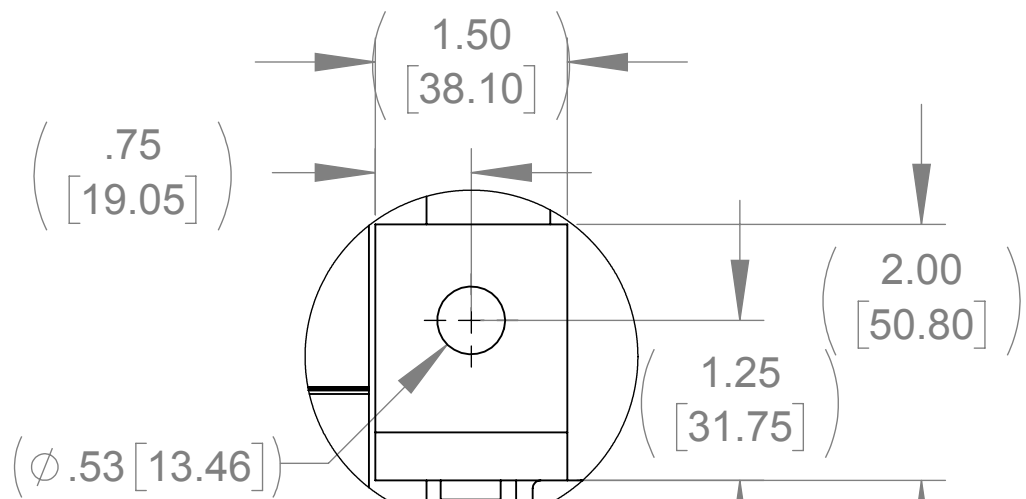
FRONT VIEW  
(PANELS REMOVED)



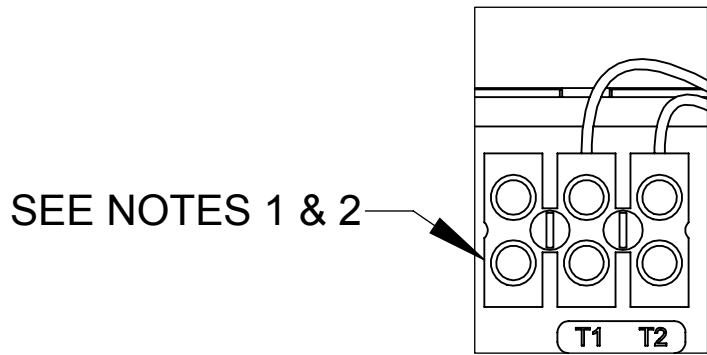
BOTTOM VIEW



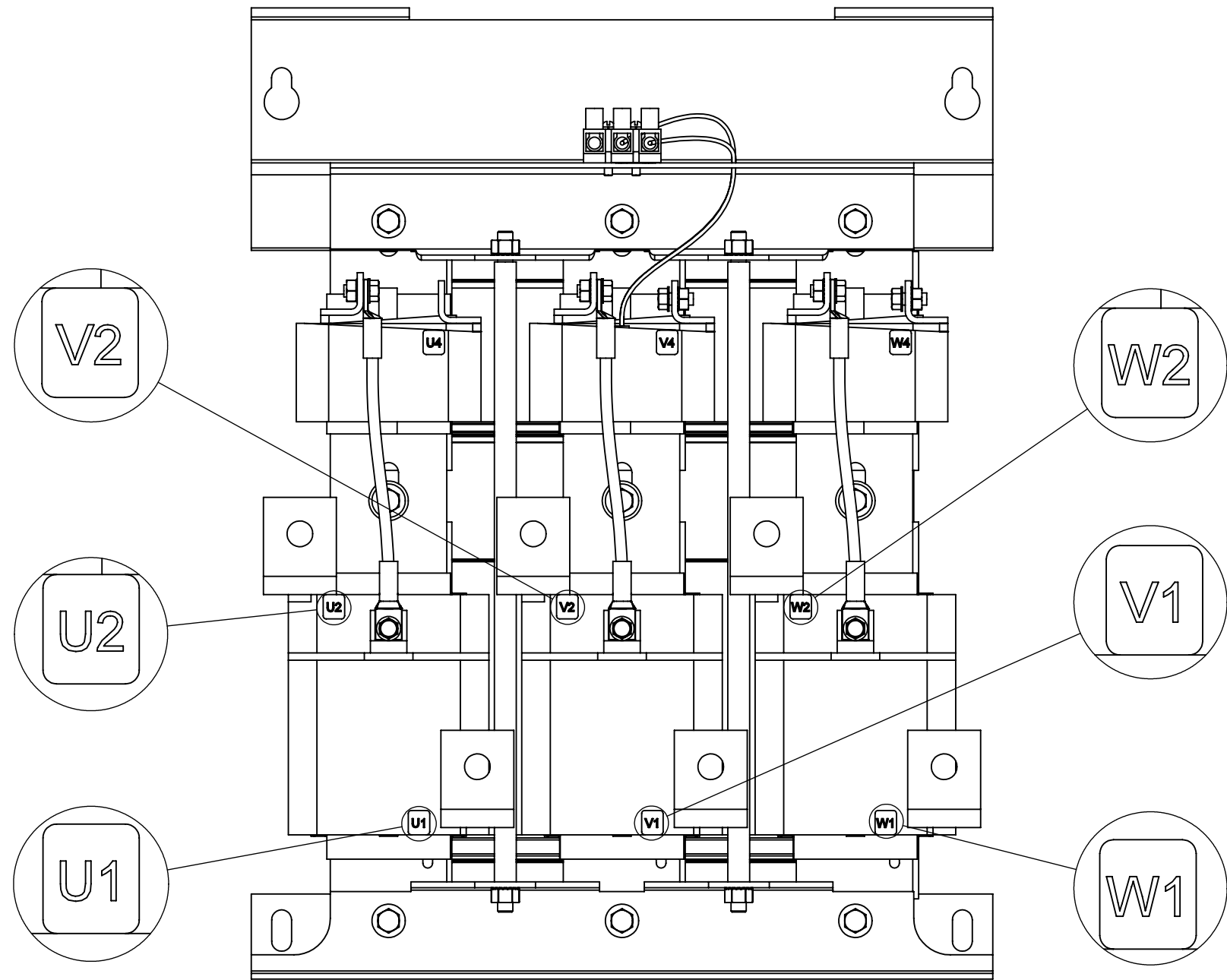
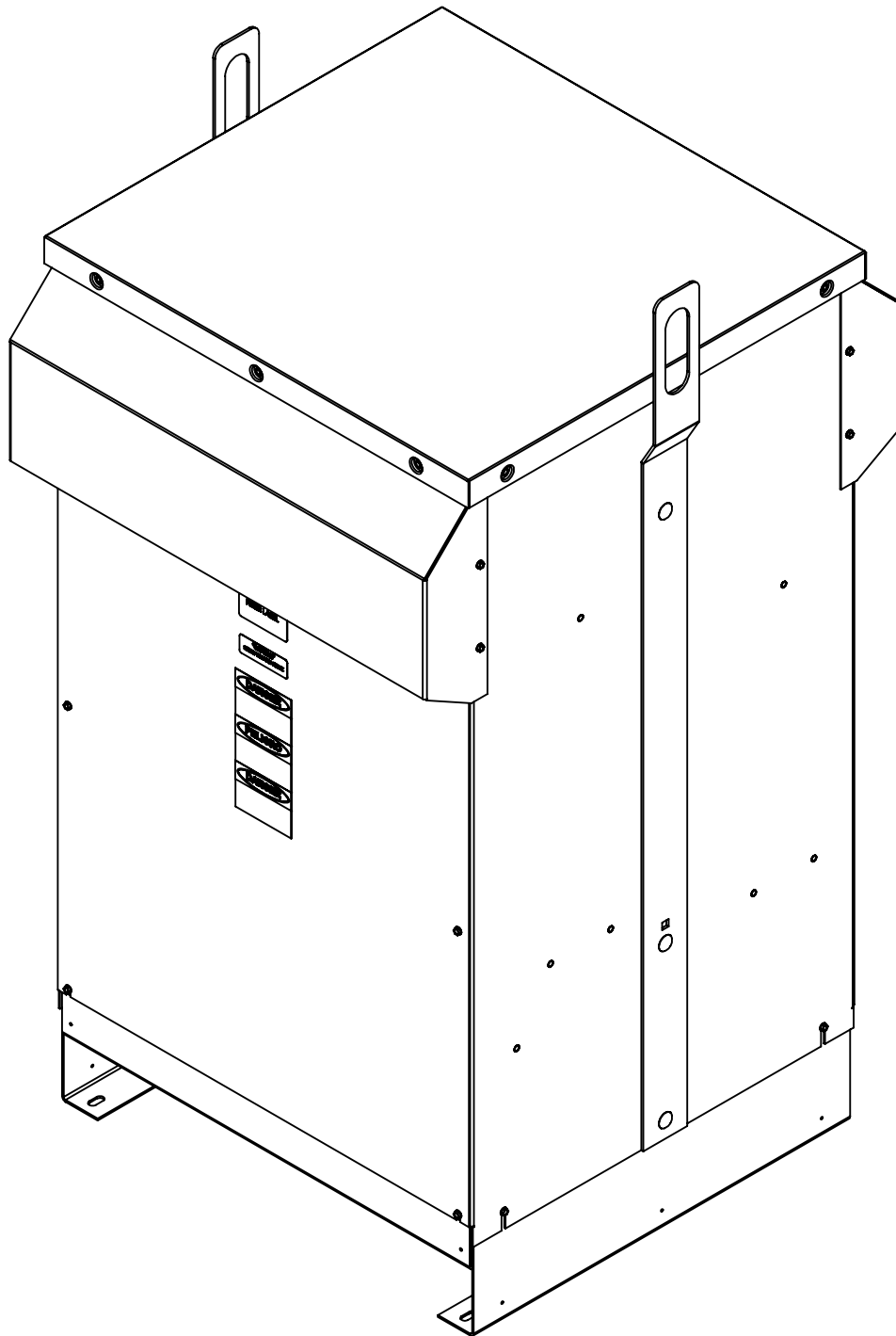
TOP VIEW  
(PANELS REMOVED)



DETAIL A  
(6 PLACES)



DETAIL B  
CUSTOMER CONNECTION  
DETAIL VIEW (THERMAL)



CUSTOMER CONNECTION  
DETAIL VIEW

NOTES:

1. TERMINAL SCREW TIGHTENING TORQUE: 16 IN/LBS.
2. WIRE RANGE: 4-14 AWG.

THE COMPONENT, PART OR ASSEMBLY DESCRIBED IN THIS DOCUMENT MUST COMPLY WITH THE EU(EUROPEAN UNION) DIRECTIVE RoHS2		MATERIAL		CONFIDENTIAL AND PROPRIETARY INFORMATION THIS DOCUMENT CONTAINS CONFIDENTIAL AND PROPRIETARY INFORMATION OF MTE CORPORATION AND MAY NOT BE USED, COPIED OR DISCLOSED TO OTHERS EXCEPT WITH THE AUTHORIZED WRITTEN PERMISSION OF MTE CORPORATION			
CONTAINS <0.1% OF ANY SVHC BY WEIGHT PER REACH REGULATION							
<div>UNLESS OTHERWISE SPECIFIED DIMENSIONS ARE IN INCHES [MM] TOLERANCES ARE:</div> <div>ANGLES: ± 1 °</div> <div>1 PLACE .X: ± .1 [2.5]</div> <div>2 PLACE .XX: ± .03 [0.76]</div> <div>3 PLACE .XXX: ± .010 [0.254]</div> <div><div><div>MTE</div><div>AN BL POWER ELECTRONICS COMPANY</div></div><div>N83 W13330 Leon Road Menomonee Falls, WI 53051 USA 800.455-4683 262.253-8200</div></div>		DRAWN		DATE		DESCRIPTION  MATRIX AP 128A 600V 60HZ FILTER, NEMA 3R ENCLOSURE	
		SU		05/01/13			
		CHECKED		DATE			
		JM		06/01/16		SIZE D	DWG No. CD MAPW0128E
APPROVED		DATE					
JM		06/01/16		SCALE 1:5	SHEET 1 OF 1		