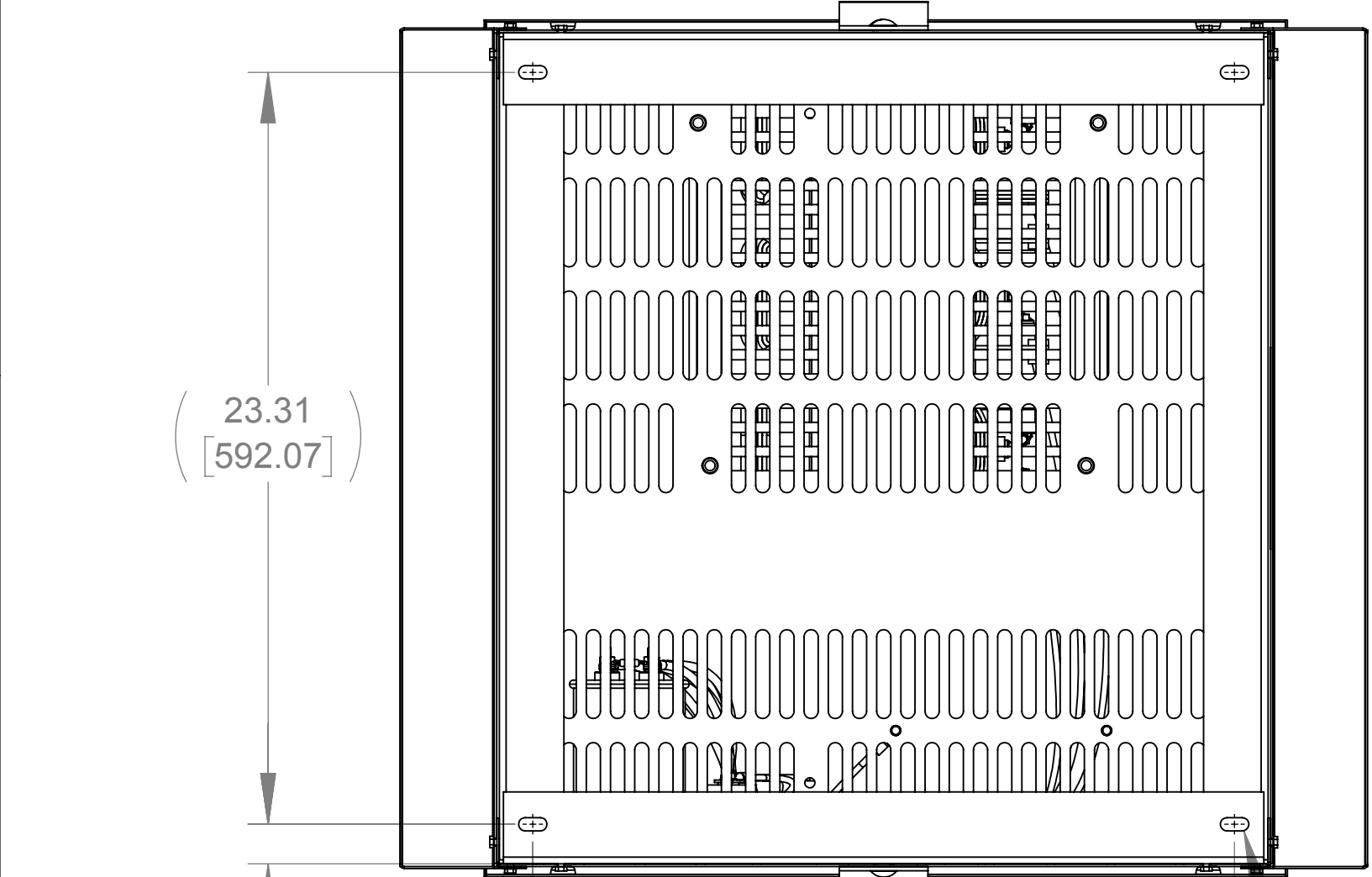
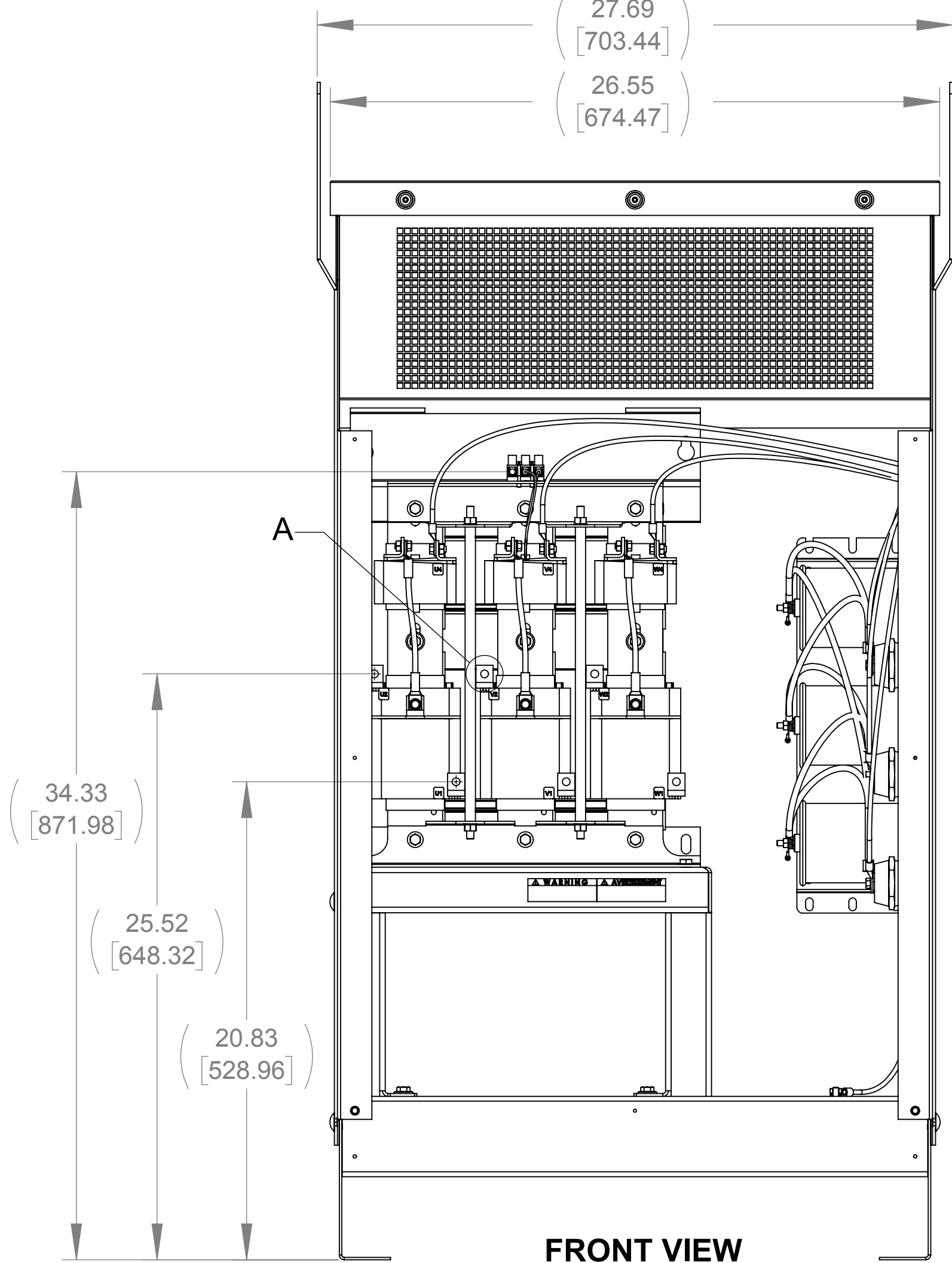


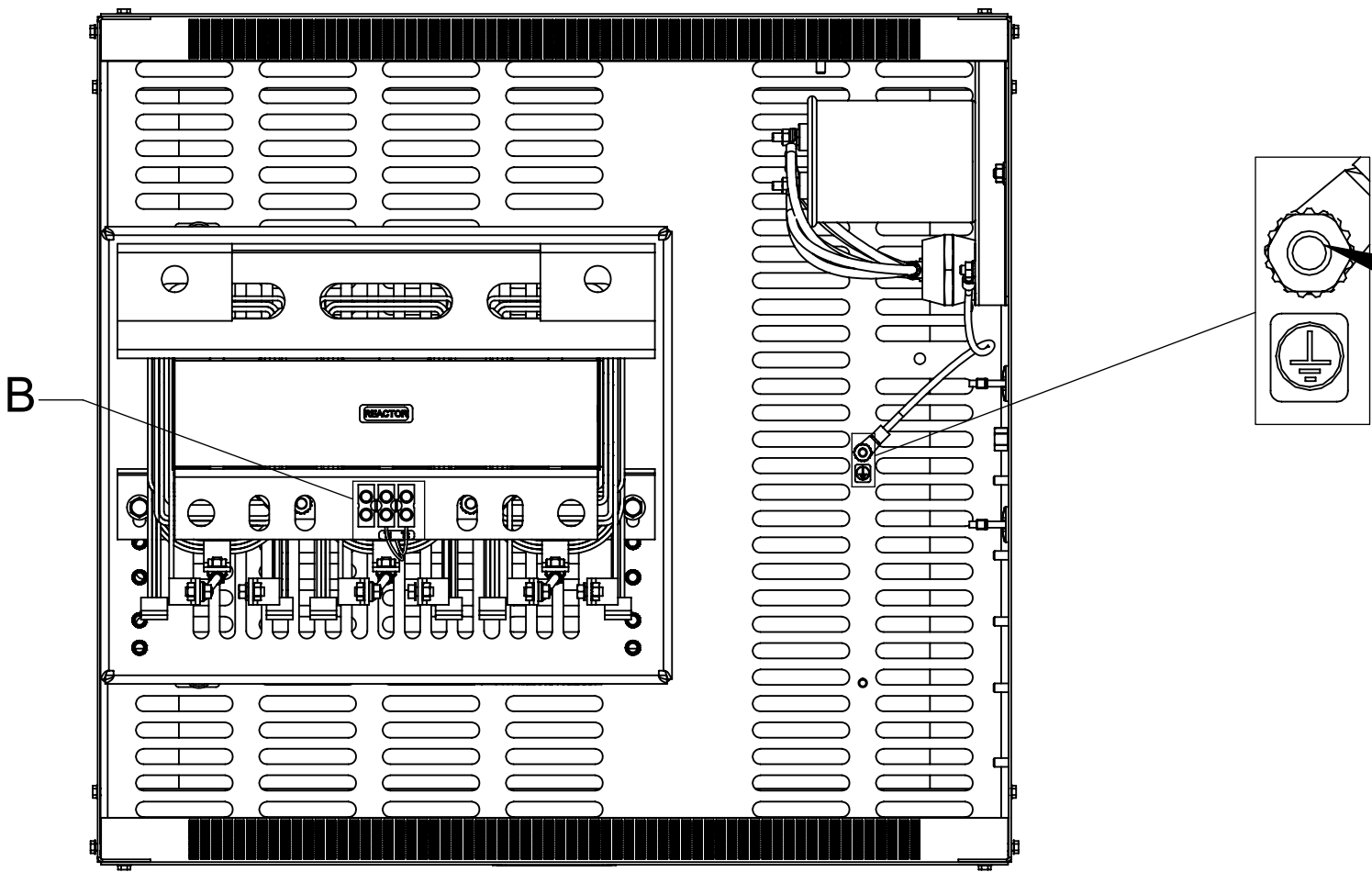
SIDE VIEW
(WITH PANELS REMOVED)



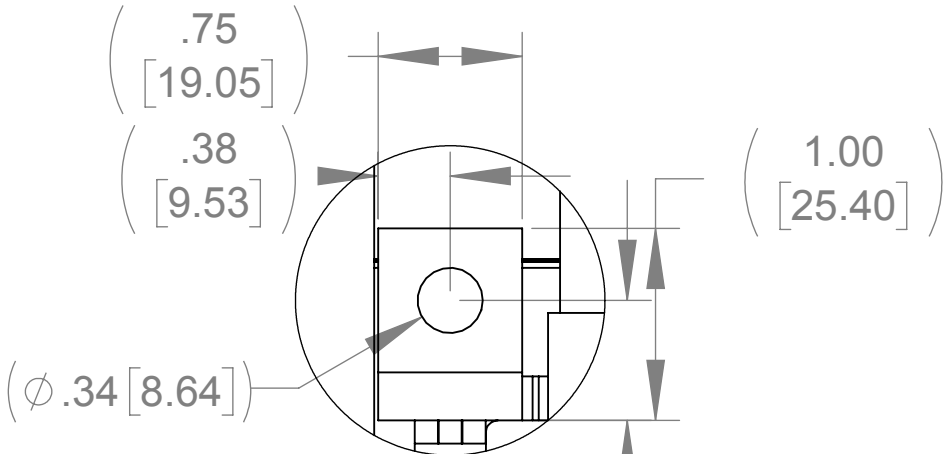
BOTTOM VIEW



FRONT VIEW
(WITH PANELS REMOVED)

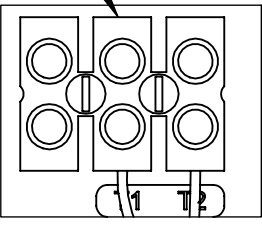


TOP VIEW
(PANELS REMOVED & ROTATED 90°)

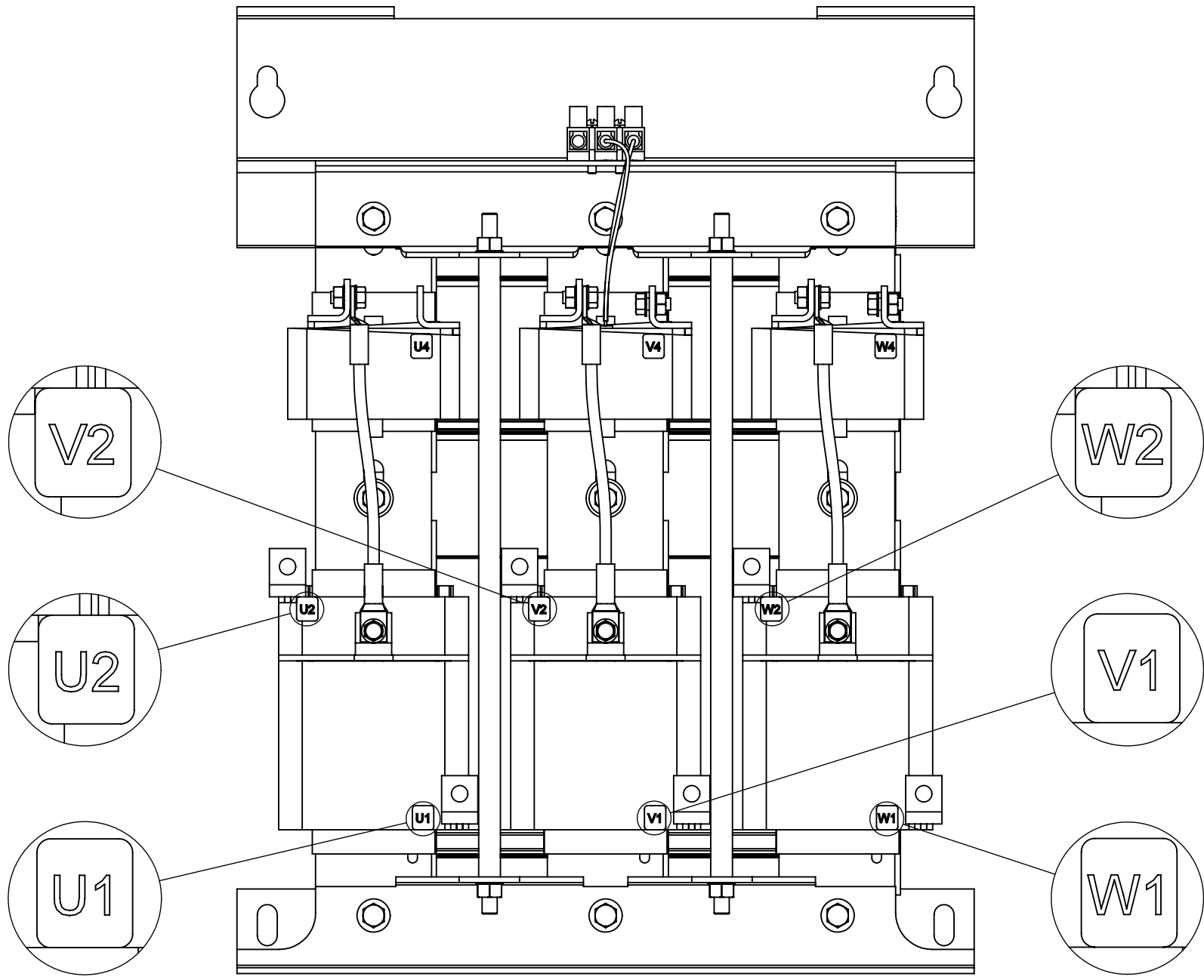
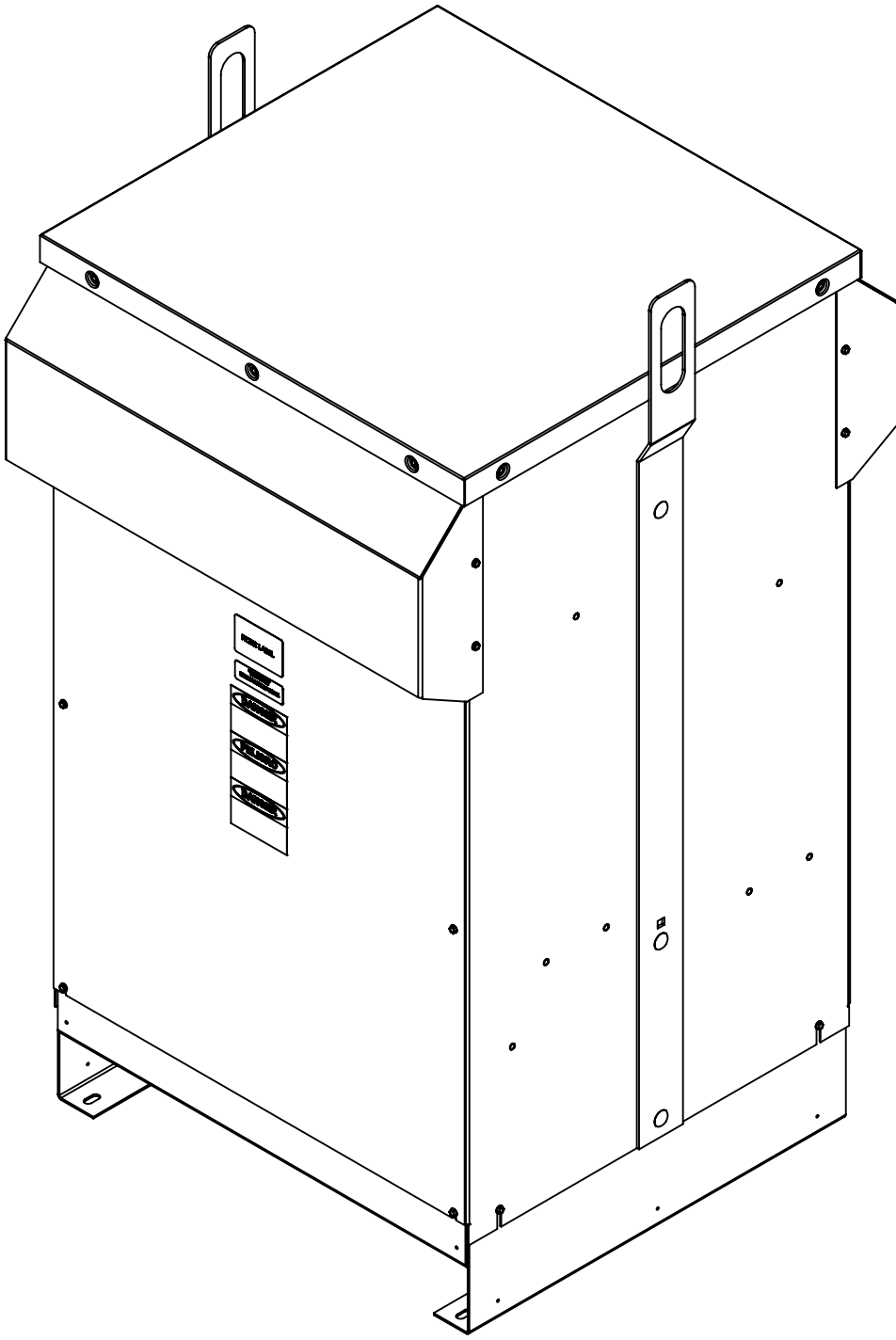


DETAIL A
(6 PLACES)

SEE NOTES 1 & 2



DETAIL B
CUSTOMER CONNECTION
DETAIL VIEW (THERMAL)



CUSTOMER CONNECTION
DETAIL VIEW

NOTES:

1. TERMINAL SCREW TIGHTENING TORQUE: 16 IN/LBS.
2. WIRE RANGE: 4-14 AWG.

THE COMPONENT, PART OR ASSEMBLY DESCRIBED IN THIS DOCUMENT MUST COMPLY WITH THE EU (EUROPEAN UNION) DIRECTIVE RoHS2		MATERIAL		CONFIDENTIAL AND PROPRIETARY INFORMATION THIS DOCUMENT CONTAINS CONFIDENTIAL AND PROPRIETARY INFORMATION OF MTE CORPORATION AND MAY NOT BE USED, COPIED OR DISCLOSED TO OTHERS EXCEPT WITH THE AUTHORIZED WRITTEN PERMISSION OF MTE CORPORATION	
CONTAINS <0.1% OF ANY SVHC BY WEIGHT PER REACH REGULATION				DESCRIPTION	
UNLESS OTHERWISE SPECIFIED DIMENSIONS ARE IN INCHES [MM] TOLERANCES ARE: ANGLES: ± 1 ° 1 PLACE .X: ± .1 [2.5] 2 PLACE .XX: ± .03 [0.76] 3 PLACE .XXX: ± .010 [0.254]		MTE POWER QUALITY. SOLVED. N83 W13330 Leon Road Menomonee Falls, WI 53051 USA 800.455-4683 262.253-8200		MATRIX AP 103A 600V 60HZ FILTER, NEMA 3R ENCLOSURE	
		DRAWN SU	DATE 04/26/13	SIZE D	DWG No. CD MAPW0103E
		CHECKED JM	DATE 02/13/17	REV 05	
		APPROVED JM	DATE 02/13/17	SCALE 1:5	SHEET 1 OF 1