

APPROX. WEIGHT (LBS)
235

ECO No	DESCRIPTION	REV BY	DATE
M9073	UPDATE TO CURRENT DRAWING STANDARDS	MN	04/07/14

D

C

B

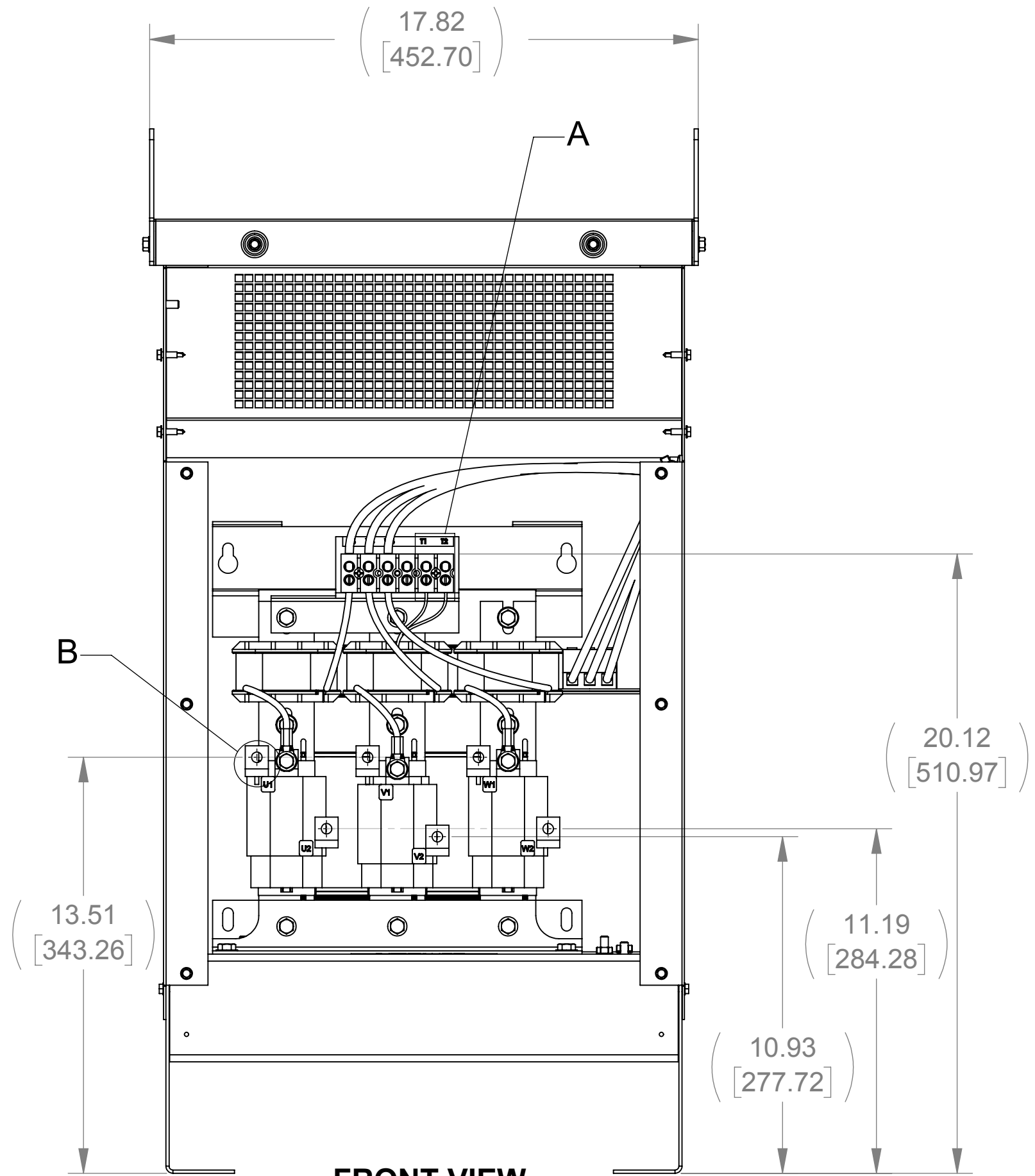
A

D

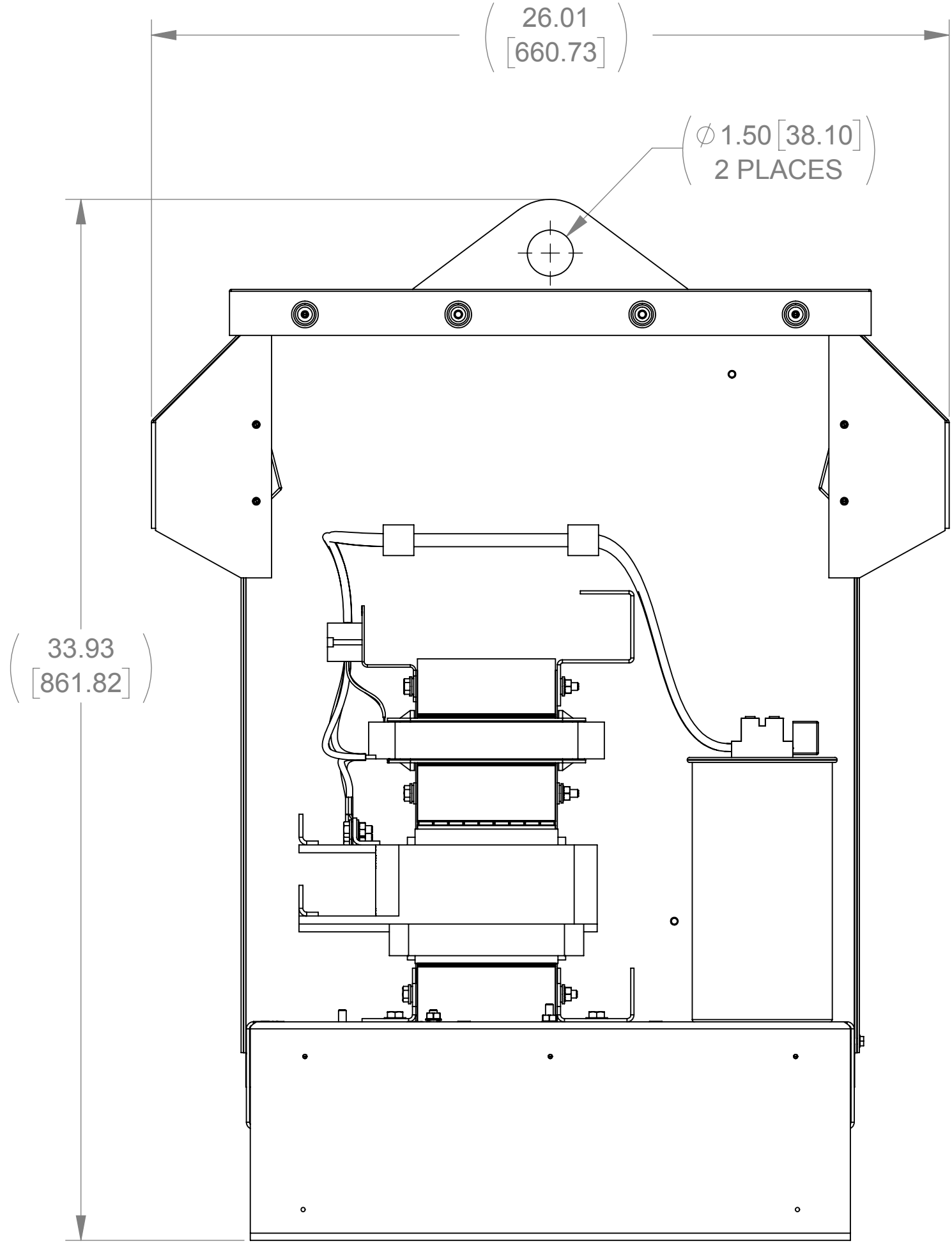
C

B

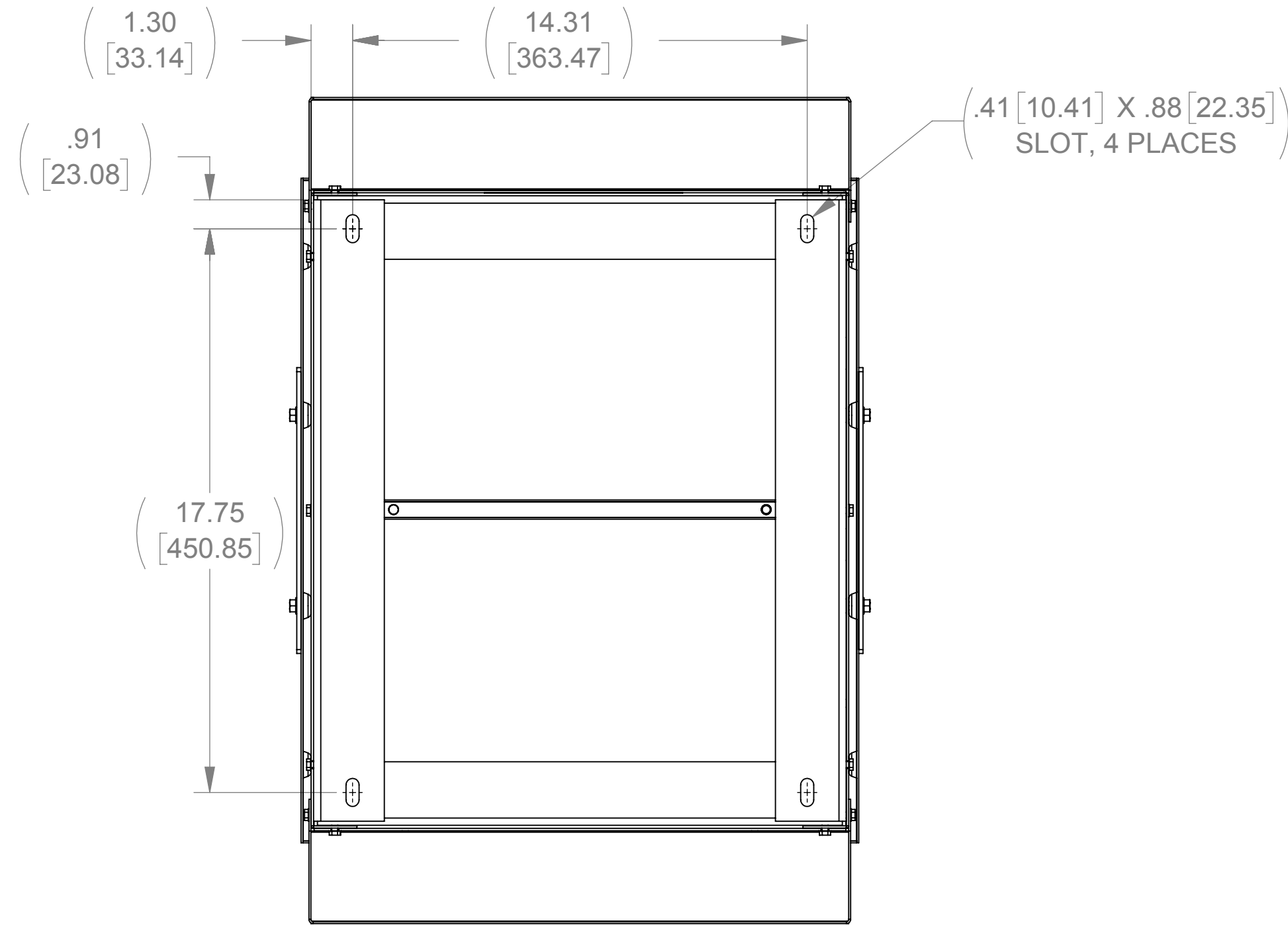
A



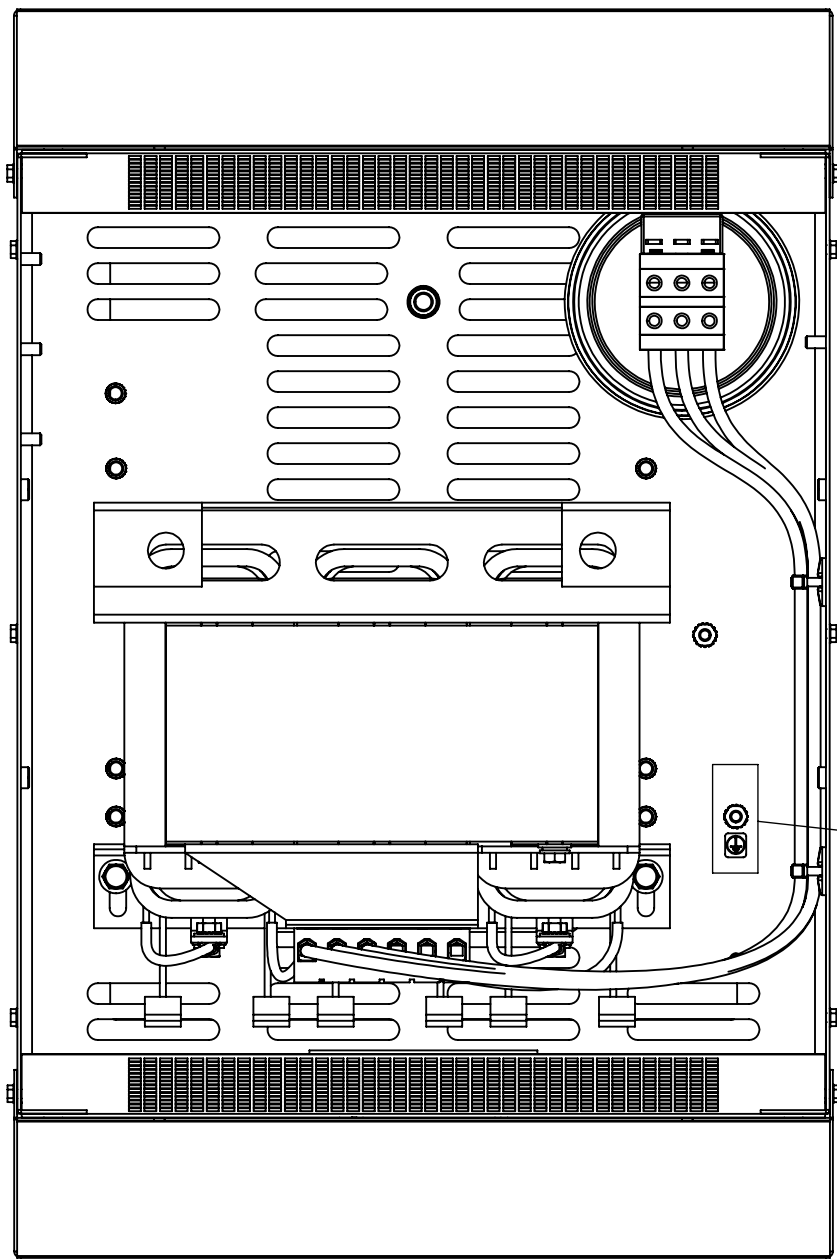
FRONT VIEW
(PANELS REMOVED)



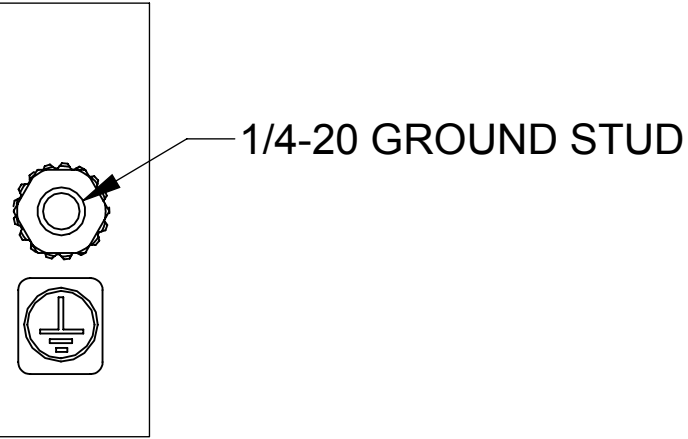
SIDE VIEW
(PANELS REMOVED)



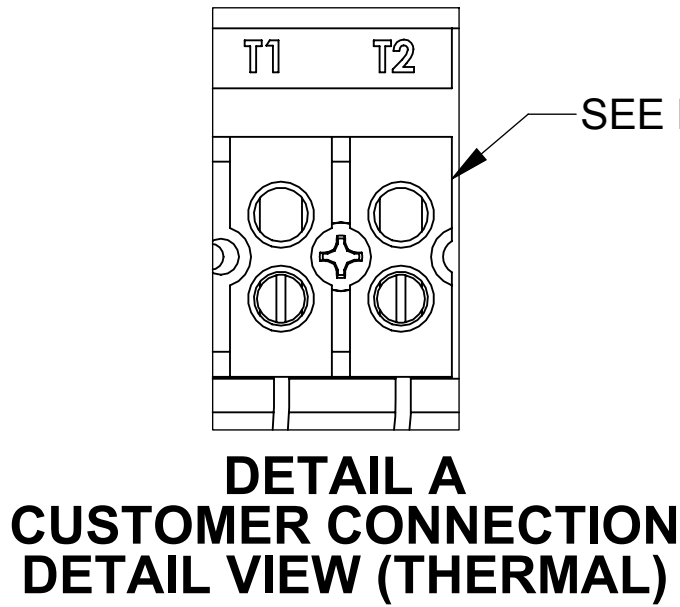
BOTTOM VIEW



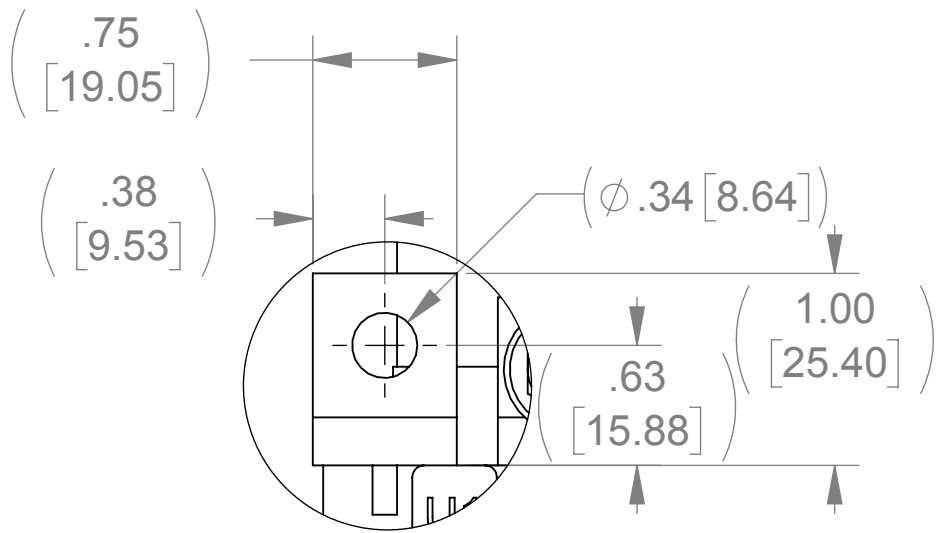
TOP VIEW
(PANELS REMOVED)



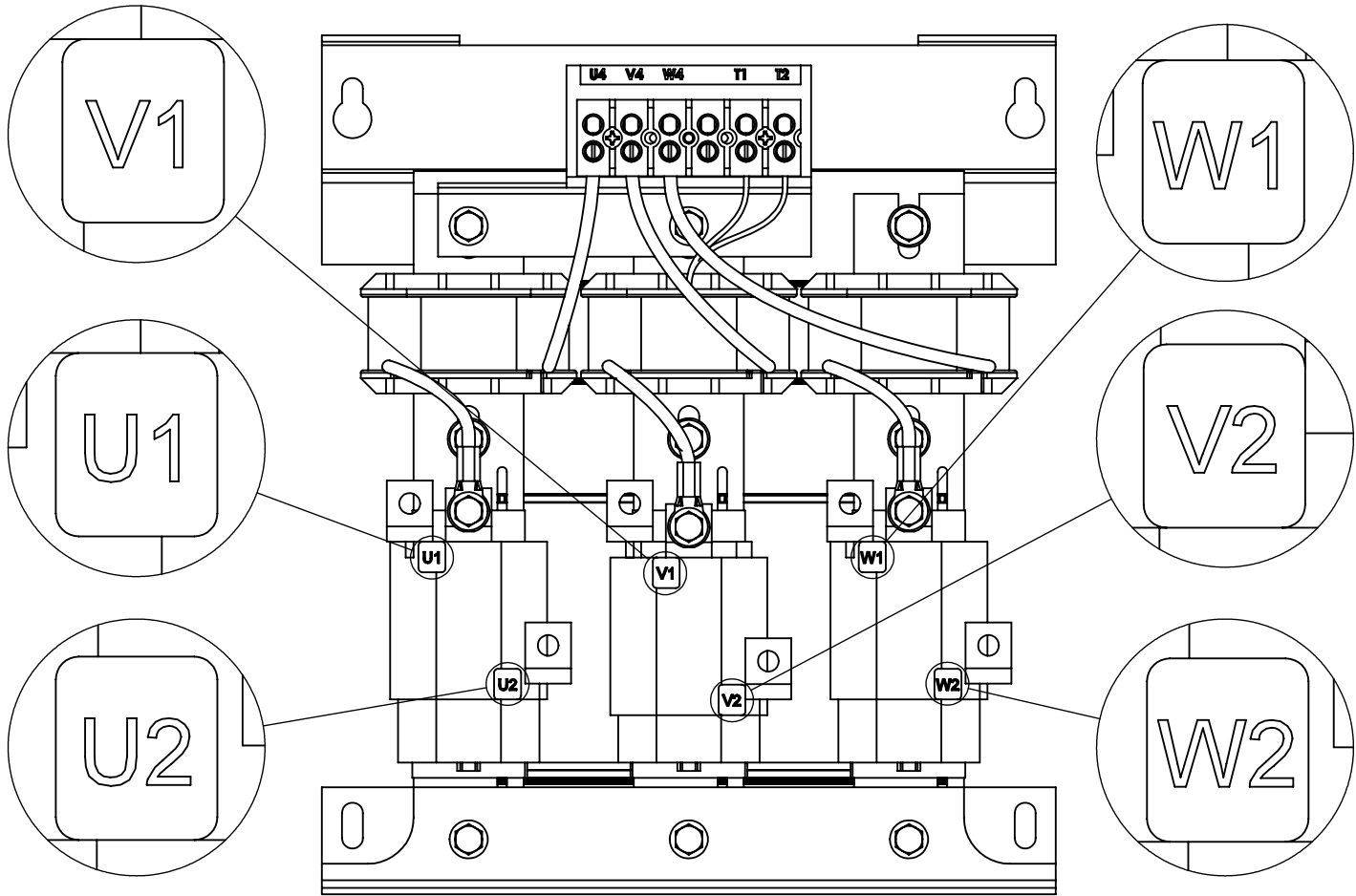
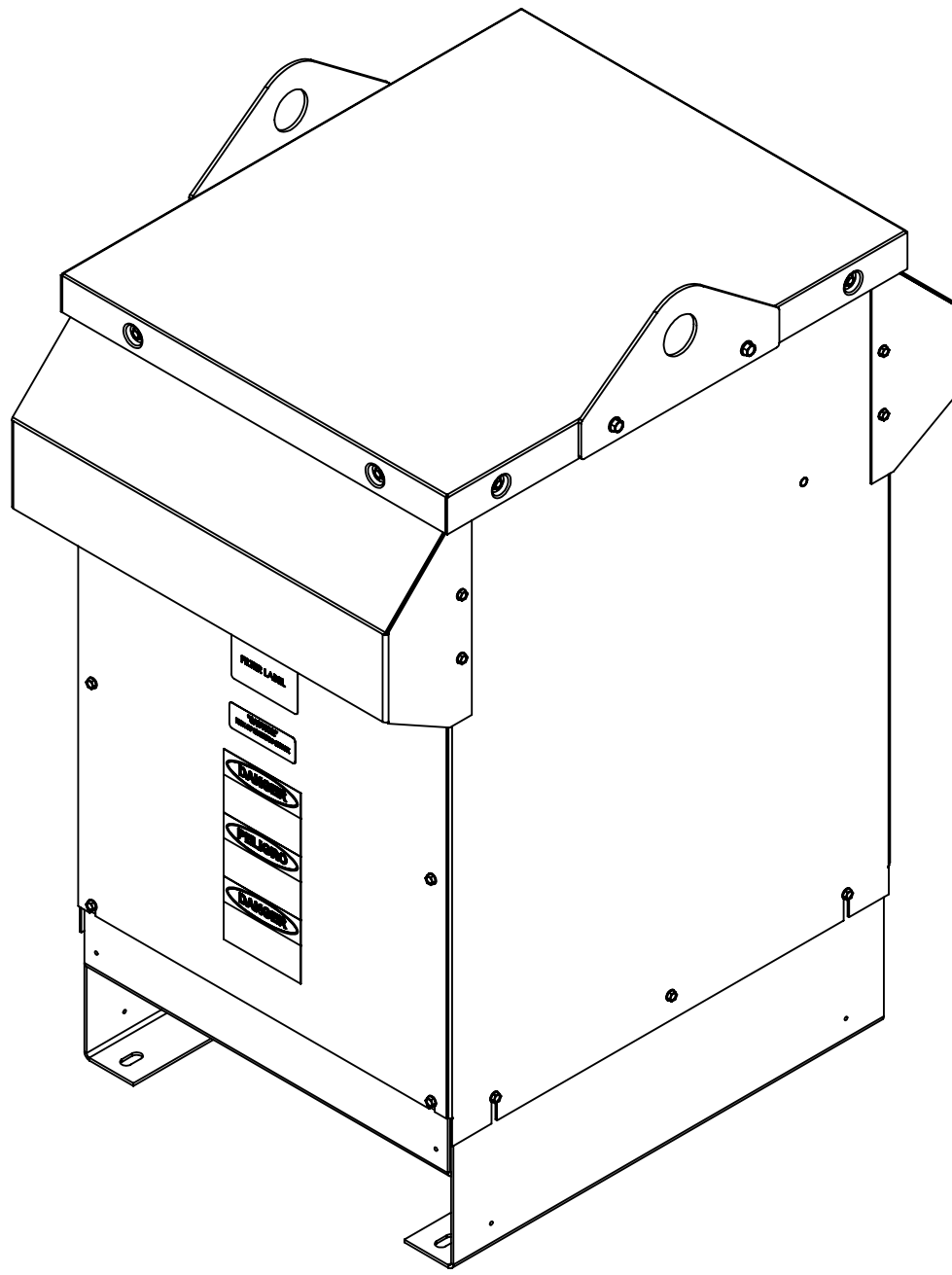
1/4-20 GROUND STUD



DETAIL A
CUSTOMER CONNECTION
DETAIL VIEW (THERMAL)




DETAIL B
(6 PLACES)



CUSTOMER CONNECTION
DETAIL VIEW

NOTES:

1. TERMINAL SCREW TIGHTENING TORQUE: 16 IN/LBS, MAX.
2. WIRE RANGE: 4-14 AWG.

THE COMPONENT, PART OR ASSEMBLY DESCRIBED IN THIS DOCUMENT MUST COMPLY WITH THE EU(EUROPEAN UNION) DIRECTIVE RoHS2		MATERIAL		CONFIDENTIAL AND PROPRIETARY INFORMATION THIS DOCUMENT CONTAINS CONFIDENTIAL AND PROPRIETARY INFORMATION OF MTE CORPORATION AND MAY NOT BE USED, COPIED OR DISCLOSED TO OTHERS EXCEPT WITH THE AUTHORIZED WRITTEN PERMISSION OF MTE CORPORATION			
CONTAINS <0.1% OF ANY SVHC BY WEIGHT PER REACH REGULATION				DESCRIPTION			
UNLESS OTHERWISE SPECIFIED DIMENSIONS ARE IN INCHES [MM] TOLERANCES ARE: ANGLES: ± 1 ° 1 PLACE .X: ± .1 [2.5] 2 PLACE .XX: ± .03 [0.76] 3 PLACE .XXX: ± .010 [0.254]		 N83 W13330 Leon Road Menomonee Falls, WI 53051 USA 800.455.4683 262.253.8200		DRAWN		DATE	
				SU		04/16/13	
				CHECKED		DATE	
				RH		04/09/14	
				APPROVED		DATE	
				RH		04/09/14	
				SIZE		DWG No.	
				D		CD MAPW0083E	
				SCALE		REV	
				1:4		02	
						SHEET 1 OF 1	