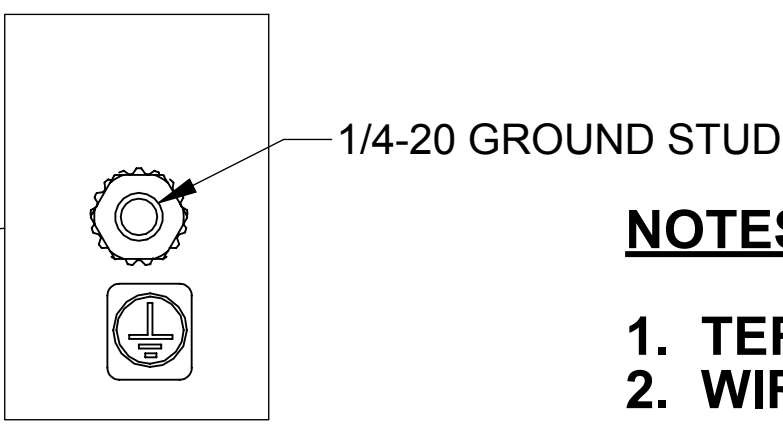
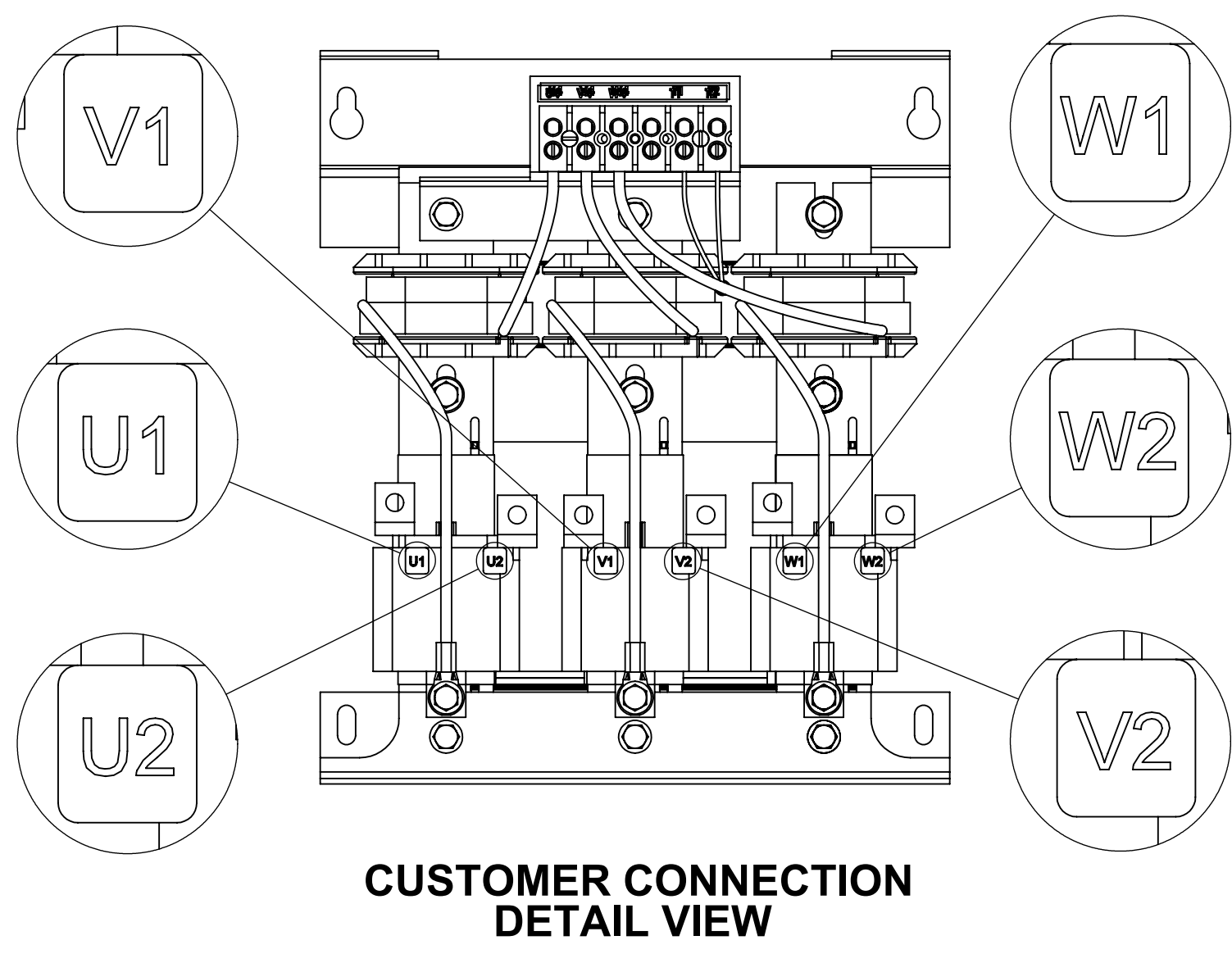
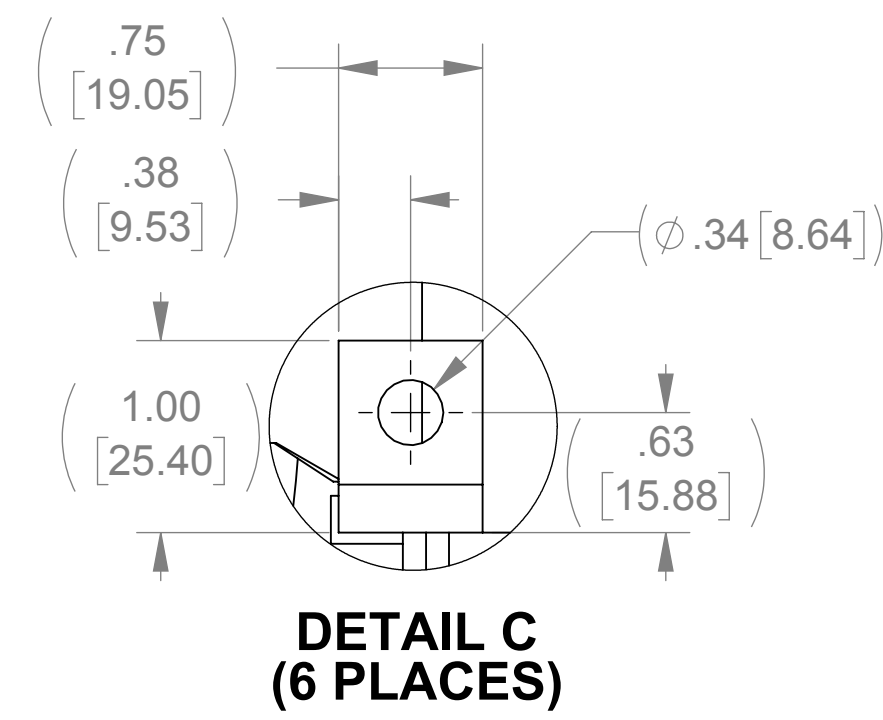
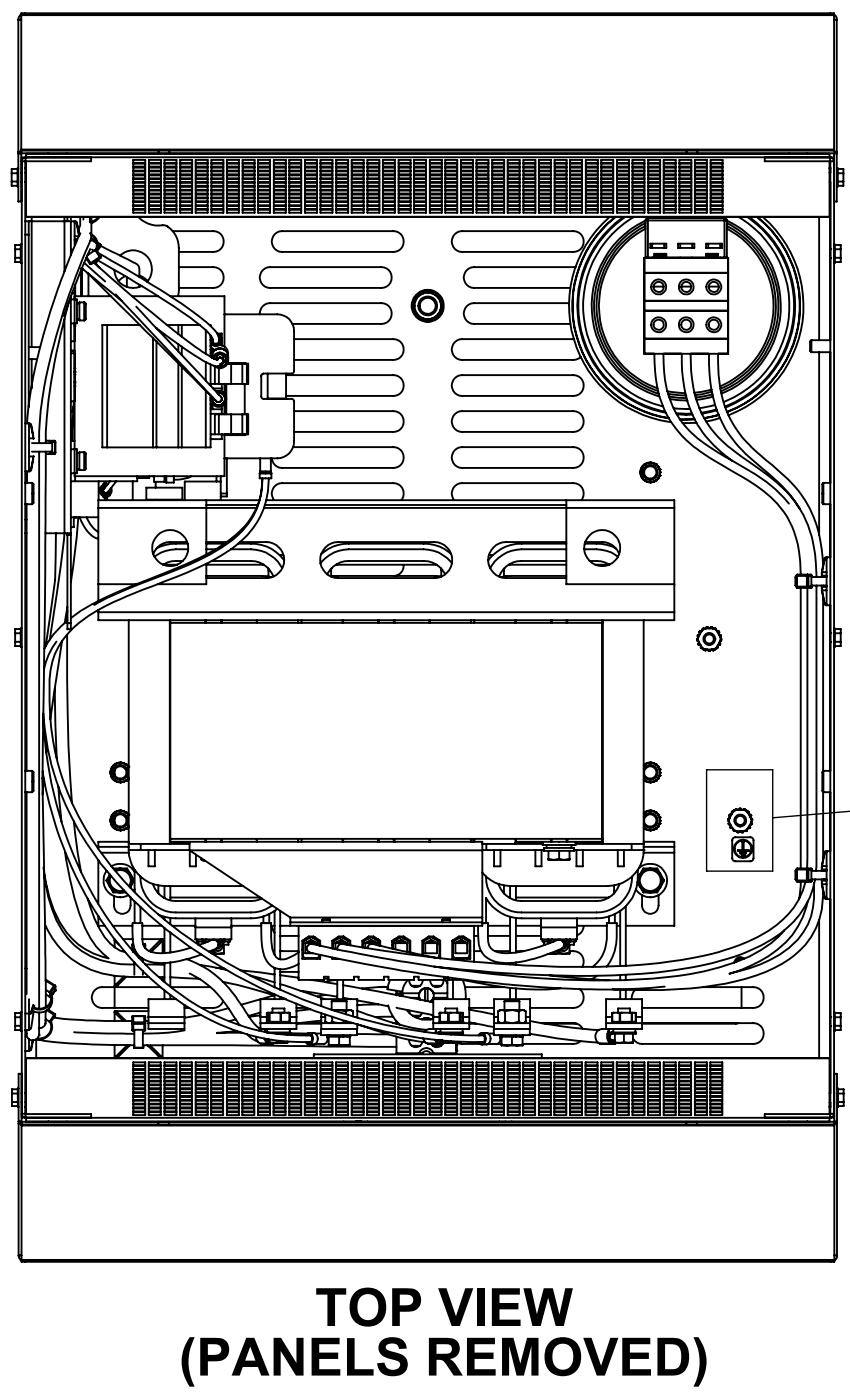
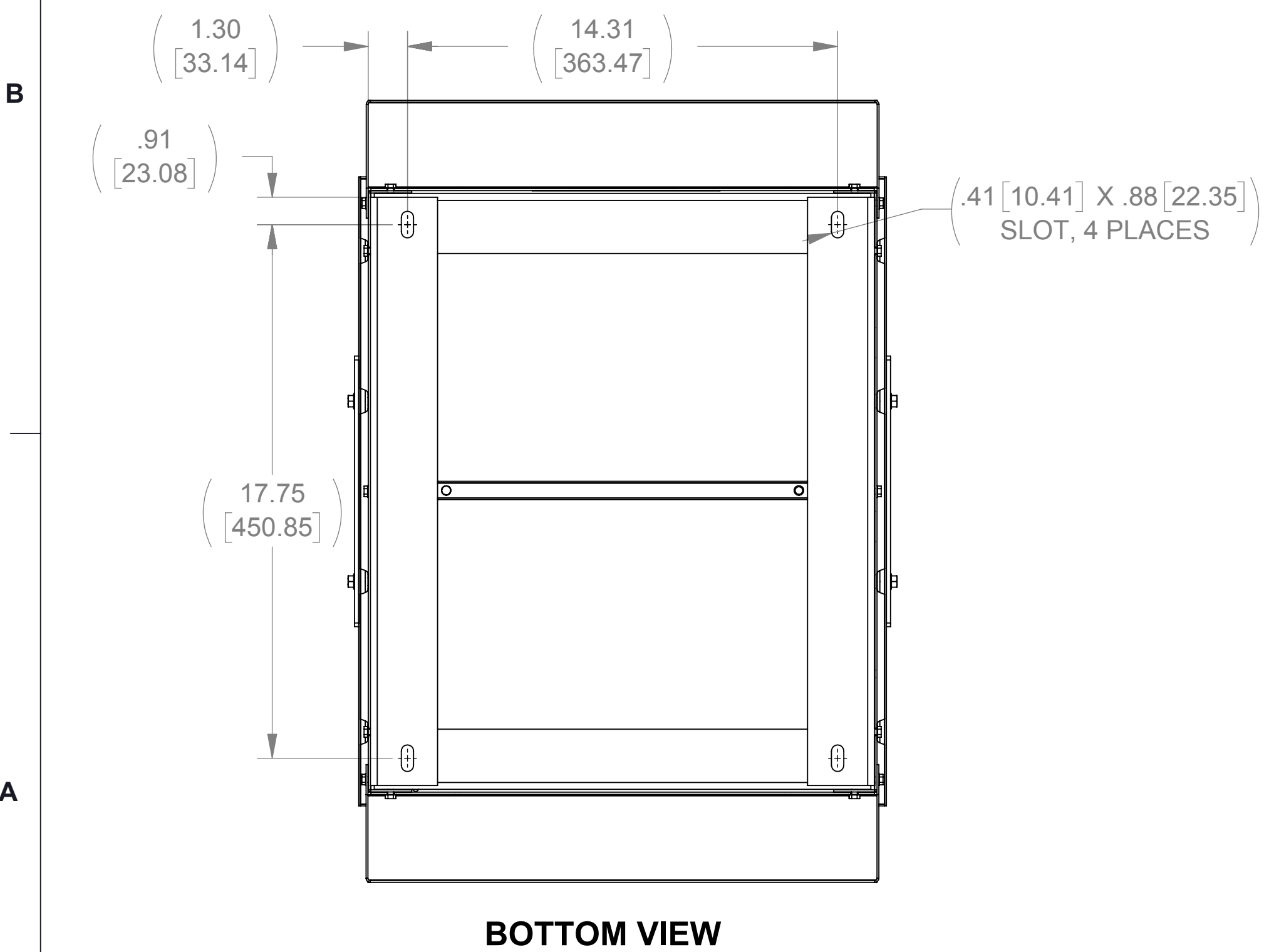
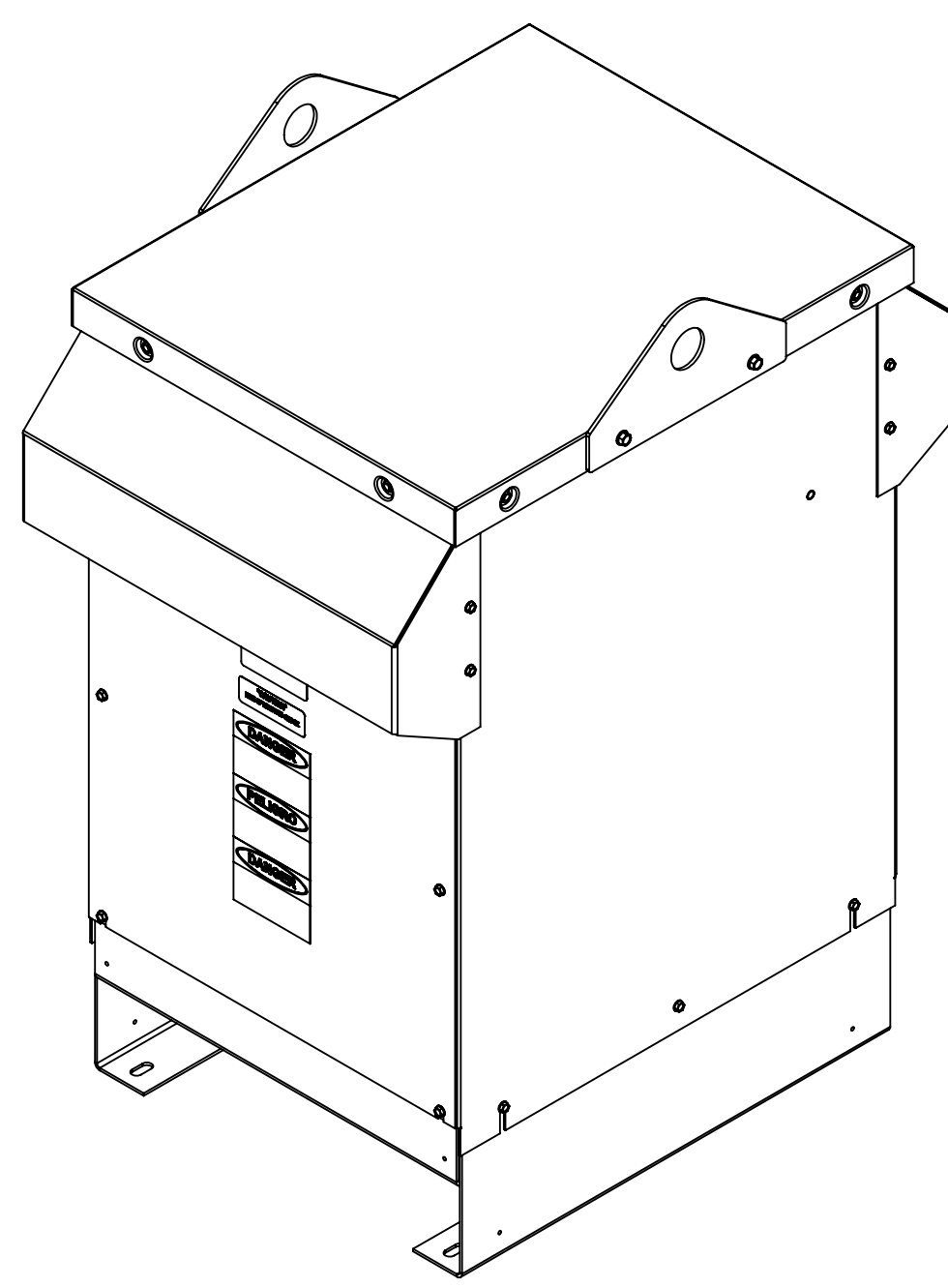
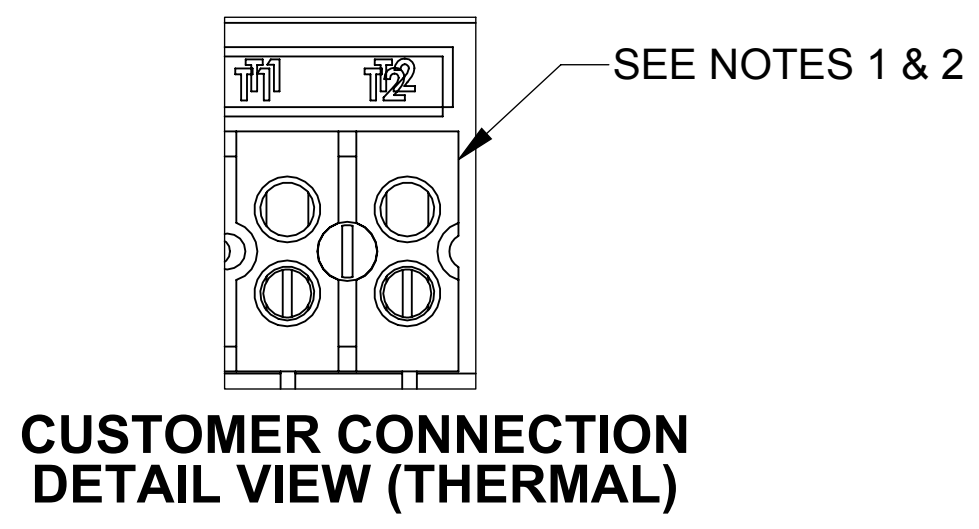
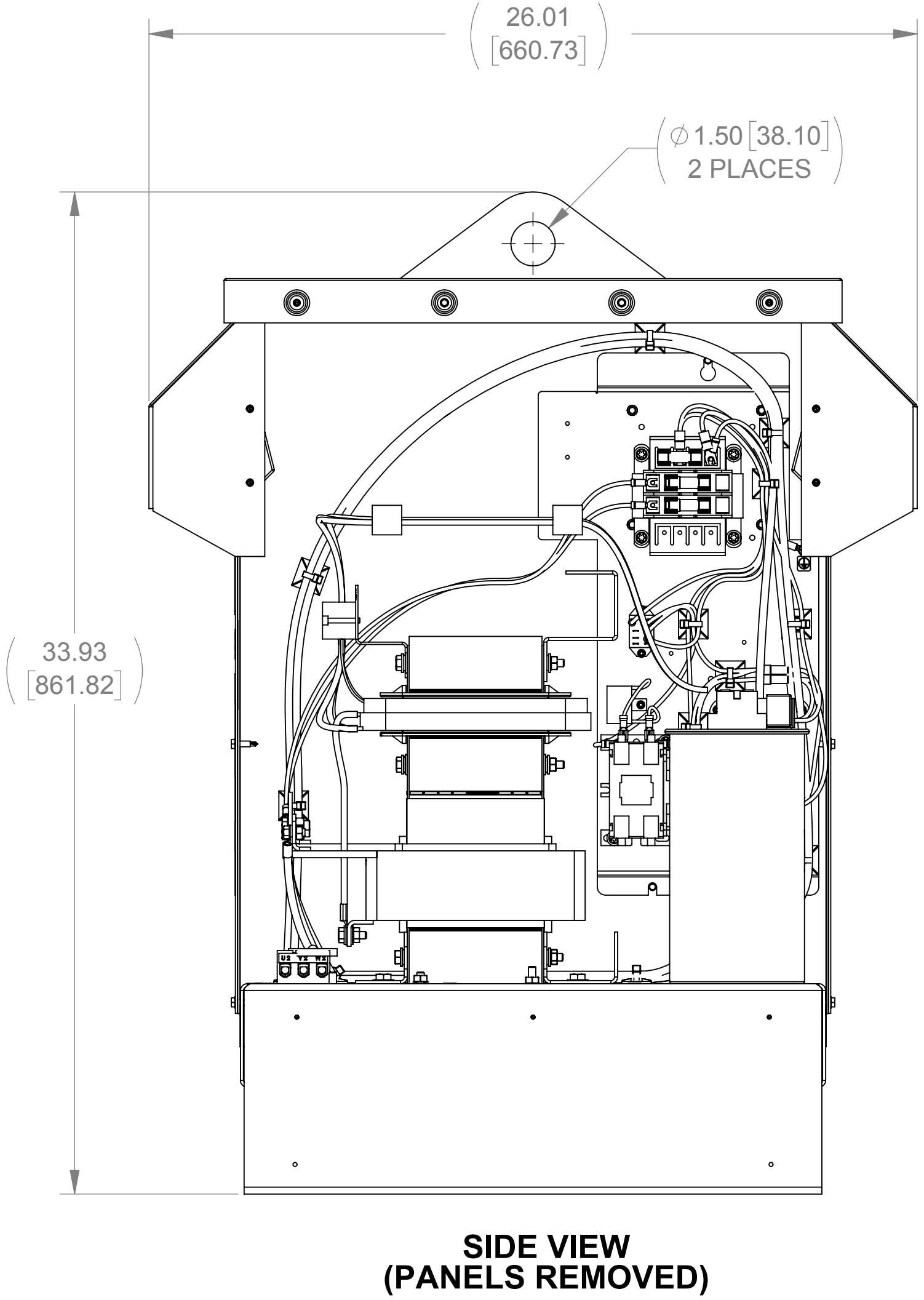
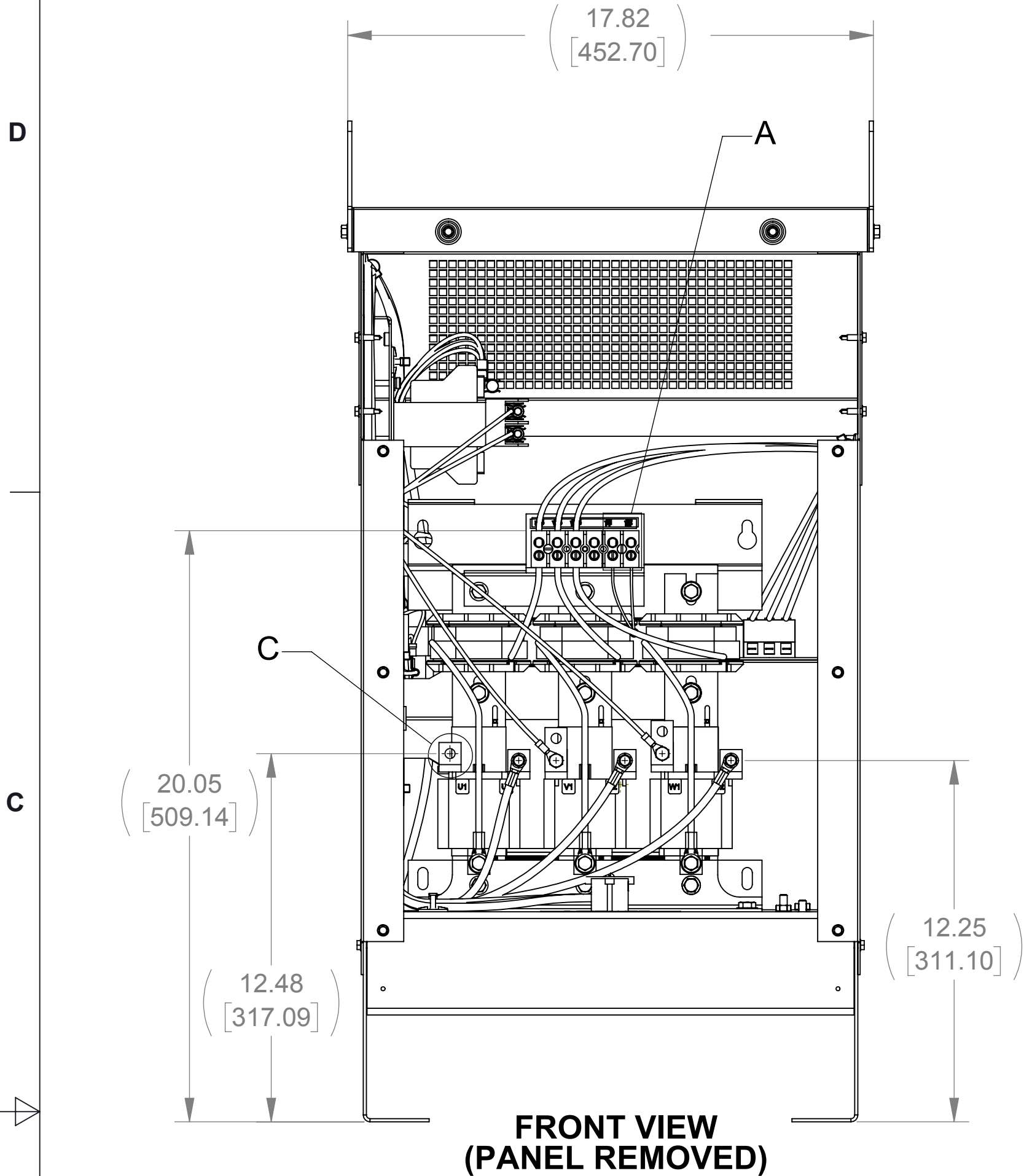



APPROX. WEIGHT (LBS)
267

ECO No	DESCRIPTION	REV BY	DATE
M9070	UPDATE TO CURRENT DRAWING STANDARDS	MN	04/03/14



- NOTES:**
1. TERMINAL SCREW TIGHTENING TORQUE: 16 IN/LBS, MAX.
  2. WIRE RANGE: 4-14 AWG.

THE COMPONENT, PART OR ASSEMBLY DESCRIBED IN THIS DOCUMENT MUST COMPLY WITH THE EU(EUROPEAN UNION) DIRECTIVE RoHS2		MATERIAL		CONFIDENTIAL AND PROPRIETARY INFORMATION THIS DOCUMENT CONTAINS CONFIDENTIAL AND PROPRIETARY INFORMATION OF MTE CORPORATION AND MAY NOT BE USED, COPIED OR DISCLOSED TO OTHERS EXCEPT WITH THE AUTHORIZED WRITTEN PERMISSION OF MTE CORPORATION			
CONTAINS <0.1% OF ANY SVHC BY WEIGHT PER REACH REGULATION				DESCRIPTION			
UNLESS OTHERWISE SPECIFIED DIMENSIONS ARE IN INCHES [MM] TOLERANCES ARE:  ANGLES: ± 1 °  1 PLACE .X: ± .1 [2.5]  2 PLACE .XX: ± .03 [0.76]  3 PLACE .XXX: ± .010 [0.254]		  N83 W13330 Leon Road Menomonee Falls, WI 53051 USA 800.455-4683 262.253.8200		MATRIX AP 66A 600V 60HZ FILTER, NEMA 3R ENCLOSURE			
		DRAWN SU	DATE 04/16/13	SIZE D	DWG No. CD MAPW0066E	REV 02	
		CHECKED RH	DATE 04/07/14	SCALE 1:4			
		APPROVED RH	DATE 04/07/14			SHEET 1 OF 1	