

APPROX. WEIGHT  
(LBS)  
76

ECO No	DESCRIPTION	REV BY	DATE
M9242	UPDATE LABEL CHANGE MADE AT ML LEVEL.	RT	08/05/14

D

C

B

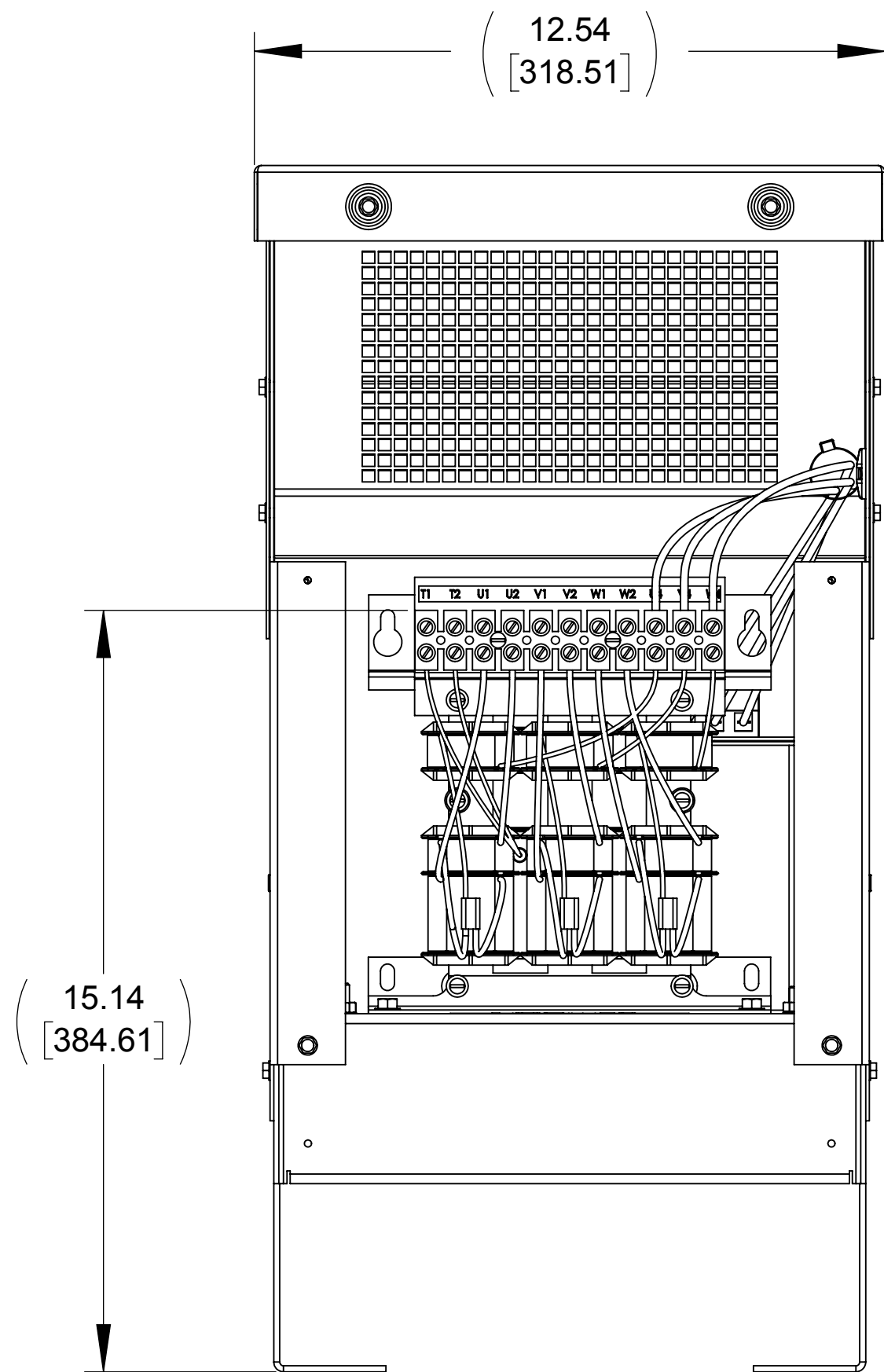
A

D

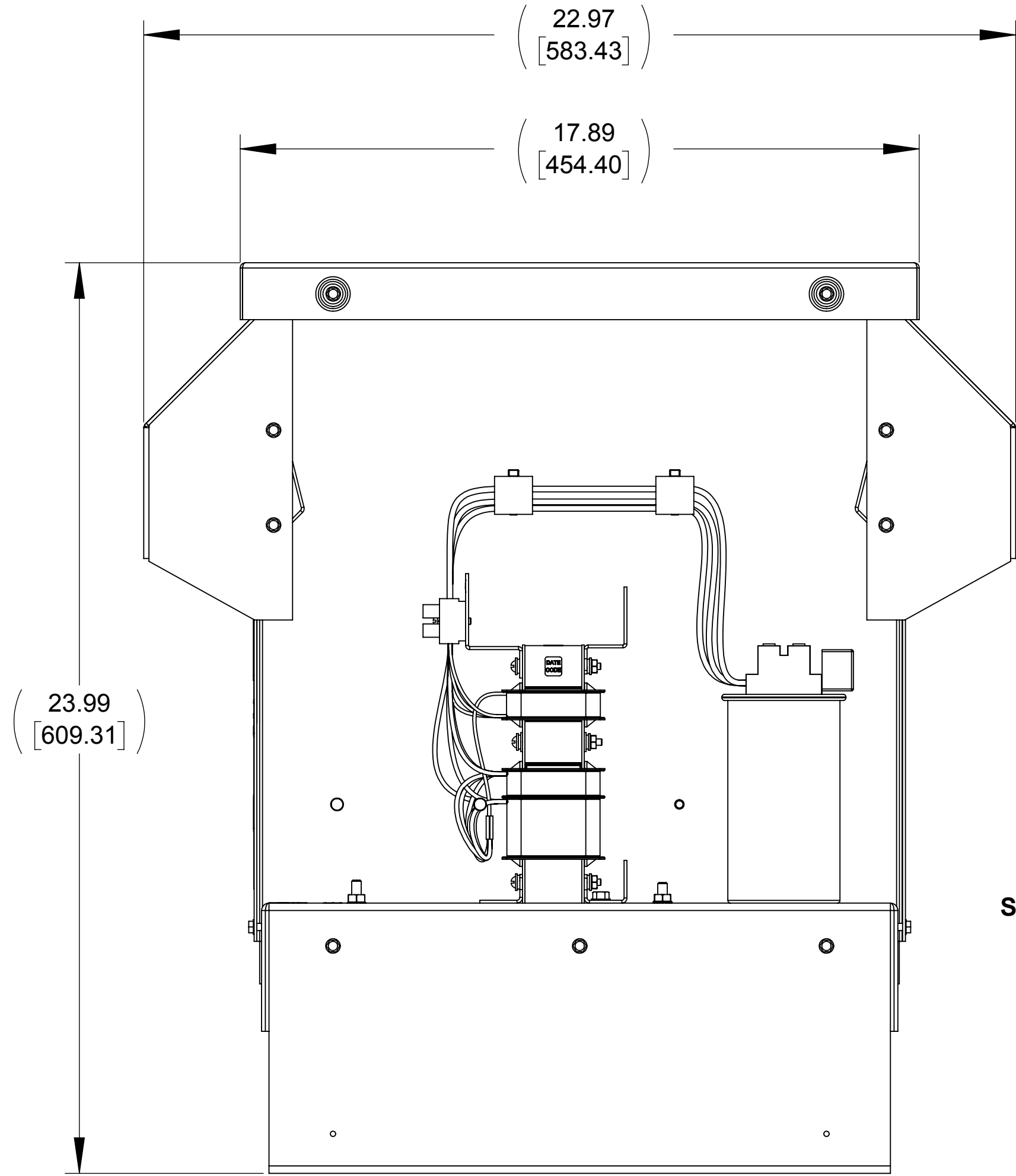
C

B

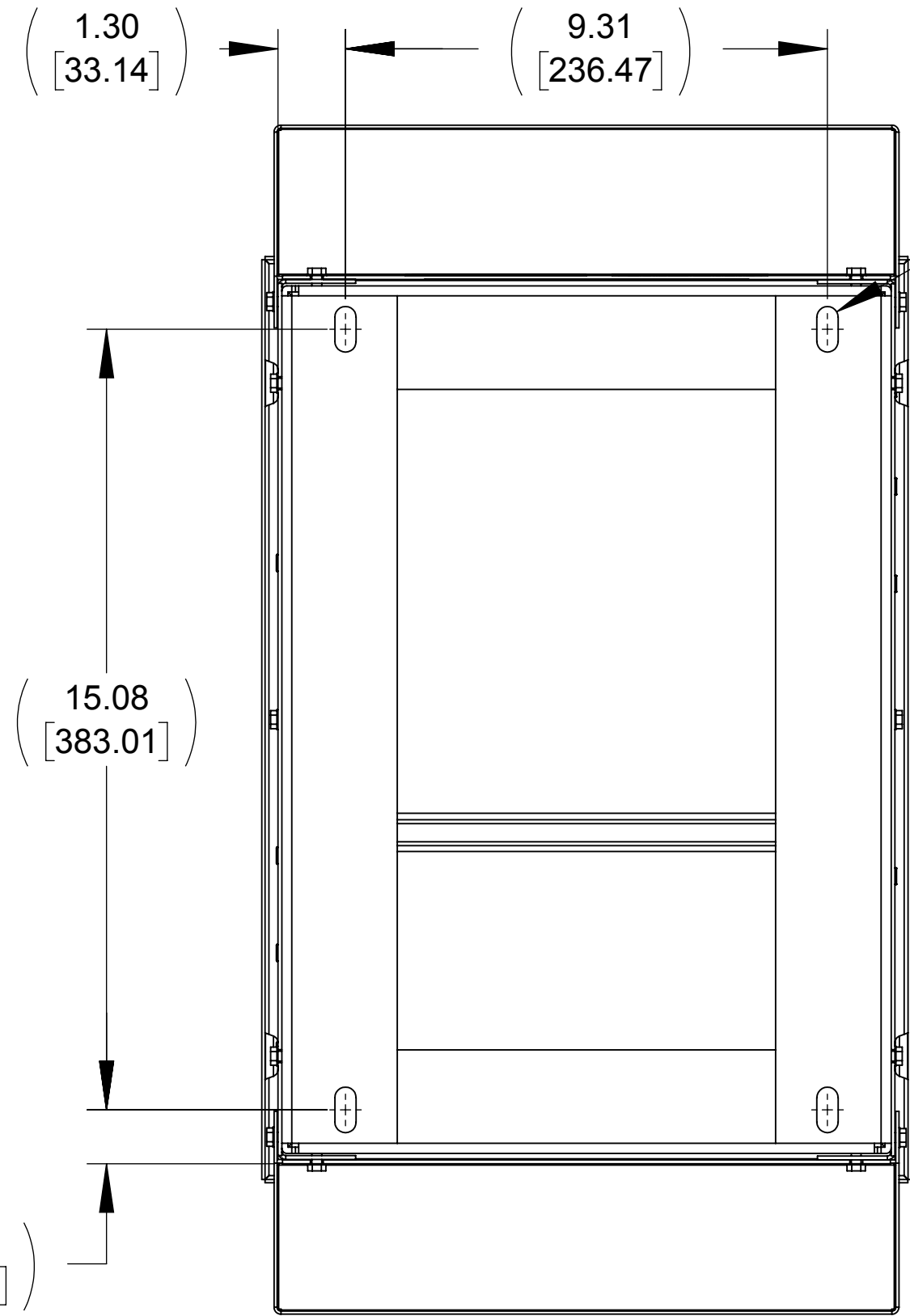
A



FRONT VIEW  
(PANELS REMOVED)



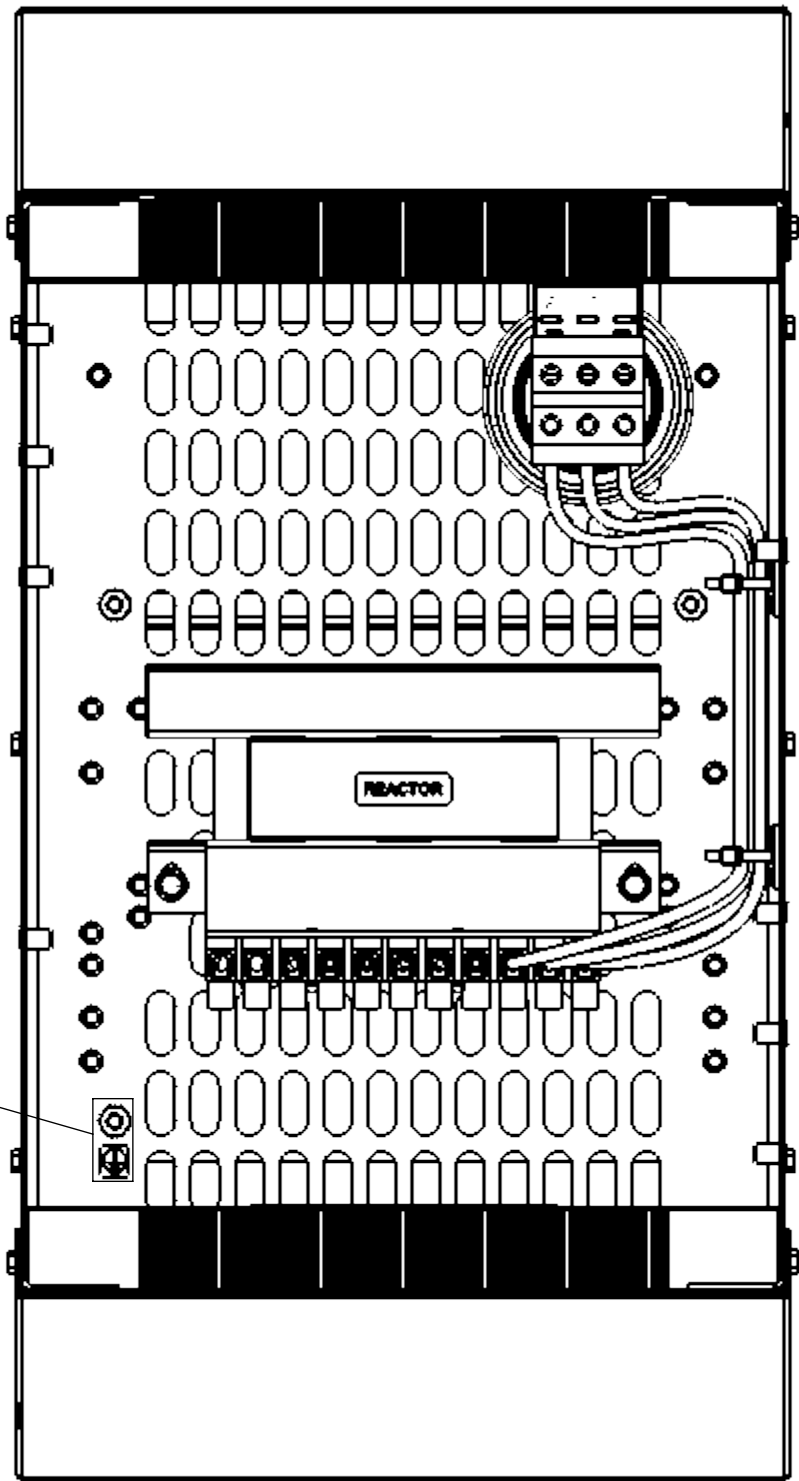
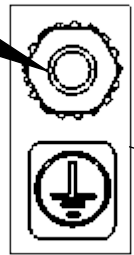
RIGHT SIDE VIEW  
(PANEL REMOVED)



BOTTOM VIEW

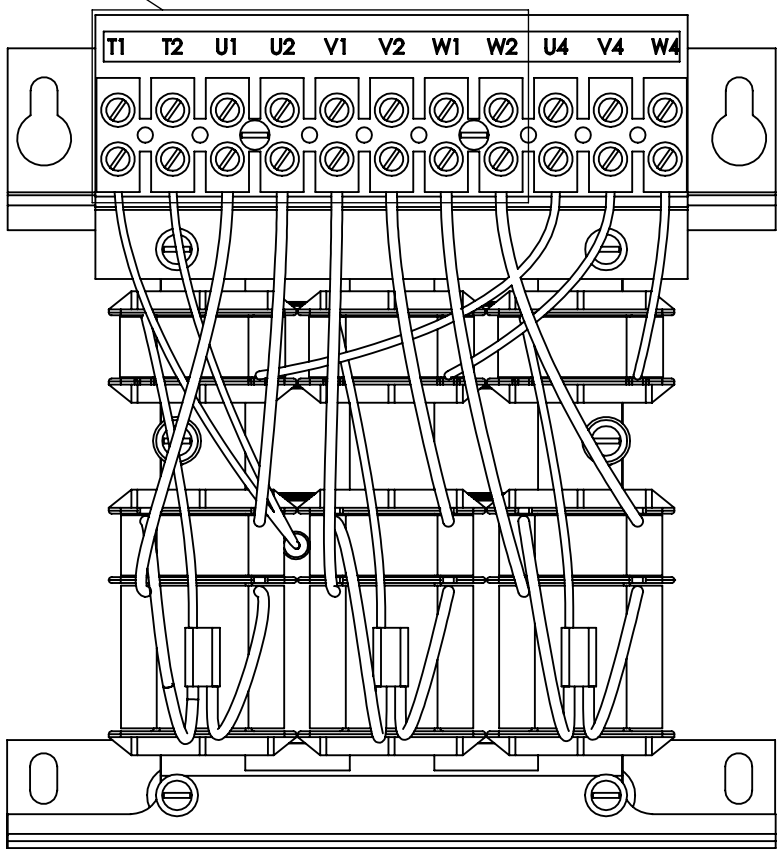
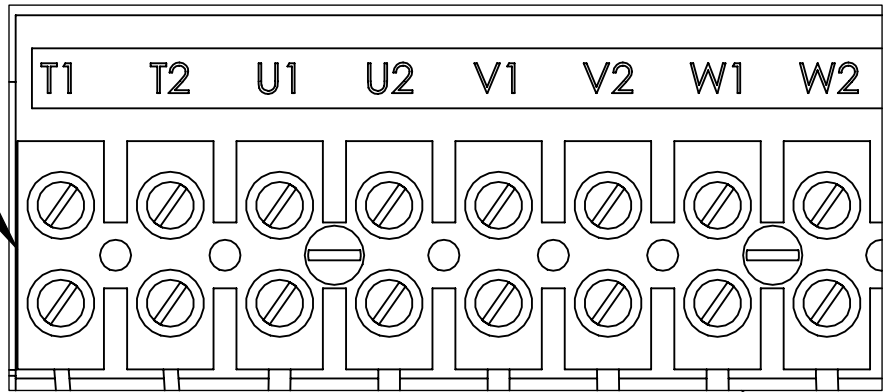
.41 [10.41] X .88 [22.23]  
SLOT, 4 PLACES

1/4-20 GROUND STUD

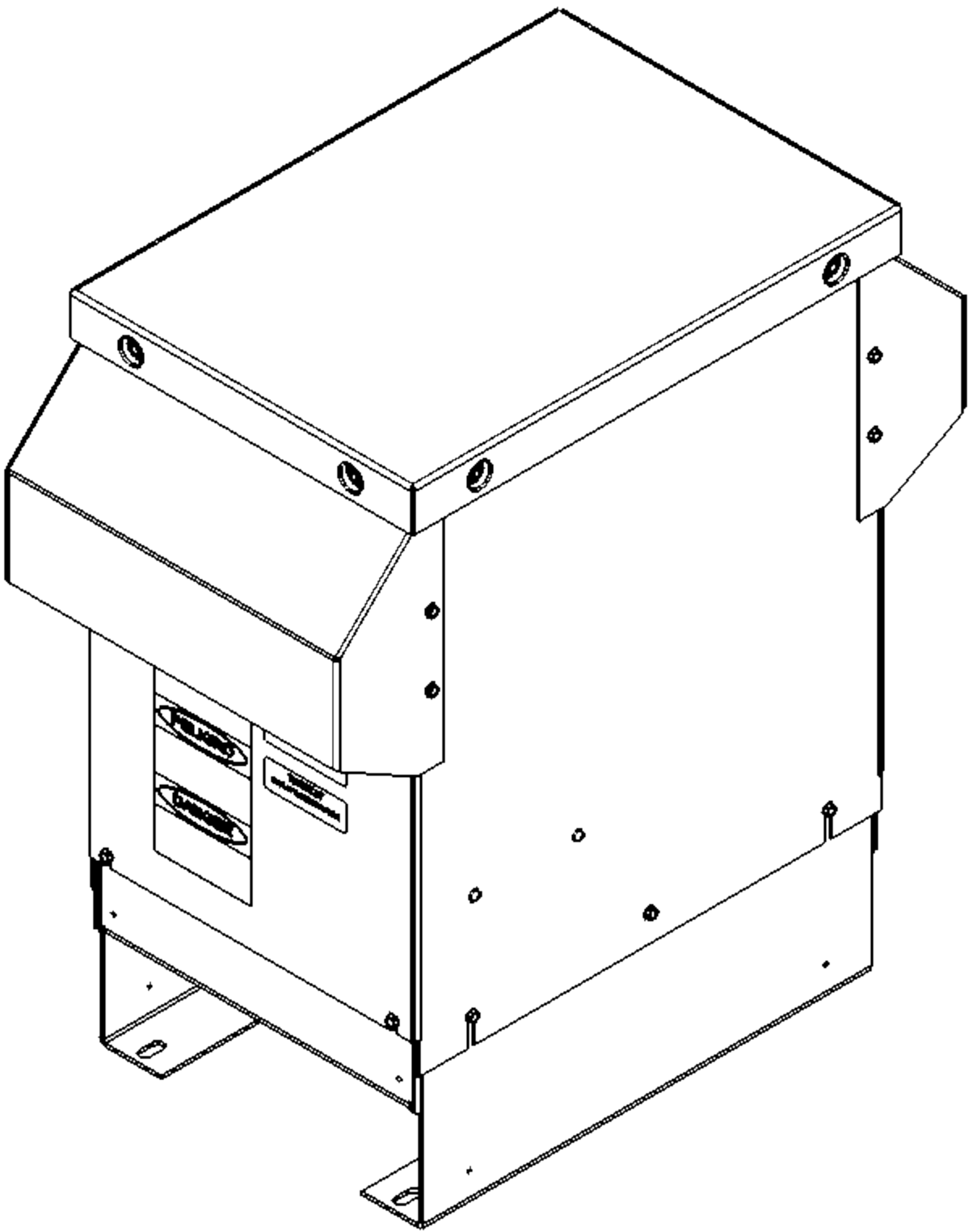


TOP VIEW  
(PANELS REMOVED)

SEE NOTES 1 & 2



CUSTOMER CONNECTION  
DETAIL VIEW AT REACTOR



NOTES:

1. TERMINAL SCREW TIGHTENING TORQUE: 16 IN/LBS, MAX.
2. WIRE RANGE: 4-14 AWG.

THE COMPONENT, PART OR ASSEMBLY DESCRIBED IN THIS DOCUMENT MUST COMPLY WITH THE EU(EUROPEAN UNION) DIRECTIVE RoHS2		MATERIAL		CONFIDENTIAL AND PROPRIETARY INFORMATION THIS DOCUMENT CONTAINS CONFIDENTIAL AND PROPRIETARY INFORMATION OF MTE CORPORATION AND MAY NOT BE USED, COPIED OR DISCLOSED TO OTHERS EXCEPT WITH THE AUTHORIZED WRITTEN PERMISSION OF MTE CORPORATION	
CONTAINS <0.1% OF ANY SVHC BY WEIGHT PER REACH REGULATION				DESCRIPTION	
UNLESS OTHERWISE SPECIFIED DIMENSIONS ARE IN INCHES [MM] TOLERANCES ARE: ANGLES: ± 1 ° 1 PLACE .X: ± .1 [2.5] 2 PLACE .XX: ± .03 [0.76] 3 PLACE .XXX: ± .010 [0.254]		<b>MTE</b> AN BL POWER ELECTRONICS COMPANY N83 W13330 Leon Road Menomonee Falls, WI 53051 USA 800.455.4683 262.253.8200		MATRIX AP 8A 480V 60HZ FILTER, NEMA 3R ENCLOSURE	
		DRAWN JP	DATE 05/01/12	SIZE D	DWG No. CD MAPW0008D
		CHECKED RH	DATE 08/06/14	REV 02	
		APPROVED RH	DATE 08/06/14	SCALE 1:3	SHEET 1 OF 1