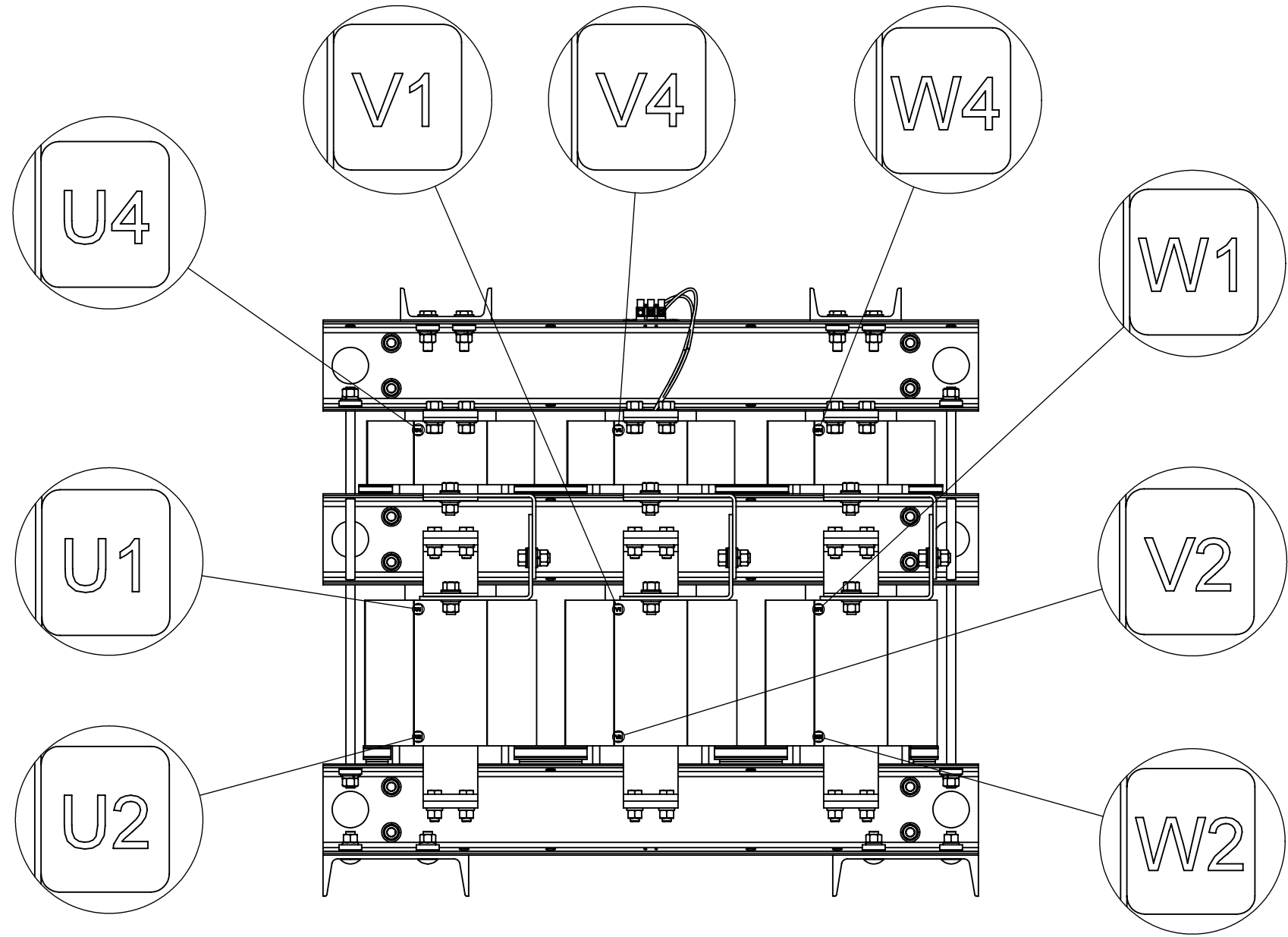
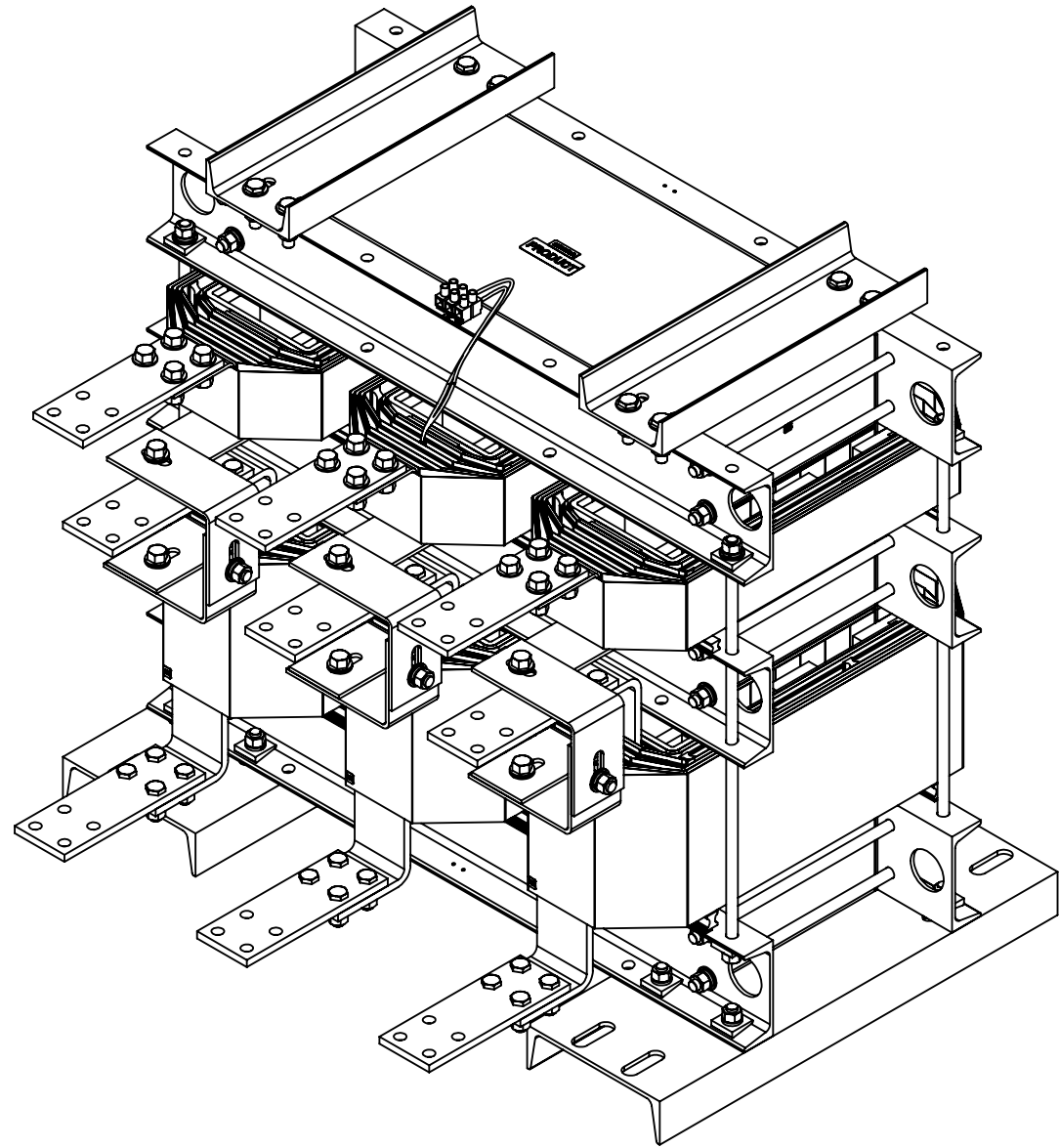
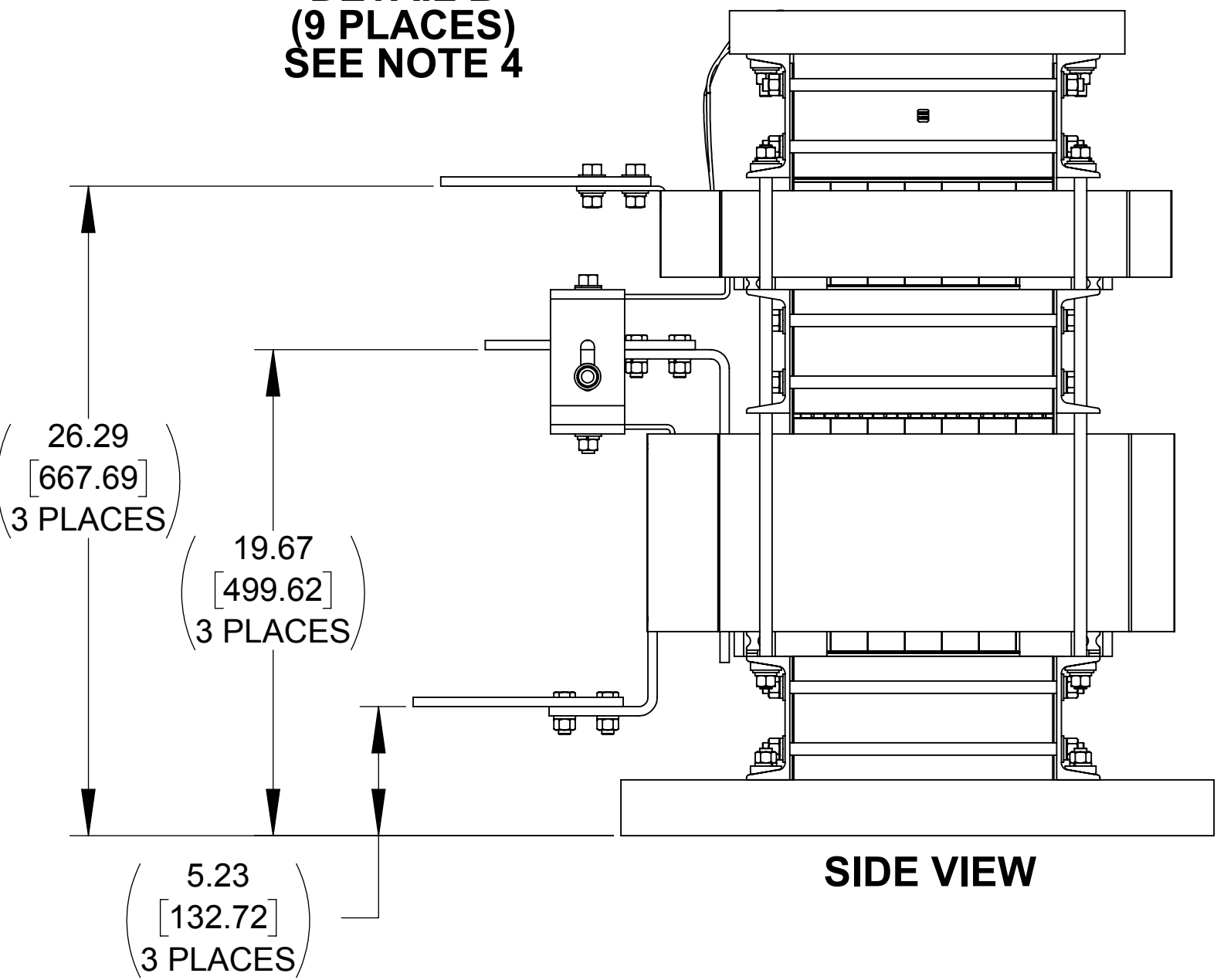
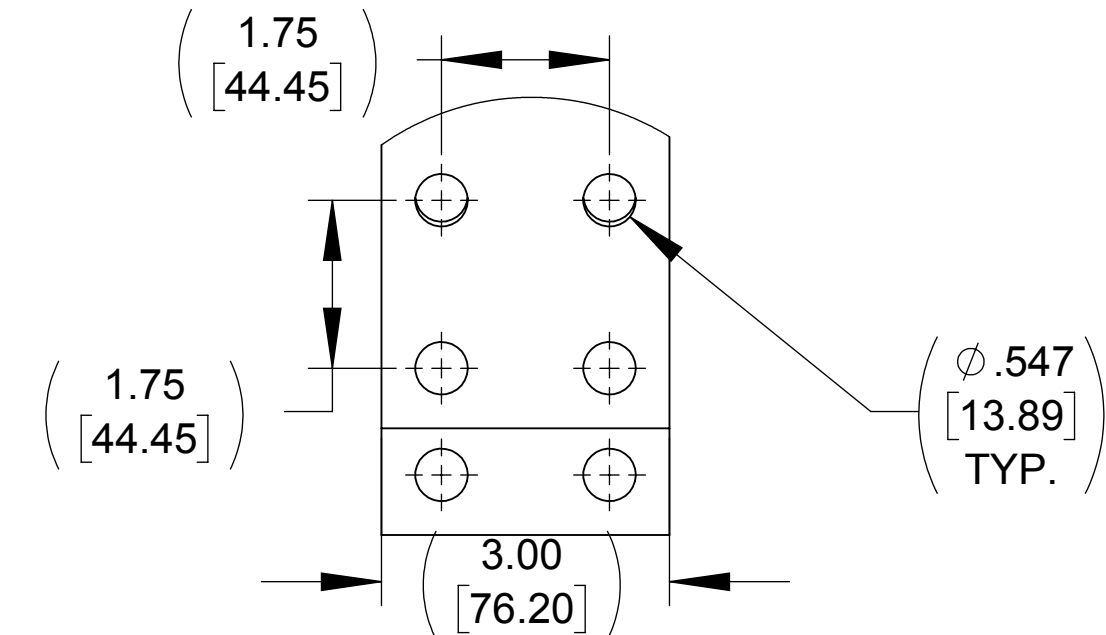
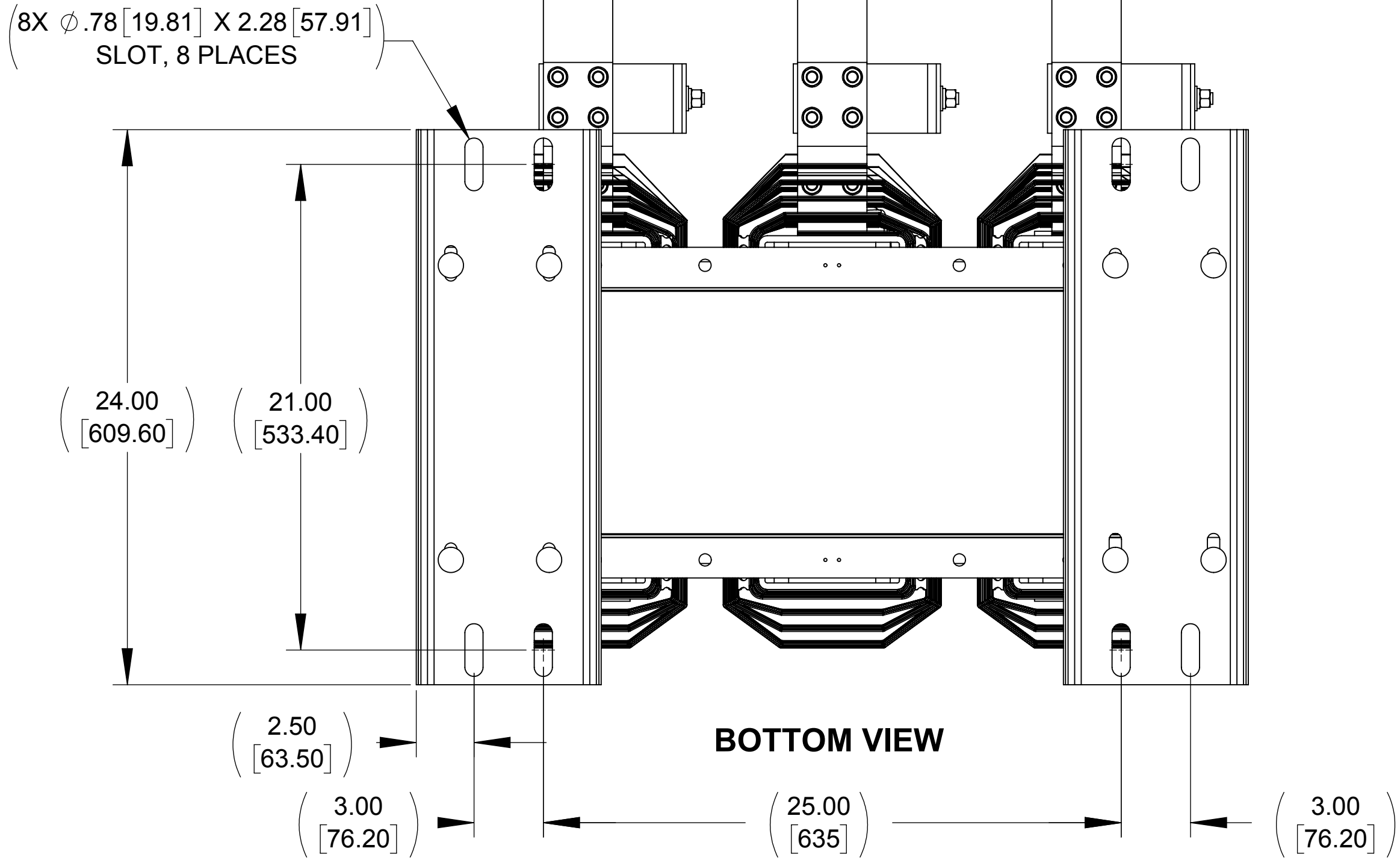
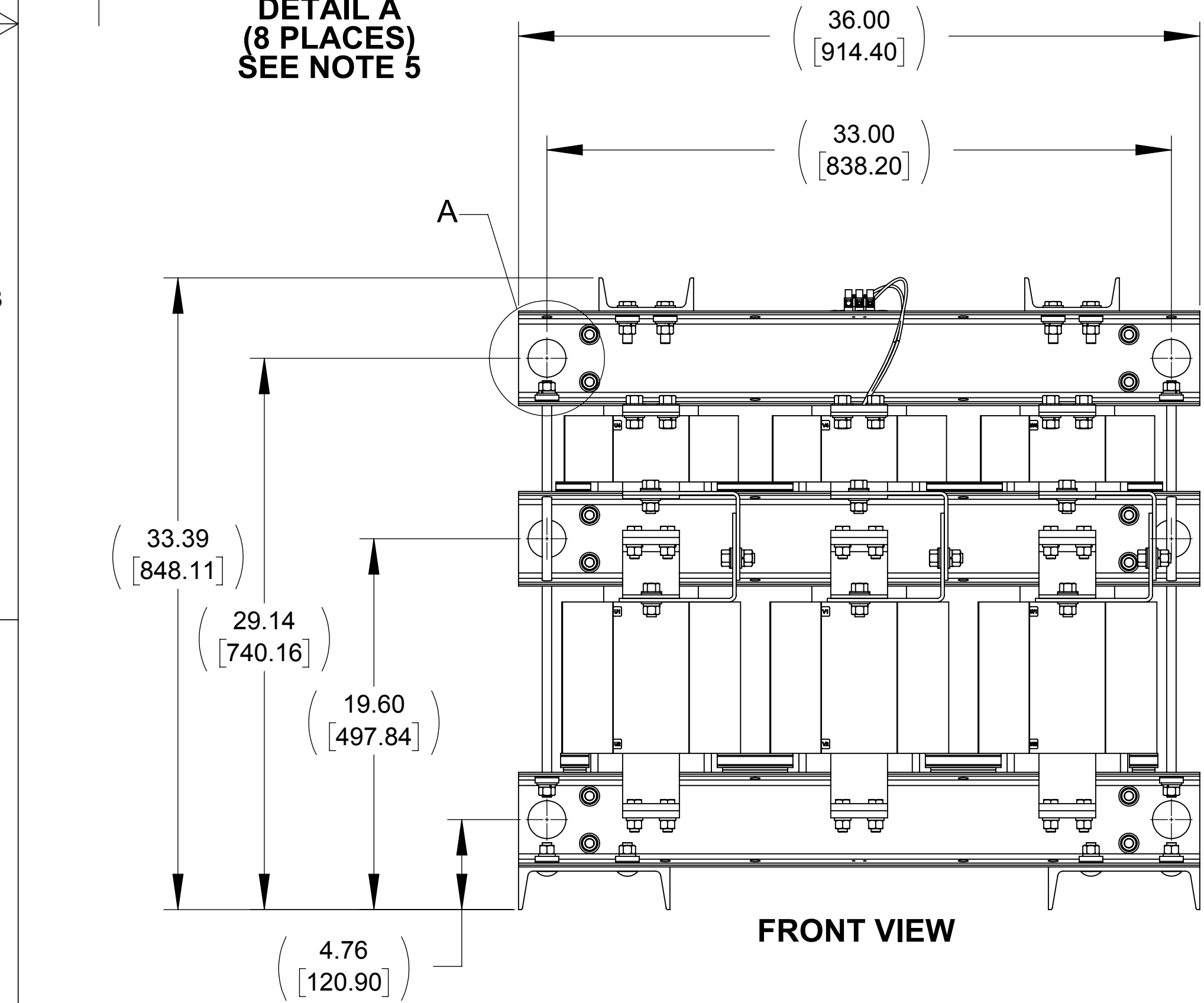
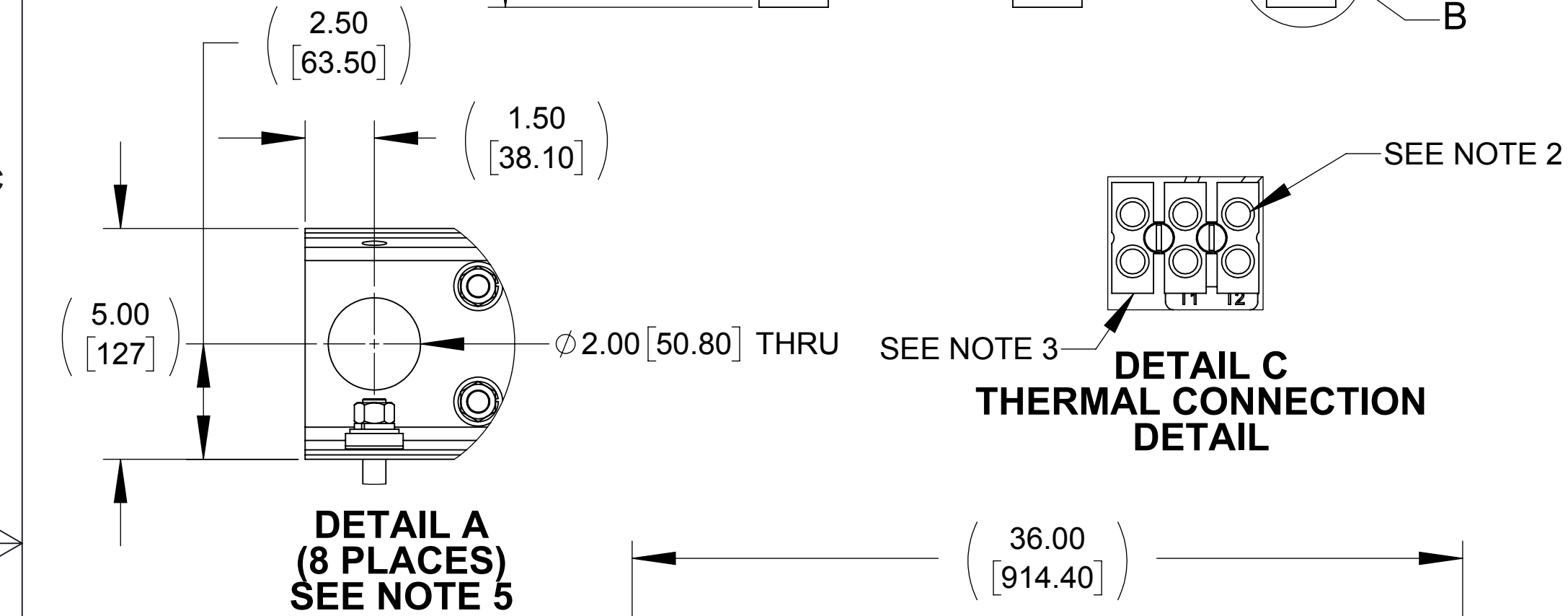
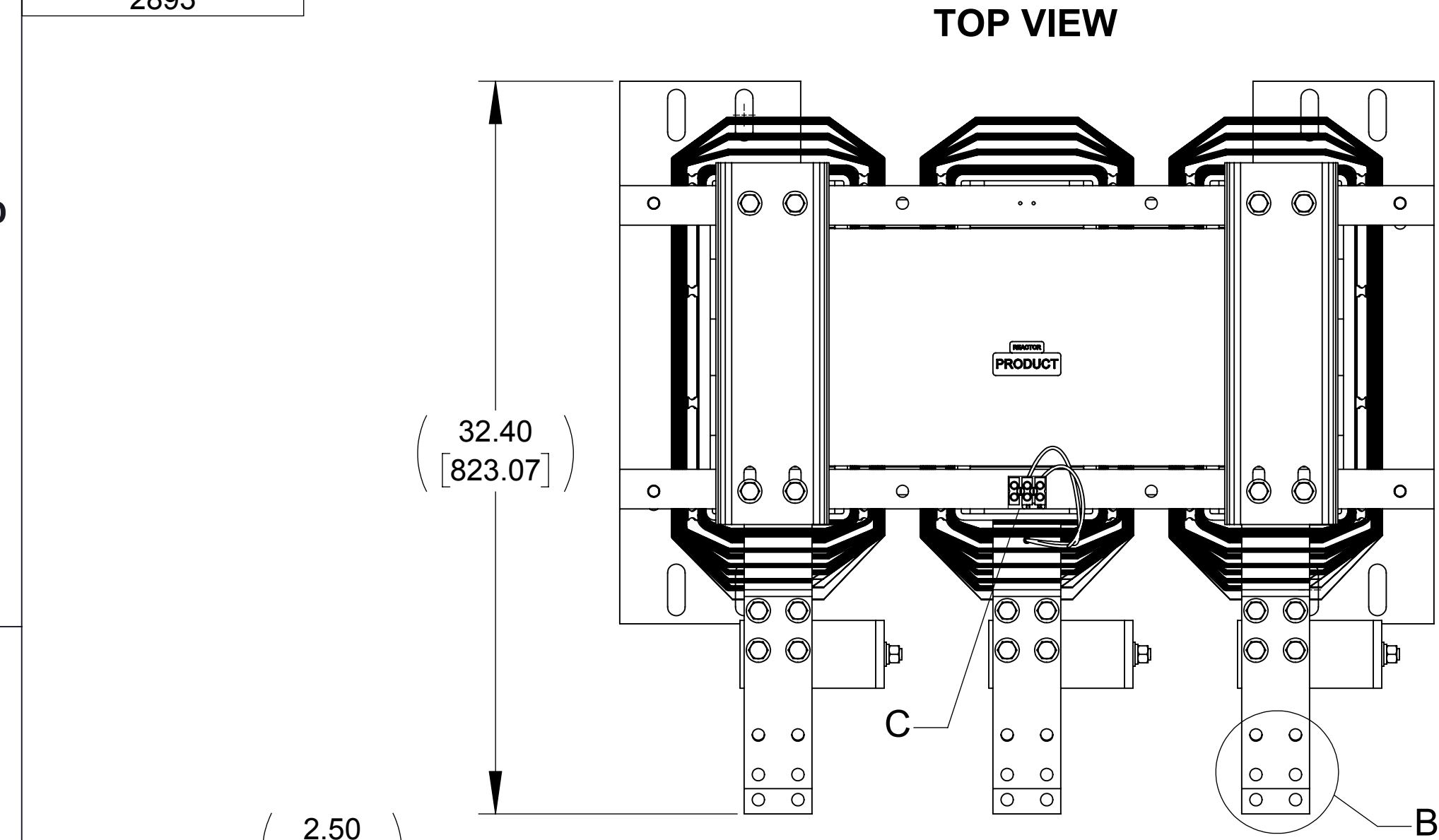


| APPROX. WEIGHT (LBS.) |
|--------------------------|
| 2893 |

| ECO No | DESCRIPTION | REV BY | DATE |
|--------|--|--------|----------|
| M9921 | REPLACED CAPPANEL-562 WITH CAPPANEL-562C | SL | 01/04/17 |



NOTES:

1. FILTER REQUIRES CAPPANEL-562C (QTY. 6).
2. TERMINAL SCREW TIGHTENING TORQUE: 16 IN/LBS. MAX.
3. TERMINAL BLOCK WIRE RANGE: 4-14 AWG.
4. RECOMMENDED TERMINATION VIA BUS BAR.
5. RECOMMENDED LIFTING: USE TOP HOLES.

| | | | | | |
|--|--|---|--|--|-------------------------|
| THE COMPONENT, PART OR ASSEMBLY DESCRIBED IN THIS DOCUMENT MUST COMPLY WITH THE EU(EUROPEAN UNION) DIRECTIVE RoHS2 | | MATERIAL | | CONFIDENTIAL AND PROPRIETARY INFORMATION THIS DOCUMENT CONTAINS CONFIDENTIAL AND PROPRIETARY INFORMATION OF MTE CORPORATION AND MAY NOT BE USED, COPIED OR DISCLOSED TO OTHERS EXCEPT WITH THE AUTHORIZED WRITTEN PERMISSION OF MTE CORPORATION | |
| CONTAINS <0.1% OF ANY SVHC BY WEIGHT PER REACH REGULATION | | | | DESCRIPTION | |
| UNLESS OTHERWISE SPECIFIED DIMENSIONS ARE IN INCHES [MM] TOLERANCES ARE: ANGLES: ± 1 ° 1 PLACE .X: ± .1 [2.5] 2 PLACE .XX: ± .03 [0.76] 3 PLACE .XXX: ± .010 [0.254] | | MTE POWER QUALITY. SOLVED. N83 W13330 Leon Road Menomonee Falls, WI 53051 USA 800.455-4683 262.253-8200 | | MATRIX AP FILTER 2300A 480V OPEN PANEL | |
| DRAWN RT | | DATE 04/23/14 | | SIZE D | DWG No. CD MAPP2300D |
| CHECKED JM | | DATE 02/08/17 | | REV 04 | |
| APPROVED JM | | DATE 02/08/17 | | SCALE 1:8 | SHEET 1 OF 1 |