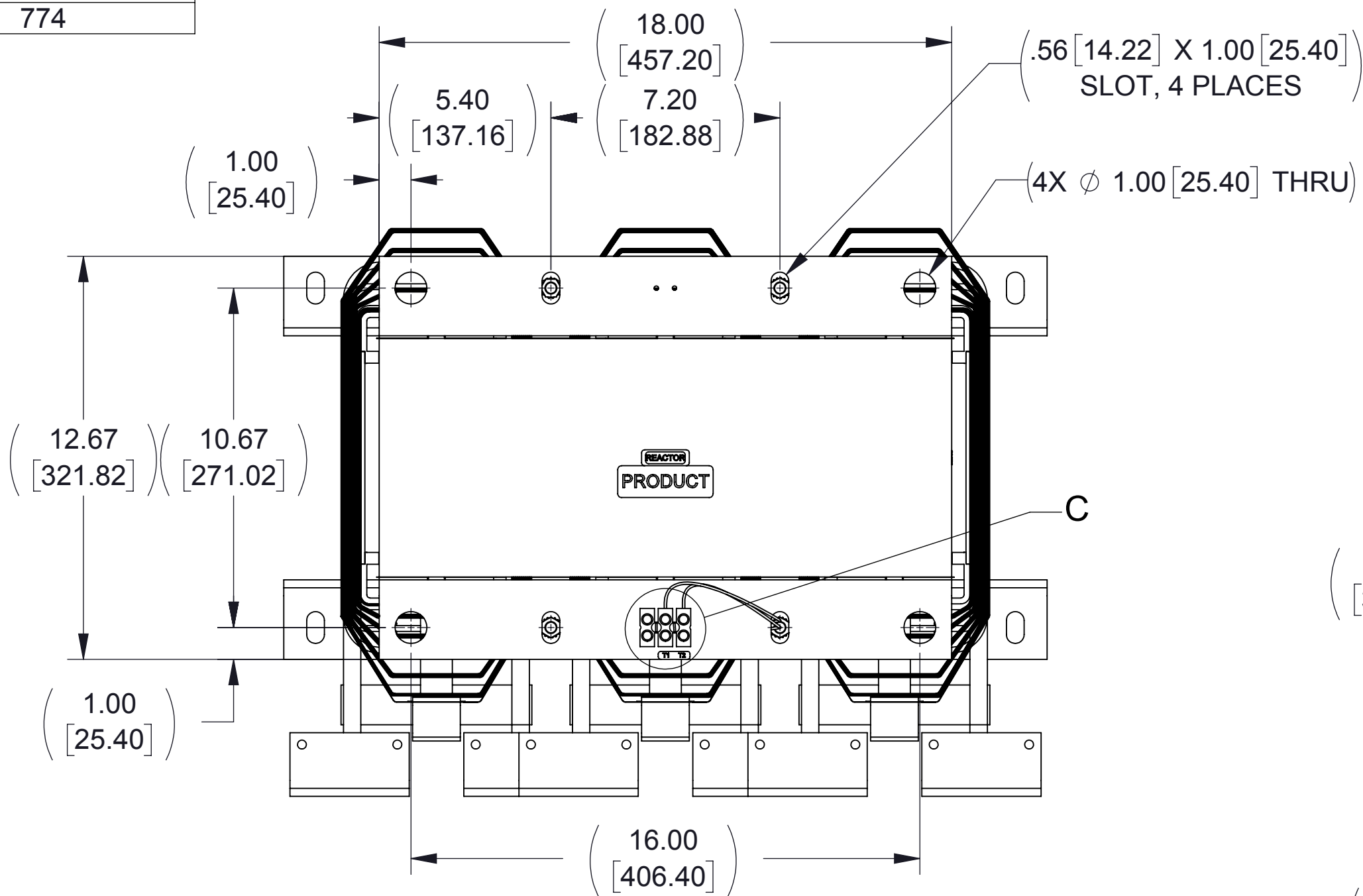
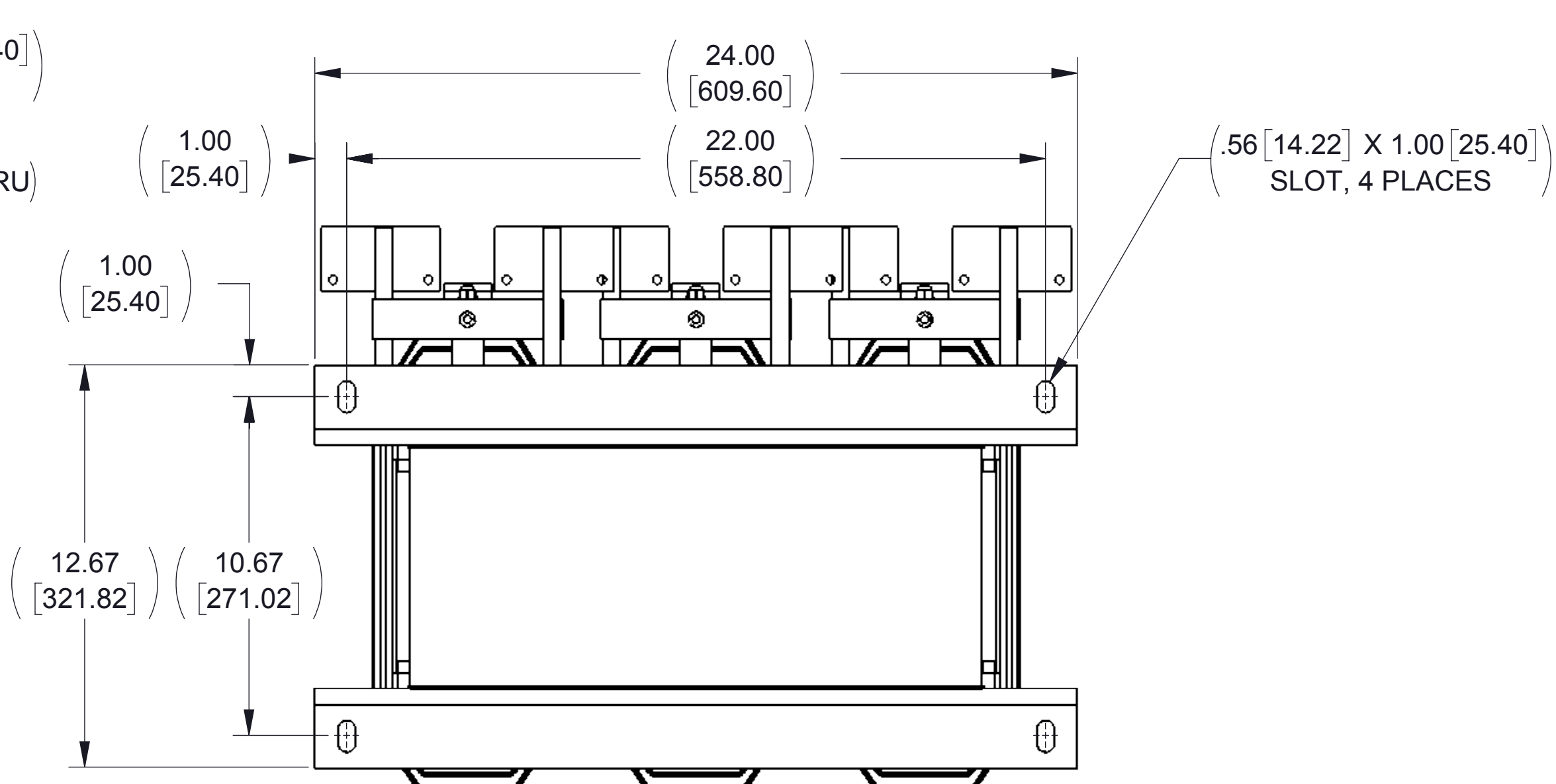


APPROX. WEIGHT
(LBS)
774

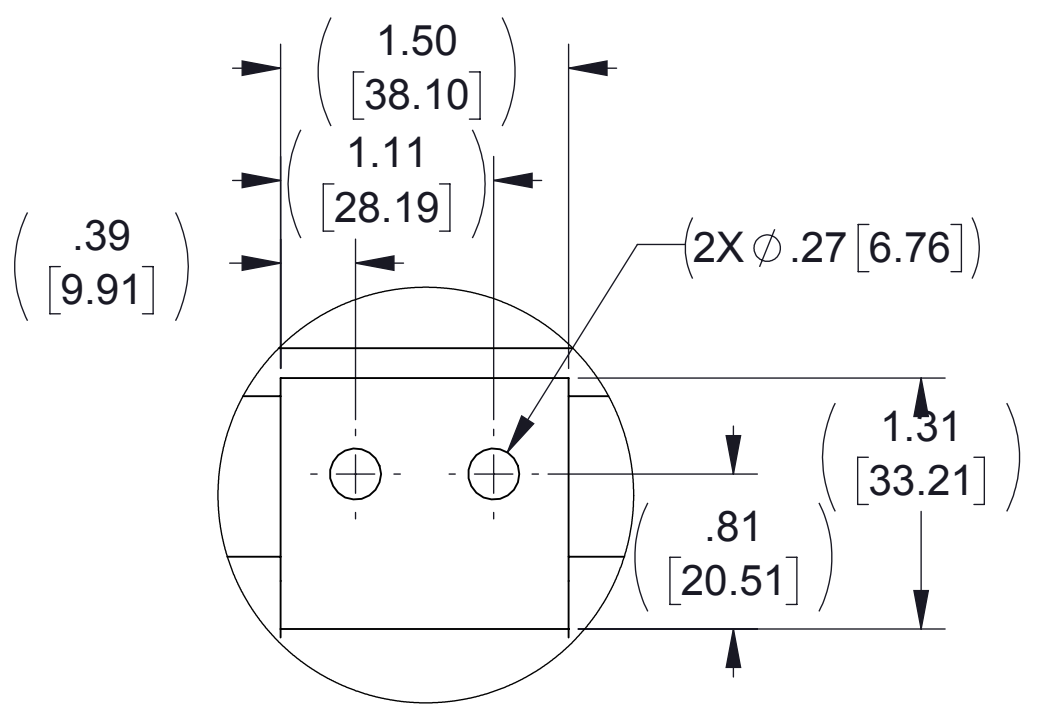
ECO No	DESCRIPTION	REV BY	DATE
M9921	REPLACED CAPPANEL-562 WITH CAPPANEL-562C	SL	01/04/17



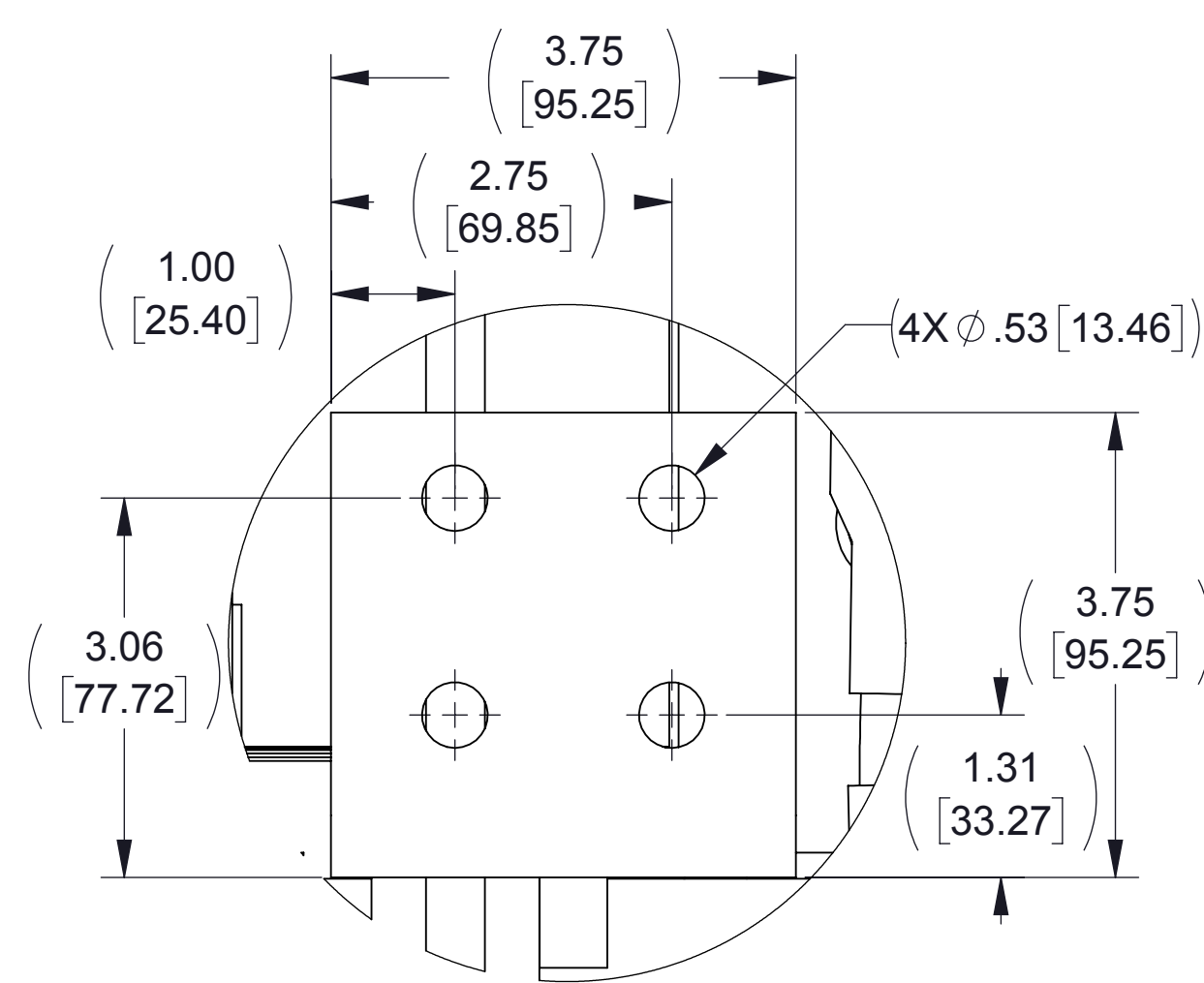
TOP VIEW



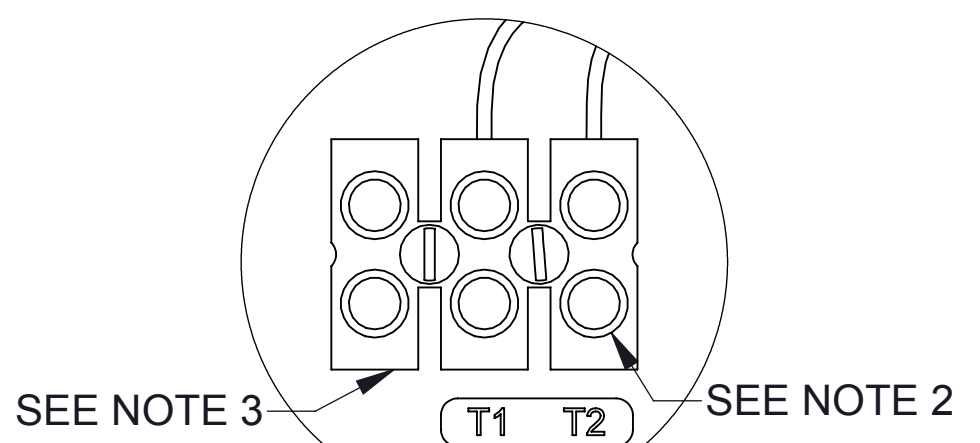
BOTTOM VIEW



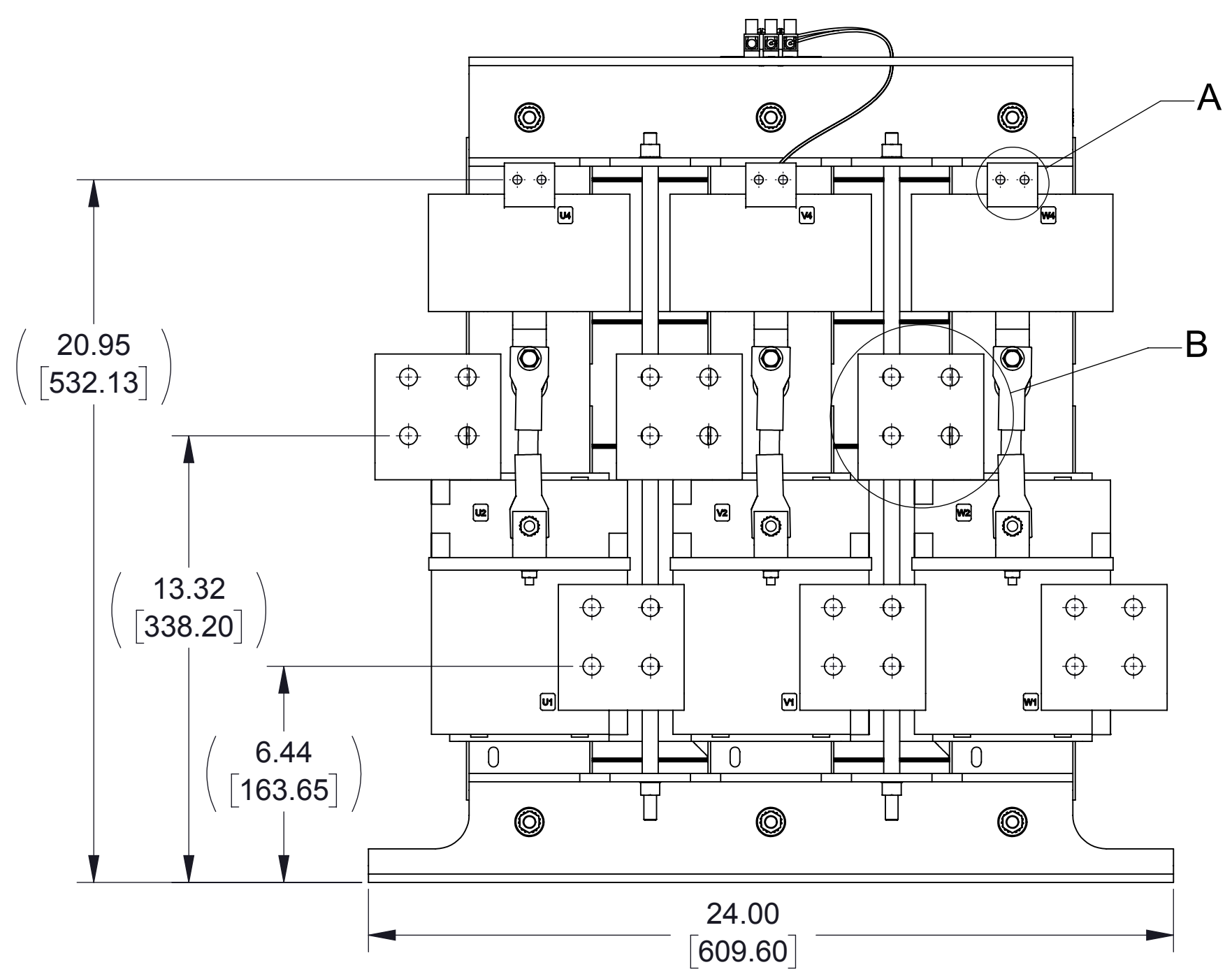
DETAIL A
(3 PLACES)



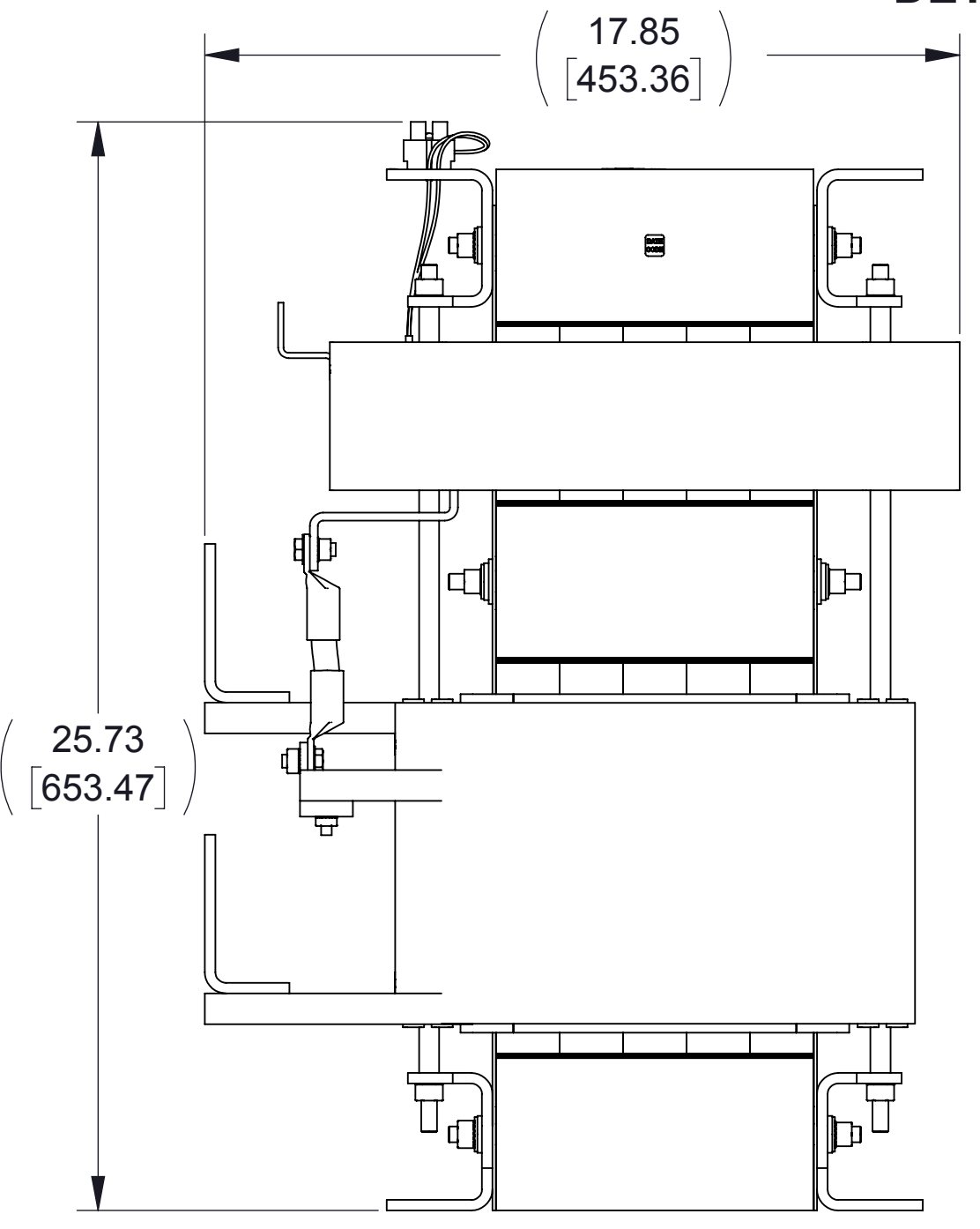
DETAIL B
(6 PLACES)



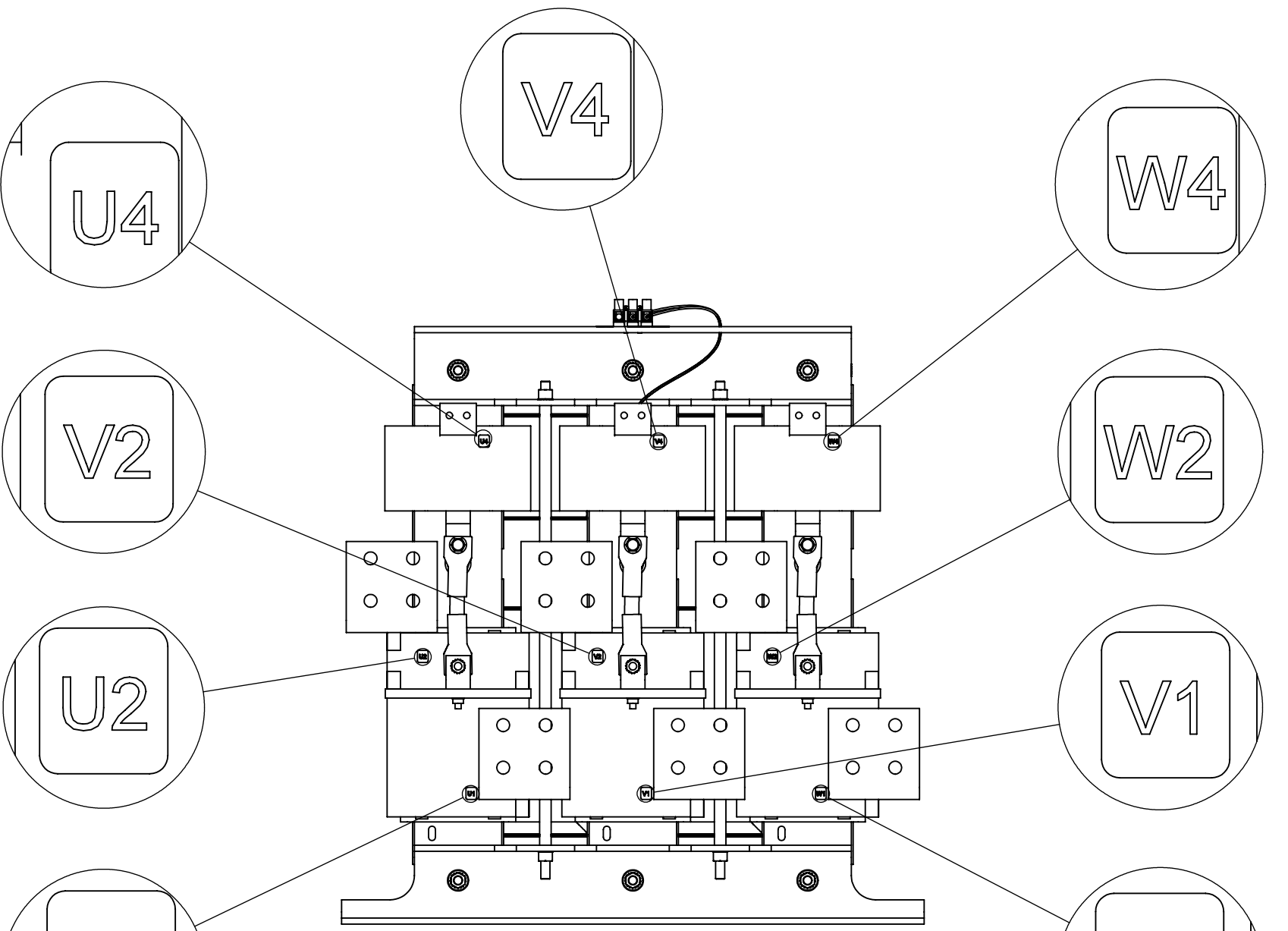
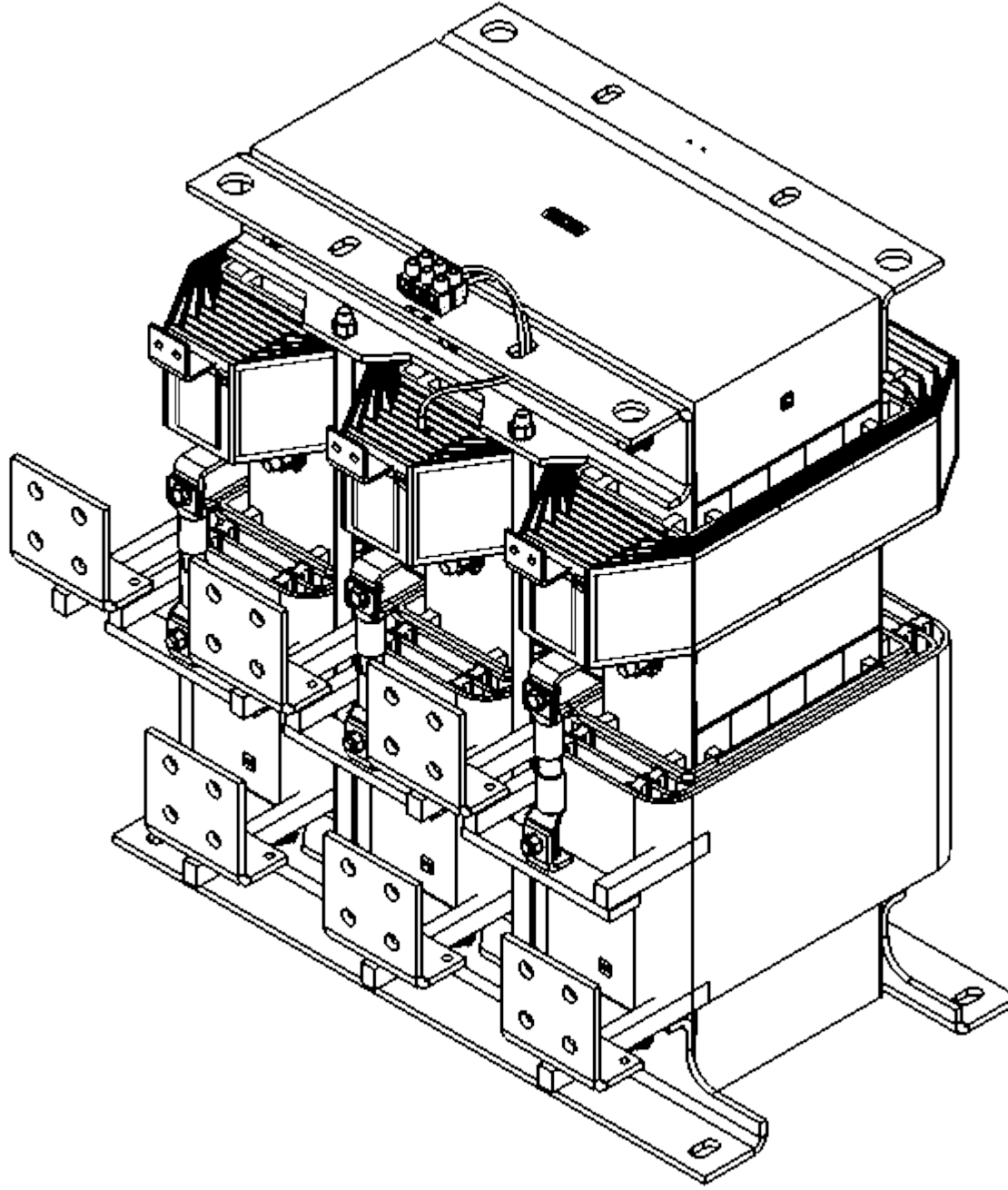
DETAIL C
CUSTOMER CONNECTION
DETAIL VIEW (THERMAL)



FRONT VIEW



RIGHT SIDE VIEW



CUSTOMER CONNECTION
DETAIL VIEW

NOTES:

1. FILTER REQUIRES CAPPANEL-562 (QTY 2).
2. TERMINAL SCREW TIGHTENING TORQUE: 16 IN/LBS
3. WIRE RANGE: 4-14 AWG.

THE COMPONENT, PART OR ASSEMBLY DESCRIBED IN THIS DOCUMENT MUST COMPLY WITH THE EU(EUROPEAN UNION) DIRECTIVE RoHS2		MATERIAL		CONFIDENTIAL AND PROPRIETARY INFORMATION THIS DOCUMENT CONTAINS CONFIDENTIAL AND PROPRIETARY INFORMATION OF MTE CORPORATION AND MAY NOT BE USED, COPIED OR DISCLOSED TO OTHERS EXCEPT WITH THE AUTHORIZED WRITTEN PERMISSION OF MTE CORPORATION			
CONTAINS <0.1% OF ANY SVHC BY WEIGHT PER REACH REGULATION				DESCRIPTION			
<div>UNLESS OTHERWISE SPECIFIED DIMENSIONS ARE IN INCHES [MM] TOLERANCES ARE:</div> <div>ANGLES: ± 1 °</div> <div>1 PLACE .X: ± .1 [2.5]</div> <div>2 PLACE .XX: ± .03 [0.76]</div> <div>3 PLACE .XXX: ± .010 [0.254]</div> <div><div><div>MTE</div><div>POWER QUALITY. SOLVED.</div></div><div>N83 W13330 Leon Road Menomonee Falls, WI 53051 USA 800.455.4683 262.253.8200</div></div>				MATRIX AP 786A 480V 60HZ OPEN PANEL			
		DRAWN	DATE	SIZE	DWG No.	REV	
		DP	06/27/12	D	CD MAPP0786D	06	
		CHECKED	DATE	SCALE	1:4	SHEET 1 OF 1	
		JM	02/08/17				
		APPROVED	DATE				
		JM	02/08/17				