

APPROX. WEIGHT
(LBS)
533

ECO No	DESCRIPTION	REV BY	DATE
M9777	CHANGED CAPPANEL-544 TO 544C	MN	03/21/16

D

C

B

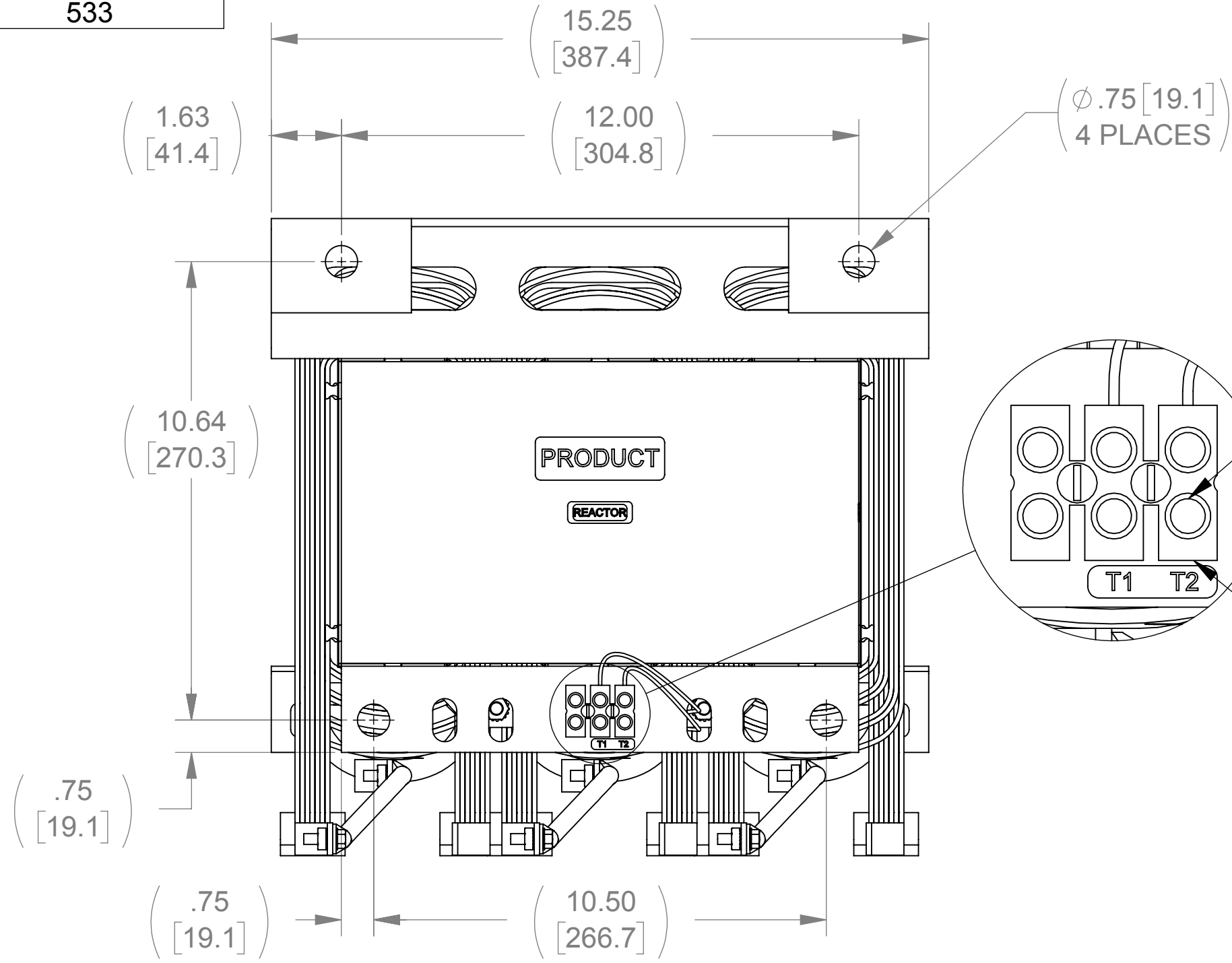
A

D

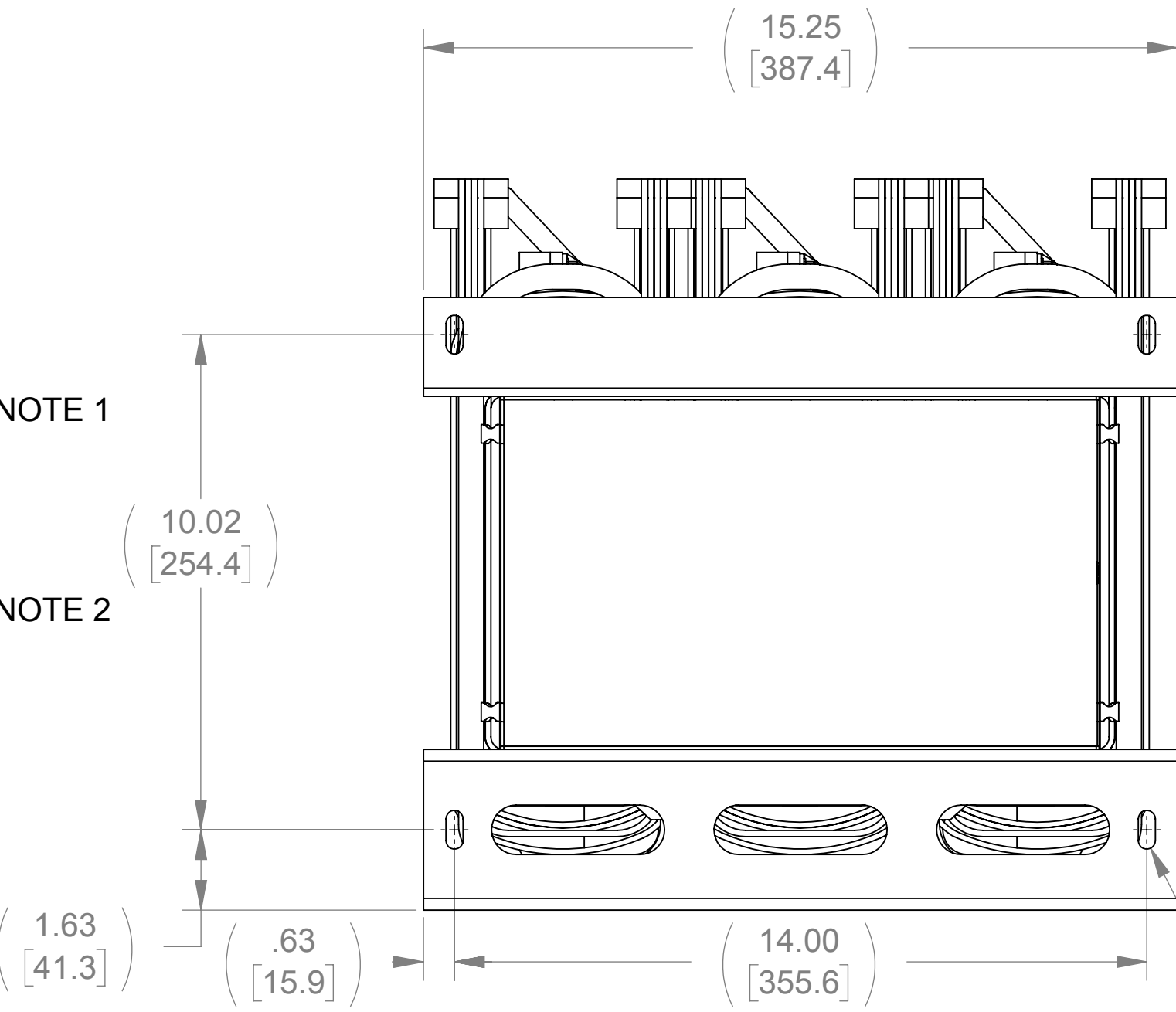
C

B

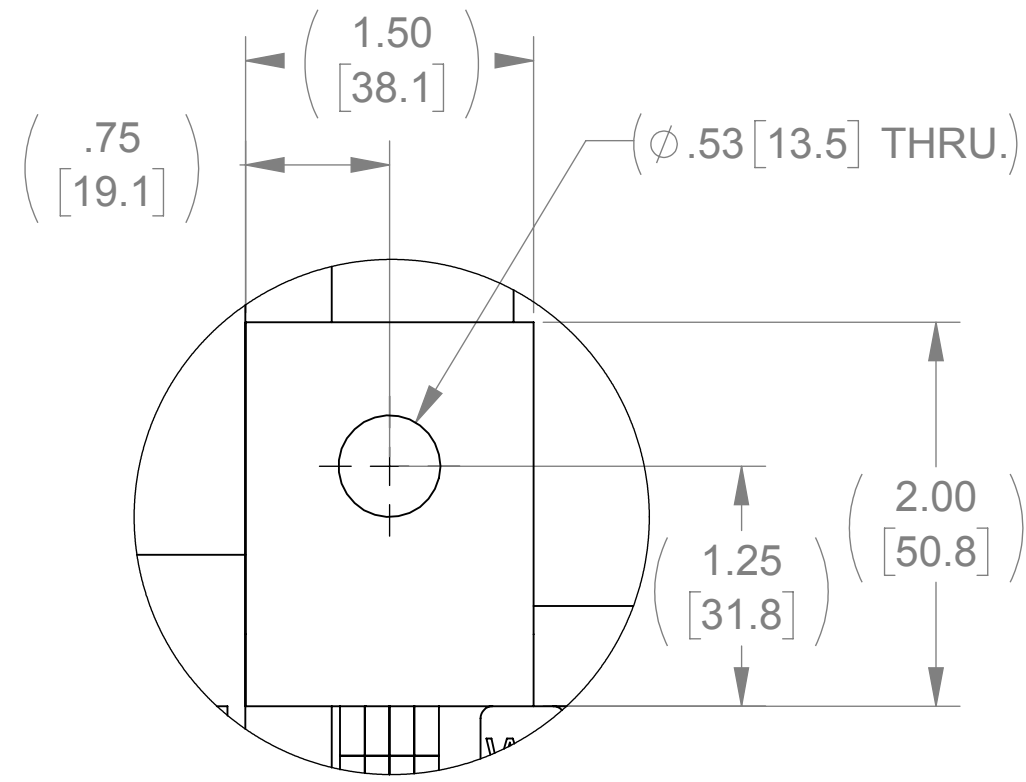
A



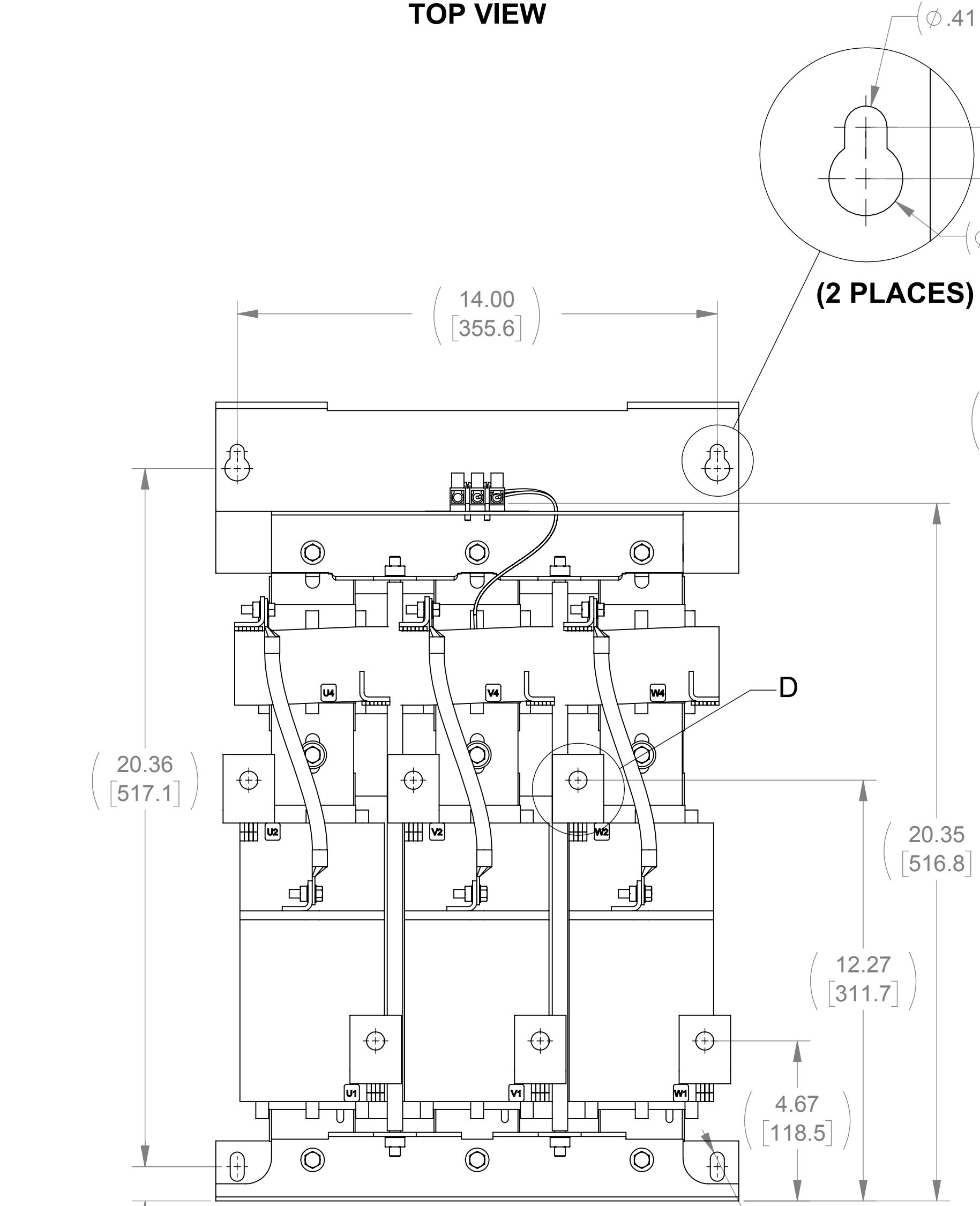
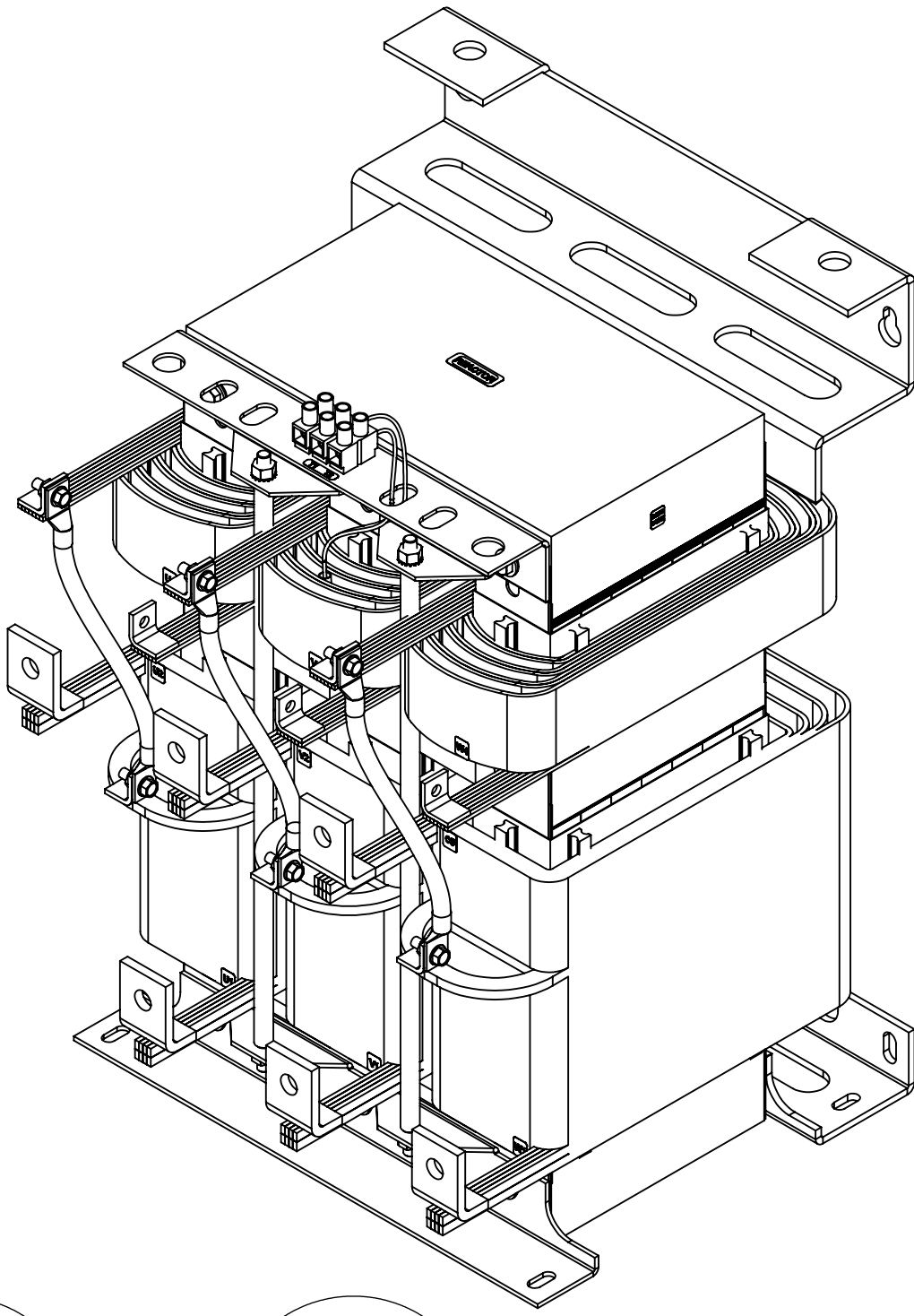
TOP VIEW



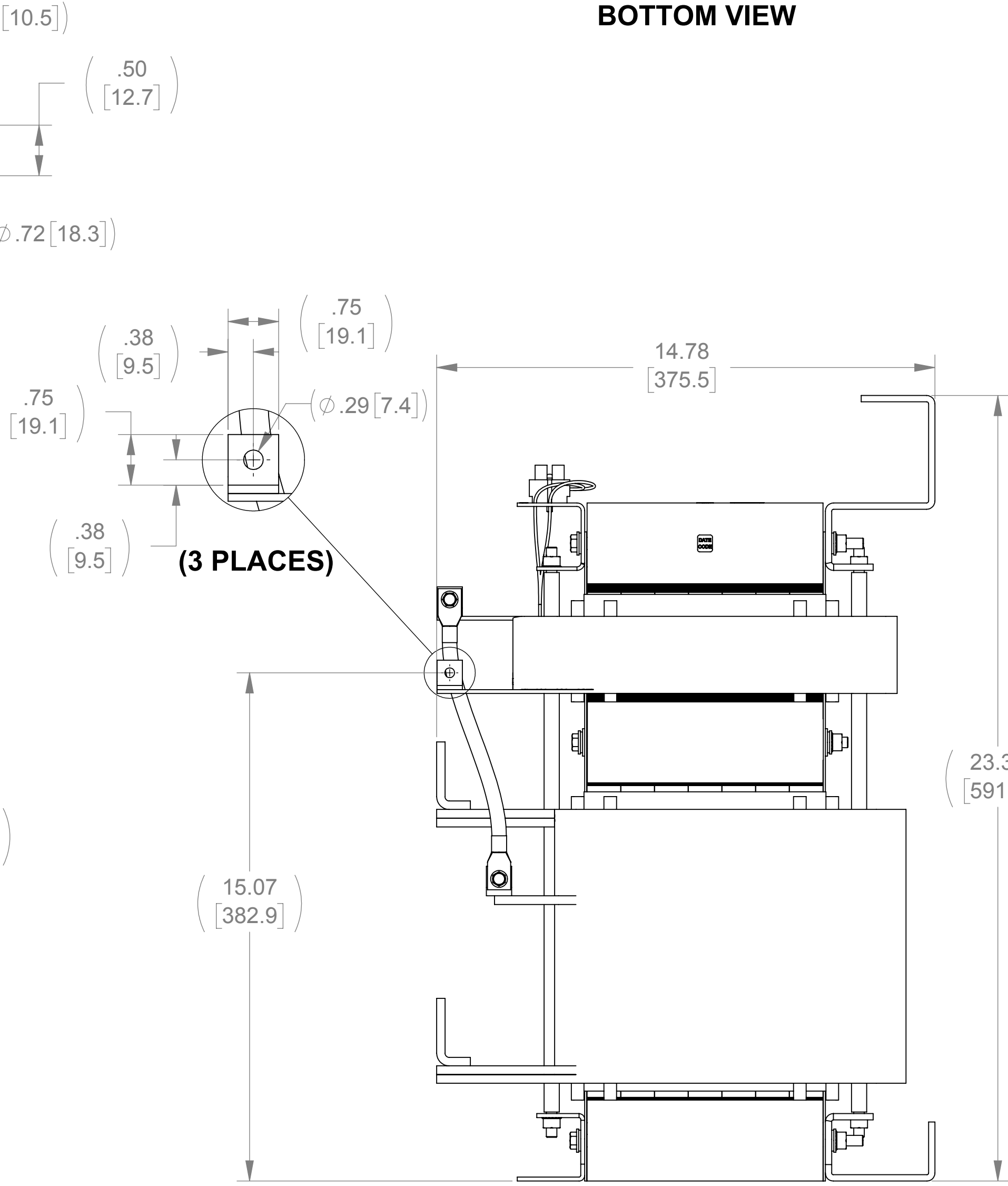
BOTTOM VIEW



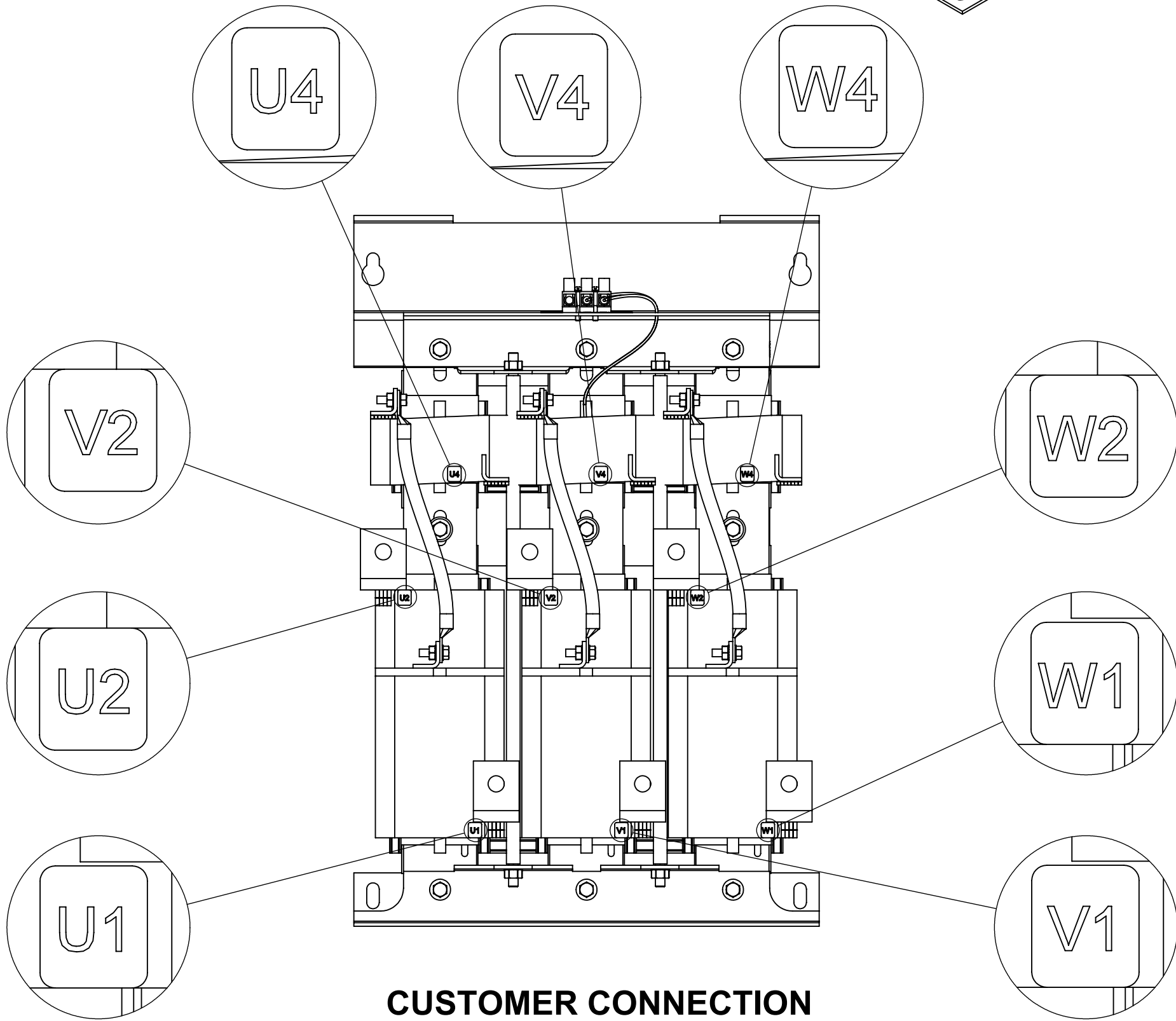
DETAIL D
(6 PLACES)



FRONT VIEW




RIGHT SIDE VIEW



CUSTOMER CONNECTION
DETAIL VIEW

- NOTES:**
1. FILTER INCLUDES CAPPANEL-544C (QTY. 2).
 2. TERMINAL SCREW TIGHTENING TORQUE: 16 IN/LBS.
 3. WIRE RANGE: 4-14 AWG.

THE COMPONENT, PART OR ASSEMBLY DESCRIBED IN THIS DOCUMENT MUST COMPLY WITH THE EU(EUROPEAN UNION) DIRECTIVE RoHS		MATERIAL		CONFIDENTIAL AND PROPRIETARY INFORMATION THIS DOCUMENT CONTAINS CONFIDENTIAL AND PROPRIETARY INFORMATION OF MTE CORPORATION AND MAY NOT BE USED, COPIED OR DISCLOSED TO OTHERS EXCEPT WITH THE AUTHORIZED WRITTEN PERMISSION OF MTE CORPORATION							
CONTAINS <0.1% OF ANY SVHC BY WEIGHT PER REACH REGULATION											
<div>UNLESS OTHERWISE SPECIFIED DIMENSIONS ARE IN INCHES [MM] TOLERANCES ARE:</div> <div>ANGLES: ± 1 °</div> <div>1 PLACE .X: ± .1 [2.5]</div> <div>2 PLACE .XX: ± .03 [0.76]</div> <div>3 PLACE .XXX: ± .010 [0.254]</div> <div><div><div>AN BL POWER ELECTRONICS COMPANY</div></div><div>N83 W13330 Leon Road Menomonee Falls, WI 53051 USA 800.455.4683 262.253.8200</div></div>		DRAWN		DATE		DESCRIPTION MATRIX AP 482A 480V 60HZ OPEN PANEL					
		JS		12/20/11							
		CHECKED		DATE		SIZE D		DWG No. CD MAPP0482D		REV 06	
		JM		04/18/16							
		APPROVED		DATE							
		JM		04/18/16		SCALE 1:3		SHEET 1 OF 1			