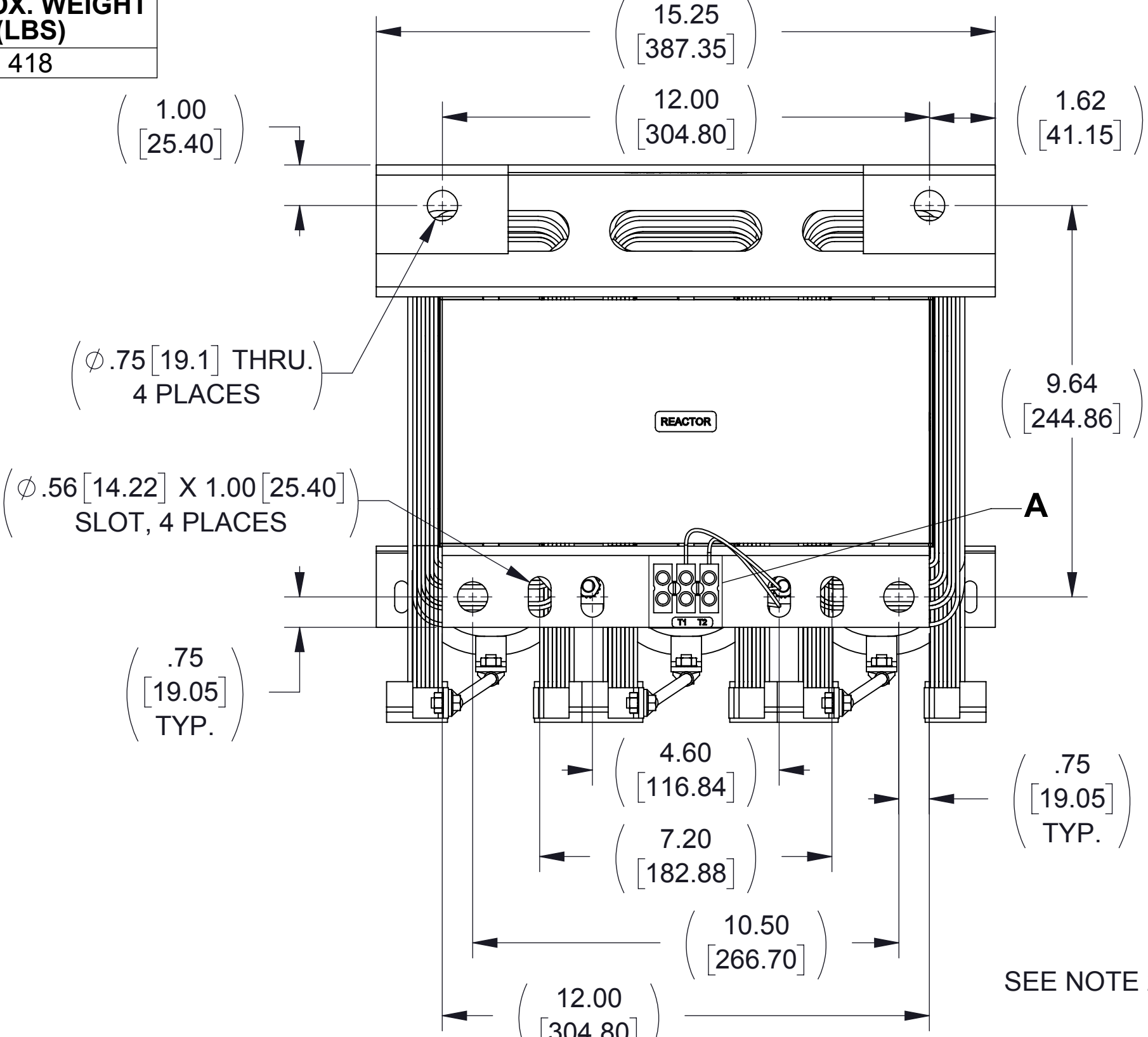
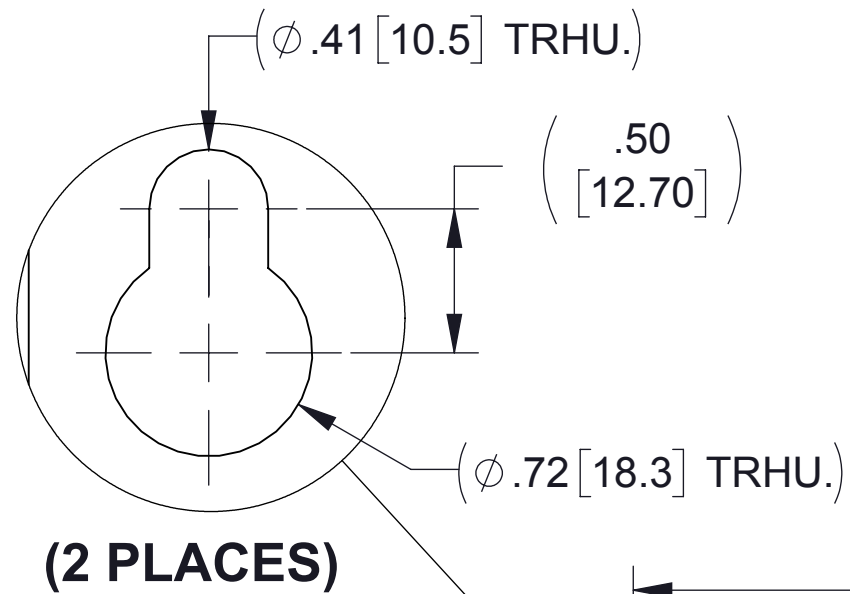


APPROX. WEIGHT
(LBS)
418

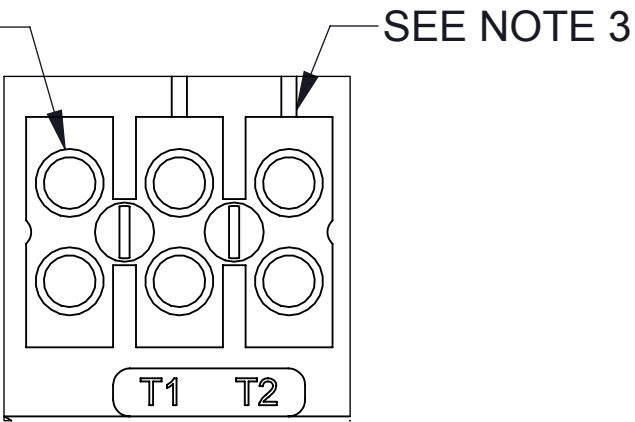
ECO No	DESCRIPTION	REV BY	DATE
M9921	REPLACE CAPPANEL-562 WITH CAPPANEL-562C	SL	01/04/17



TOP VIEW

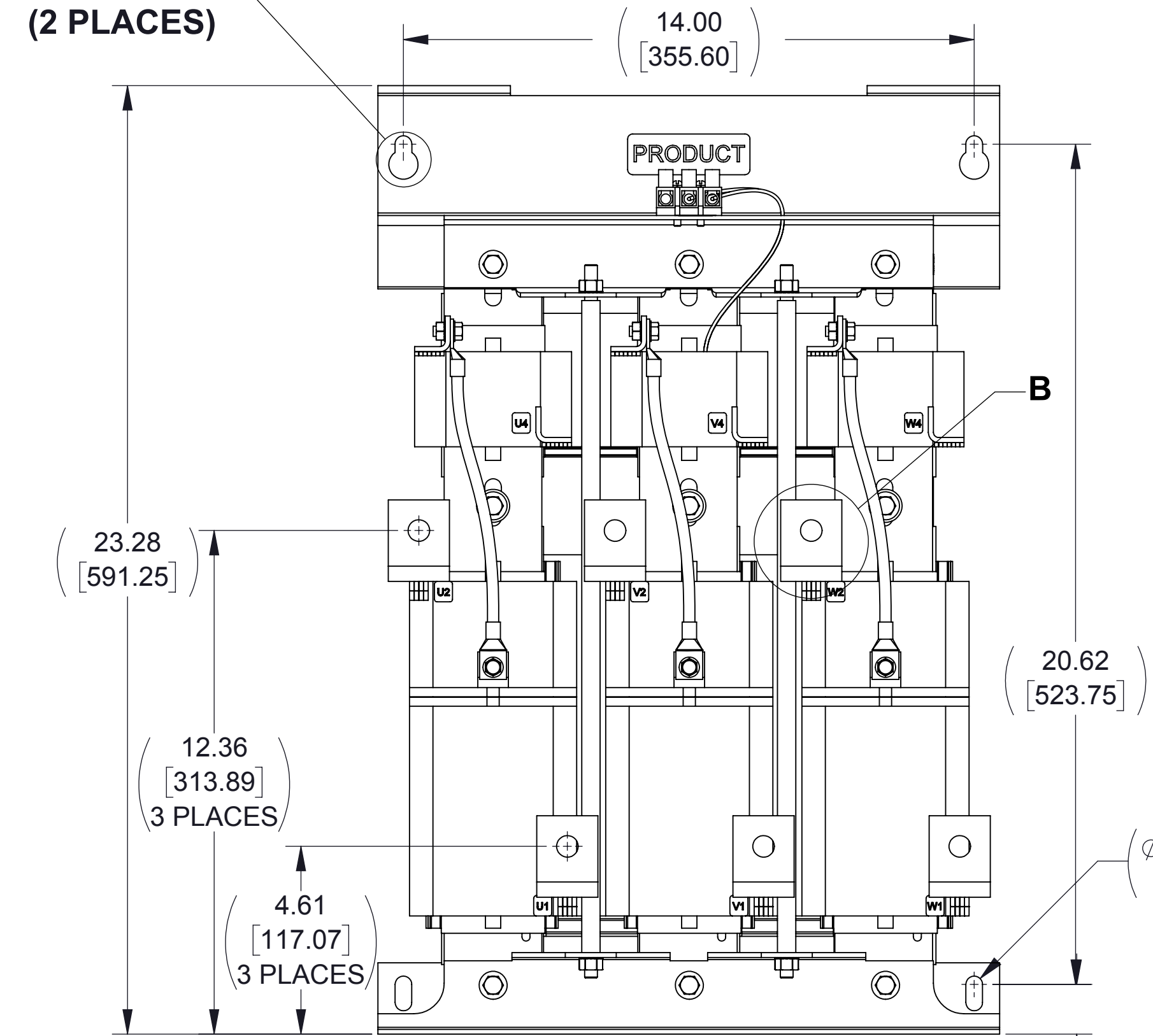


DETAIL A
CUSTOMER CONNECTION
DETAIL VIEW (THERMAL)

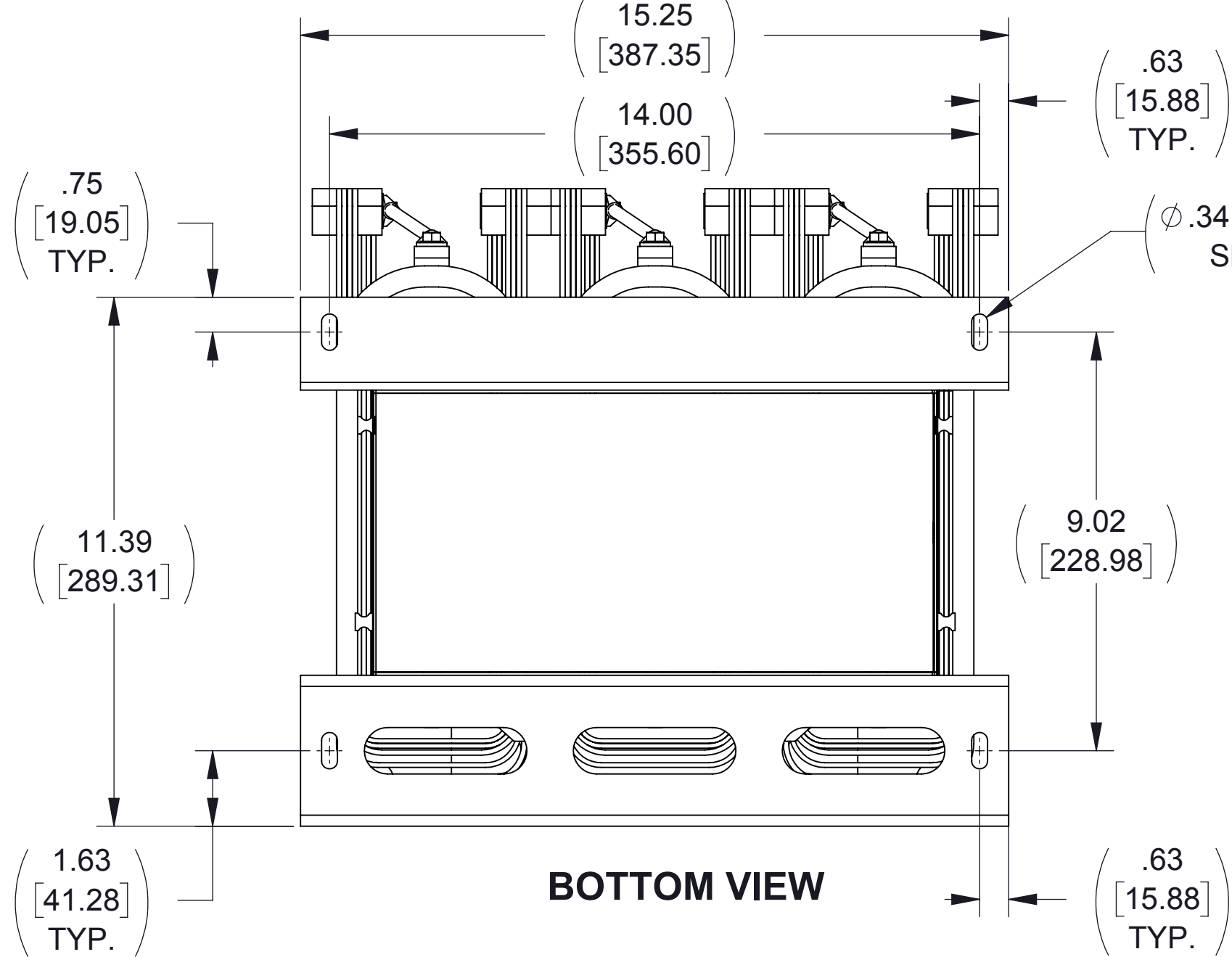


SEE NOTE 2

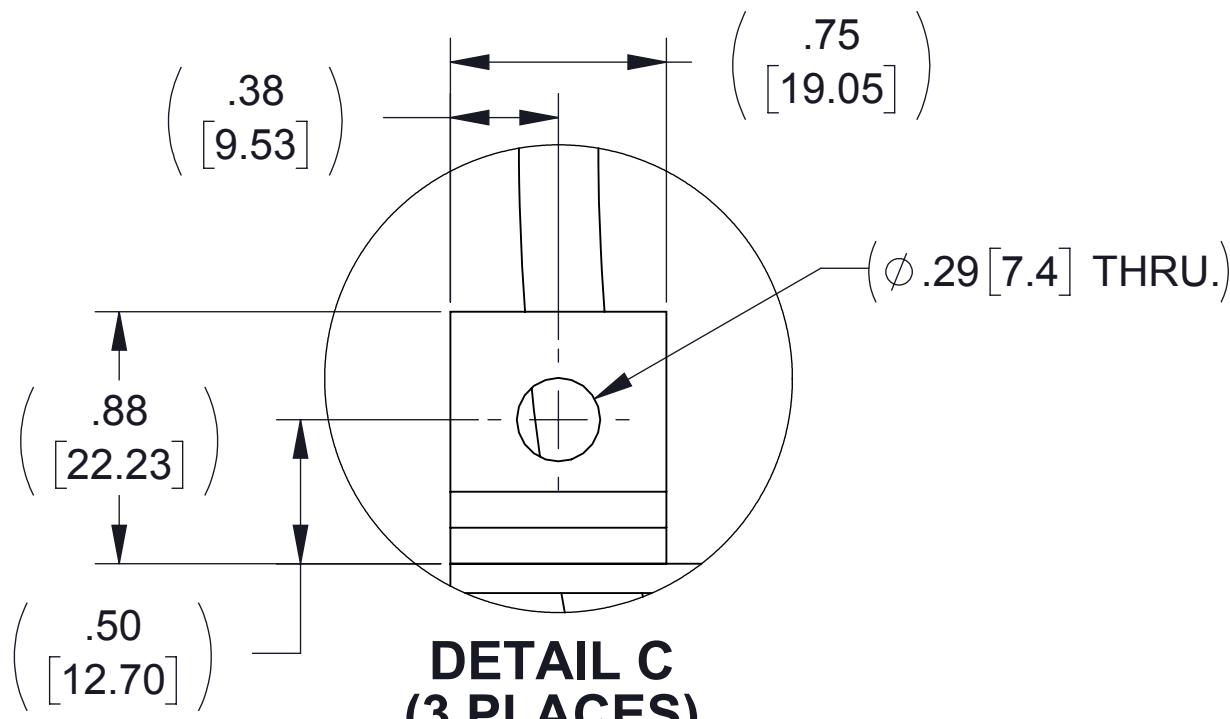
SEE NOTE 3



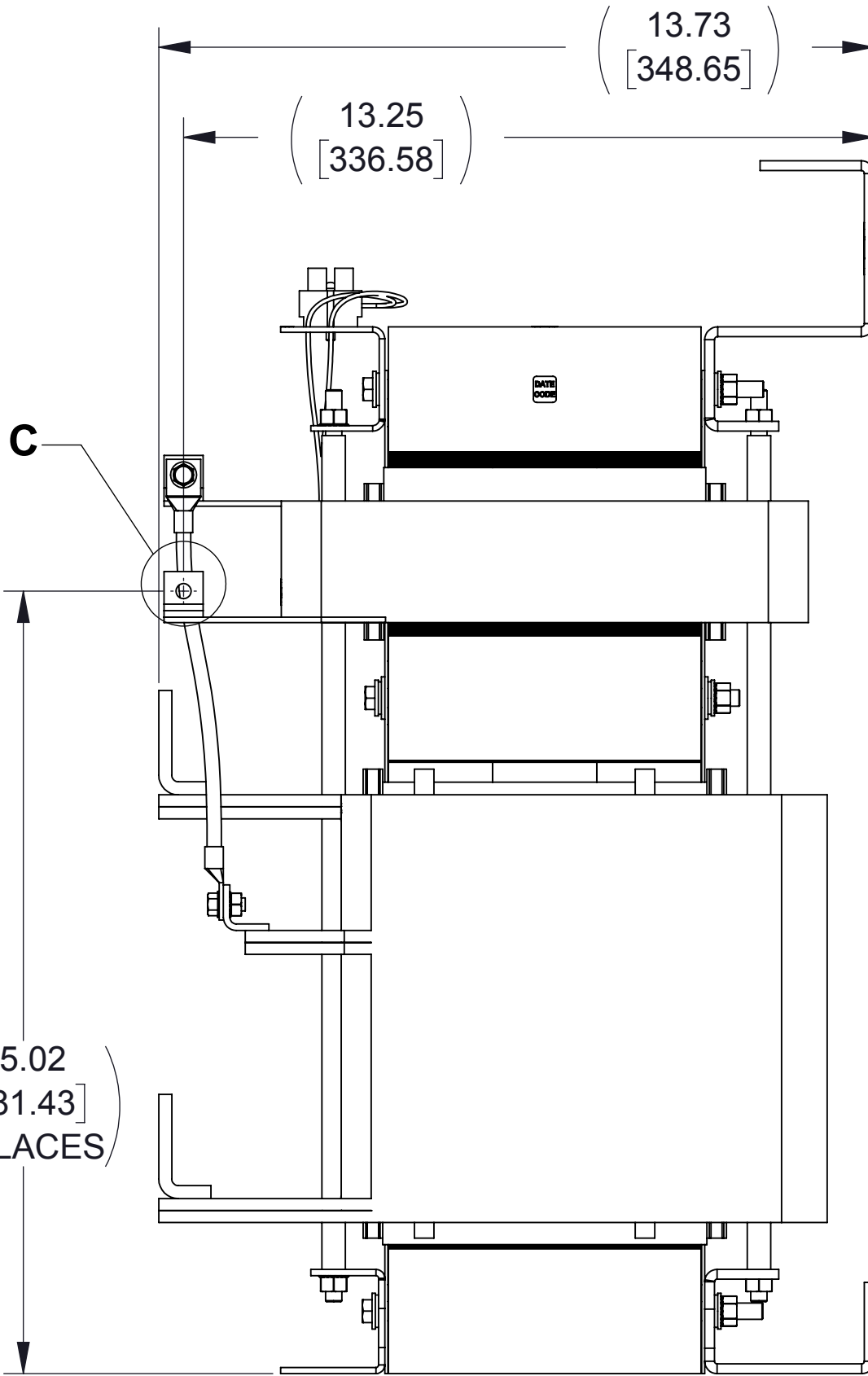
FRONT VIEW



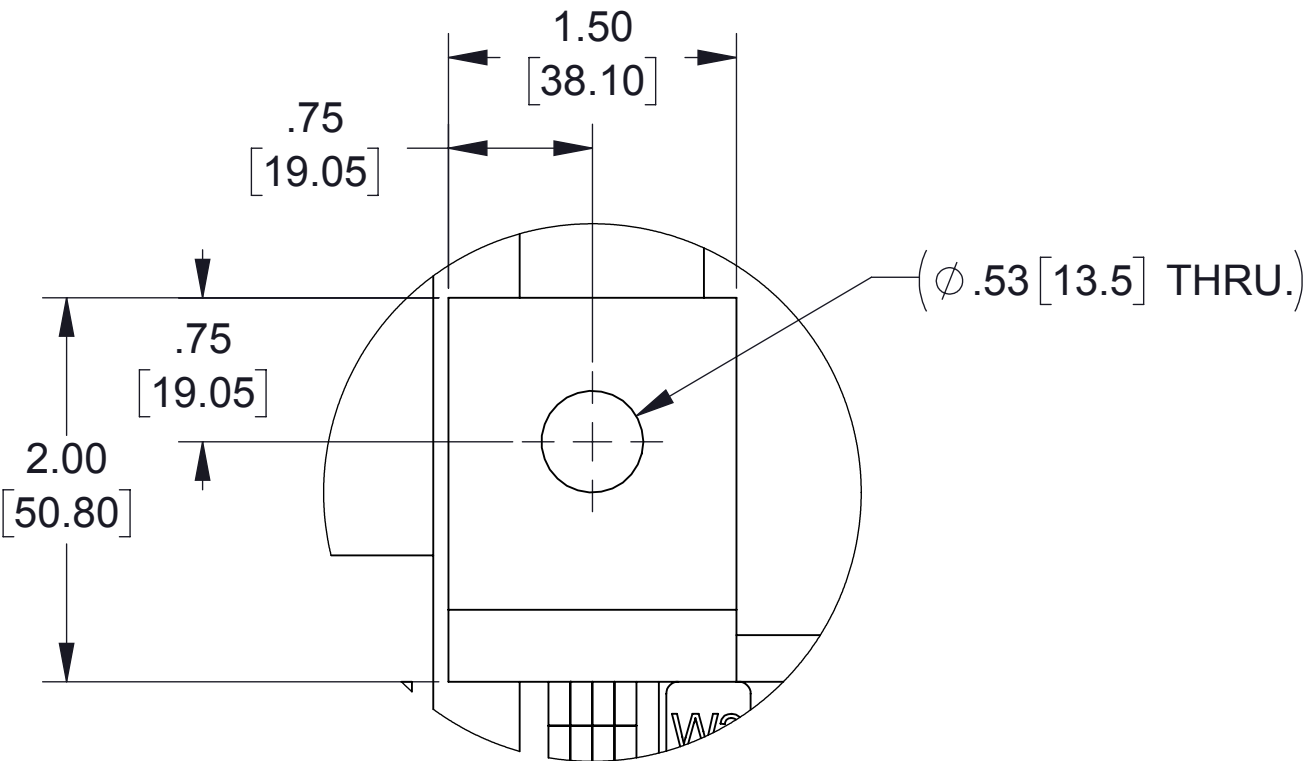
BOTTOM VIEW



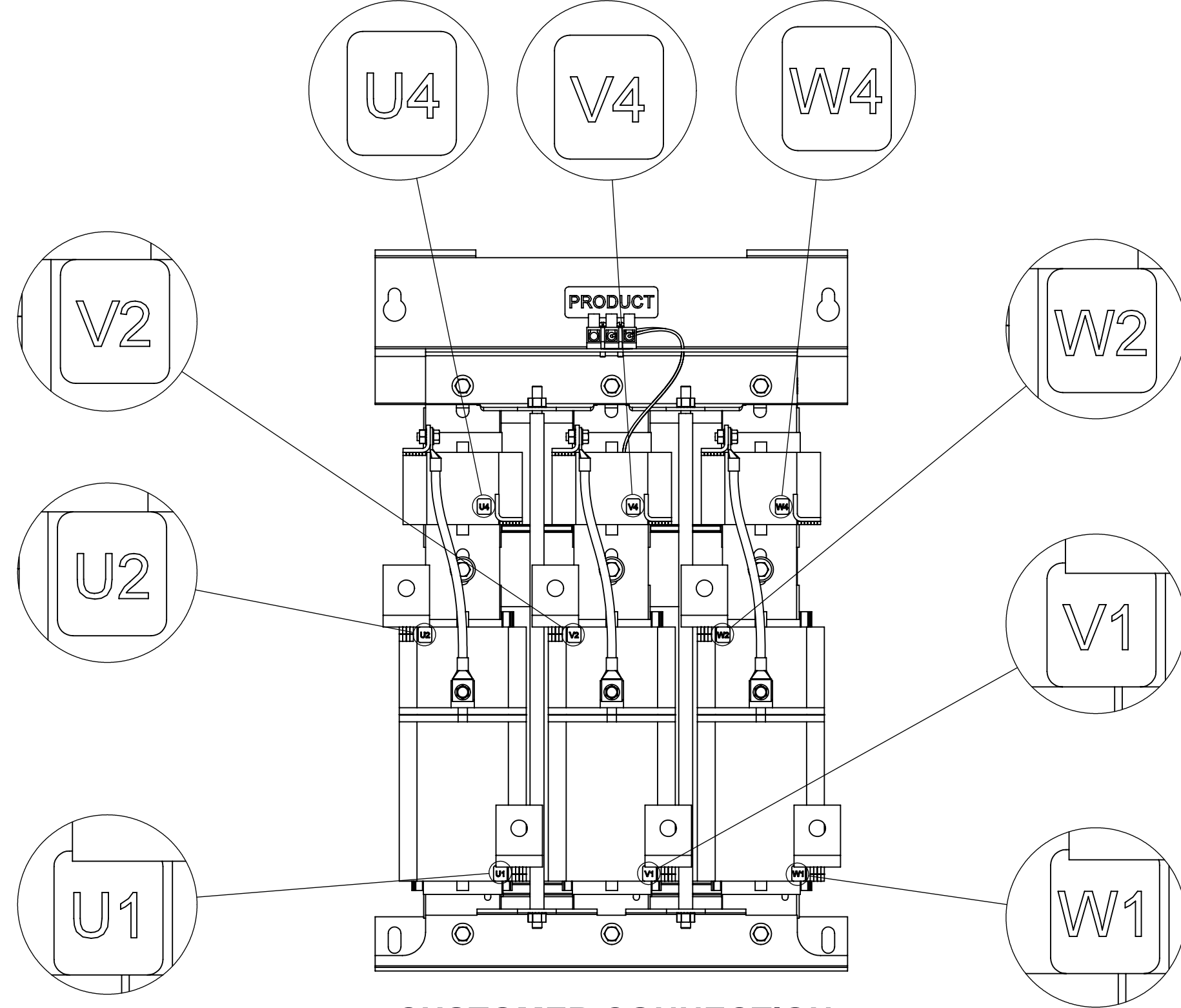
DETAIL C
(3 PLACES)



SIDE VIEW



DETAIL B
(6 PLACES)



CUSTOMER CONNECTION
DETAIL VIEW

- NOTES:
1. FILTER REQUIRES CAPPANEL-562C (QTY. 1).
 2. TERMINAL SCREW TIGHTENING TORQUE: 16 IN/LBS
 3. WIRE RANGE: 4-14 AWG.

THE COMPONENT, PART OR ASSEMBLY DESCRIBED IN THIS DOCUMENT MUST COMPLY WITH THE EU (EUROPEAN UNION) DIRECTIVE RoHS2		MATERIAL		CONFIDENTIAL AND PROPRIETARY INFORMATION THIS DOCUMENT CONTAINS CONFIDENTIAL AND PROPRIETARY INFORMATION OF MTE CORPORATION AND MAY NOT BE USED, COPIED OR DISCLOSED TO OTHERS EXCEPT WITH THE AUTHORIZED WRITTEN PERMISSION OF MTE CORPORATION	
CONTAINS <0.1% OF ANY SVHC BY WEIGHT PER REACH REGULATION				DESCRIPTION	
UNLESS OTHERWISE SPECIFIED DIMENSIONS ARE IN INCHES [MM] TOLERANCES ARE: ANGLES: ± 1 ° 1 PLACE .X: ± .1 [2.5] 2 PLACE .XX: ± .03 [0.76] 3 PLACE .XXX: ± .010 [0.254]		DRAWN JS 05/23/12		DATE 05/23/12	
		CHECKED JM 01/17/17		DATE 01/17/17	
		APPROVED JM 01/17/17		DATE 01/17/17	
		SIZE D		DWG No. CD MAPP0403D	
		SCALE 1:3		REV 03	
				SHEET 1 OF 1	



N83 W13330 Leon Road
Menomonee Falls, WI 53051 USA
800.455.4683
262.253.8200