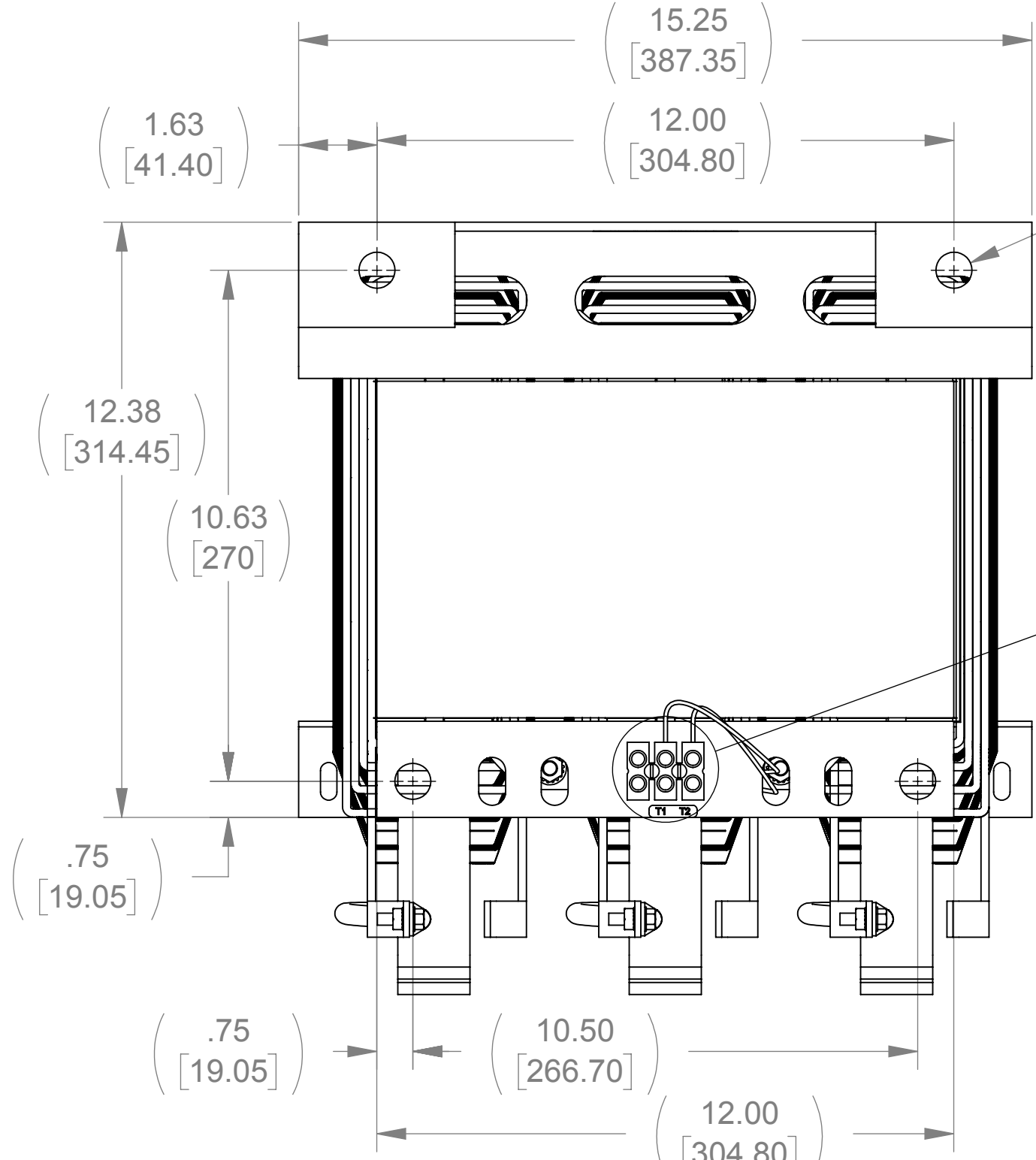
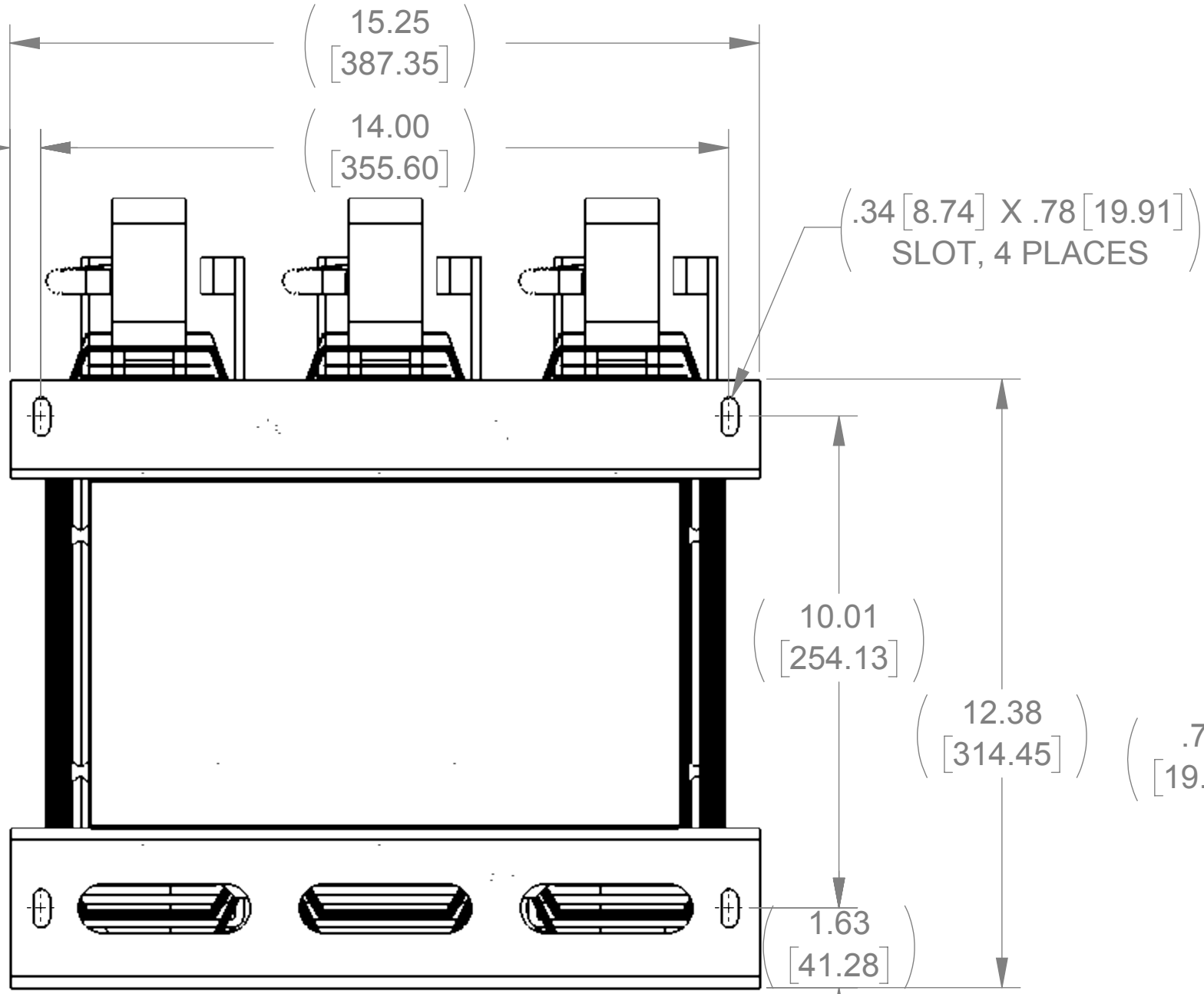


APPROX. WEIGHT
(LBS)
500

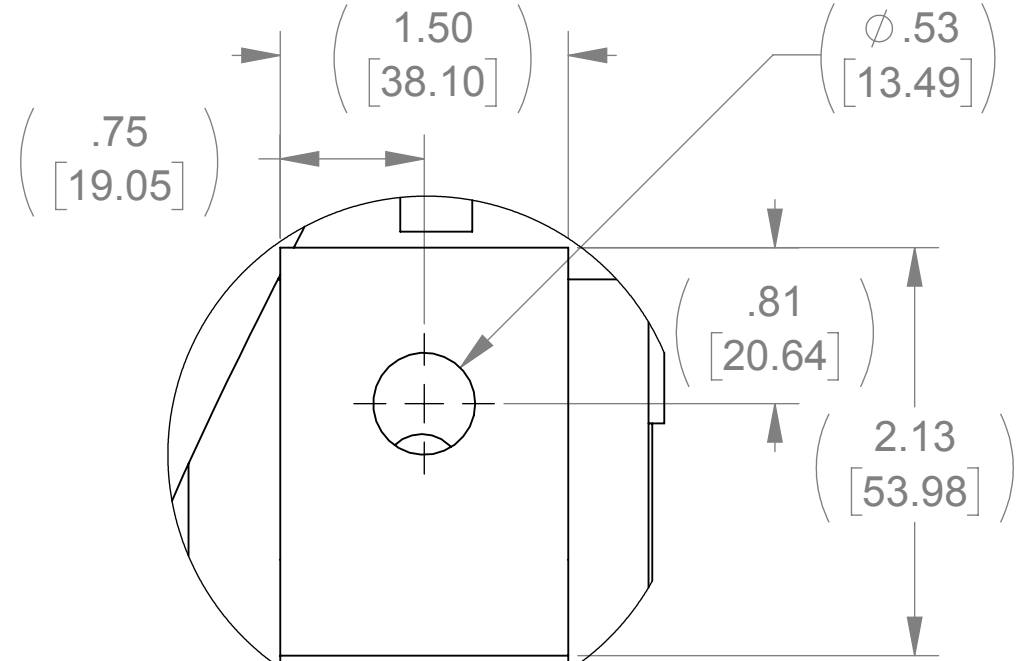
ECO No	DESCRIPTION	REV BY	DATE
M9834	REPLACED CAPPANEL-576 WITH 576C	MN	08/16/16



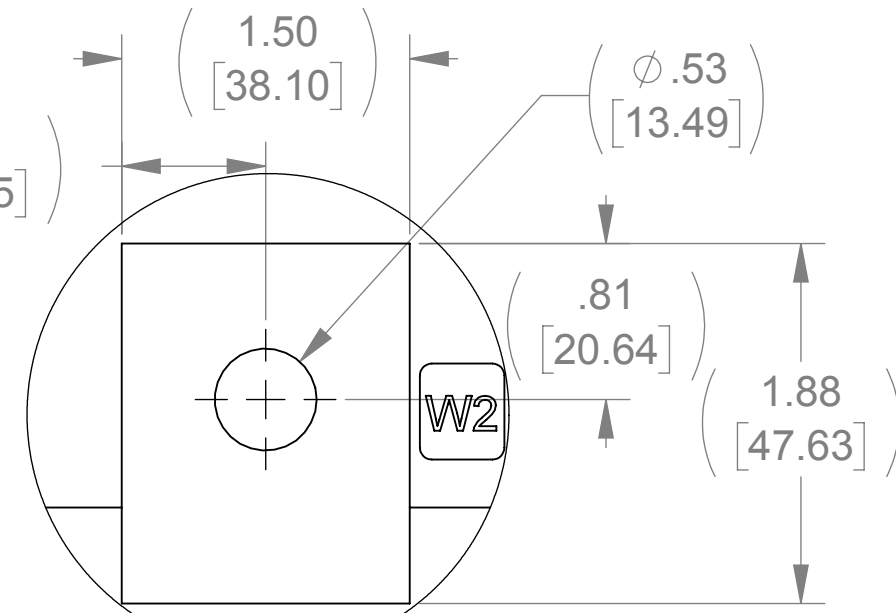
TOP VIEW



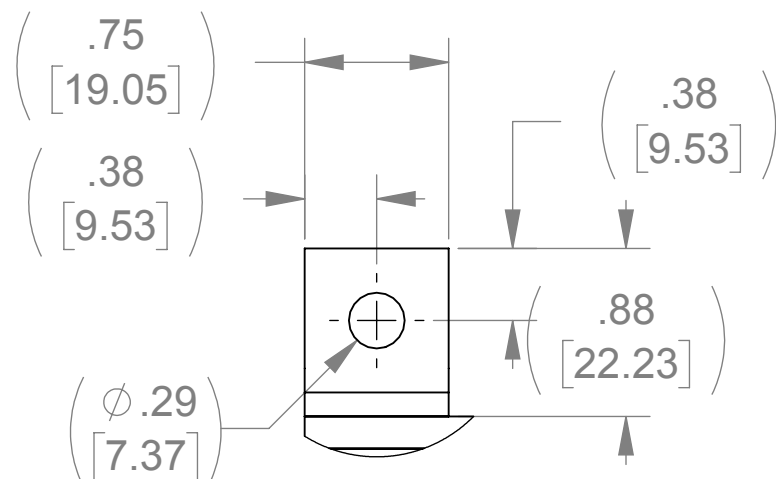
BOTTOM VIEW



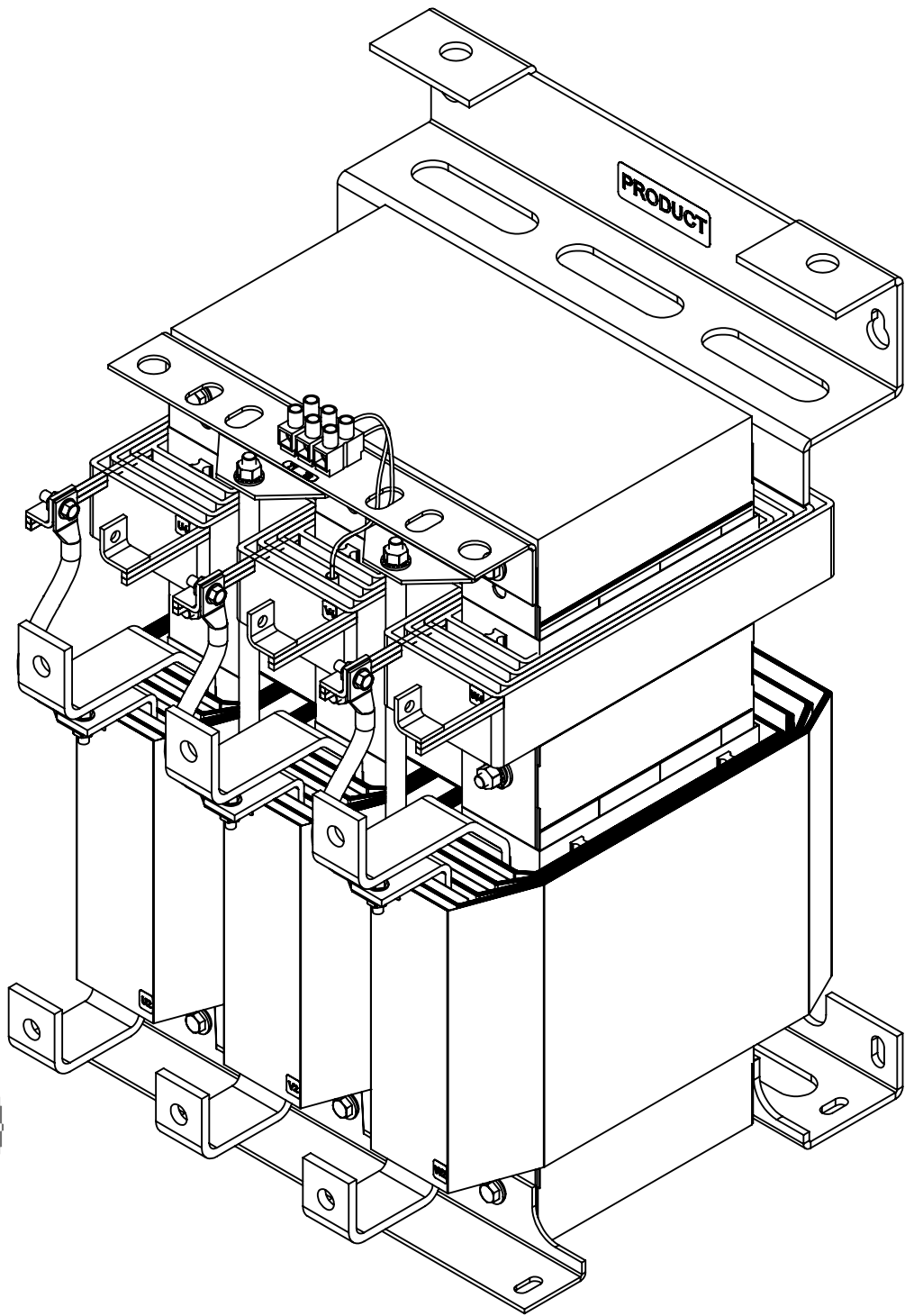
DETAIL B
(3 PLACES)



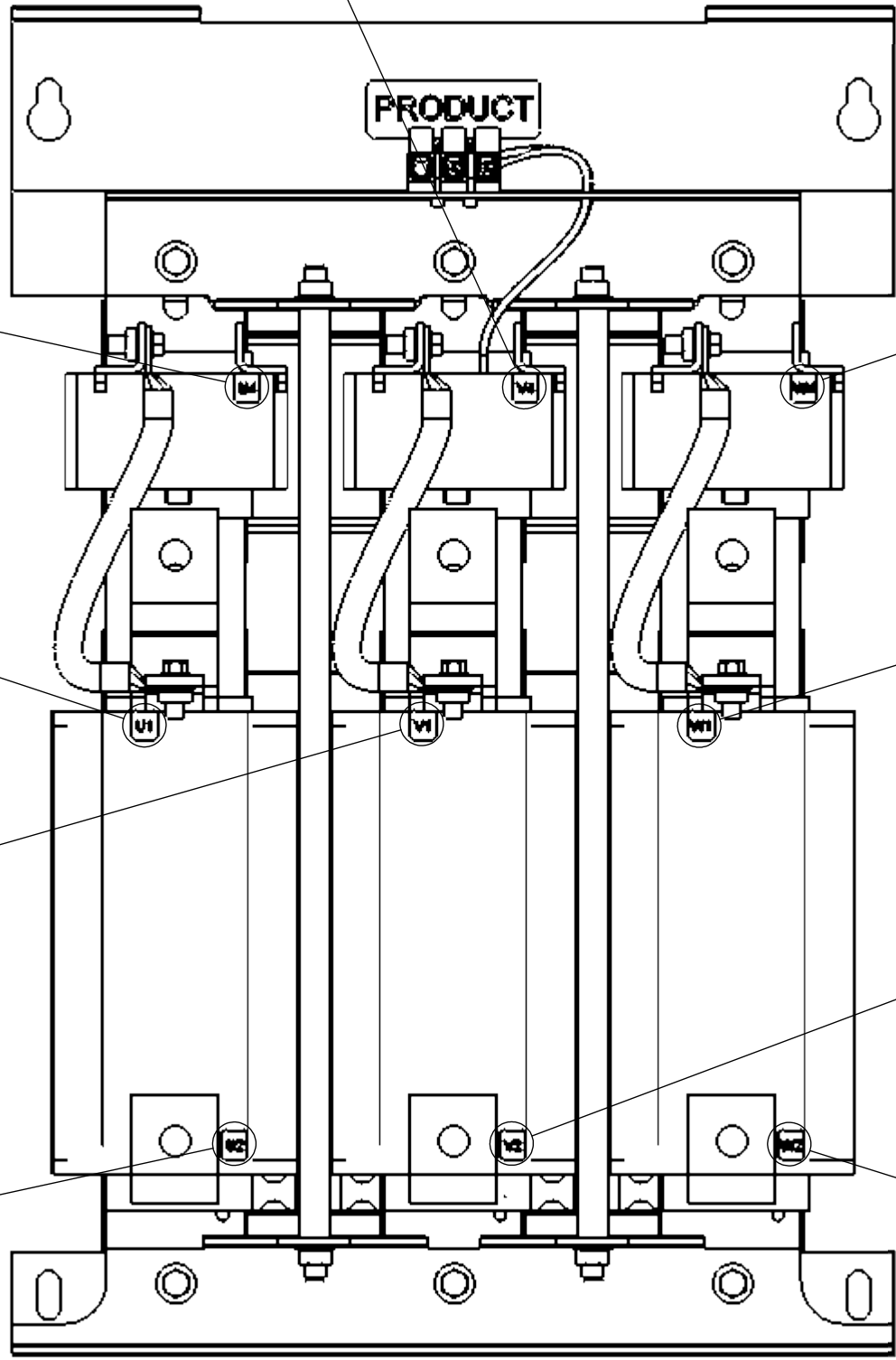
DETAIL C
(3 PLACES)



DETAIL D
(3 PLACES)



V4



CUSTOMER CONNECTION
DETAIL VIEW

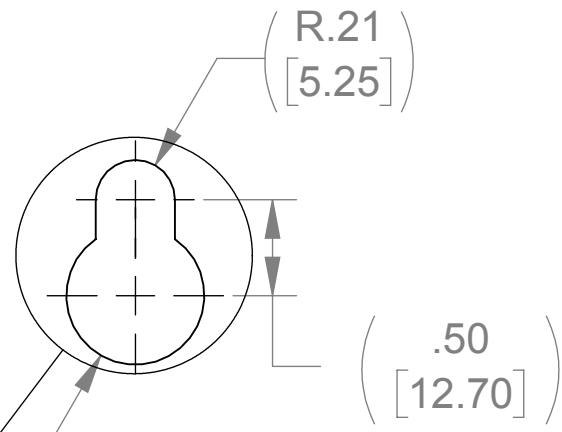
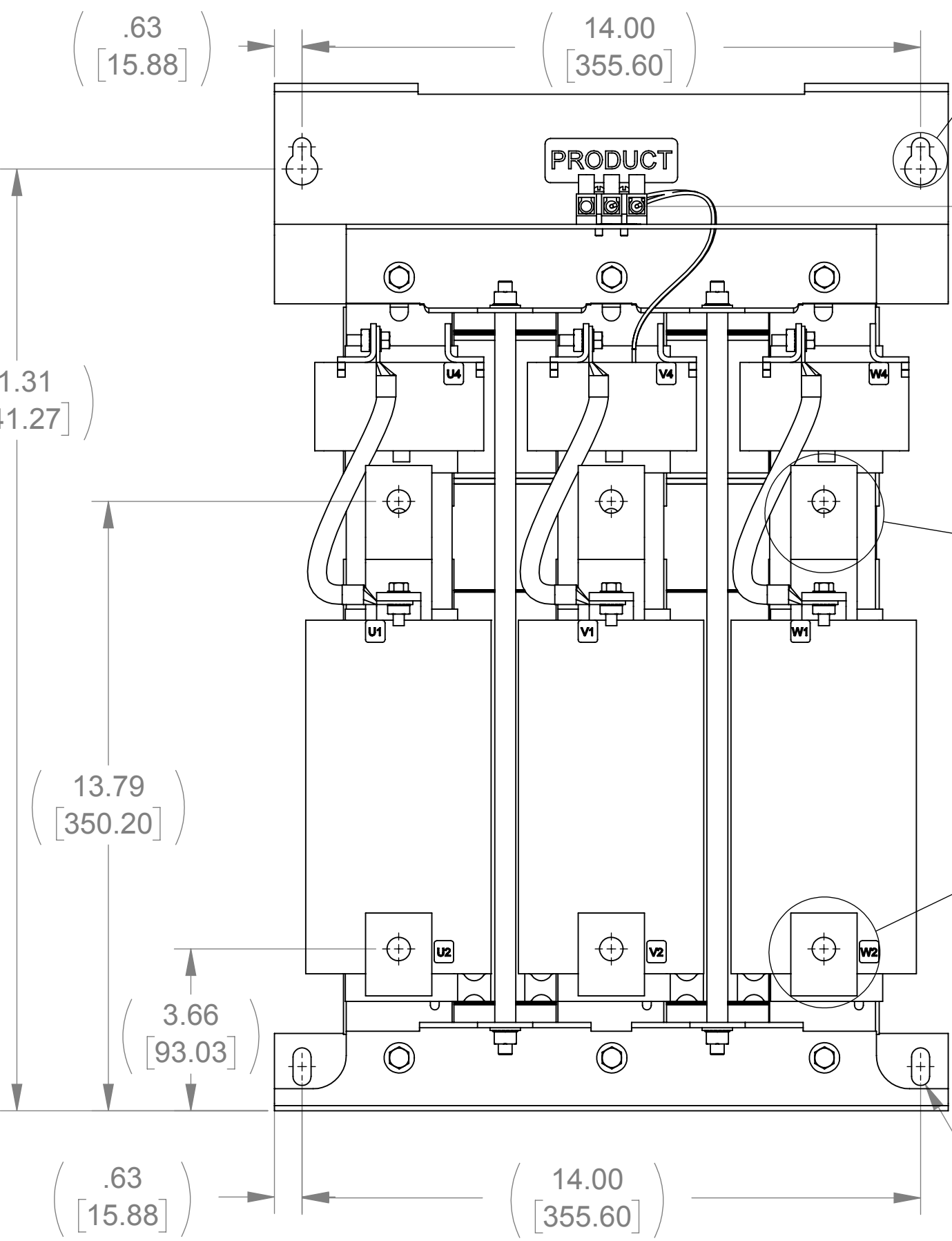
NOTES:

1. FILTER INCLUDES CAPPANEL-576C (QTY 1).
2. TERMINAL SCREW TIGHTENING TORQUE: 16 IN/LBS.
3. WIRE RANGE: 4-14 AWG.

THE COMPONENT, PART OR ASSEMBLY DESCRIBED IN THIS DOCUMENT MUST COMPLY WITH THE EU (EUROPEAN UNION) DIRECTIVE RoHS2		MATERIAL		CONFIDENTIAL AND PROPRIETARY INFORMATION THIS DOCUMENT CONTAINS CONFIDENTIAL AND PROPRIETARY INFORMATION OF MTE CORPORATION AND MAY NOT BE USED, COPIED OR DISCLOSED TO OTHERS EXCEPT WITH THE AUTHORIZED WRITTEN PERMISSION OF MTE CORPORATION	
CONTAINS <0.1% OF ANY SVHC BY WEIGHT PER REACH REGULATION				DESCRIPTION	
UNLESS OTHERWISE SPECIFIED DIMENSIONS ARE IN INCHES [MM] TOLERANCES ARE: ANGLES: ± 1° 1 PLACE .X: ± .1 [2.5] 2 PLACE .XX: ± .03 [0.76] 3 PLACE .XXX: ± .010 [0.254]		DRAWN SU 5/13/13 CHECKED JM 11/21/16 APPROVED JM 11/21/16		MATRIX AP 320A 600V 60HZ OPEN PANEL	
N83 W13330 Leon Road Menomonee Falls, WI 53051 USA 800.455.4683 262.253.8200		SIZE D CD MAPP0320E SCALE 1:3		REV 05 SHEET 1 OF 1	

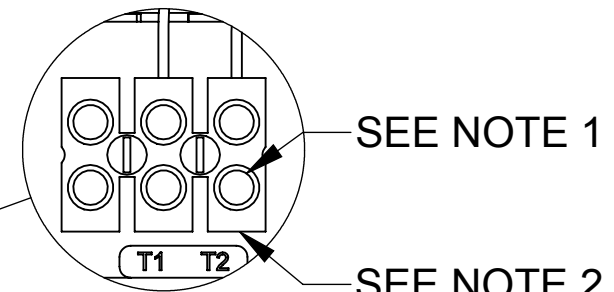
RIGHT SIDE VIEW

FRONT VIEW



DETAIL A
(2 PLACES)

CUSTOMER CONNECTION
DETAIL VIEW (THERMAL)



SEE NOTE 1

SEE NOTE 2