

APPROX. WEIGHT
(LBS)
418

ECO No	DESCRIPTION	REV BY	DATE
M9783	CHANGED CAPPANEL-543 TO 543C	MN	02/23/16

D

C

B

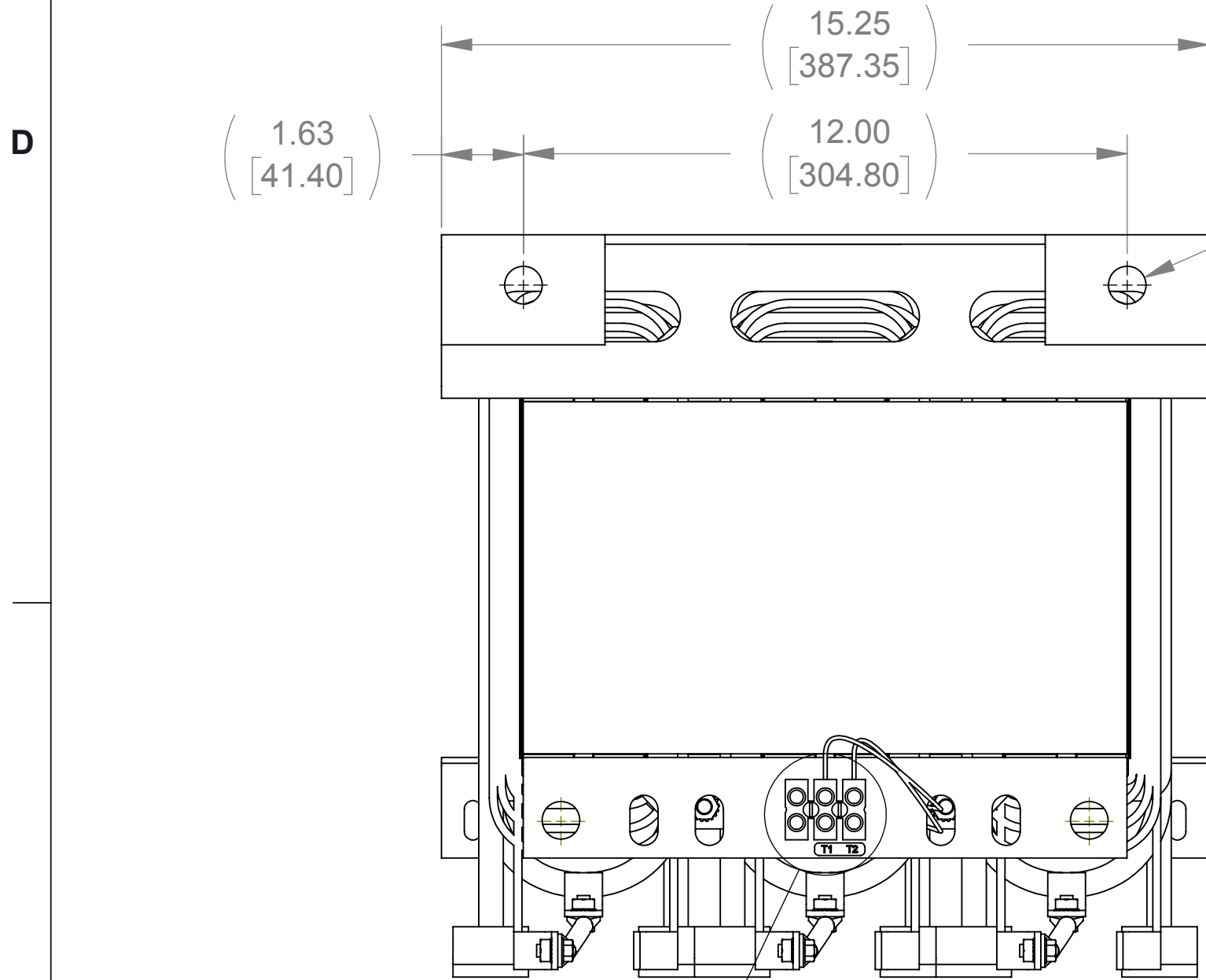
A

D

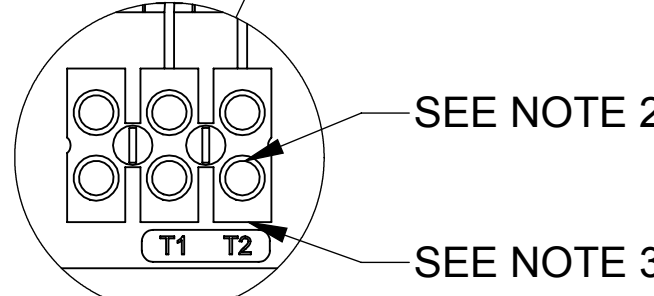
C

B

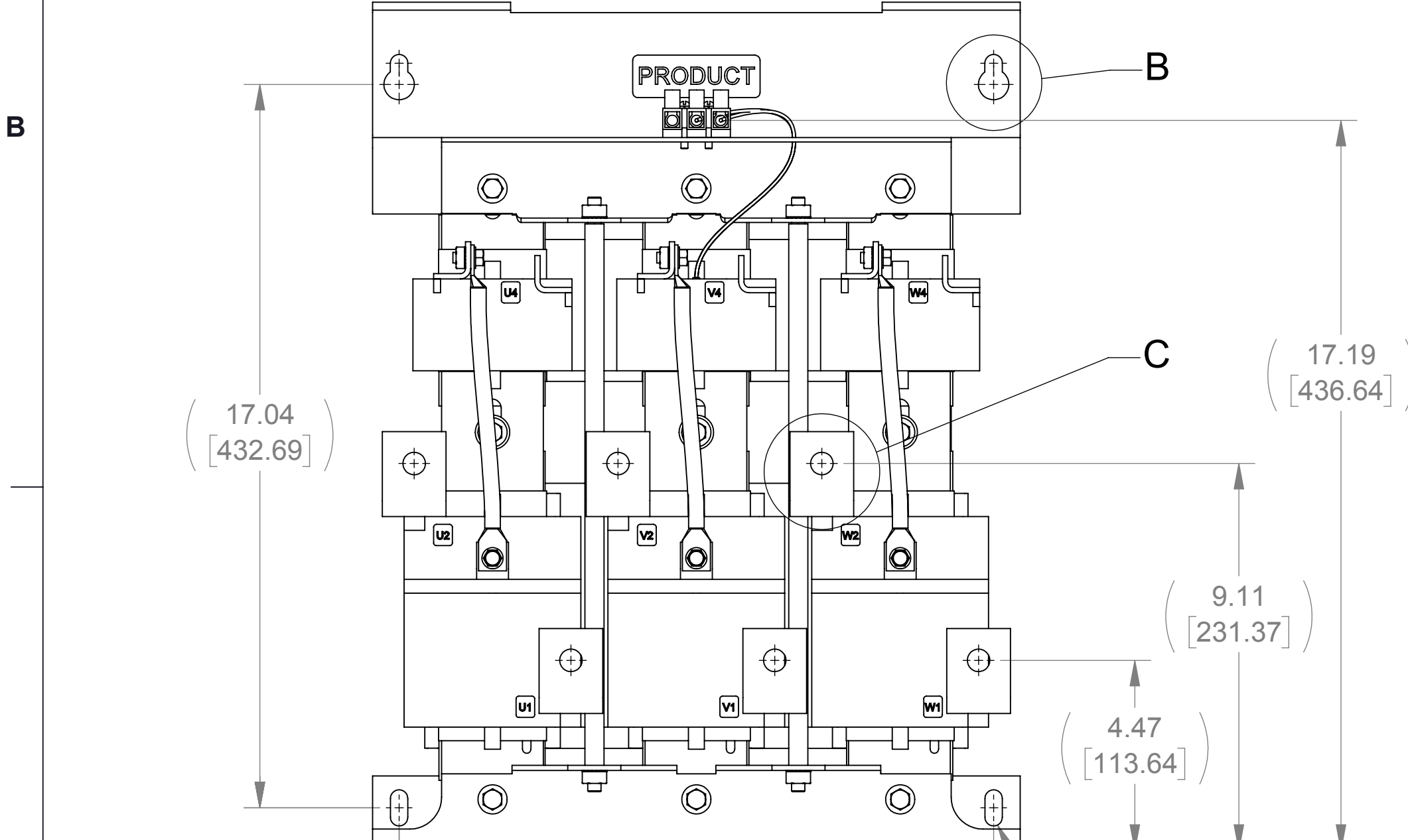
A



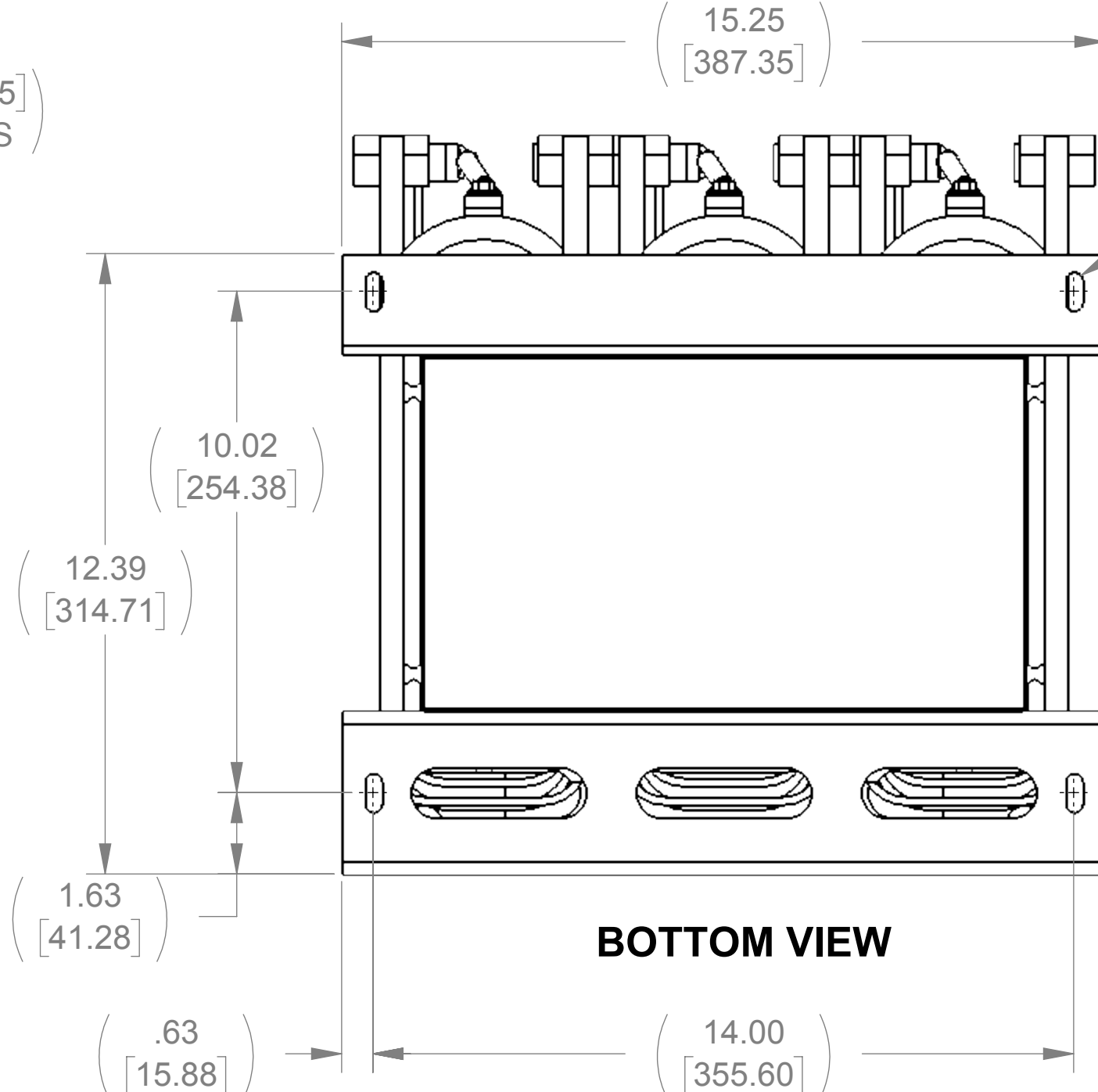
TOP VIEW



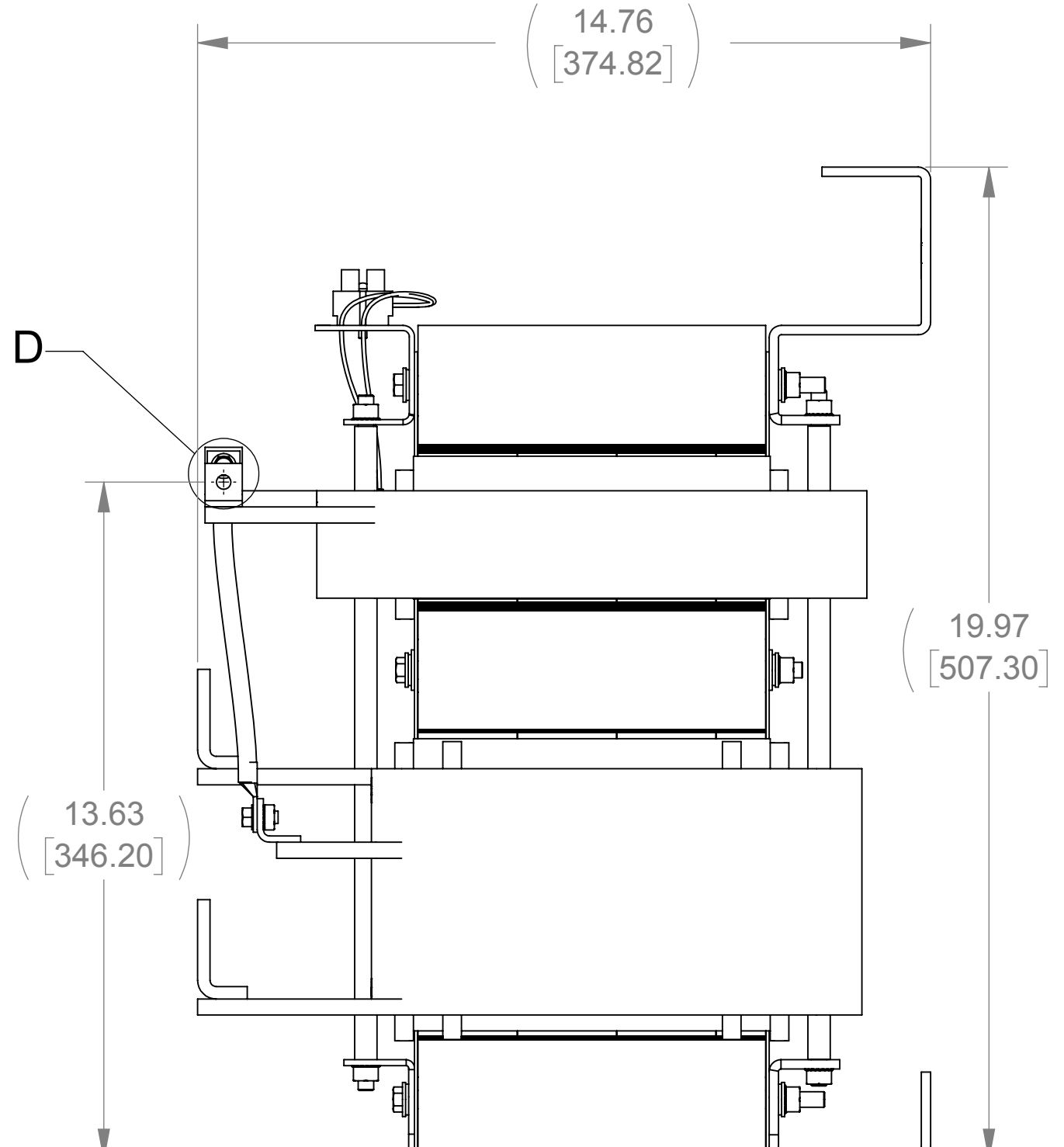
CUSTOMER CONNECTION
DETAIL VIEW (THERMAL)



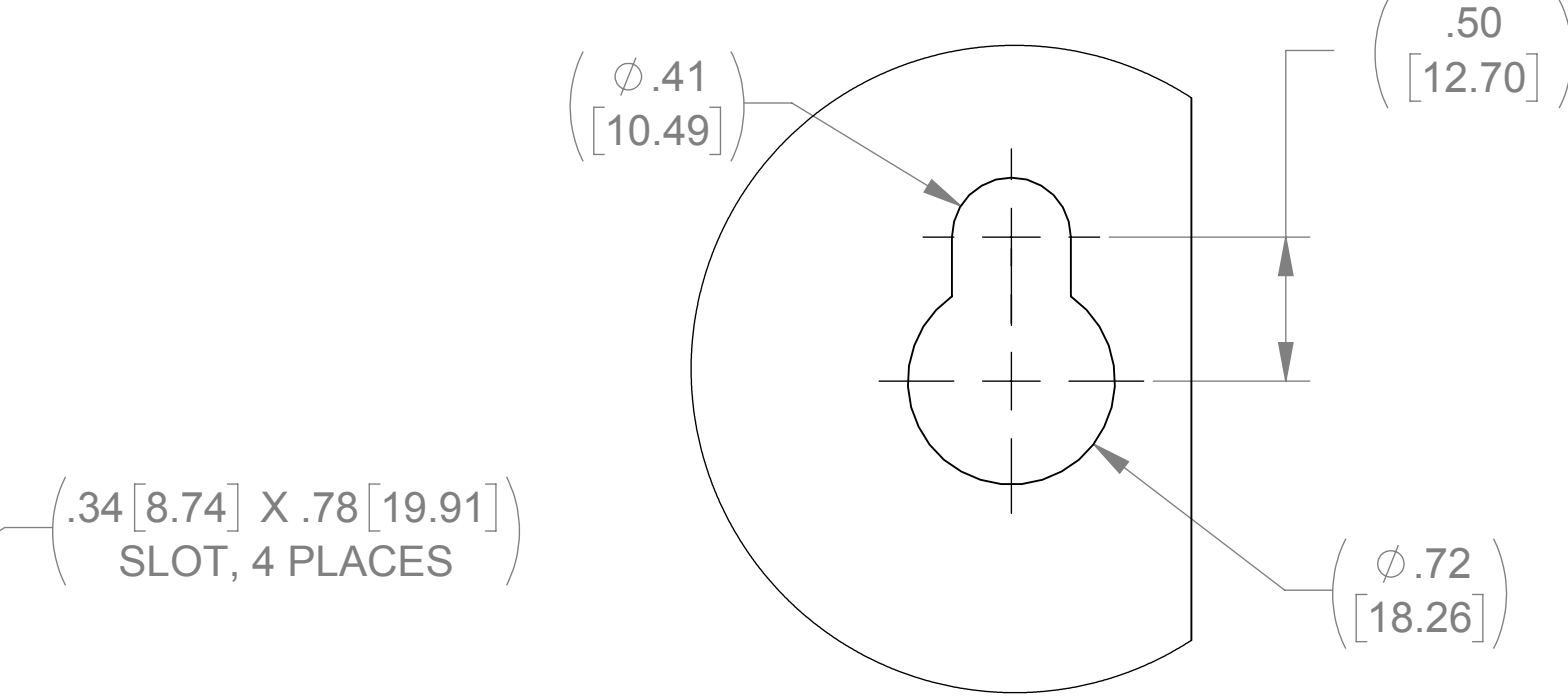
FRONT VIEW



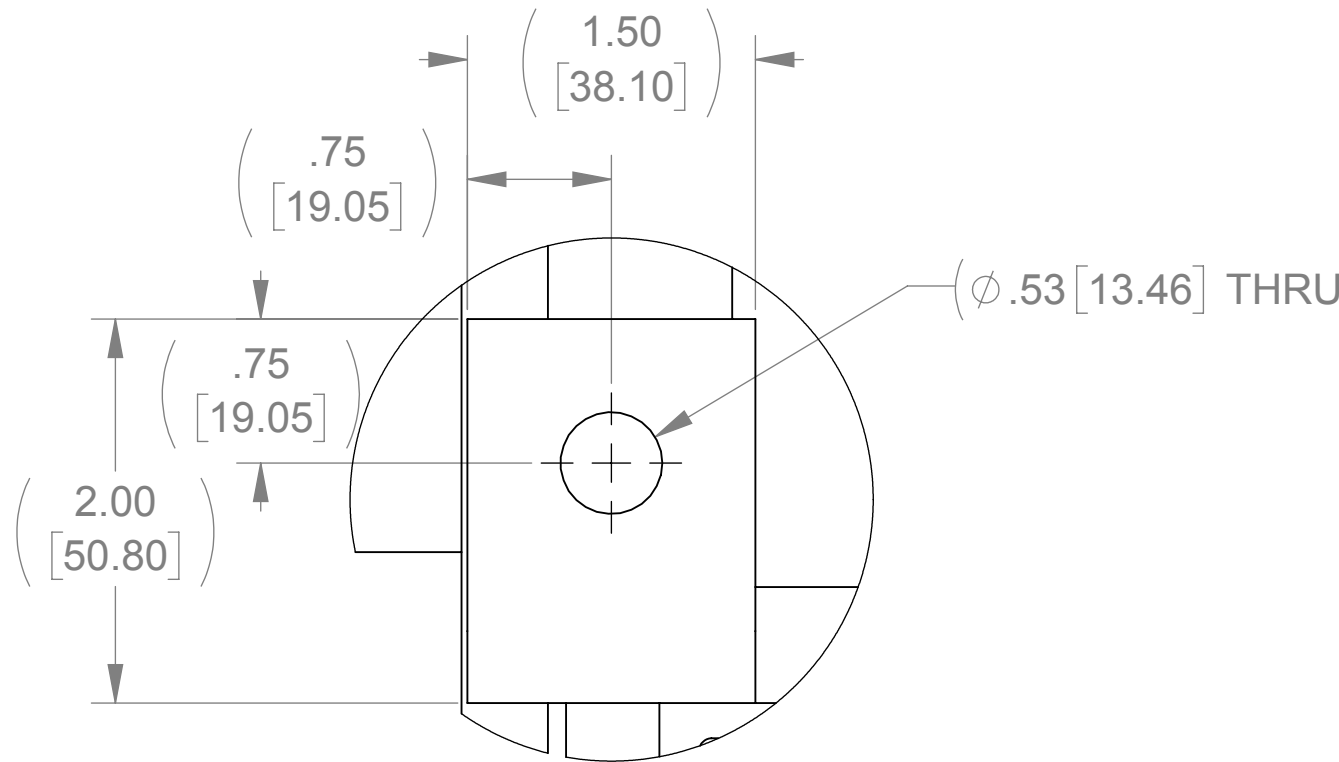
BOTTOM VIEW



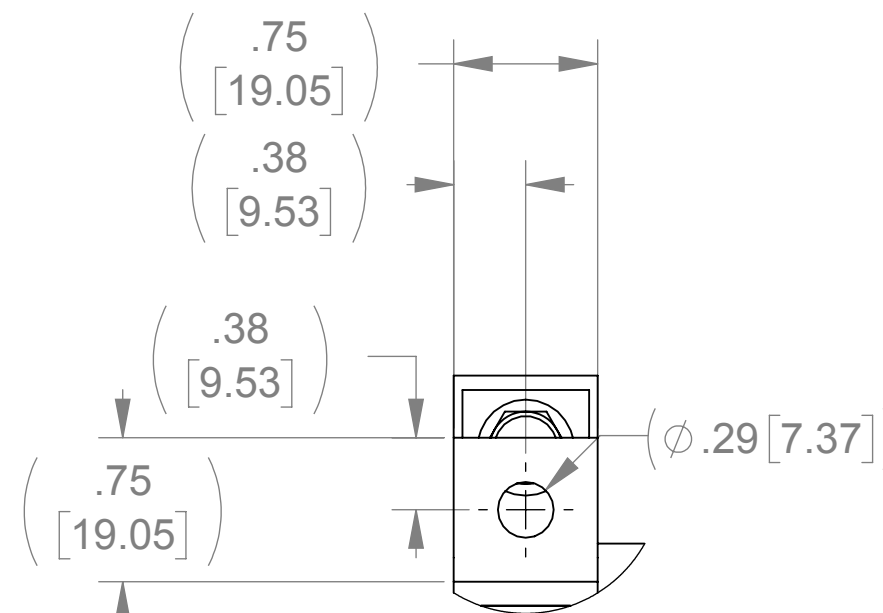
RIGHT SIDE VIEW



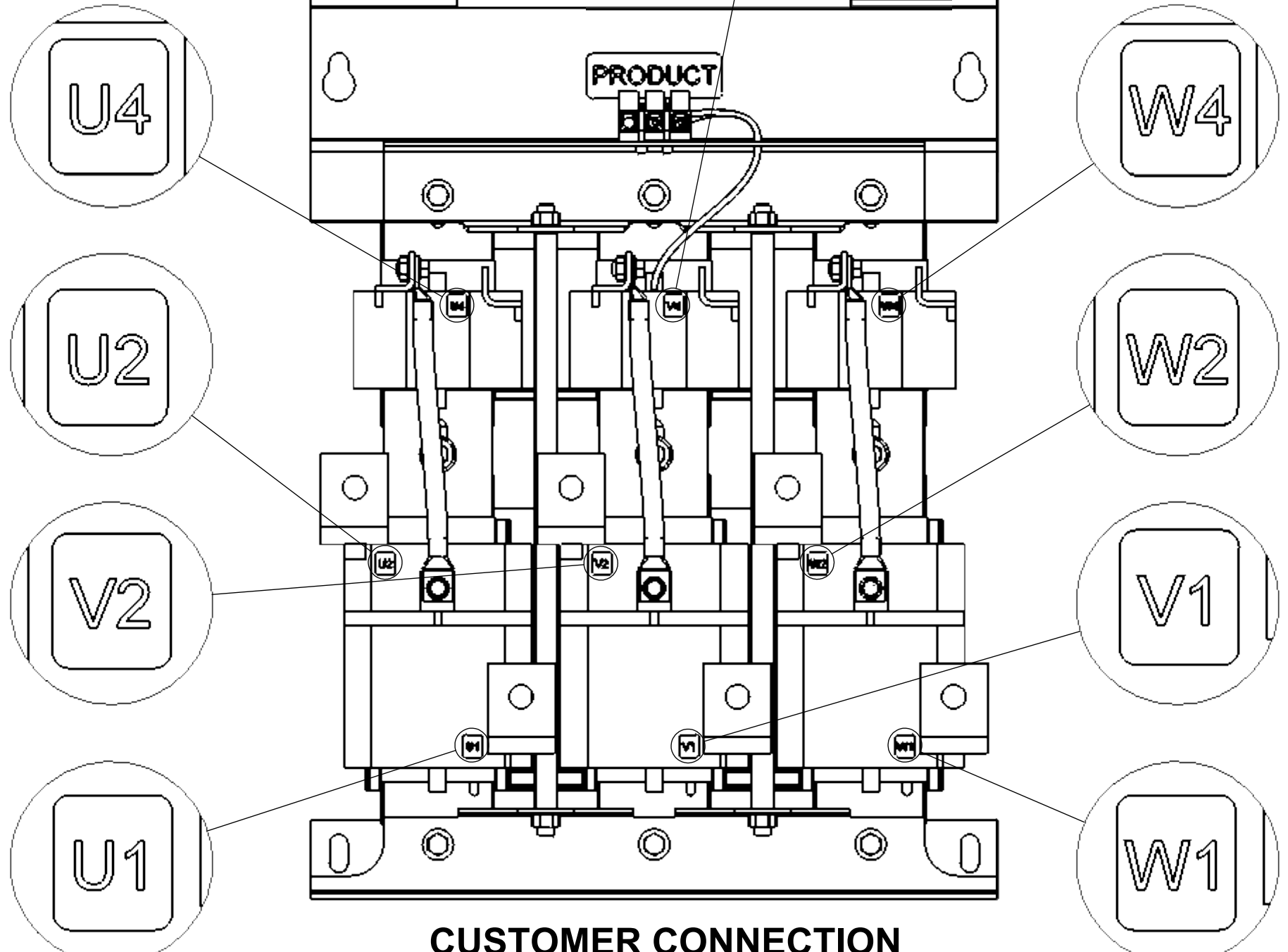
DETAIL B
(2 PLACES)



DETAIL C
(6 PLACES)



DETAIL D
(3 PLACES)



CUSTOMER CONNECTION
DETAIL VIEW

NOTES:

1. FILTER INCLUDES CAPPANEL-543C (QTY 1).
2. TERMINAL SCREW TIGHTENING TORQUE: 16 IN/LBS.
3. WIRE RANGE: 4-14 AWG.

THE COMPONENT, PART OR ASSEMBLY DESCRIBED IN THIS DOCUMENT MUST COMPLY WITH THE EU(EUROPEAN UNION) DIRECTIVE RoHS2		MATERIAL		CONFIDENTIAL AND PROPRIETARY INFORMATION THIS DOCUMENT CONTAINS CONFIDENTIAL AND PROPRIETARY INFORMATION OF MTE CORPORATION AND MAY NOT BE USED, COPIED OR DISCLOSED TO OTHERS EXCEPT WITH THE AUTHORIZED WRITTEN PERMISSION OF MTE CORPORATION					
CONTAINS <0.1% OF ANY SVHC BY WEIGHT PER REACH REGULATION									
UNLESS OTHERWISE SPECIFIED DIMENSIONS ARE IN INCHES [MM] TOLERANCES ARE: ANGLES: ± 1 ° 1 PLACE .X: ± .1 [2.5] 2 PLACE .XX: ± .03 [0.76] 3 PLACE .XXX: ± .010 [0.254]		<div>MTE</div> <div>AN BL POWER ELECTRONICS COMPANY</div> <div>N83 W13330 Leon Road Menomonee Falls, WI 53051 USA 800.455.4683 262.253.8200</div>		DESCRIPTION MATRIX AP 320A 480V 60HZ OPEN PANEL					
DRAWN		DATE		SIZE D		DWG No CD MAPP0320D		REV 03	
SG		05/17/11							
CHECKED		DATE		SCALE 1:3					
JM		03/21/16							
APPROVED		DATE		SHEET 1 OF 1					
JM		03/21/16							