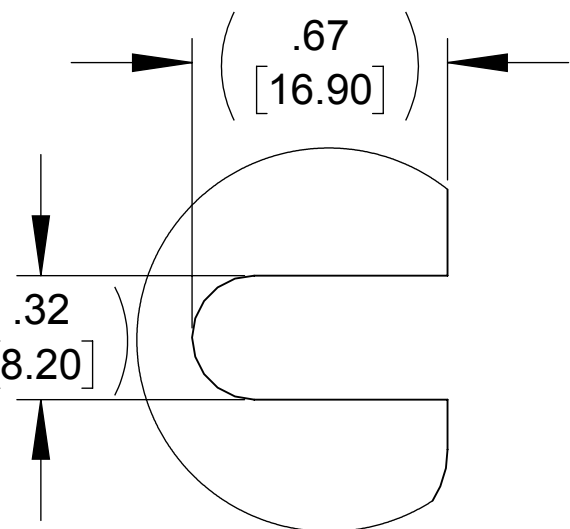
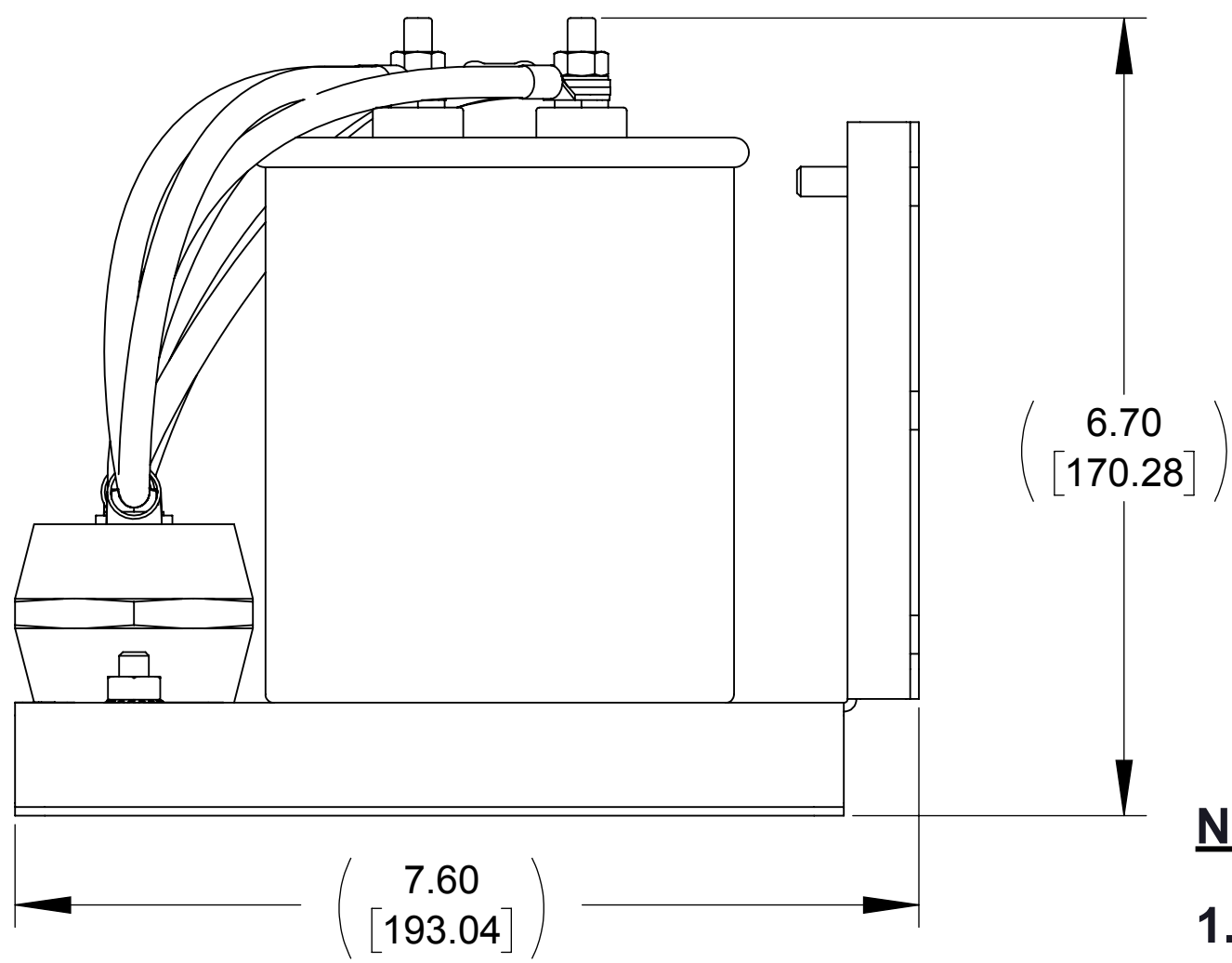
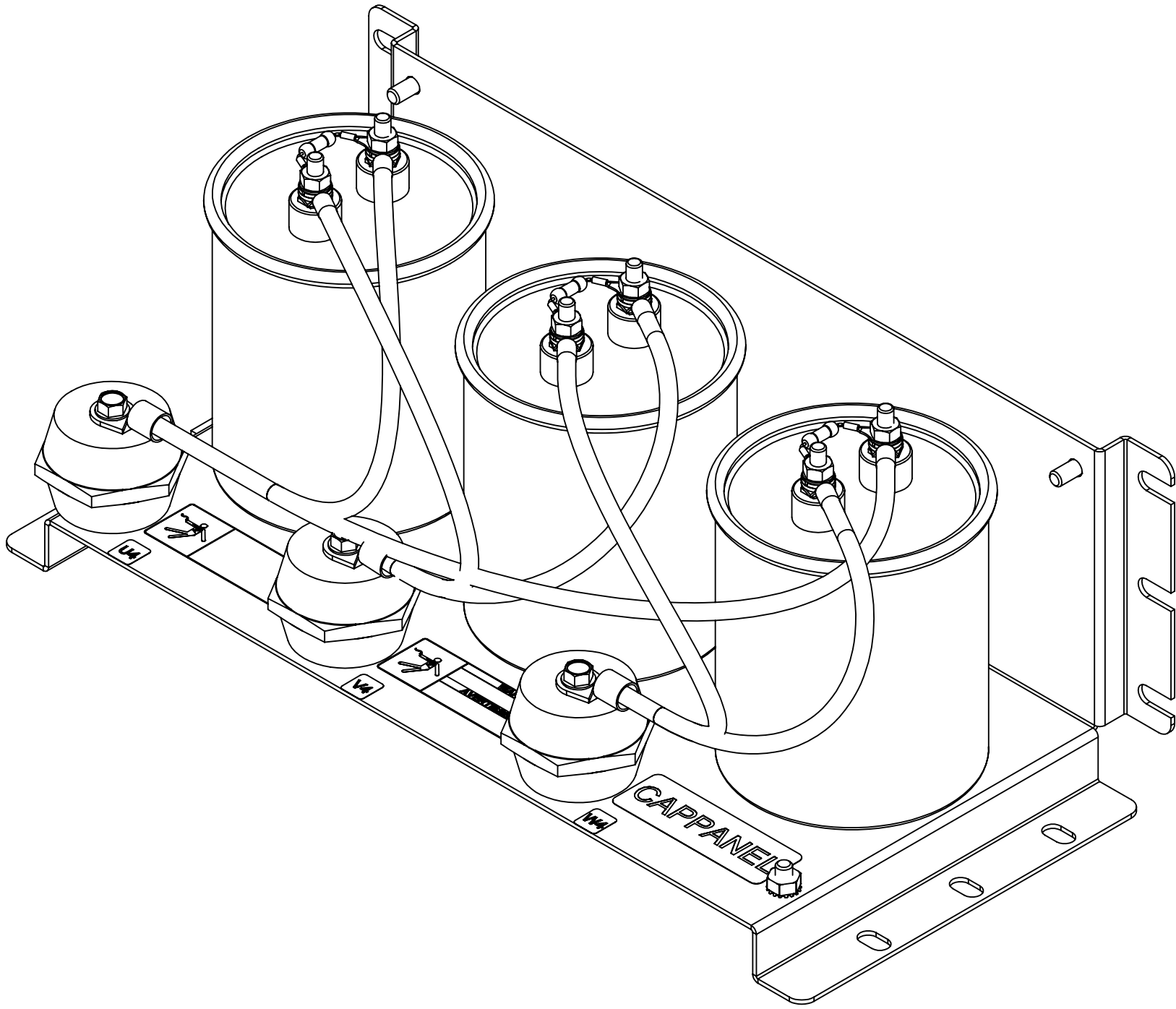
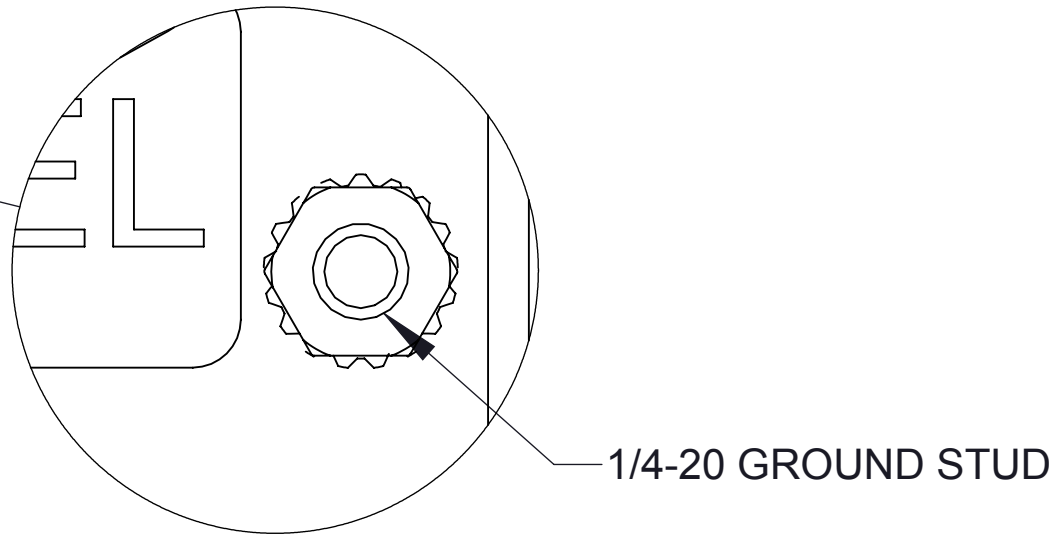



ECO No	DESCRIPTION	REV BY	DATE
M9725	UPDATED TO NEW DRAWING STANDARD AND REMOVED GRND LABEL	KV	11/12/15



DETAIL A
(6 PLACES)



NOTE:
1. TIGHTEN STANDOFF SCREWS TO 58 IN/LBS. TORQUE, MAX.

THE COMPONENT, PART OR ASSEMBLY DESCRIBED IN THIS DOCUMENT MUST COMPLY WITH THE EU(EUROPEAN UNION) DIRECTIVE RoHS2		MATERIAL		CONFIDENTIAL AND PROPRIETARY INFORMATION THIS DOCUMENT CONTAINS CONFIDENTIAL AND PROPRIETARY INFORMATION OF MTE CORPORATION AND MAY NOT BE USED, COPIED OR DISCLOSED TO OTHERS EXCEPT WITH THE AUTHORIZED WRITTEN PERMISSION OF MTE CORPORATION			
CONTAINS <0.1% OF ANY SVHC BY WEIGHT PER REACH REGULATION				DESCRIPTION			
UNLESS OTHERWISE SPECIFIED DIMENSIONS ARE IN INCHES [MM] TOLERANCES ARE: ANGLES: ± 1 ° 1 PLACE .X: ± .1 [2.5] 2 PLACE .XX: ± .01 [0.25] 3 PLACE .XXX: ± .005 [0.127]		 N83 W13330 Leon Road Menomonee Falls, WI 53051 USA 800.455.4683 262.253.8200		DRAWN		DATE	
				MN		08/03/15	
				CHECKED		DATE	
				JM		11/13/15	
				APPROVED		DATE	
				JM		11/13/15	
				SIZE		DWG No.	
				D		CD CAPPANEL-557C	
				SCALE 2:3		REV 01	
						SHEET 1 OF 1	