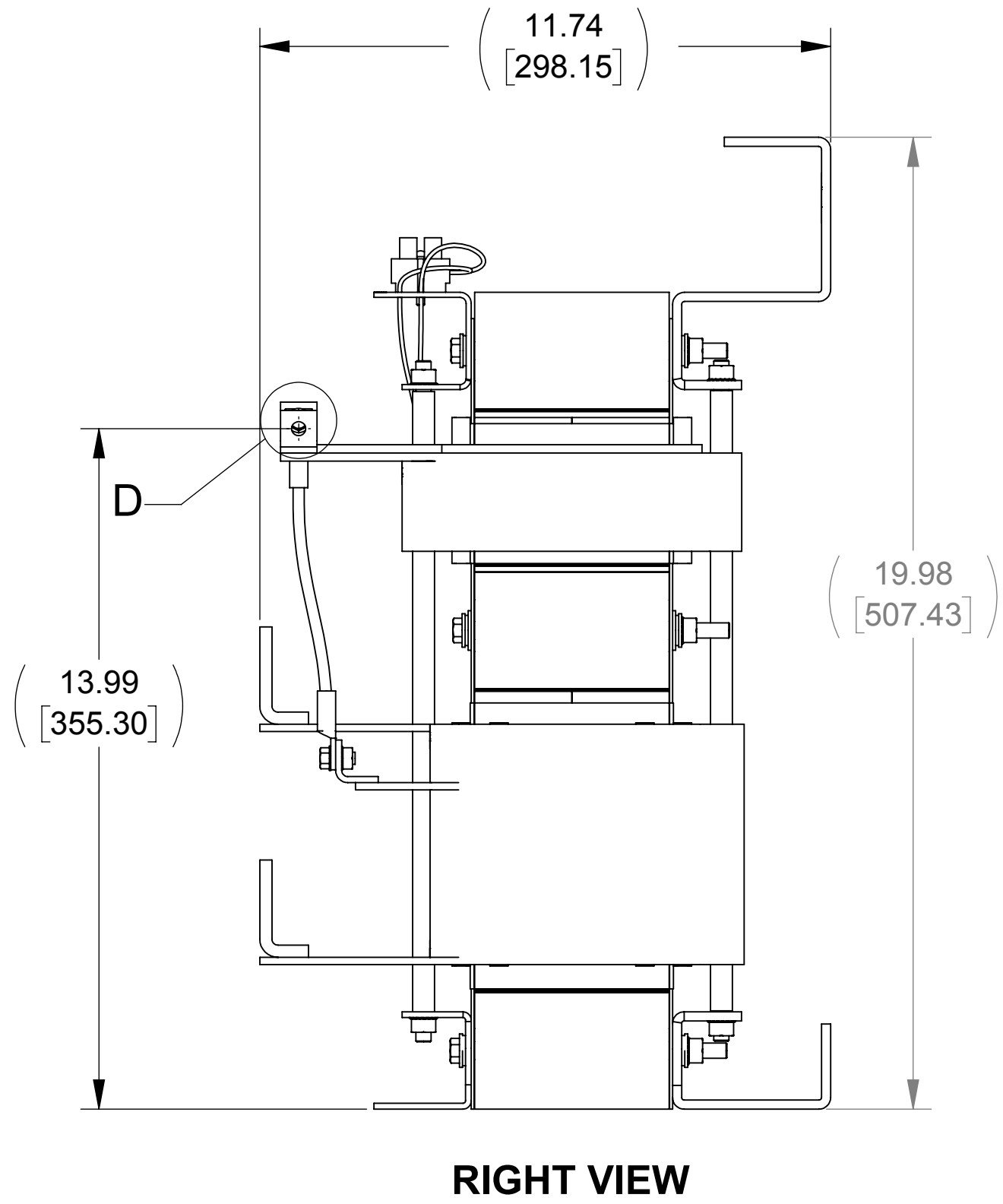
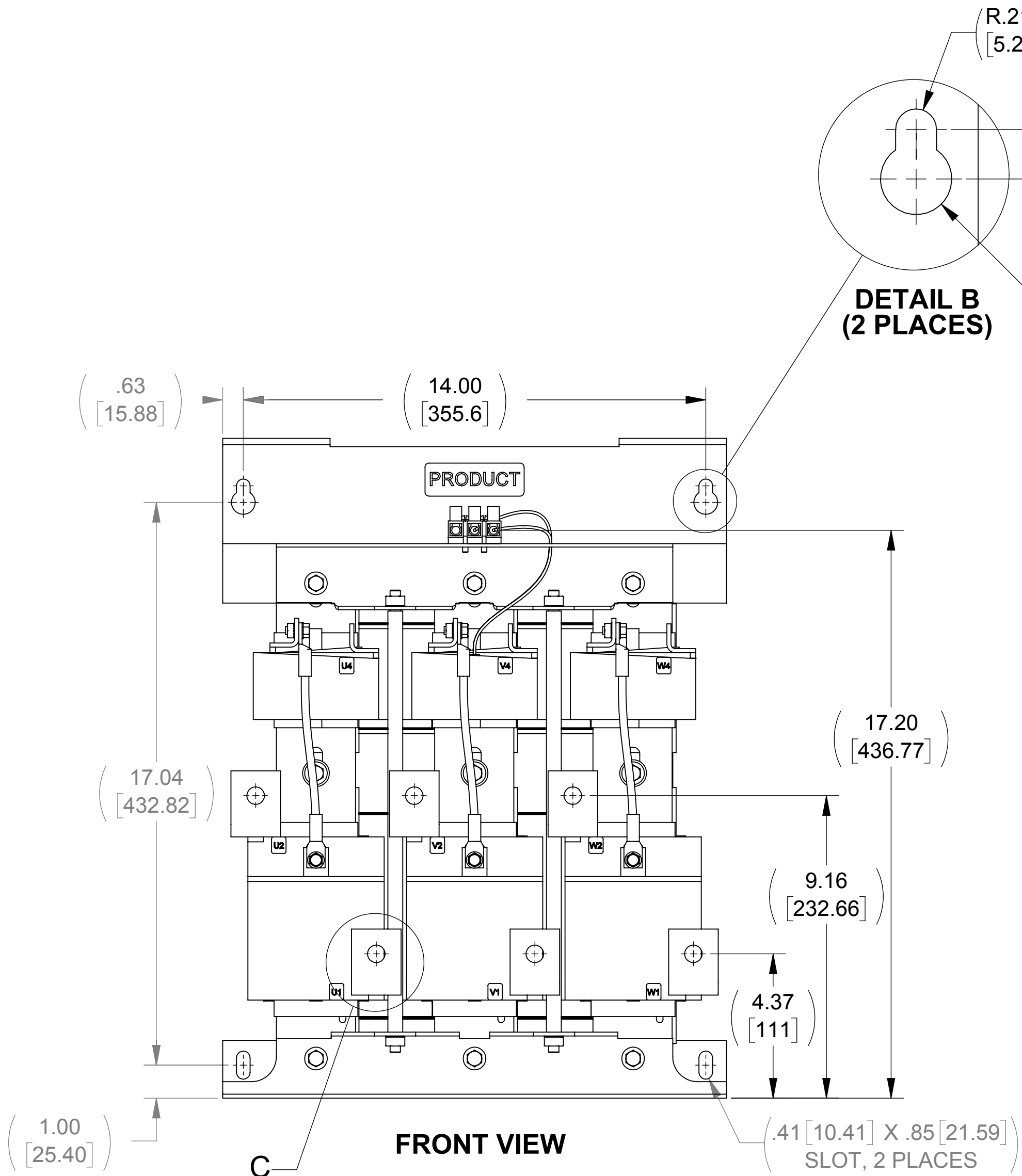
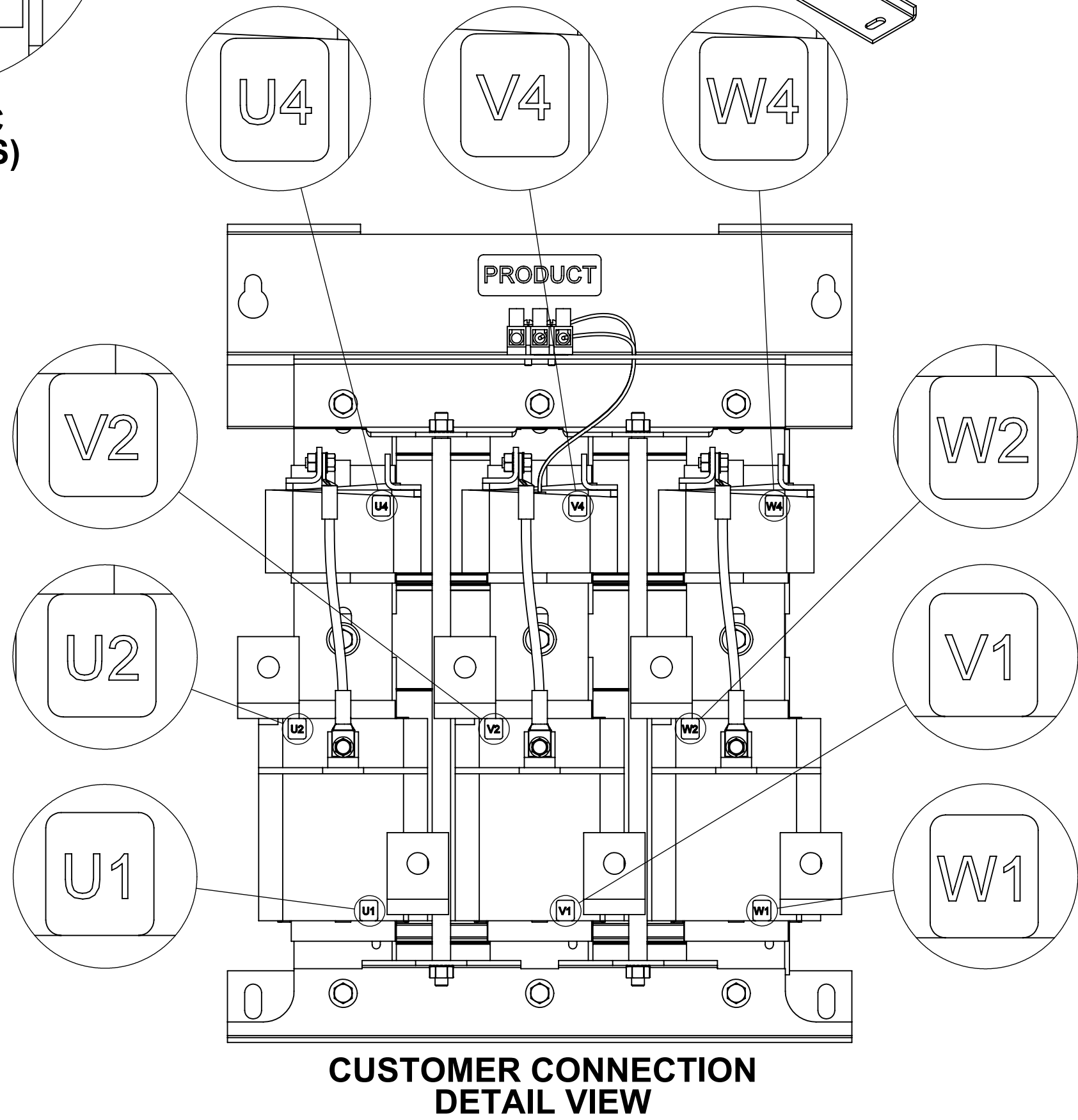
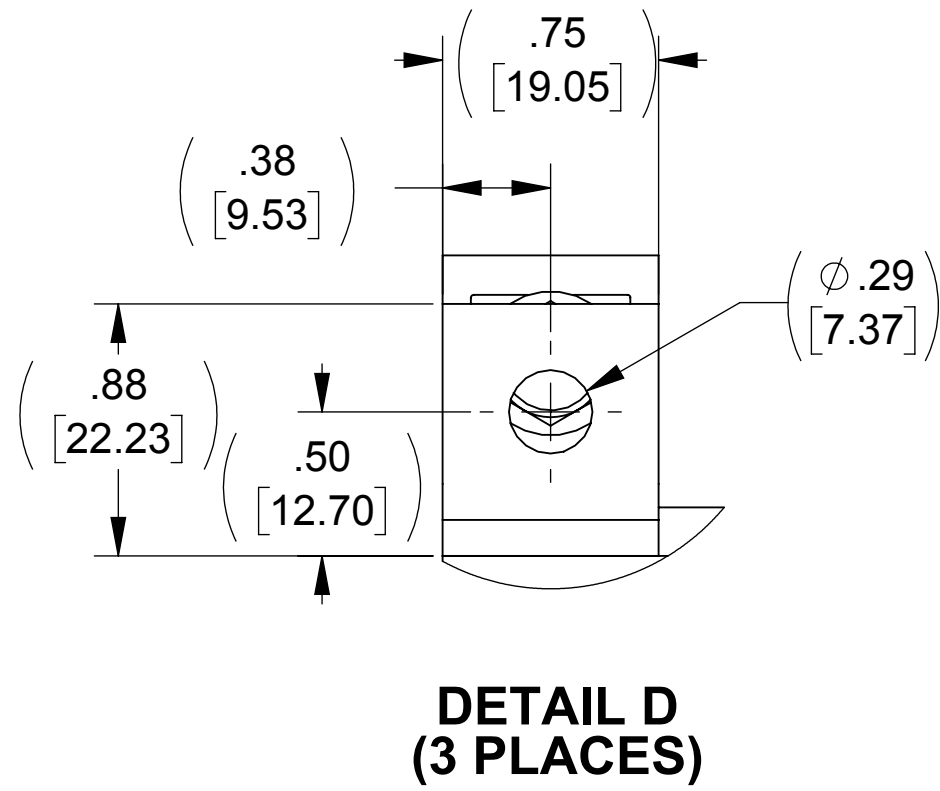
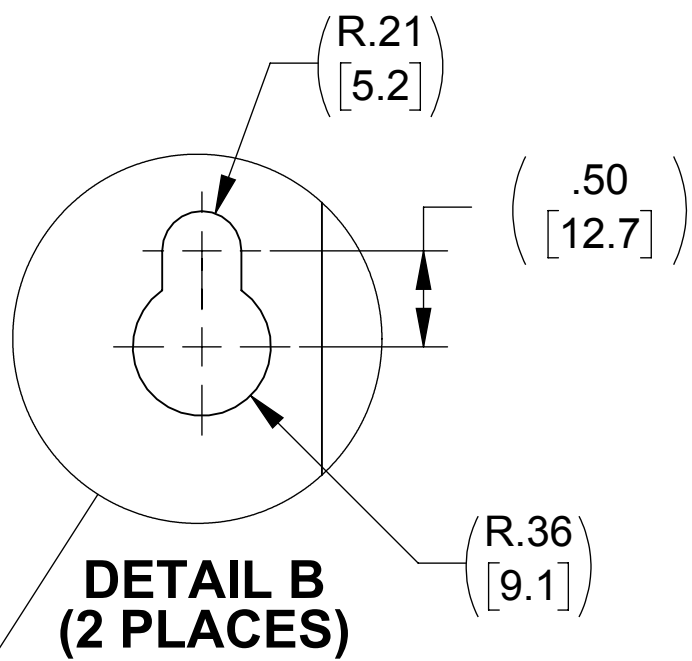
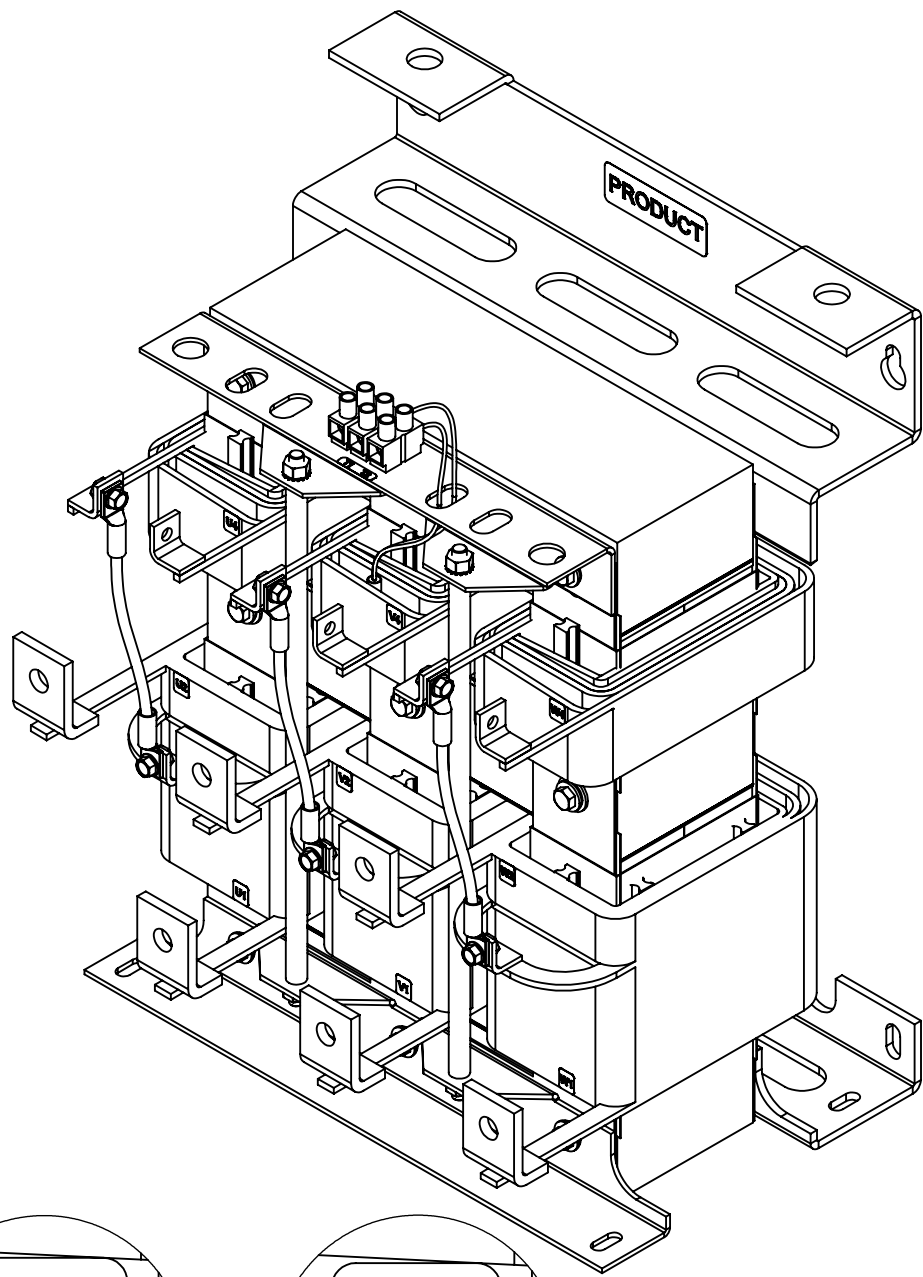
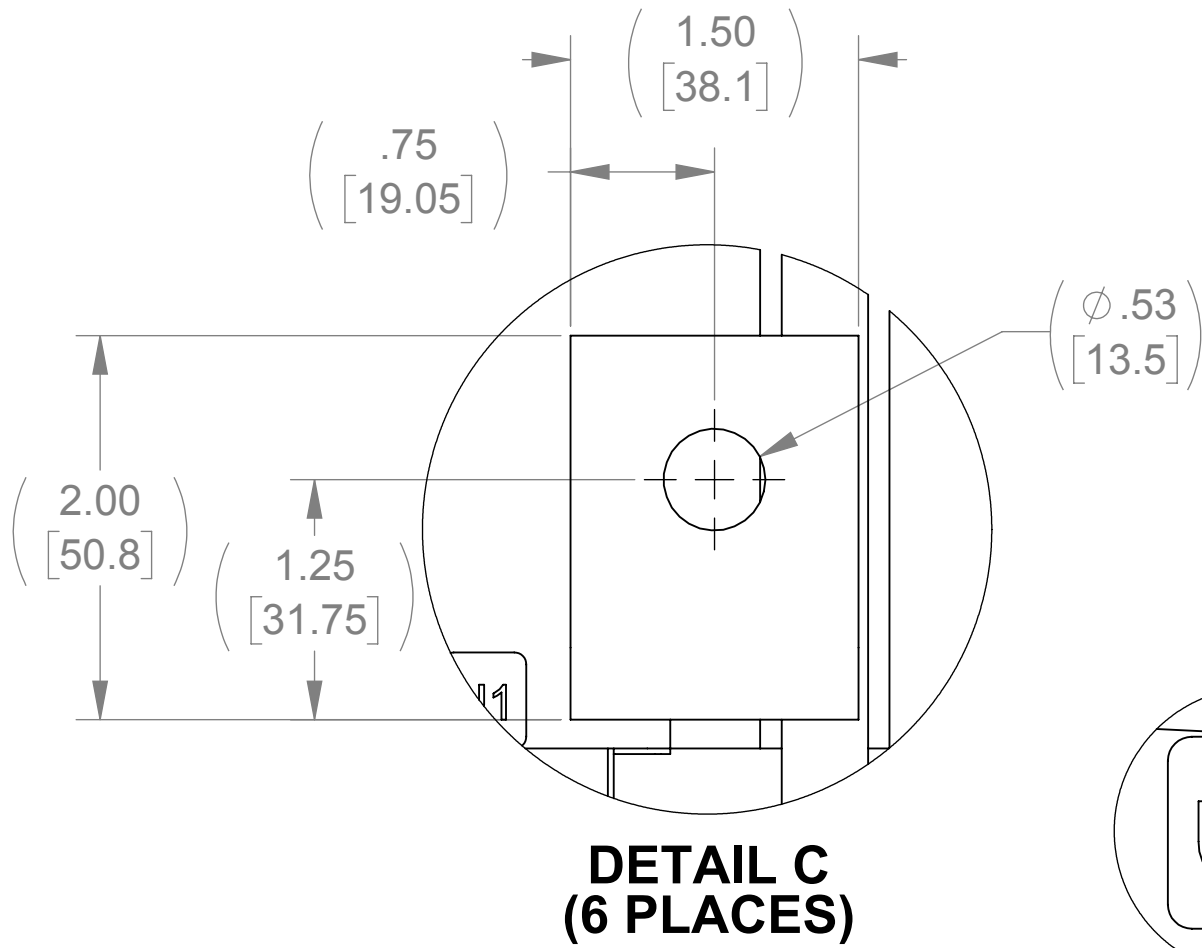
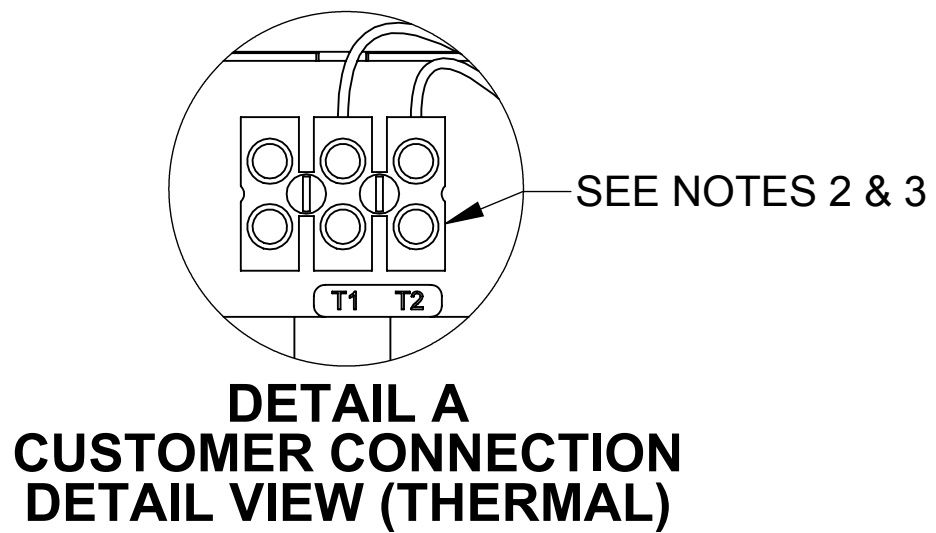
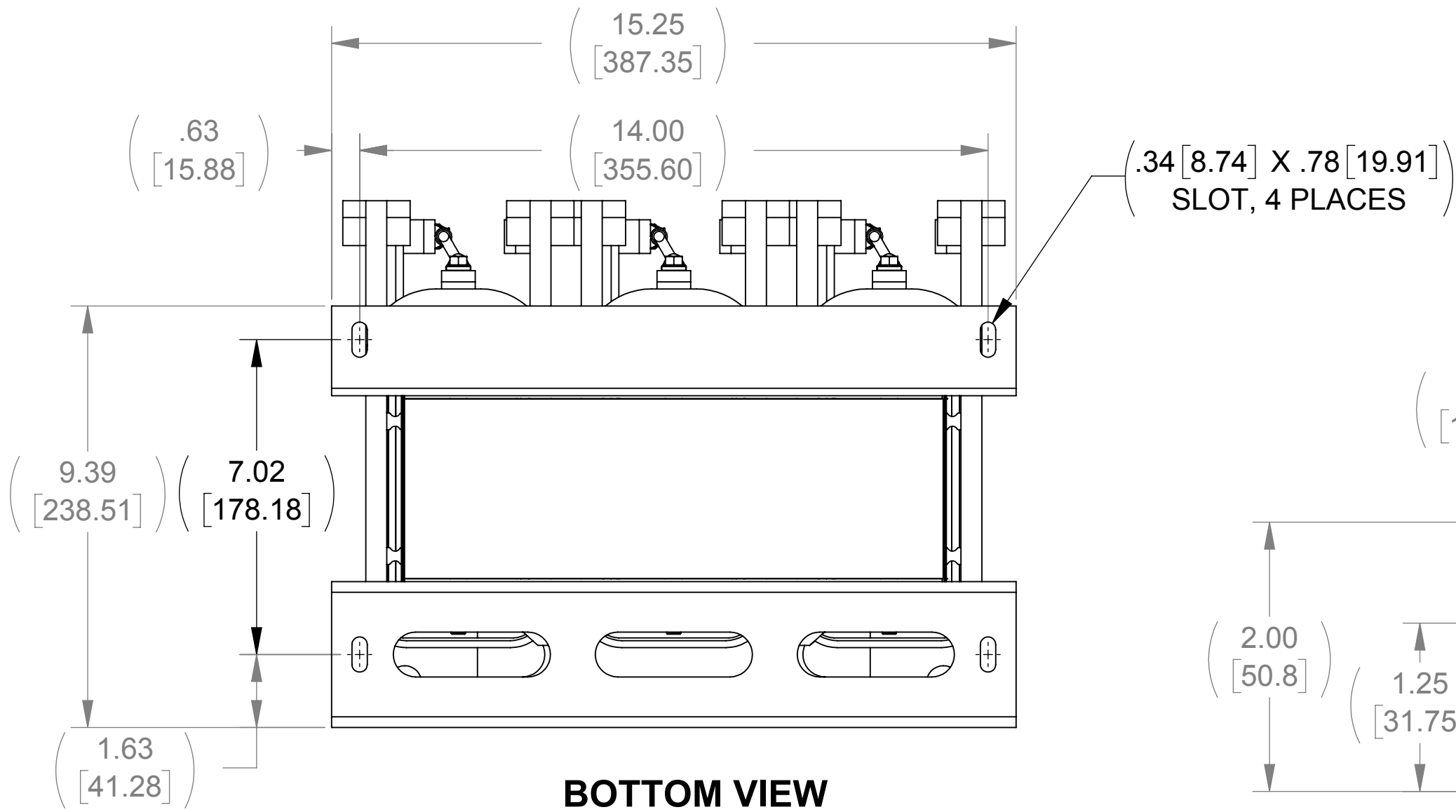
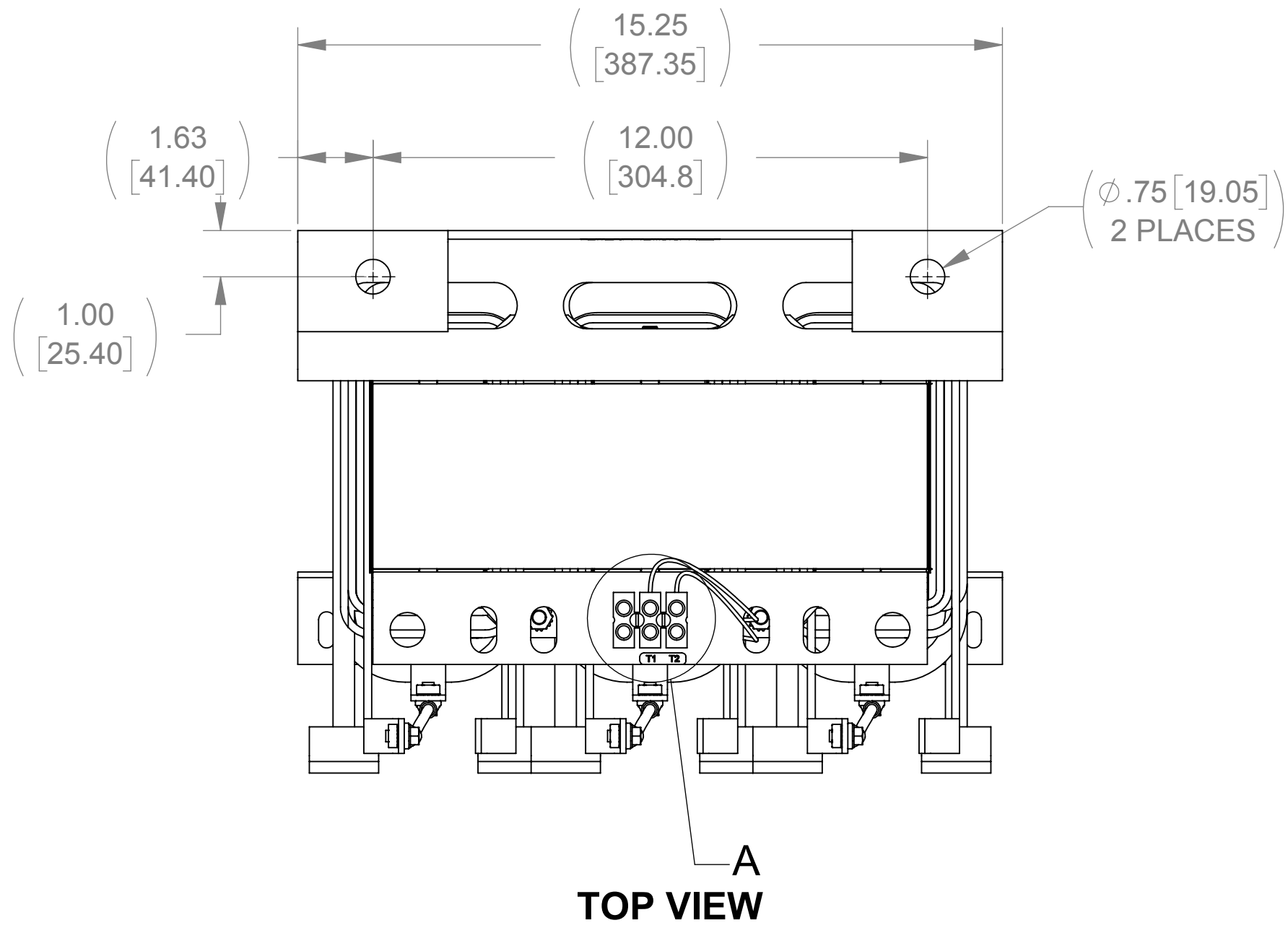


APPROX. WEIGHT
(LBS)
269

ECO No	DESCRIPTION	REV BY	DATE
M9806	CHANGED CAPPANEL-568 TO 568C	MN	05/26/16



NOTES:

1. FILTER INCLUDES CAPPANEL-568C (QTY. 1).
2. TERMINAL SCREW TIGHTENING TORQUE: 16 IN/LBS, MAX.
3. WIRE RANGE: 4-14 AWG.

THE COMPONENT, PART OR ASSEMBLY DESCRIBED IN THIS DOCUMENT MUST COMPLY WITH THE EU (EUROPEAN UNION) DIRECTIVE RoHS		MATERIAL		CONFIDENTIAL AND PROPRIETARY INFORMATION THIS DOCUMENT CONTAINS CONFIDENTIAL AND PROPRIETARY INFORMATION OF MTE CORPORATION AND MAY NOT BE USED, COPIED OR DISCLOSED TO OTHERS EXCEPT WITH THE AUTHORIZED WRITTEN PERMISSION OF MTE CORPORATION		
CONTAINS <0.1% OF ANY SVHC BY WEIGHT PER REACH REGULATION				DESCRIPTION		
UNLESS OTHERWISE SPECIFIED DIMENSIONS ARE IN INCHES [MM] TOLERANCES ARE: ANGLES: $\pm 1^\circ$ 1 PLACE .XX: $\pm .1$ [2.5] 2 PLACE .XXX: $\pm .03$ [0.76] 3 PLACE .XXX: $\pm .010$ [0.254]		MTE AN BL POWER ELECTRONICS COMPANY N83 W13330 Leon Road Menomonee Falls, WI 53051 USA 800.455.4683 262.253.8200		MATRIX AP 128A 600V 60HZ OPEN PANEL		
		DRAWN SU	DATE 05/01/13			
		CHECKED JM	DATE 06/01/16			
		APPROVED JM	DATE 06/01/16			
		SIZE D	DWG No. CD MAPP0128E	REV 04		
		SCALE 1:3			SHEET 1 OF 1	