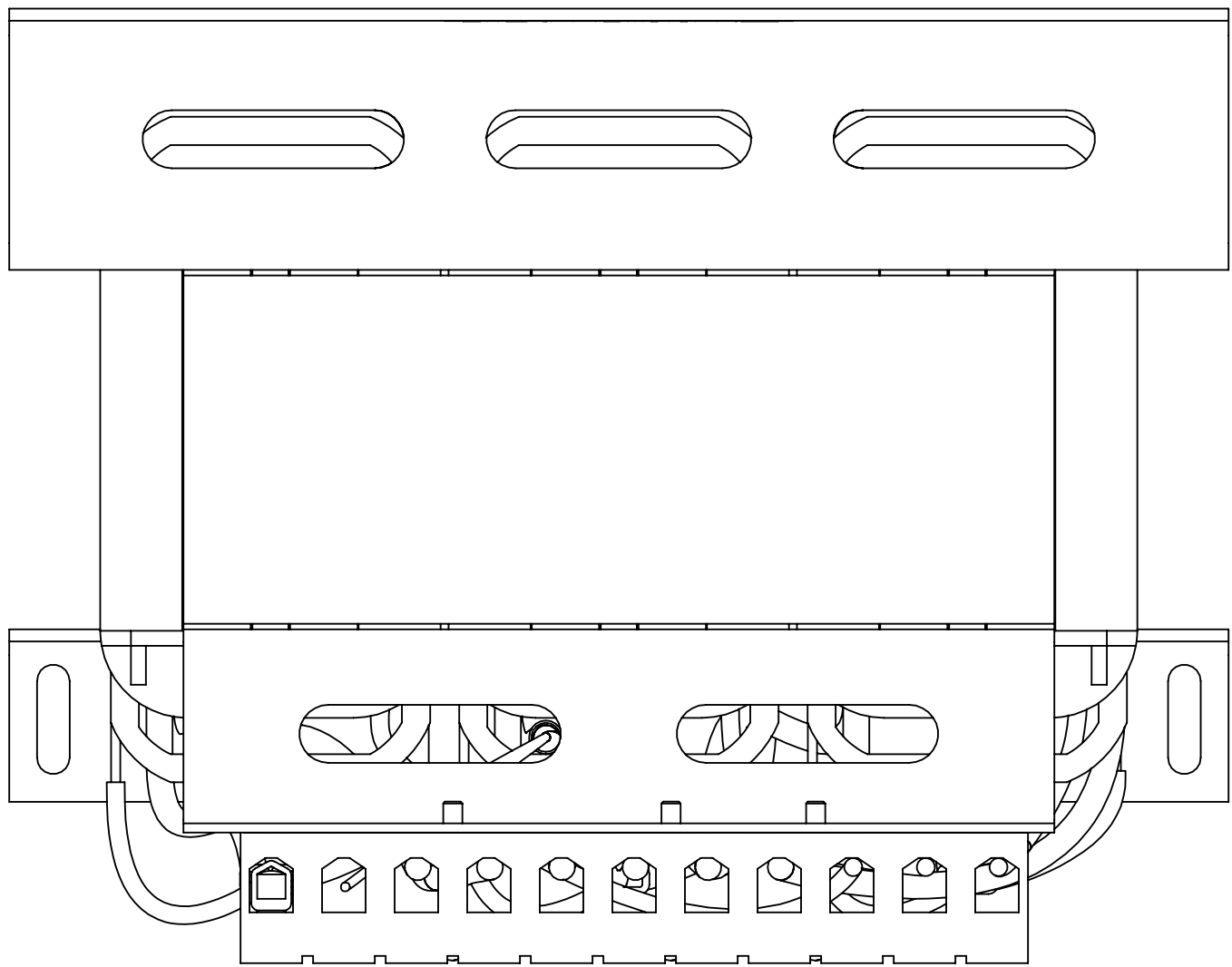
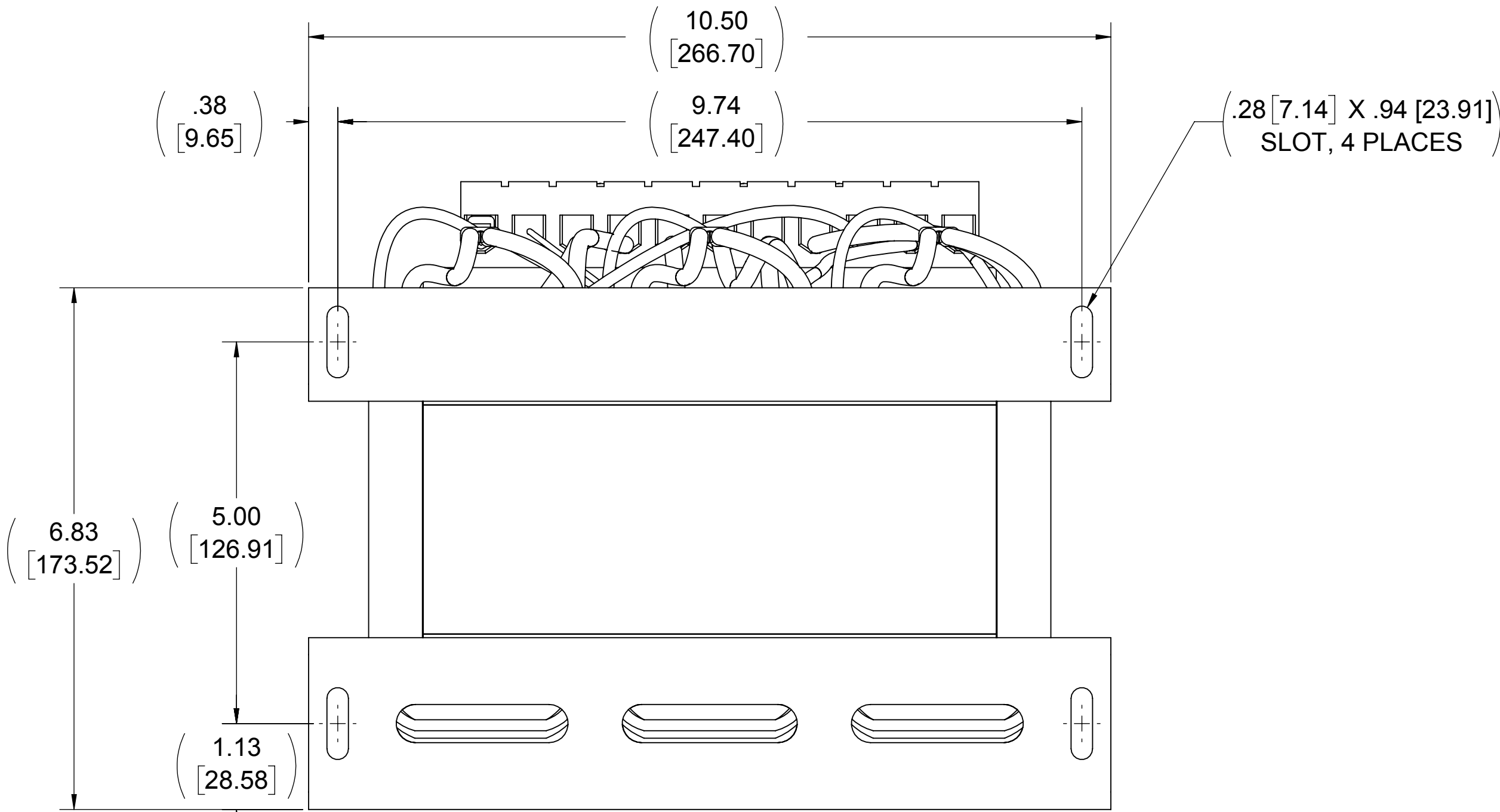


APPROX. WEIGHT
(LBS)
80

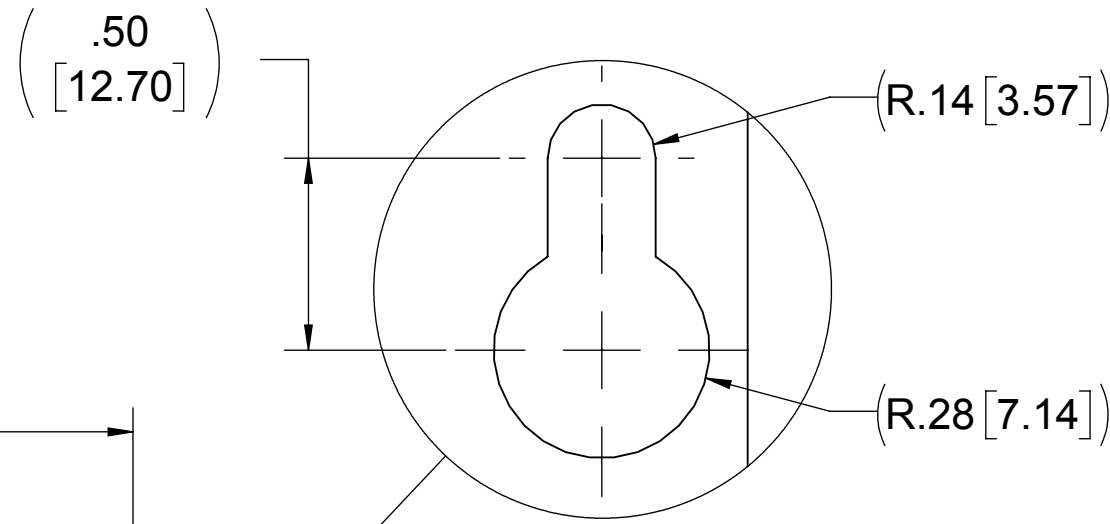
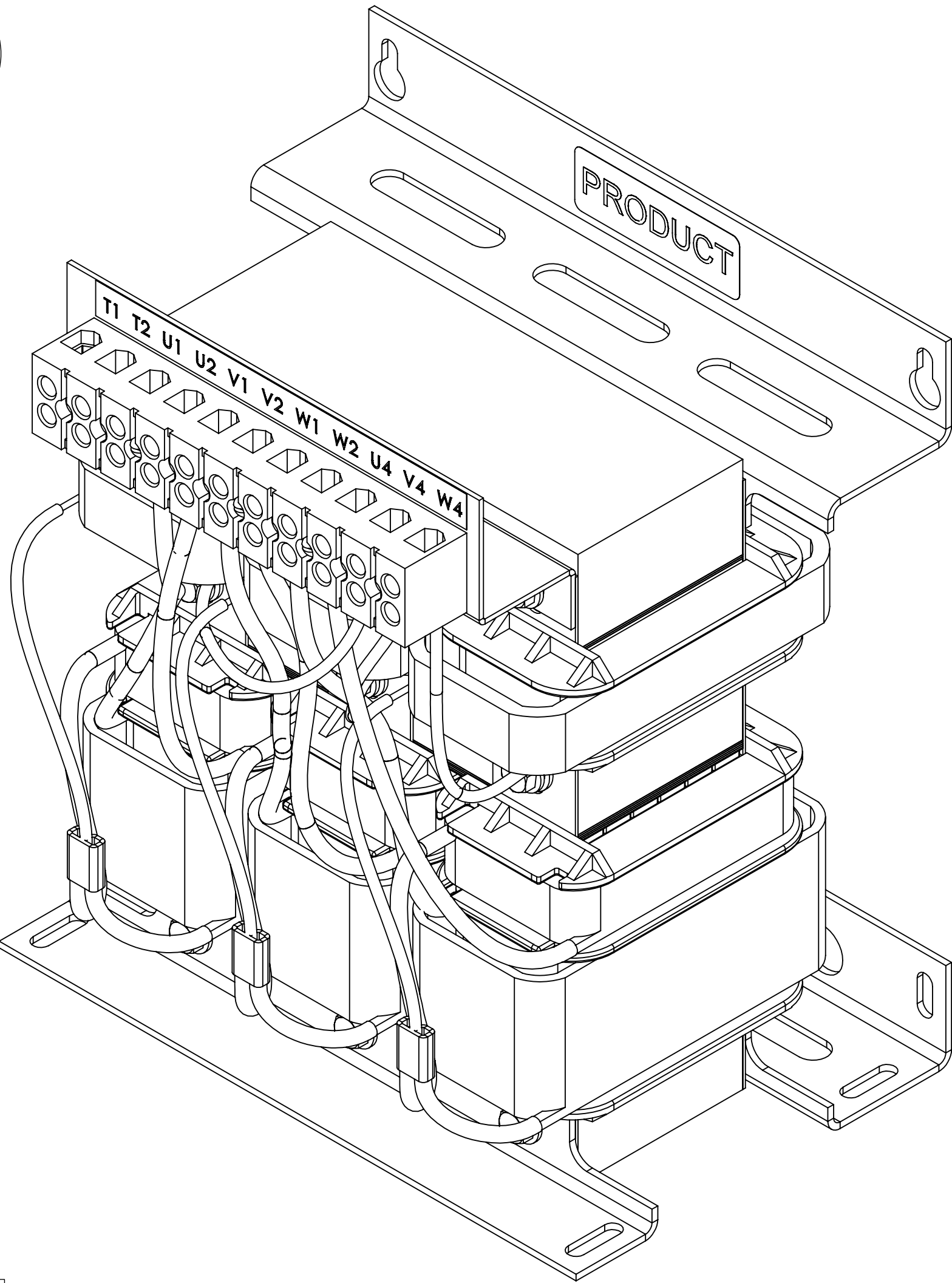
ECO No	DESCRIPTION	REV BY	DATE
M11414	ADD MISSING WEIGHT	SM	12/07/18



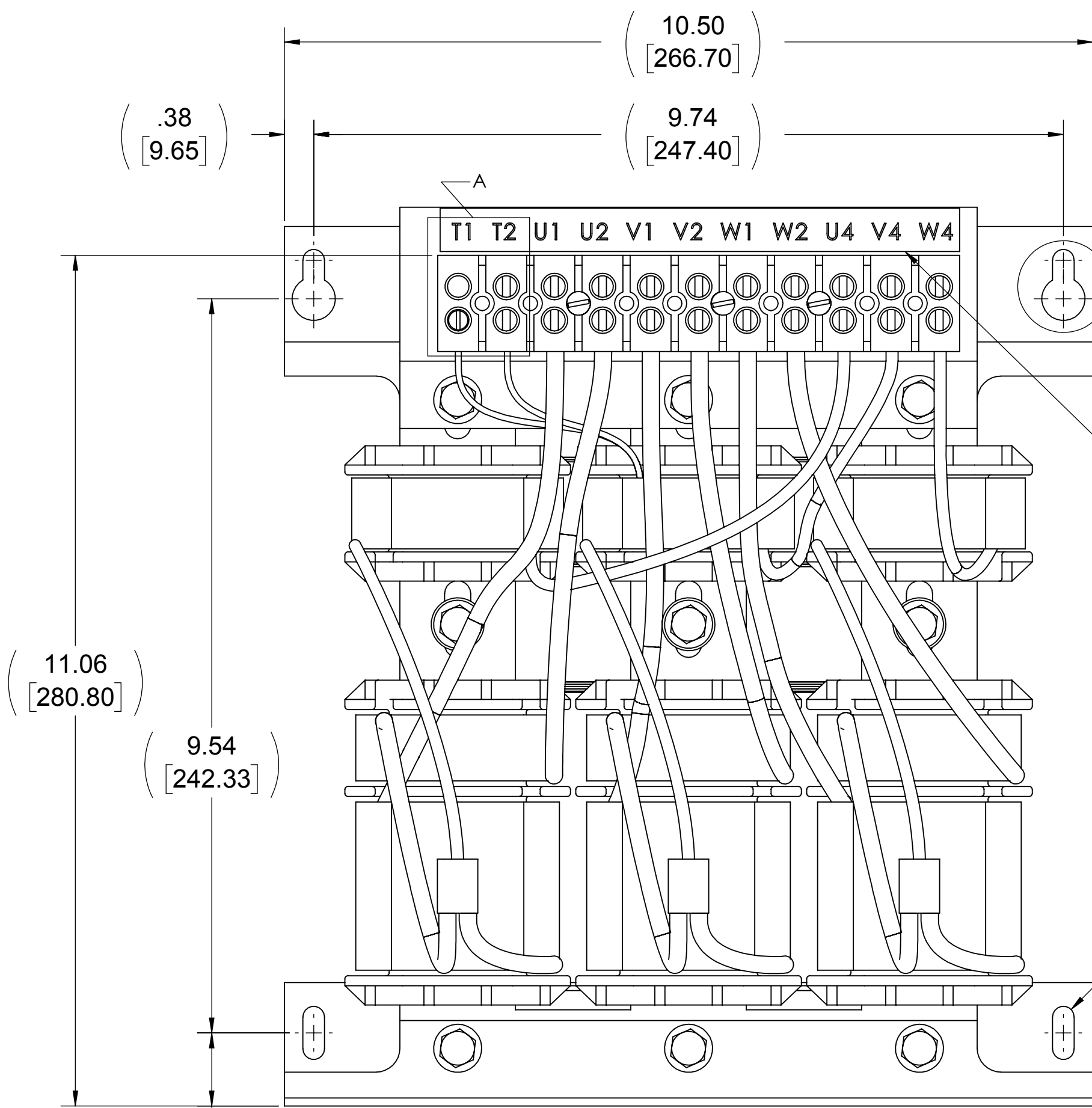
TOP VIEW



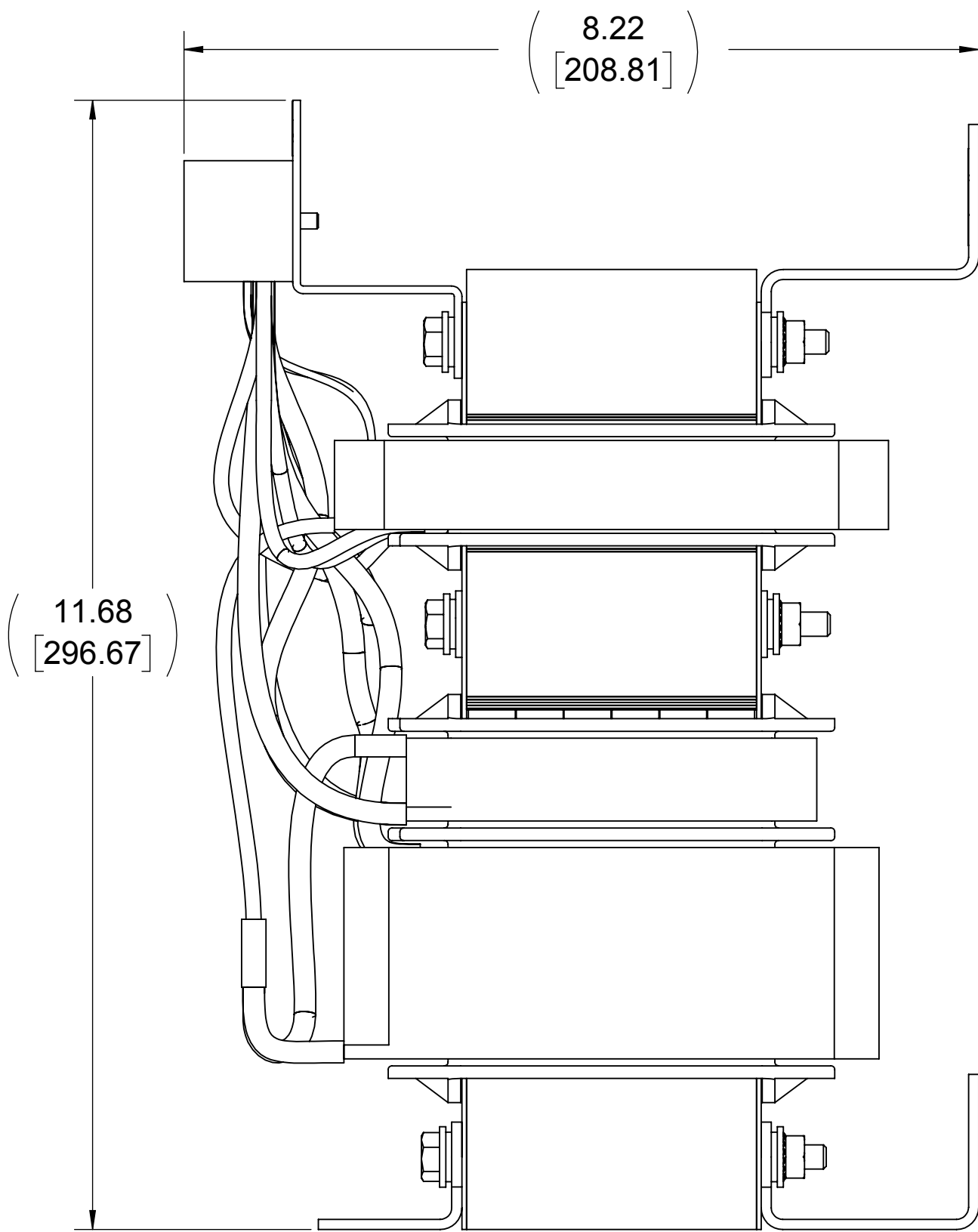
BOTTOM VIEW



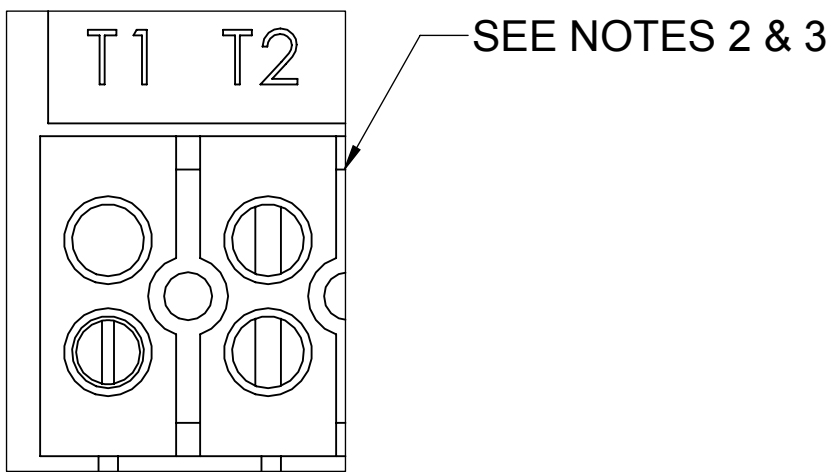
SEE NOTE 4



FRONT VIEW




RIGHT SIDE VIEW



DETAIL A
CUSTOMER CONNECTION
DETIAL VIEW (THERMAL)

NOTES:

1. FILTER REQUIRES CAPACITOR (CAP-344TP) (QTY. 1).
2. TERMINAL SCREW TIGHTENING TORQUE: 16 IN/LBS.
3. WIRE RANGE: 4-14 AWG.

THE COMPONENT, PART OR ASSEMBLY DESCRIBED IN THIS DOCUMENT MUST COMPLY WITH THE EU(EUROPEAN UNION) DIRECTIVE RoHS2		MATERIAL		CONFIDENTIAL AND PROPRIETARY INFORMATION THIS DOCUMENT CONTAINS CONFIDENTIAL AND PROPRIETARY INFORMATION OF MTE CORPORATION AND MAY NOT BE USED, COPIED OR DISCLOSED TO OTHERS EXCEPT WITH THE AUTHORIZED WRITTEN PERMISSION OF MTE CORPORATION			
CONTAINS <0.1% OF ANY SVHC BY WEIGHT PER REACH REGULATION				DESCRIPTION			
<div>UNLESS OTHERWISE SPECIFIED DIMENSIONS ARE IN INCHES [MM] TOLERANCES ARE:</div> <div>ANGLES: ± 1 °</div> <div>1 PLACE .X: ± .1 [2.5]</div> <div>2 PLACE .XX: ± .03 [0.76]</div> <div>3 PLACE .XXX: ± .010 [0.254]</div>		<div> POWER QUALITY. SOLVED.</div> <div>N83 W13330 Leon Road Menomonee Falls, WI 53051 USA 800.455-4683 262.253-8200</div>		MATRIX AP 44A 480V 60HZ OPEN PANEL			
		DRAWN	DATE	SIZE		DWG No.	REV
		JP	05/10/12	D			03
		CHECKED	DATE				
		SM	12/07/18				
		APPROVED	DATE	SCALE			
		AK	12/11/18	2:3			
				SHEET 1 OF 1			