

APPROX. WEIGHT (LBS)
1565

ECO No	DESCRIPTION	REV BY	DATE
M9783	REPLACED CAPPANEL-543 WITH 543C & 561 WITH 561C	MN	03/11/16

D

C

B

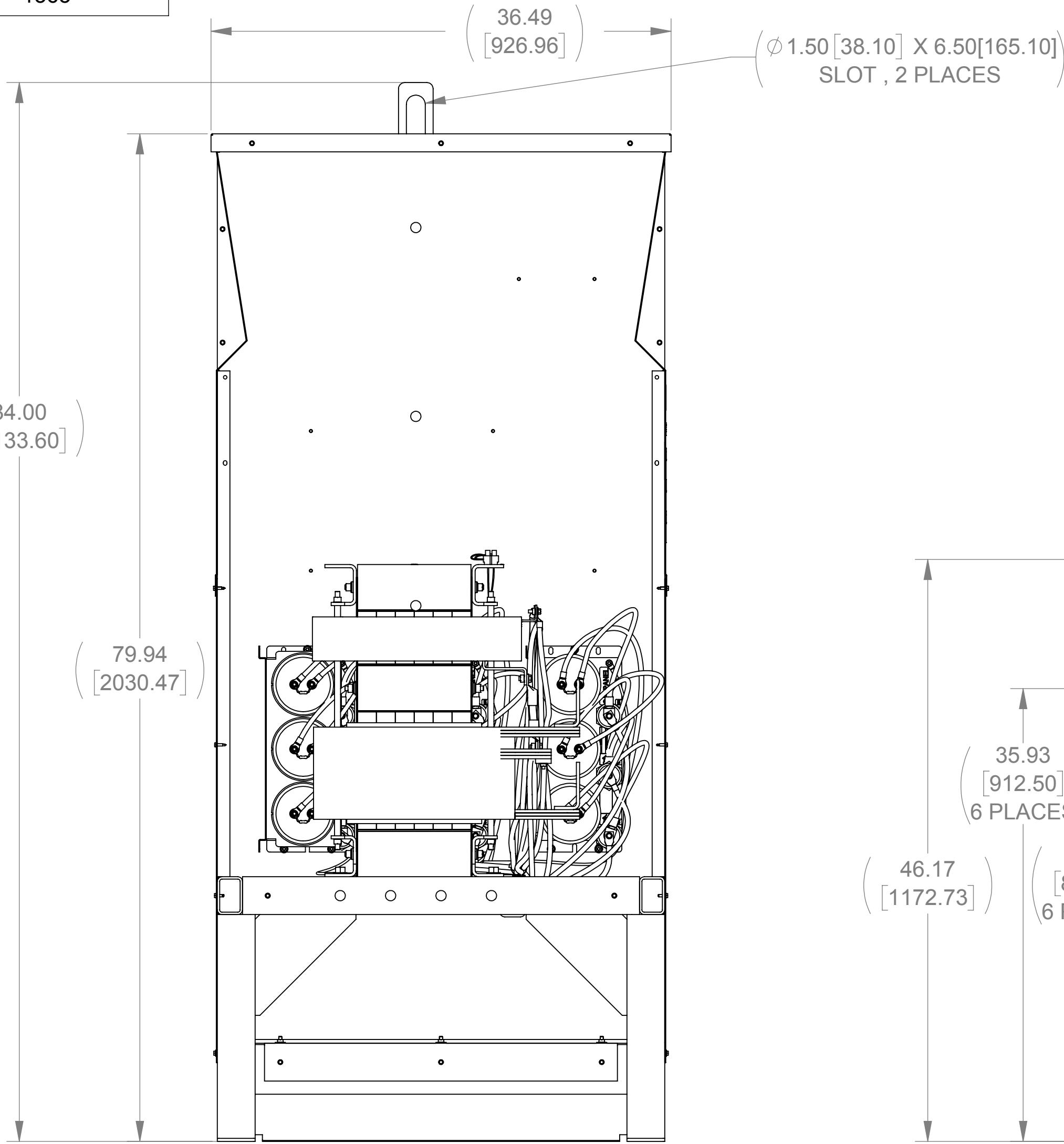
A

D

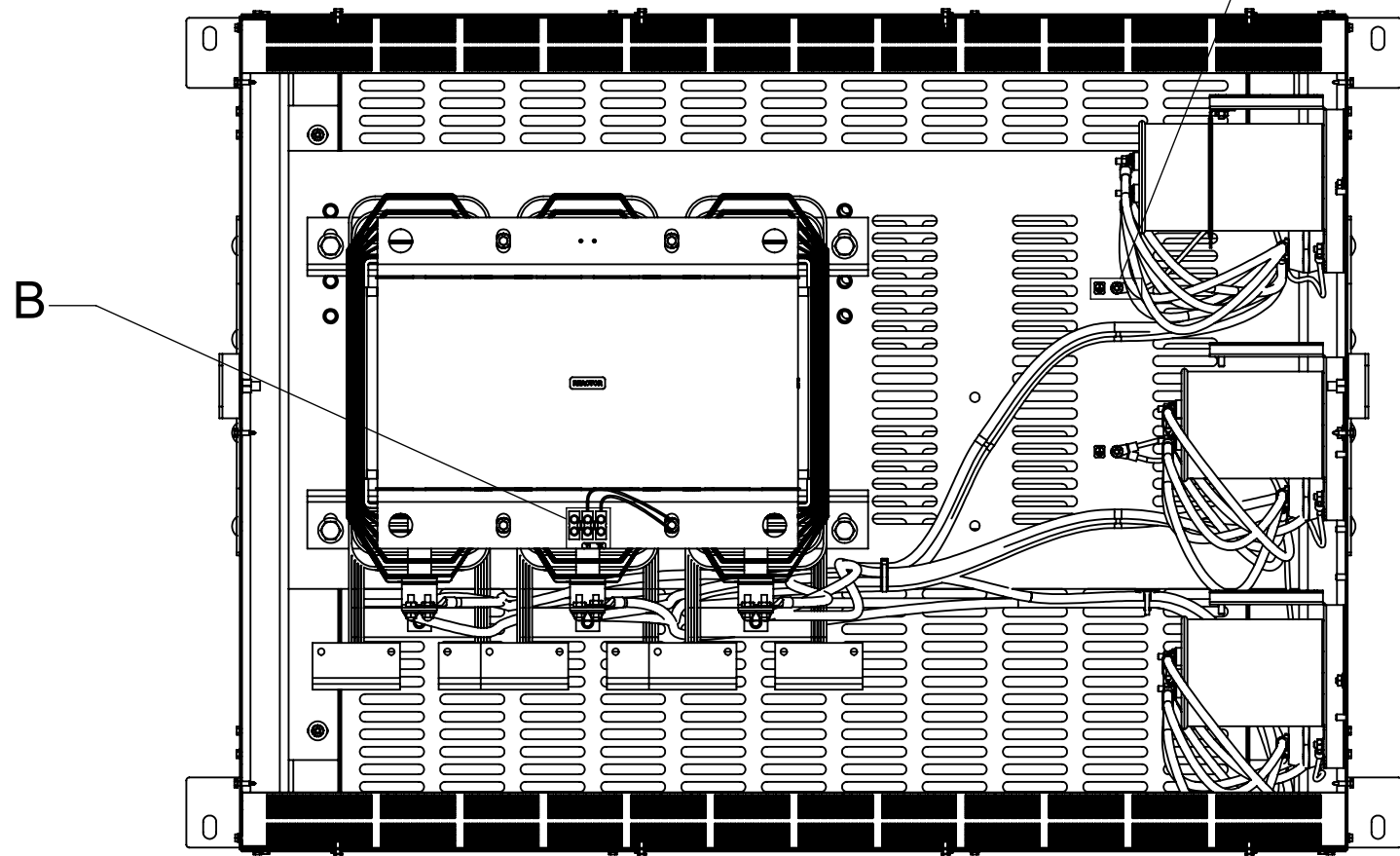
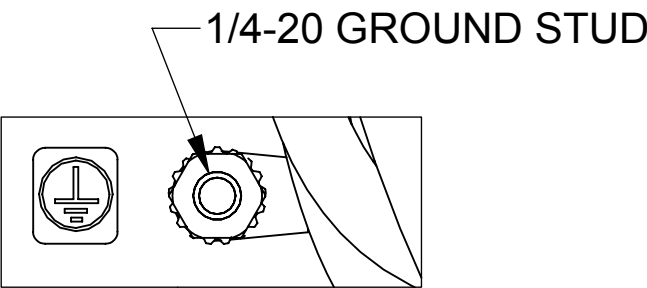
C

B

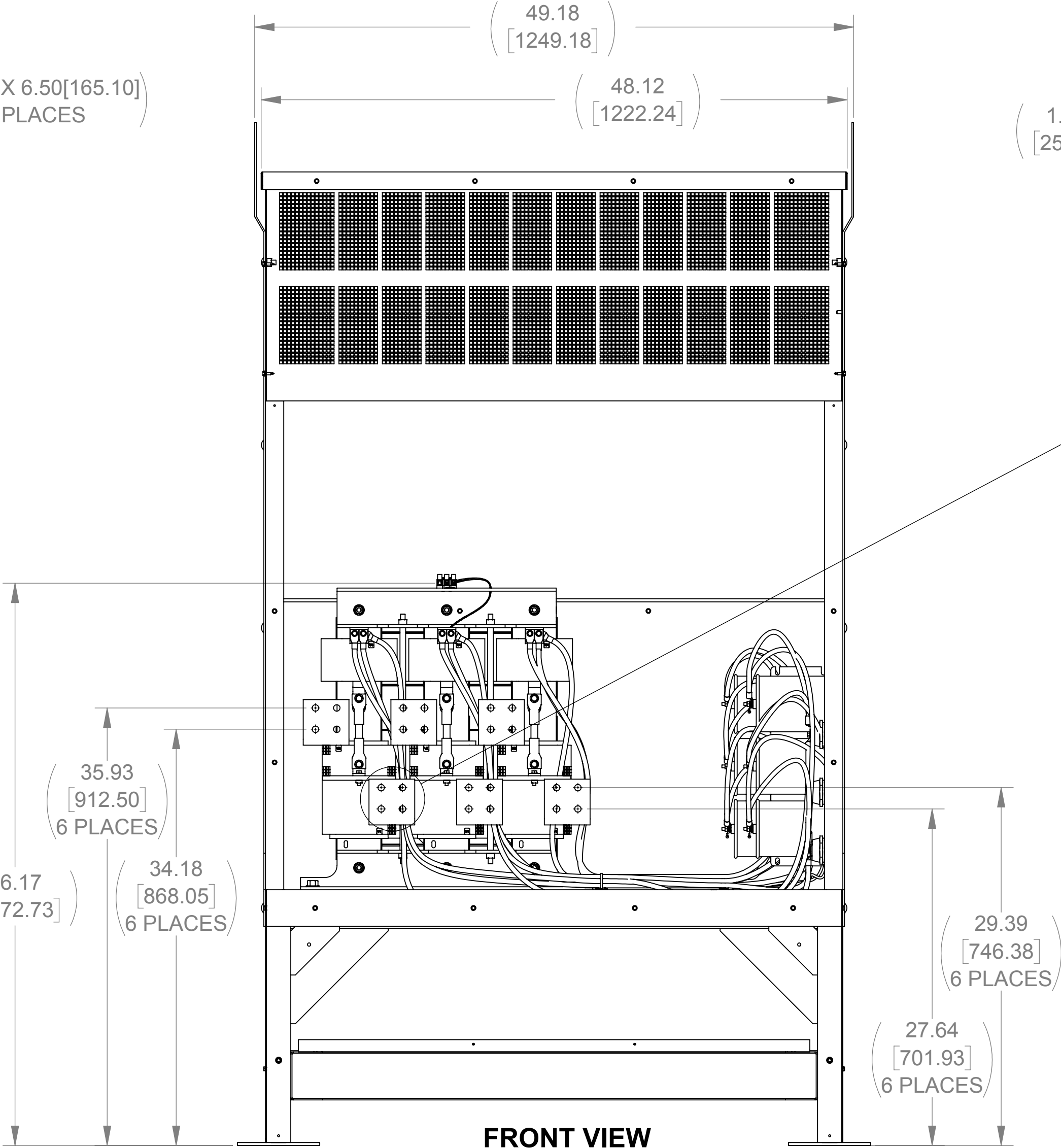
A



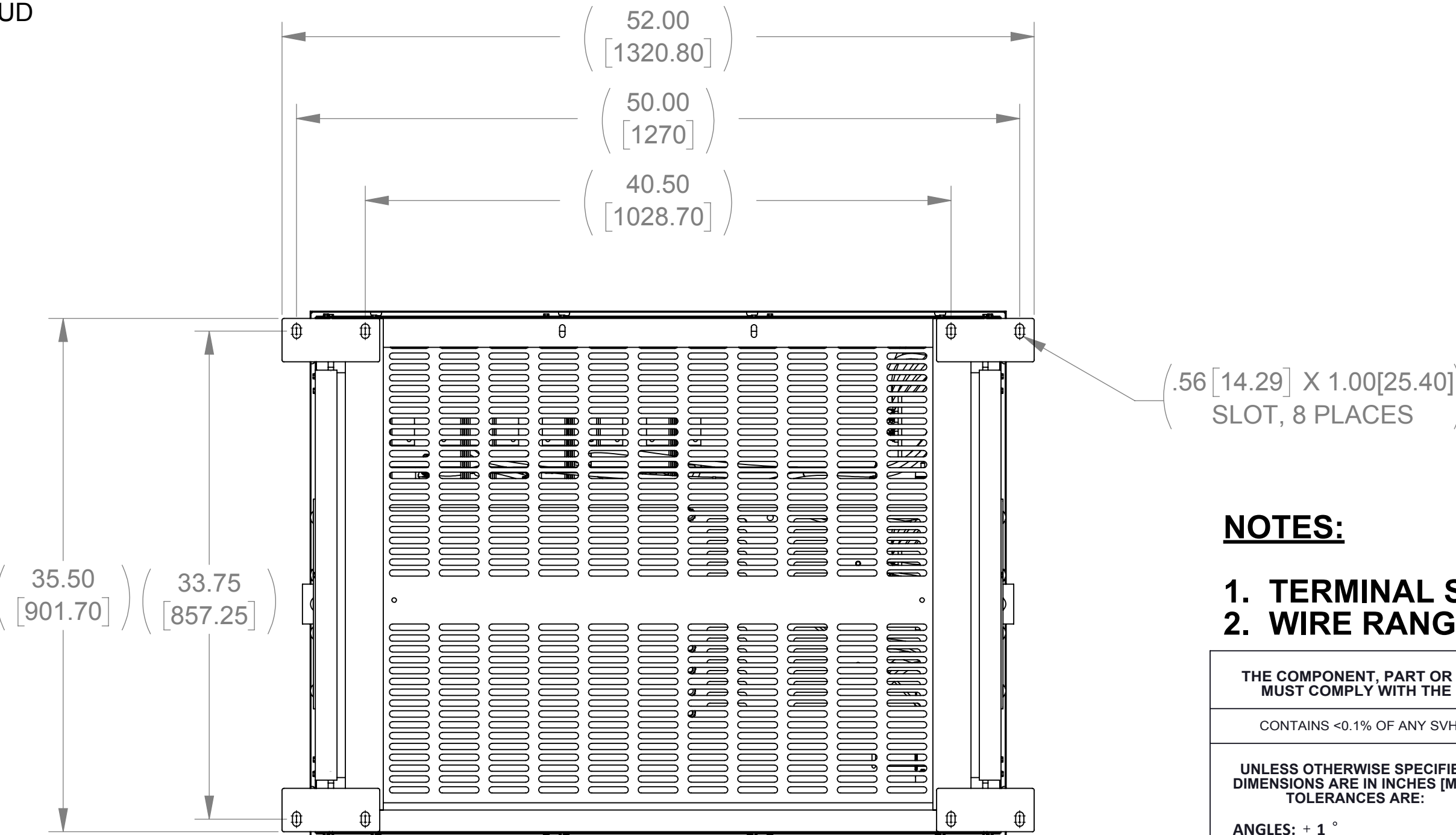
SIDE VIEW
(PANELS REMOVED)



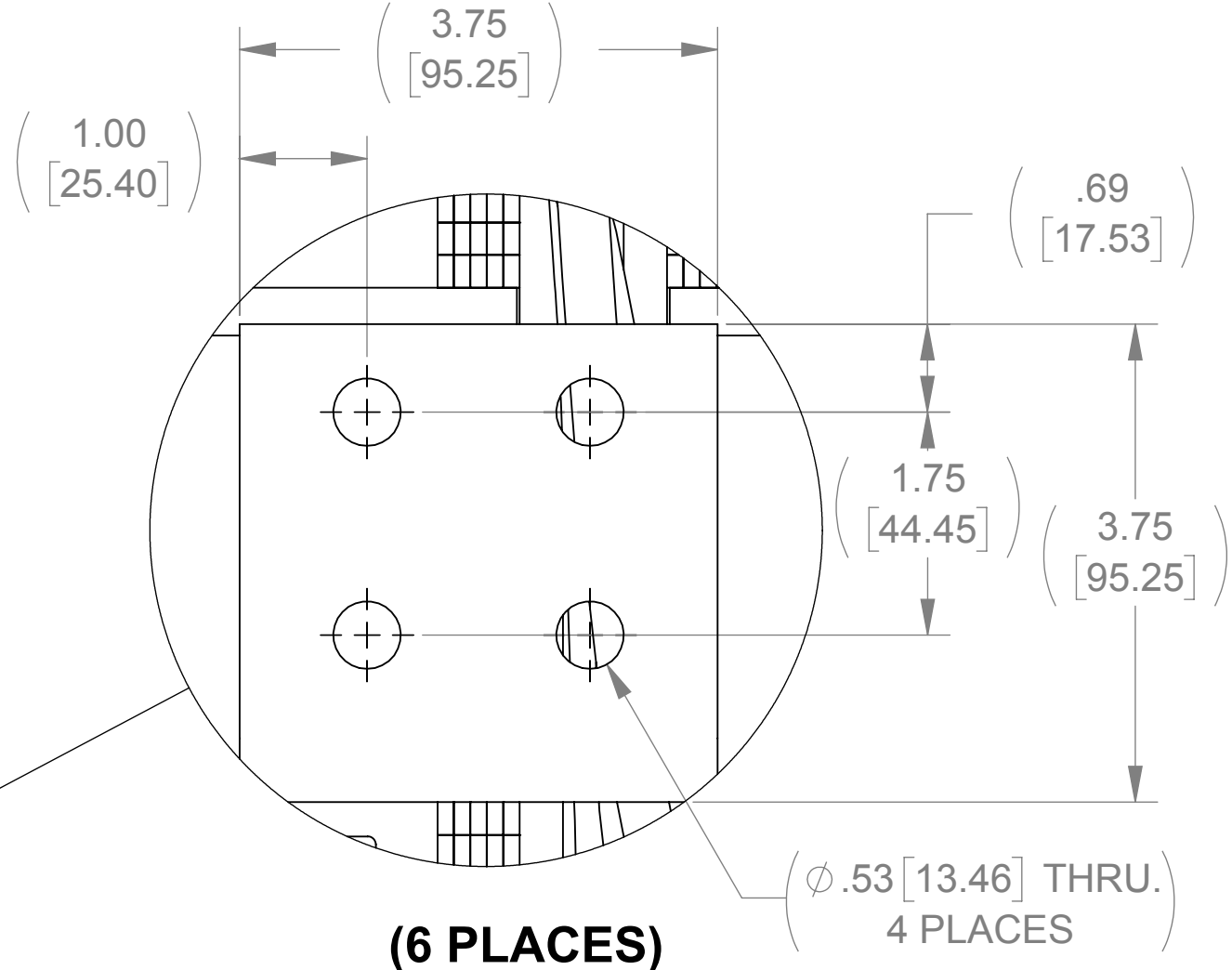
TOP VIEW
(PANELS REMOVED)



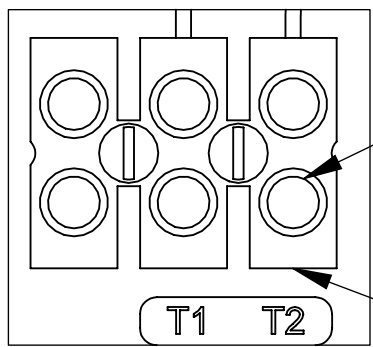
FRONT VIEW
(PANELS REMOVED)



BOTTOM VIEW



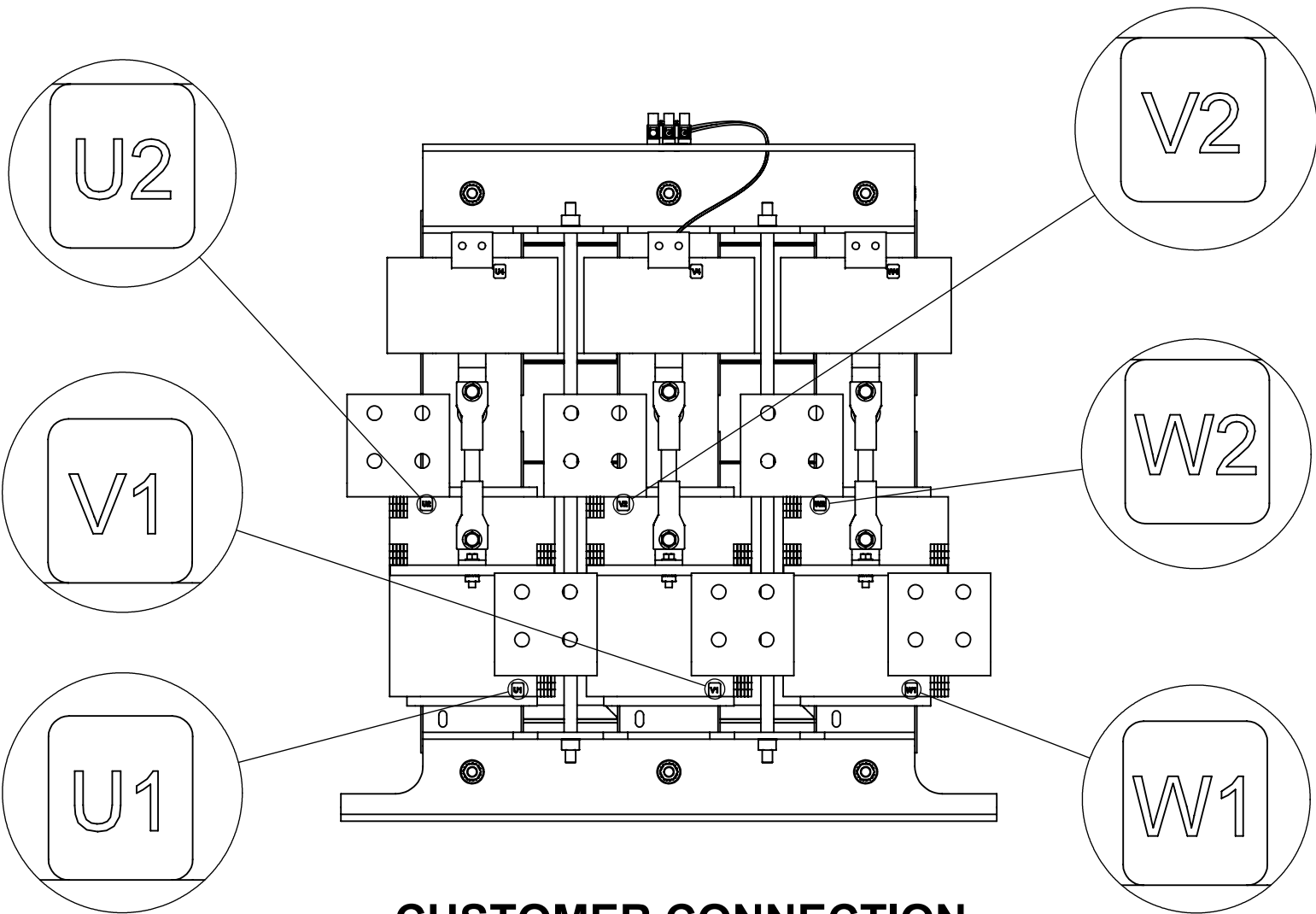
(6 PLACES)



DETAIL B
CUSTOMER CONNECTION
DETAIL VIEW (THERMAL)

SEE NOTE 1

SEE NOTE 2



CUSTOMER CONNECTION
DETAIL VIEW

NOTES:

1. TERMINAL SCREW TIGHTENING TORQUE: 16 IN/LBS.
2. WIRE RANGE: 4-14 AWG

THE COMPONENT, PART OR ASSEMBLY DESCRIBED IN THIS DOCUMENT MUST COMPLY WITH THE EU(EUROPEAN UNION) DIRECTIVE RoHS2		MATERIAL		CONFIDENTIAL AND PROPRIETARY INFORMATION THIS DOCUMENT CONTAINS CONFIDENTIAL AND PROPRIETARY INFORMATION OF MTE CORPORATION AND MAY NOT BE USED, COPIED OR DISCLOSED TO OTHERS EXCEPT WITH THE AUTHORIZED WRITTEN PERMISSION OF MTE CORPORATION	
CONTAINS <0.1% OF ANY SVHC BY WEIGHT PER REACH REGULATION				DESCRIPTION	
UNLESS OTHERWISE SPECIFIED DIMENSIONS ARE IN INCHES [MM] TOLERANCES ARE: ANGLES: $\pm 1^\circ$ 1 PLACE .X: $\pm .1 [2.5]$ 2 PLACE .XX: $\pm .01 [0.25]$ 3 PLACE .XXX: $\pm .005 [0.127]$		DRAWN SG 09/26/11		DATE 03/21/16	
MTE AN SL INDUSTRIES COMPANY N83 W13330 Leon Road Menomonee Falls, WI 53051 USA 800.455-4683 262.253-8200		CHECKED JM 03/21/16		DATE 03/21/16	
		APPROVED JM 03/21/16		SIZE D CD MAPG1000D	
				REV 05	
				SCALE 1:8	
				SHEET 1 OF 1	