

APPROX. WEIGHT
(LBS)
1589

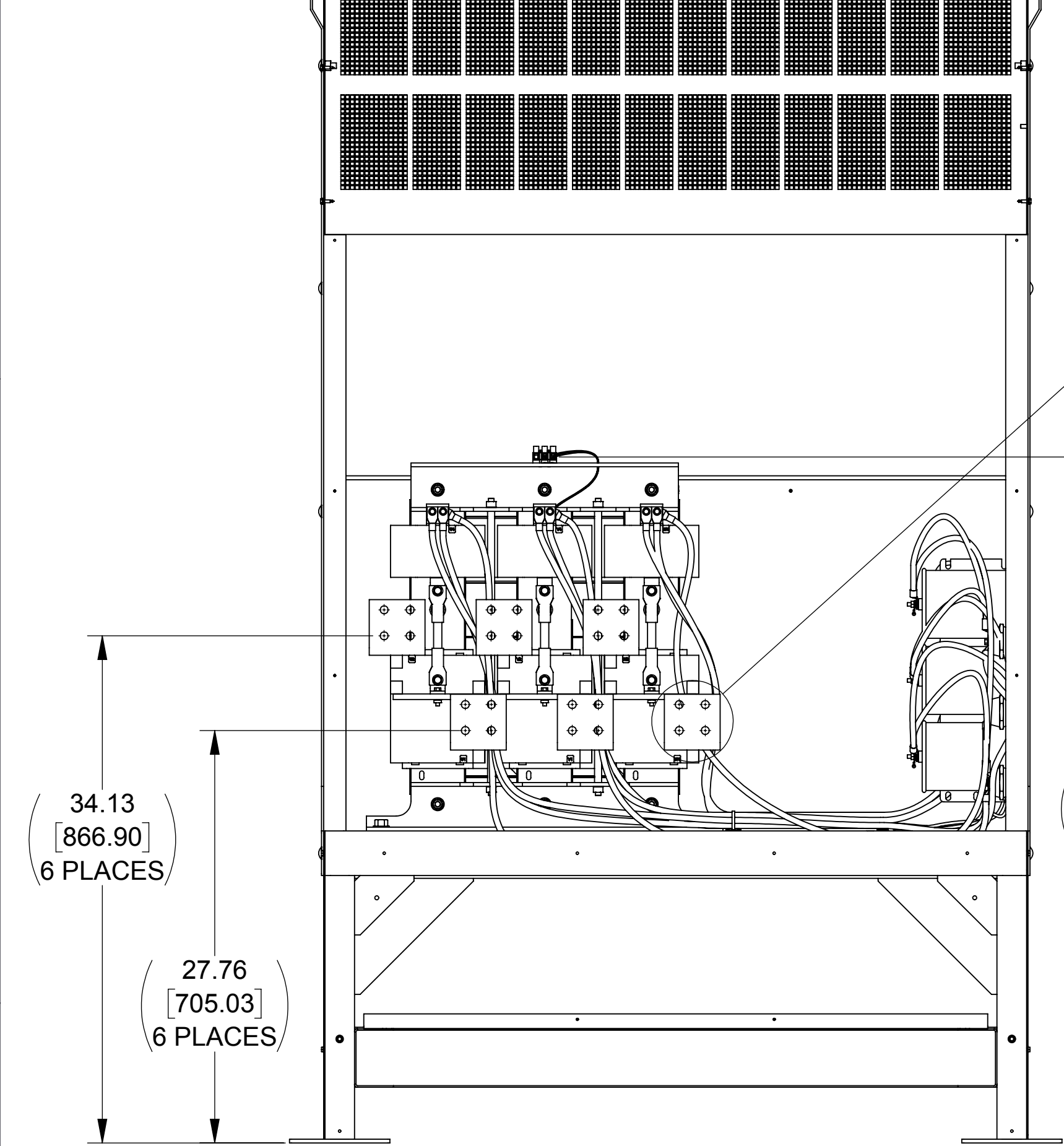
ECO No	DESCRIPTION	REV BY	DATE
M9783	CHANGED CAPPANEL-543 TO 543C AND 544 TO 544C	MN	03/08/16

D

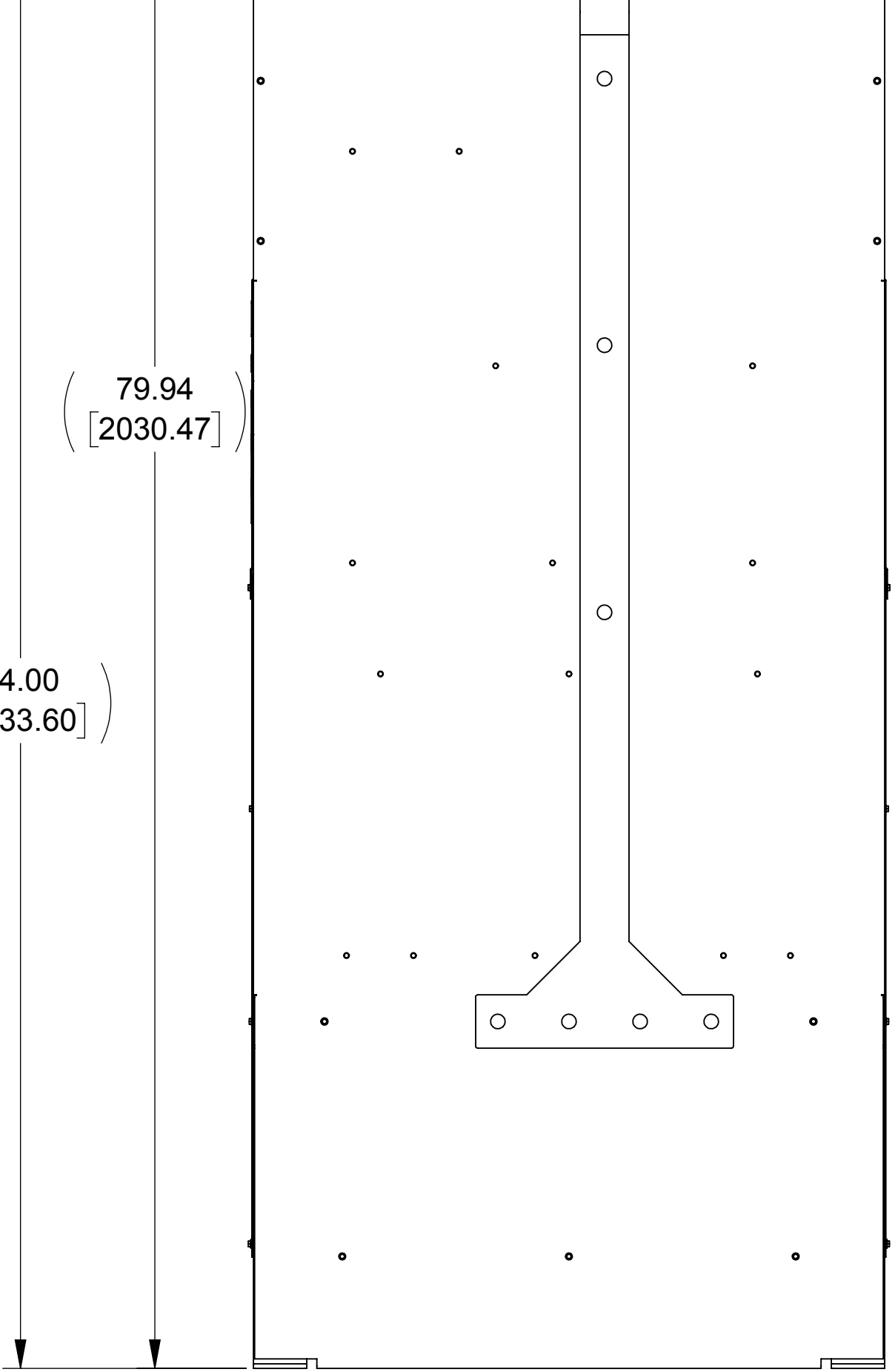
C

B

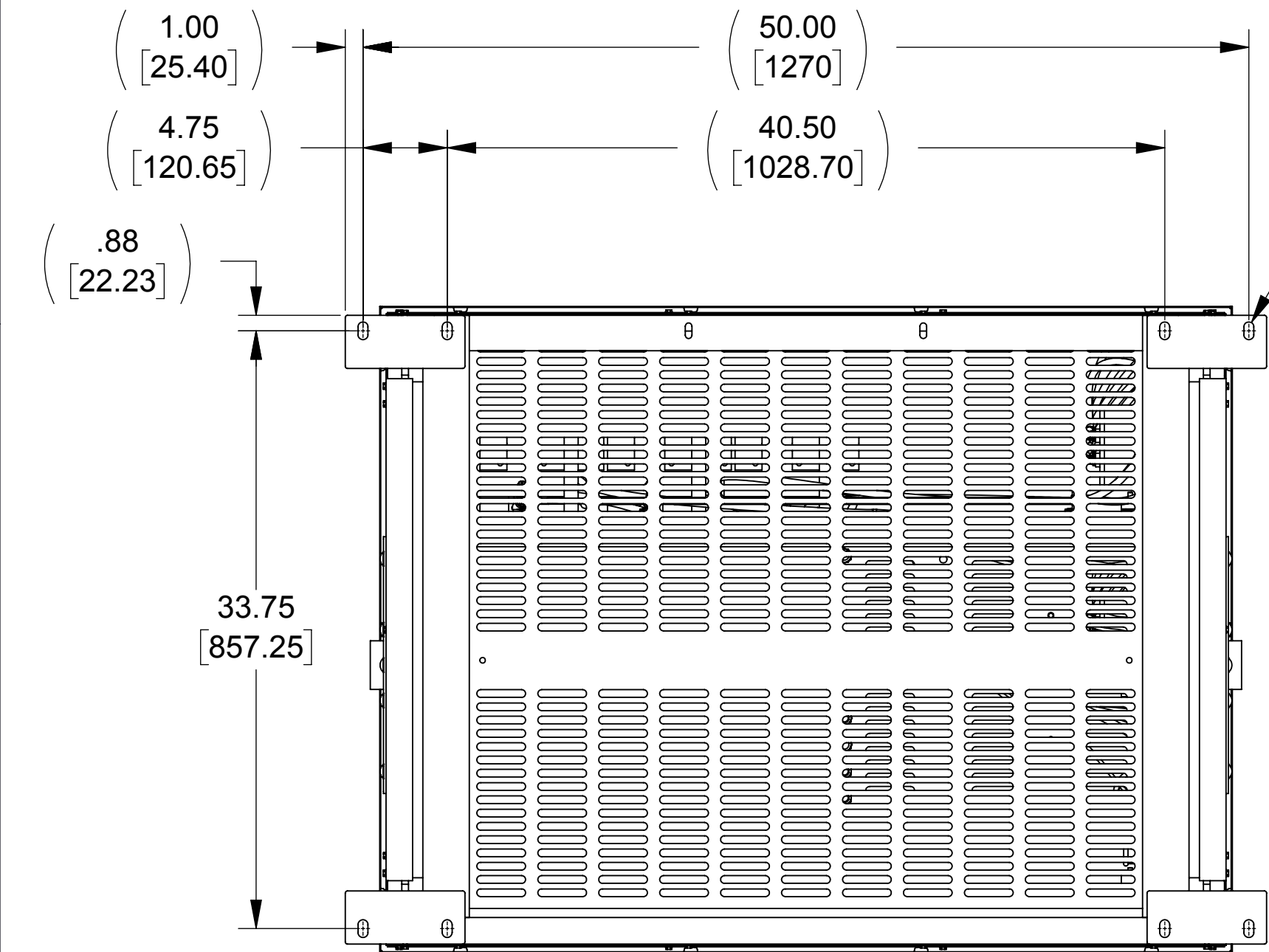
A



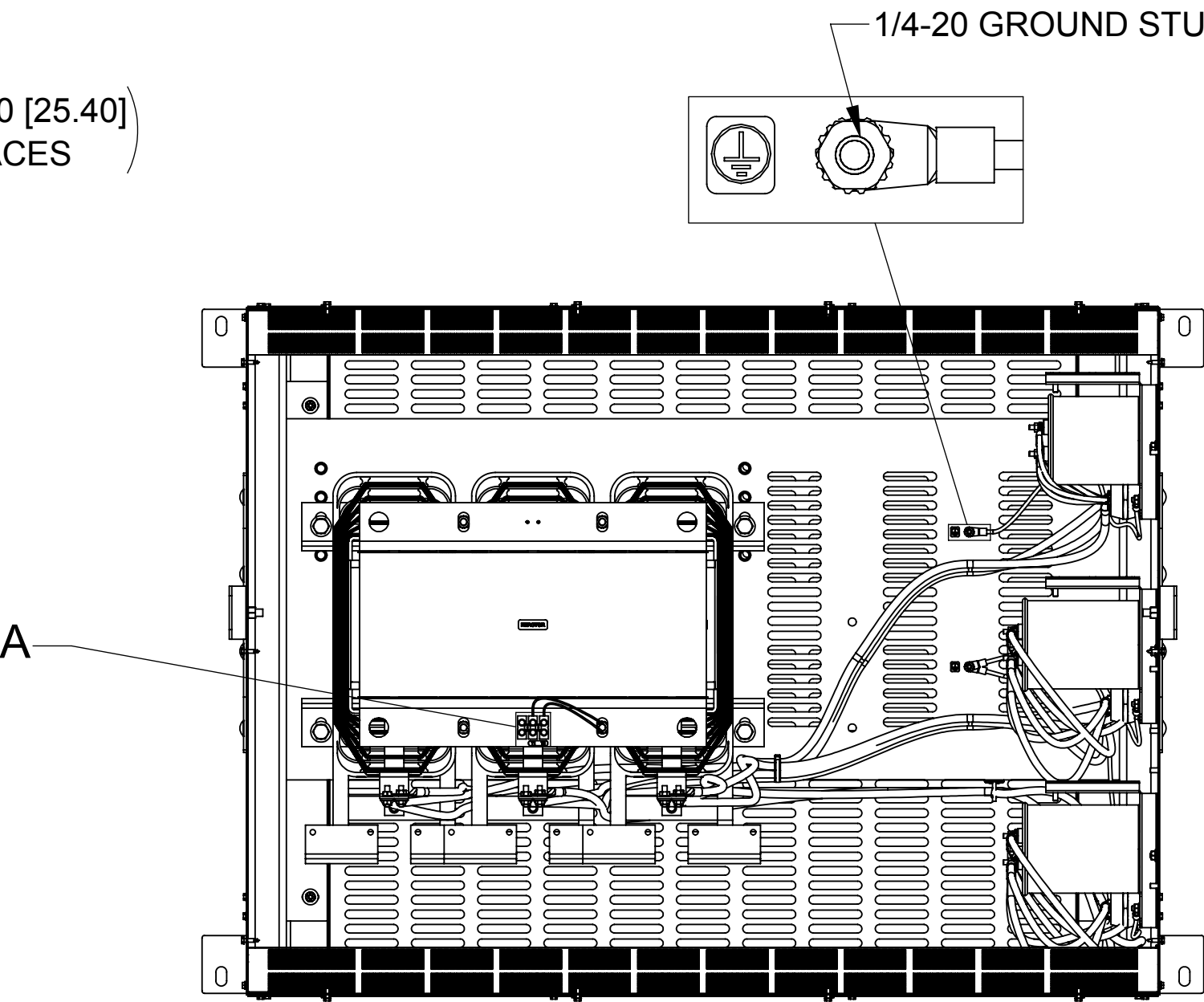
FRONT VIEW
(PANELS REMOVED)



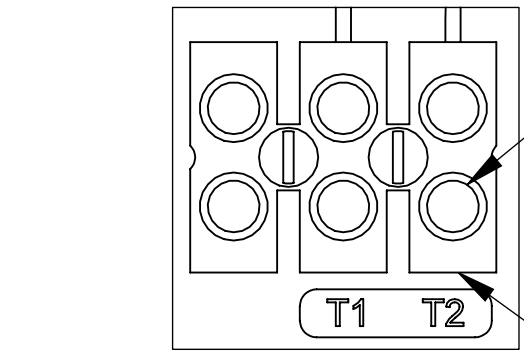
RIGHT SIDE VIEW



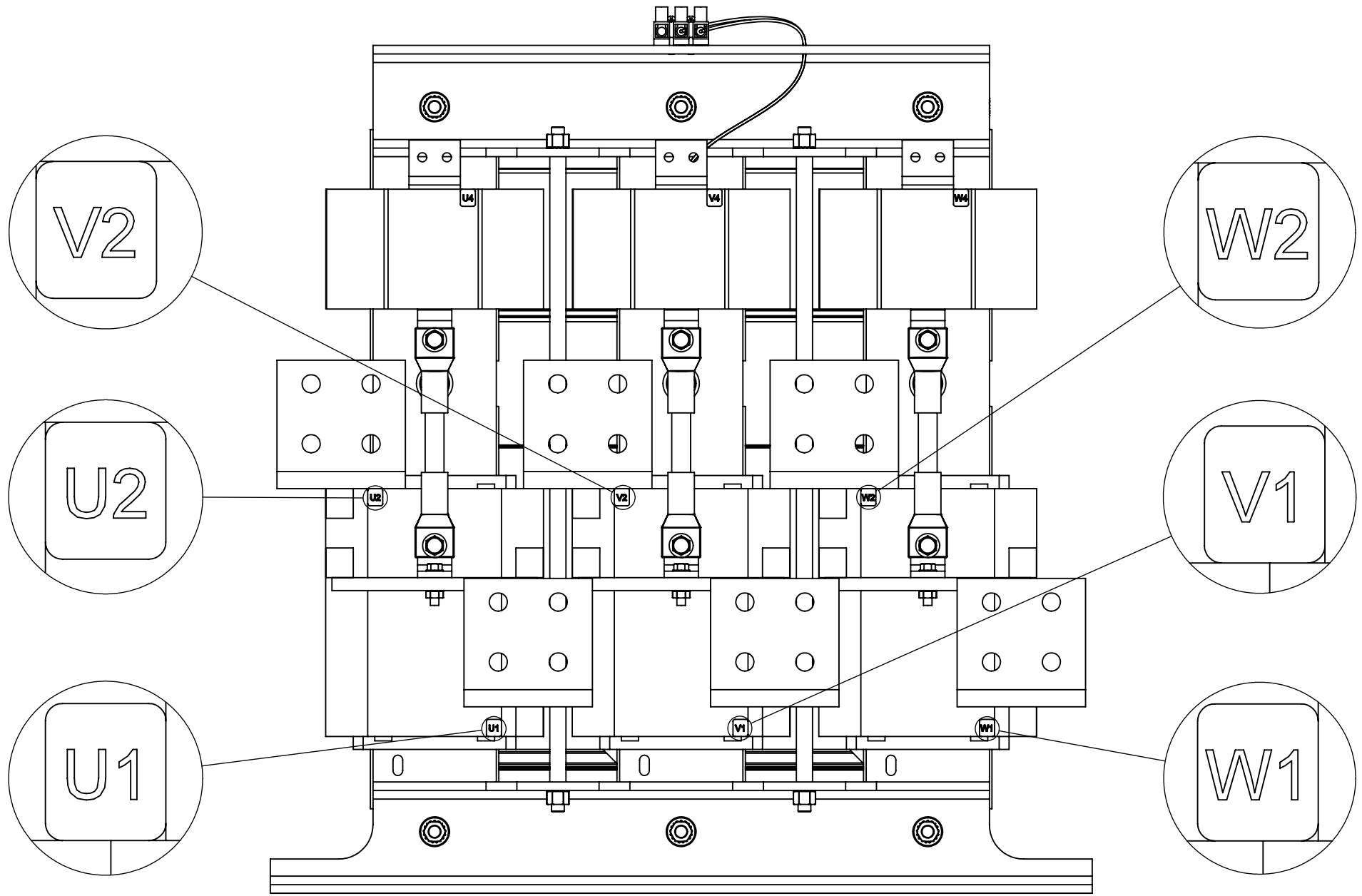
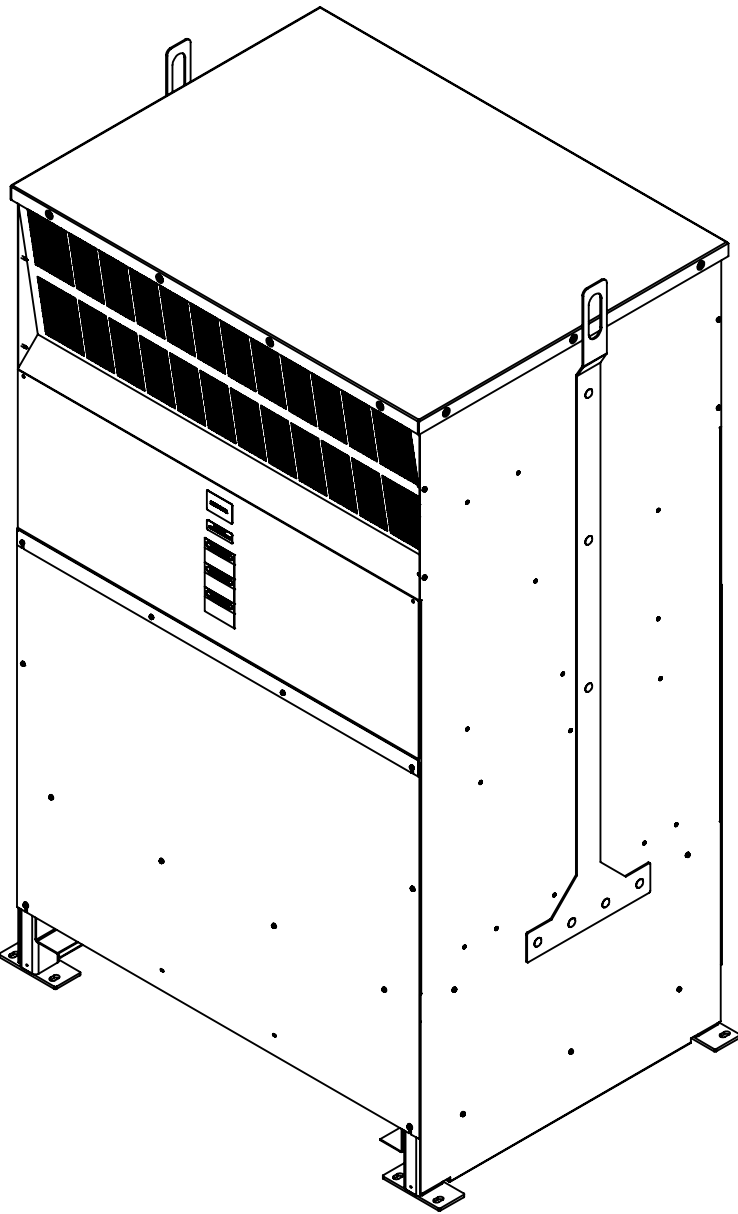
BOTTOM VIEW



TOP VIEW
(PANELS REMOVED)




DETAIL A
CUSTOMER CONNECTION
DETAIL VIEW (THERMAL)



CUSTOMER CONNECTION
DETAIL VIEW

NOTES:

1. TERMINAL SCREW TIGHTENING TORQUE: 16 IN/LBS.
2. WIRE RANGE: 4-14 AWG.

THE COMPONENT, PART OR ASSEMBLY DESCRIBED IN THIS DOCUMENT MUST COMPLY WITH THE EU(EUROPEAN UNION) DIRECTIVE RoHS2		MATERIAL		CONFIDENTIAL AND PROPRIETARY INFORMATION THIS DOCUMENT CONTAINS CONFIDENTIAL AND PROPRIETARY INFORMATION OF MTE CORPORATION AND MAY NOT BE USED, COPIED OR DISCLOSED TO OTHERS EXCEPT WITH THE AUTHORIZED WRITTEN PERMISSION OF MTE CORPORATION		
CONTAINS <0.1% OF ANY SVHC BY WEIGHT PER REACH REGULATION				DESCRIPTION		
UNLESS OTHERWISE SPECIFIED DIMENSIONS ARE IN INCHES [MM] TOLERANCES ARE: ANGLES: ± 1 ° 1 PLACE .X: ± .1 [2.5] 2 PLACE .XX: ± .01 [0.25] 3 PLACE .XXX: ± .005 [0.127]	 <div>N83 W13330 Leon Road Menomonee Falls, WI 53051 USA 800.455-4683 262.253.8200</div>	DRAWN	DATE	MATRIX AP 850A 480V 60HZ FILTER, NEMA 1/2 ENCL		
		SG	09/28/11			
		CHECKED	DATE			
		JM	03/21/16			
		APPROVED	DATE	SIZE	DWG No.	REV
		JM	03/21/16	D	CD MAPG0850D	06
				SCALE	1:8	SHEET 1 OF 1