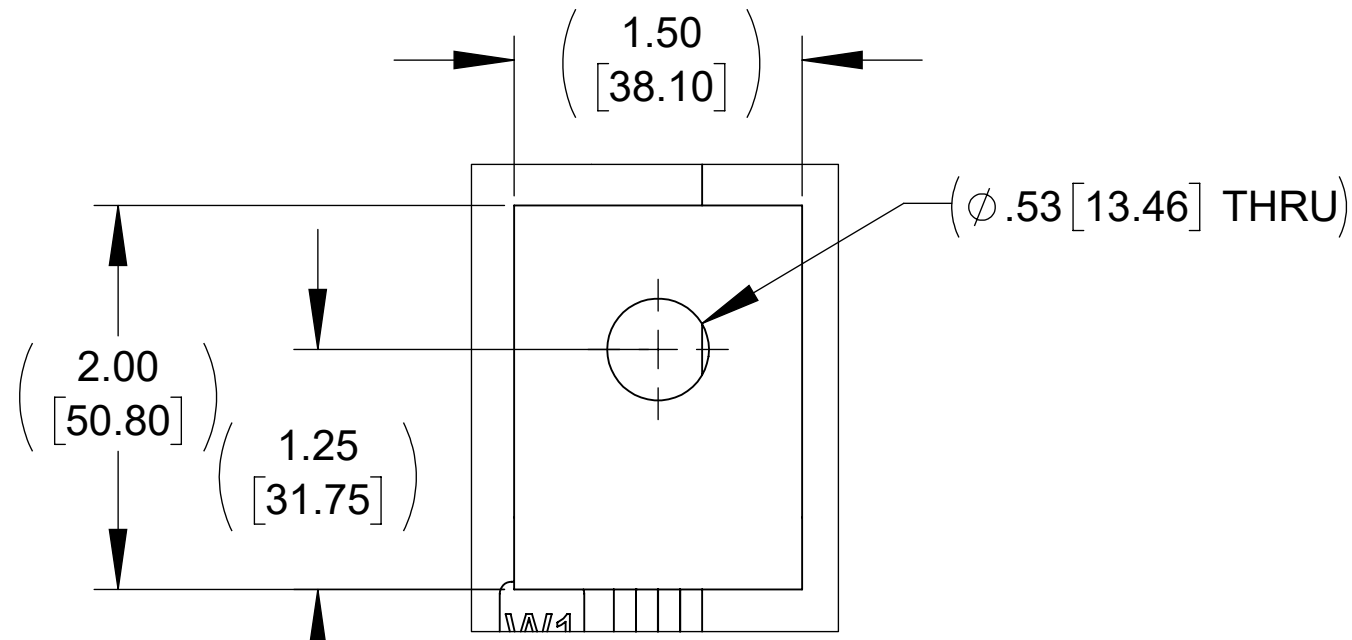
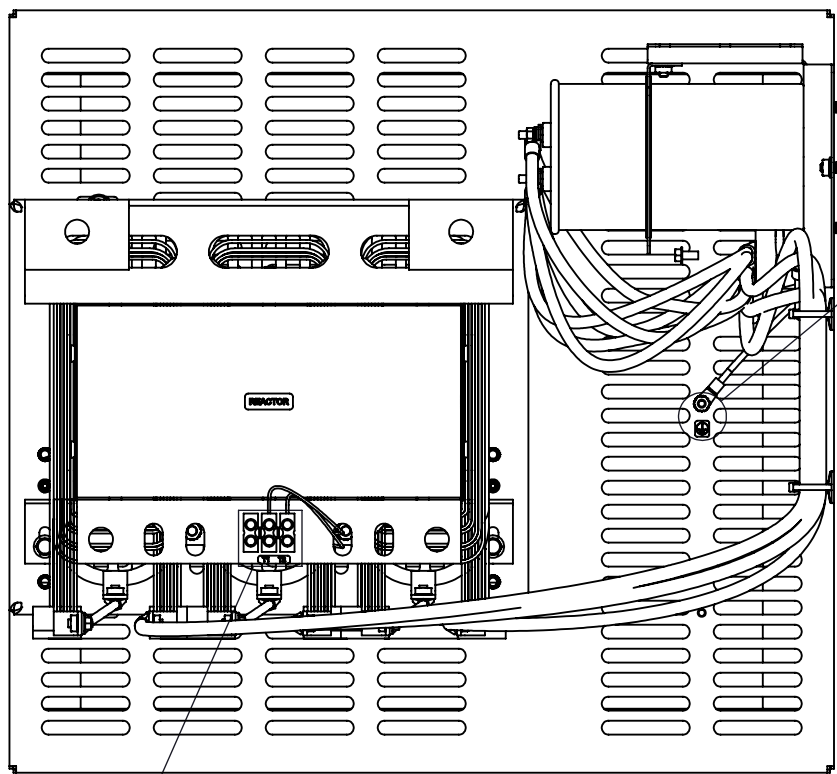
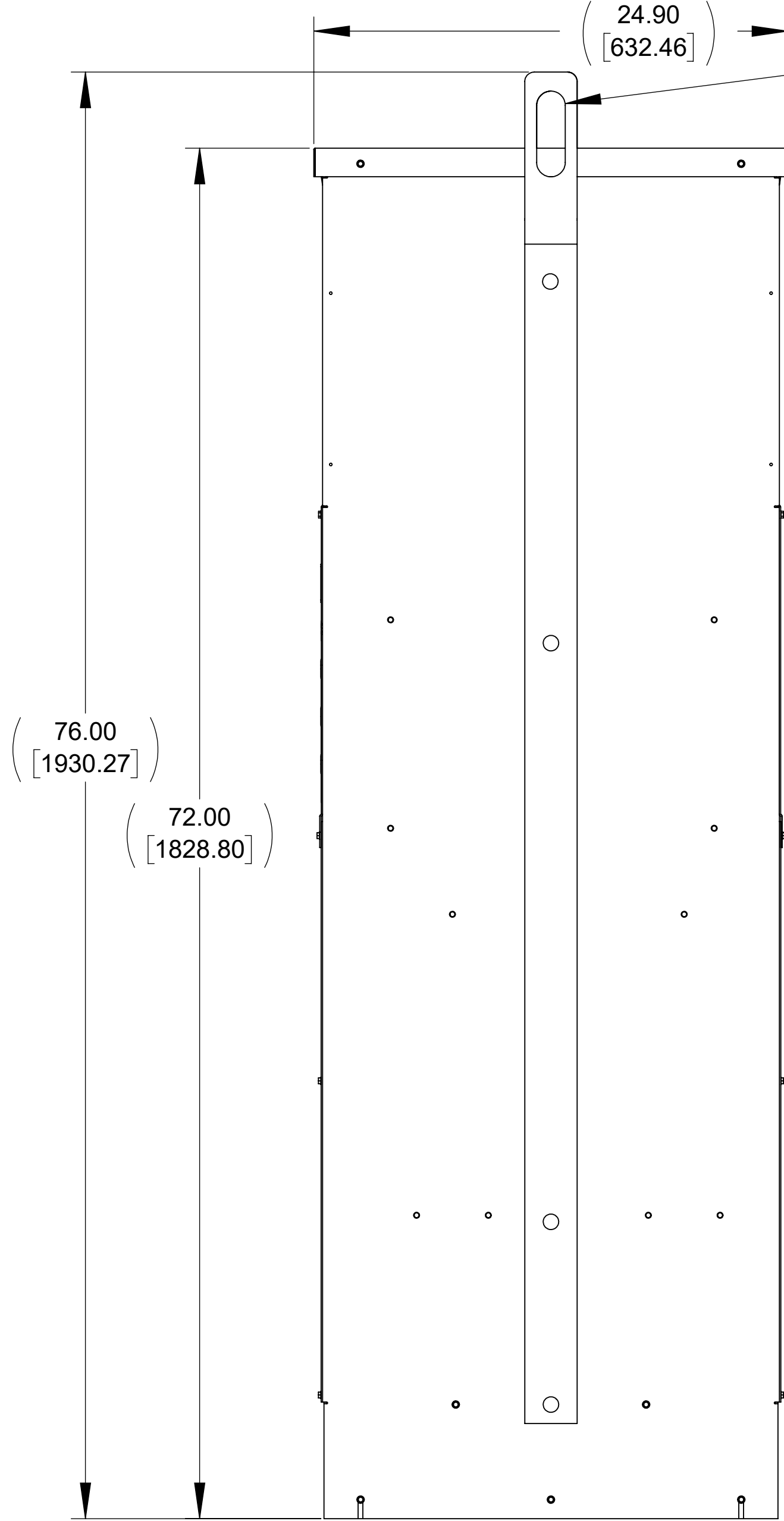
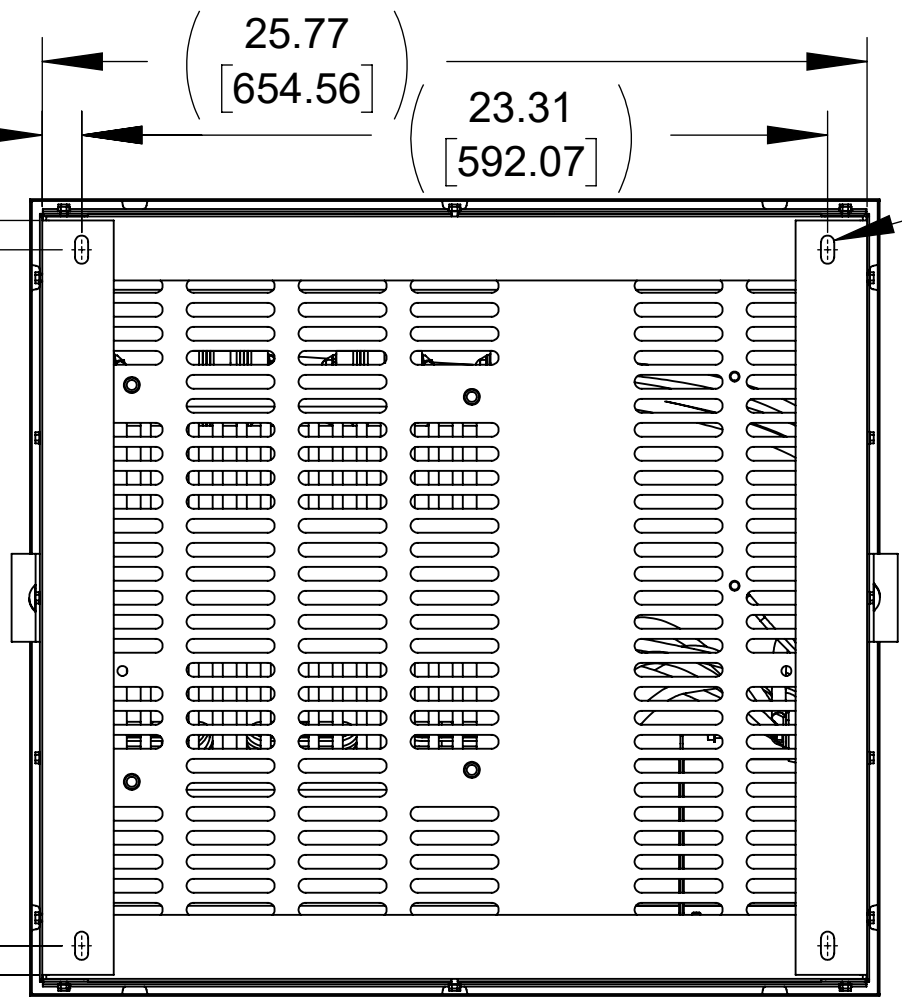
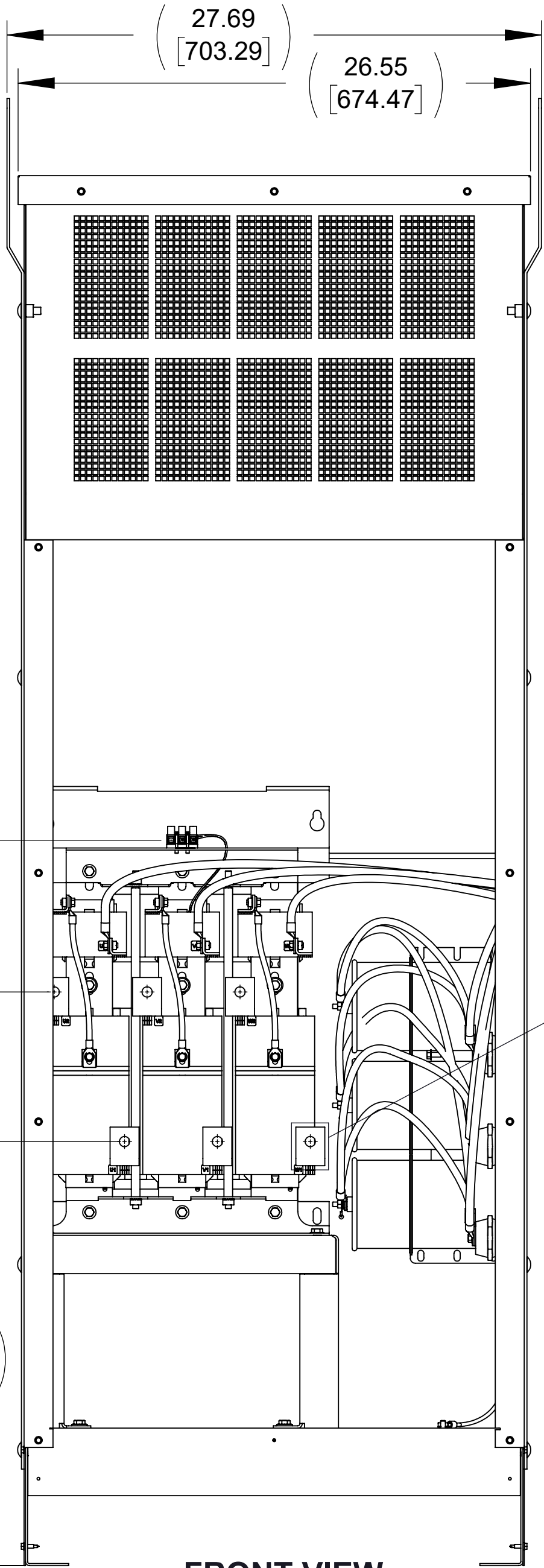
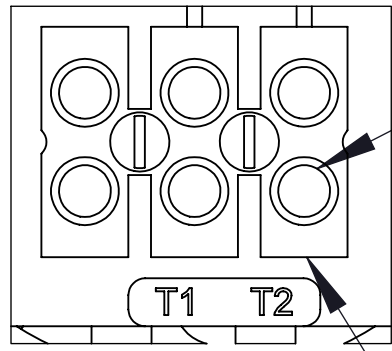


APPROX. WEIGHT
(LBS)
655



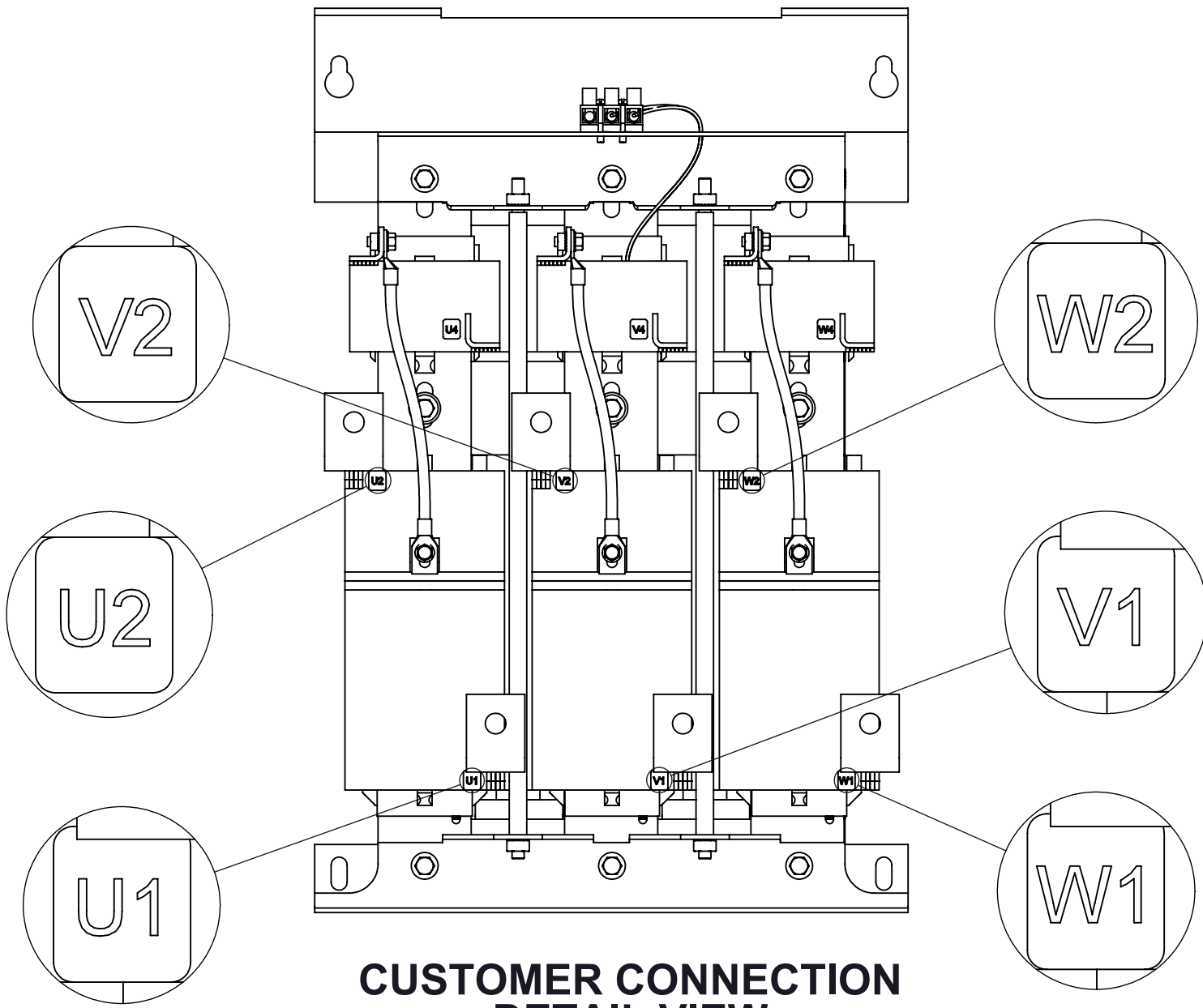
**DETAIL A
(6 PLACES)**



**DETAIL B
CUSTOMER CONNECTION
DETAIL VIEW (THERMAL)**

SEE NOTE 2


SEE NOTE 1



**CUSTOMER CONNECTION
DETAIL VIEW**

NOTES:

1. TERMINAL WIRE RANGE: 4-14 AWG.
2. TERMINAL SCREW TIGHTENING TORQUE: 16 IN/LBS.
3. REFER TO USER MANUAL FOR COMPLETE INSTALLATION INSTRUCTIONS.

THE COMPONENT, PART OR ASSEMBLY DESCRIBED IN THIS DOCUMENT MUST COMPLY WITH THE EU(EUROPEAN UNION) DIRECTIVE RoHS2		MATERIAL		CONFIDENTIAL AND PROPRIETARY INFORMATION THIS DOCUMENT CONTAINS CONFIDENTIAL AND PROPRIETARY INFORMATION OF MTE CORPORATION AND MAY NOT BE USED, COPIED OR DISCLOSED TO OTHERS EXCEPT WITH THE AUTHORIZED WRITTEN PERMISSION OF MTE CORPORATION		
CONTAINS <0.1% OF ANY SVHC BY WEIGHT PER REACH REGULATION						
UNLESS OTHERWISE SPECIFIED DIMENSIONS ARE IN INCHES [MM] TOLERANCES ARE: ANGLES: ± 1 ° 1 PLACE .X: ± .1 [2.5] 2 PLACE .XX: ± .03 [0.76] 3 PLACE .XXX: ± .010 [0.254]		 <div>N83 W13330 Leon Road Menomonee Falls, WI 53051 USA 800.455-4683 262.253.8200</div>		DESCRIPTION MATRIX AP 403A 480V 60HZ FILTER NEMA, 1/2 ENCL		
		DRAWN MM	DATE 10/02/13	SIZE D	DWG No. CD MAPG0403D	REV 05
		CHECKED MN	DATE 03/27/20			
		APPROVED PY	DATE 03/30/20	SCALE 1:6		SHEET 1 OF 1