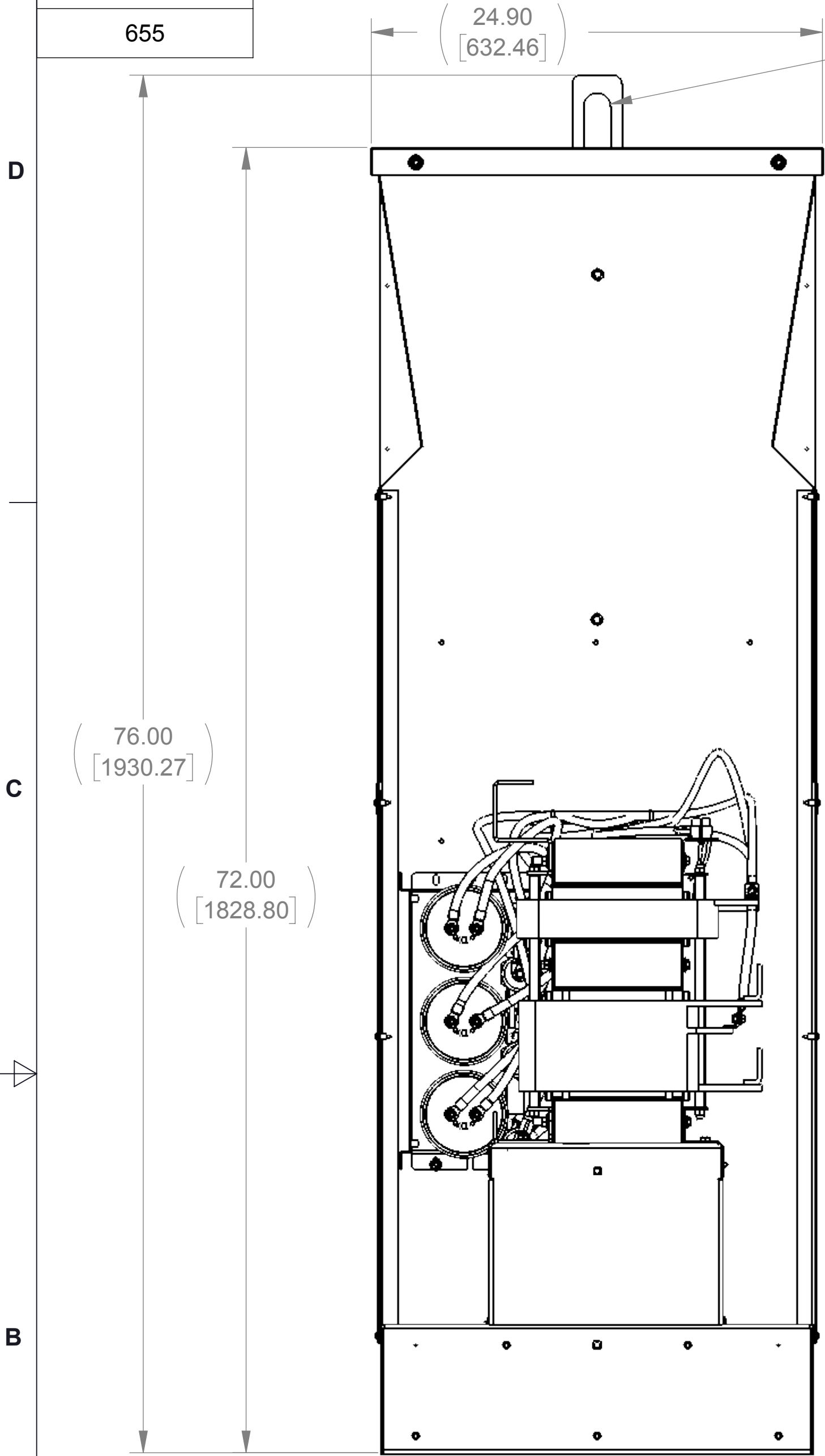
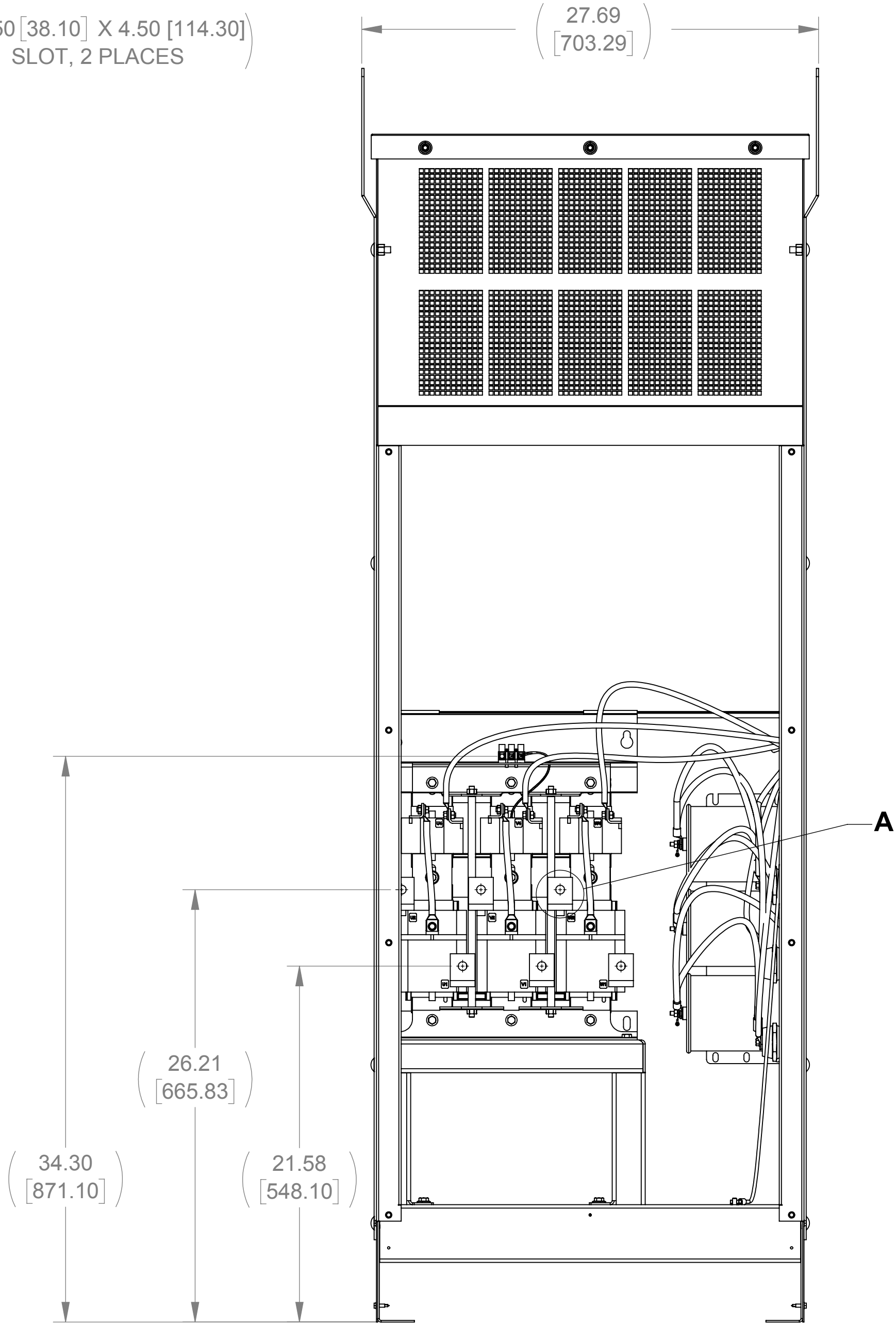


APPROX. WEIGHT (LBS)
655

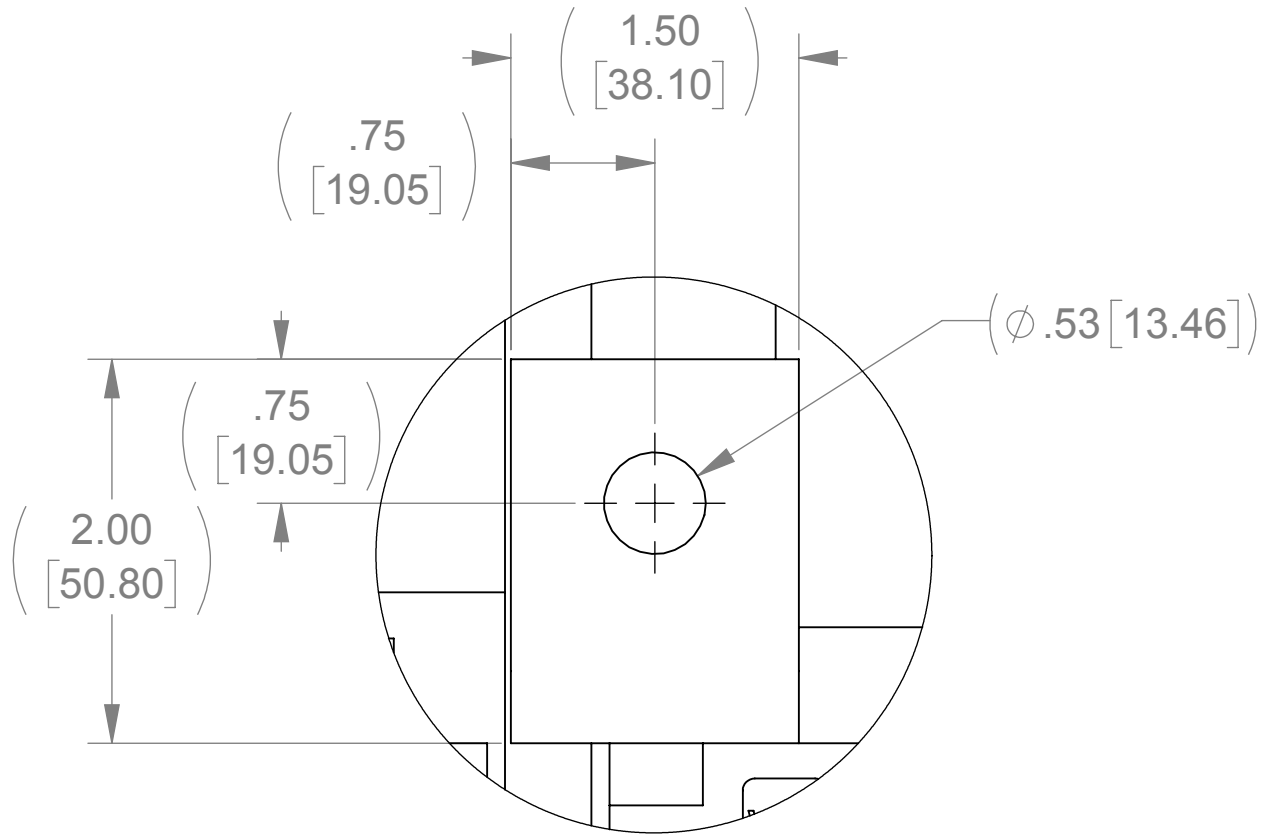
ECO No	DESCRIPTION	REV BY	DATE
M9783	CHANGED CAPPANEL-543 TO 543C	MN	02/23/16



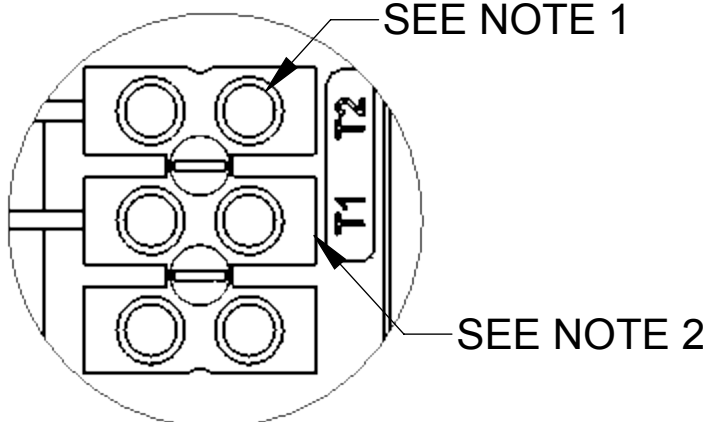
LEFT SIDE VIEW  
(PANELS REMOVED)



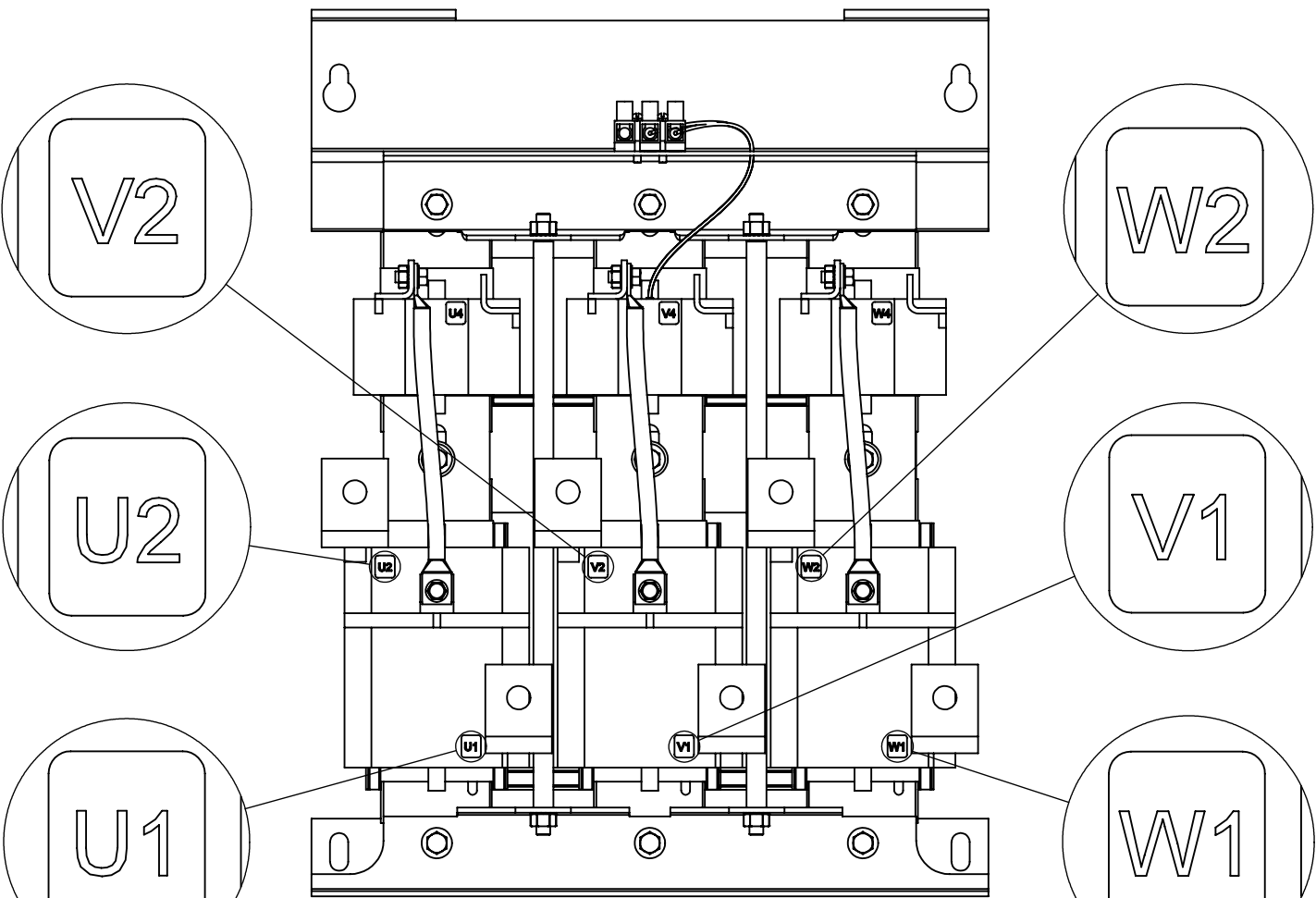
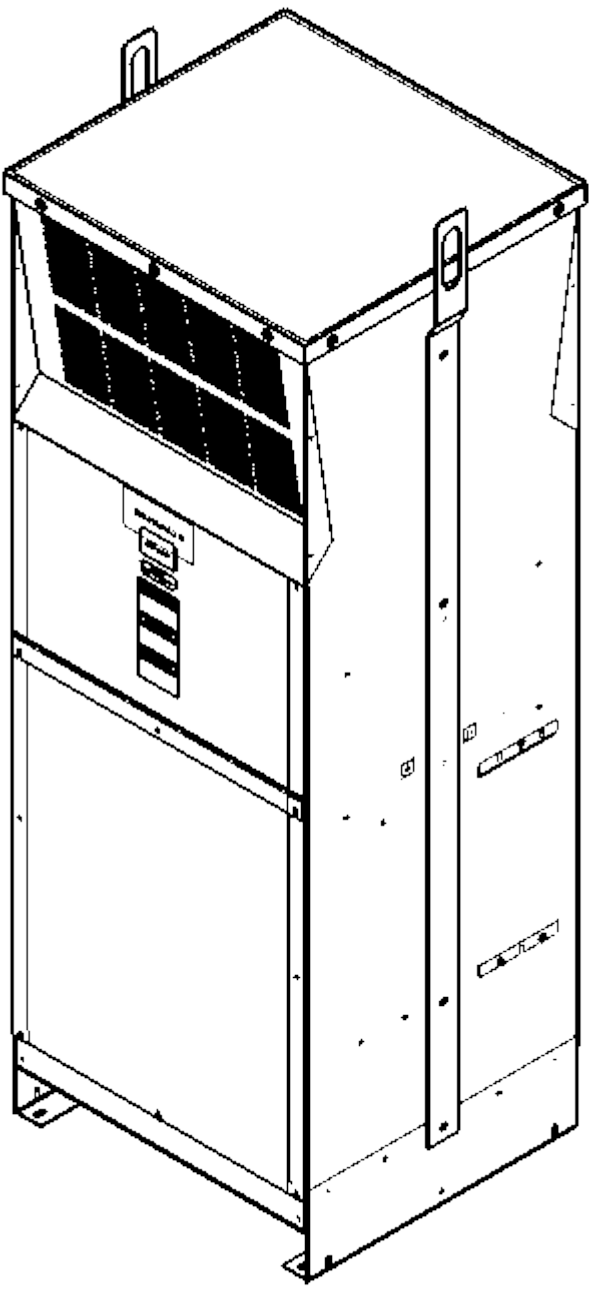
FRONT VIEW  
(PANELS REMOVED)



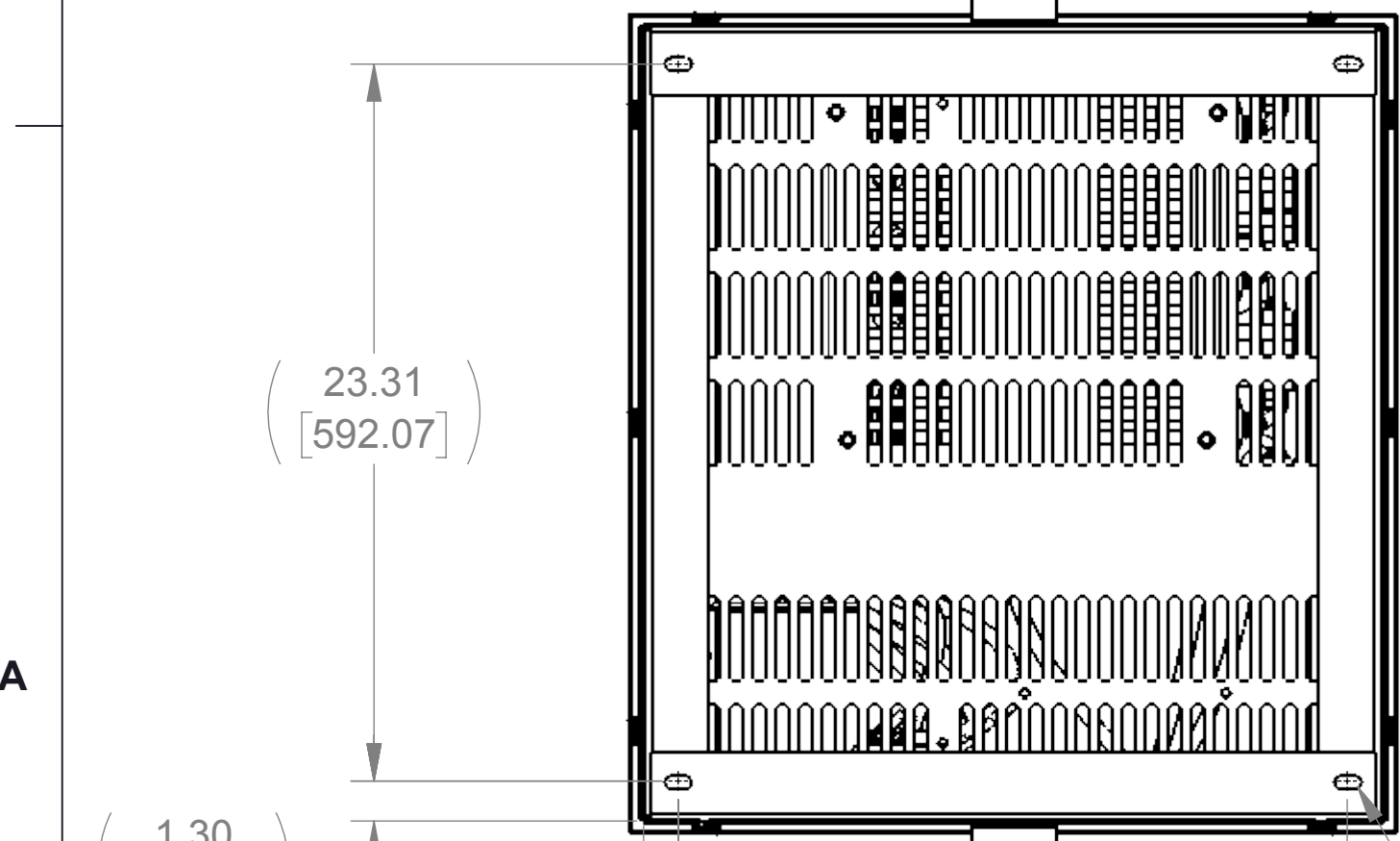
DETAIL A  
(6 PLACES)



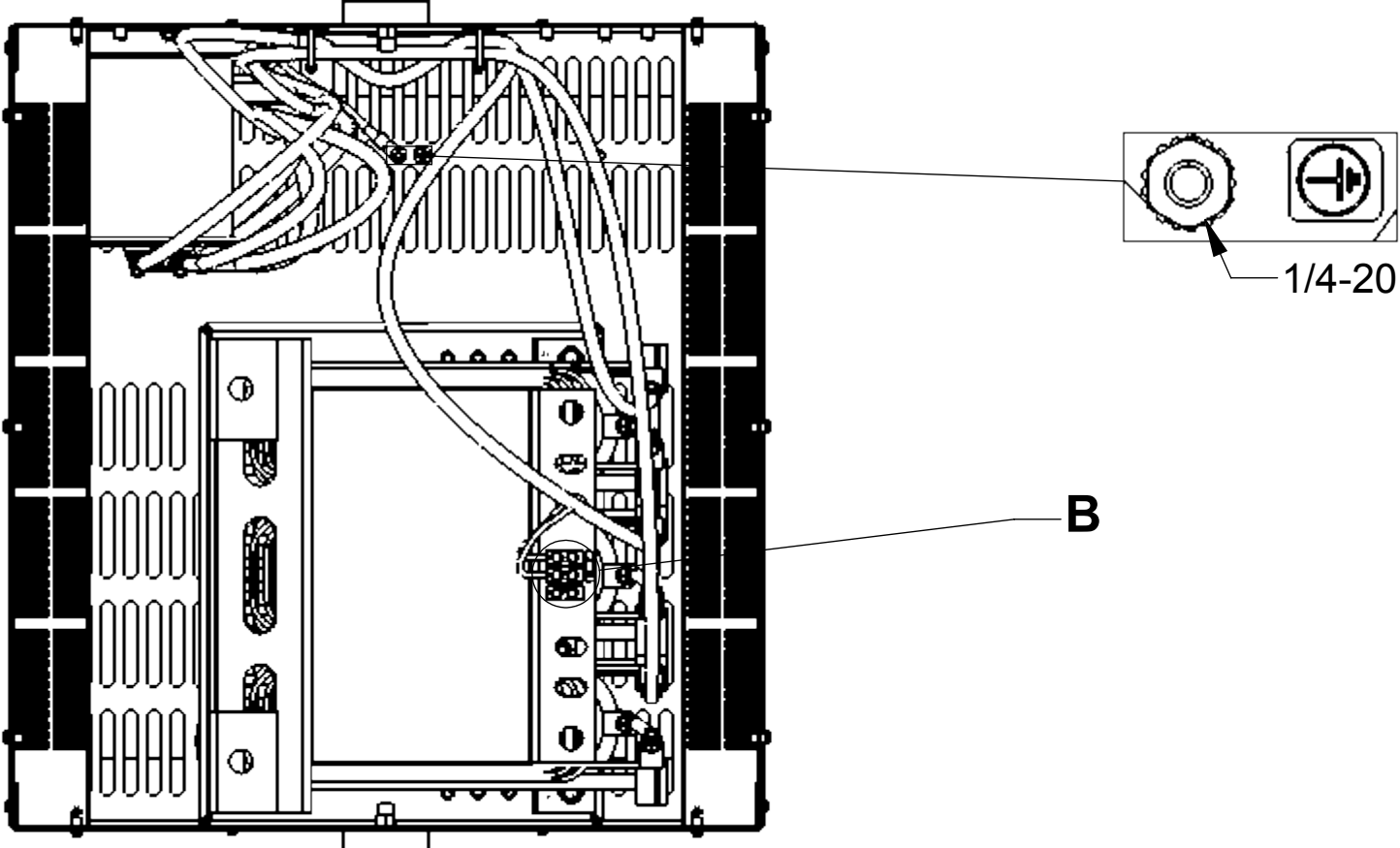
DETAIL B  
CUSTOMER CONNECTION  
DETAIL VIEW (THERMAL)



CUSTOMER CONNECTION  
DETAIL VIEW



BOTTOM VIEW



TOP VIEW  
(PANELS REMOVED)



NOTE:  
1. TERMINAL SCREW TIGHTENING TORQUE: 16 IN/LBS.  
2. WIRE RANGE: 4-14 AWG.

THE COMPONENT, PART OR ASSEMBLY DESCRIBED IN THIS DOCUMENT MUST COMPLY WITH THE EU(EUROPEAN UNION) DIRECTIVE RoHS2		MATERIAL		CONFIDENTIAL AND PROPRIETARY INFORMATION THIS DOCUMENT CONTAINS CONFIDENTIAL AND PROPRIETARY INFORMATION OF MTE CORPORATION AND MAY NOT BE USED, COPIED OR DISCLOSED TO OTHERS EXCEPT WITH THE AUTHORIZED WRITTEN PERMISSION OF MTE CORPORATION	
CONTAINS <0.1% OF ANY SVHC BY WEIGHT PER REACH REGULATION				DESCRIPTION	
UNLESS OTHERWISE SPECIFIED DIMENSIONS ARE IN INCHES [MM] TOLERANCES ARE: ANGLES: ± 1 ° 1 PLACE .X: ± .1 [2.5] 2 PLACE .XX: ± .03 [0.76] 3 PLACE .XXX: ± .010 [0.254]		MTE AN BL POWER ELECTRONICS COMPANY N83 W13330 Leon Road Menomonee Falls, WI 53051 USA 800.455.4683 262.253.8200		MATRIX AP 320A 480V 60HZ FILTER, NEMA 1/2 ENCLOSURE	
DRAWN JS		DATE 11/25/11		SIZE D	
CHECKED JM		DATE 03/21/16		DWG No CD MAPG0320D	
APPROVED JM		DATE 03/21/16		REV 02	
SCALE 1:6				SHEET 1 OF 1	