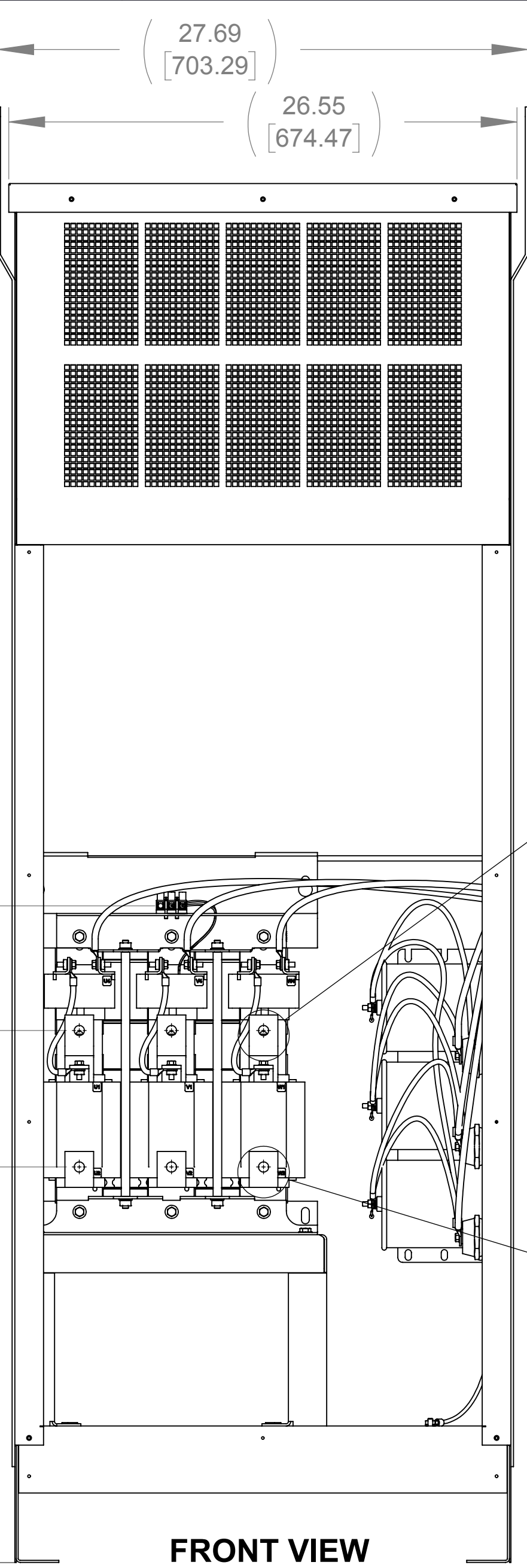
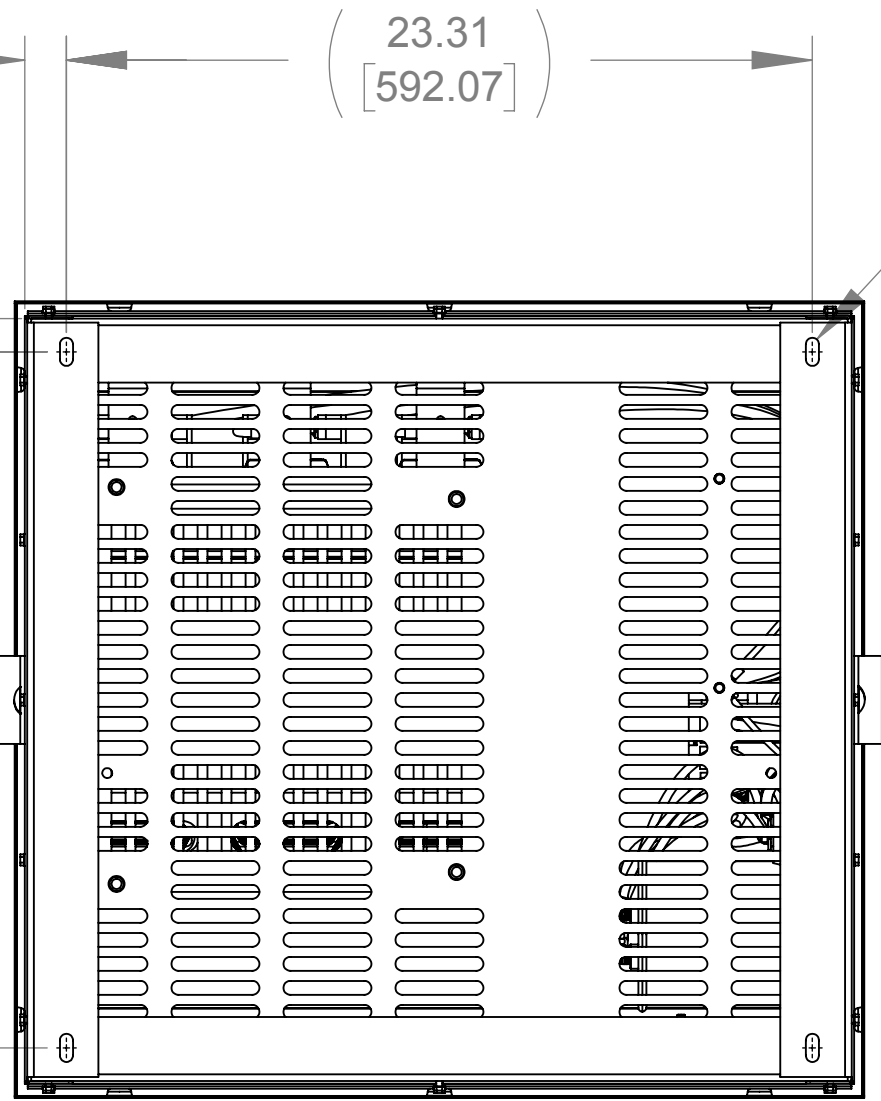


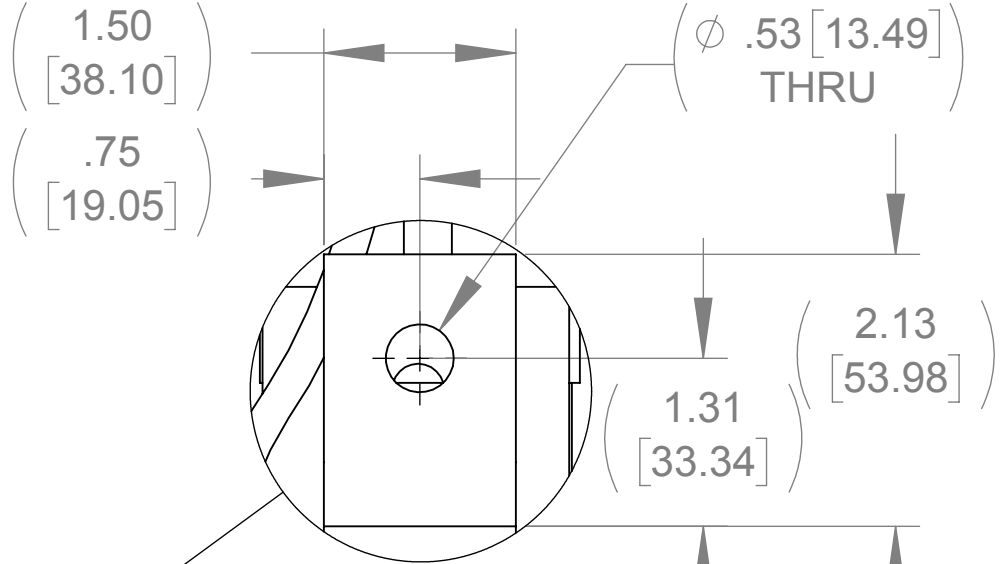
APPROX. WEIGHT
(LBS)
661



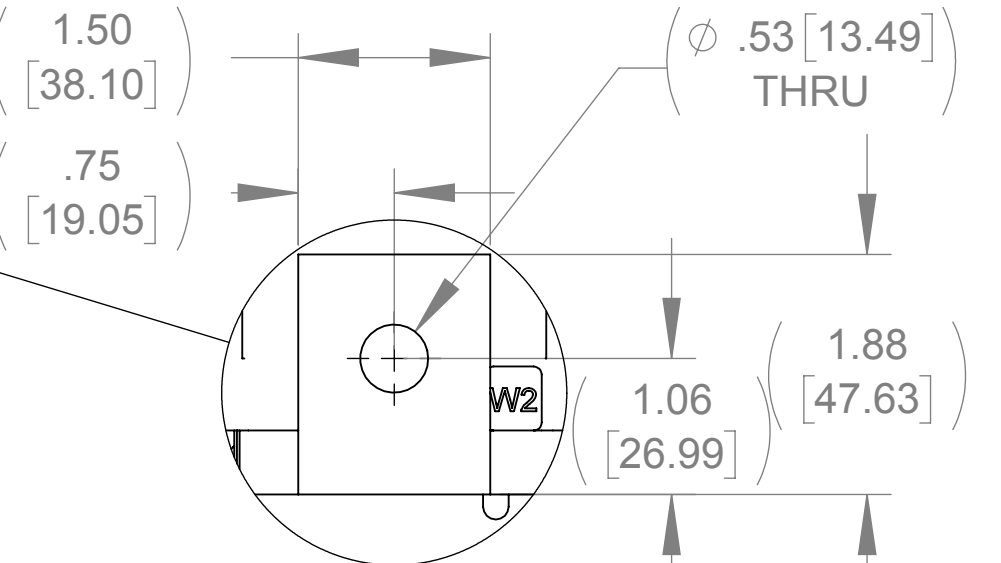
FRONT VIEW
(PANELS REMOVED)



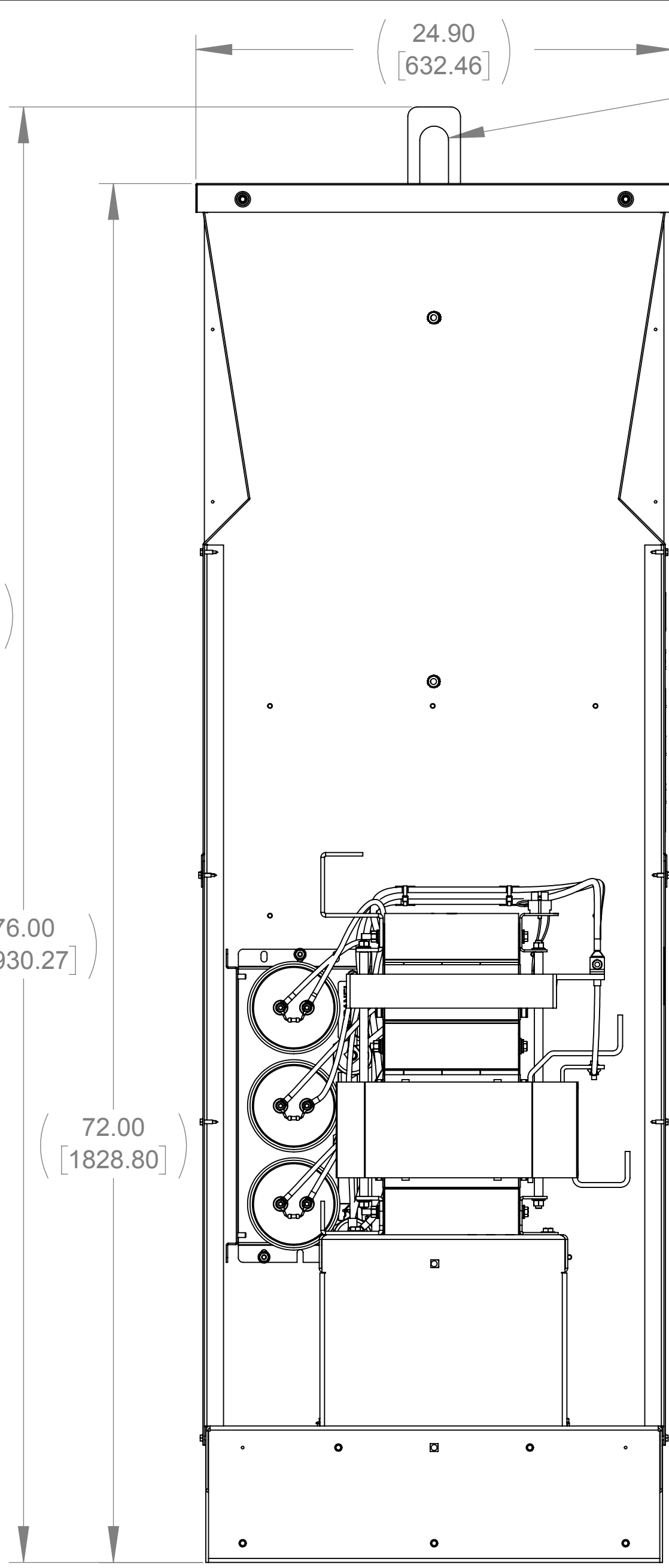
BOTTOM VIEW



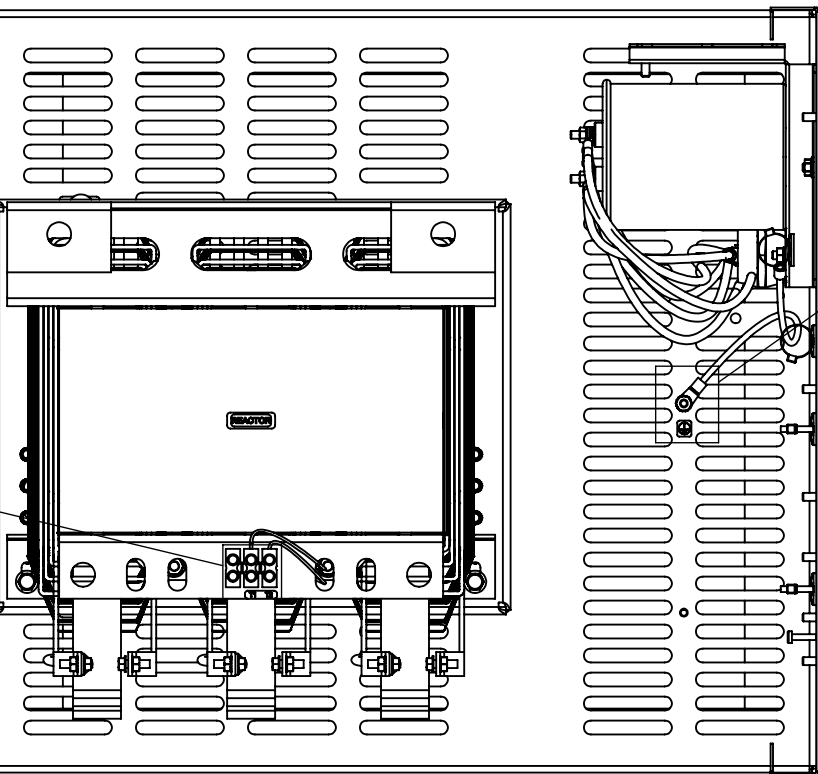
DETAIL A
(3 PLACES)



DETAIL B
(3 PLACES)

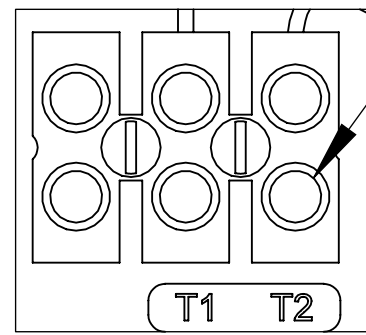


SIDE VIEW
(PANELS REMOVED)



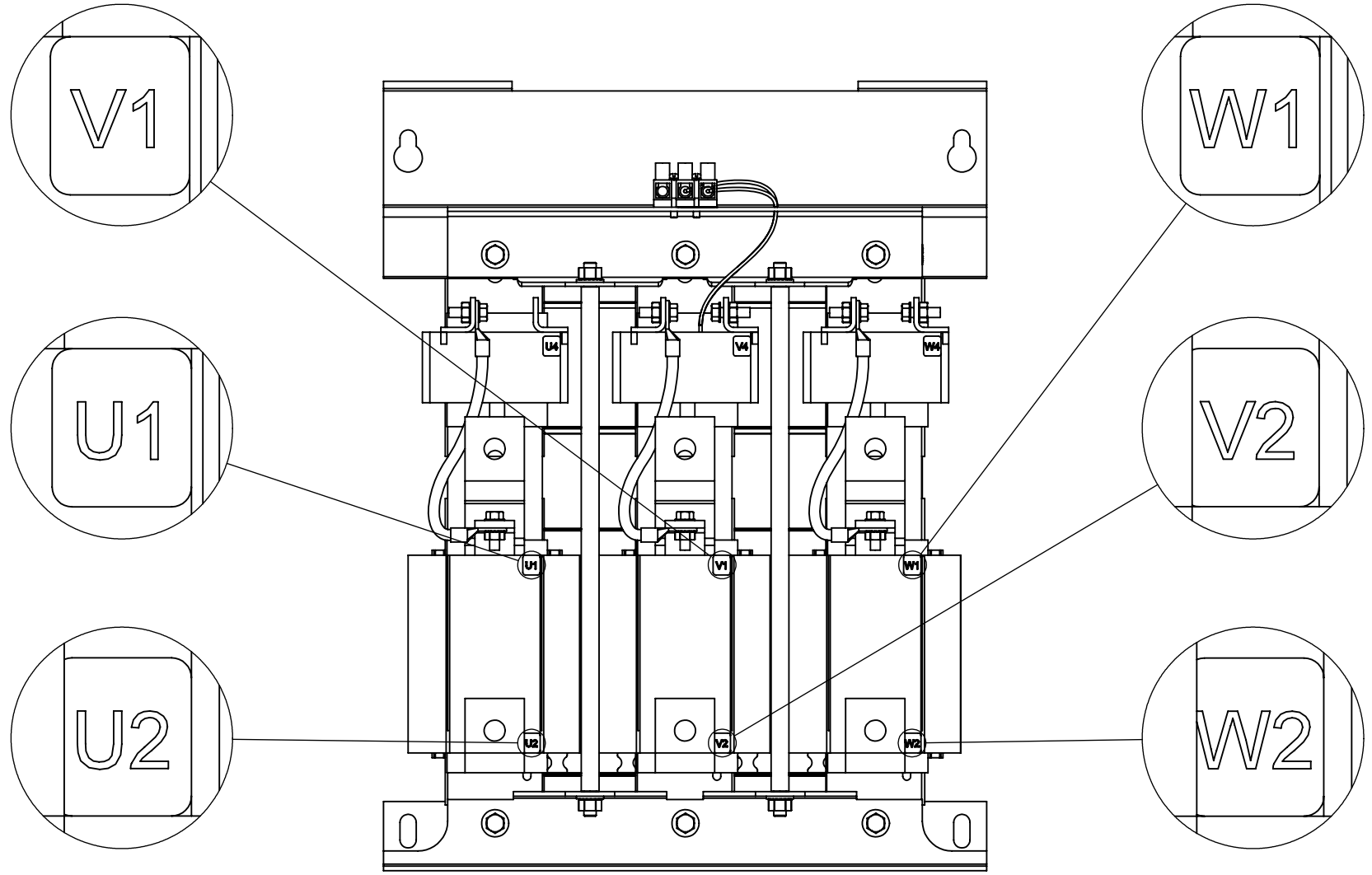
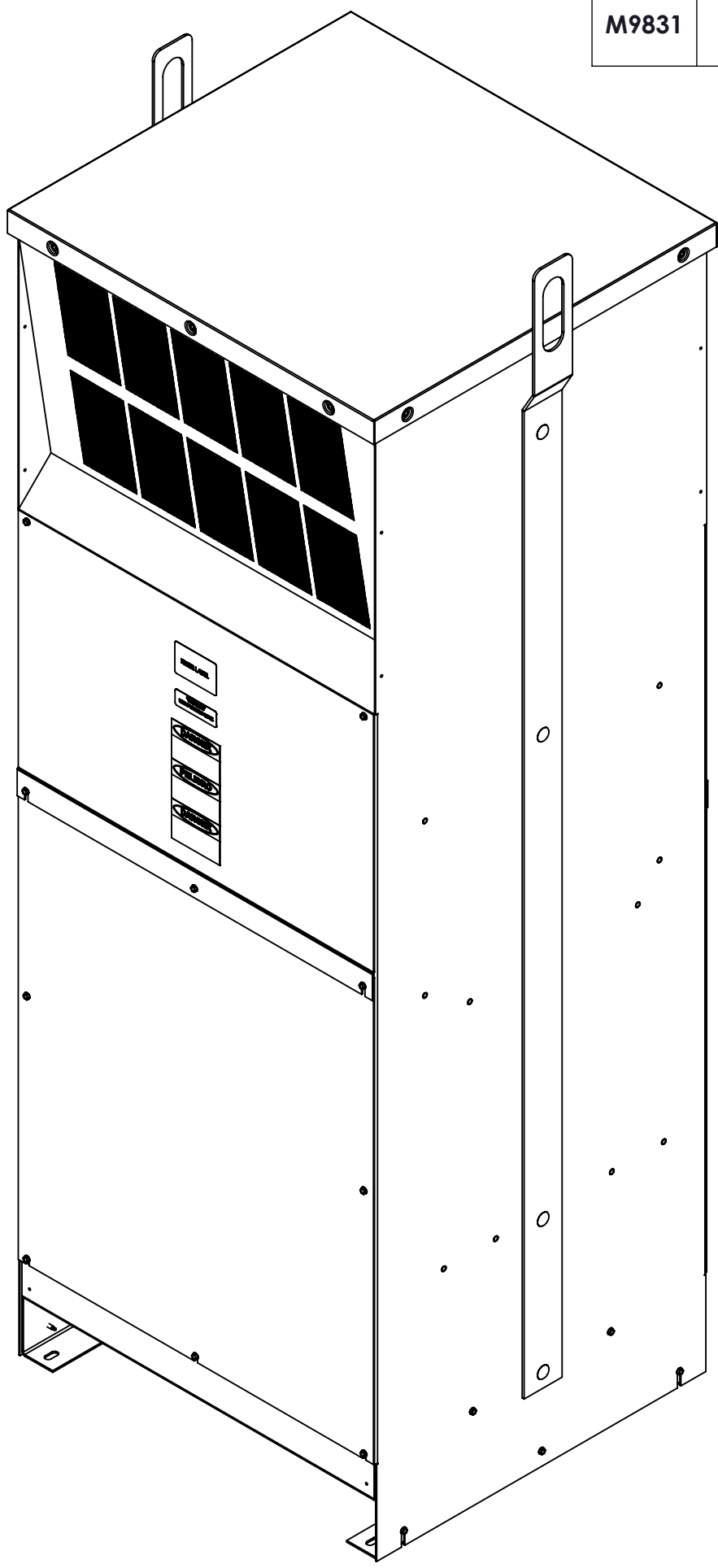
TOP VIEW
(PANELS REMOVED)

$\phi 1.50 [38.10] \times 4.50 [114.30]$
SLOT, 2 PLACES



DETAIL C
CUSTOMER CONNECTION
DETAIL VIEW (THERMAL)

SEE NOTES 1 & 2



CUSTOMER CONNECTION
DETAIL VIEW

NOTES:

1. TERMINAL SCREW TIGHTENING TORQUE: 16 IN/LBS.
2. WIRE RANGE: 4 - 14 AWG.

THE COMPONENT, PART OR ASSEMBLY DESCRIBED IN THIS DOCUMENT MUST COMPLY WITH THE EU(EUROPEAN UNION) DIRECTIVE RoHS2		MATERIAL		CONFIDENTIAL AND PROPRIETARY INFORMATION THIS DOCUMENT CONTAINS CONFIDENTIAL AND PROPRIETARY INFORMATION OF MTE CORPORATION AND MAY NOT BE USED, COPIED OR DISCLOSED TO OTHERS EXCEPT WITH THE AUTHORIZED WRITTEN PERMISSION OF MTE CORPORATION	
CONTAINS <0.1% OF ANY SVHC BY WEIGHT PER REACH REGULATION				DESCRIPTION	
UNLESS OTHERWISE SPECIFIED DIMENSIONS ARE IN INCHES [MM] TOLERANCES ARE: ANGLES: $\pm 1^\circ$ 1 PLACE .X: $\pm .1 [2.5]$ 2 PLACE .XX: $\pm .03 [0.76]$ 3 PLACE .XXX: $\pm .010 [0.254]$		MTE AN BL POWER ELECTRONICS COMPANY N83 W13330 Leon Road Menomonee Falls, WI 53051 USA 800.455-4683 262.253-8200		MATRIX AP 240A 600V 60HZ FILTER, NEMA 1/2 ENCL	
DRAWN MM		DATE 01/02/14		SIZE D	
CHECKED JM		DATE 08/16/16		DWG No. CD MAPG0240E	
APPROVED JM		DATE 08/16/16		REV 05	
SCALE 1:6				SHEET 1 OF 1	