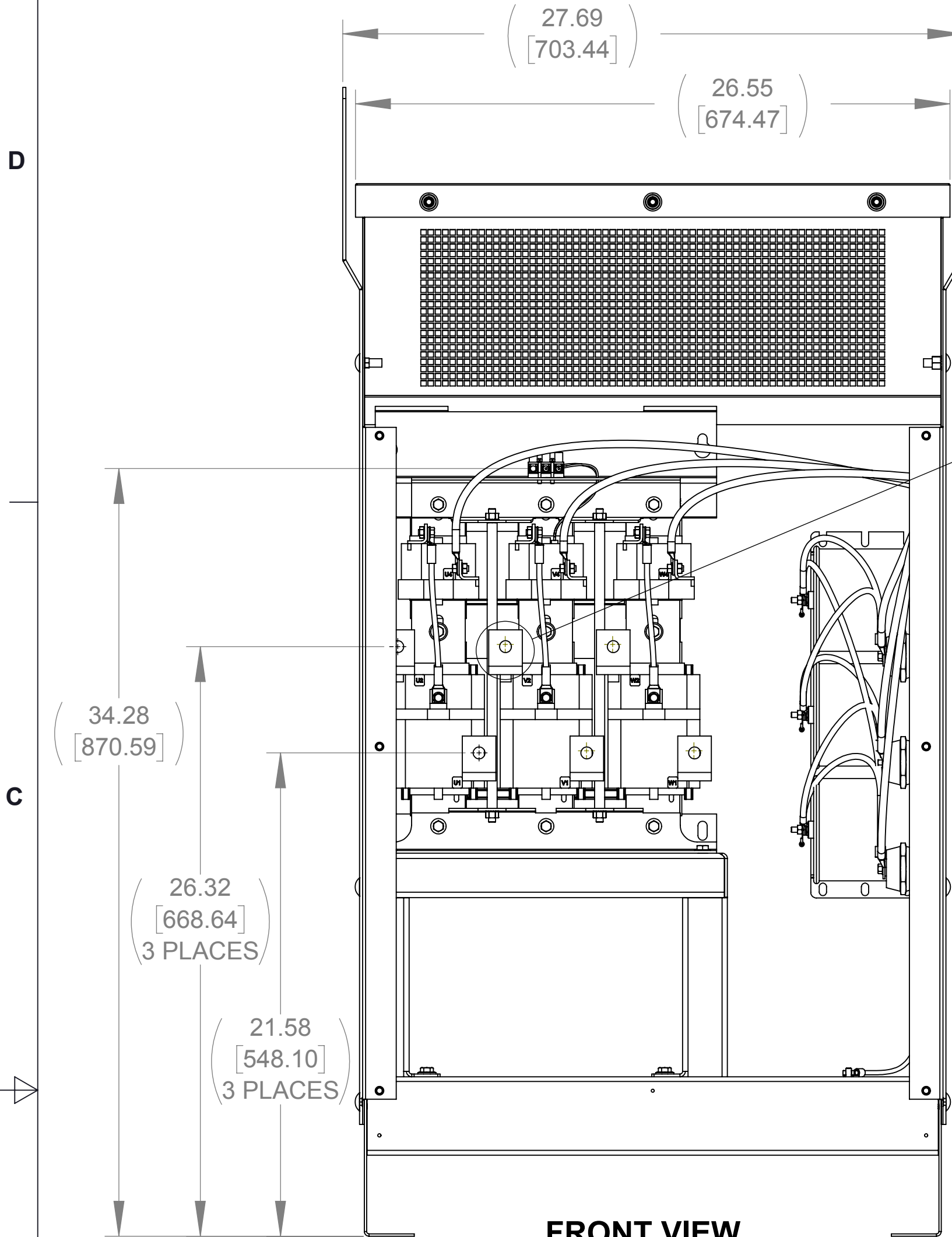
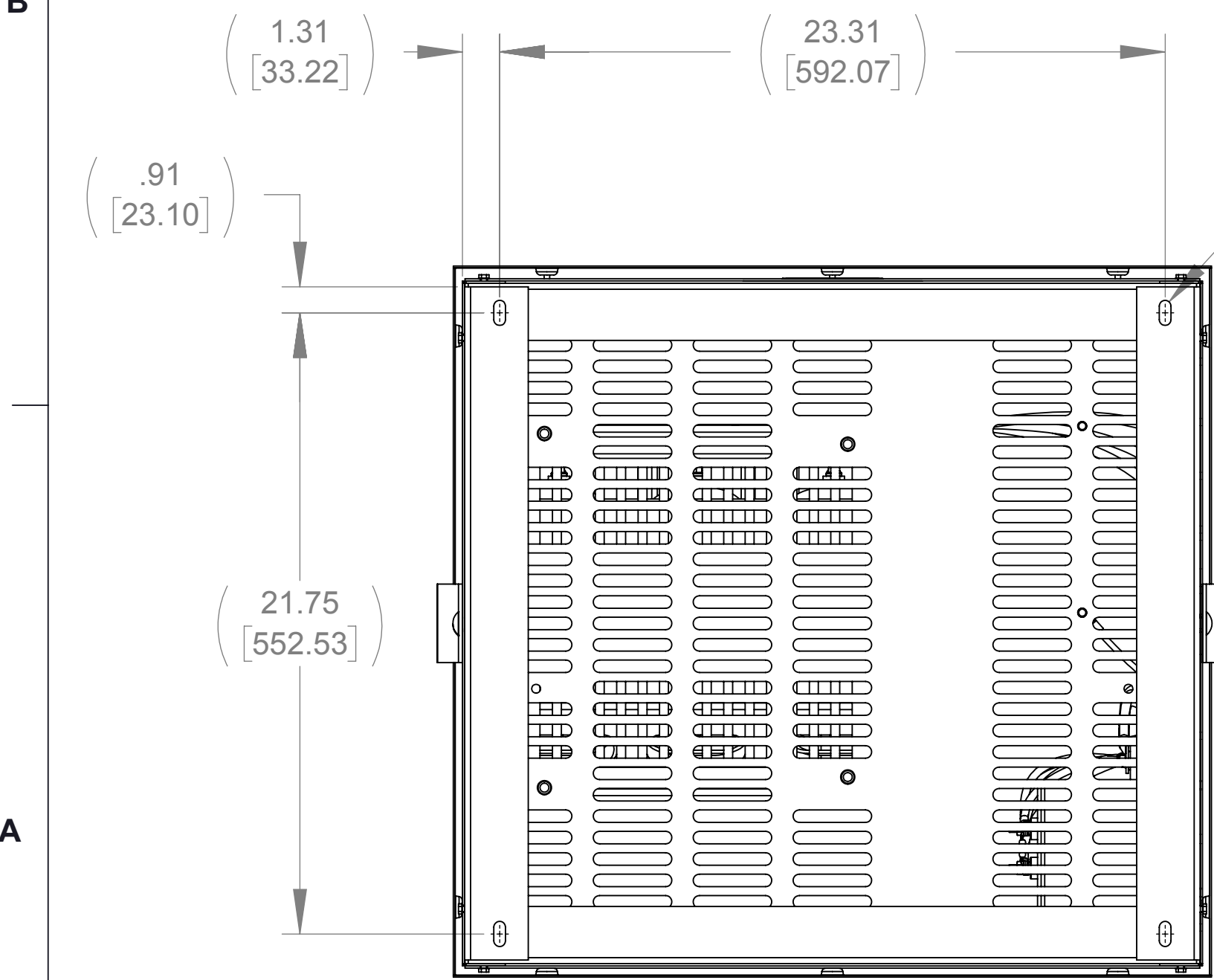


APPROX. WEIGHT (LBS)
488

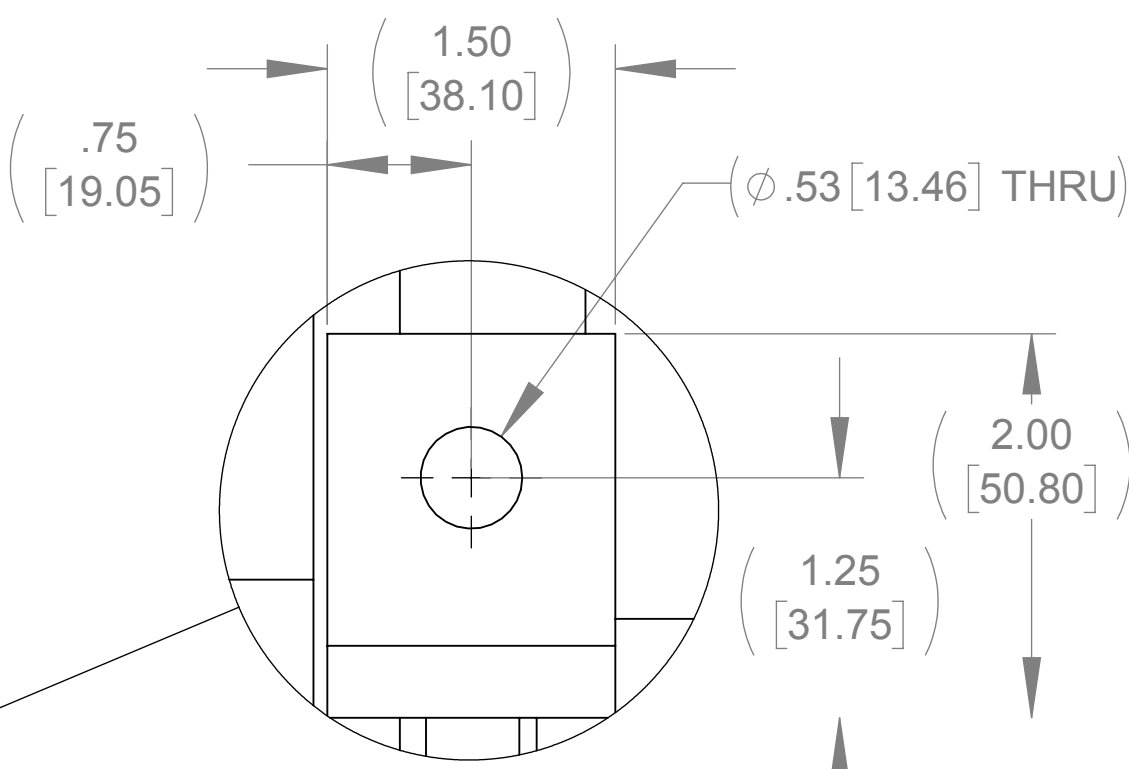
ECO No	DESCRIPTION	REV BY	DATE
M9777	CHANGED CAPPANEL-544 TO 544C	MN	03/17/16



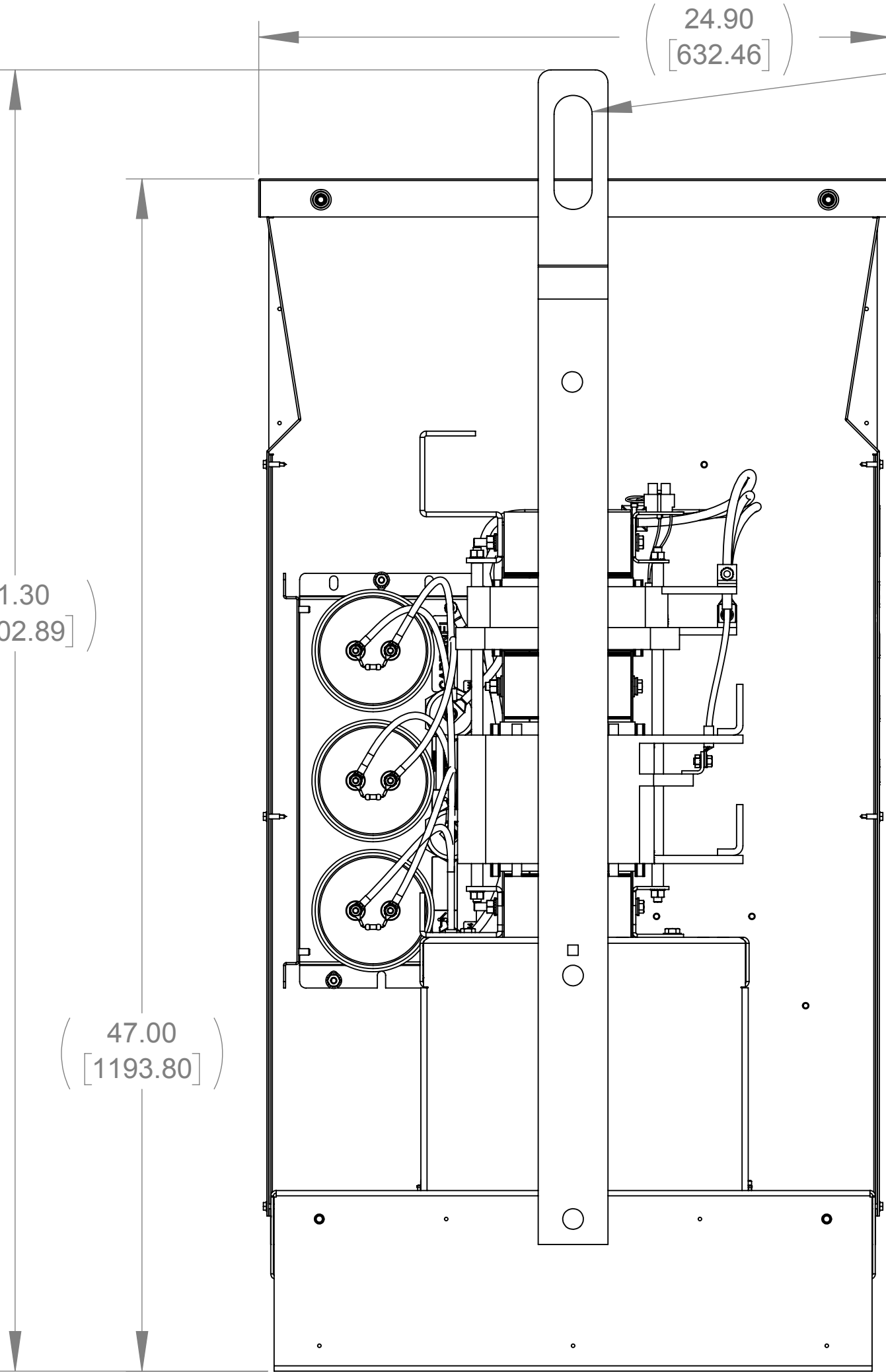
FRONT VIEW
(PANELS REMOVED)



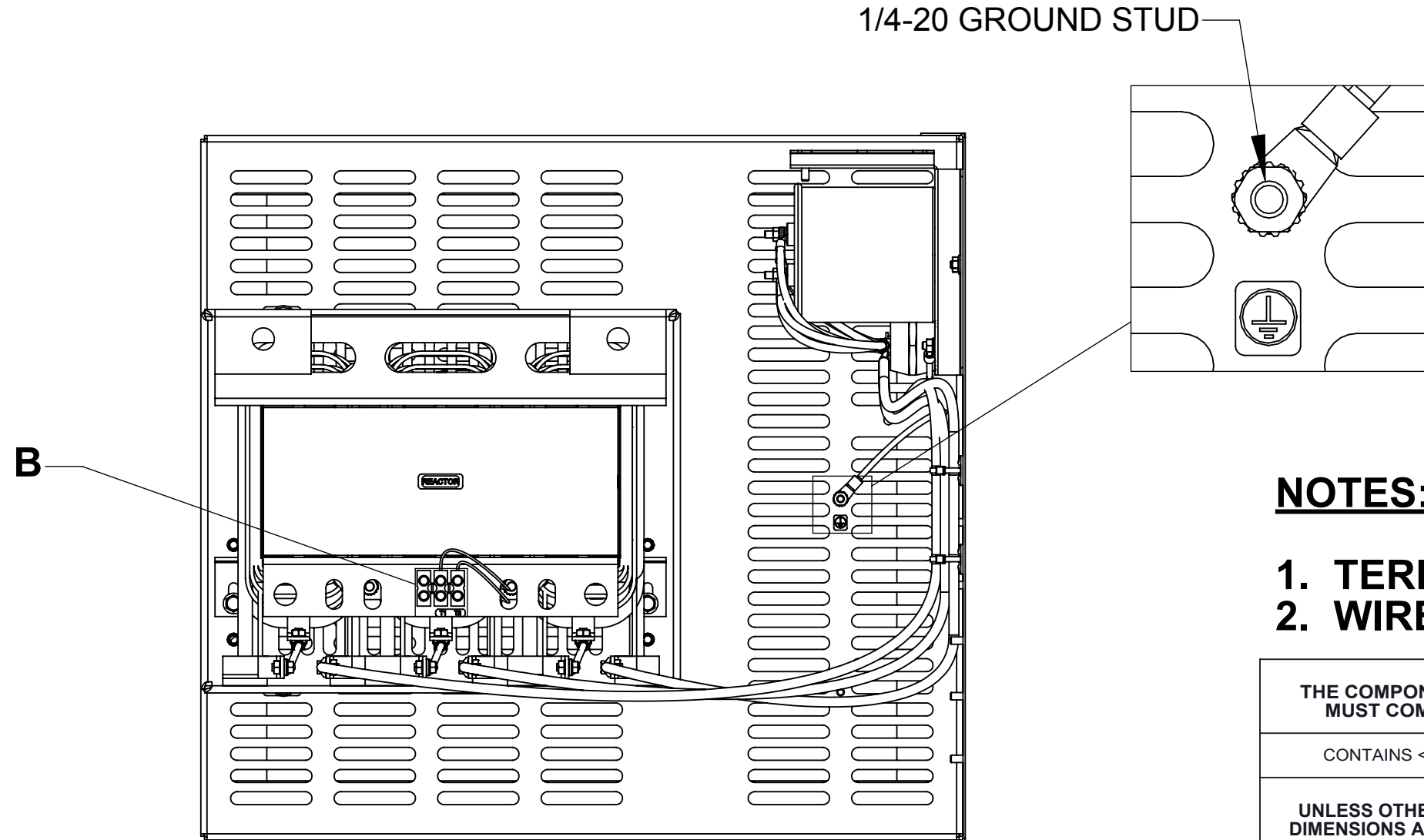
BOTTOM VIEW



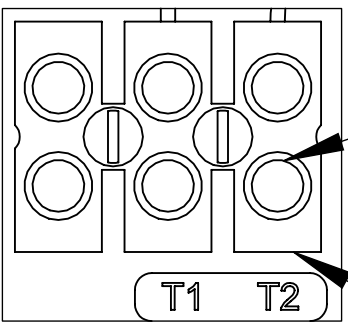
DETAIL A
(6 PLACES)



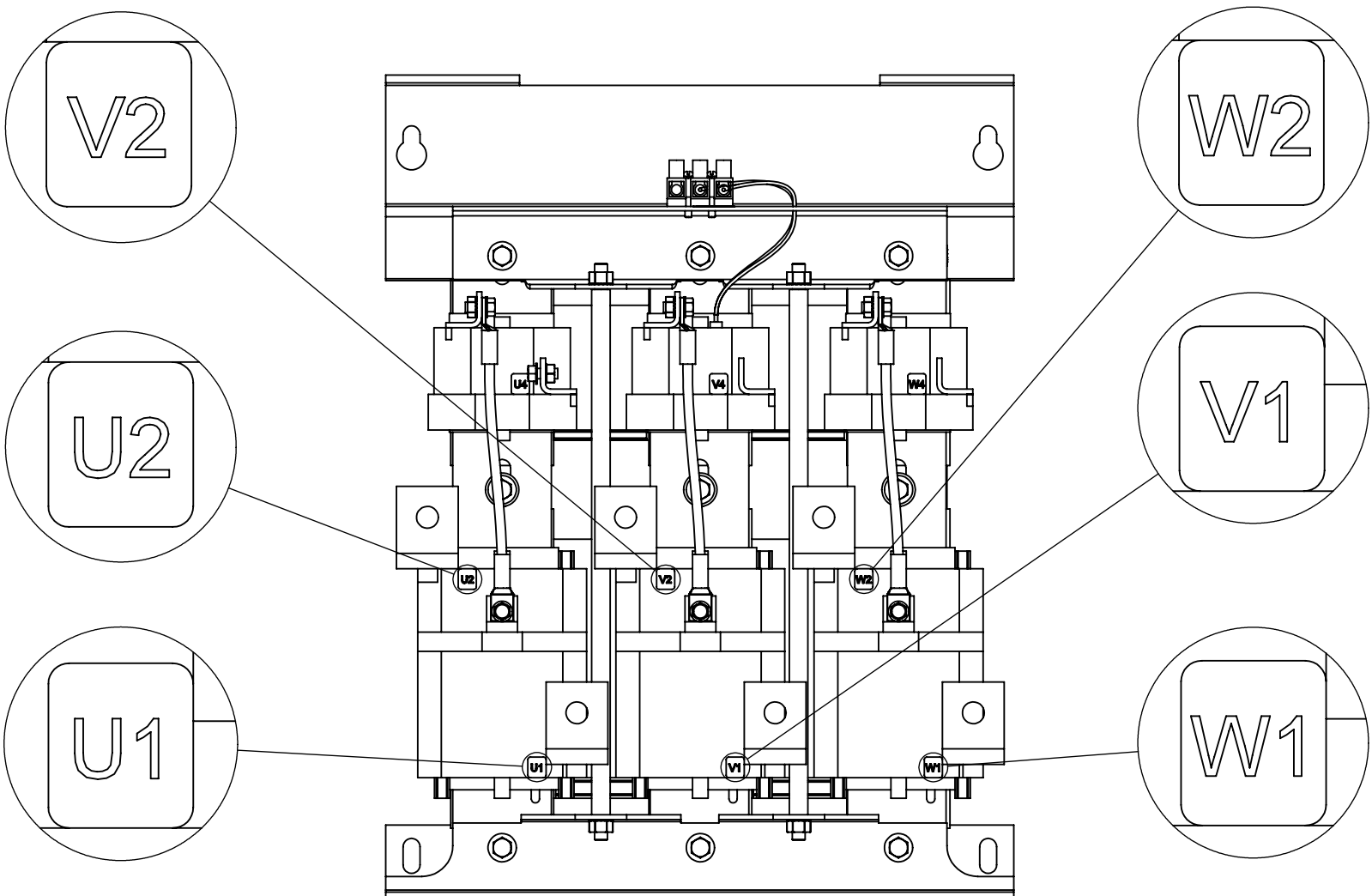
SIDE VIEW
(PANELS REMOVED)



TOP VIEW
(PANELS REMOVED)




DETAIL B
CUSTOMER CONNECTION
DETAIL VIEW (THERMAL)



CUSTOMER CONNECTION
DETAIL VIEW

- NOTES:**
1. TERMINAL SCREW TIGHTENING TORQUE: 16 IN/LBS.
 2. WIRE RANGE: 4 - 14 AWG

THE COMPONENT, PART OR ASSEMBLY DESCRIBED IN THIS DOCUMENT MUST COMPLY WITH THE EU(EUROPEAN UNION) DIRECTIVE RoHS2		MATERIAL		CONFIDENTIAL AND PROPRIETARY INFORMATION THIS DOCUMENT CONTAINS CONFIDENTIAL AND PROPRIETARY INFORMATION OF MTE CORPORATION AND MAY NOT BE USED, COPIED OR DISCLOSED TO OTHERS EXCEPT WITH THE AUTHORIZED WRITTEN PERMISSION OF MTE CORPORATION				
CONTAINS <0.1% OF ANY SVHC BY WEIGHT PER REACH REGULATION								
<div>UNLESS OTHERWISE SPECIFIED DIMENSIONS ARE IN INCHES [MM] TOLERANCES ARE:</div> <div>ANGLES: ± 1 °</div> <div>1 PLACE .X: ± .1 [2.5]</div> <div>2 PLACE .XX: ± .03 [0.76]</div> <div>3 PLACE .XXX: ± .010 [0.254]</div> <div><div>N83 W13330 Leon Road Menomonee Falls, WI 53051 USA 800.455-4683 262.253-8200</div></div>		DRAWN		DATE		DESCRIPTION MATRIX AP 240A 480V 60HZ FILTER, NEMA 1/2 ENCL		
		SG		09/06/11				
		CHECKED		DATE				
		JM		04/18/16				
		APPROVED		DATE				
		JM		04/18/16		SIZE	DWG No.	REV
						D	CD MAPG0240D	02
						SCALE	1:5	SHEET 1 OF 1