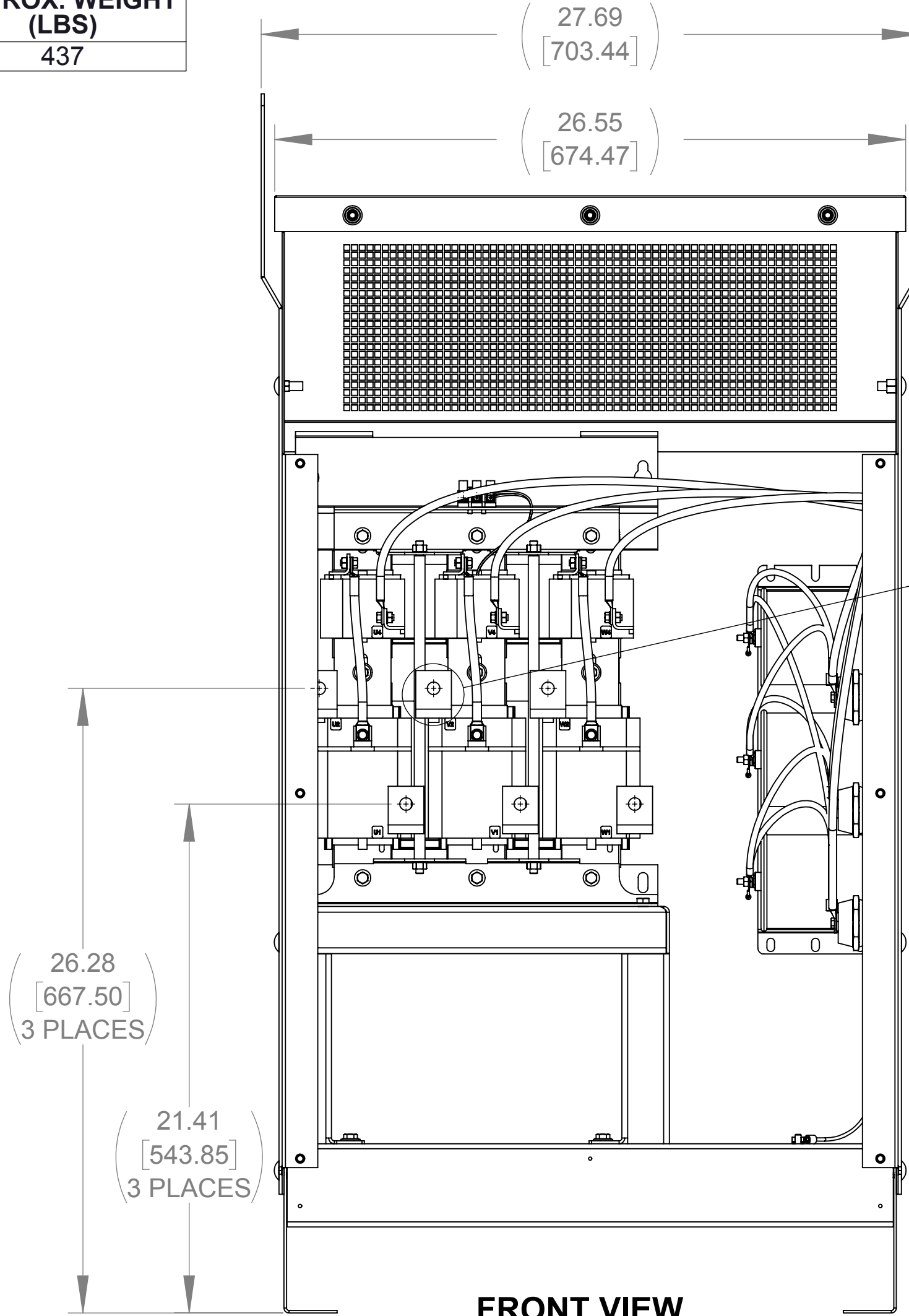
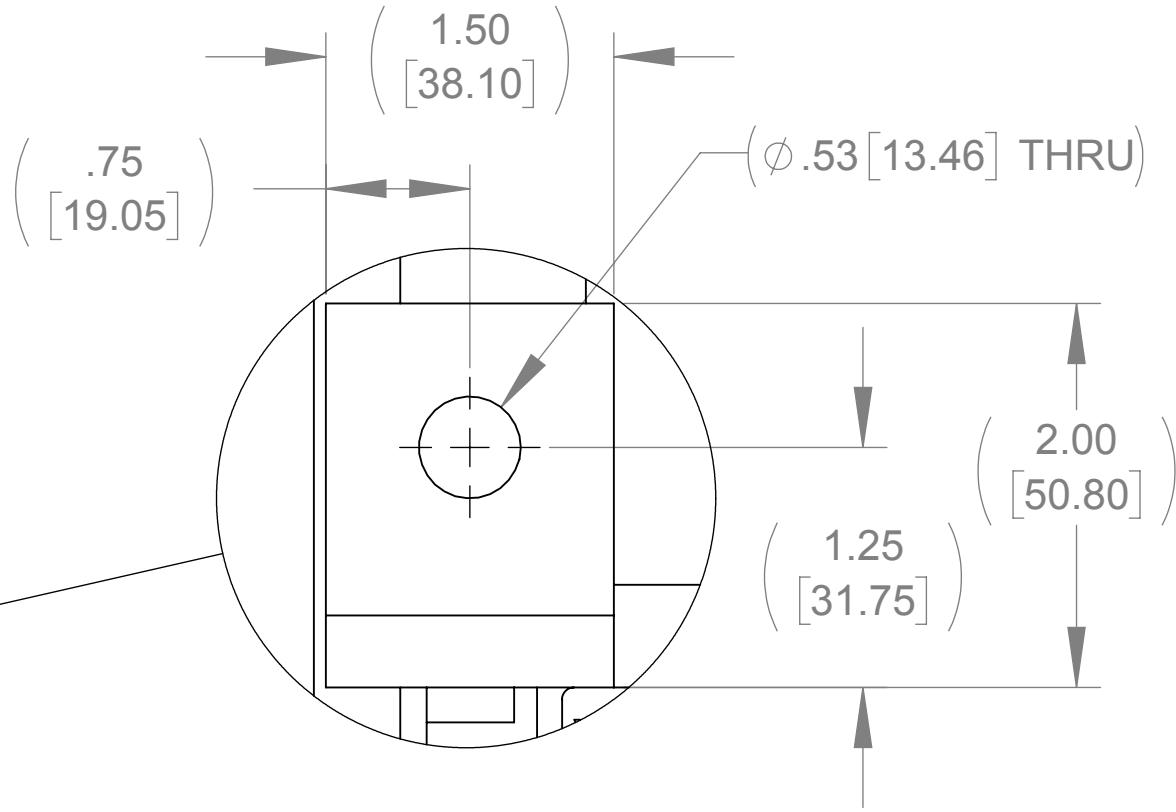


APPROX. WEIGHT
(LBS)
437

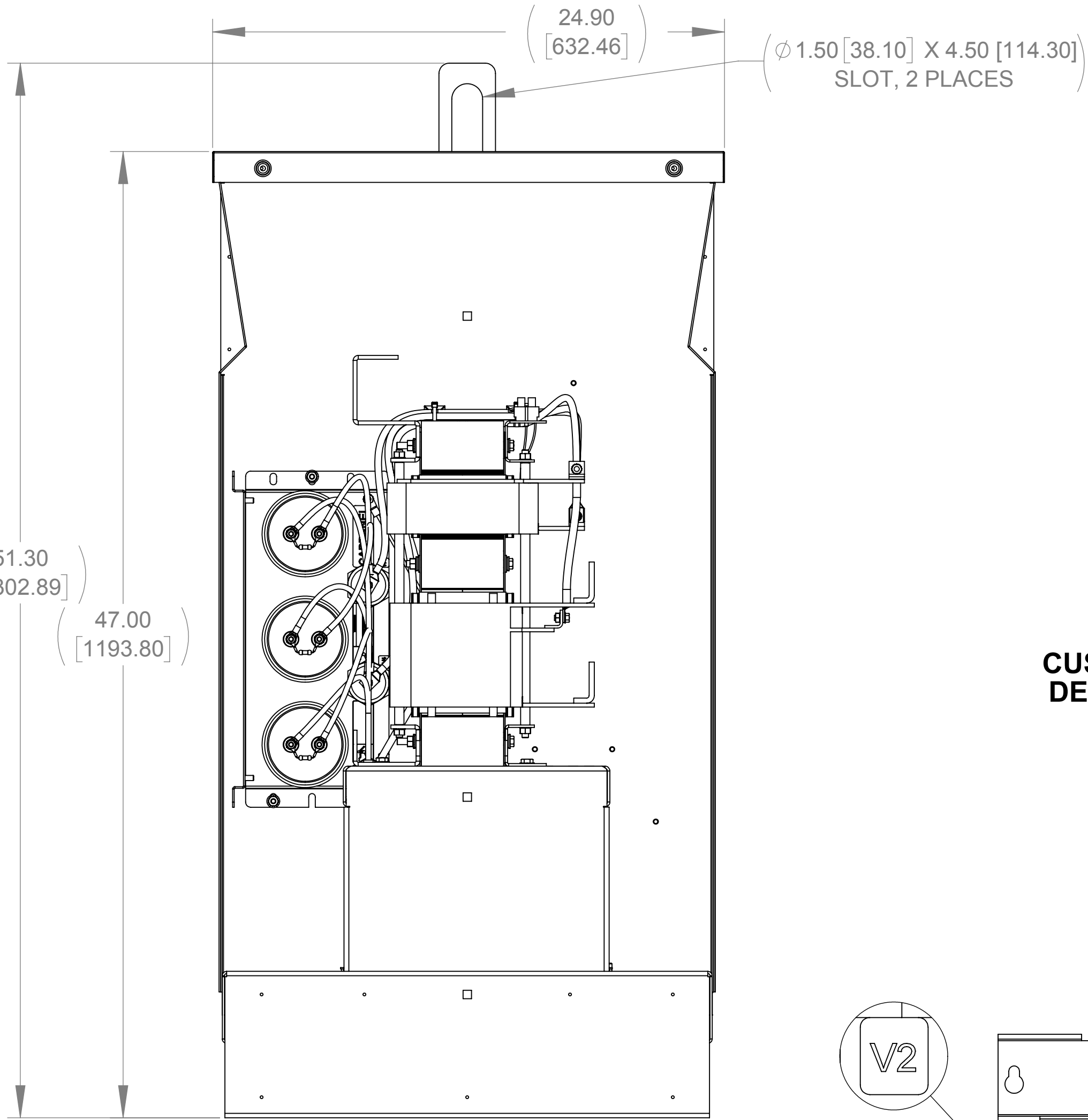
ECO No	DESCRIPTION	REV BY	DATE
M9814	REPLACED CAPPANEL-557 WITH CAPPANEL-557C	KV	09/14/16



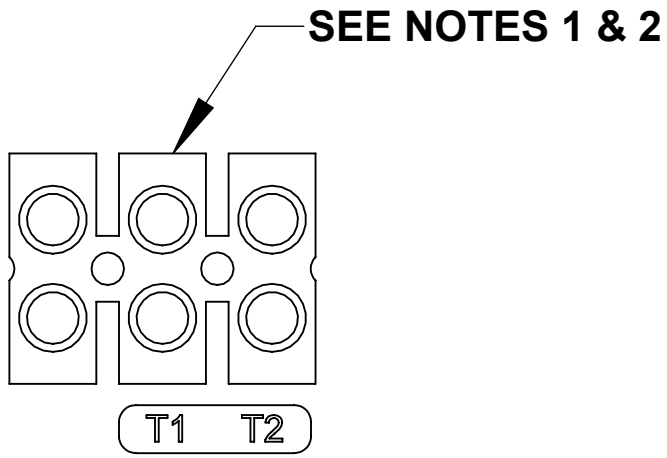
FRONT VIEW
(WITH PANELS REMOVED)



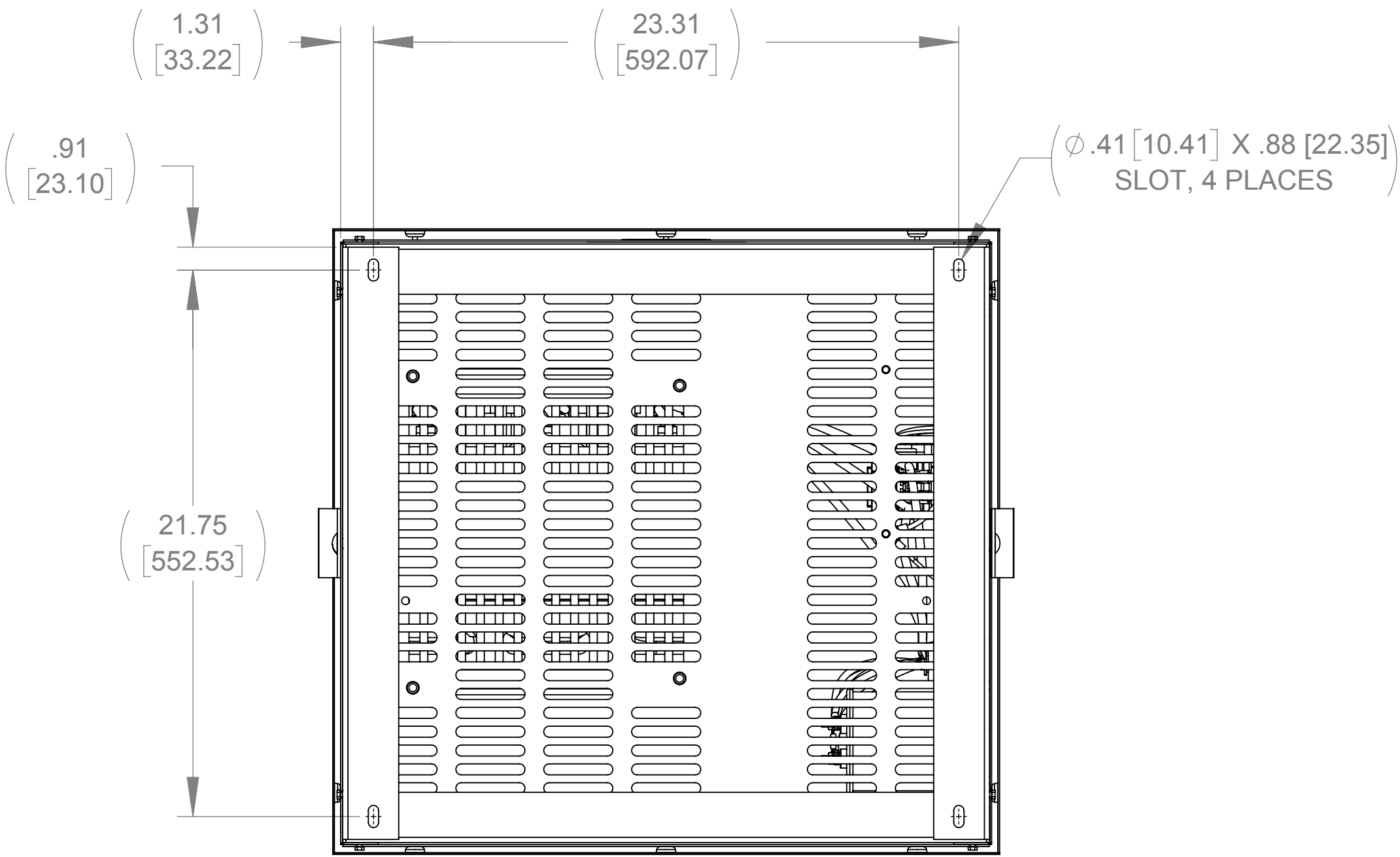
DETAIL A
(6 PLACES)



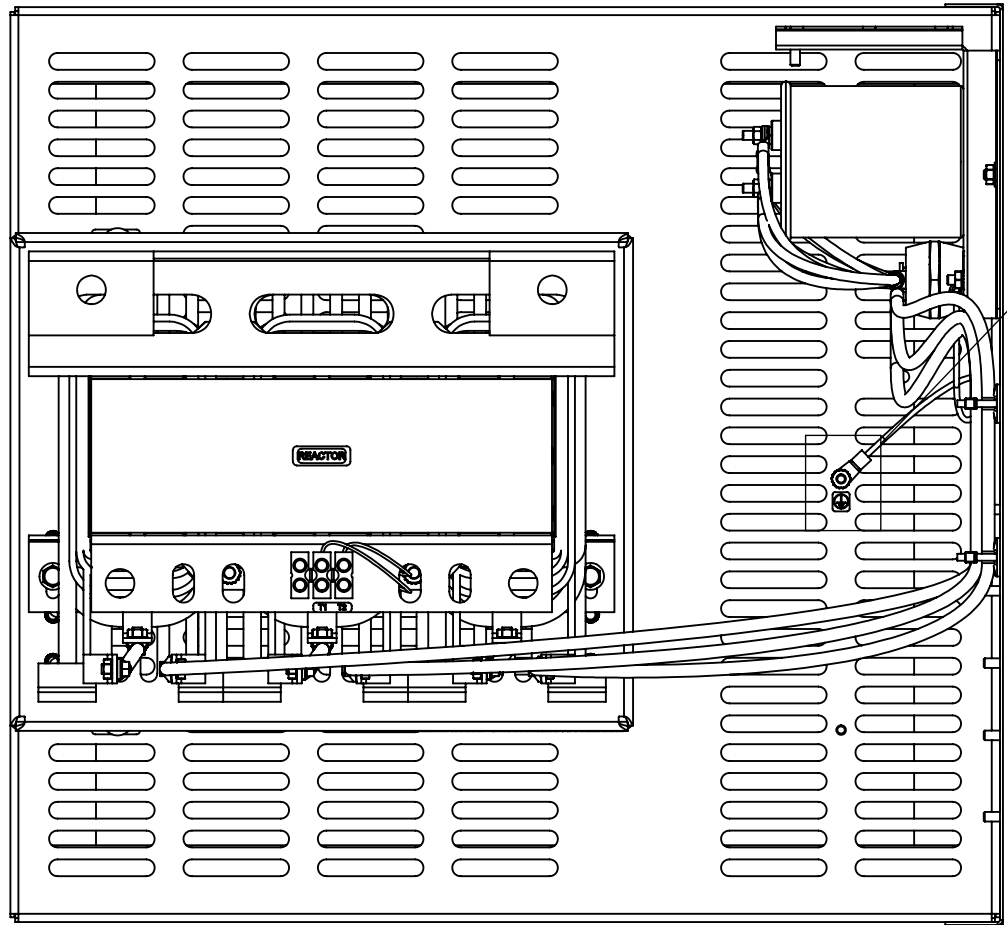
SIDE VIEW
(WITH PANELS REMOVED)



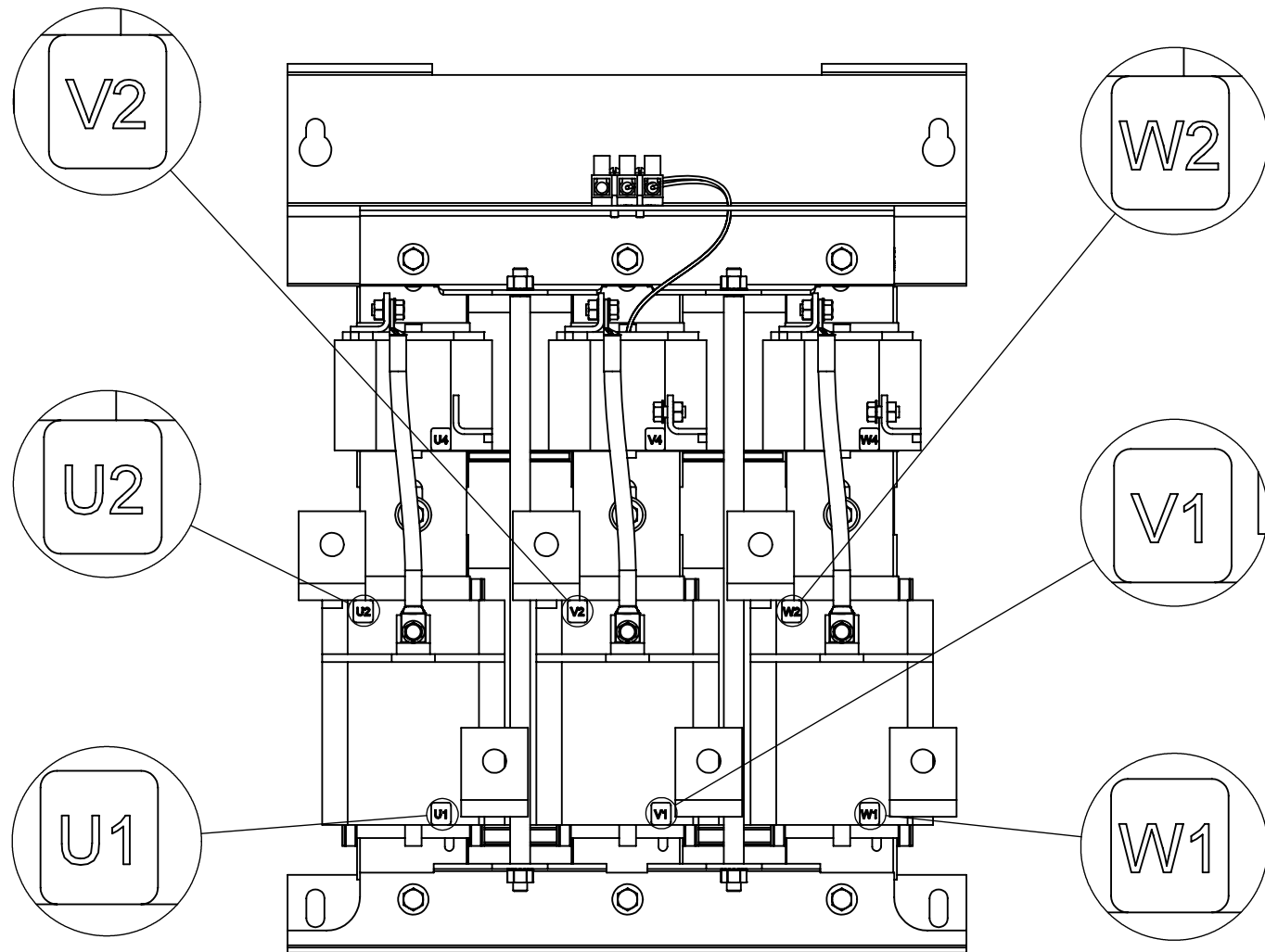
CUSTOMER CONNECTION
DETAIL VIEW (THERMAL)



BOTTOM VIEW



TOP VIEW
(TOP PANEL AND CAPPANEL REMOVED)



CUSTOMER CONNECTION
DETAIL VIEW

NOTES:

1. TERMINAL SCREW TIGHTENING TORQUE: 16 IN/LBS
2. WIRE RANGE: 4 - 14 AWG

THE COMPONENT, PART OR ASSEMBLY DESCRIBED IN THIS DOCUMENT MUST COMPLY WITH THE EU(EUROPEAN UNION) DIRECTIVE RoHS2		MATERIAL		CONFIDENTIAL AND PROPRIETARY INFORMATION THIS DOCUMENT CONTAINS CONFIDENTIAL AND PROPRIETARY INFORMATION OF MTE CORPORATION AND MAY NOT BE USED, COPIED OR DISCLOSED TO OTHERS EXCEPT WITH THE AUTHORIZED WRITTEN PERMISSION OF MTE CORPORATION			
CONTAINS <0.1% OF ANY SVHC BY WEIGHT PER REACH REGULATION							
<div>UNLESS OTHERWISE SPECIFIED DIMENSIONS ARE IN INCHES [MM] TOLERANCES ARE:</div> <div>ANGLES: ± 1 °</div> <div>1 PLACE .X: ± .1 [2.5]</div> <div>2 PLACE .XX: ± .03 [0.76]</div> <div>3 PLACE .XXX: ± .010 [0.254]</div> <div><div><div>MTE</div><div>POWER QUALITY. SOLVED.</div></div><div>N83 W13330 Leon Road Menomonee Falls, WI 53051 USA 800.455-4683 262.253-8200</div></div>		DRAWN		DATE		DESCRIPTION <div>MATRIX AP 165A 480V 60HZ FILTER, NEMA 1/2 ENCL</div>	
		SG		09/14/11			
		CHECKED		DATE			
		JM		09/19/16			
		APPROVED		DATE		SIZE	
		JM		09/19/16		D	
						DWG No.	
						CD MAPG0165D	
						REV	
						02	
						SCALE	
						1:5	
						SHEET 1 OF 1	