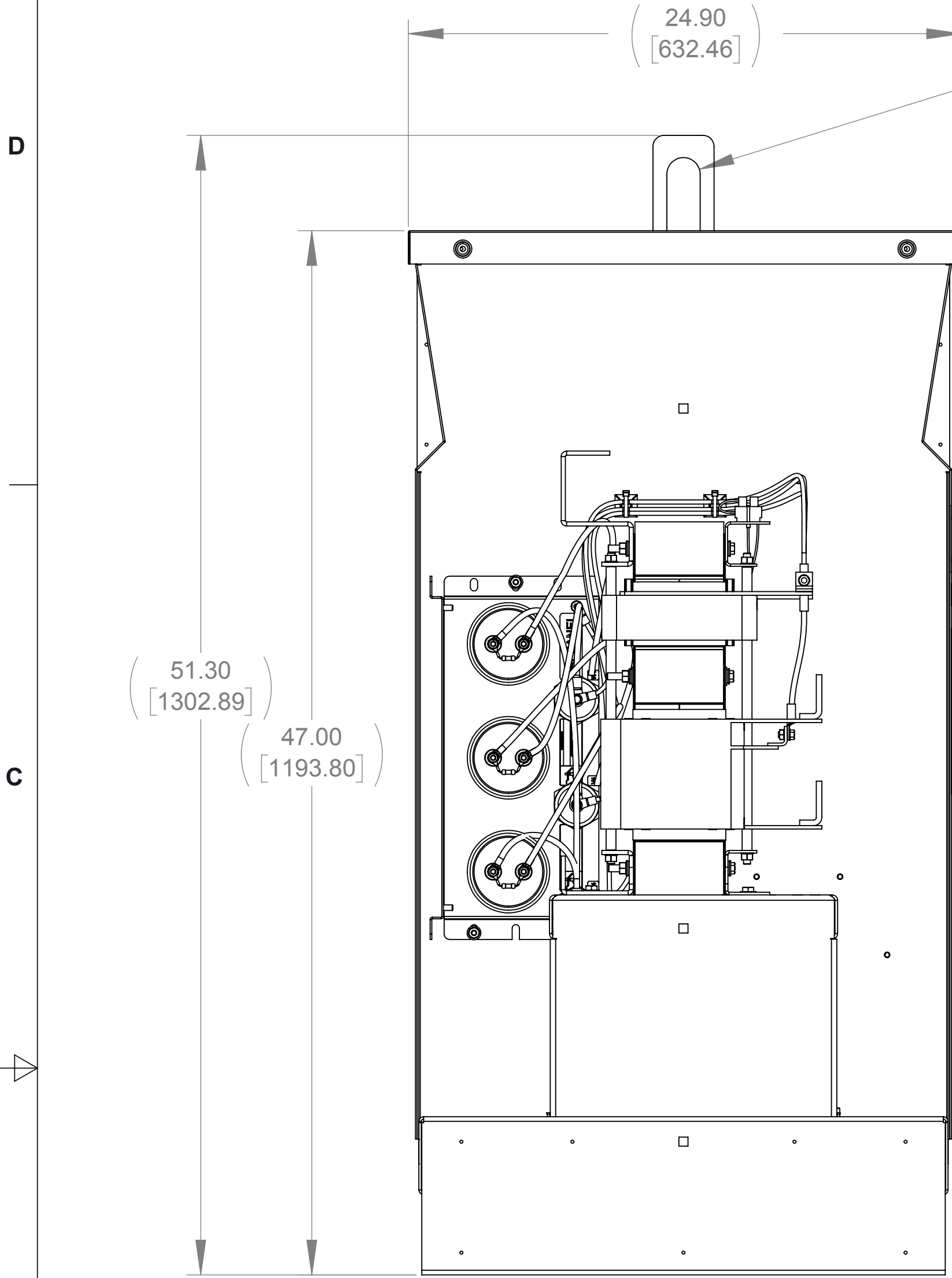
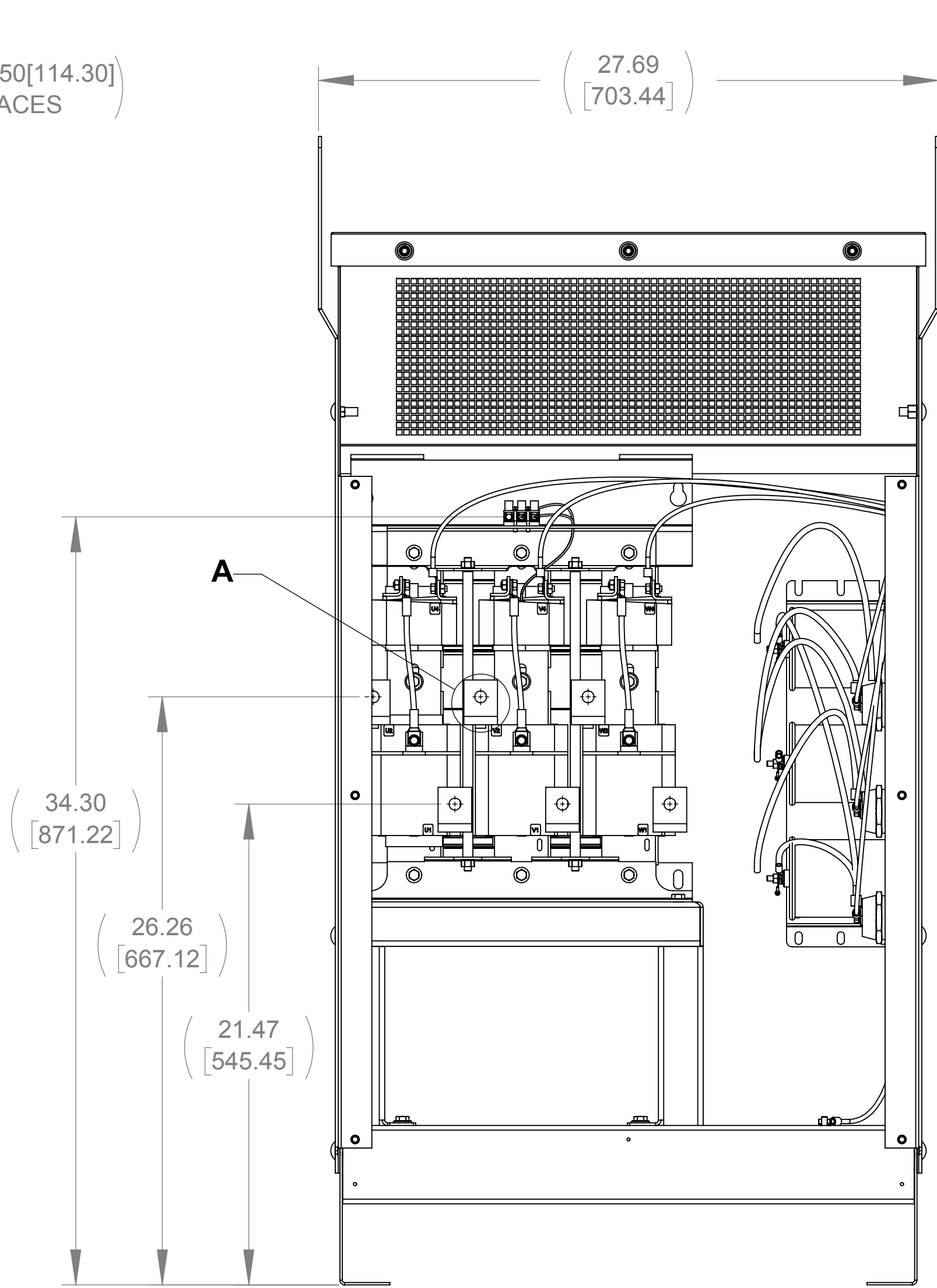


APPROX. WEIGHT (LBS)
436

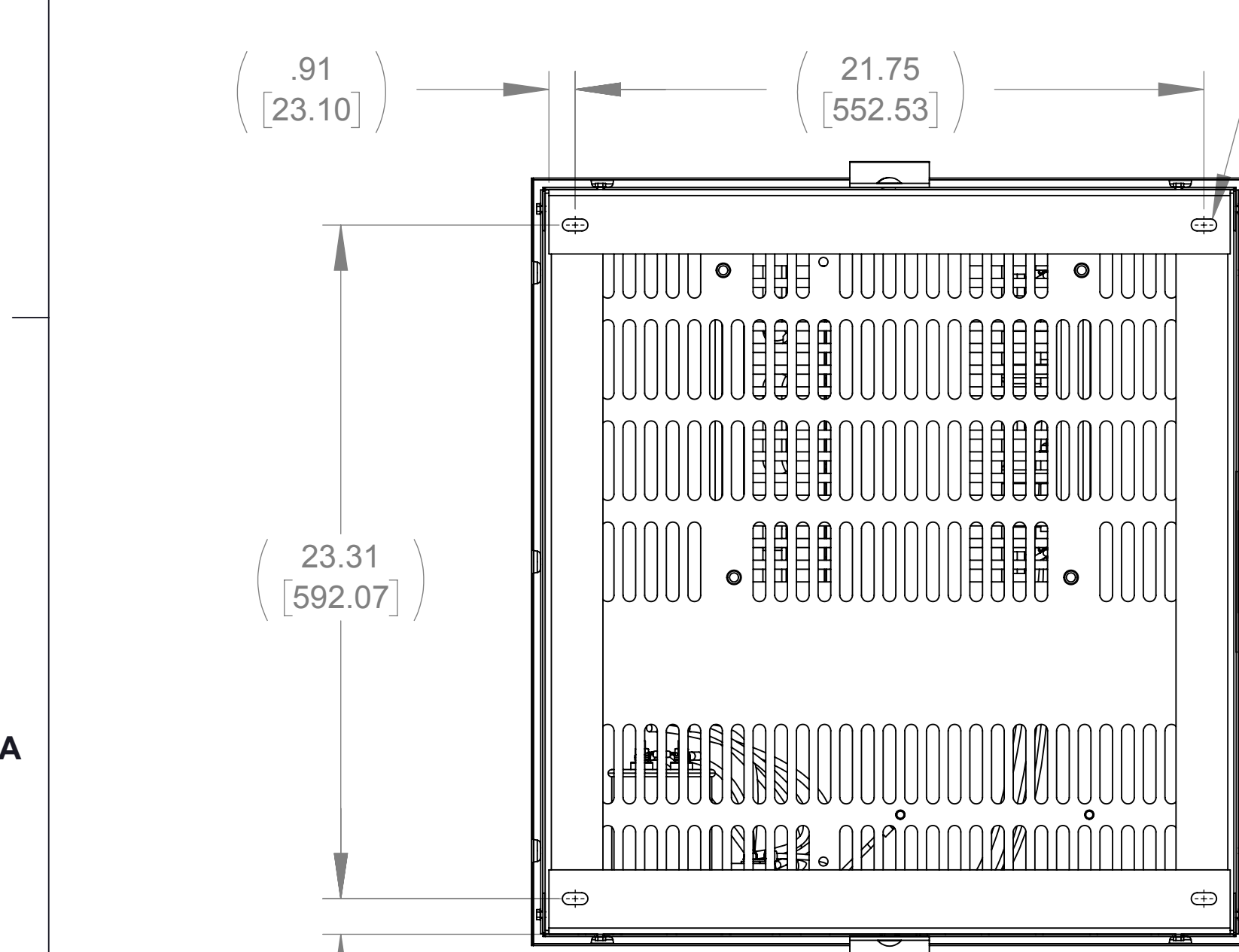
ECO No	DESCRIPTION	REV BY	DATE
M9806	CHANGED CAPPANEL-568 TO 568C	MN	04/13/16



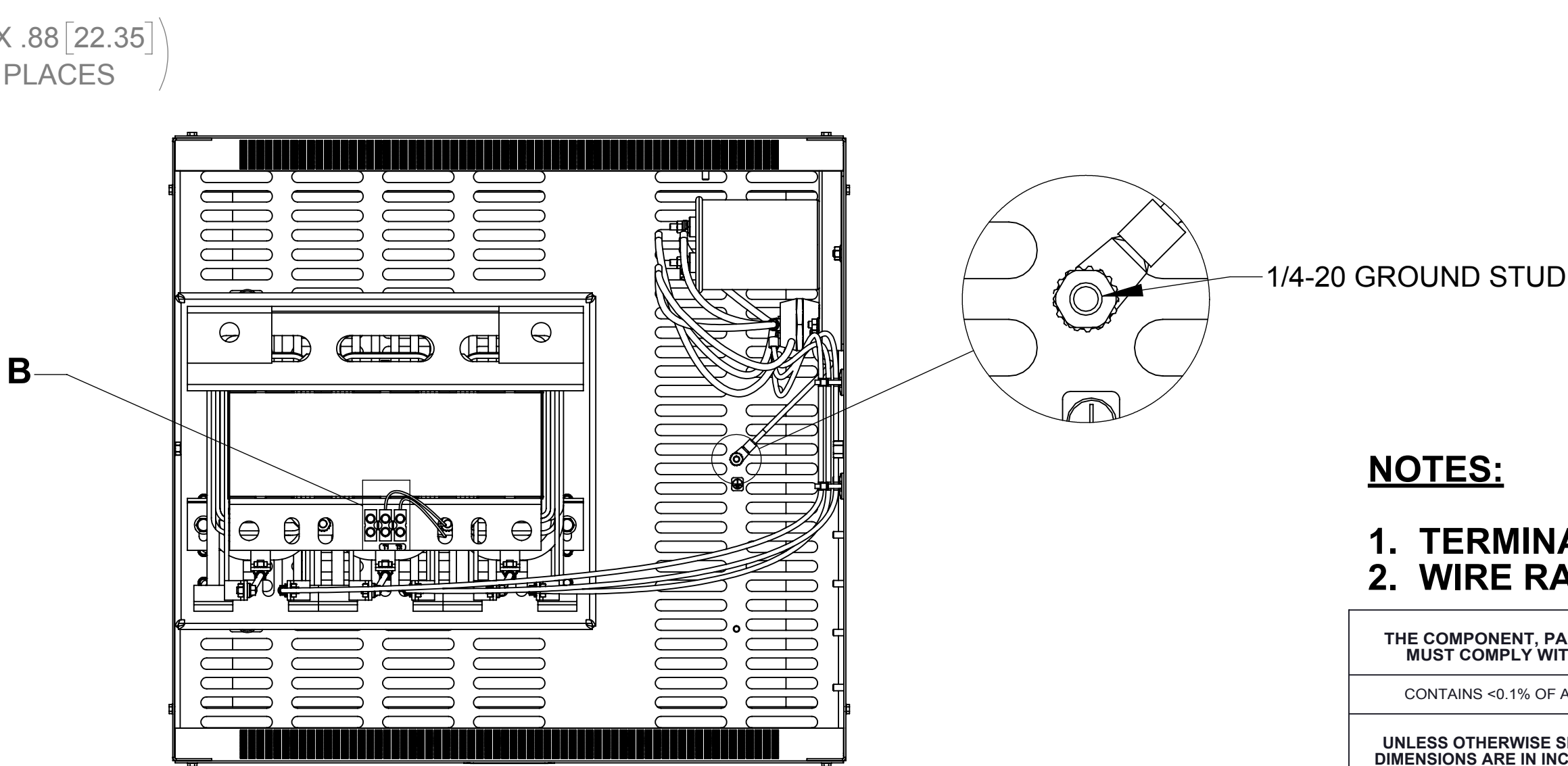
SIDE VIEW
(PANELS REMOVED)



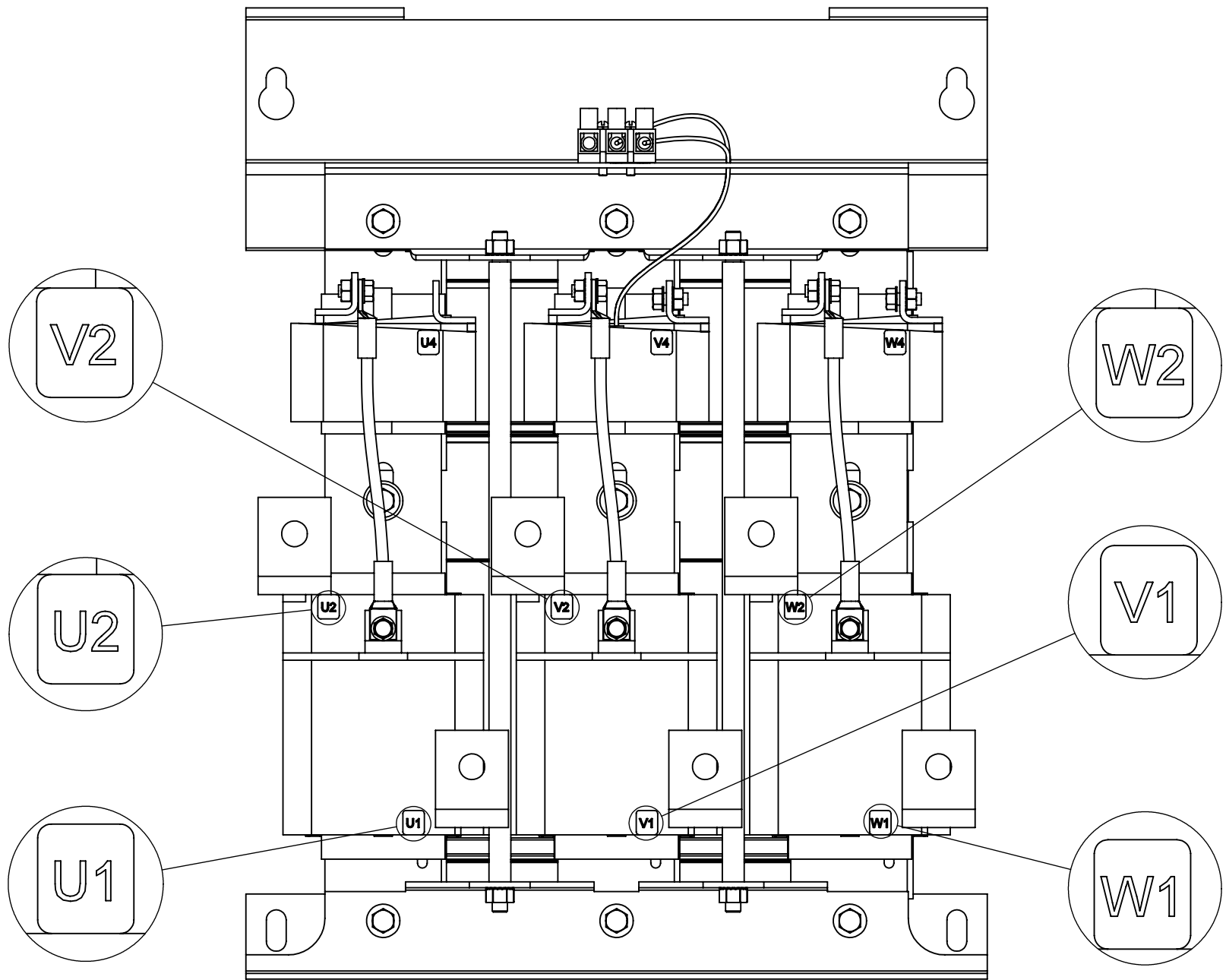
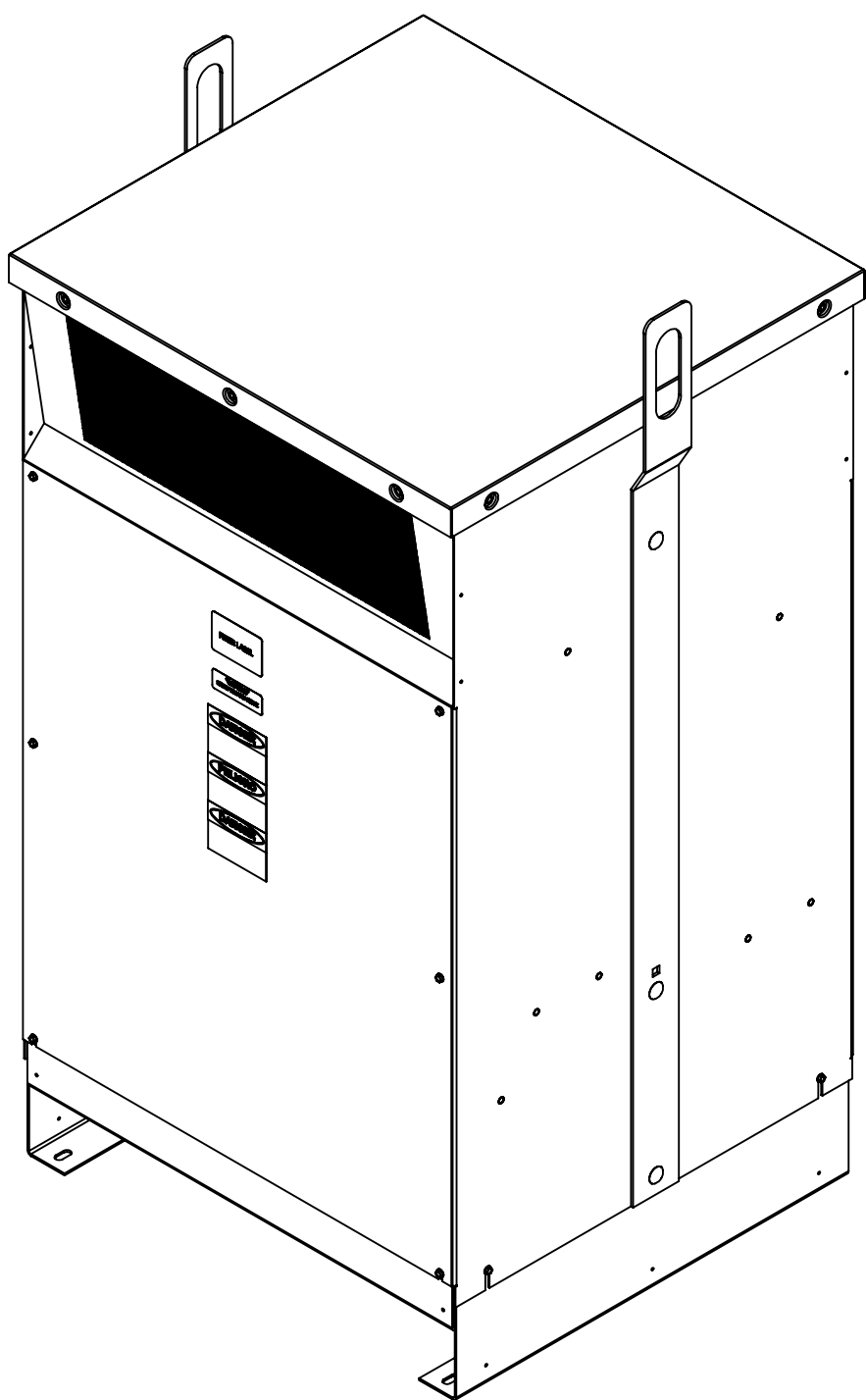
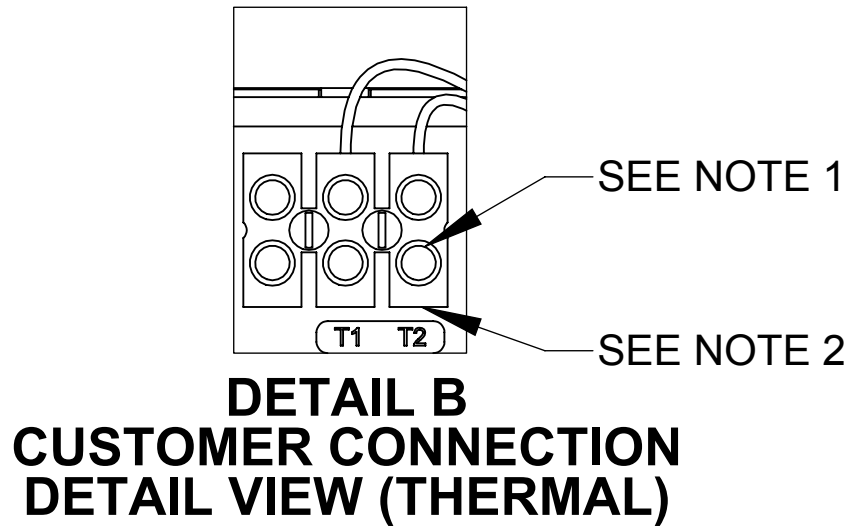
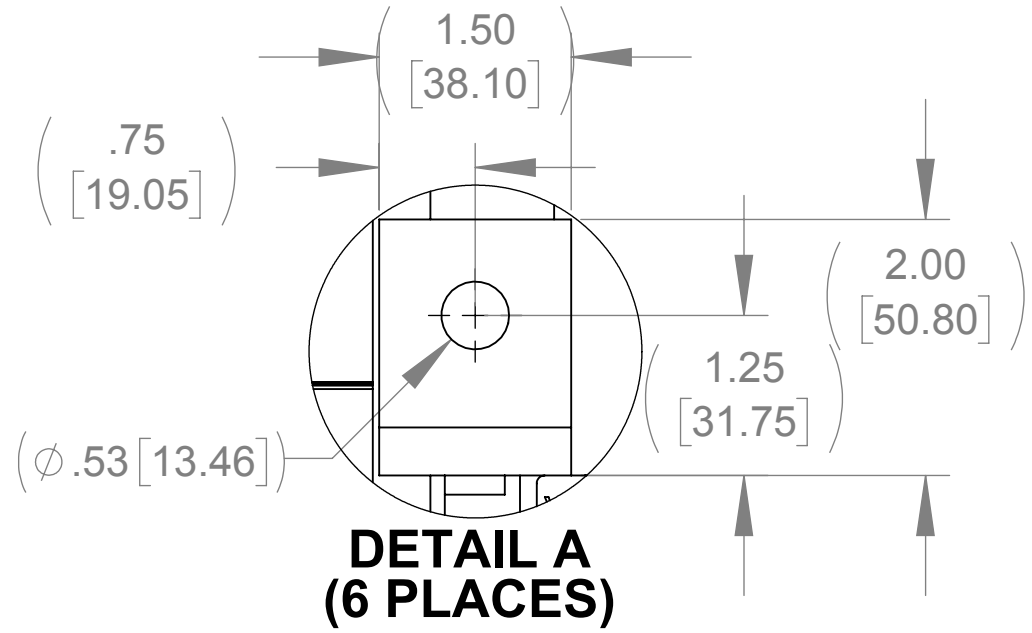
FRONT VIEW
(PANELS REMOVED)



BOTTOM VIEW



TOP VIEW
(PANELS REMOVED)



NOTES:

1. TERMINAL SCREW TIGHTENING TORQUE: 16 IN/LBS.
2. WIRE RANGE: 4-14 AWG.

THE COMPONENT, PART OR ASSEMBLY DESCRIBED IN THIS DOCUMENT MUST COMPLY WITH THE EU(EUROPEAN UNION) DIRECTIVE RoHS2		MATERIAL		CONFIDENTIAL AND PROPRIETARY INFORMATION THIS DOCUMENT CONTAINS CONFIDENTIAL AND PROPRIETARY INFORMATION OF MTE CORPORATION AND MAY NOT BE USED, COPIED OR DISCLOSED TO OTHERS EXCEPT WITH THE AUTHORIZED WRITTEN PERMISSION OF MTE CORPORATION		
CONTAINS <0.1% OF ANY SVHC BY WEIGHT PER REACH REGULATION						
<div>UNLESS OTHERWISE SPECIFIED DIMENSIONS ARE IN INCHES [MM] TOLERANCES ARE:</div> <div>ANGLES: ± 1 °</div> <div>1 PLACE .X: ± .1 [2.5]</div> <div>2 PLACE .XX: ± .03 [0.76]</div> <div>3 PLACE .XXX: ± .010 [0.254]</div> <div><div><div>MTE</div><div>AN BL POWER ELECTRONICS COMPANY</div></div><div>N83 W13330 Leon Road Menomonee Falls, WI 53051 USA 800.455-4683 262.253-8200</div></div>		DRAWN	DATE	DESCRIPTION MATRIX AP 128A 600V 60HZ FILTER, NEMA 1/2 ENCLOSURE		
		SU	05/01/13			
		CHECKED	DATE	SIZE D DWG No CD MAPG0128E REV 04		
		JM	06/01/16			
		APPROVED	DATE			
		JM	06/01/16	SCALE 1:5	SHEET 1 OF 1	