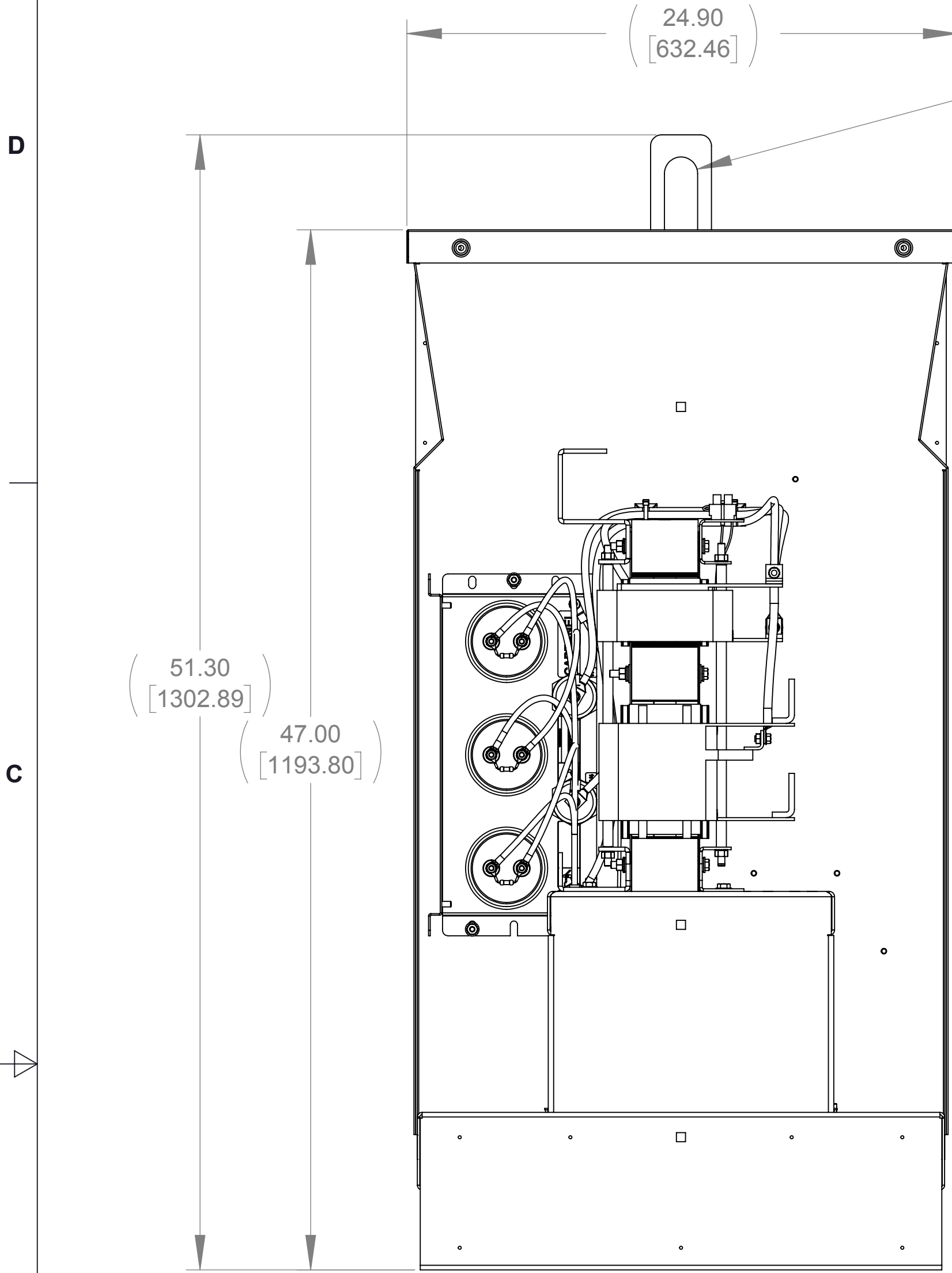
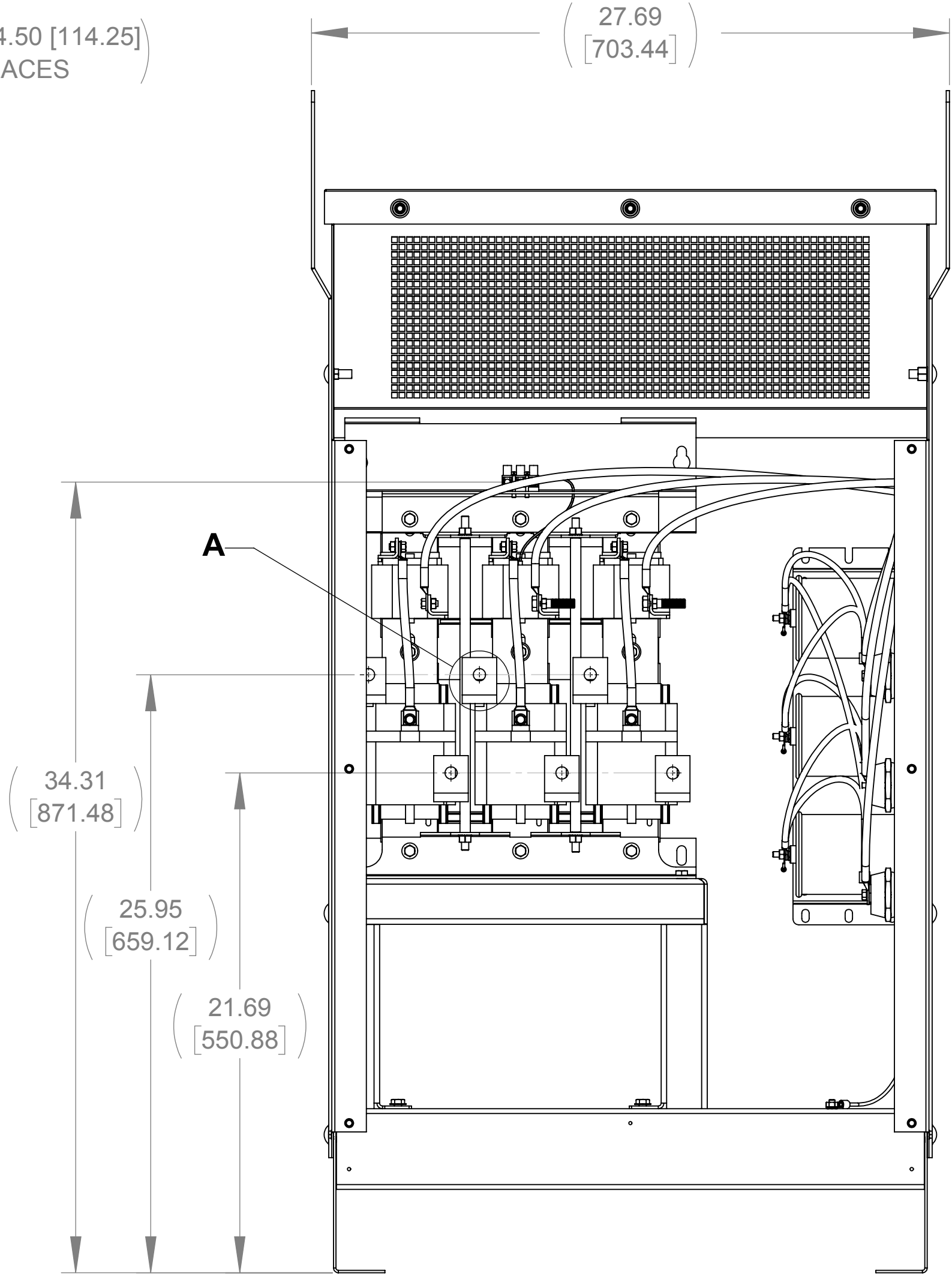


APPROX. WEIGHT
(LBS)
370

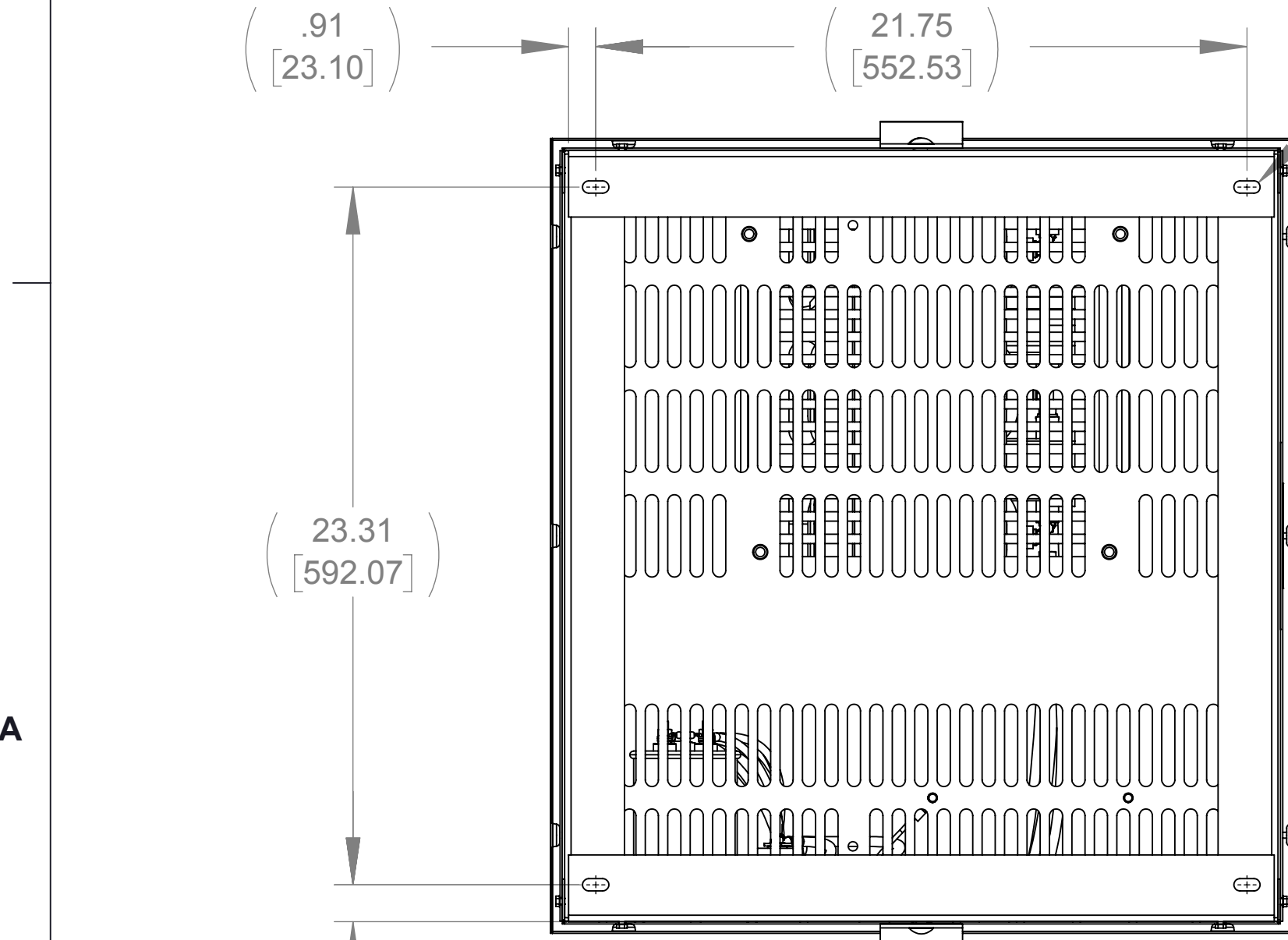
ECO No	DESCRIPTION	REV BY	DATE
M9917	REPLACED CAPPANEL-555 WITH CAPPANEL-555C	SL	11/01/16



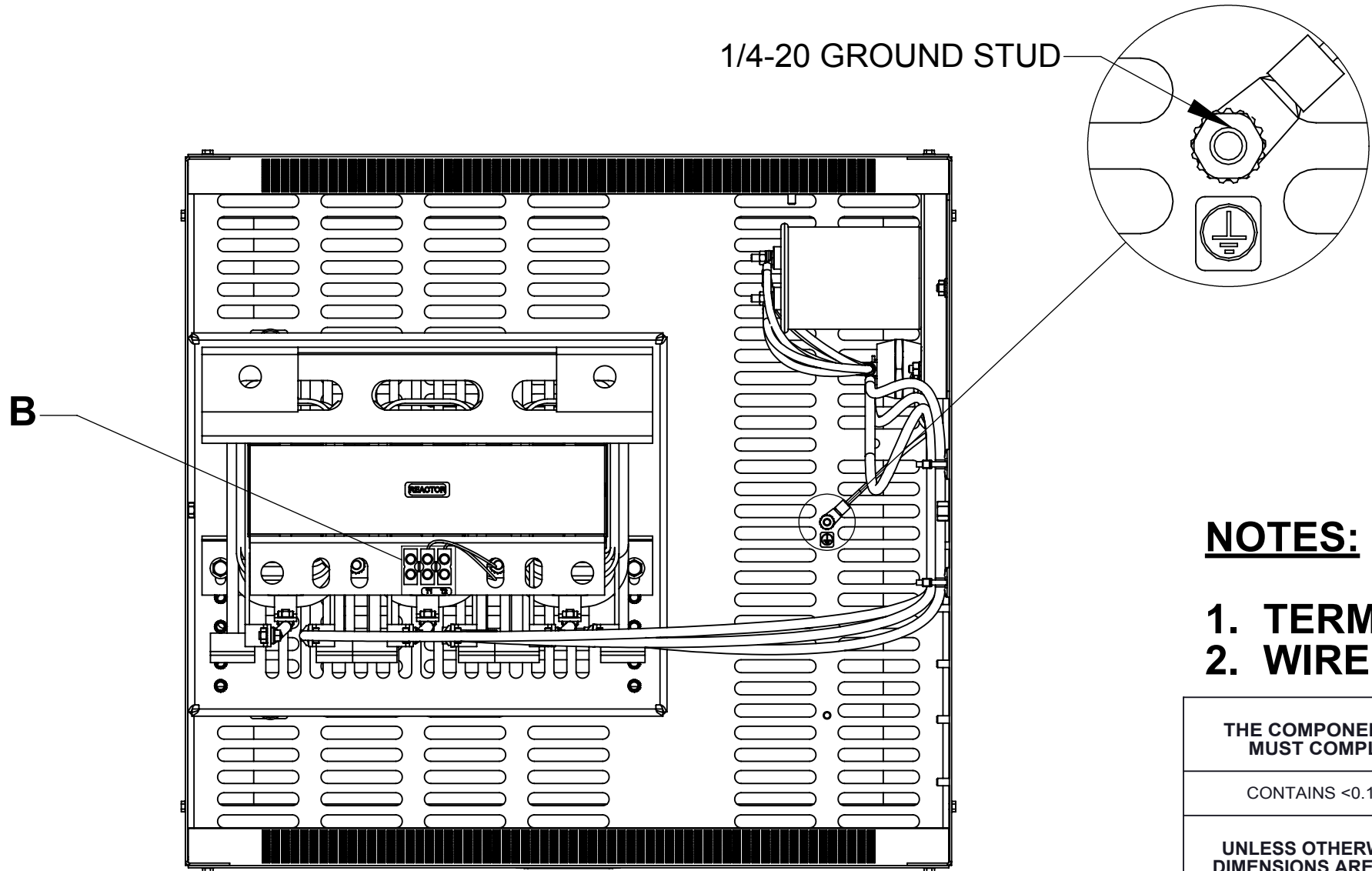
SIDE VIEW
(PANELS REMOVED)



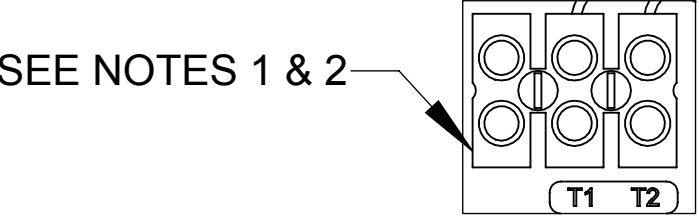
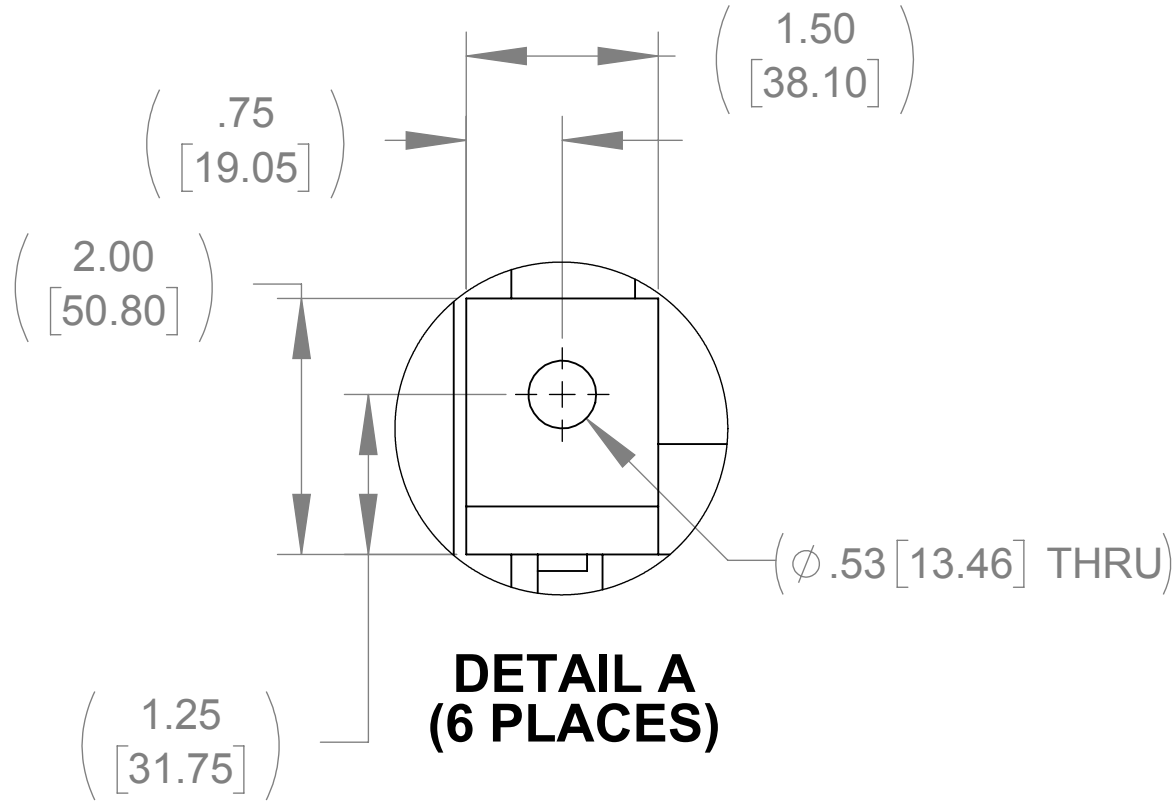
FRONT VIEW
(PANELS REMOVED)



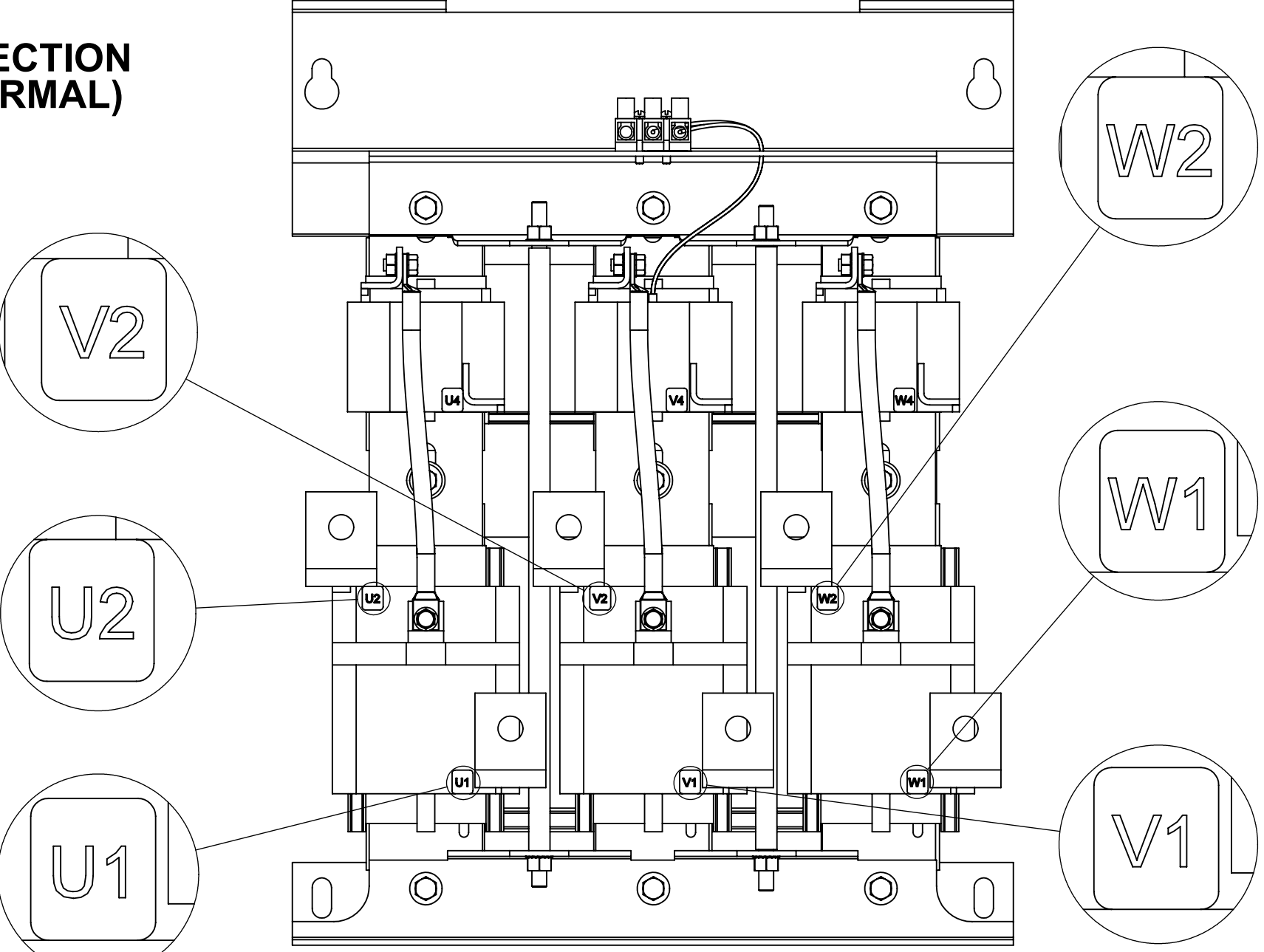
BOTTOM VIEW



TOP VIEW
(PANELS REMOVED)




DETAIL B
CUSTOMER CONNECTION
DETAIL VIEW (THERMAL)



CUSTOMER CONNECTION
DETAIL VIEW

- NOTES:**
1. TERMINAL SCREW TIGHTENING TORQUE: 16 IN/LBS.
 2. WIRE RANGE: 4-14 AWG.

THE COMPONENT, PART OR ASSEMBLY DESCRIBED IN THIS DOCUMENT MUST COMPLY WITH THE EU(EUROPEAN UNION) DIRECTIVE RoHS2		MATERIAL		CONFIDENTIAL AND PROPRIETARY INFORMATION THIS DOCUMENT CONTAINS CONFIDENTIAL AND PROPRIETARY INFORMATION OF MTE CORPORATION AND MAY NOT BE USED, COPIED OR DISCLOSED TO OTHERS EXCEPT WITH THE AUTHORIZED WRITTEN PERMISSION OF MTE CORPORATION		
CONTAINS <0.1% OF ANY SVHC BY WEIGHT PER REACH REGULATION				DESCRIPTION		
UNLESS OTHERWISE SPECIFIED DIMENSIONS ARE IN INCHES [MM] TOLERANCES ARE: ANGLES: $\pm 1^\circ$ 1 PLACE .X: $\pm .1$ [2.5] 2 PLACE .XX: $\pm .03$ [0.76] 3 PLACE .XXX: $\pm .010$ [0.254]				MATRIX AP 128A 480V 60HZ FILTER, NEMA 1/2 ENCLOSURE		
N83 W13330 Leon Road Menomonee Falls, WI 53051 USA 800.455-4683 262.253.8200		DRAWN	DATE	SIZE	DWG No.	REV
		SG	09/12/11			
		CHECKED	DATE			
		JM	01/10/17	D	CD MAPG0128D	03
		APPROVED	DATE			
		JM	01/10/17	SCALE	1:5	SHEET 1 OF 1