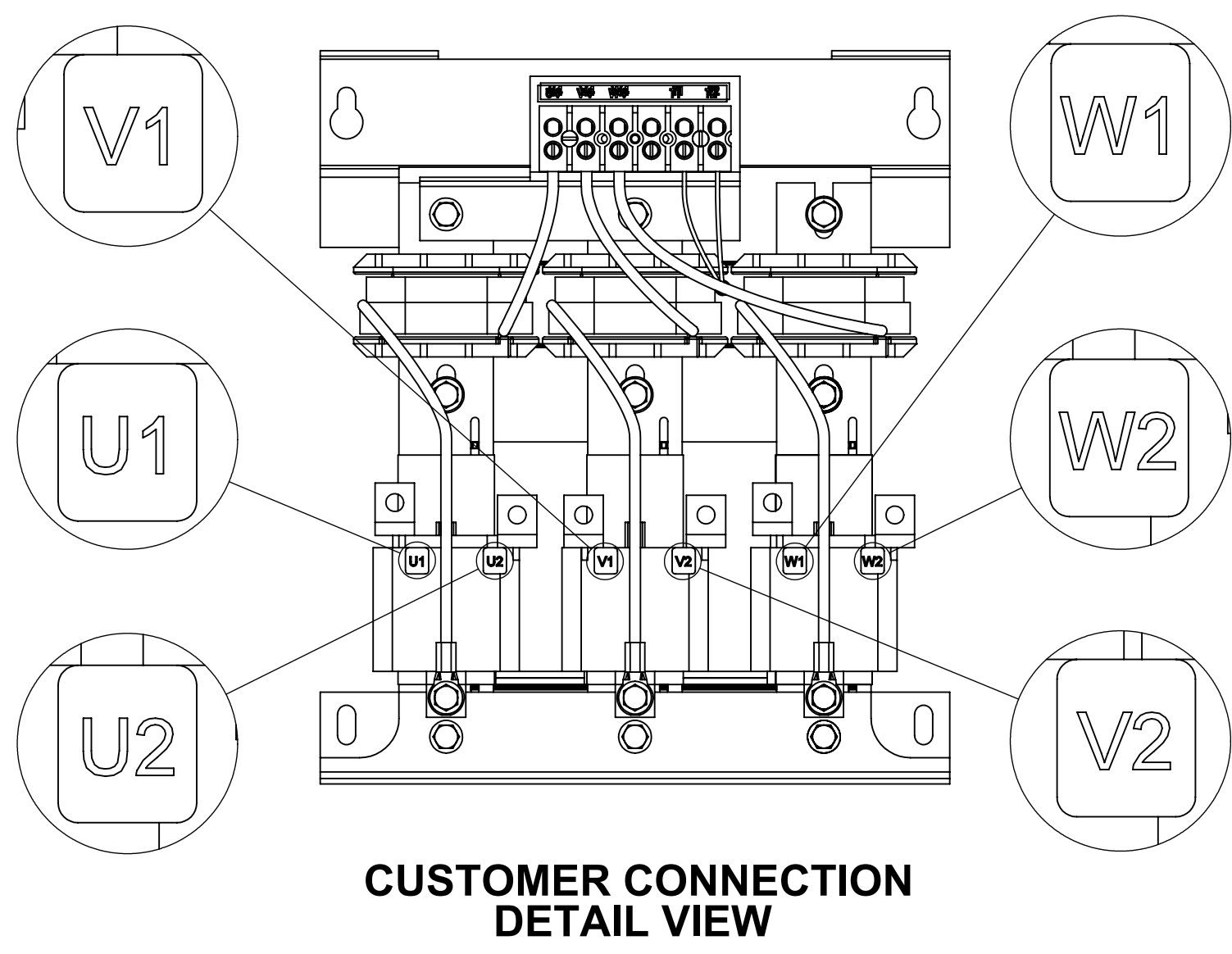
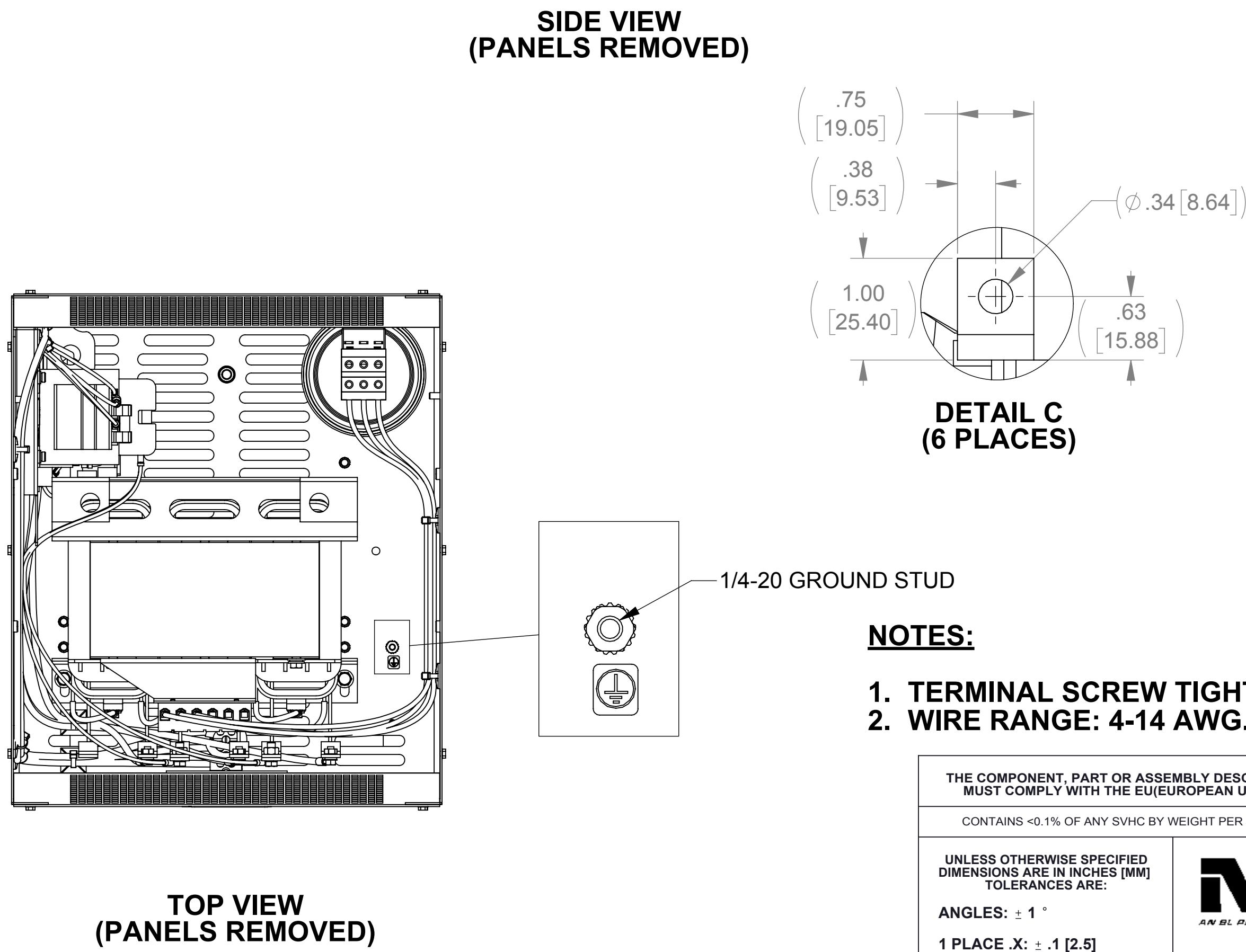
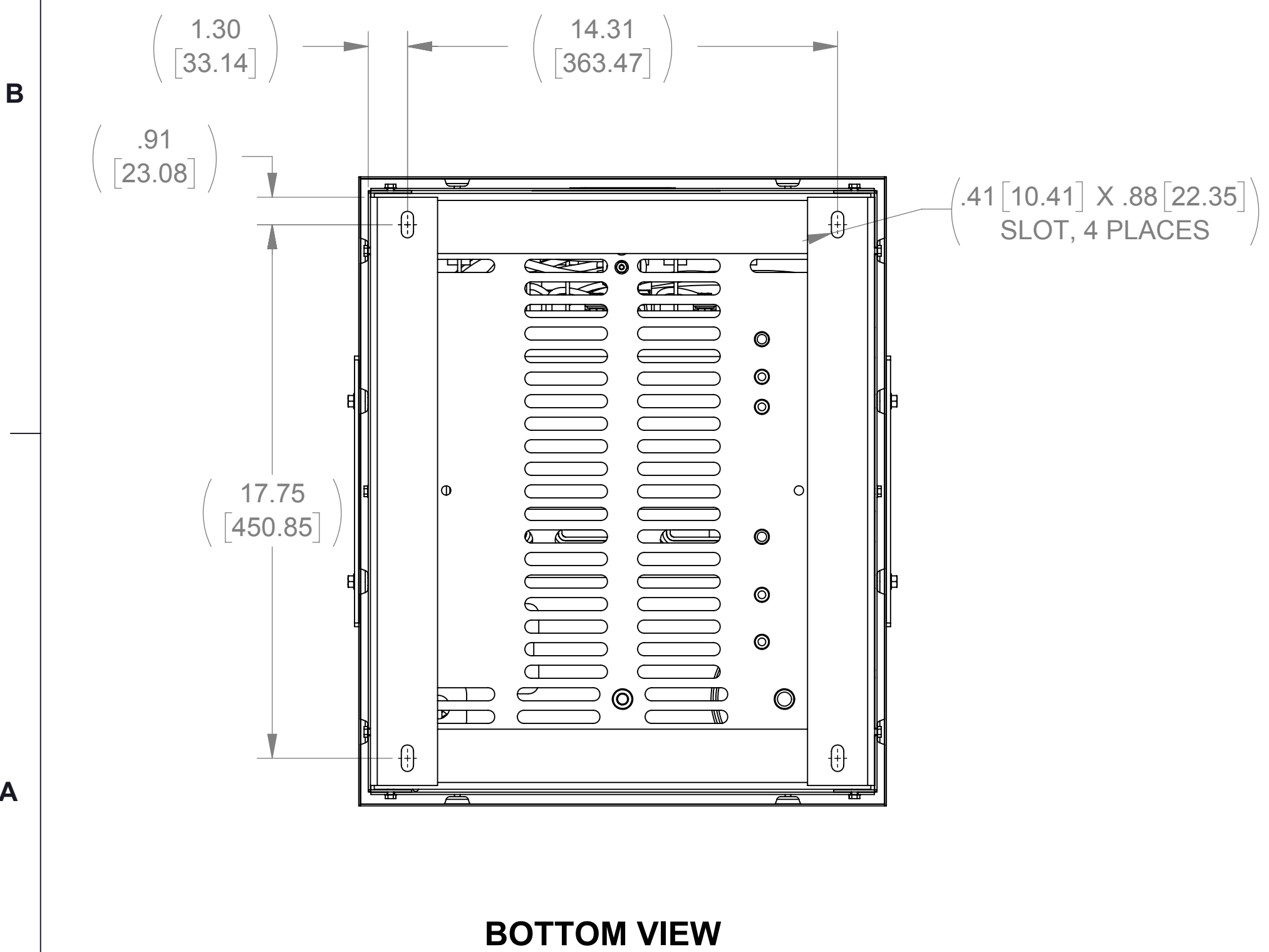
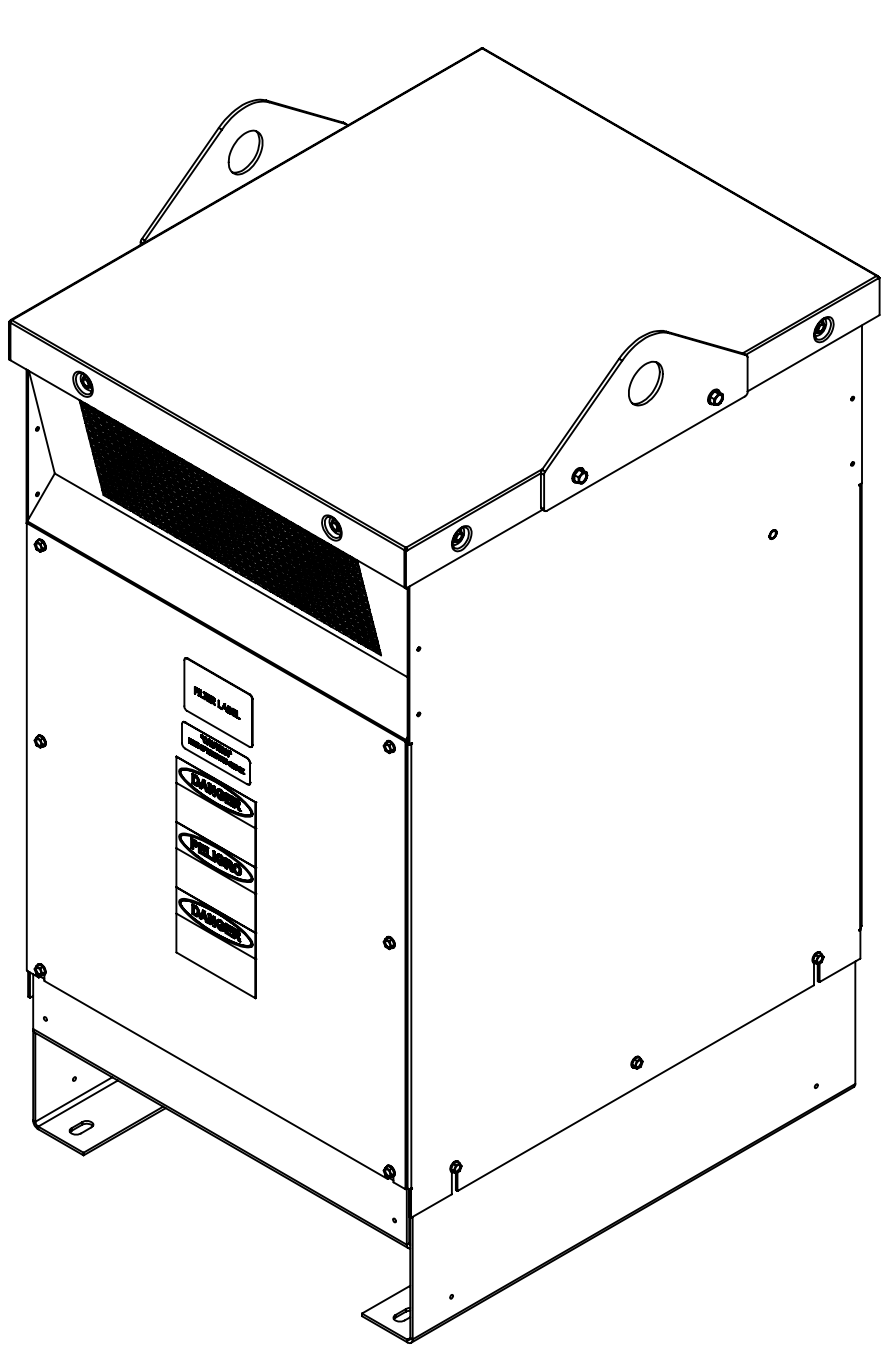
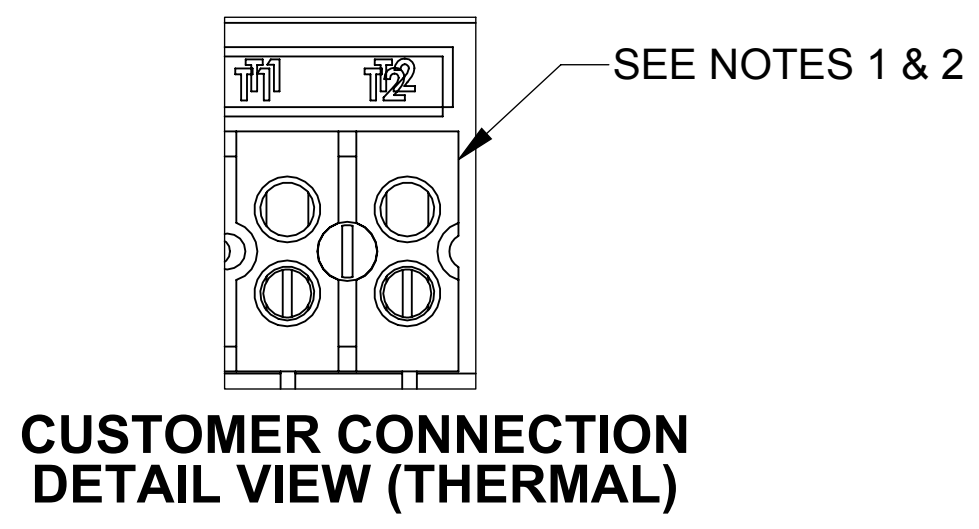
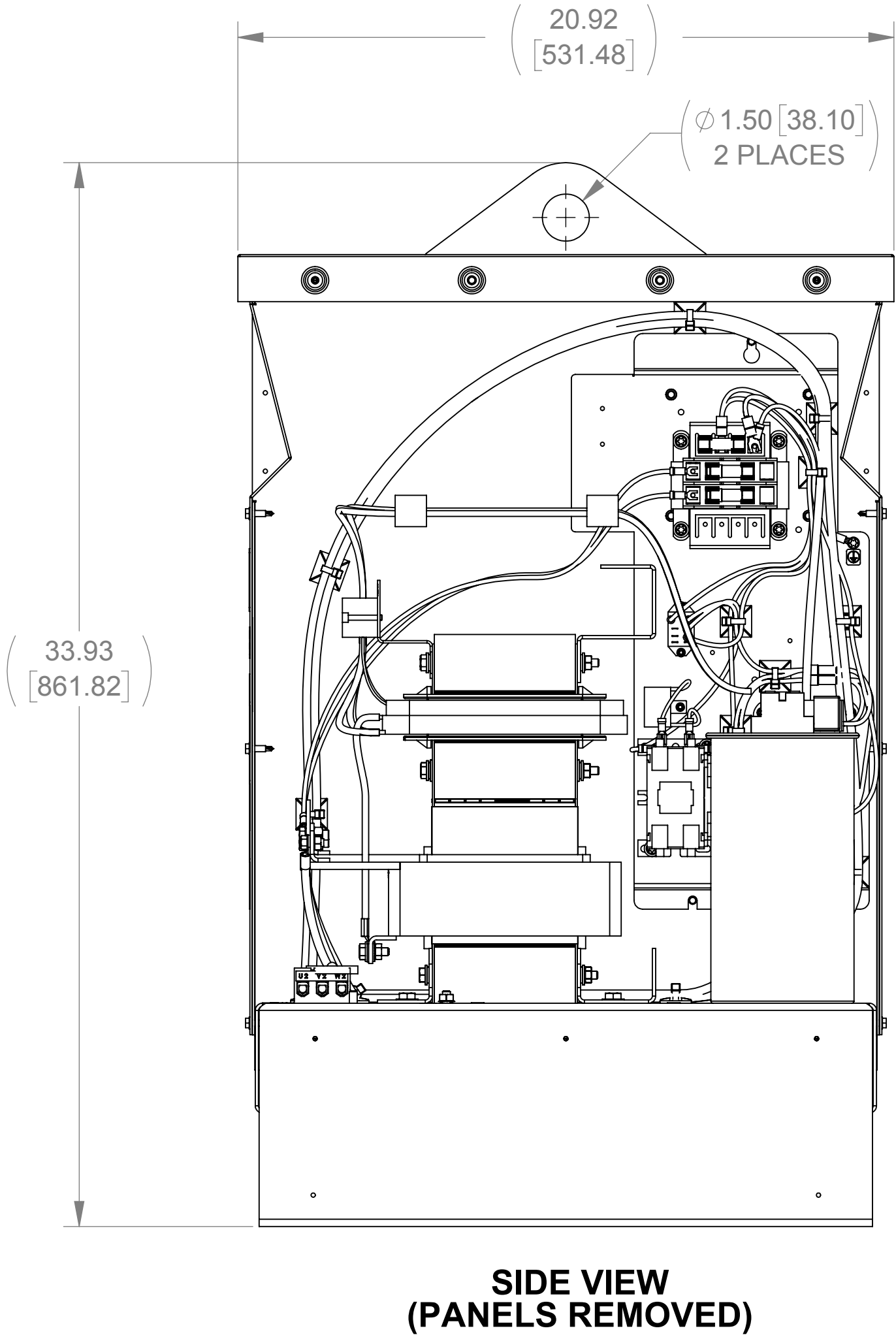
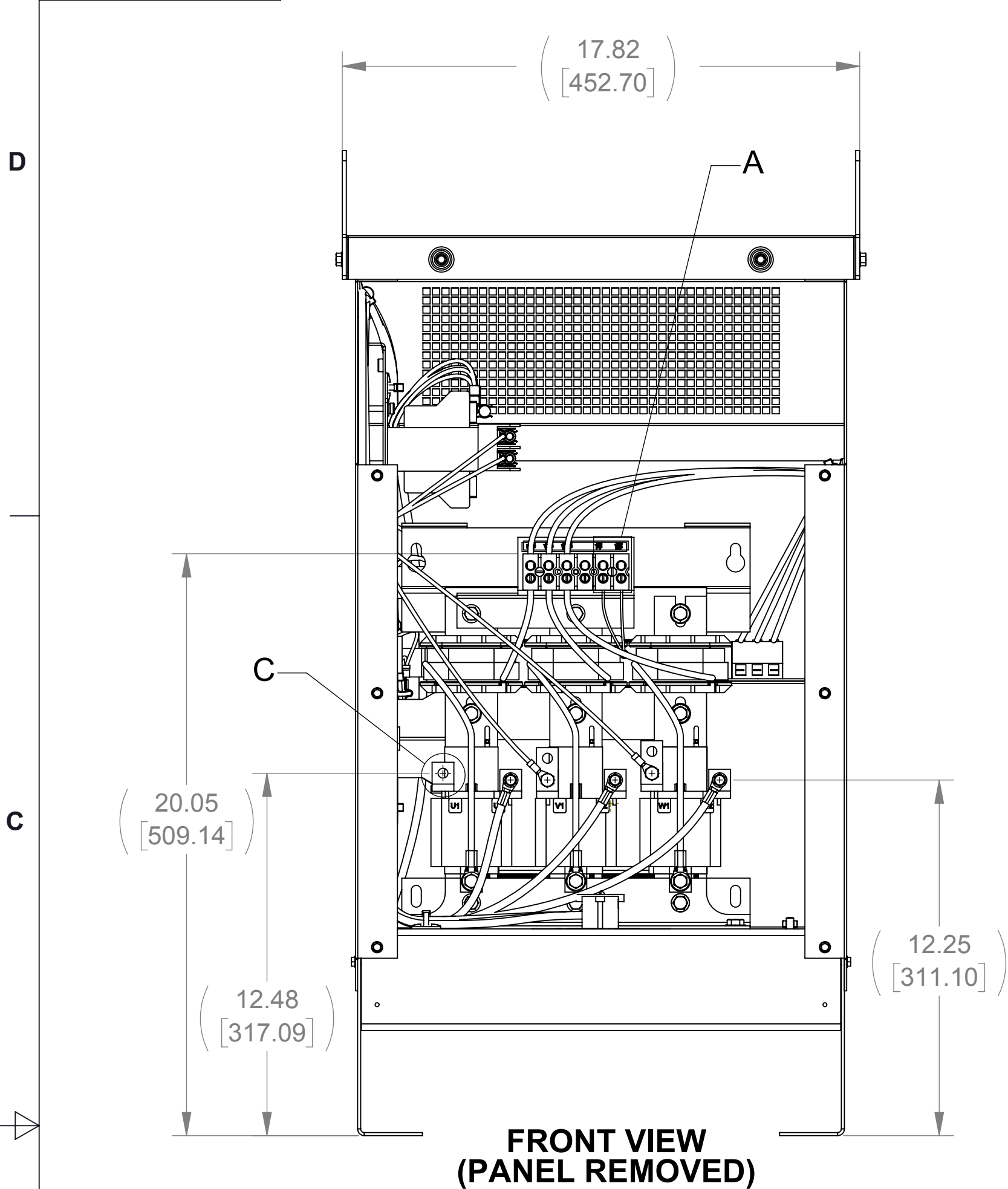



APPROX. WEIGHT (LBS)
257

ECO No	DESCRIPTION	REV BY	DATE
M9070	UPDATE TO CURRENT DRAWING STANDARDS	MN	04/03/14



NOTES:

1. TERMINAL SCREW TIGHTENING TORQUE: 16 IN/LBS, MAX.
2. WIRE RANGE: 4-14 AWG.

THE COMPONENT, PART OR ASSEMBLY DESCRIBED IN THIS DOCUMENT MUST COMPLY WITH THE EU(EUROPEAN UNION) DIRECTIVE RoHS2		MATERIAL		CONFIDENTIAL AND PROPRIETARY INFORMATION THIS DOCUMENT CONTAINS CONFIDENTIAL AND PROPRIETARY INFORMATION OF MTE CORPORATION AND MAY NOT BE USED, COPIED OR DISCLOSED TO OTHERS EXCEPT WITH THE AUTHORIZED WRITTEN PERMISSION OF MTE CORPORATION		
CONTAINS <0.1% OF ANY SVHC BY WEIGHT PER REACH REGULATION				DESCRIPTION		
UNLESS OTHERWISE SPECIFIED DIMENSIONS ARE IN INCHES [MM] TOLERANCES ARE: ANGLES: ± 1 ° 1 PLACE .X: ± .1 [2.5] 2 PLACE .XX: ± .03 [0.76] 3 PLACE .XXX: ± .010 [0.254]		 N83 W13330 Leon Road Menomonee Falls, WI 53051 USA 800.455.4683 262.253.8200		MATRIX AP 66A 600V 60HZ FILTER, NEMA 1/2 ENCLOSURE		
		DRAWN SU	DATE 04/16/13	SIZE D		DWG No. CD MAPG0066E
		CHECKED RH	DATE 04/07/14	REV 02		
		APPROVED RH	DATE 04/07/14	SCALE 1:4		SHEET 1 OF 1