

APPROX. WEIGHT (LBS)
190

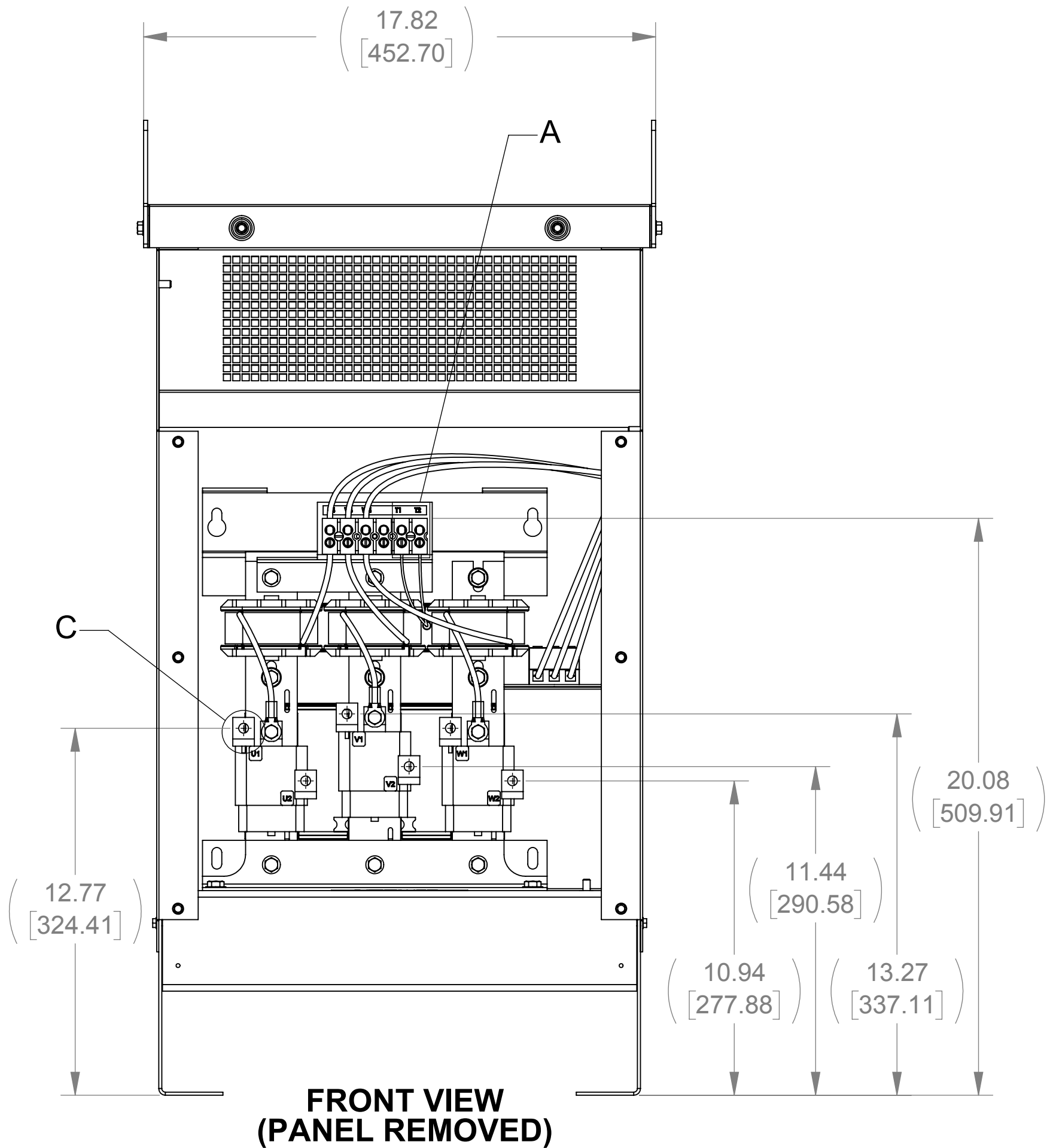
ECO No	DESCRIPTION	REV BY	DATE
M9070	UPDATE TO CURRENT DRAWING STANDARDS	MN	04/03/14

D

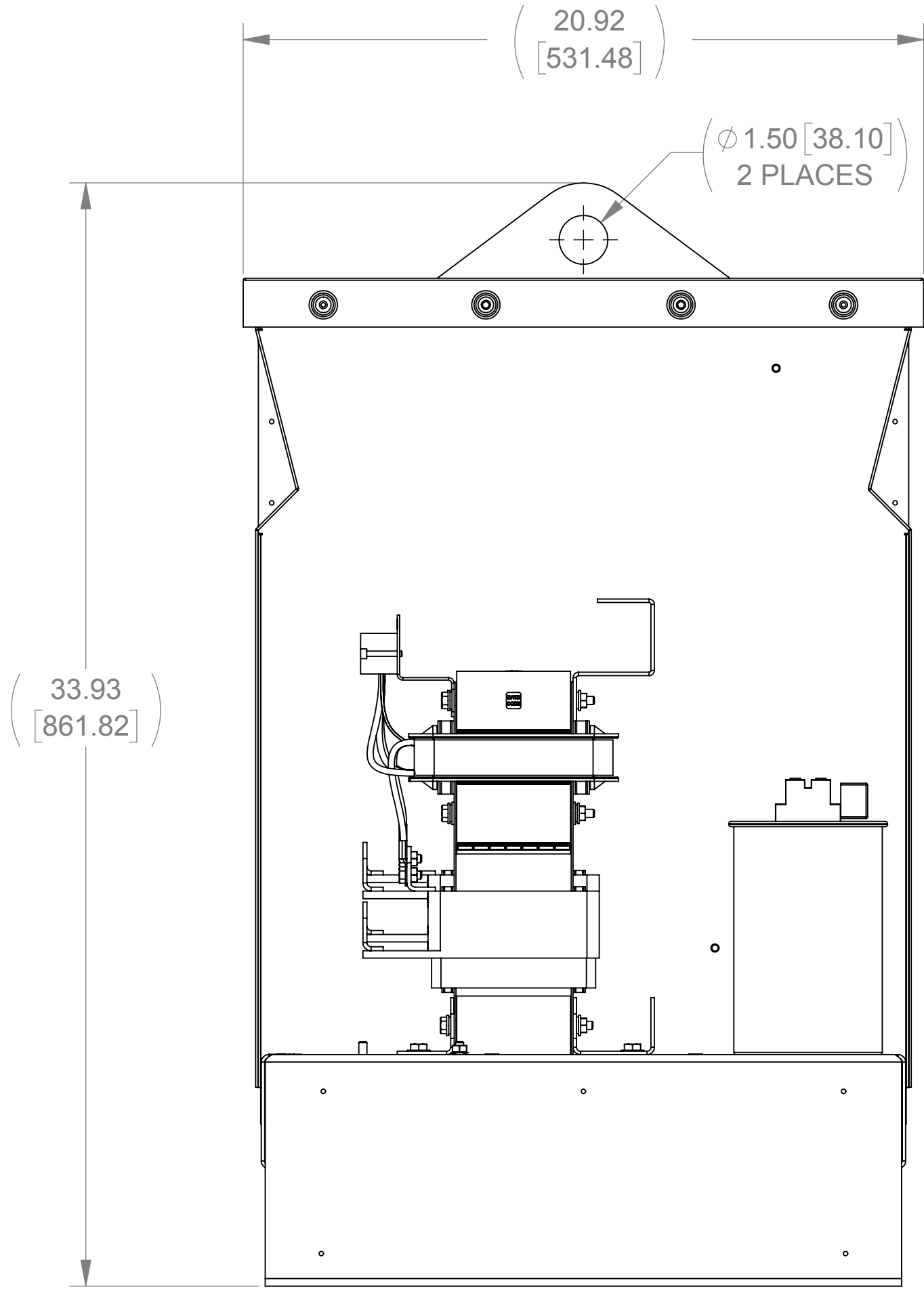
C

B

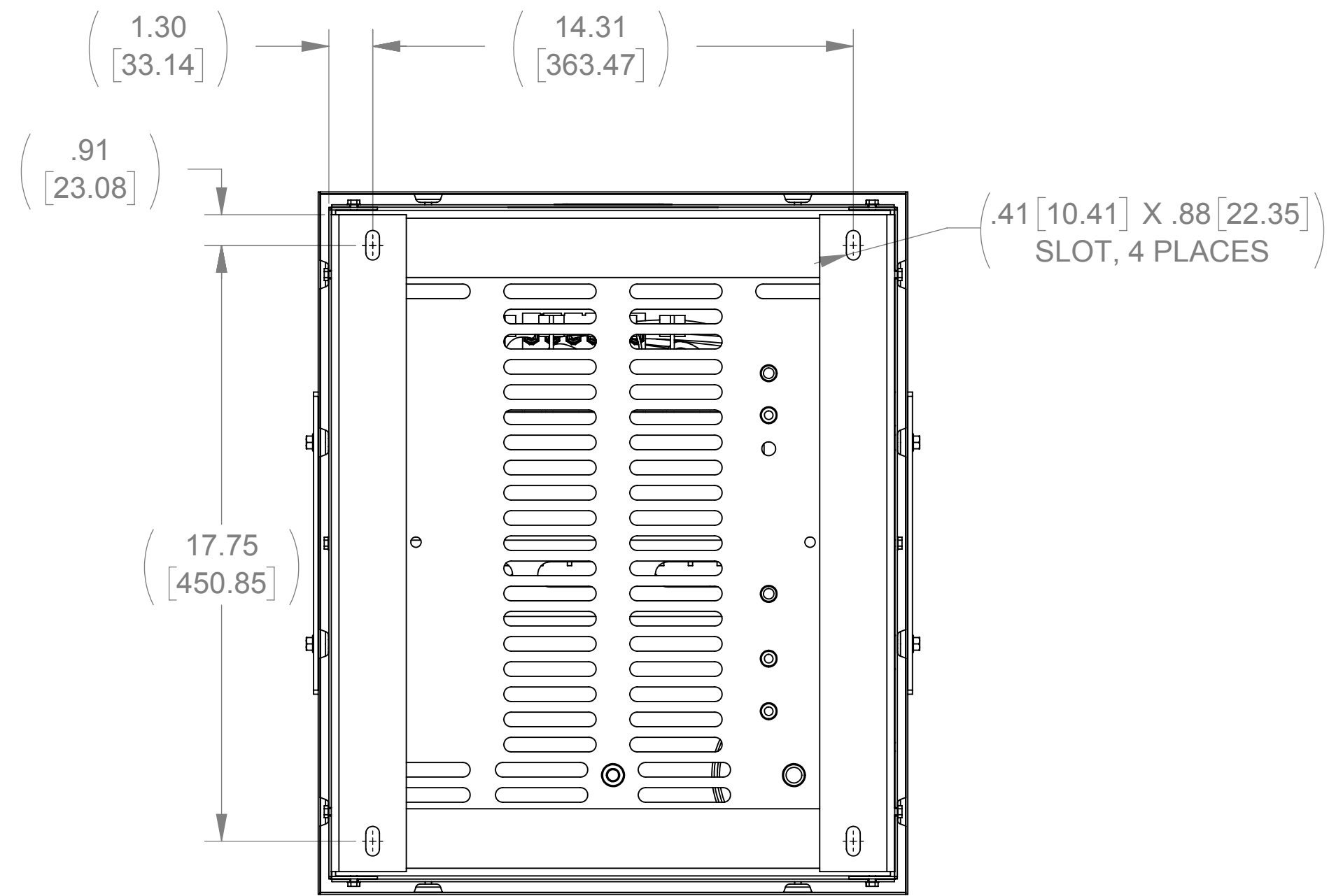
A



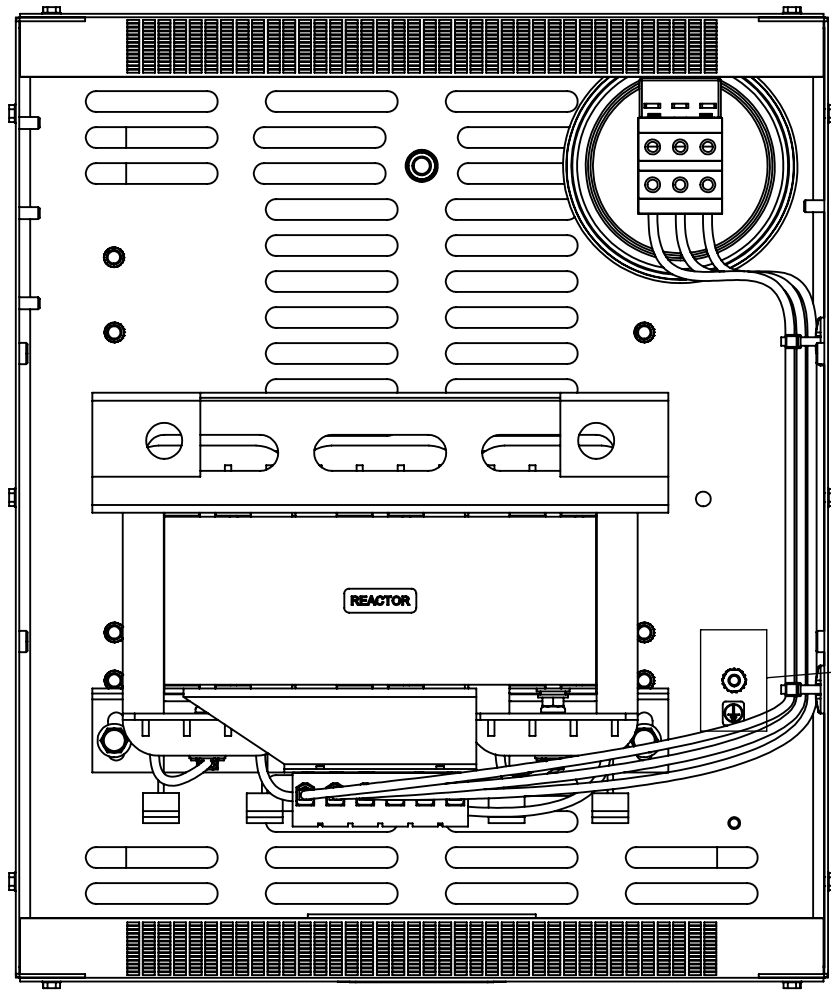
FRONT VIEW
(PANEL REMOVED)



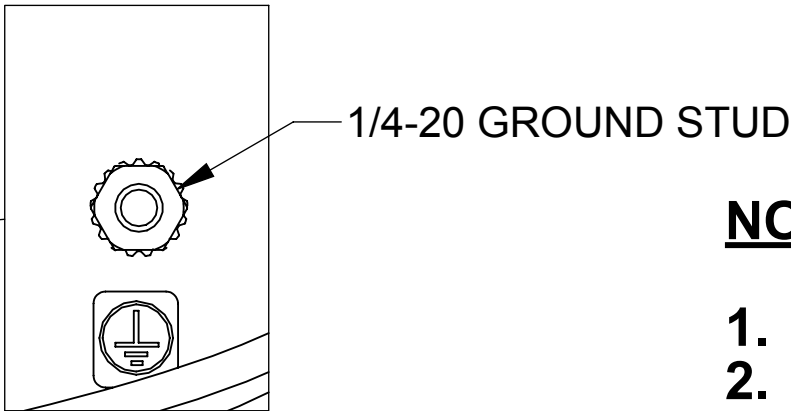
SIDE VIEW
(PANELS REMOVED)



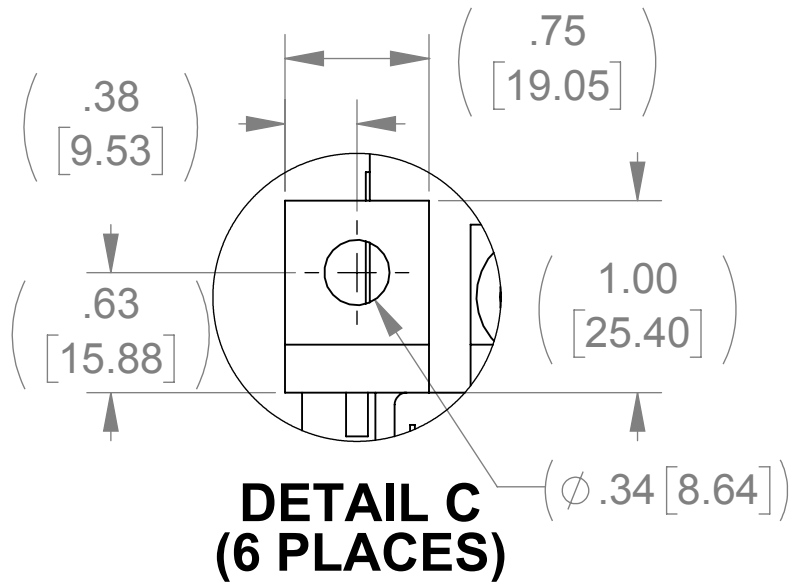
BOTTOM VIEW



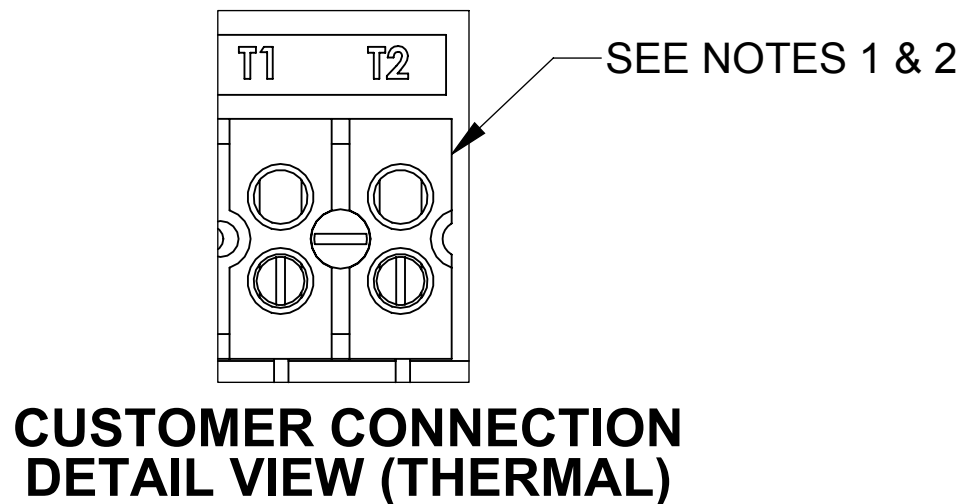
TOP VIEW
(PANELS REMOVED)



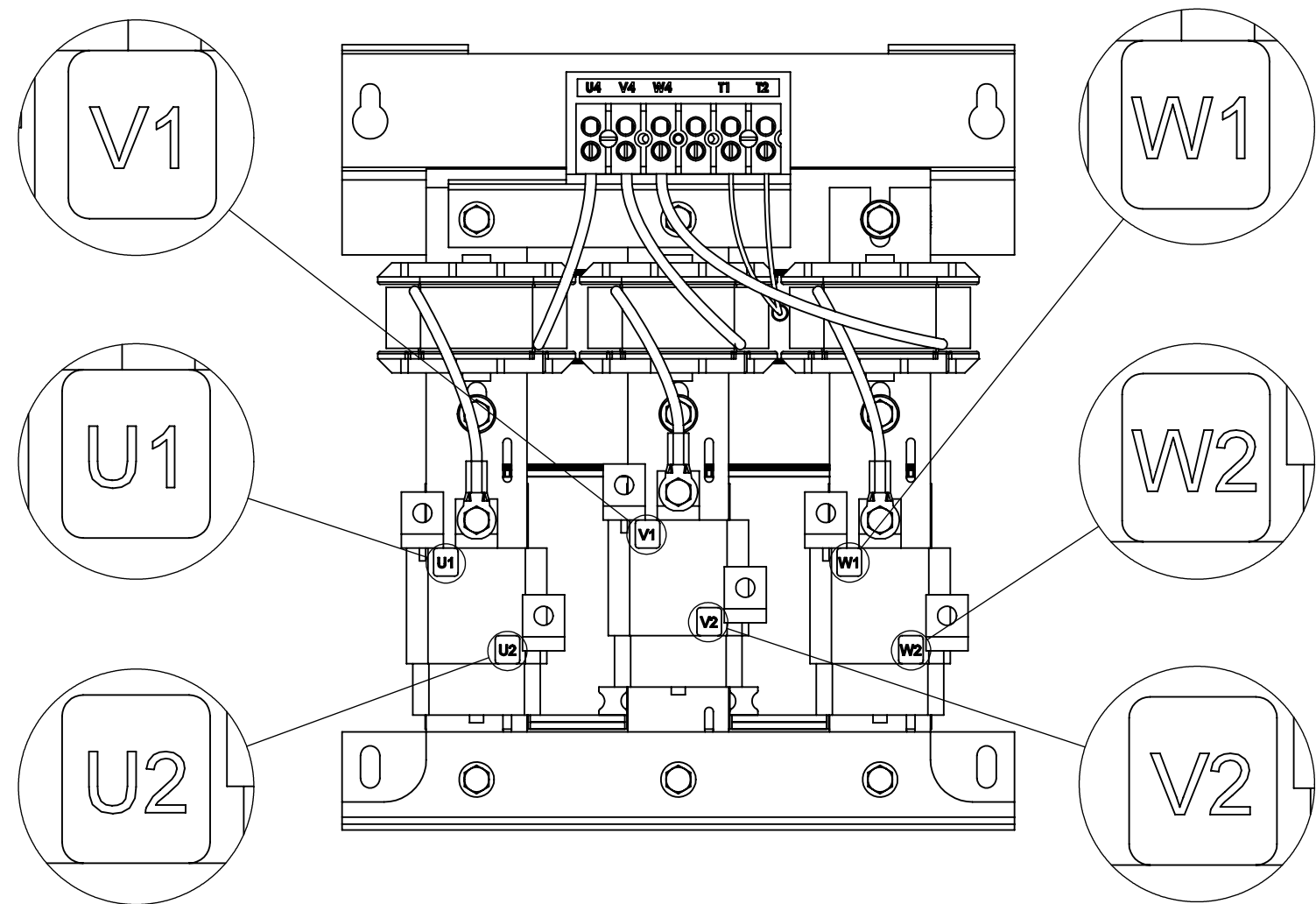
1/4-20 GROUND STUD



DETAIL C
(6 PLACES)



CUSTOMER CONNECTION
DETAIL VIEW (THERMAL)



CUSTOMER CONNECTION
DETAIL VIEW

NOTES:

1. TERMINAL SCREW TIGHTENING TORQUE: 16 IN/LBS, MAX.
2. WIRE RANGE: 4-14 AWG.

THE COMPONENT, PART OR ASSEMBLY DESCRIBED IN THIS DOCUMENT MUST COMPLY WITH THE EU(EUROPEAN UNION) DIRECTIVE RoHS2		MATERIAL		CONFIDENTIAL AND PROPRIETARY INFORMATION THIS DOCUMENT CONTAINS CONFIDENTIAL AND PROPRIETARY INFORMATION OF MTE CORPORATION AND MAY NOT BE USED, COPIED OR DISCLOSED TO OTHERS EXCEPT WITH THE AUTHORIZED WRITTEN PERMISSION OF MTE CORPORATION		
CONTAINS <0.1% OF ANY SVHC BY WEIGHT PER REACH REGULATION				DESCRIPTION		
UNLESS OTHERWISE SPECIFIED DIMENSIONS ARE IN INCHES [MM] TOLERANCES ARE: ANGLES: ± 1 ° 1 PLACE .X: ± .1 [2.5] 2 PLACE .XX: ± .03 [0.76] 3 PLACE .XXX: ± .010 [0.254]		MTE AN BL POWER ELECTRONICS COMPANY N83 W13330 Leon Road Menomonee Falls, WI 53051 USA 800.455.4683 262.253.8200		MATRIX AP 66A 480V 60HZ FILTER, NEMA 1/2 ENCLOSURE		
		DRAWN JP 05/09/12		DATE 04/07/14		
		CHECKED RH 04/07/14		DATE 04/07/14		
		APPROVED RH 04/07/14		DATE 04/07/14		
		SIZE D		DWG No. CD MAPG0066D		REV 02
		SCALE 1:4		SHEET 1 OF 1		