

APPROX. WEIGHT
(LBS)
309

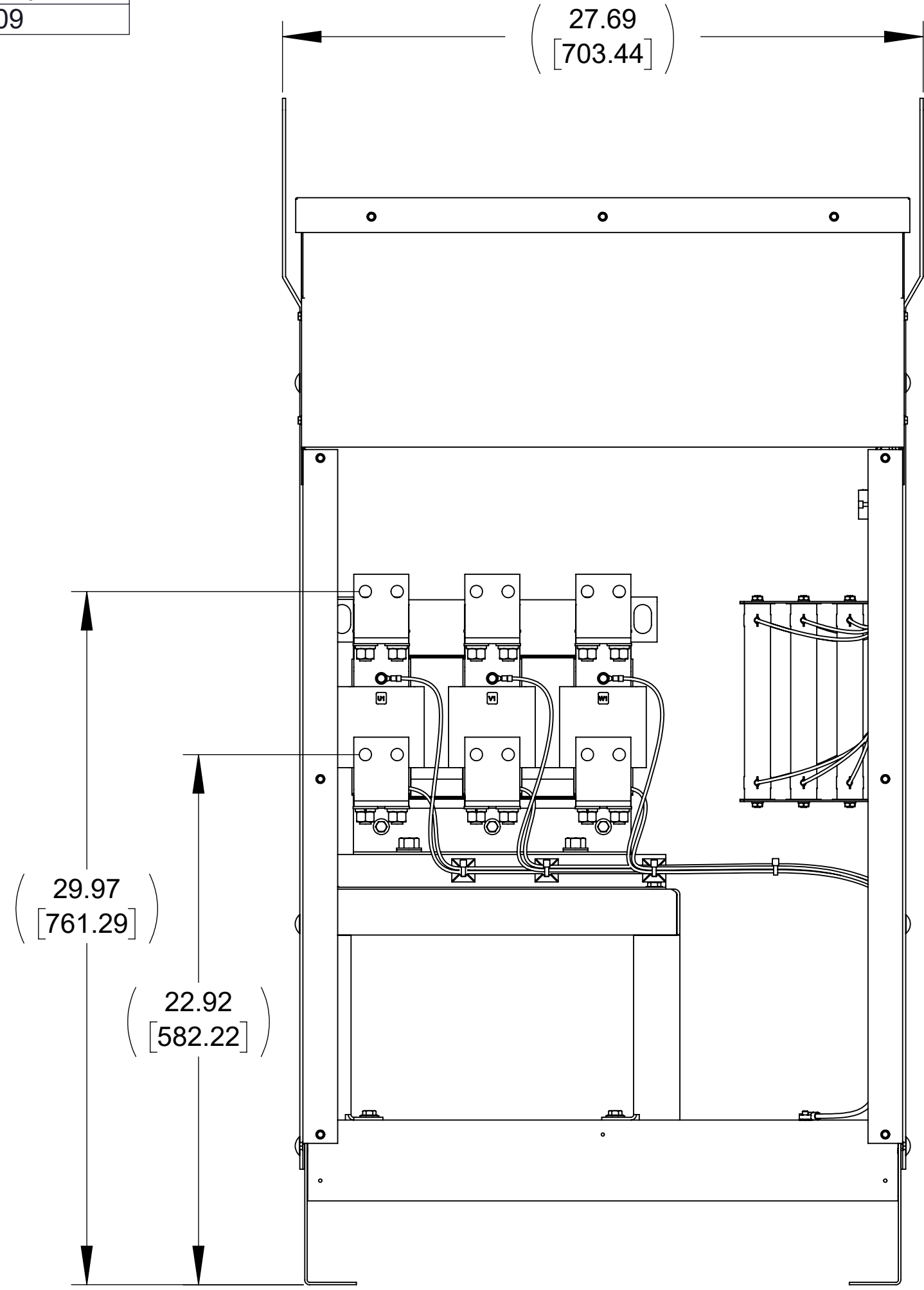
ECO No	DESCRIPTION	REV BY	DATE
M14083	RELEASED TO PRODUCTION	JD	11/12/21

D

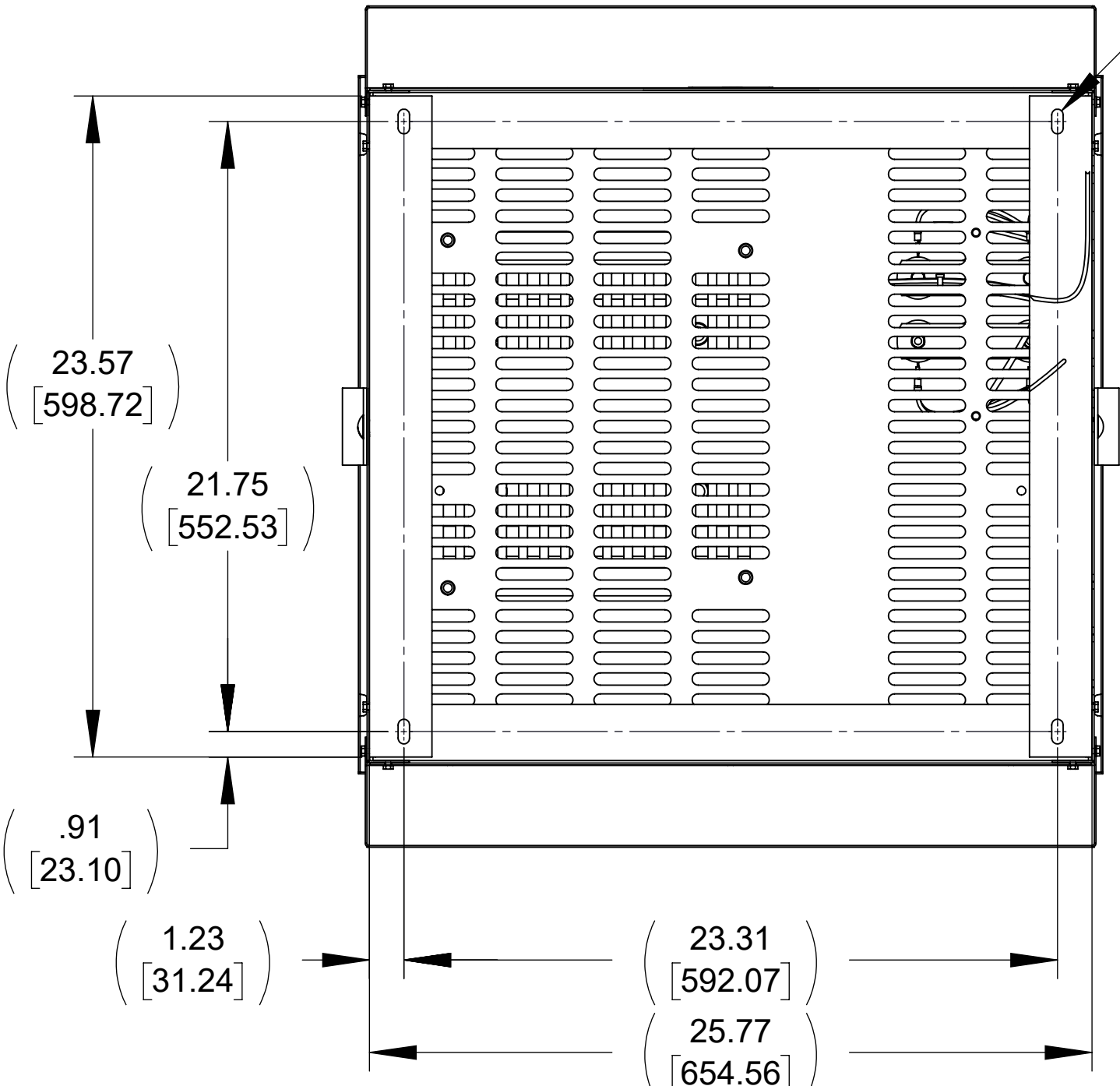
C

B

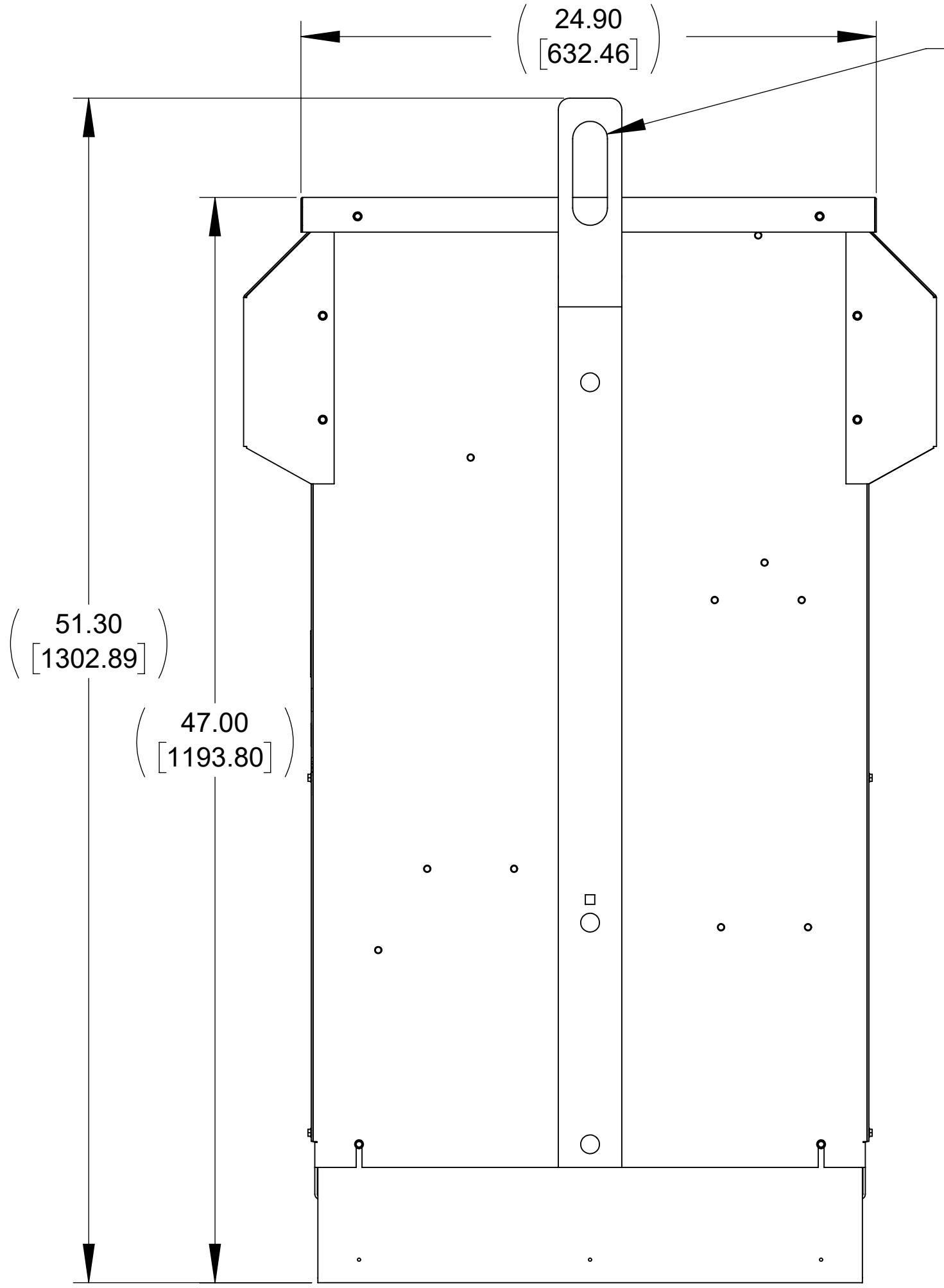
A



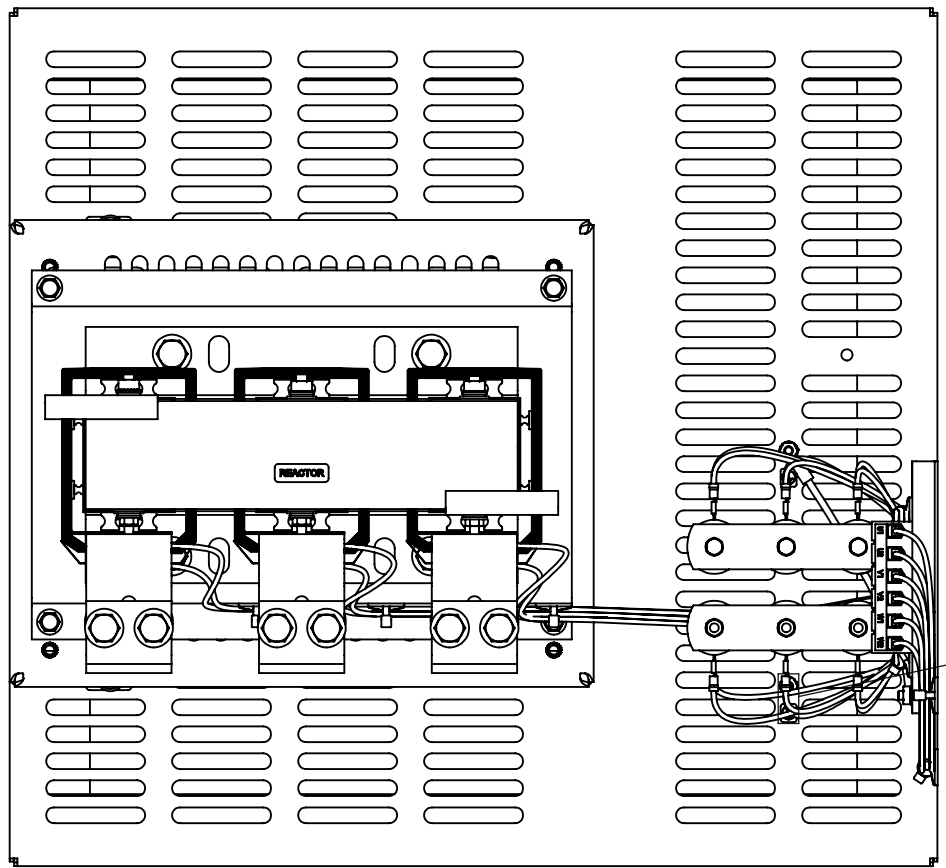
FRONT VIEW
(PANELS REMOVED)



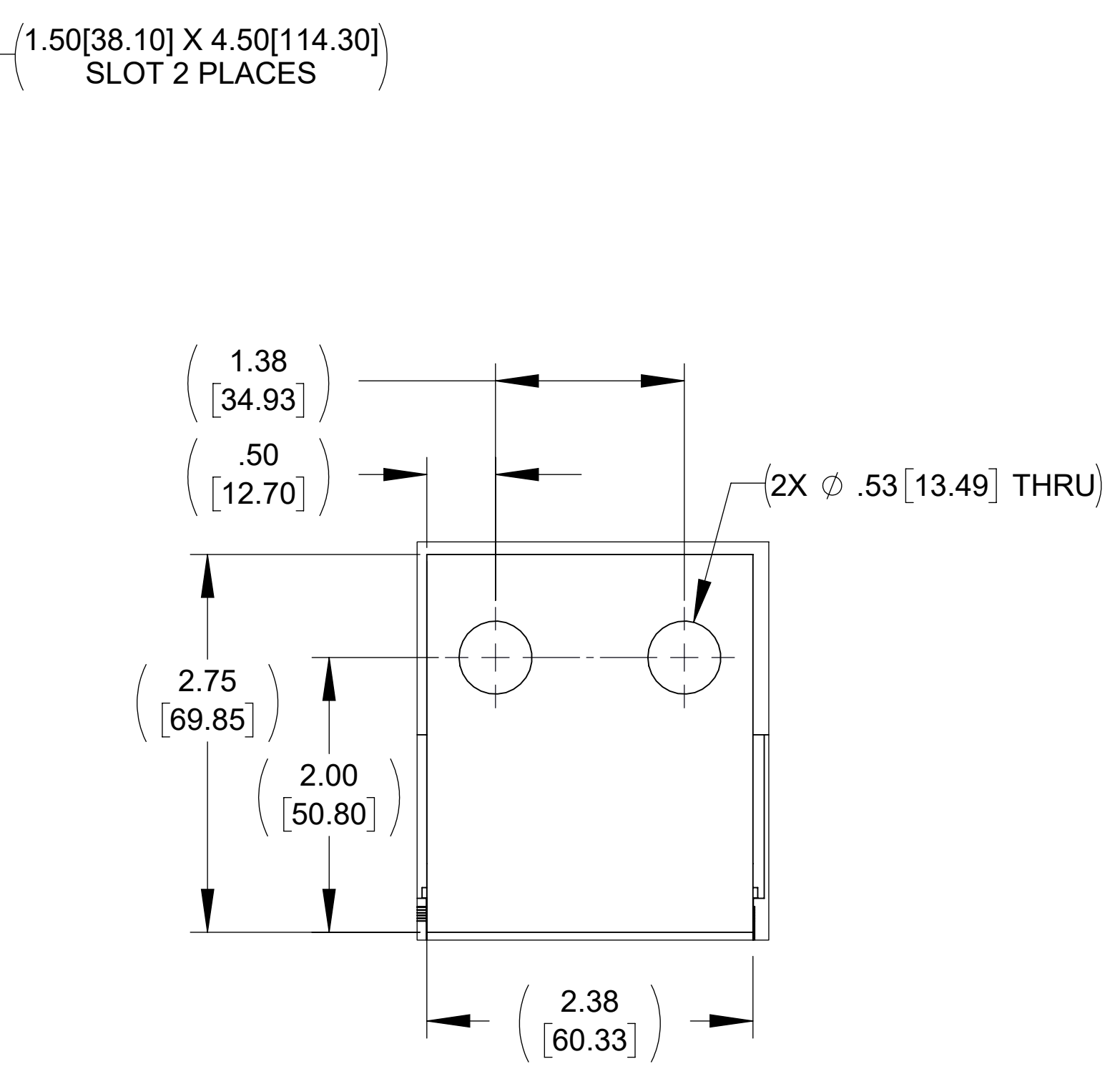
BOTTOM VIEW



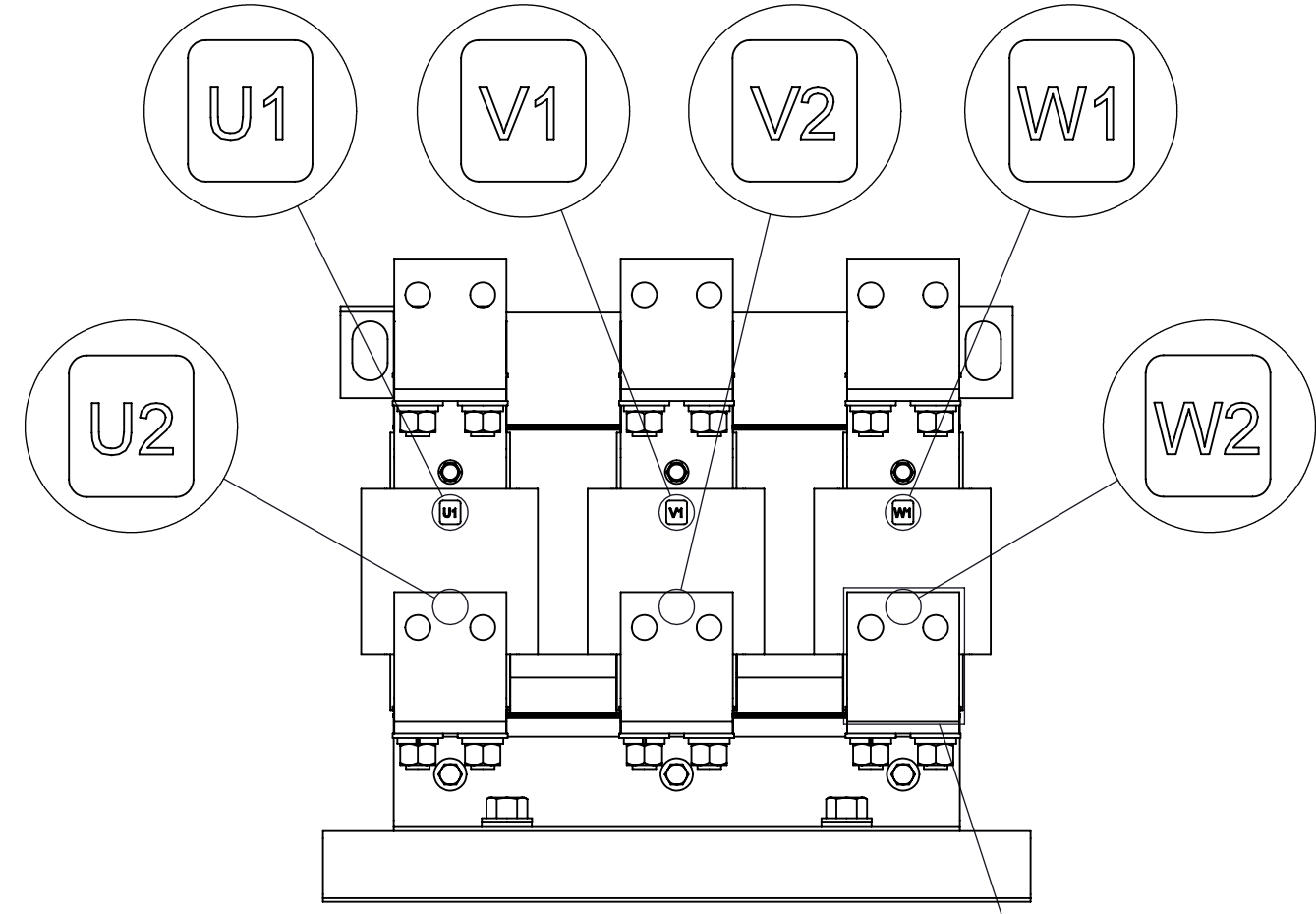
SIDE VIEW



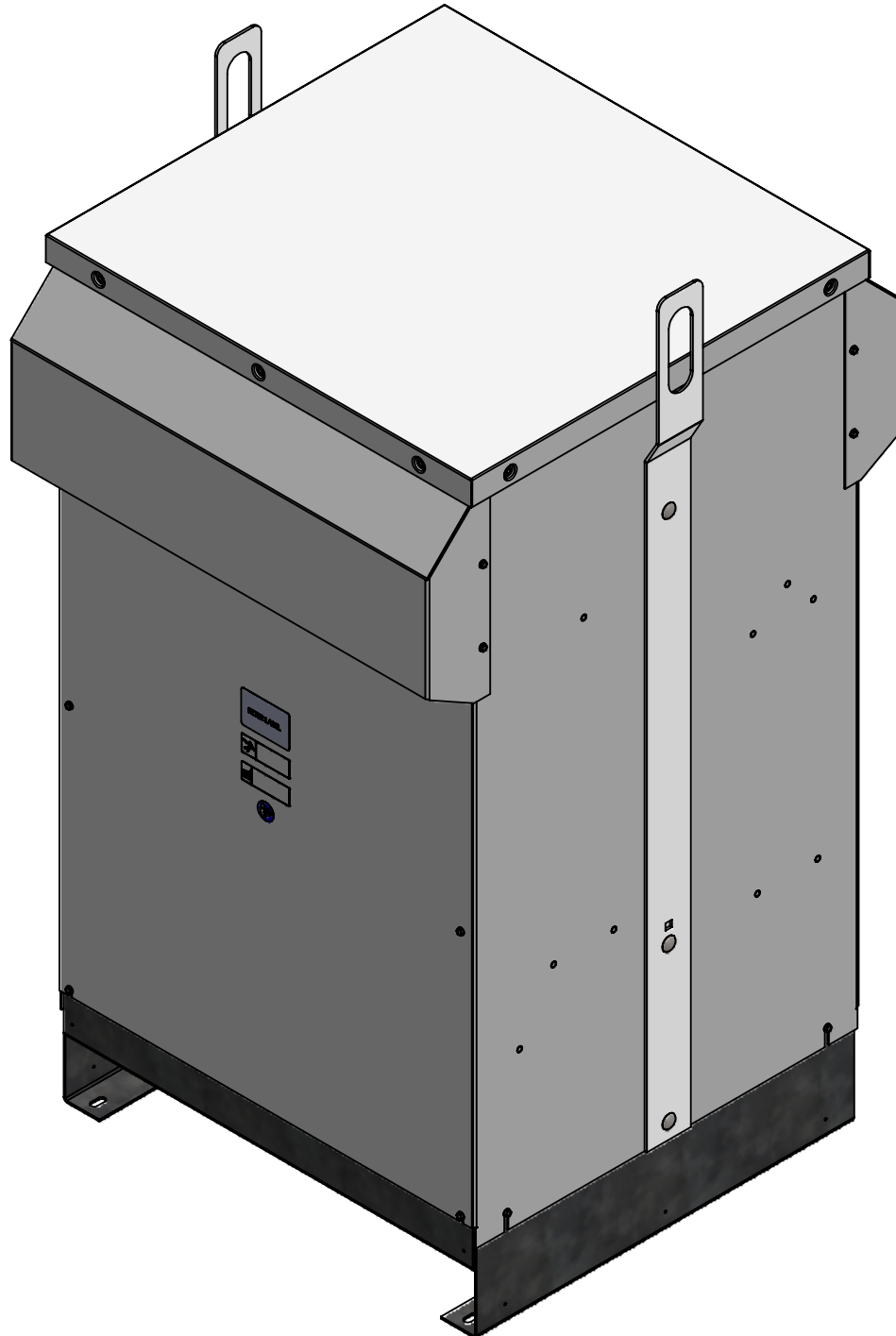
TOP VIEW
(PANELS REMOVED)



DETAIL A
(6 PLACES)



CUSTOMER CONNECTION
DETAIL VIEW



D

C

B

A

NOTES:

1. REFER TO USER MANUAL FOR COMPLETE INSTALLATION INSTRUCTIONS

THE COMPONENT, PART OR ASSEMBLY DESCRIBED IN THIS DOCUMENT MUST COMPLY WITH THE EU(EUROPEAN UNION) DIRECTIVE RoHS2		DRAWN BY: JD	DATE 08/25/21	CONFIDENTIAL AND PROPRIETARY INFORMATION THIS DOCUMENT CONTAINS CONFIDENTIAL AND PROPRIETARY INFORMATION OF MTE CORPORATION AND MAY NOT BE USED, COPIED OR DISCLOSED TO OTHERS EXCEPT WITH THE AUTHORIZED WRITTEN PERMISSION OF MTE CORPORATION		
CONTAINS <0.1% OF ANY SVHC BY WEIGHT PER REACH REGULATION		CHECKED BY: JD	DATE 11/12/21	DESCRIPTION DVRT E SERIES 750A 208-600V 2-4kHz FILTER, NEMA 3R		
UNLESS OTHERWISE SPECIFIED DIMENSIONS ARE IN INCHES [MM] TOLERANCES ARE: ANGLES: ± 1 ° 1 PLACE .X: ± .1 [2.5] 2 PLACE .XX: ± .03 [0.76] 3 PLACE .XXX: ± .010 [0.254]		ME APPROVED BY: DP	DATE 11/12/21			
		RE APPROVED BY: PY	DATE 11/15/21			
				SIZE D	DWG No. CD DVTW0750E	REV 01
				SCALE 3:16	Sheet1	SHEET 1 OF 1



N83 W13330 Leon Road
Menomonee Falls, WI 53051 USA
800.425.4683
262.253.8200