

APPROX. WEIGHT
(LBS)
262

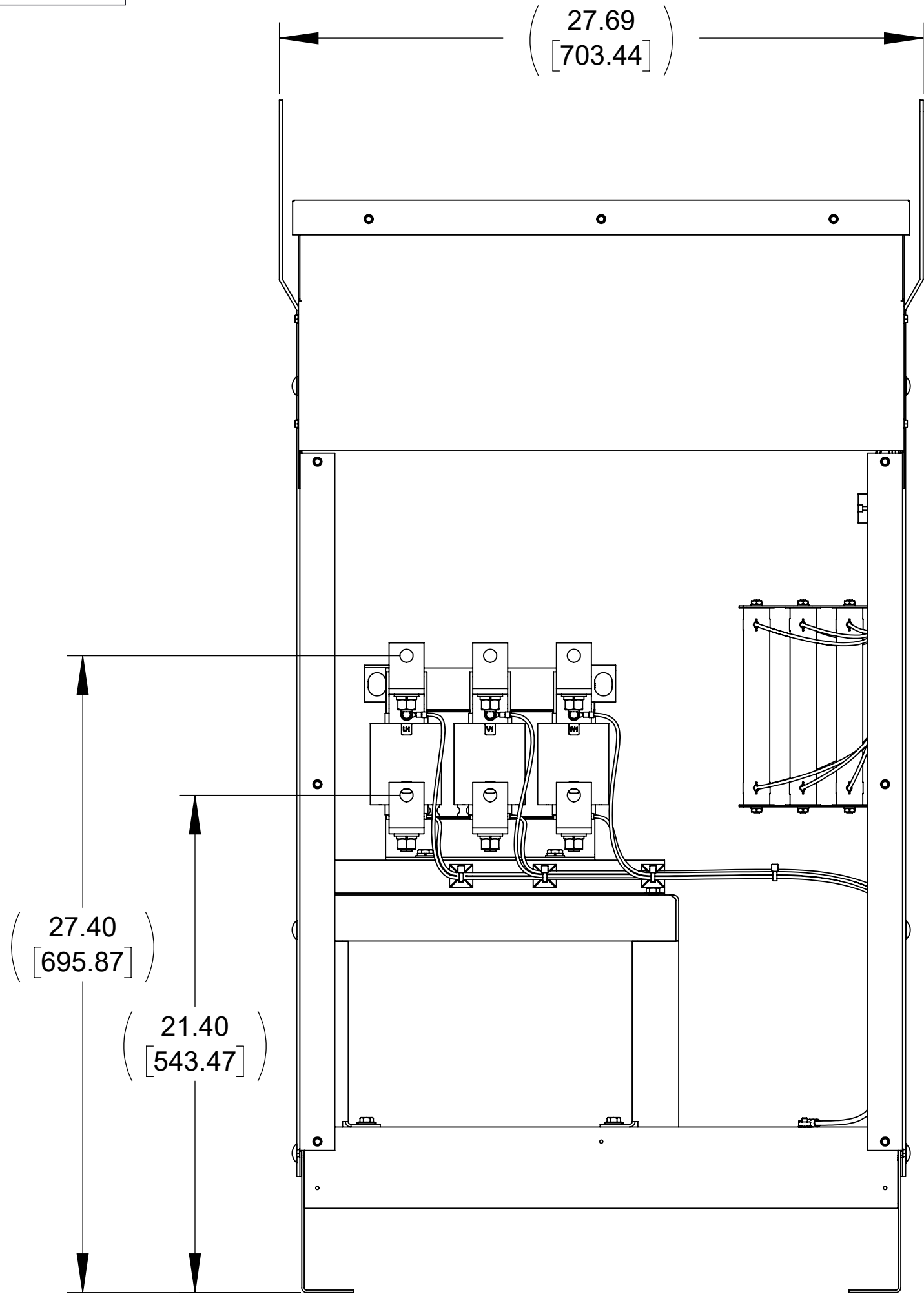
ECO No	DESCRIPTION	REV BY	DATE
M14083	RELEASED TO PRODUCTION	JD	11/12/21

D

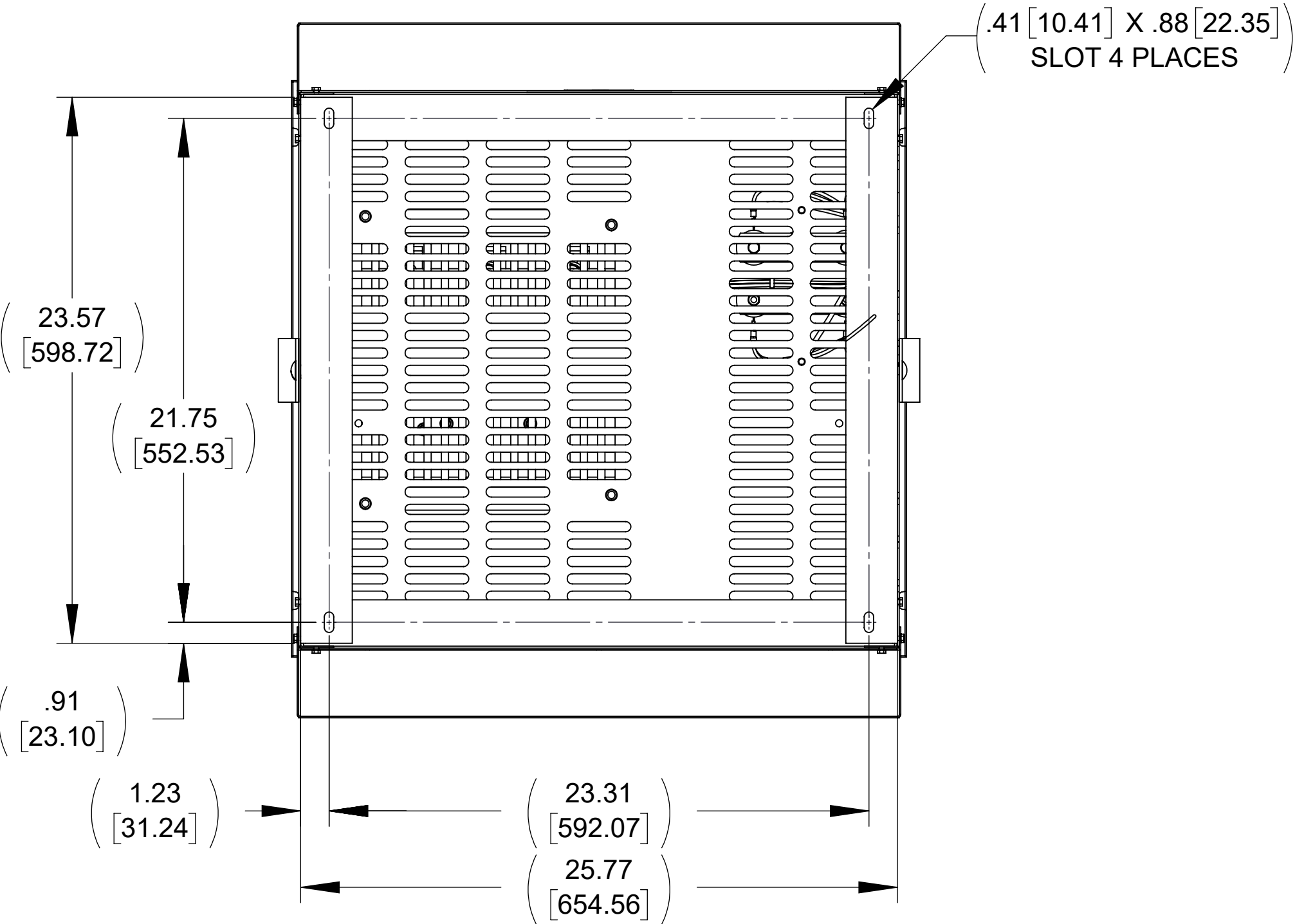
C

B

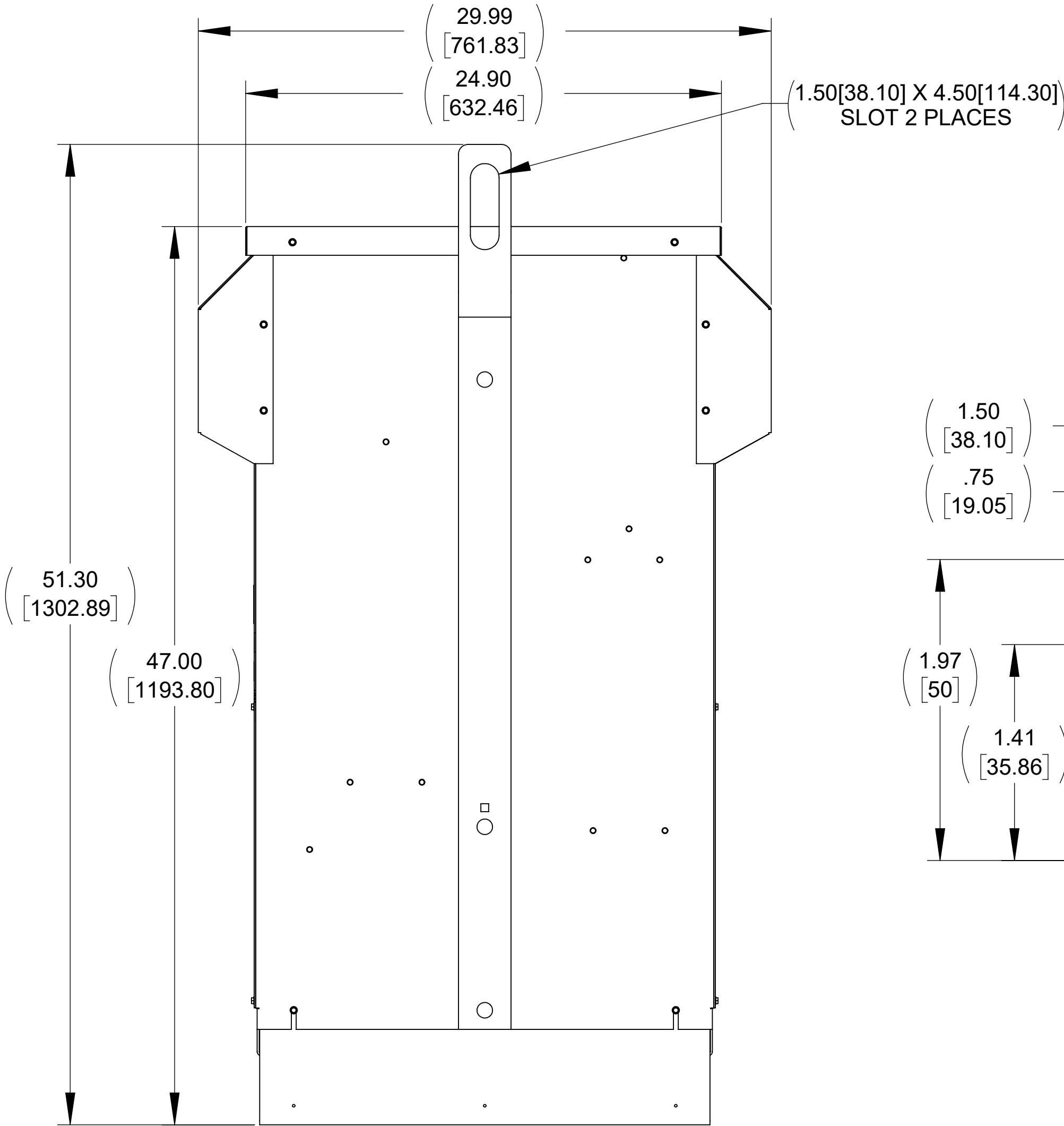
A



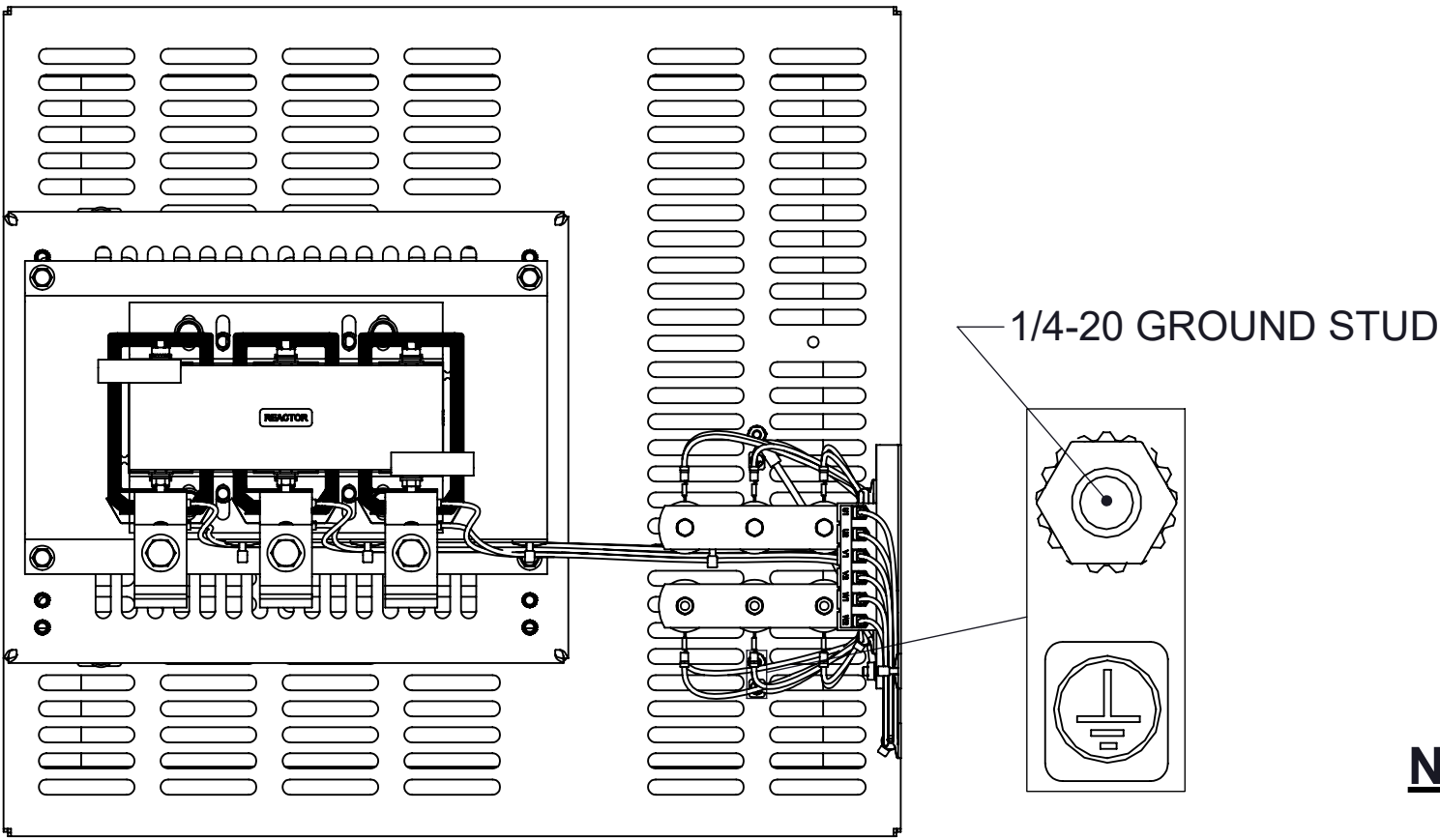
FRONT VIEW
(PANELS REMOVED)



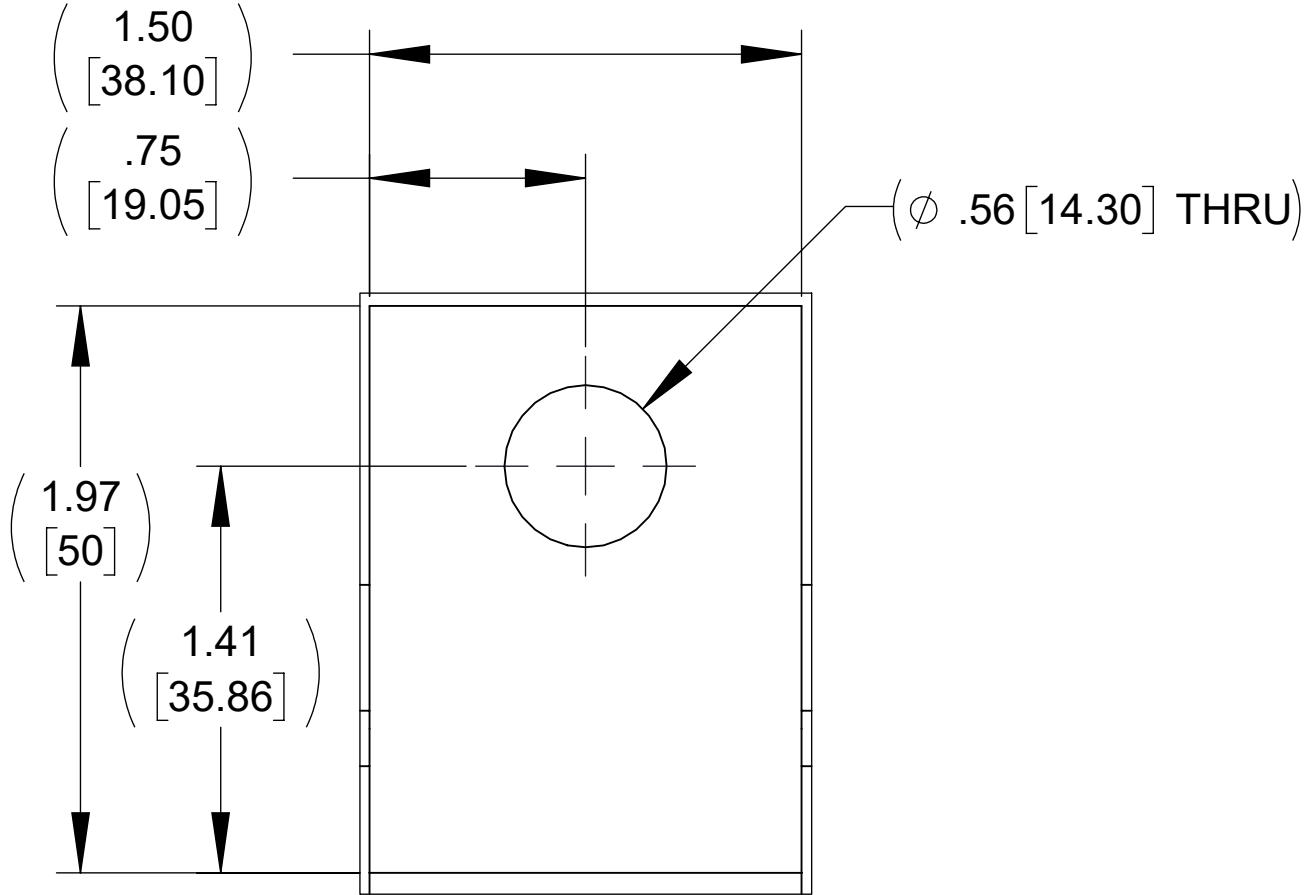
BOTTOM VIEW



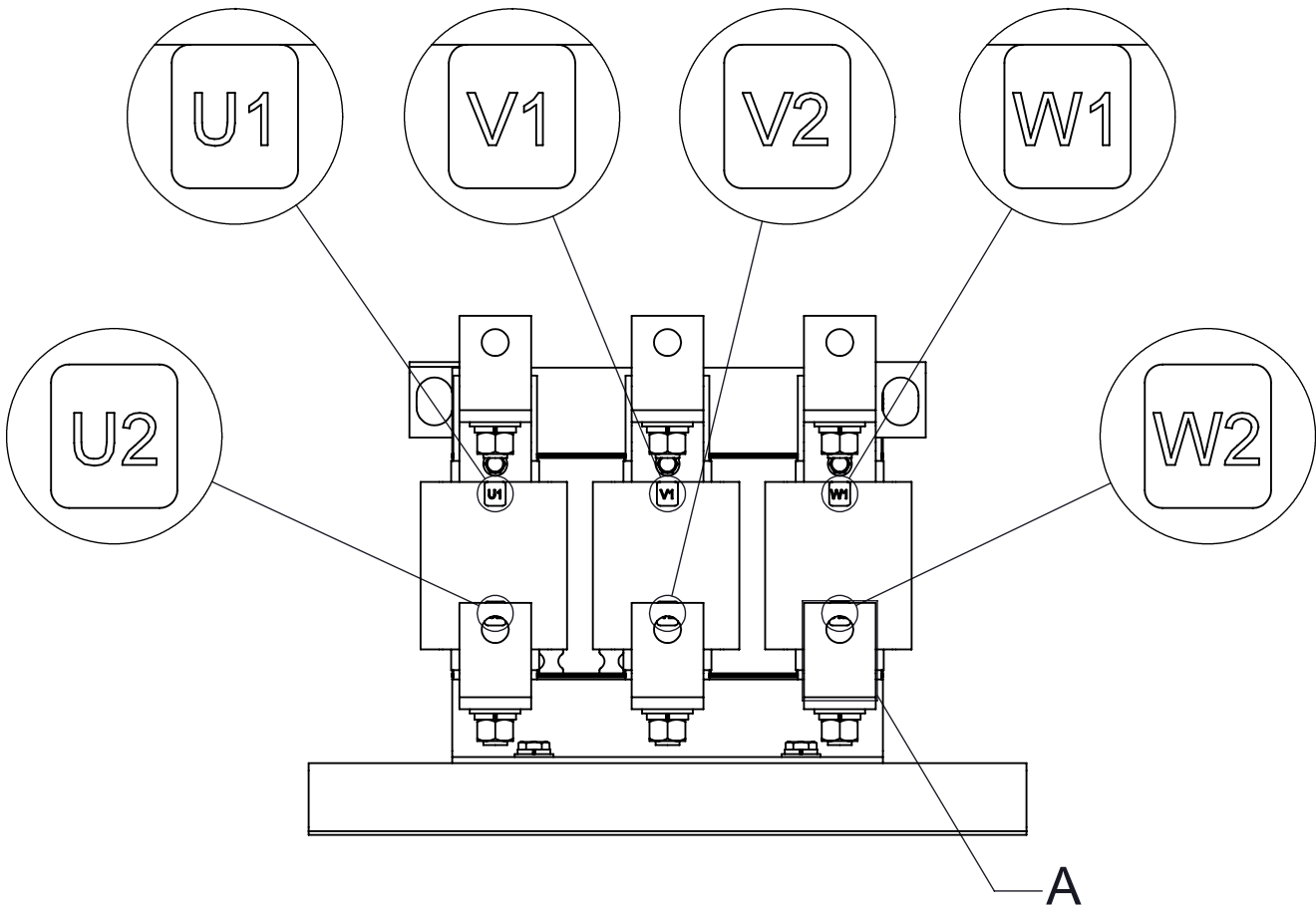
SIDE VIEW



TOP VIEW
(PANELS REMOVED)



DETAIL A
(6 PLACES)



CUSTOMER CONNECTION
DETAIL VIEW

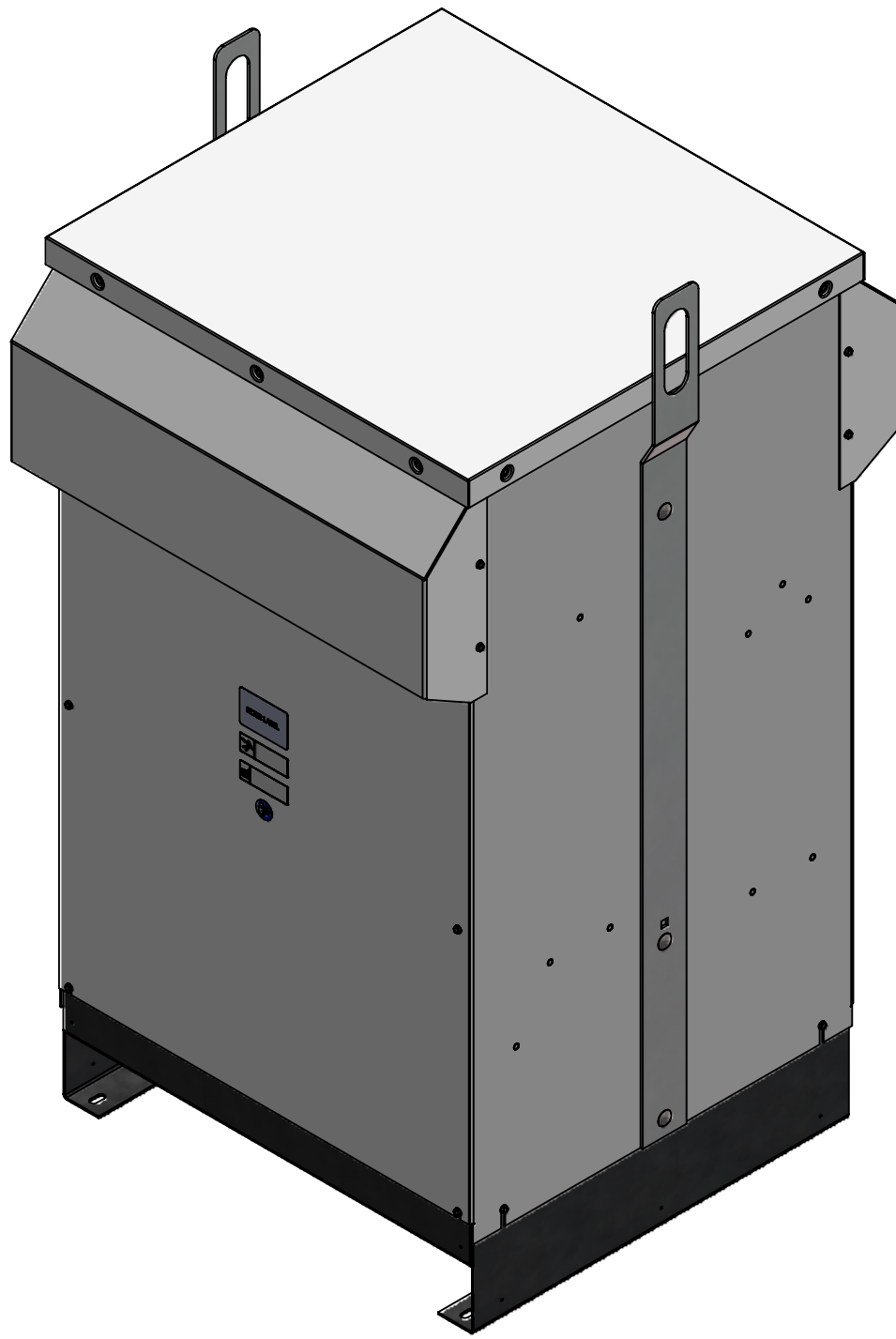
NOTES:

1. REFER TO USER MANUAL FOR COMPLETE INSTALLATION INSTRUCTIONS

THE COMPONENT, PART OR ASSEMBLY DESCRIBED IN THIS DOCUMENT MUST COMPLY WITH THE EU(EUROPEAN UNION) DIRECTIVE RoHS2		DRAWN BY: JD	DATE 08/25/21	CONFIDENTIAL AND PROPRIETARY INFORMATION THIS DOCUMENT CONTAINS CONFIDENTIAL AND PROPRIETARY INFORMATION OF MTE CORPORATION AND MAY NOT BE USED, COPIED OR DISCLOSED TO OTHERS EXCEPT WITH THE AUTHORIZED WRITTEN PERMISSION OF MTE CORPORATION	
CONTAINS <0.1% OF ANY SVHC BY WEIGHT PER REACH REGULATION		CHECKED BY: JD	DATE 11/12/21	DESCRIPTION DVRT E SERIES 600A 208-600V 2-4kHz FILTER, NEMA 3R	
UNLESS OTHERWISE SPECIFIED DIMENSIONS ARE IN INCHES [MM] TOLERANCES ARE: ANGLES: ± 1 ° 1 PLACE .X: ± .1 [2.5] 2 PLACE .XX: ± .03 [0.76] 3 PLACE .XXX: ± .010 [0.254]		ME APPROVED BY: DP	DATE 11/12/21		
		RE APPROVED BY: PY	DATE 11/15/21	SIZE D	DWG No. CD DVTW0600E
			SCALE 3:16	Sheet1	REV 01 SHEET 1 OF 1



N83 W13330 Leon Road
Menomonee Falls, WI 53051 USA
800.455.4683
262.253.8200



D

C

B

A