

APPROX. WEIGHT  
(LBS)  
24

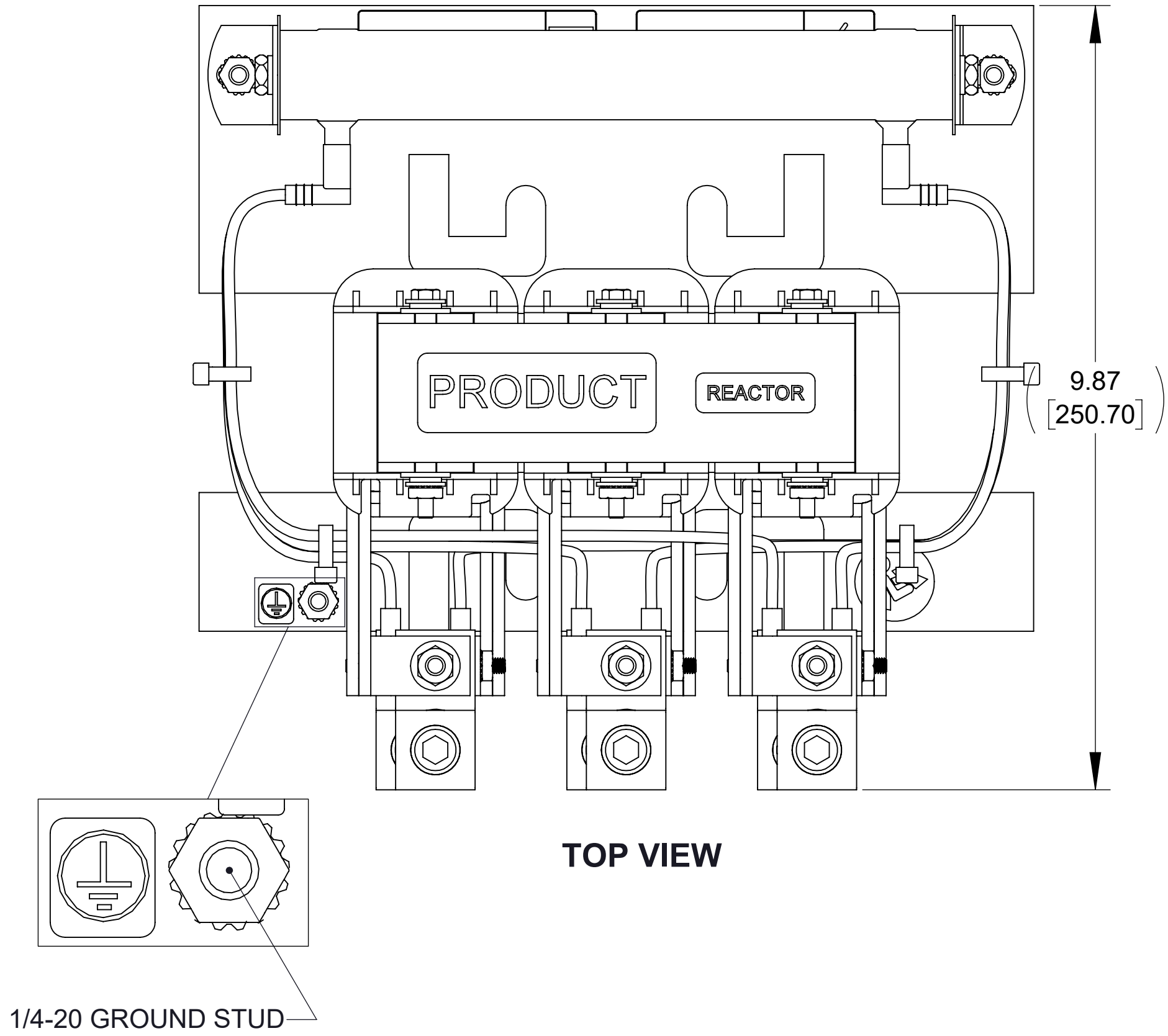
ECO No	DESCRIPTION	REV BY	DATE
M14098	ALL LEADS CHANGED TO BLACK	JD	11/15/21

D

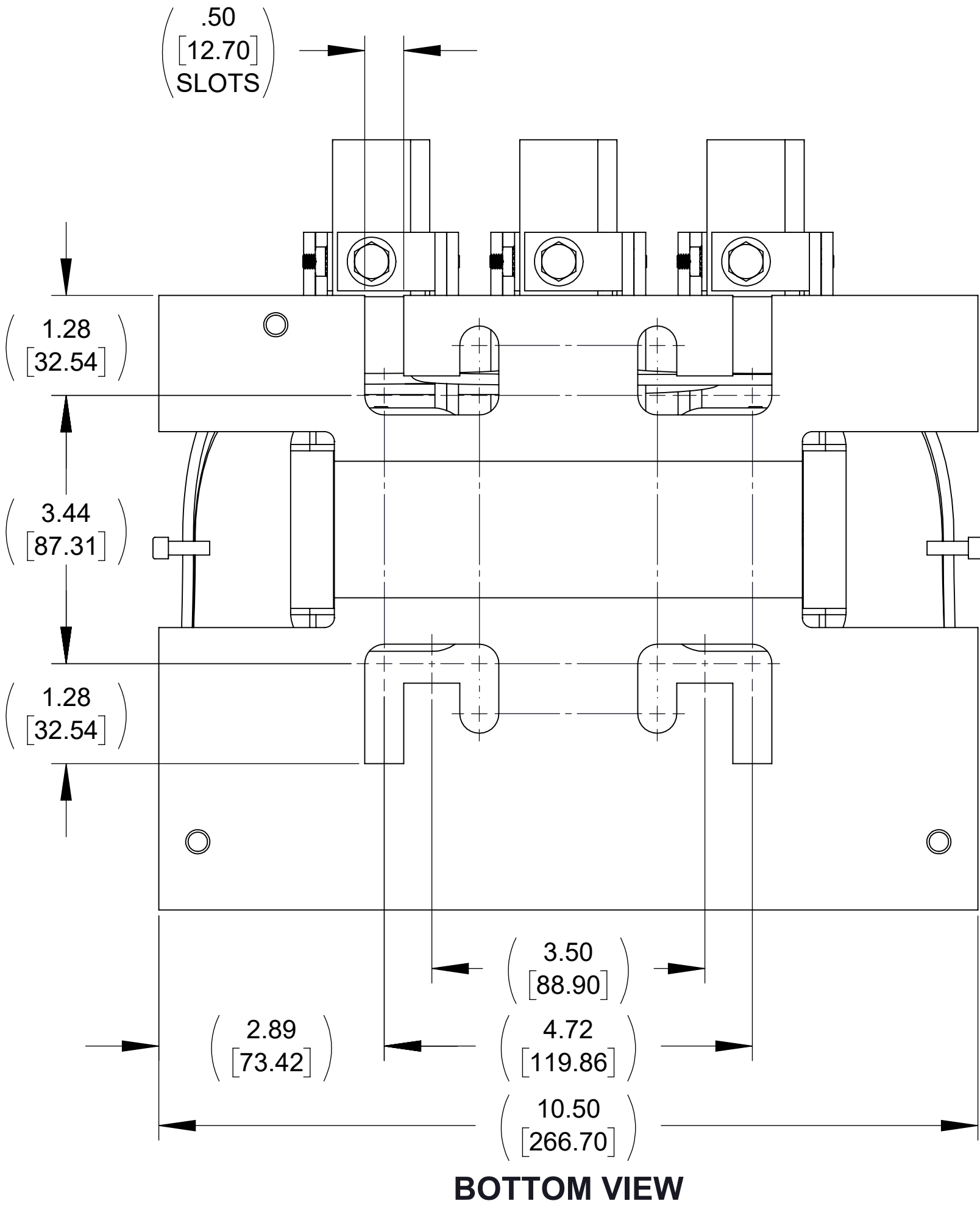
C

B

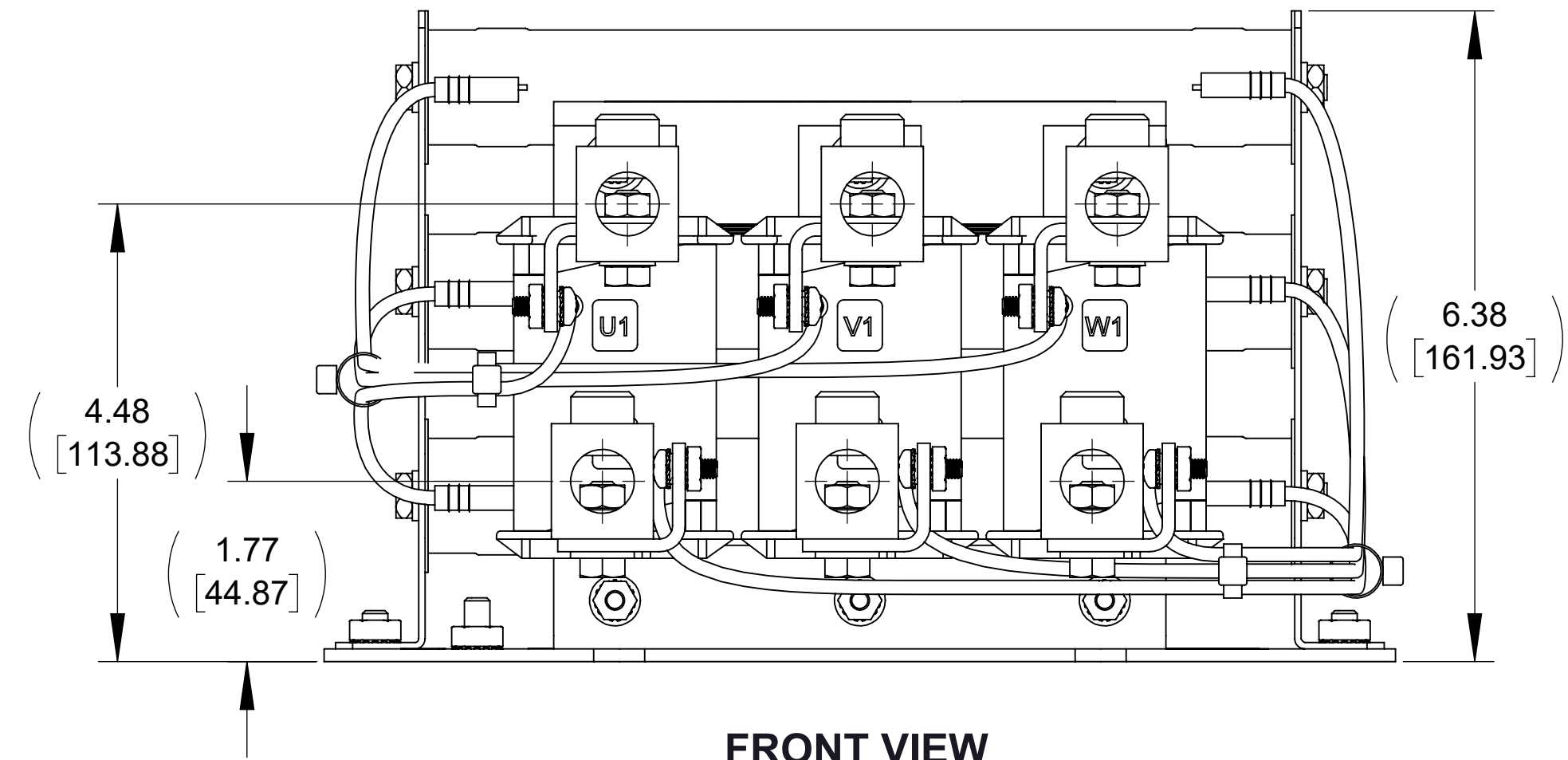
A



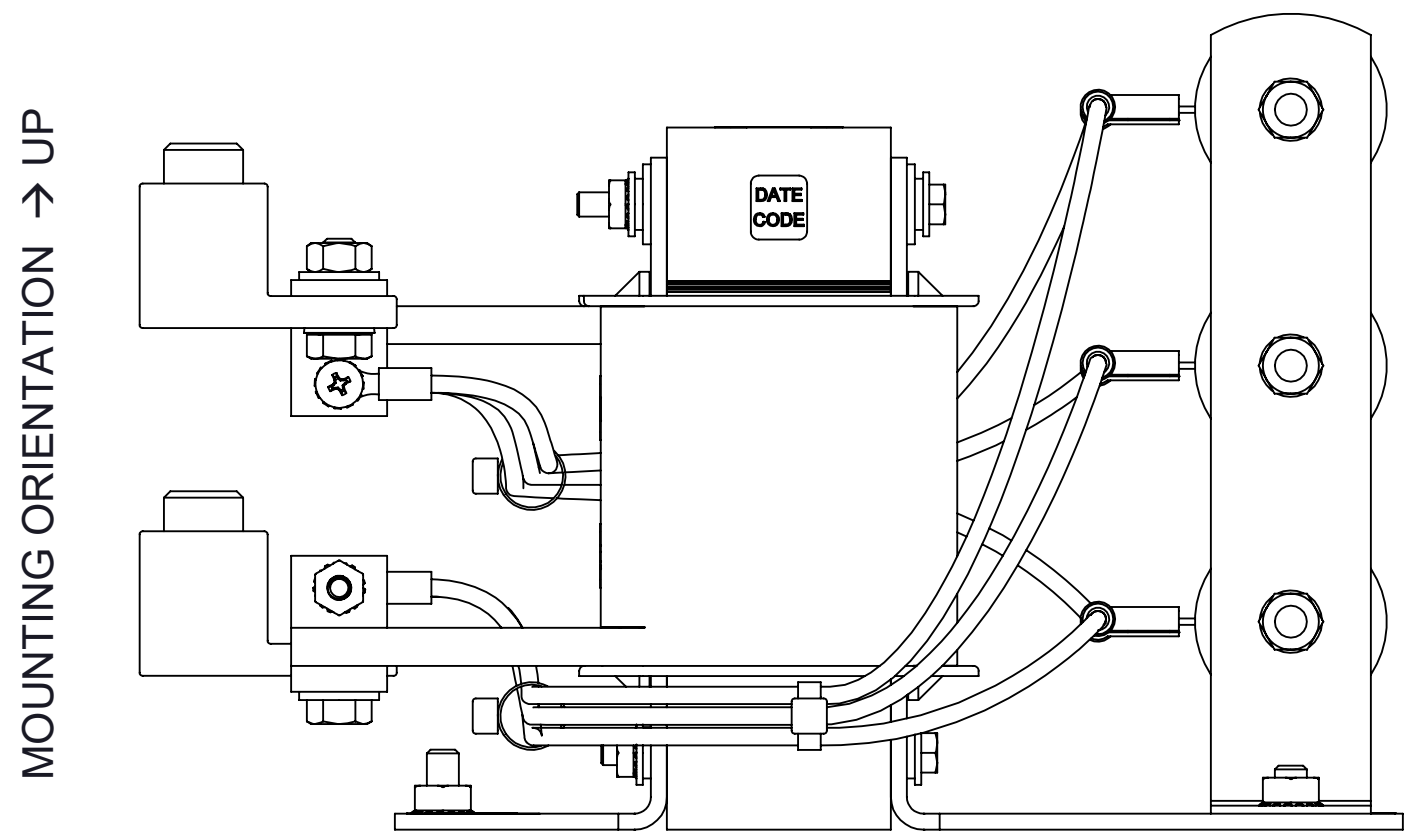
TOP VIEW



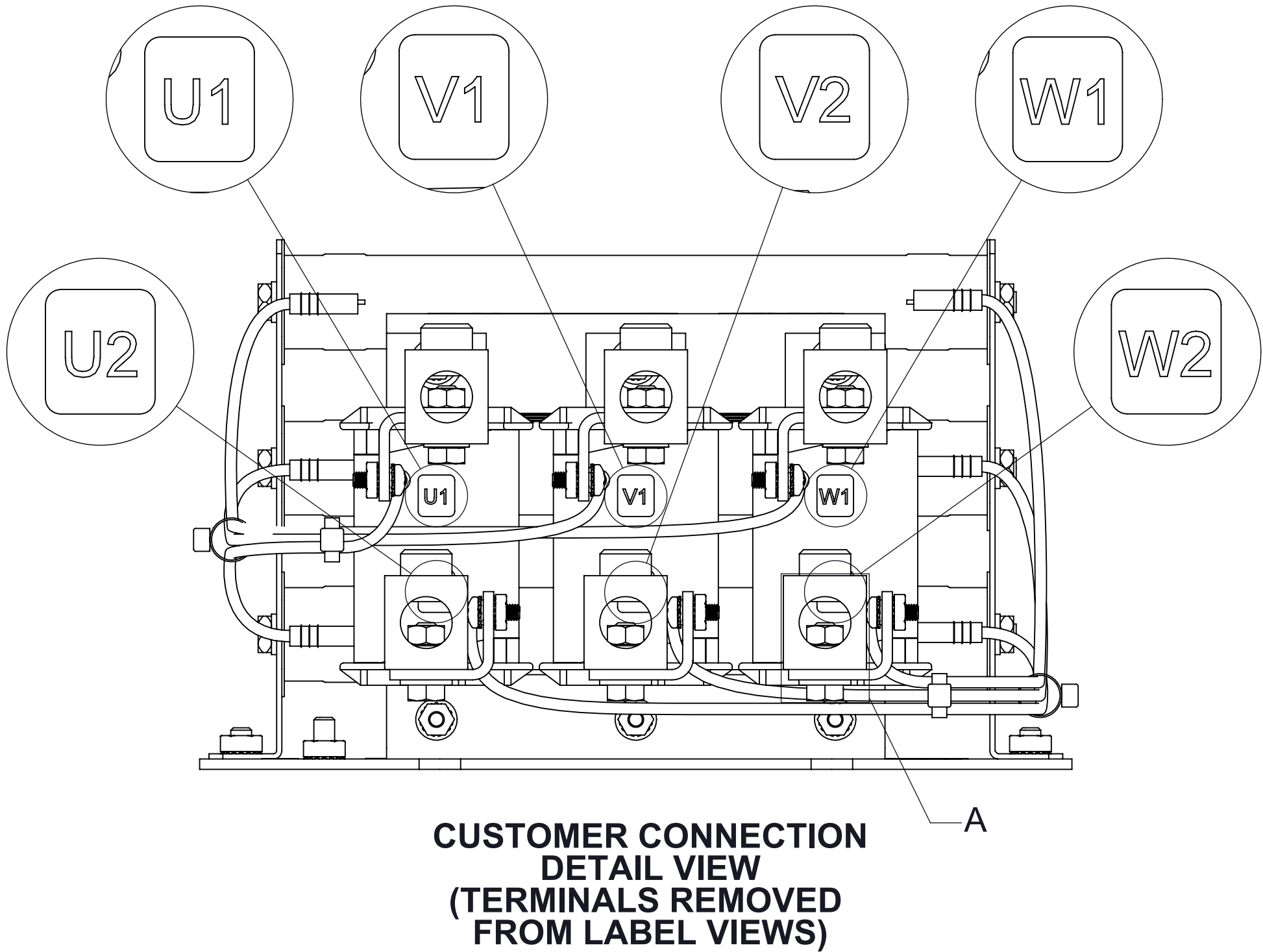
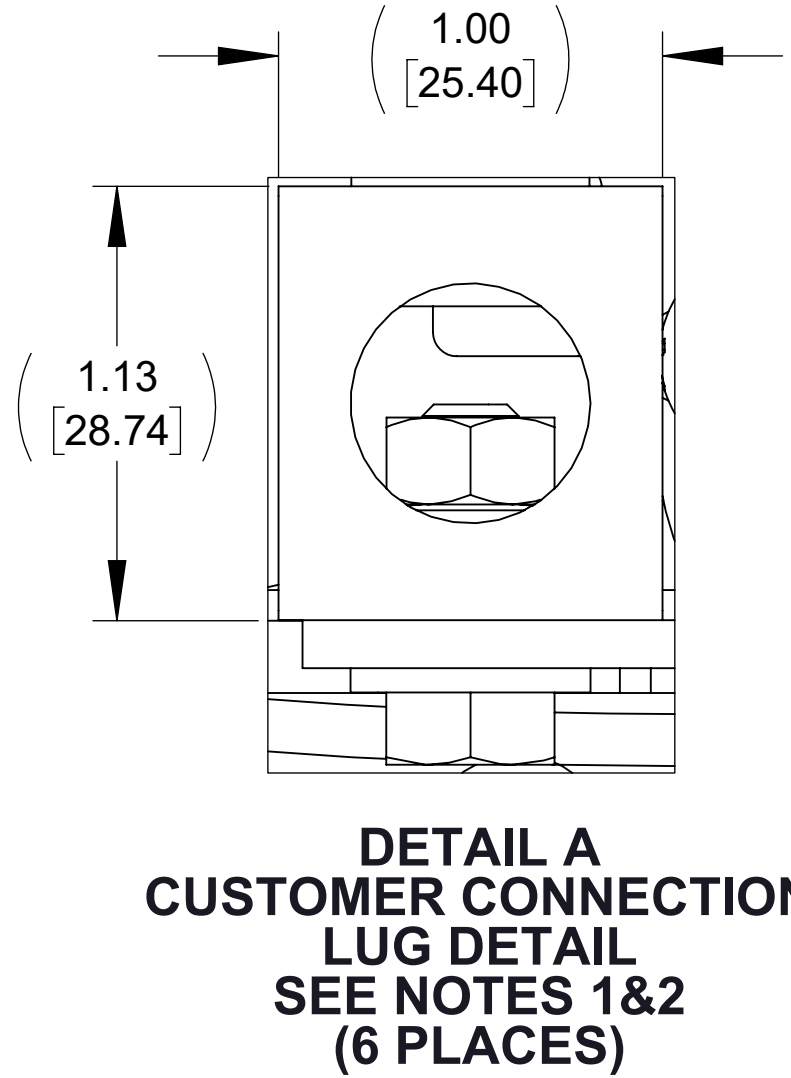
BOTTOM VIEW



FRONT VIEW



SIDE VIEW



- NOTES:**
1. TERMINAL WIRE RANGE: 6AWG-250MCM.
  2. TERMINAL SCREW TIGHTENING TORQUE: 275 IN.LBS.
  3. REFER TO USER MANUAL FOR COMPLETE INSTALLATION INSTRUCTIONS.

THE COMPONENT, PART OR ASSEMBLY DESCRIBED IN THIS DOCUMENT MUST COMPLY WITH THE EU(EUROPEAN UNION) DIRECTIVE RoHS2		DRAWN BY: JD	DATE 07/12/21	CONFIDENTIAL AND PROPRIETARY INFORMATION THIS DOCUMENT CONTAINS CONFIDENTIAL AND PROPRIETARY INFORMATION OF MTE CORPORATION AND MAY NOT BE USED, COPIED OR DISCLOSED TO OTHERS EXCEPT WITH THE AUTHORIZED WRITTEN PERMISSION OF MTE CORPORATION	
CONTAINS <0.1% OF ANY SVHC BY WEIGHT PER REACH REGULATION		CHECKED BY: JD	DATE 11/15/21	DESCRIPTION  DVDT E SERIES 160A 208-600V 2-4kHz FILTER, OPEN PANEL	
UNLESS OTHERWISE SPECIFIED DIMENSIONS ARE IN INCHES [MM] TOLERANCES ARE:  ANGLES: ± 1 °  1 PLACE .X: ± .1 [2.5]  2 PLACE .XX: ± .03 [0.76]  3 PLACE .XXX: ± .010 [0.254]		ME APPROVED BY: DP	DATE 11/15/21		
		RE APPROVED BY: PY	DATE 11/16/21	SIZE D	DWG No. CD DVTP0160E
			SCALE 2:3	Sheet1	REV 01



N83 W13330 Leon Road  
Menomonee Falls, WI 53051 USA  
800.455.4693  
262.253.8200

A