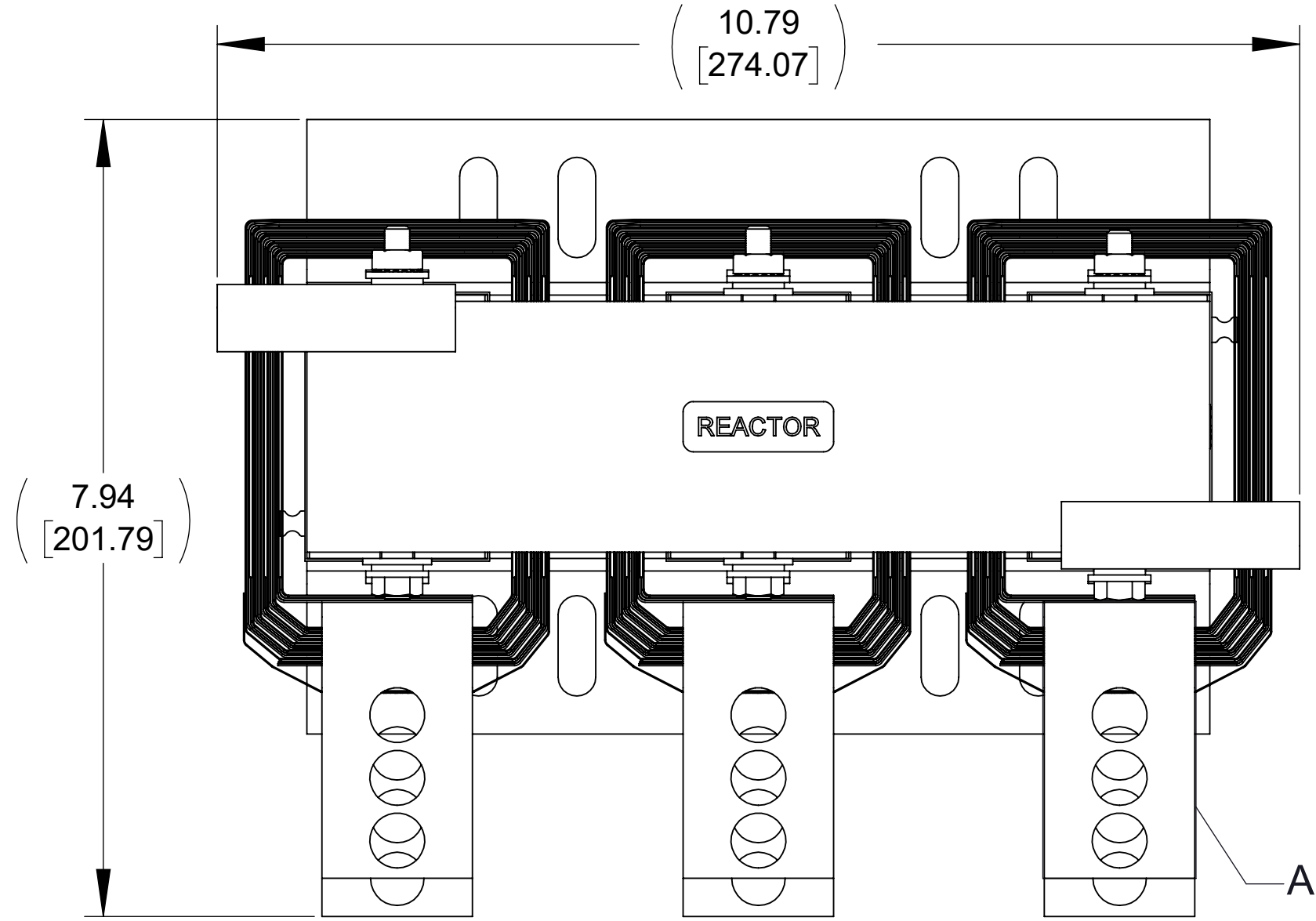
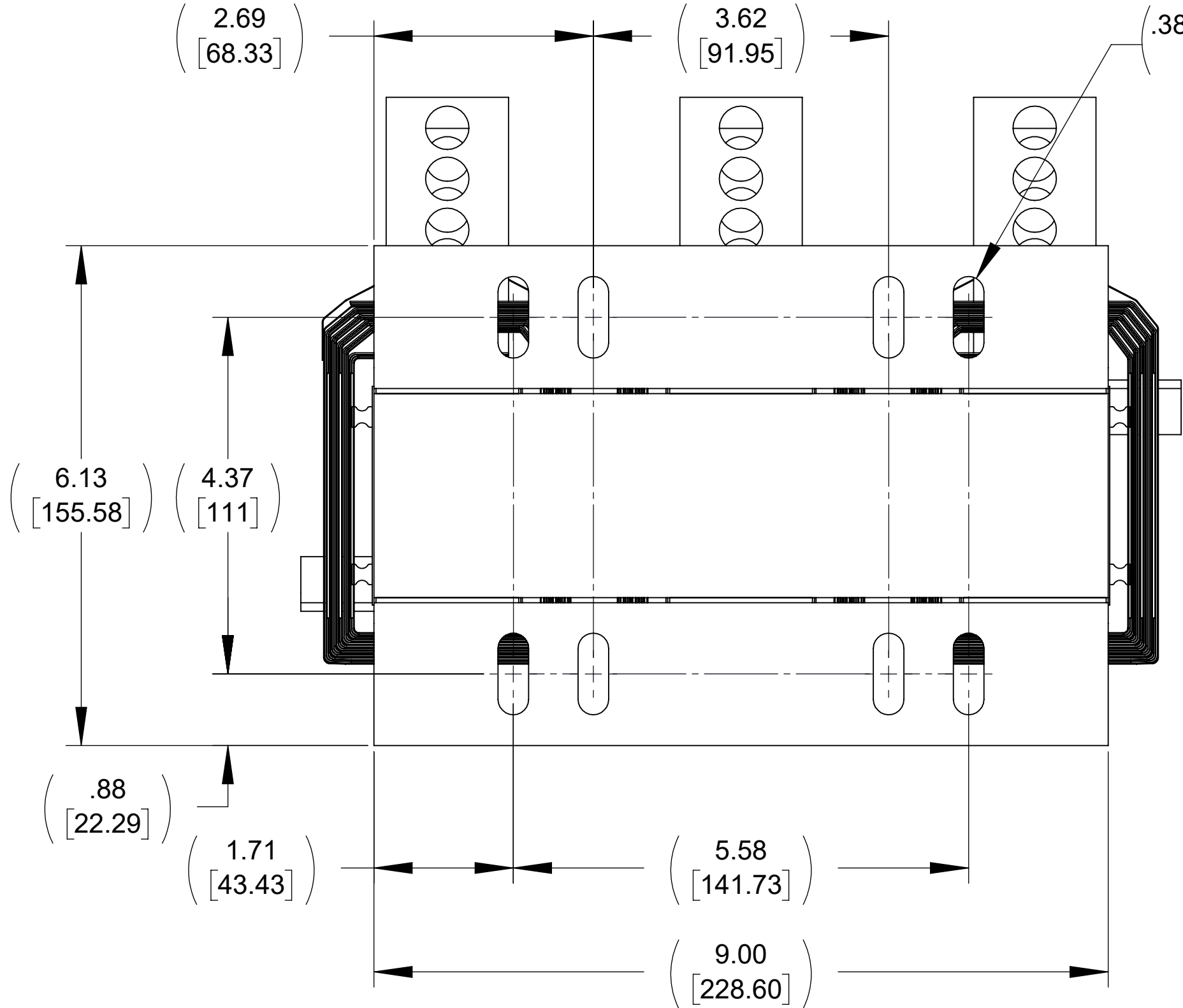


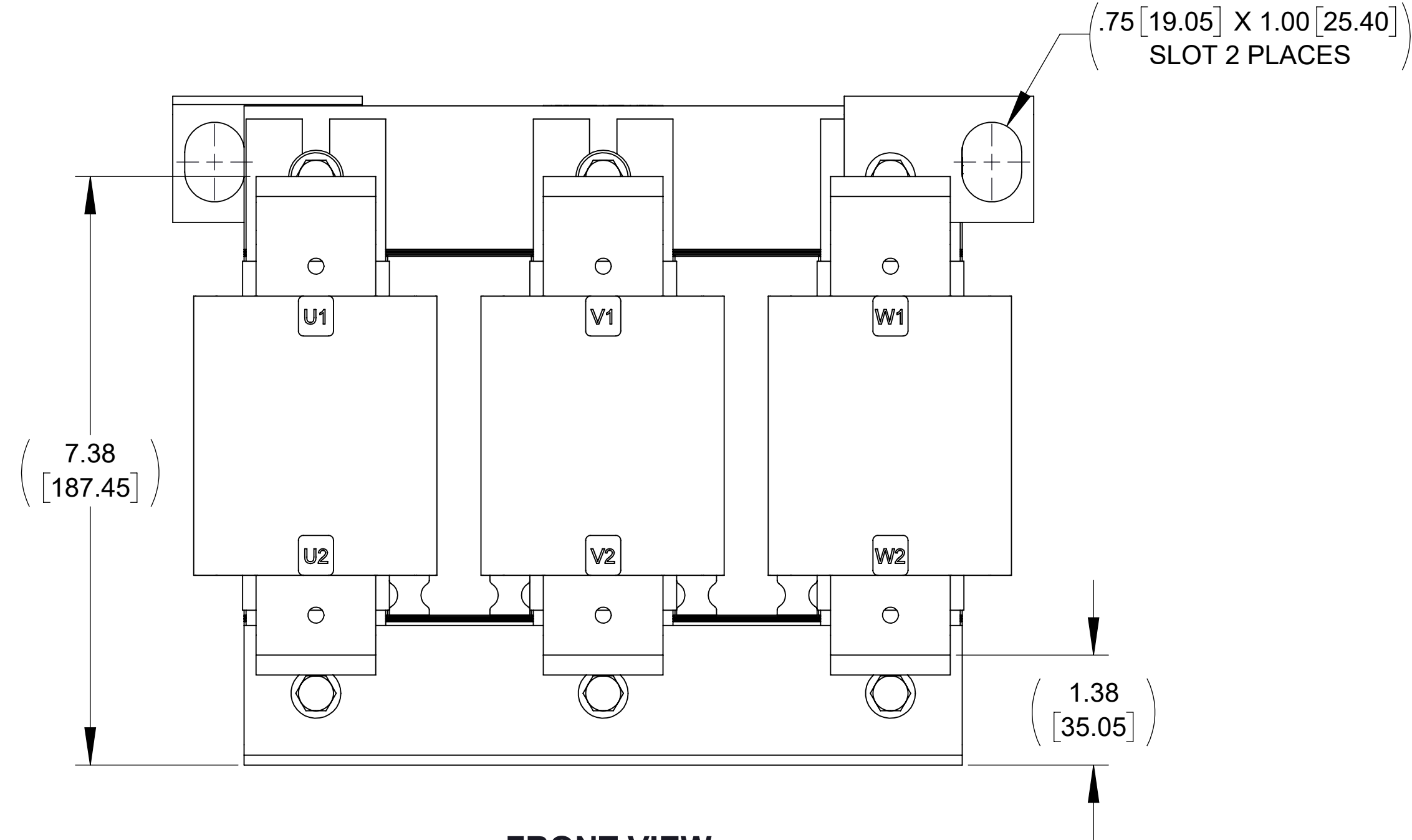
APPROX. WEIGHT  
(LBS)  
62



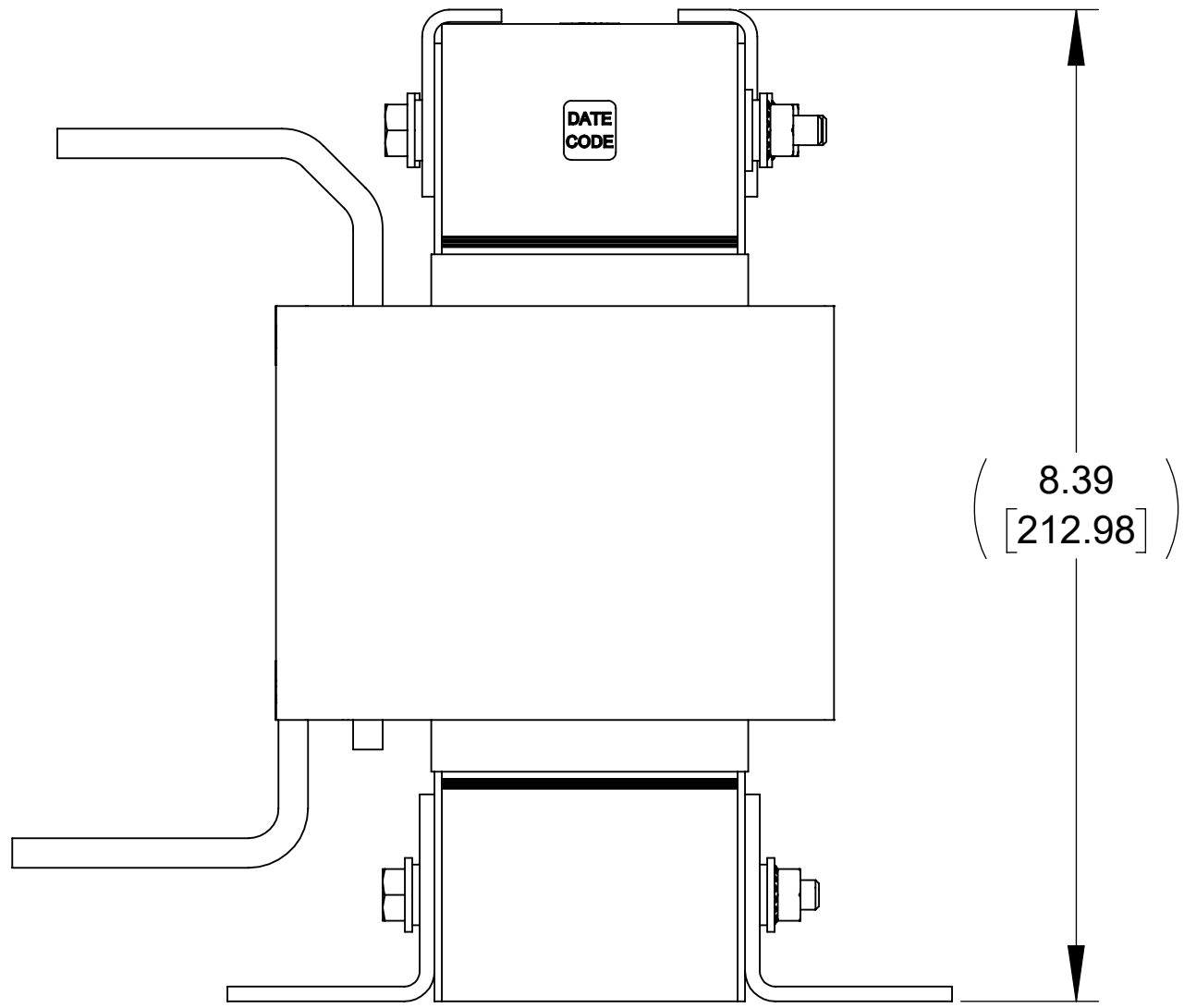
TOP VIEW



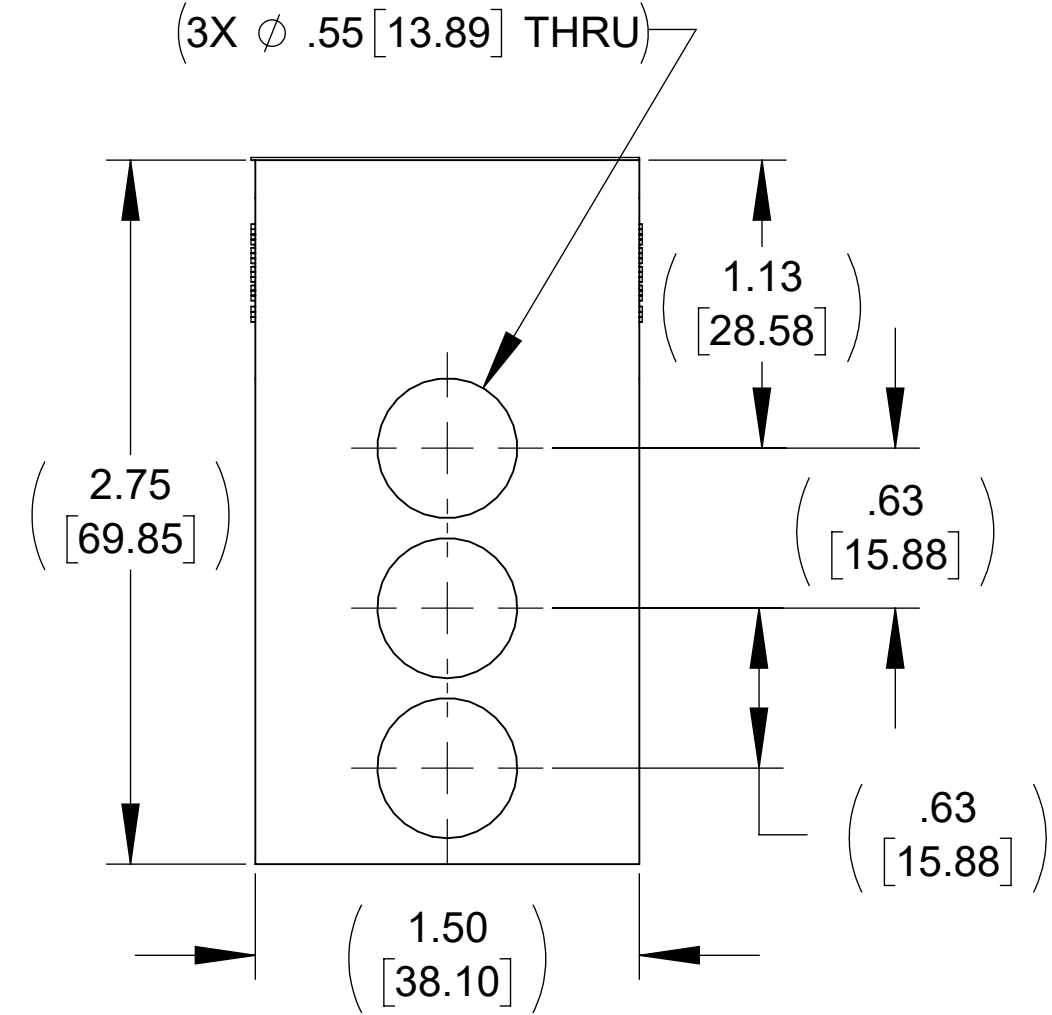
BOTTOM VIEW



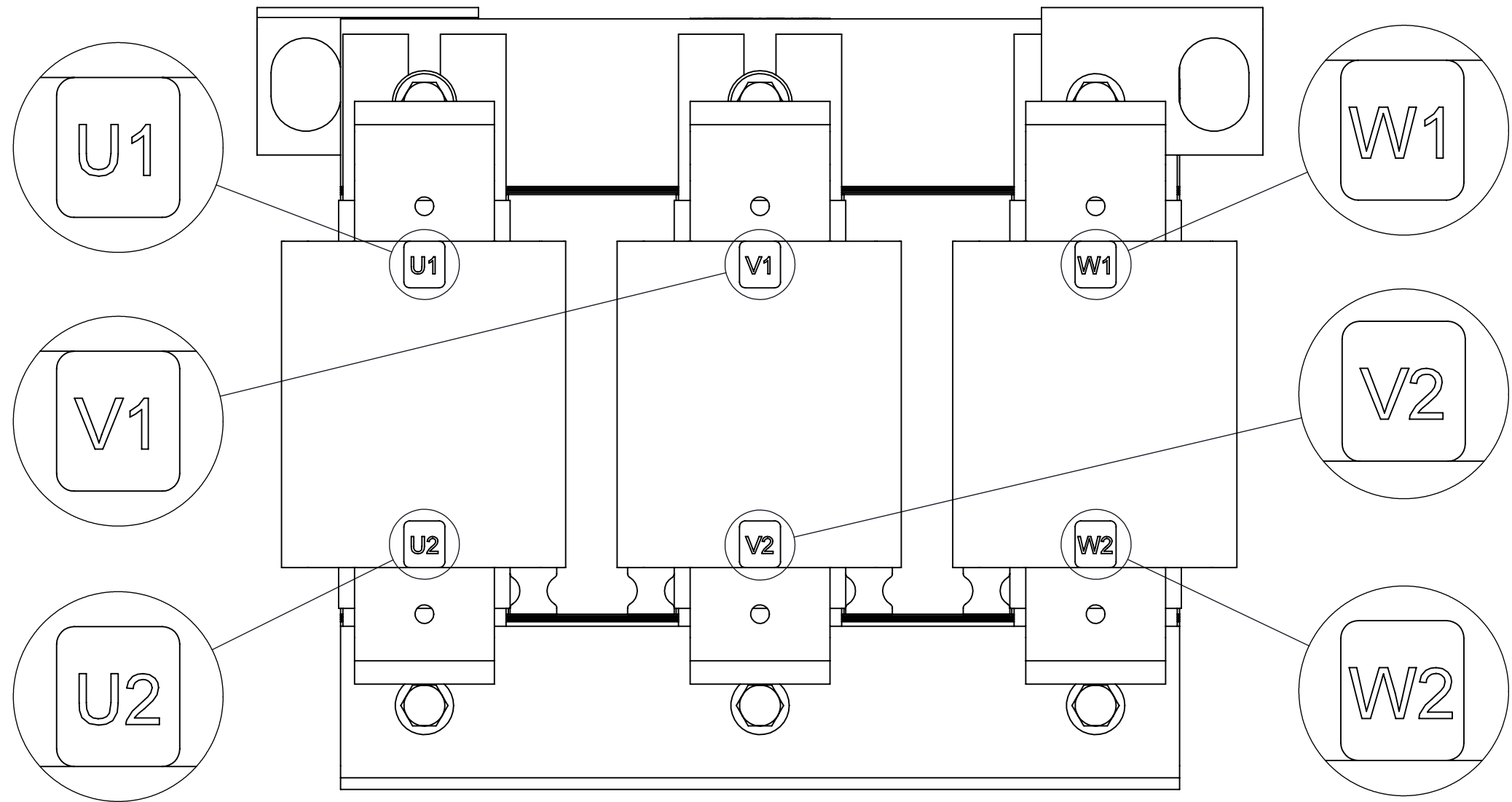
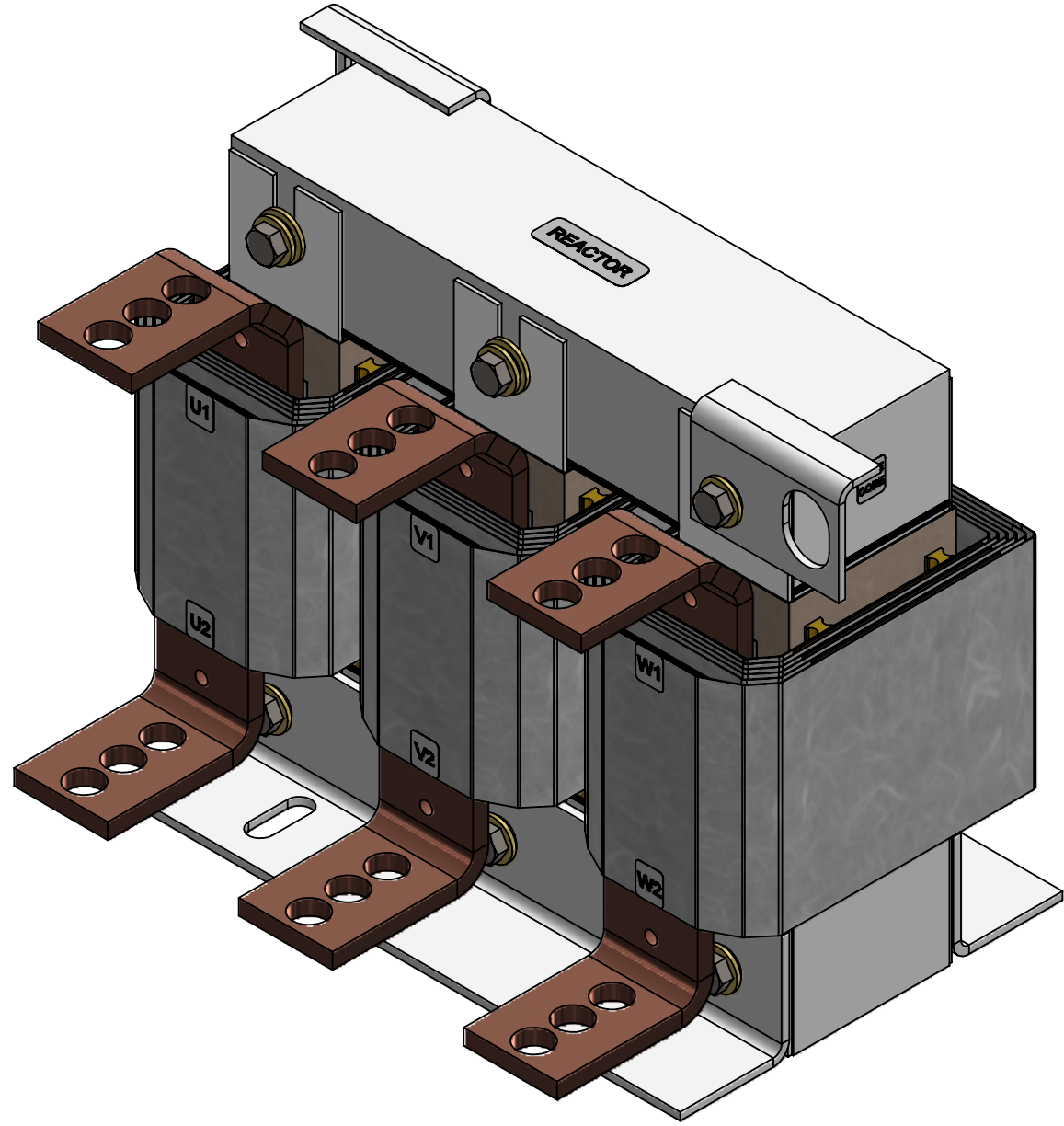
FRONT VIEW



SIDE VIEW



DETAIL A  
(6 PLACES)



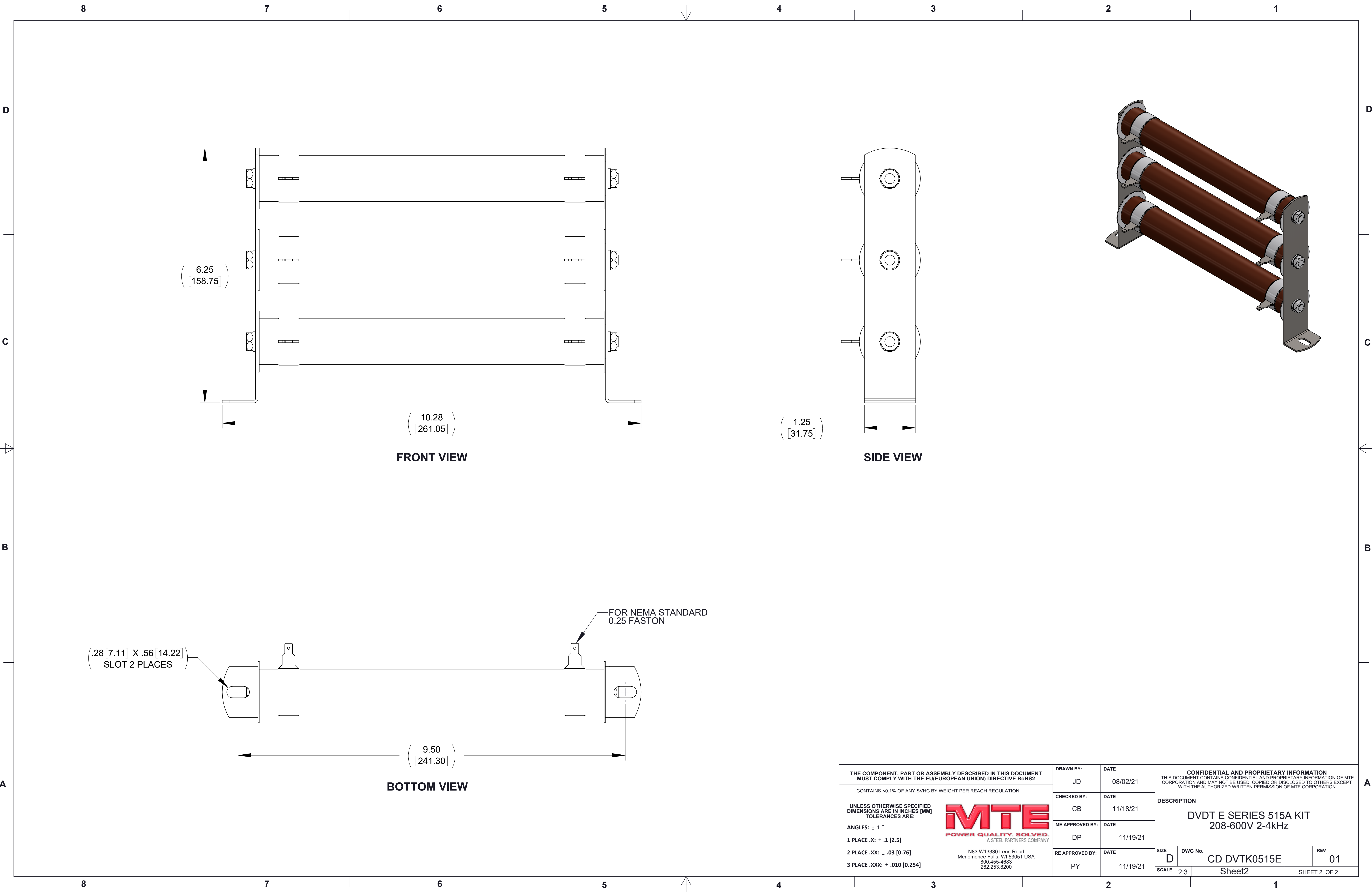
CUSTOMER CONNECTION  
DETAIL VIEW

NOTES:

1. REFER TO USER MANUAL FOR COMPLETE INSTALLATION INSTRUCTIONS.
2. FILTER INCLUDES: RESISTOR-040 (QTY. 2).

THE COMPONENT, PART OR ASSEMBLY DESCRIBED IN THIS DOCUMENT MUST COMPLY WITH THE EU(EUROPEAN UNION) DIRECTIVE RoHS2		DRAWN BY: JD	DATE 08/02/21	CONFIDENTIAL AND PROPRIETARY INFORMATION THIS DOCUMENT CONTAINS CONFIDENTIAL AND PROPRIETARY INFORMATION OF MTE CORPORATION AND MAY NOT BE USED, COPIED OR DISCLOSED TO OTHERS EXCEPT WITH THE AUTHORIZED WRITTEN PERMISSION OF MTE CORPORATION	
CONTAINS <0.1% OF ANY SVHC BY WEIGHT PER REACH REGULATION		CHECKED BY: CB	DATE 11/18/21	DESCRIPTION DVDT E SERIES 515A KIT 208-600V 2-4kHz	
UNLESS OTHERWISE SPECIFIED DIMENSIONS ARE IN INCHES [MM] TOLERANCES ARE:  ANGLES: ± 1 °  1 PLACE .X: ± .1 [2.5]  2 PLACE .XX: ± .03 [0.76]  3 PLACE .XXX: ± .010 [0.254]		ME APPROVED BY: DP	DATE 11/19/21	SIZE D	
		RE APPROVED BY: PY	DATE 11/19/21	DWG No. CD DVTK0515E	
		SCALE 2:3		REV 01	
				Sheet1	
				SHEET 1 OF 2	





THE COMPONENT, PART OR ASSEMBLY DESCRIBED IN THIS DOCUMENT MUST COMPLY WITH THE EU(EUROPEAN UNION) DIRECTIVE RoHS2		DRAWN BY:		DATE		CONFIDENTIAL AND PROPRIETARY INFORMATION THIS DOCUMENT CONTAINS CONFIDENTIAL AND PROPRIETARY INFORMATION OF MTE CORPORATION AND MAY NOT BE USED, COPIED OR DISCLOSED TO OTHERS EXCEPT WITH THE AUTHORIZED WRITTEN PERMISSION OF MTE CORPORATION			
		JD		08/02/21					
CONTAINS <0.1% OF ANY SVHC BY WEIGHT PER REACH REGULATION		CHECKED BY:		DATE		DESCRIPTION			
<div>UNLESS OTHERWISE SPECIFIED DIMENSIONS ARE IN INCHES [MM] TOLERANCES ARE:</div> <div>ANGLES: ± 1 °</div> <div>1 PLACE .X: ± .1 [2.5]</div> <div>2 PLACE .XX: ± .03 [0.76]</div> <div>3 PLACE .XXX: ± .010 [0.254]</div> <div><div><div>MTE</div><div>POWER QUALITY. SOLVED.</div><div>A STEEL PARTNERS COMPANY</div></div><div>N83 W13330 Leon Road Menomonee Falls, WI 53051 USA 800.455-4683 262.253.8200</div></div>		CB		11/18/21		DVDT E SERIES 515A KIT 208-600V 2-4kHz			
		ME APPROVED BY:		DATE					
		DP		11/19/21					
		RE APPROVED BY:		DATE		SIZE		DWG No.	
PY		11/19/21		D		CD DVTK0515E		01	
				SCALE 2:3		Sheet2		SHEET 2 OF 2	