

APPROX. WEIGHT
(LBS)
22

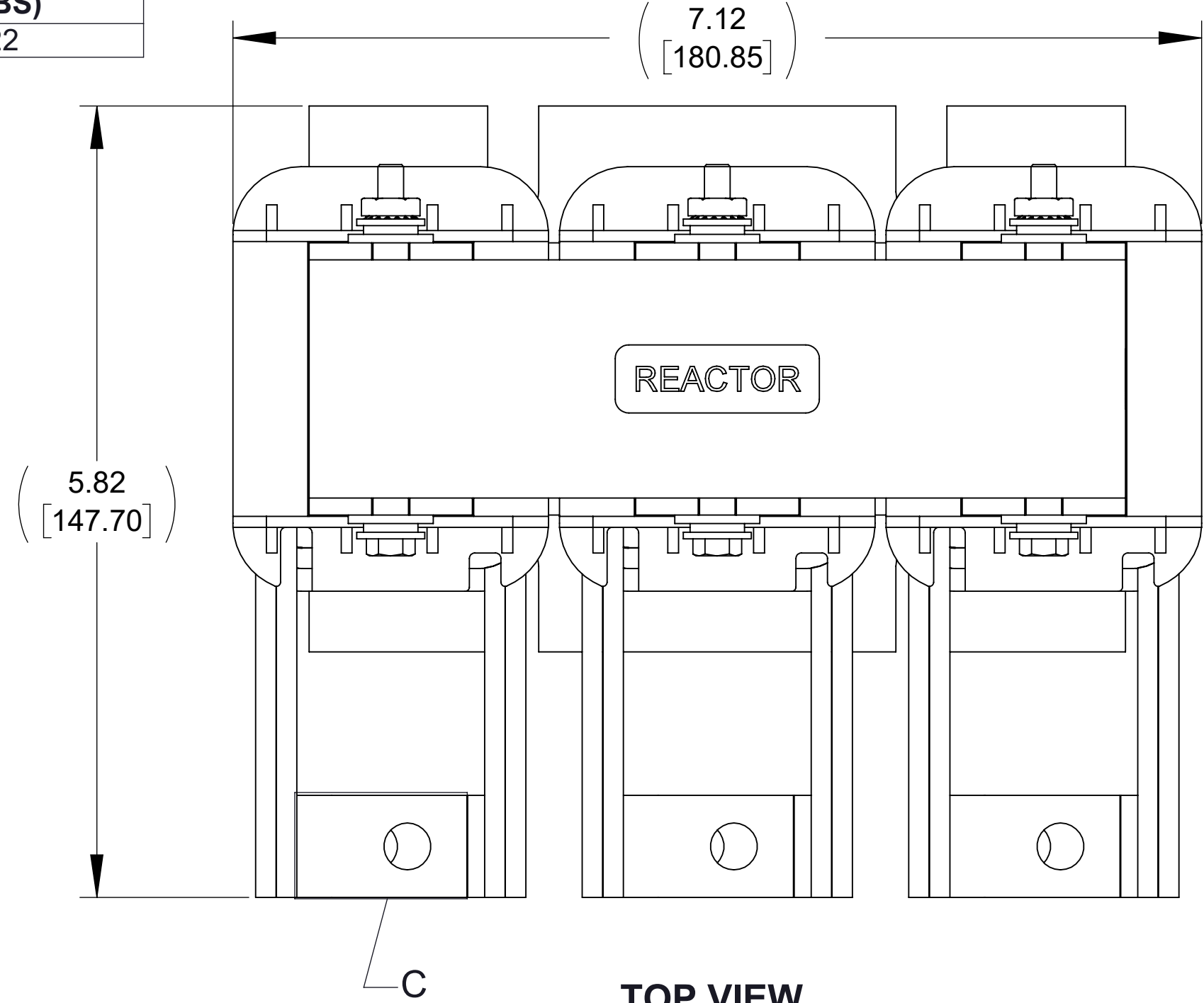
ECO No	DESCRIPTION	REV BY	DATE
M14113	ADDED RESISTOR DETAIL SHEET 2	CB	11/18/21

D

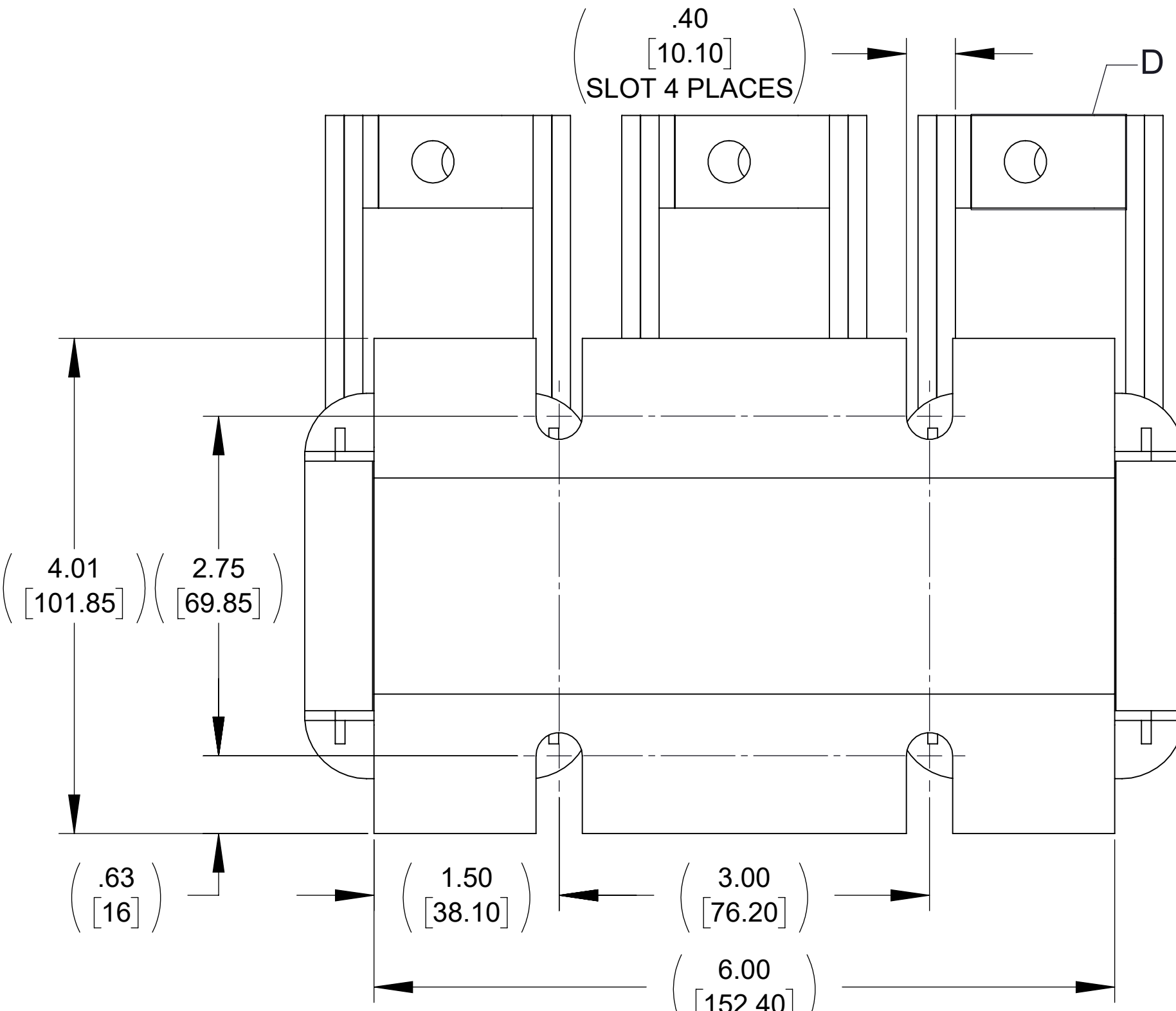
C

B

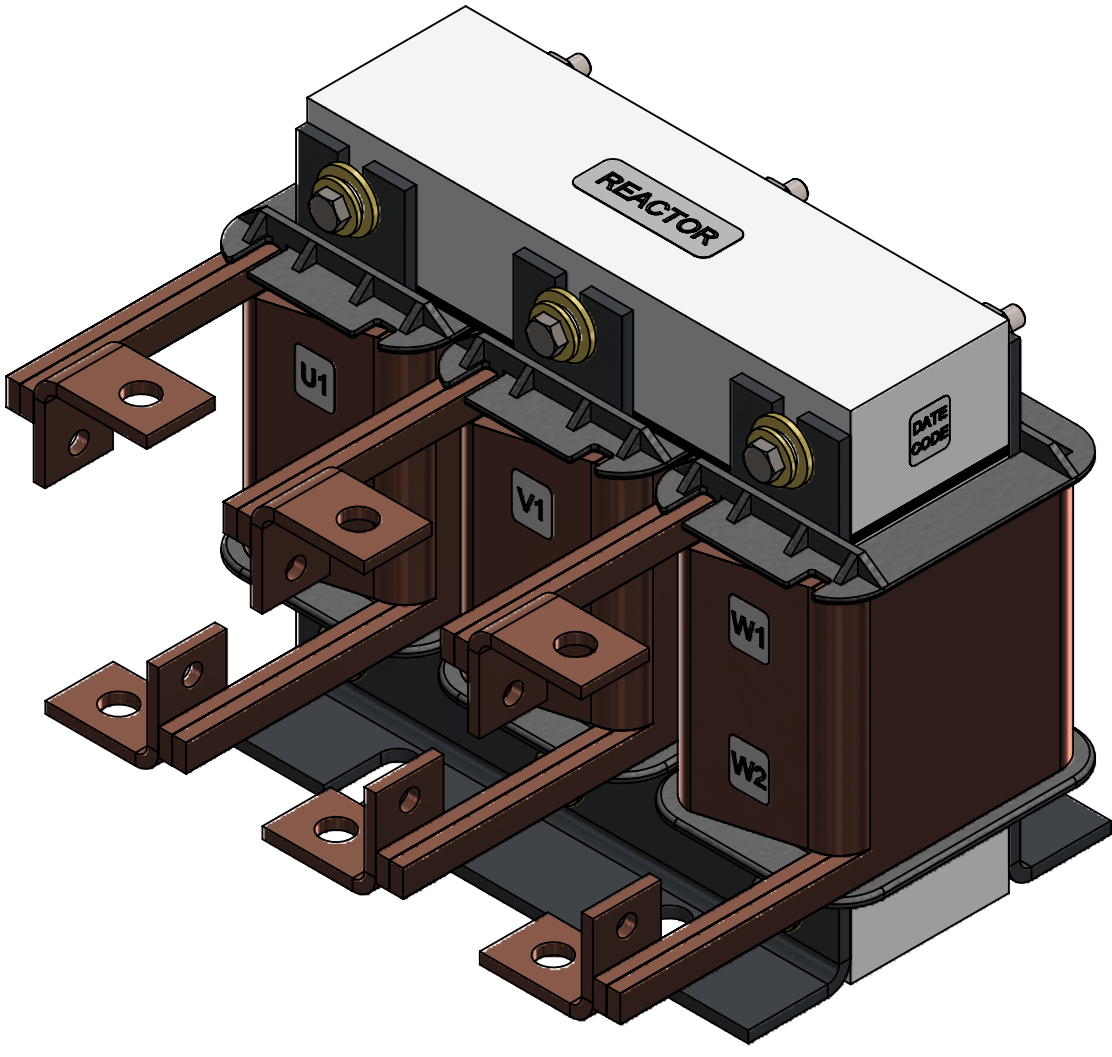
A



TOP VIEW



BOTTOM VIEW

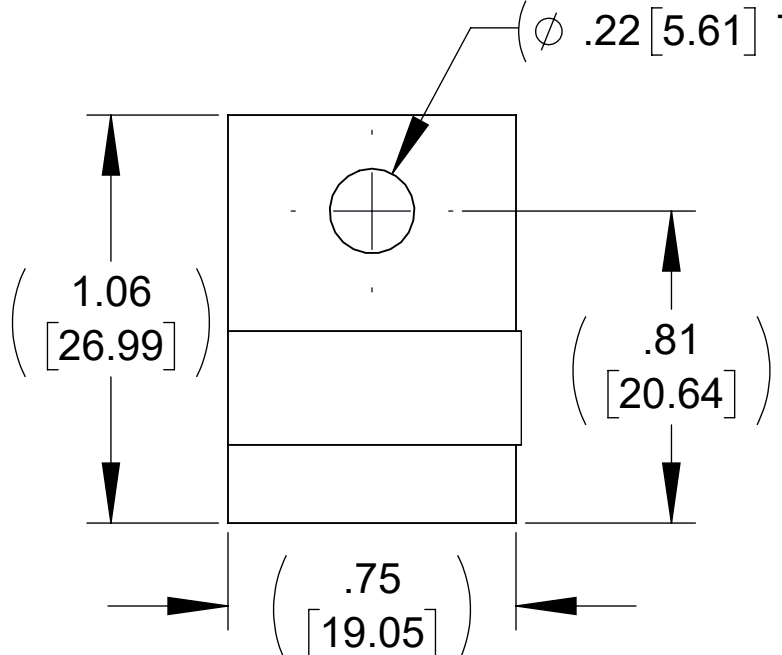


D

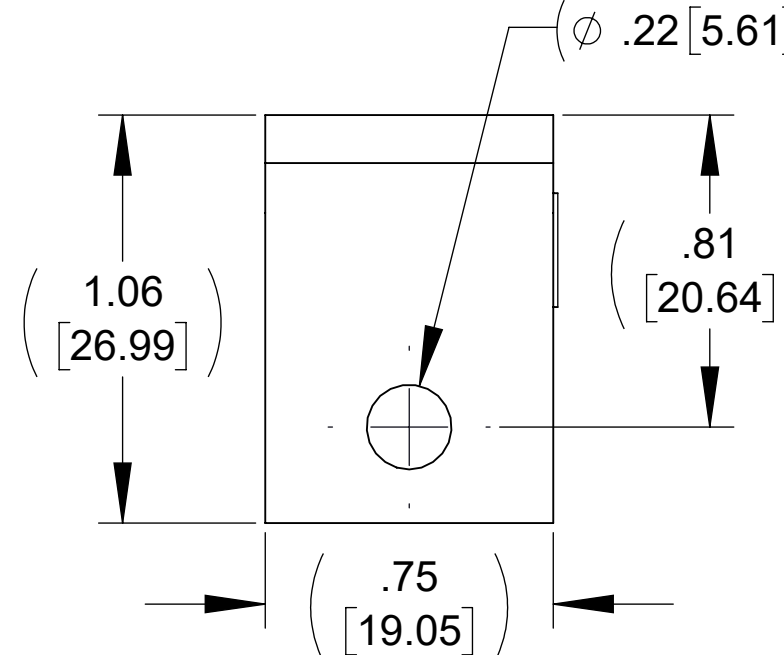
C

B

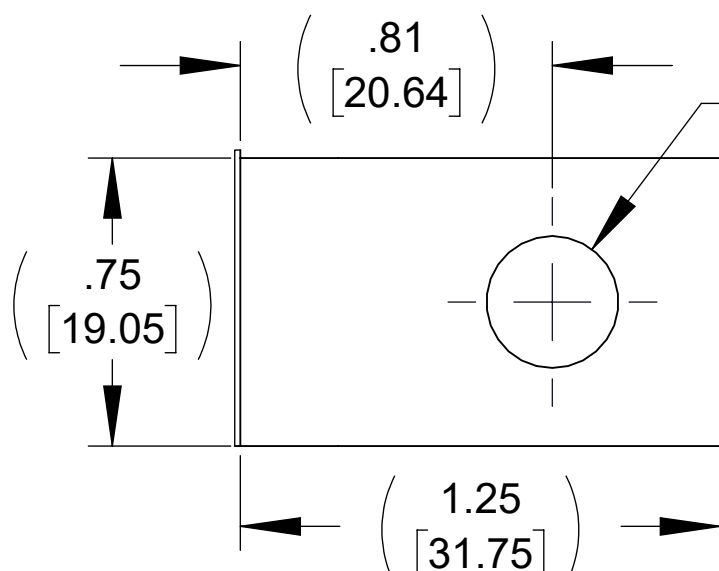
A



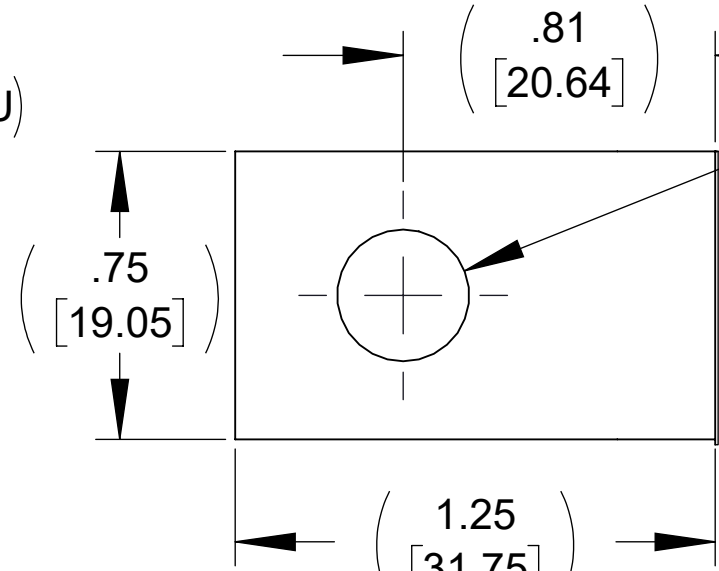
DETAIL A
(3 PLACES)



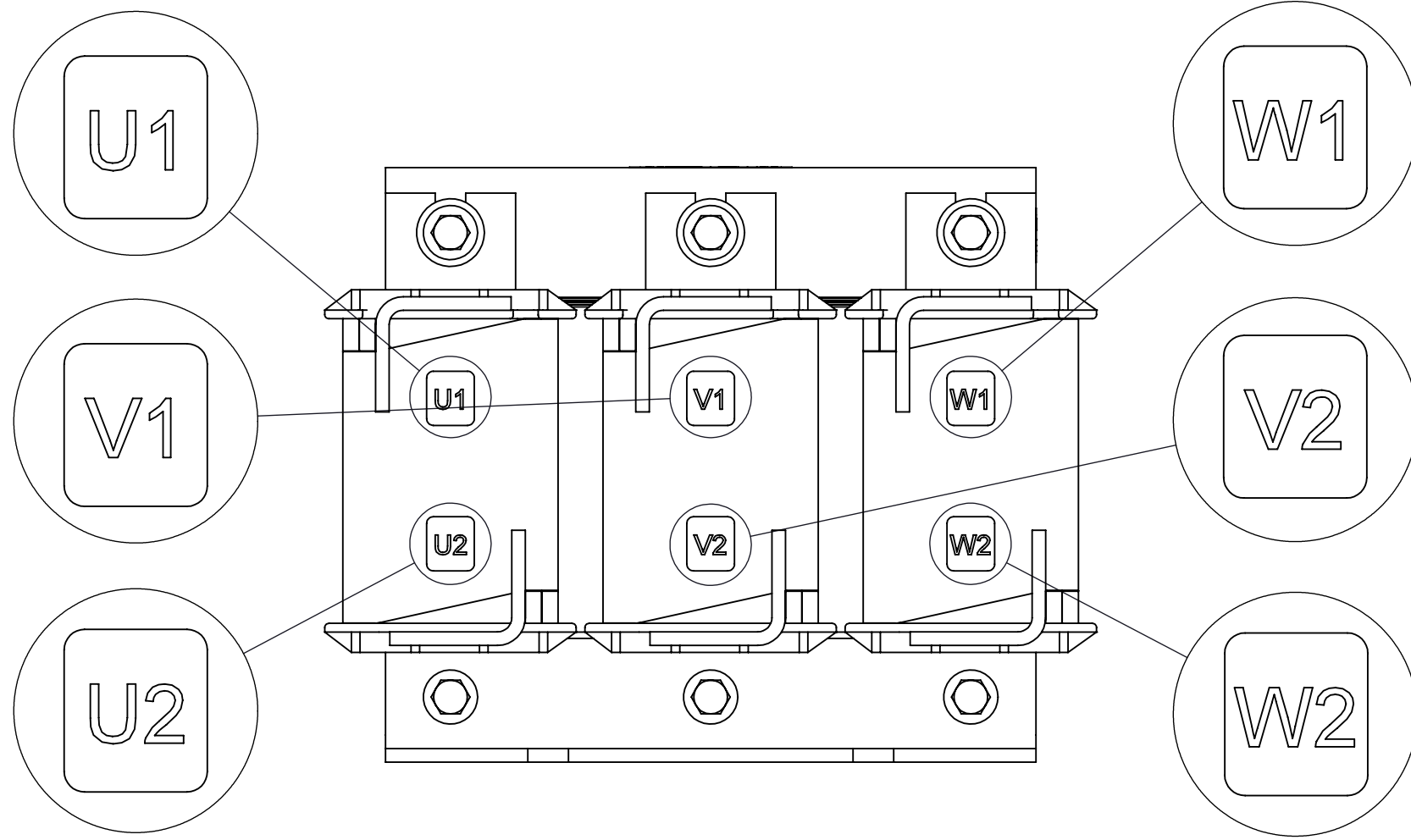
DETAIL B
(3 PLACES)



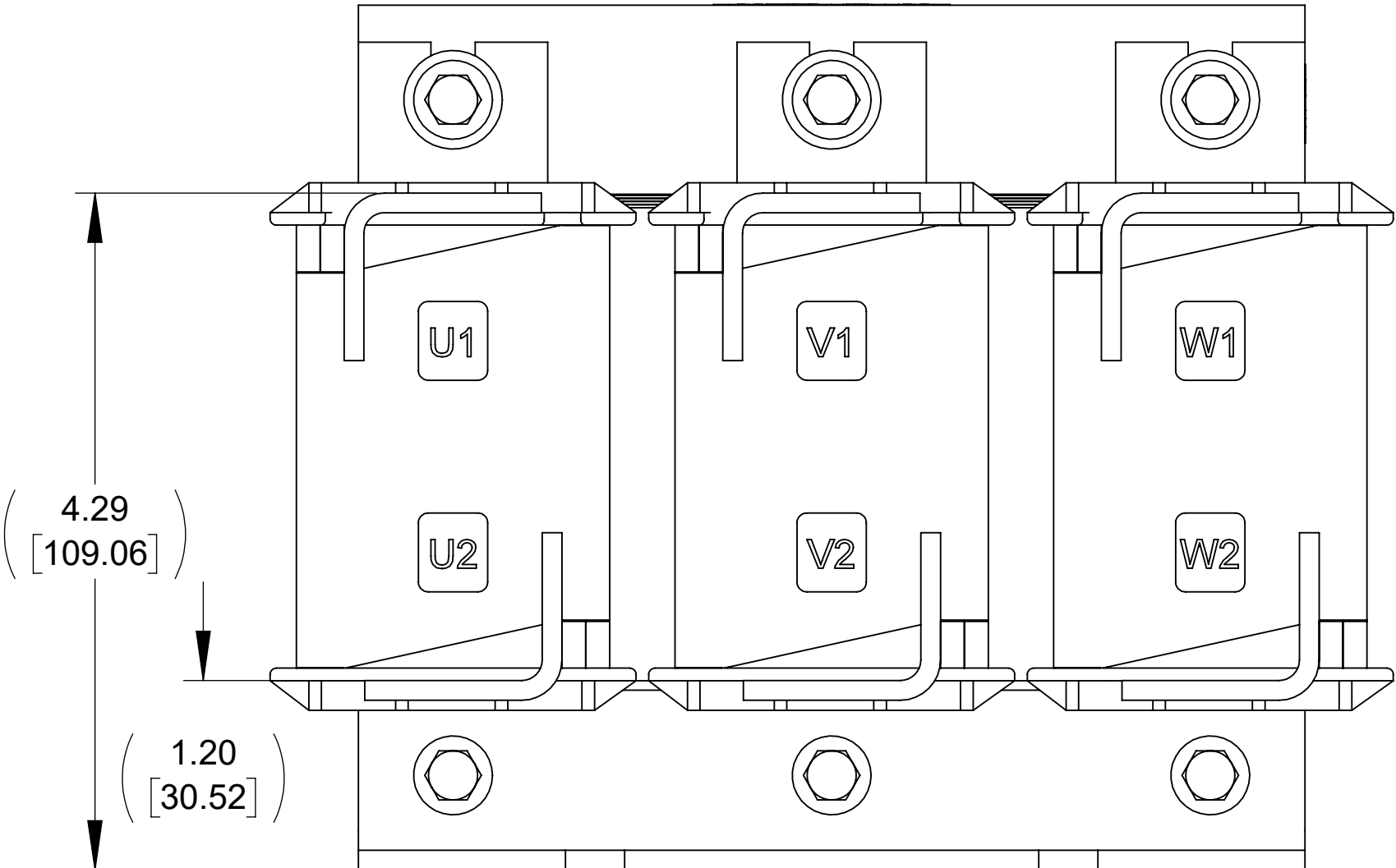
DETAIL C
(3 PLACES)



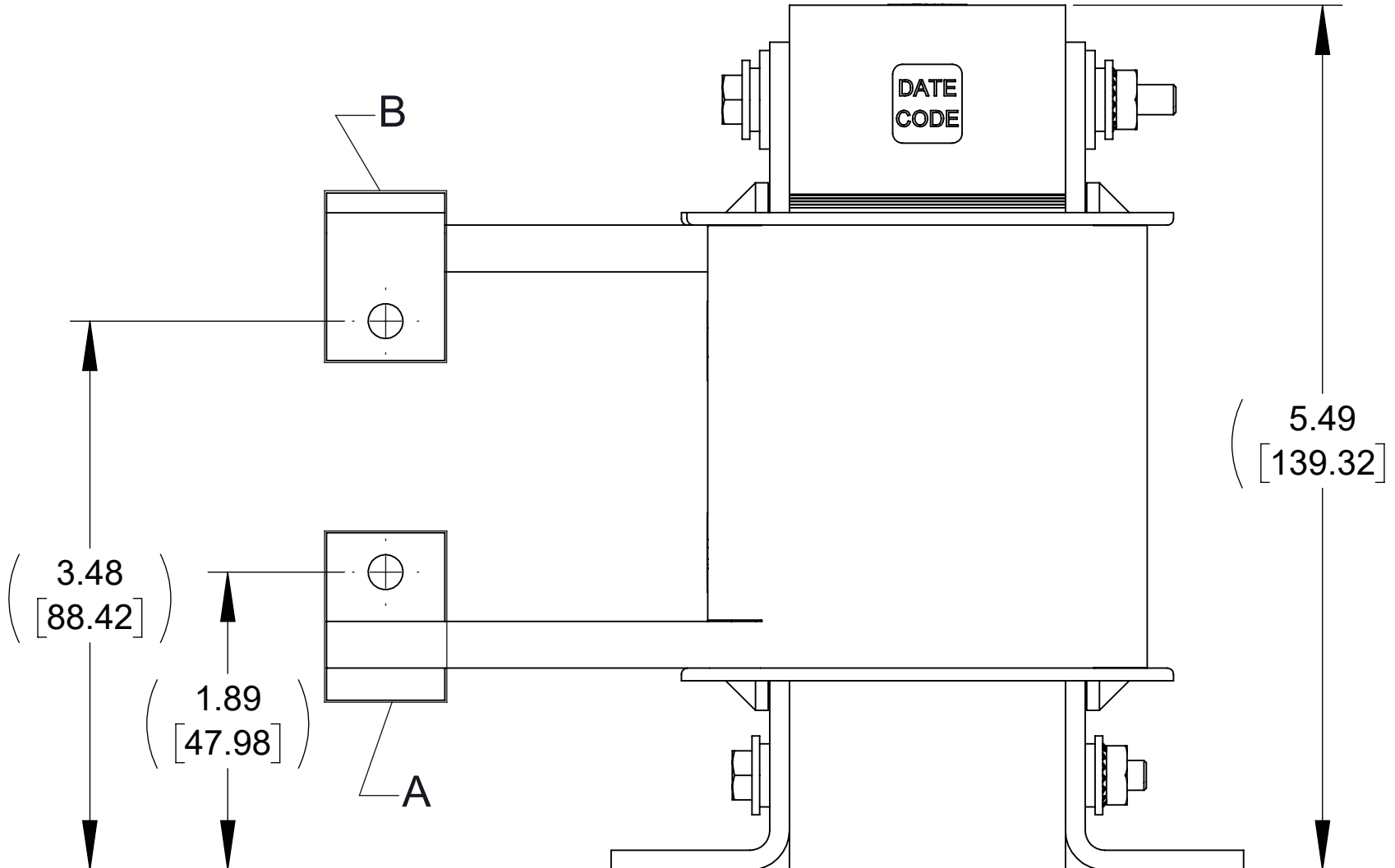
DETAIL D
(3 PLACES)



CUSTOMER CONNECTION
DETAIL VIEW



FRONT VIEW



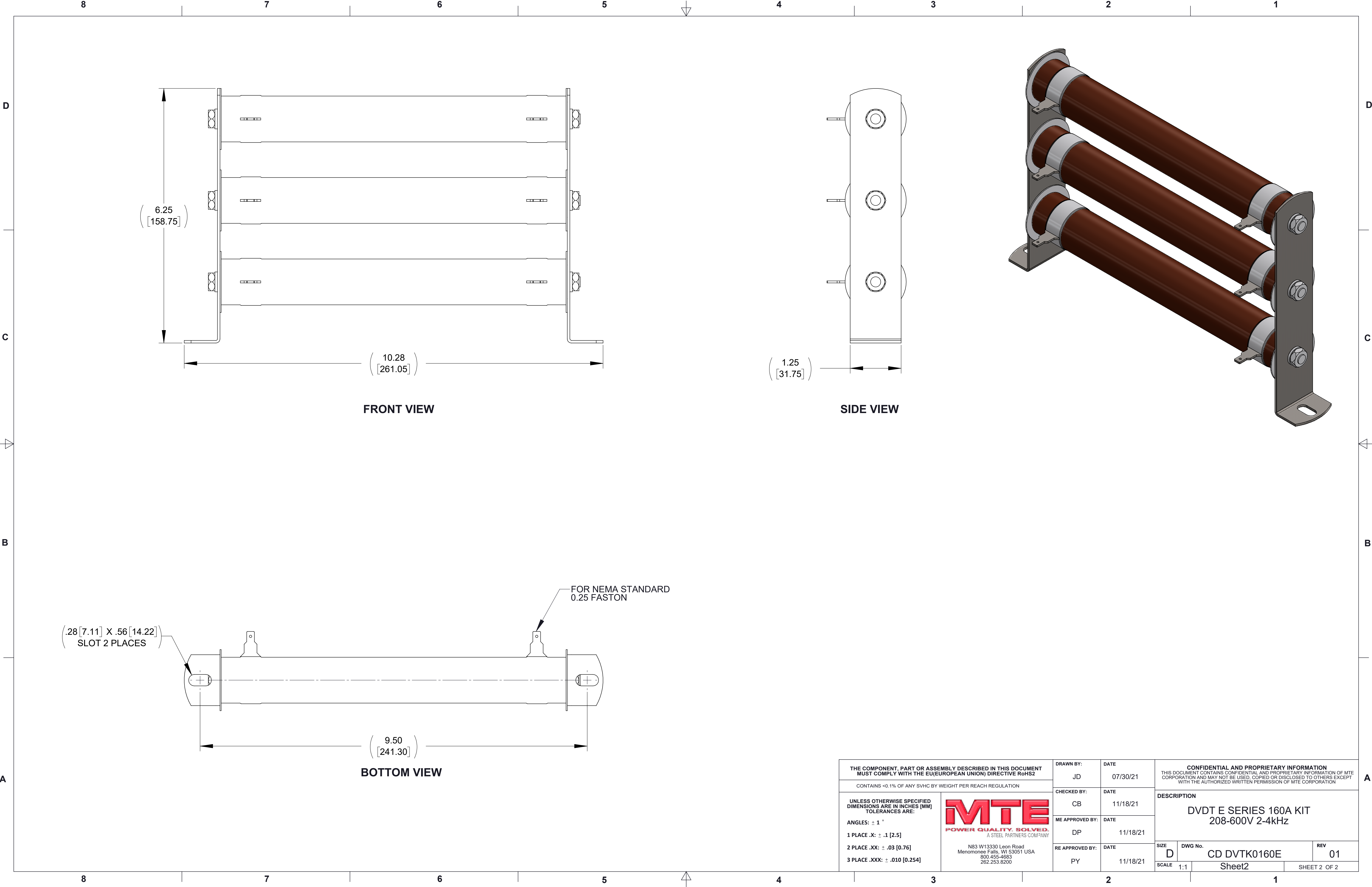
SIDE VIEW

NOTES:

1. REFER TO USER MANUAL FOR COMPLETE INSTALLATION INSTRUCTIONS.
2. FILTER INCLUDES: RESISTOR-158 (QTY. 1).

THE COMPONENT, PART OR ASSEMBLY DESCRIBED IN THIS DOCUMENT MUST COMPLY WITH THE EU(EUROPEAN UNION) DIRECTIVE RoHS2		DRAWN BY: JD	DATE 07/30/21	CONFIDENTIAL AND PROPRIETARY INFORMATION THIS DOCUMENT CONTAINS CONFIDENTIAL AND PROPRIETARY INFORMATION OF MTE CORPORATION AND MAY NOT BE USED, COPIED OR DISCLOSED TO OTHERS EXCEPT WITH THE AUTHORIZED WRITTEN PERMISSION OF MTE CORPORATION	
CONTAINS <0.1% OF ANY SVHC BY WEIGHT PER REACH REGULATION		CHECKED BY: CB	DATE 11/18/21	DESCRIPTION DVDT E SERIES 160A KIT 208-600V 2-4kHz	
UNLESS OTHERWISE SPECIFIED DIMENSIONS ARE IN INCHES [MM] TOLERANCES ARE: ANGLES: ± 1 ° 1 PLACE .X: ± .1 [2.5] 2 PLACE .XX: ± .03 [0.76] 3 PLACE .XXX: ± .010 [0.254]		ME APPROVED BY: DP	DATE 11/18/21	SIZE D	
		RE APPROVED BY: PY	DATE 11/18/21	DWG No. CD DVTK0160E	
				SCALE 1:1	REV 01
				Sheet1	
				SHEET 1 OF 2	





THE COMPONENT, PART OR ASSEMBLY DESCRIBED IN THIS DOCUMENT MUST COMPLY WITH THE EU(EUROPEAN UNION) DIRECTIVE RoHS2		DRAWN BY:	DATE	CONFIDENTIAL AND PROPRIETARY INFORMATION THIS DOCUMENT CONTAINS CONFIDENTIAL AND PROPRIETARY INFORMATION OF MTE CORPORATION AND MAY NOT BE USED, COPIED OR DISCLOSED TO OTHERS EXCEPT WITH THE AUTHORIZED WRITTEN PERMISSION OF MTE CORPORATION	
		JD	07/30/21		
CONTAINS <0.1% OF ANY SVHC BY WEIGHT PER REACH REGULATION		CHECKED BY:	DATE	DESCRIPTION	
UNLESS OTHERWISE SPECIFIED DIMENSIONS ARE IN INCHES [MM] TOLERANCES ARE: ANGLES: ± 1 ° 1 PLACE .X: ± .1 [2.5] 2 PLACE .XX: ± .03 [0.76] 3 PLACE .XXX: ± .010 [0.254]		CB	11/18/21		
		ME APPROVED BY:	DATE		
		DP	11/18/21		
		RE APPROVED BY:	DATE		
		PY	11/18/21		
<div><div>MTE</div><div>POWER QUALITY. SOLVED.</div><div>A STEEL PARTNERS COMPANY</div><div>N83 W13330 Leon Road Menomonee Falls, WI 53051 USA 800.455-4683 262.263.8200</div></div>		SIZE	DWG No.	REV	
		D	CD DVTK0160E	01	
SCALE 1:1		Sheet2		SHEET 2 OF 2	