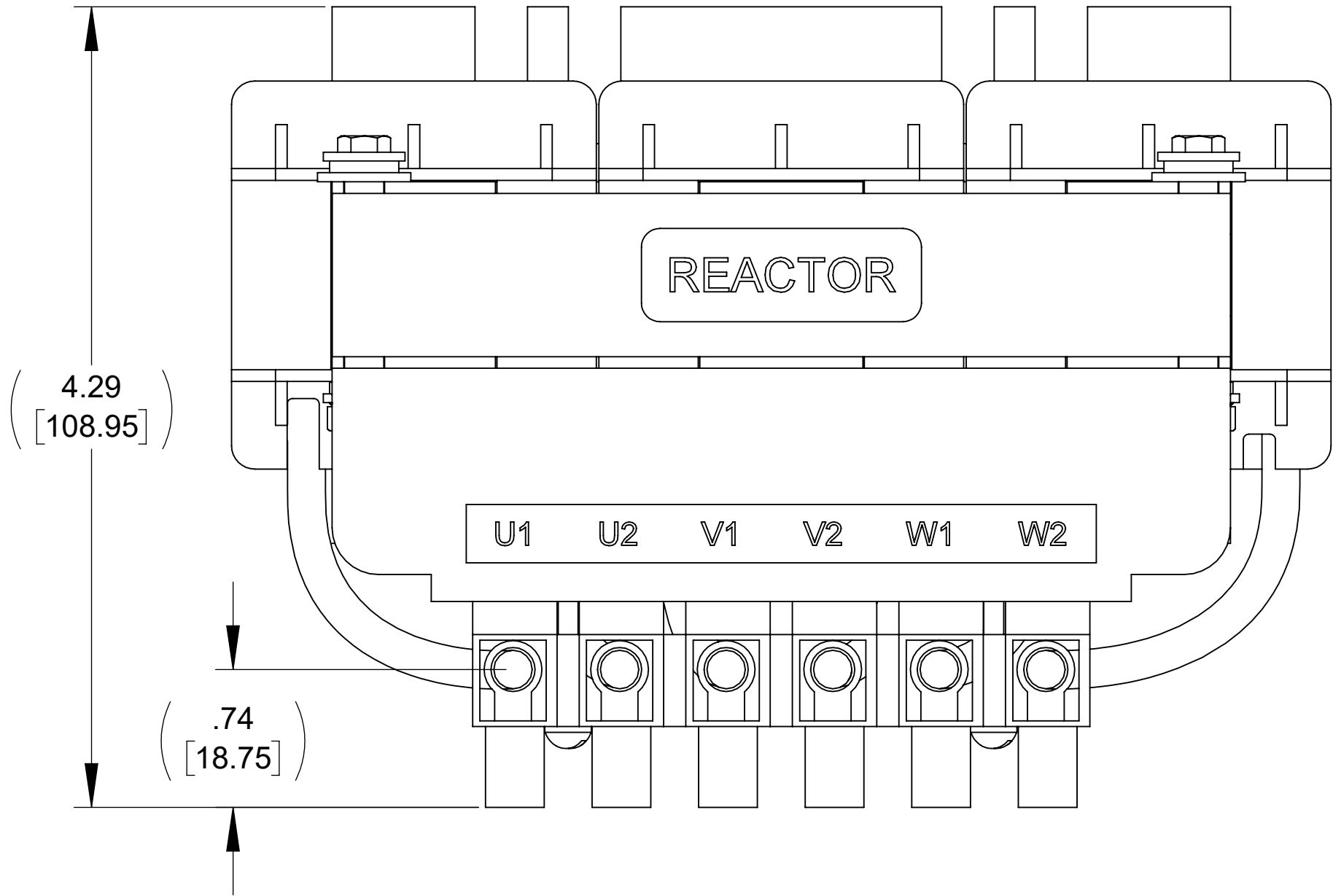
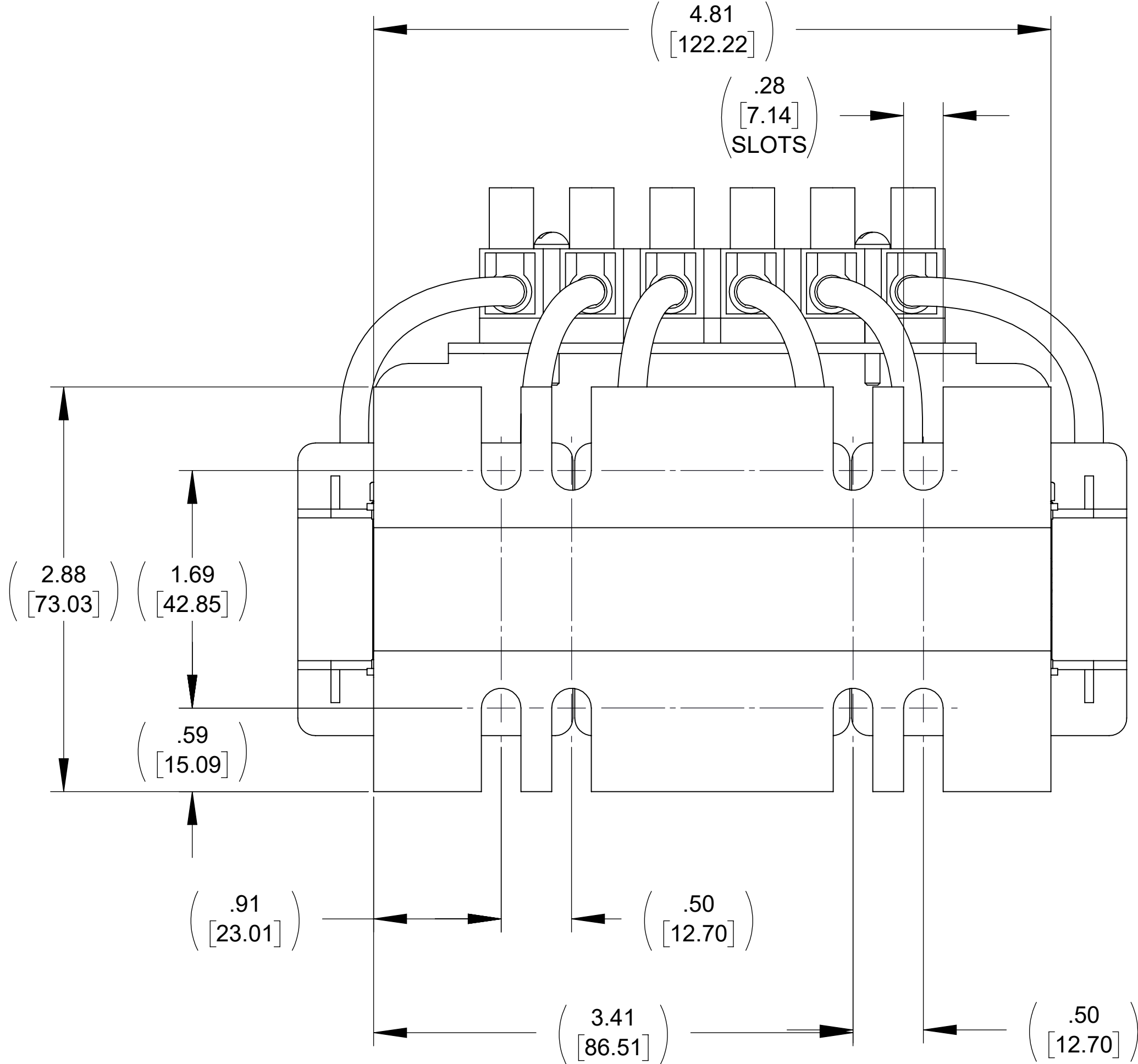


APPROX. WEIGHT
(LBS)
8

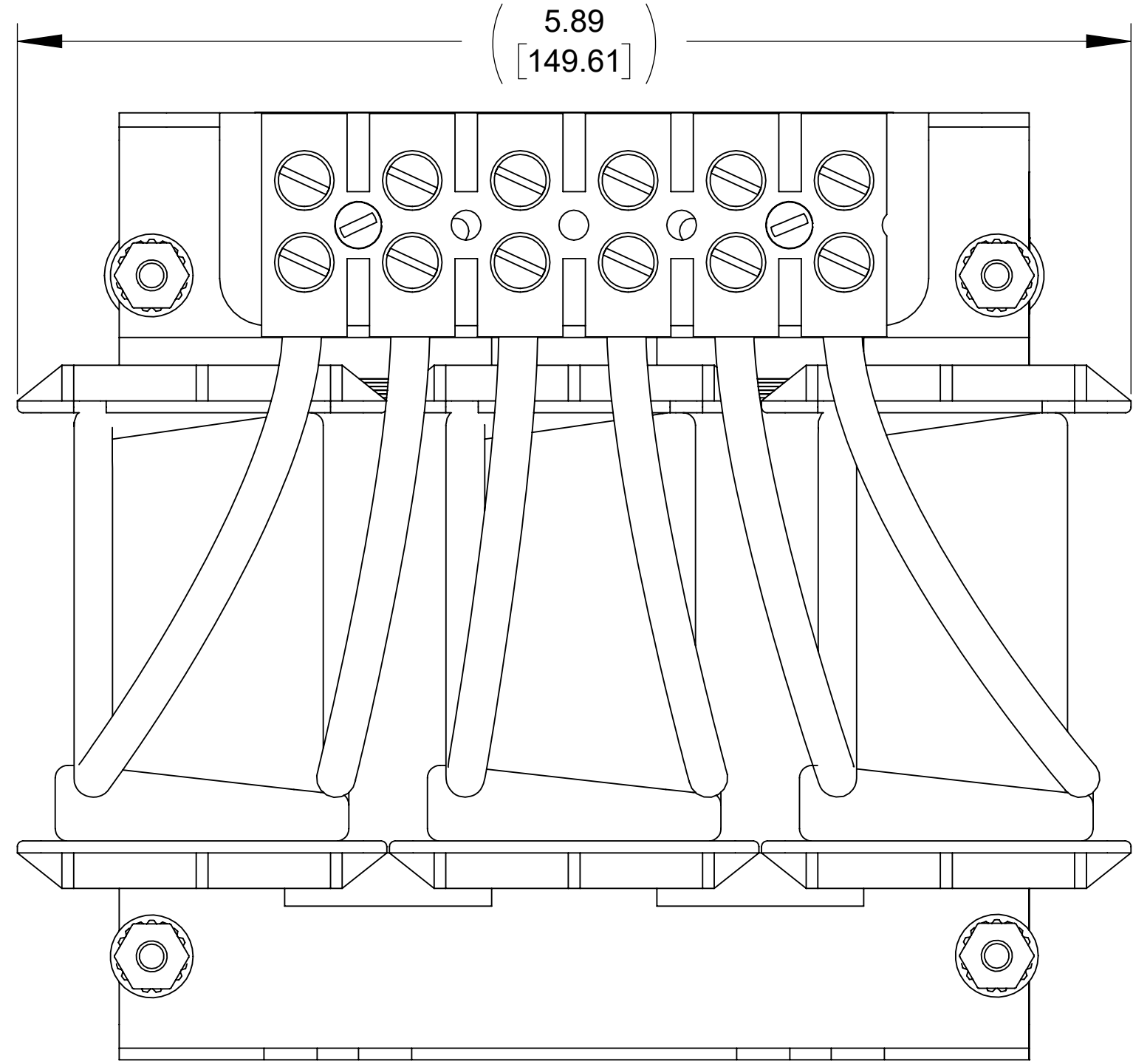
ECO No	DESCRIPTION	REV BY	DATE
M14112	ADDED RESISTOR DETAIL SHEET 2	CB	11/18/21



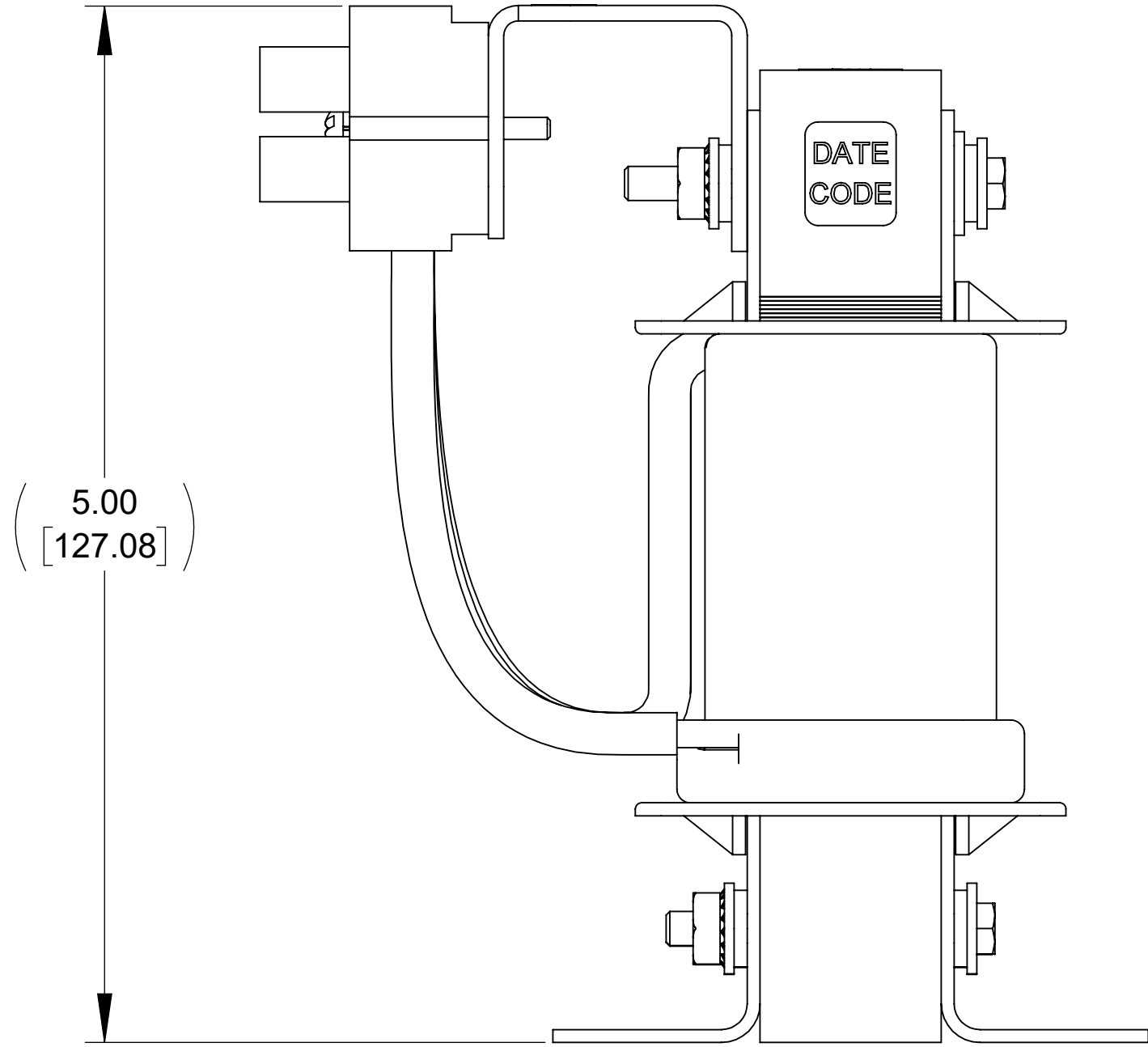
TOP VIEW



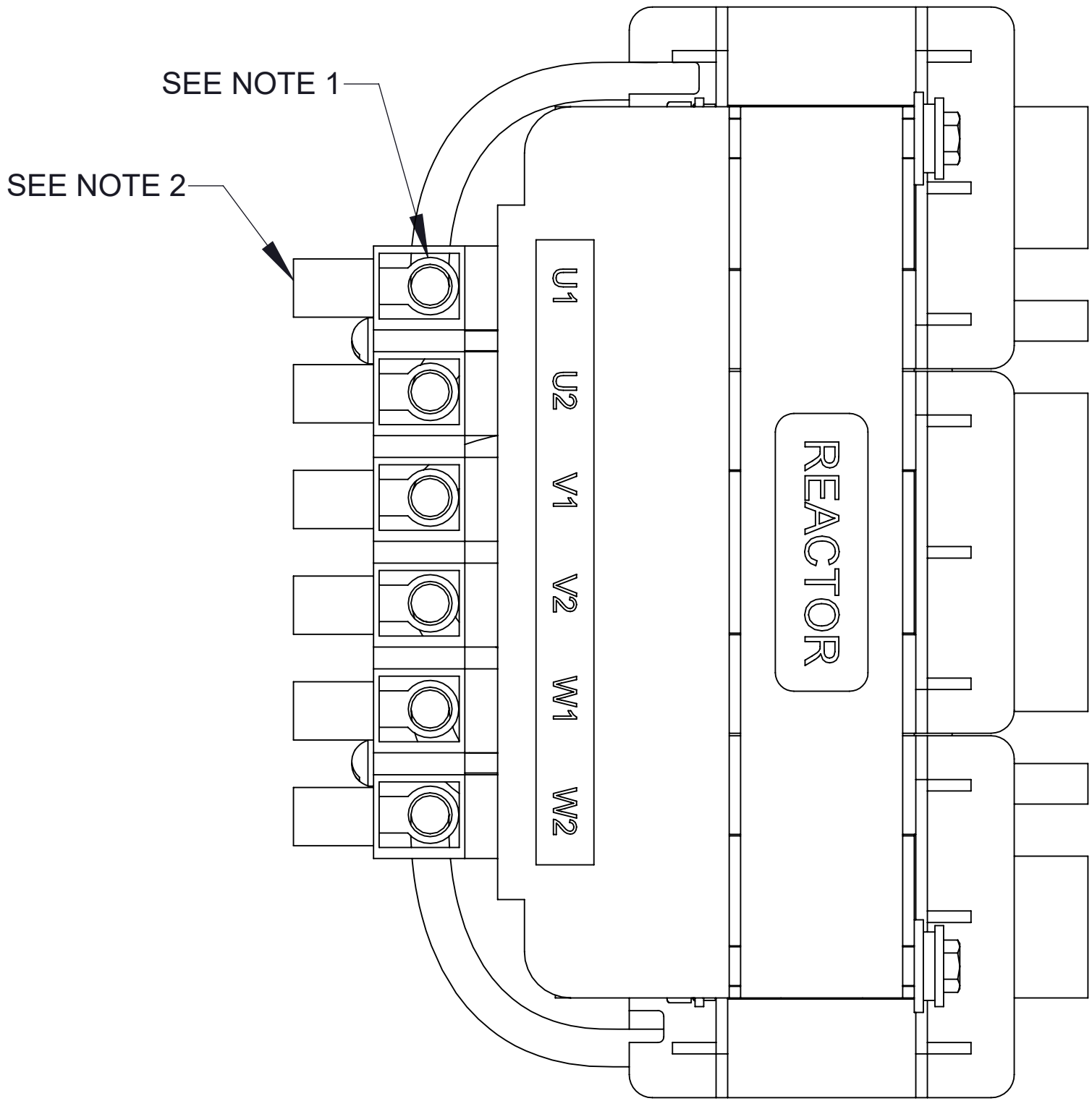
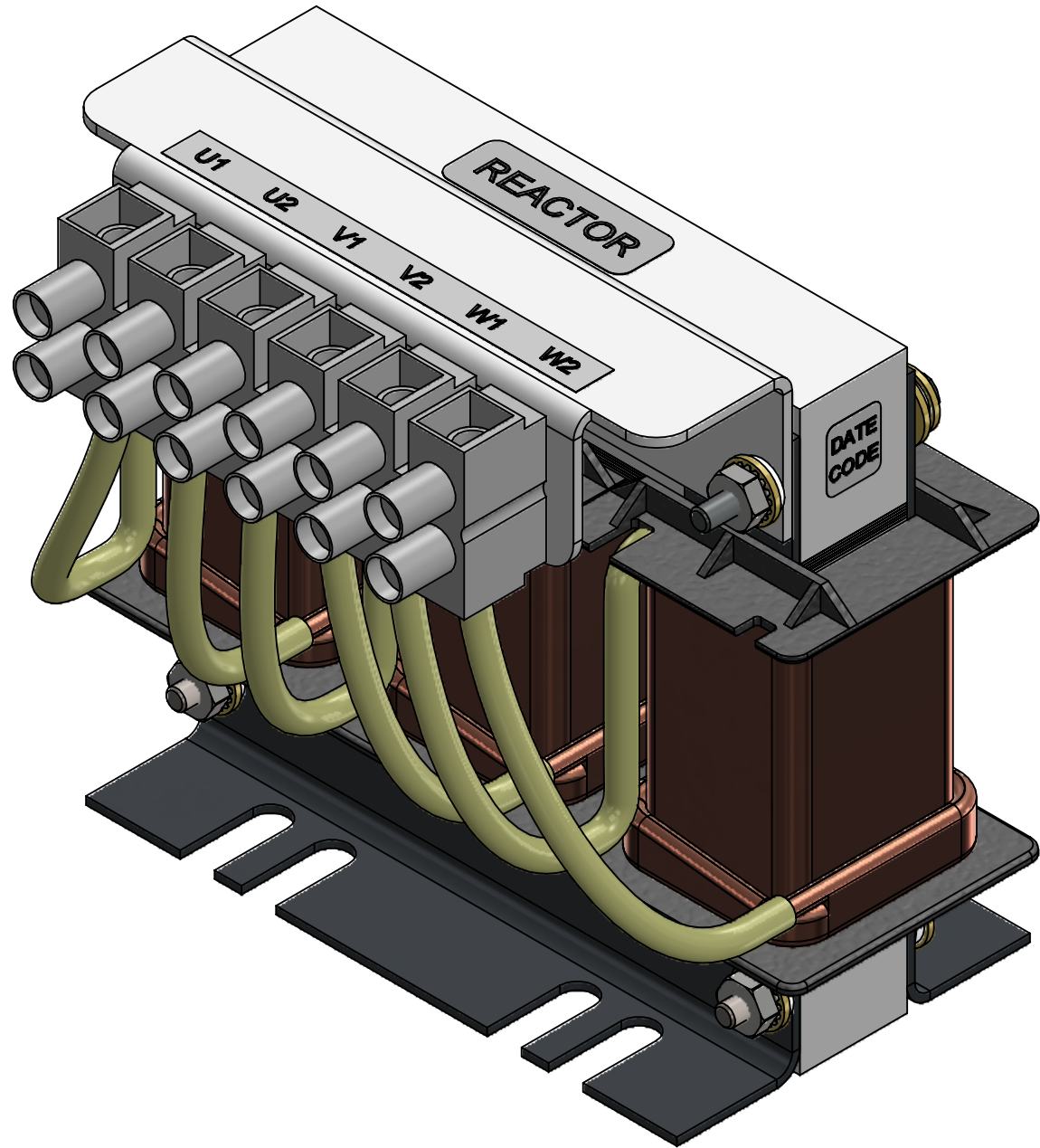
BOTTOM VIEW



FRONT VIEW



SIDE VIEW

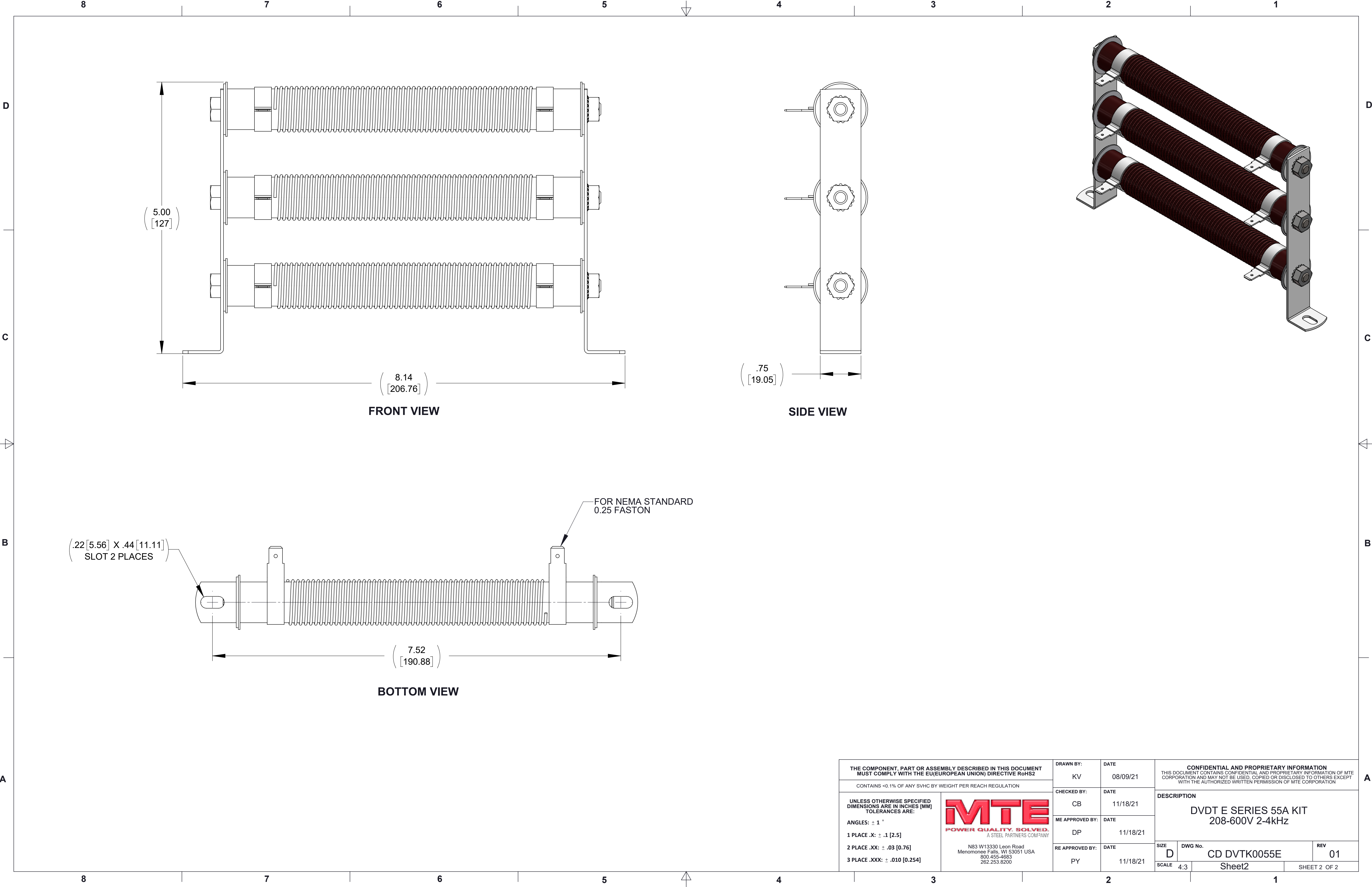


CUSTOMER CONNECTION
DETAIL VIEW

NOTES:

1. TERMINAL WIRE RANGE: 4-16 AWG.
2. TERMINAL SCREW TIGHTENING TORQUE: 16 IN•LBS.
3. REFER TO USER MANUAL FOR COMPLETE INSTALLATION INSTRUCTIONS.
4. FILTER INCLUDES: RESISTOR-191 (QTY. 1).

THE COMPONENT, PART OR ASSEMBLY DESCRIBED IN THIS DOCUMENT MUST COMPLY WITH THE EU(EUROPEAN UNION) DIRECTIVE RoHS2		DRAWN BY: KV	DATE 08/09/21	CONFIDENTIAL AND PROPRIETARY INFORMATION THIS DOCUMENT CONTAINS CONFIDENTIAL AND PROPRIETARY INFORMATION OF MTE CORPORATION AND MAY NOT BE USED, COPIED OR DISCLOSED TO OTHERS EXCEPT WITH THE AUTHORIZED WRITTEN PERMISSION OF MTE CORPORATION	
CONTAINS <0.1% OF ANY SVHC BY WEIGHT PER REACH REGULATION		CHECKED BY: CB	DATE 11/18/21		
UNLESS OTHERWISE SPECIFIED DIMENSIONS ARE IN INCHES [MM] TOLERANCES ARE: ANGLES: ± 1 ° 1 PLACE .X: ± .1 [2.5] 2 PLACE .XX: ± .03 [0.76] 3 PLACE .XXX: ± .010 [0.254]		ME APPROVED BY: DP	DATE 11/18/21	DESCRIPTION DVDT E SERIES 55A KIT 208-600V 2-4kHz	
 N83 W13330 Leon Road Menomonee Falls, WI 53051 USA 800.455.4683 262.253.8200		RE APPROVED BY: PY	DATE 11/18/21	SIZE D	DWG No. CD DVTK0055E
				SCALE 4:3	REV 01
		Sheet1		SHEET 1 OF 2	



THE COMPONENT, PART OR ASSEMBLY DESCRIBED IN THIS DOCUMENT MUST COMPLY WITH THE EU(EUROPEAN UNION) DIRECTIVE RoHS2		DRAWN BY:	DATE	CONFIDENTIAL AND PROPRIETARY INFORMATION THIS DOCUMENT CONTAINS CONFIDENTIAL AND PROPRIETARY INFORMATION OF MTE CORPORATION AND MAY NOT BE USED, COPIED OR DISCLOSED TO OTHERS EXCEPT WITH THE AUTHORIZED WRITTEN PERMISSION OF MTE CORPORATION	
		KV	08/09/21		
CONTAINS <0.1% OF ANY SVHC BY WEIGHT PER REACH REGULATION		CHECKED BY:	DATE	DESCRIPTION DVDT E SERIES 55A KIT 208-600V 2-4kHz	
UNLESS OTHERWISE SPECIFIED DIMENSIONS ARE IN INCHES [MM] TOLERANCES ARE: ANGLES: ± 1 ° 1 PLACE .X: ± .1 [2.5] 2 PLACE .XX: ± .03 [0.76] 3 PLACE .XXX: ± .010 [0.254]		CB	11/18/21		
		ME APPROVED BY:	DATE		
		DP	11/18/21		
		RE APPROVED BY:	DATE		
		PY	11/18/21		
<div><div>MTE</div><div>POWER QUALITY. SOLVED.</div><div>A STEEL PARTNERS COMPANY</div><div>N83 W13330 Leon Road Menomonee Falls, WI 53051 USA 800.455-4683 262.263.8200</div></div>		SIZE	DWG No.	REV	
		D	CD DVTK0055E	01	
SCALE 4:3		Sheet2		SHEET 2 OF 2	