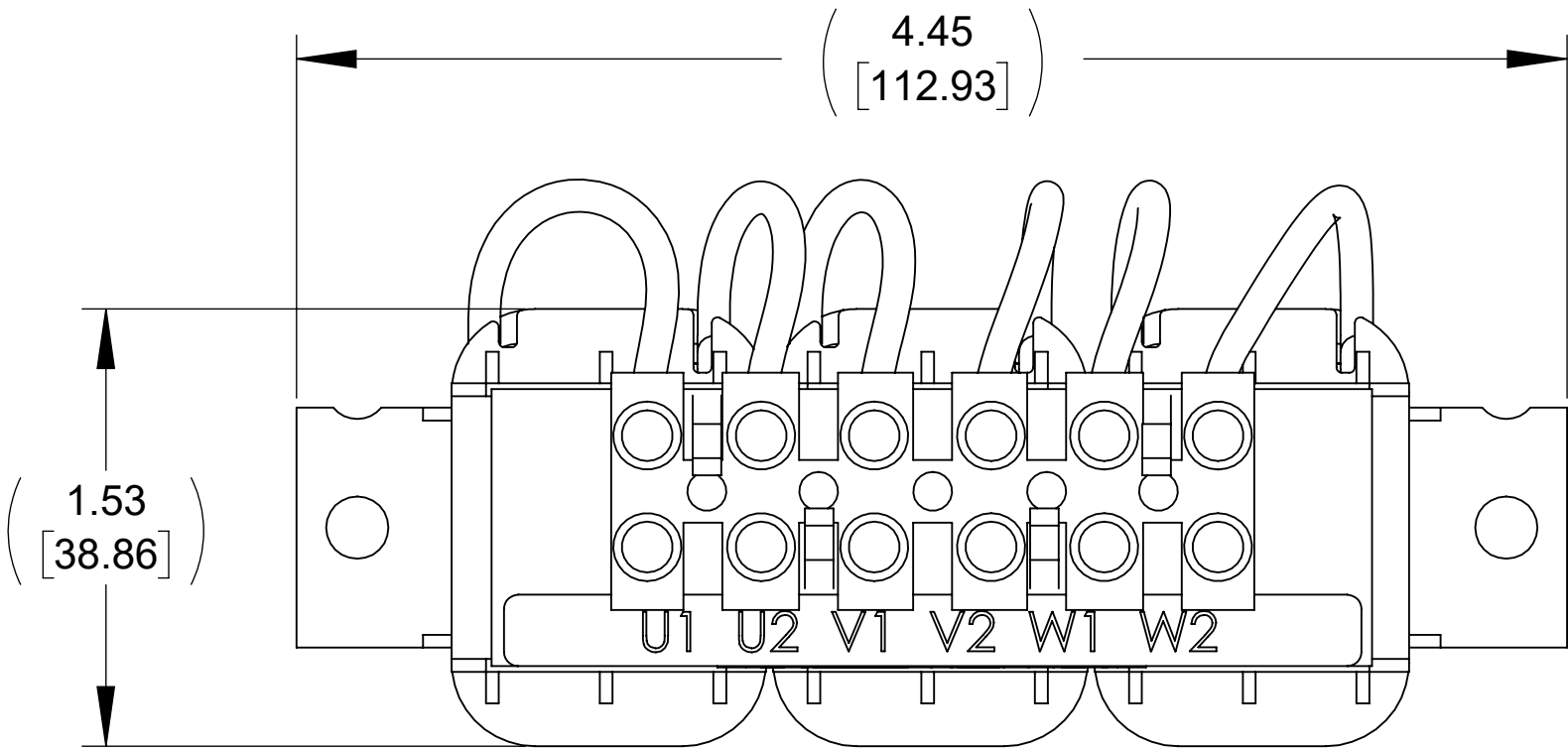
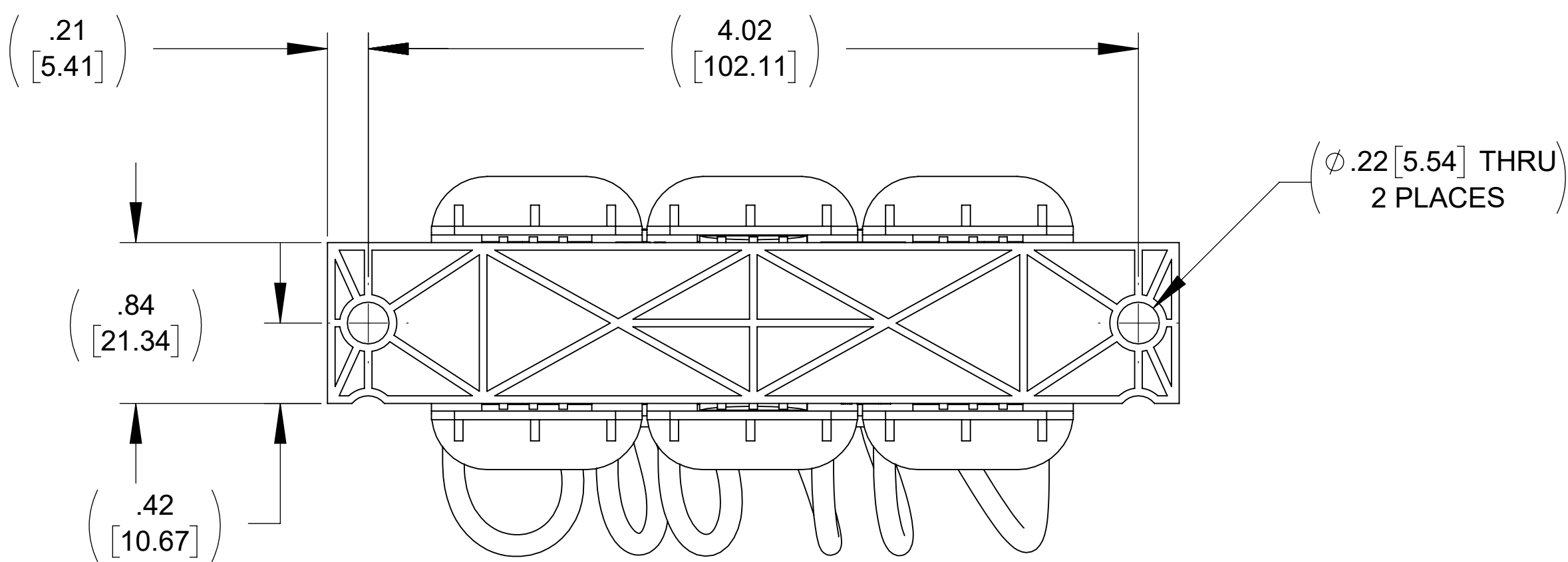


APPROX. WEIGHT
(LBS)
3

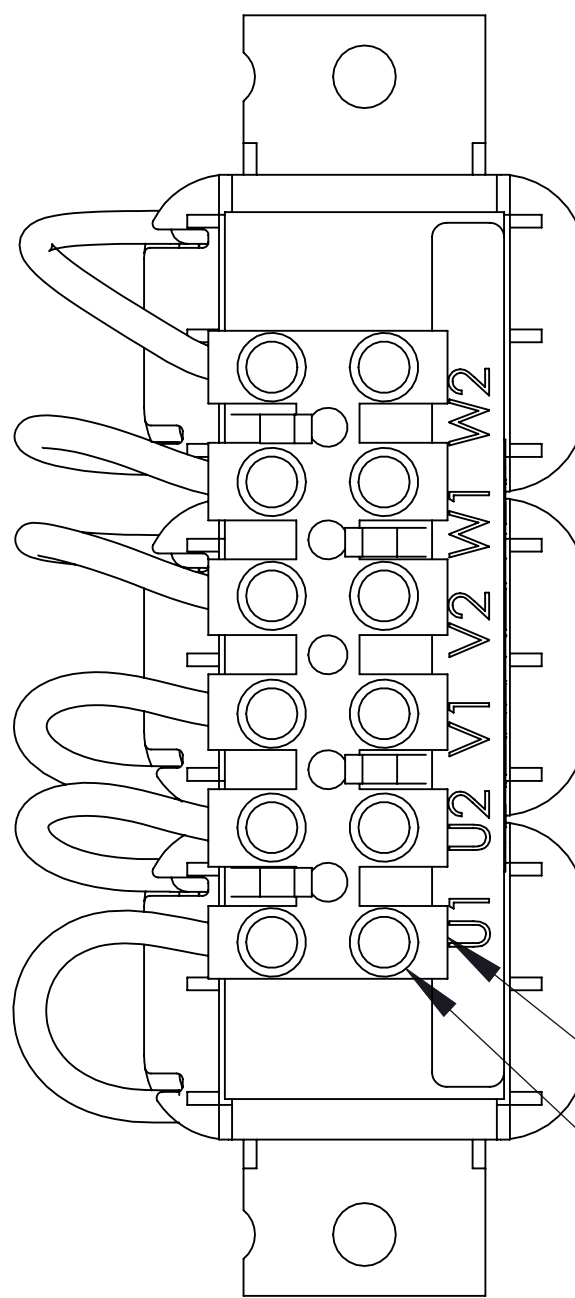
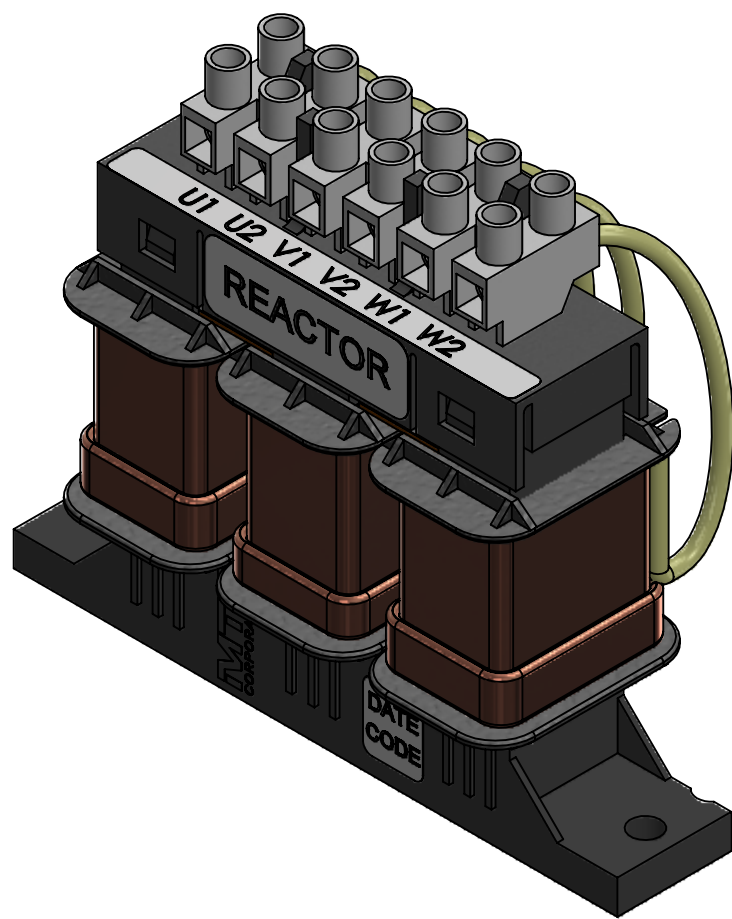
ECO No	DESCRIPTION	REV BY	DATE
M14110	ADDED RESISTOR DETAIL SHEET 2	CB	11/18/21



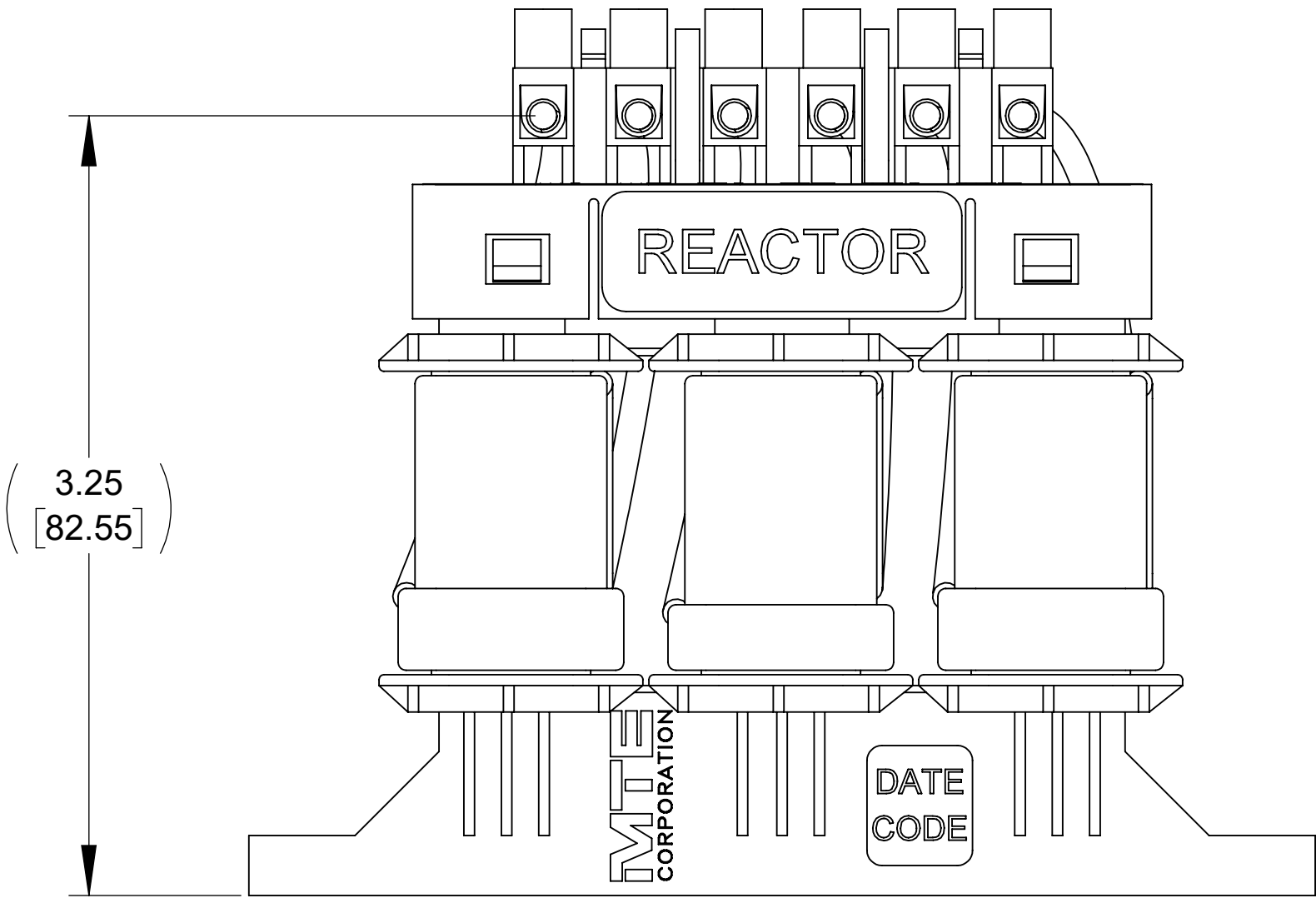
TOP VIEW



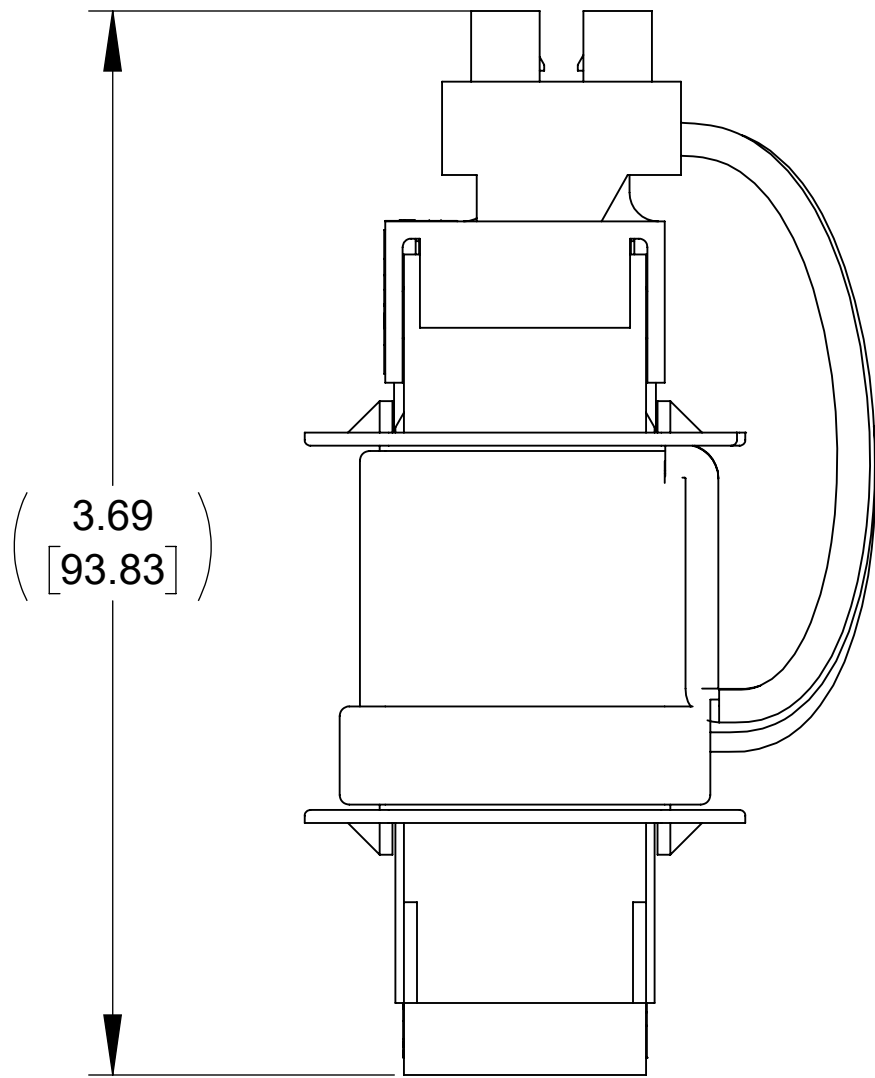
BOTTOM VIEW



CUSTOMER CONNECTION
DETAIL VIEW



FRONT VIEW



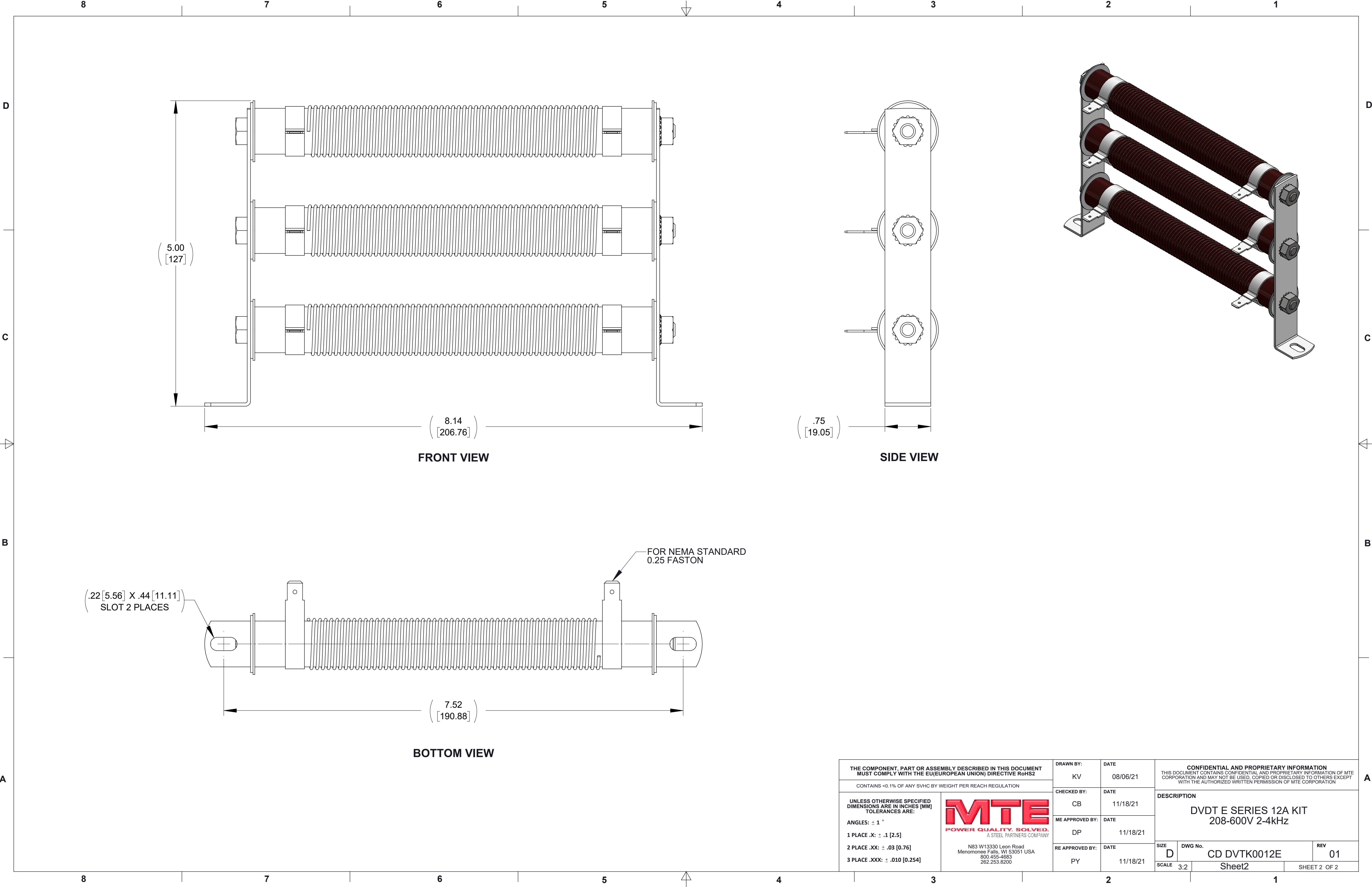
SIDE VIEW

NOTES:

1. TERMINAL WIRE RANGE: 10-22 AWG.
2. TERMINAL SCREW TIGHTENING TORQUE: 4.0 INLBS.
3. REFER TO USER MANUAL FOR COMPLETE INSTALLATION INSTRUCTIONS.
4. FILTER INCLUDES: RESISTOR-191 (QTY. 1).

THE COMPONENT, PART OR ASSEMBLY DESCRIBED IN THIS DOCUMENT MUST COMPLY WITH THE EU(EUROPEAN UNION) DIRECTIVE RoHS2		DRAWN BY: KV	DATE 08/06/21	CONFIDENTIAL AND PROPRIETARY INFORMATION THIS DOCUMENT CONTAINS CONFIDENTIAL AND PROPRIETARY INFORMATION OF MTE CORPORATION AND MAY NOT BE USED, COPIED OR DISCLOSED TO OTHERS EXCEPT WITH THE AUTHORIZED WRITTEN PERMISSION OF MTE CORPORATION	
CONTAINS <0.1% OF ANY SVHC BY WEIGHT PER REACH REGULATION		CHECKED BY: CB	DATE 11/18/21		
UNLESS OTHERWISE SPECIFIED DIMENSIONS ARE IN INCHES [MM] TOLERANCES ARE: ANGLES: ± 1 ° 1 PLACE .X: ± .1 [2.5] 2 PLACE .XX: ± .03 [0.76] 3 PLACE .XXX: ± .010 [0.254]		ME APPROVED BY: DP	DATE 11/18/21	DESCRIPTION DVDT E SERIES 12A KIT 208-600V 2-4kHz	
		RE APPROVED BY: PY	DATE 11/18/21		
				SIZE D	DWG No. CD DVTK0012E
				SCALE 3:2	REV 01
				Sheet1	
				SHEET 1 OF 2	





THE COMPONENT, PART OR ASSEMBLY DESCRIBED IN THIS DOCUMENT MUST COMPLY WITH THE EU(EUROPEAN UNION) DIRECTIVE RoHS2		DRAWN BY: KV	DATE 08/06/21	CONFIDENTIAL AND PROPRIETARY INFORMATION THIS DOCUMENT CONTAINS CONFIDENTIAL AND PROPRIETARY INFORMATION OF MTE CORPORATION AND MAY NOT BE USED, COPIED OR DISCLOSED TO OTHERS EXCEPT WITH THE AUTHORIZED WRITTEN PERMISSION OF MTE CORPORATION		
		CHECKED BY: CB	DATE 11/18/21			
CONTAINS <0.1% OF ANY SVHC BY WEIGHT PER REACH REGULATION		ME APPROVED BY: DP	DATE 11/18/21	DESCRIPTION DVDT E SERIES 12A KIT 208-600V 2-4kHz		
		RE APPROVED BY: PY	DATE 11/18/21			
UNLESS OTHERWISE SPECIFIED DIMENSIONS ARE IN INCHES [MM] TOLERANCES ARE: ANGLES: ± 1 ° 1 PLACE .X: ± .1 [2.5] 2 PLACE .XX: ± .03 [0.76] 3 PLACE .XXX: ± .010 [0.254]		 N83 W13330 Leon Road Menomonee Falls, WI 53051 USA 800.455-4683 262.263.8200		SIZE D	DWG No. CD DVTK0012E	REV 01
				SCALE 3:2	Sheet2	SHEET 2 OF 2