

APPROX WEIGHT (LBS)
212

ECO No	DESCRIPTION	REV BY	DATE
M9495	DIM 3.14 WAS 3.67	RAH	03/17/15

D

C

B

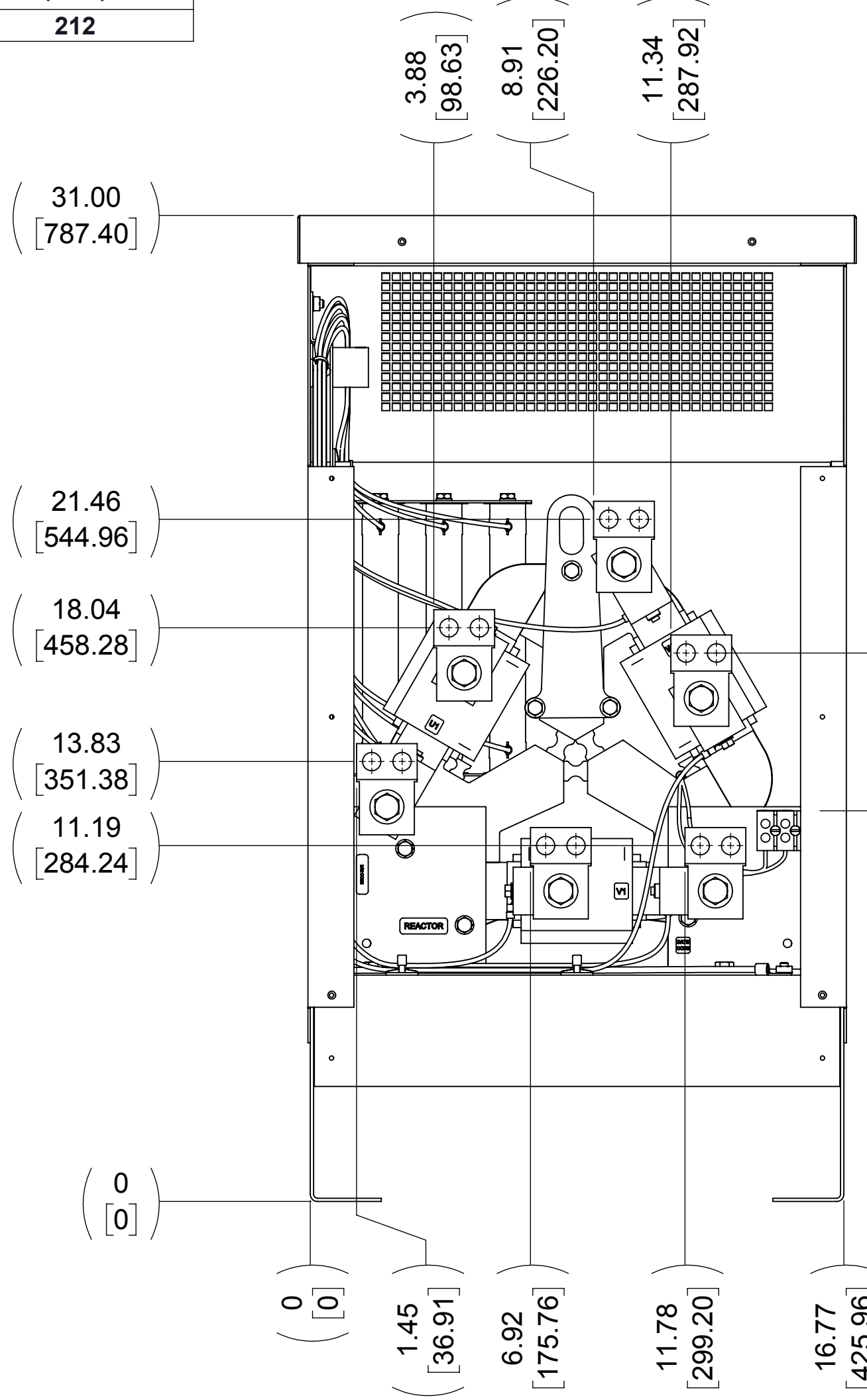
A

D

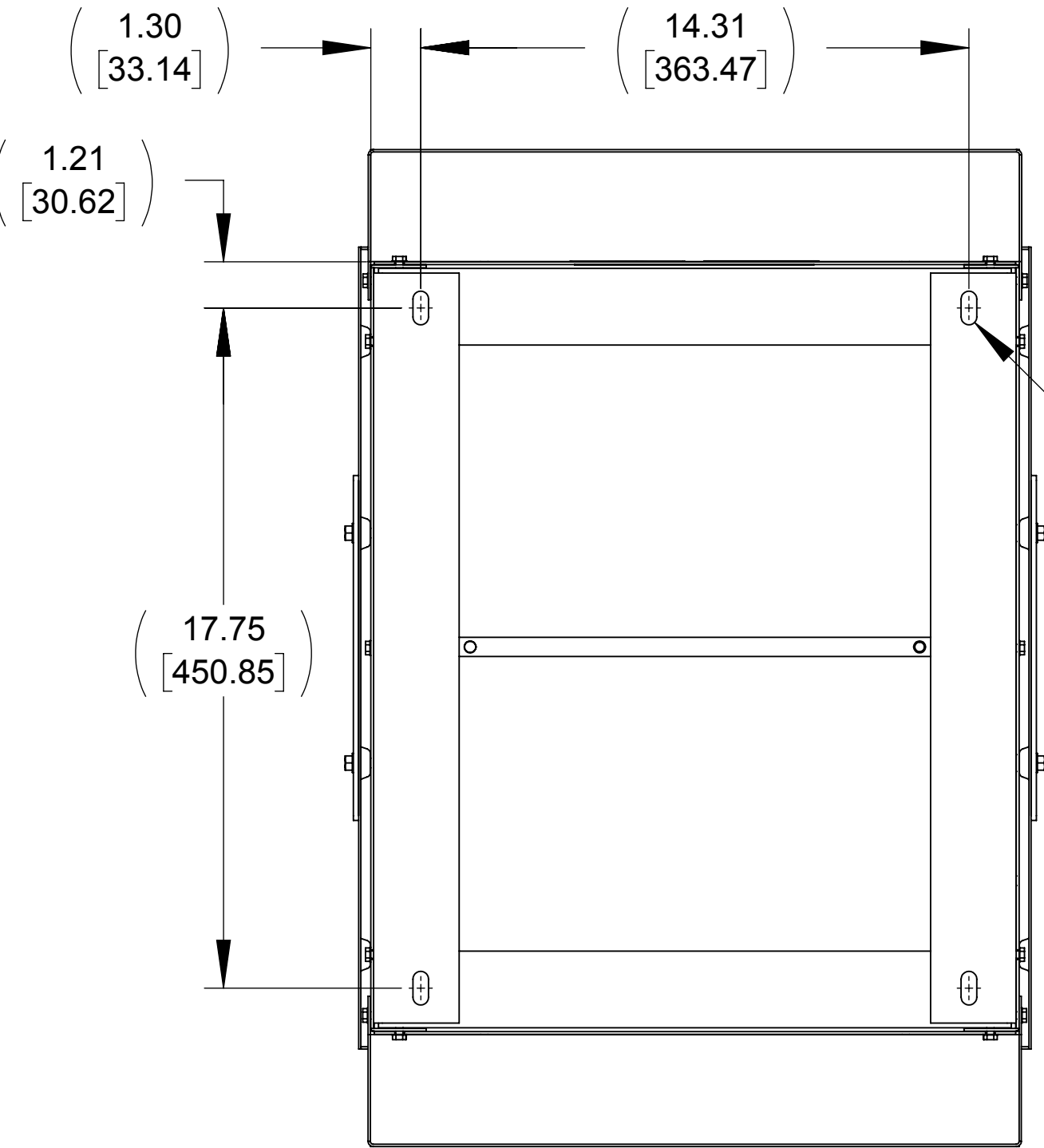
C

B

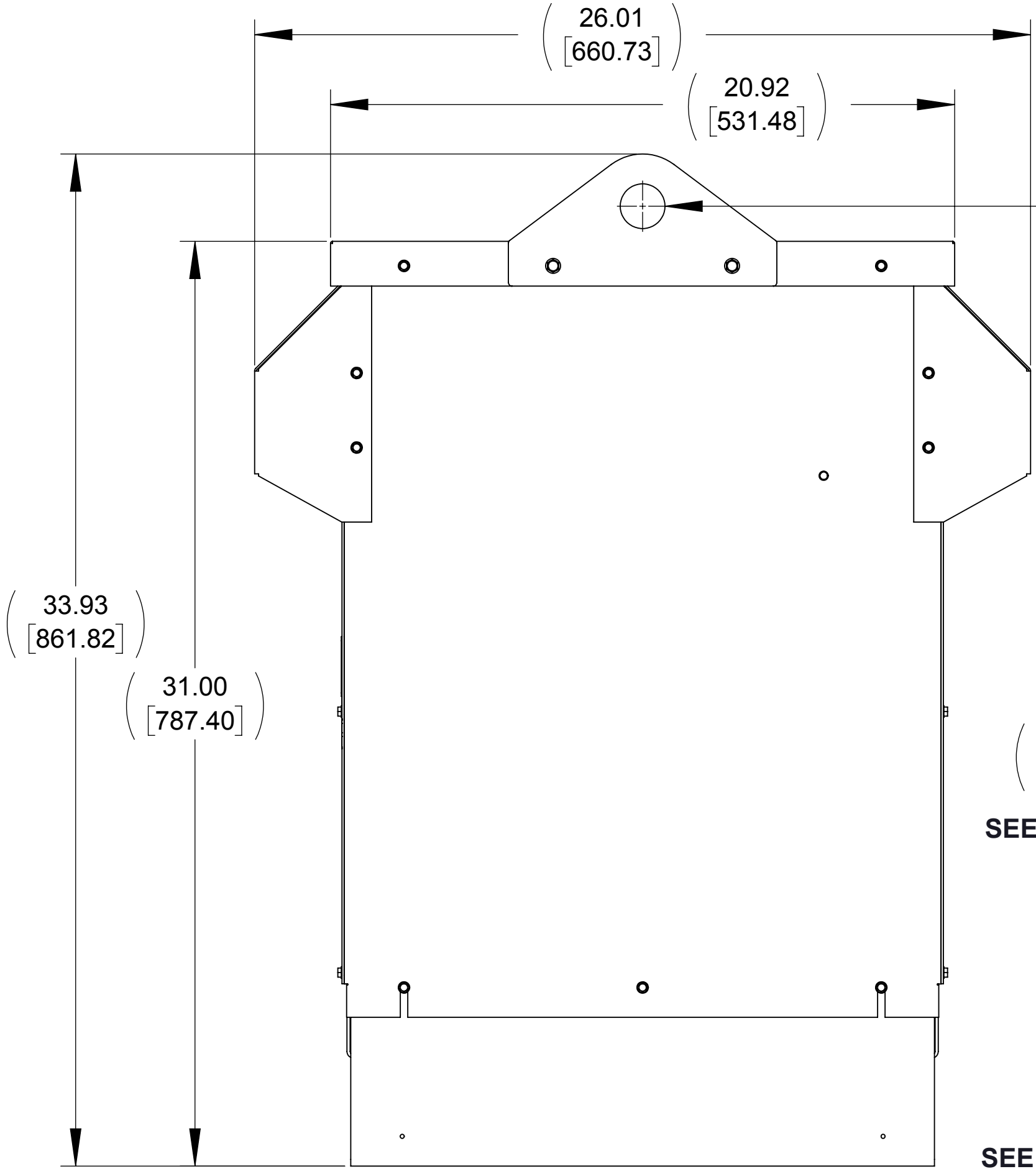
A



FRONT VIEW  
(PANEL REMOVED)

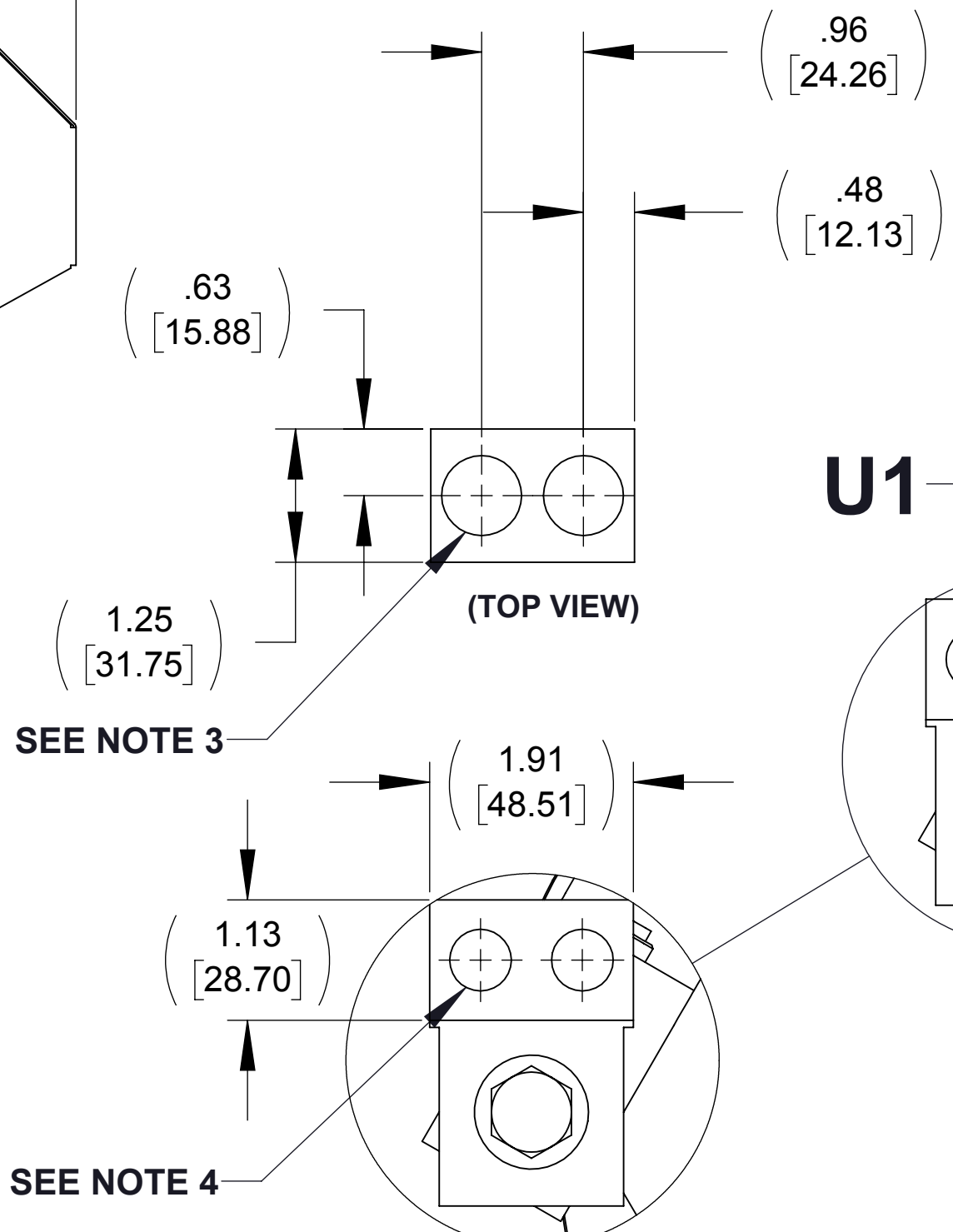


BOTTOM VIEW

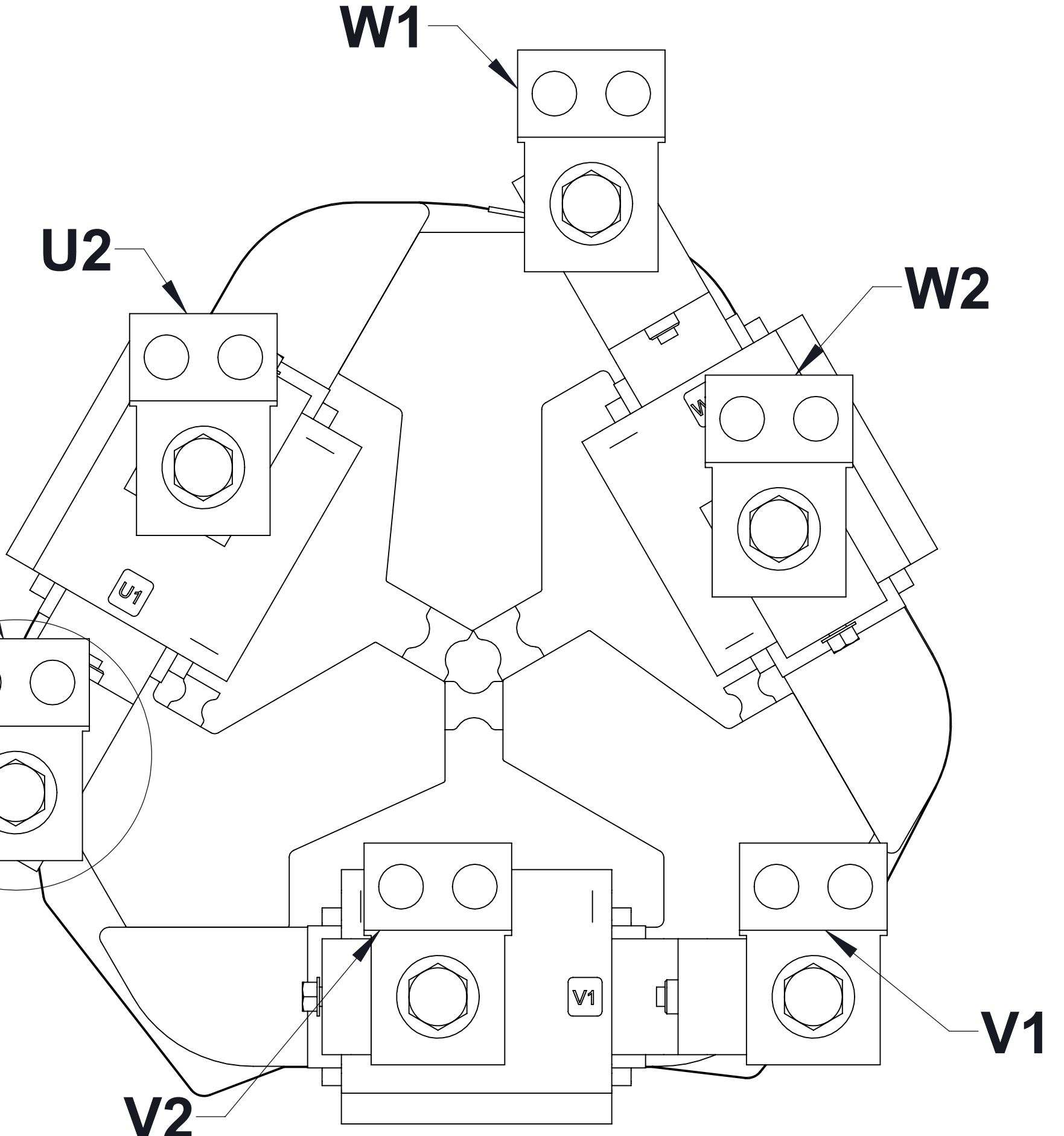


SIDE VIEW

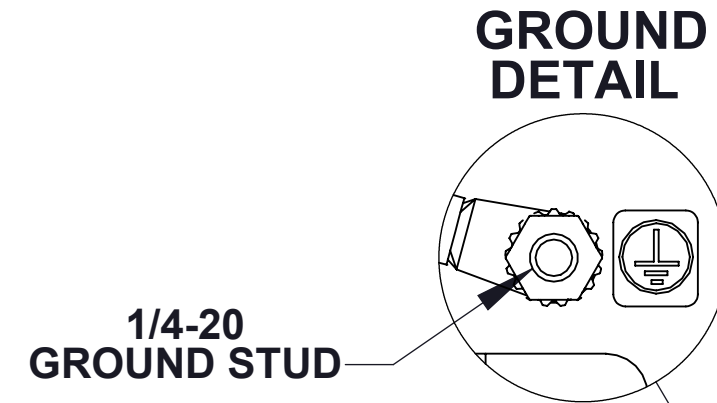
(2X Ø 1.50 [38.10])  
THRU



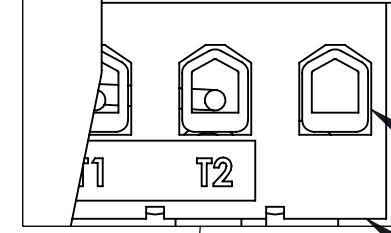
(FRONT VIEW)  
FIELD TERMINAL  
DETAIL  
(6 PLACES)  
(U1, U2, V1, V2, W1, W2)



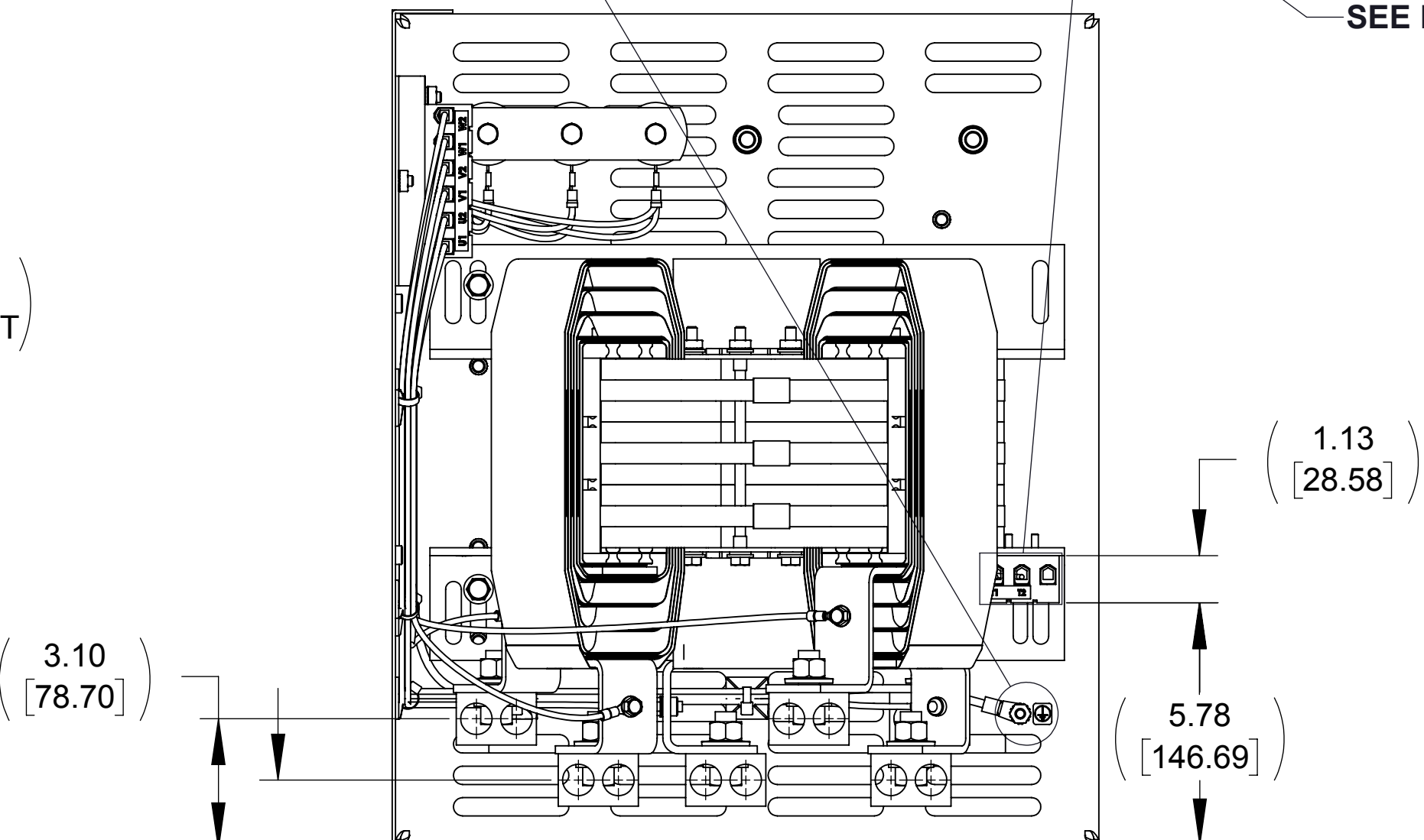
CUSTOMER CONNECTION  
DETAIL VIEW



CUSTOMER THERMAL  
CONNECTION




SEE NOTE 1  
SEE NOTE 2



TOP VIEW  
(PANELS REMOVED)

NOTES:

1. WIRE RANGE: 4 - 18 AWG
2. TERMINAL SCREW TIGHTENING TORQUE: 16 IN/LBS, MAX.
3. WIRE RANGE: 350 kcmil - 6 AWG
4. TERMINAL SCREW TIGHTENING TORQUE: 500 IN/LBS, MAX.

THE COMPONENT, PART OR ASSEMBLY DESCRIBED IN THIS DOCUMENT MUST COMPLY WITH THE EU(EUROPEAN UNION) DIRECTIVE RoHS2		MATERIAL		CONFIDENTIAL AND PROPRIETARY INFORMATION THIS DOCUMENT CONTAINS CONFIDENTIAL AND PROPRIETARY INFORMATION OF MTE CORPORATION AND MAY NOT BE USED, COPIED OR DISCLOSED TO OTHERS EXCEPT WITH THE AUTHORIZED WRITTEN PERMISSION OF MTE CORPORATION			
CONTAINS <0.1% OF ANY SVHC BY WEIGHT PER REACH REGULATION				DESCRIPTION			
<div>UNLESS OTHERWISE SPECIFIED DIMENSIONS ARE IN INCHES [MM] TOLERANCES ARE:  ANGLES: ± 1 °  1 PLACE .X: ± .1 [2.5]  2 PLACE .XX: ± .03 [0.76]  3 PLACE .XXX: ± .010 [0.254]</div>		<div>  N83 W13330 Leon Road Menomonee Falls, WI 53051 USA 800.455-4683 262.253-8200</div>		DV SENTRY 415A 380-600V FILTER, NEMA 3R ENCL.			
		DRAWN	DATE	SIZE	DWG No.	REV	
		MM	07/31/14				
		CHECKED	DATE	SCALE	1:4		
		RH	03/18/15				
		APPROVED	DATE				
		RH	03/18/15	CD DVSW0415E			
				SHEET 1 OF 1			