

APPROX WEIGHT (LBS)
181

ECO No	DESCRIPTION	REV BY	DATE
M9495	DIM 4.22 WAS 4.71	RAH	03/17/15

D

C

B

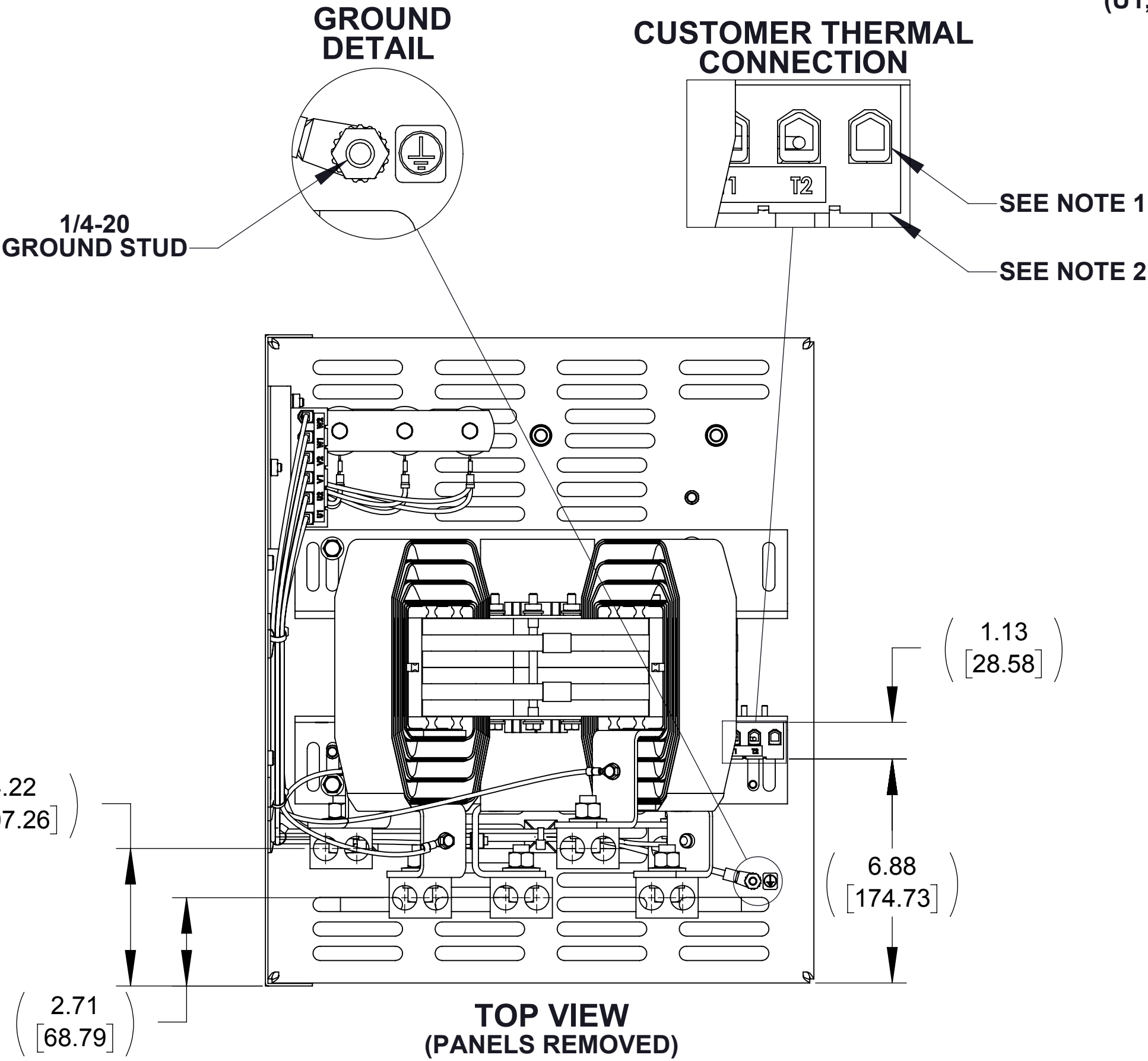
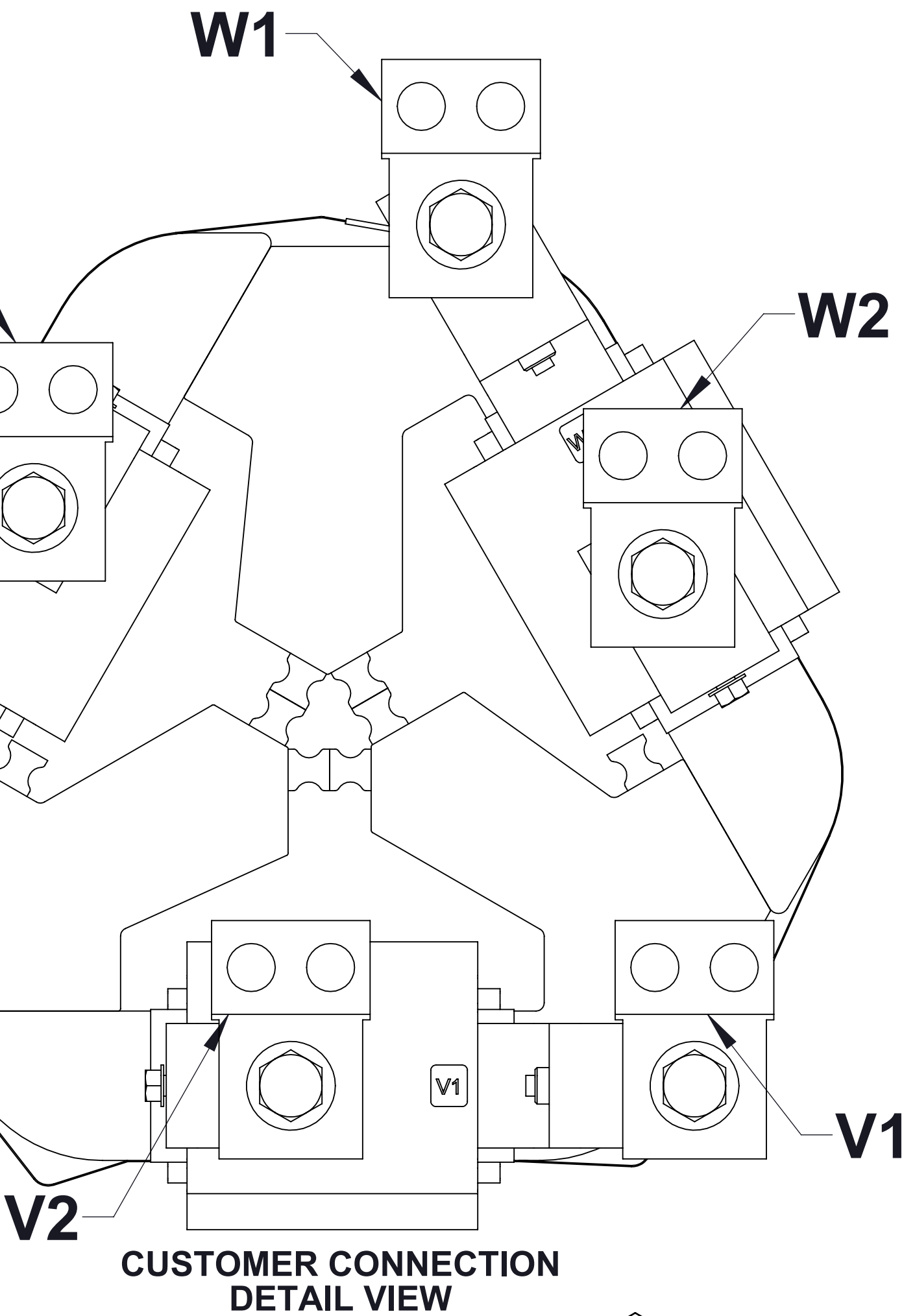
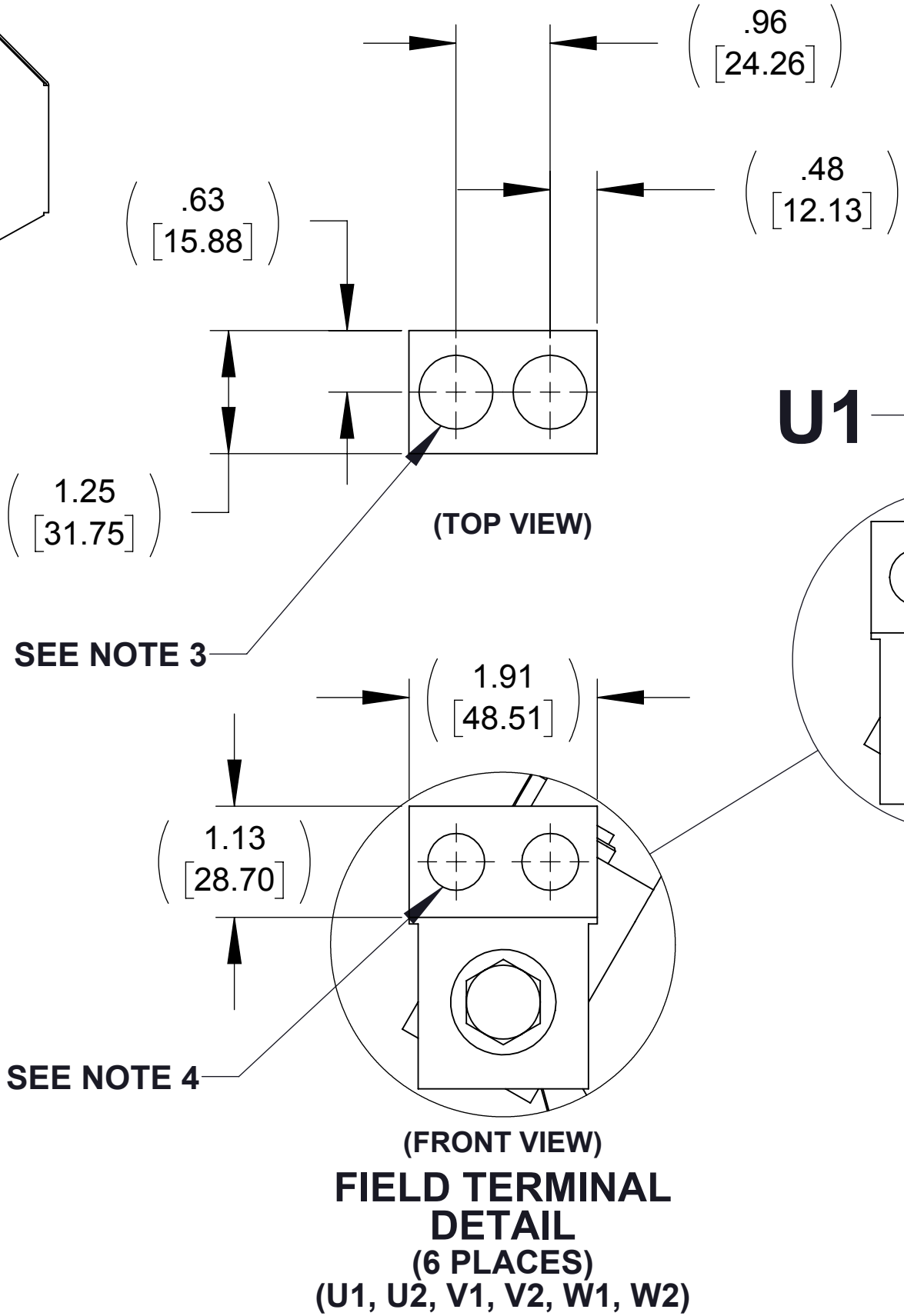
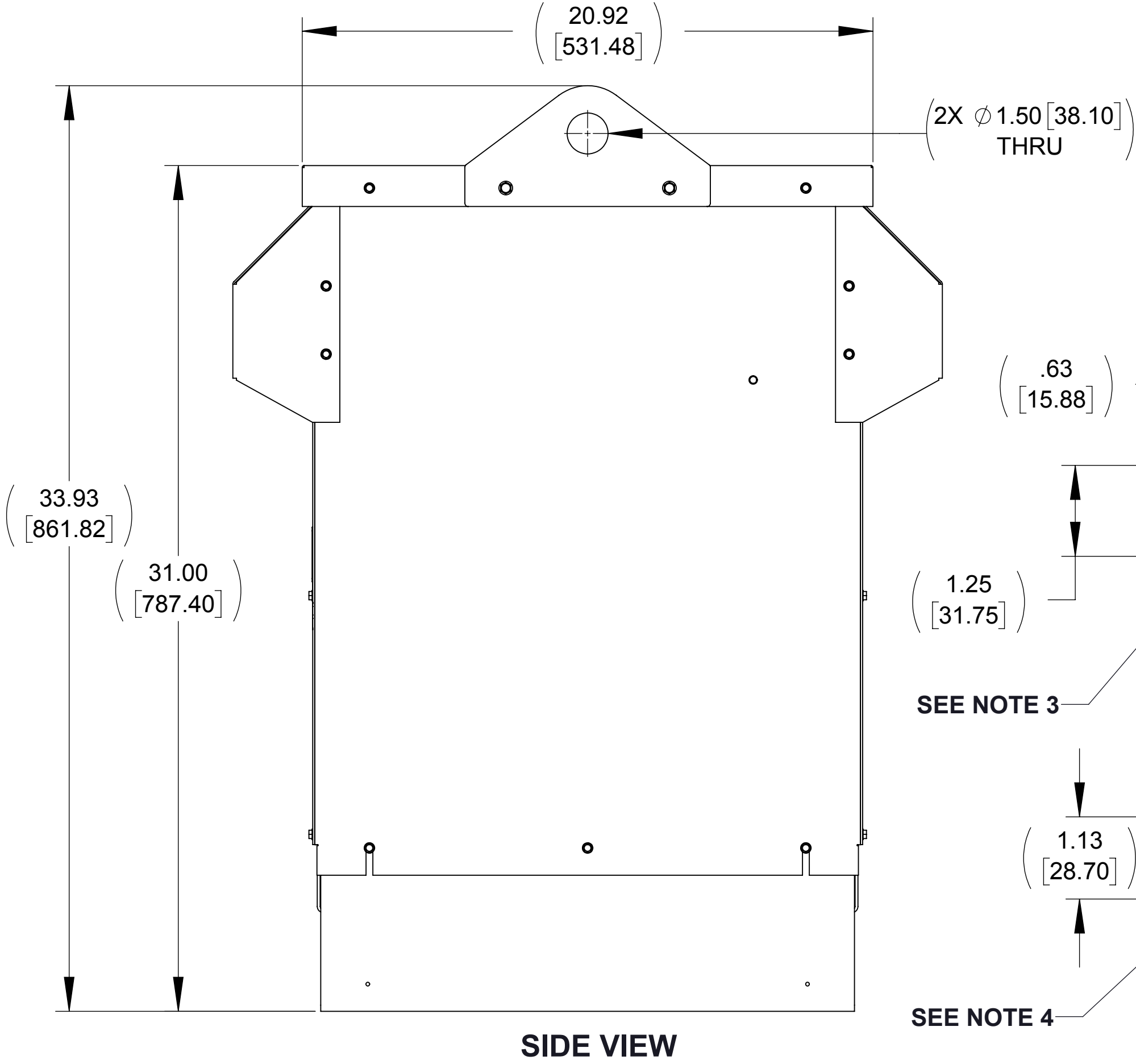
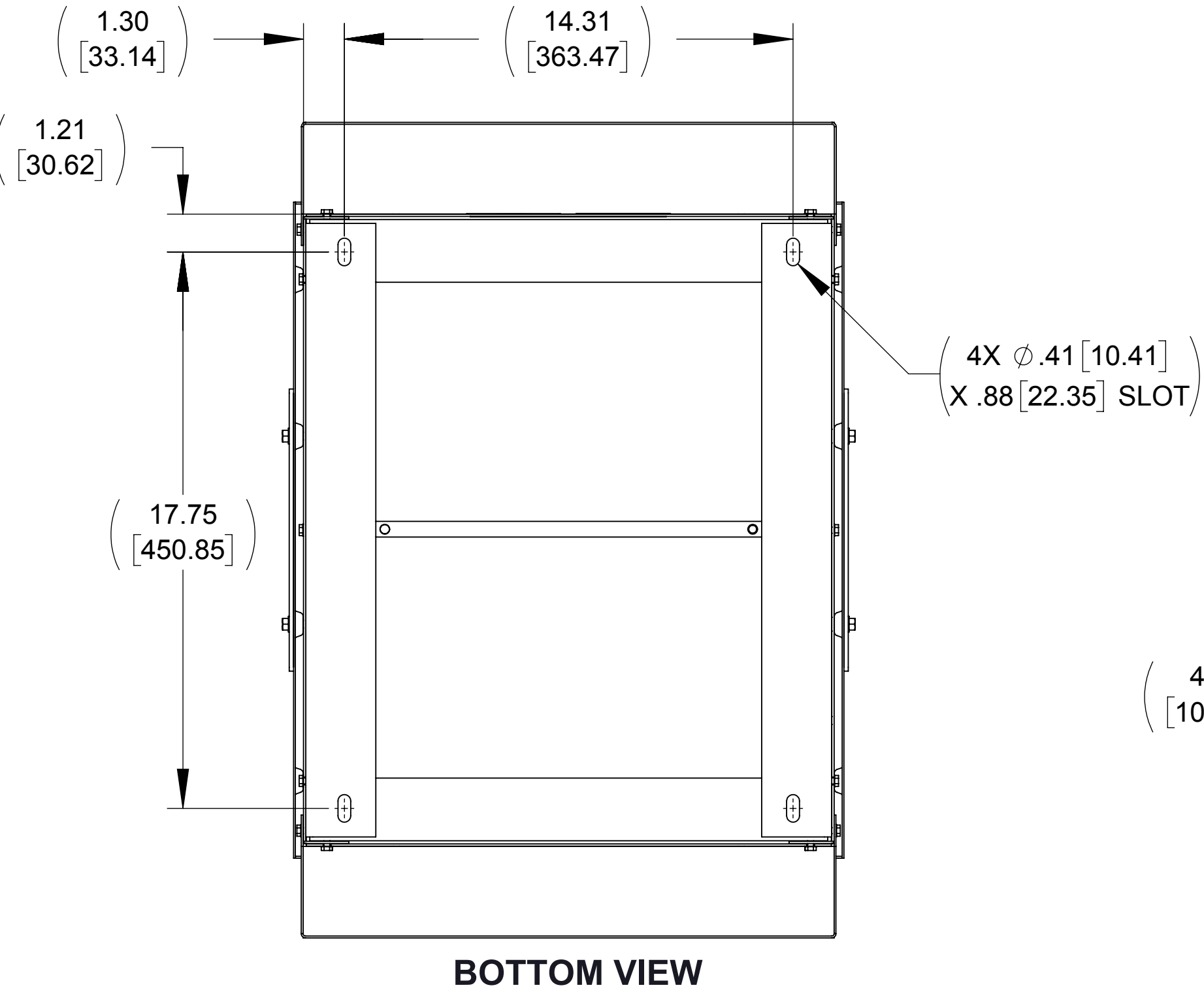
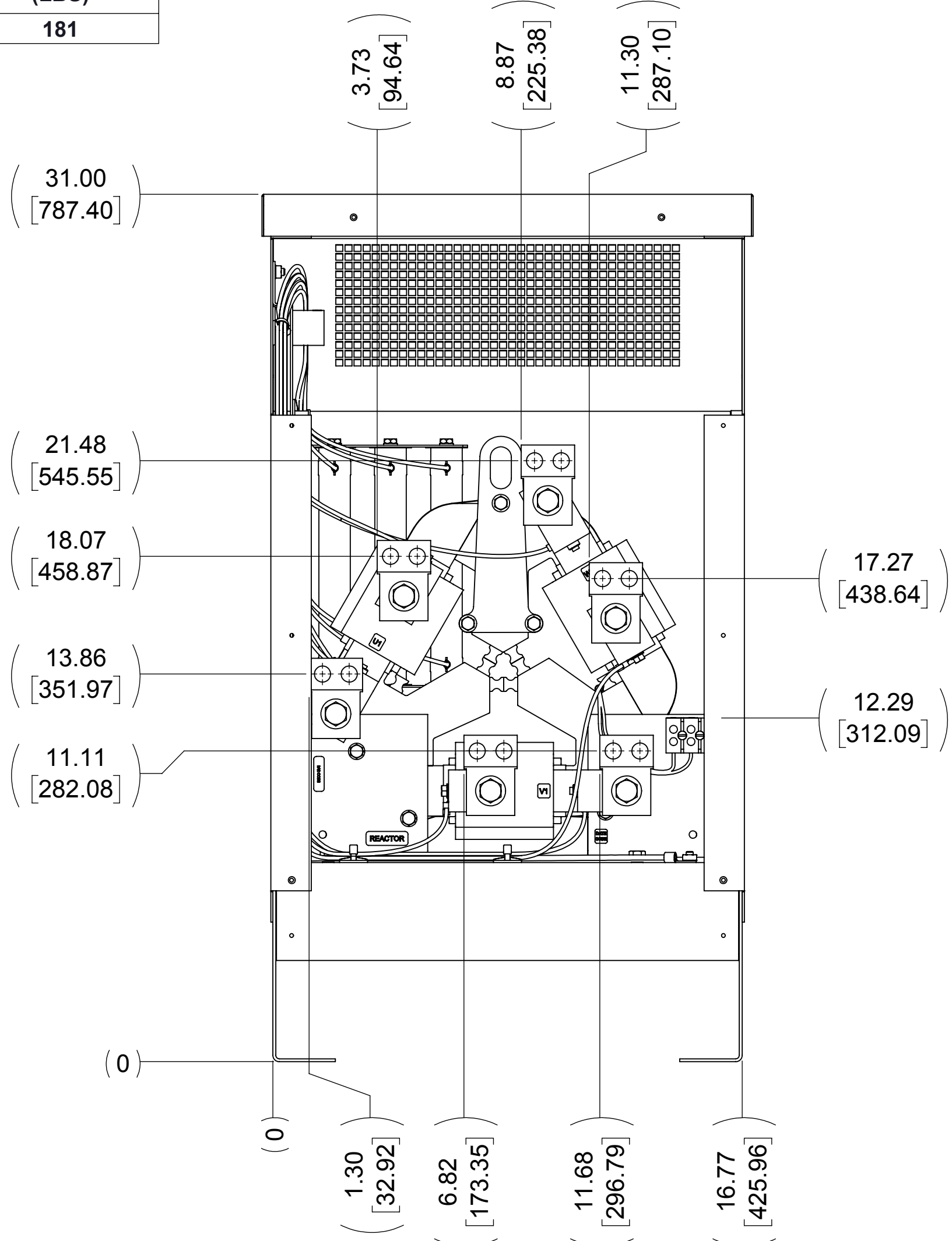
A

D

C

B

A



NOTES:

1. WIRE RANGE: 4 - 18 AWG
2. TERMINAL SCREW TIGHTENING TORQUE: 16 IN/LBS, MAX.
3. WIRE RANGE: 350 kcmil - 6 AWG
4. TERMINAL SCREW TIGHTENING TORQUE: 500 IN/LBS, MAX.

THE COMPONENT, PART OR ASSEMBLY DESCRIBED IN THIS DOCUMENT MUST COMPLY WITH THE EU(EUROPEAN UNION) DIRECTIVE RoHS2		MATERIAL		CONFIDENTIAL AND PROPRIETARY INFORMATION THIS DOCUMENT CONTAINS CONFIDENTIAL AND PROPRIETARY INFORMATION OF MTE CORPORATION AND MAY NOT BE USED, COPIED OR DISCLOSED TO OTHERS EXCEPT WITH THE AUTHORIZED WRITTEN PERMISSION OF MTE CORPORATION			
CONTAINS <0.1% OF ANY SVHC BY WEIGHT PER REACH REGULATION				DESCRIPTION			
UNLESS OTHERWISE SPECIFIED DIMENSIONS ARE IN INCHES [MM] TOLERANCES ARE: ANGLES: ± 1 ° 1 PLACE .X: ± .1 [2.5] 2 PLACE .XX: ± .03 [0.76] 3 PLACE .XXX: ± .010 [0.254]		<div>MTE</div> <div>AN BL POWER ELECTRONICS COMPANY</div> <div>N83 W13330 Leon Road Menomonee Falls, WI 53051 USA 800.455.4683 262.253.8200</div>		DV SENTRY 305A 380-600V FILTER, NEMA 3R ENCL.			
		DRAWN MM	DATE 07/31/14	SIZE D	DWG No. CD DVSW0305E	REV 02	SHEET 1 OF 1
		CHECKED RH	DATE 03/18/15				
		APPROVED RH	DATE 03/18/15				