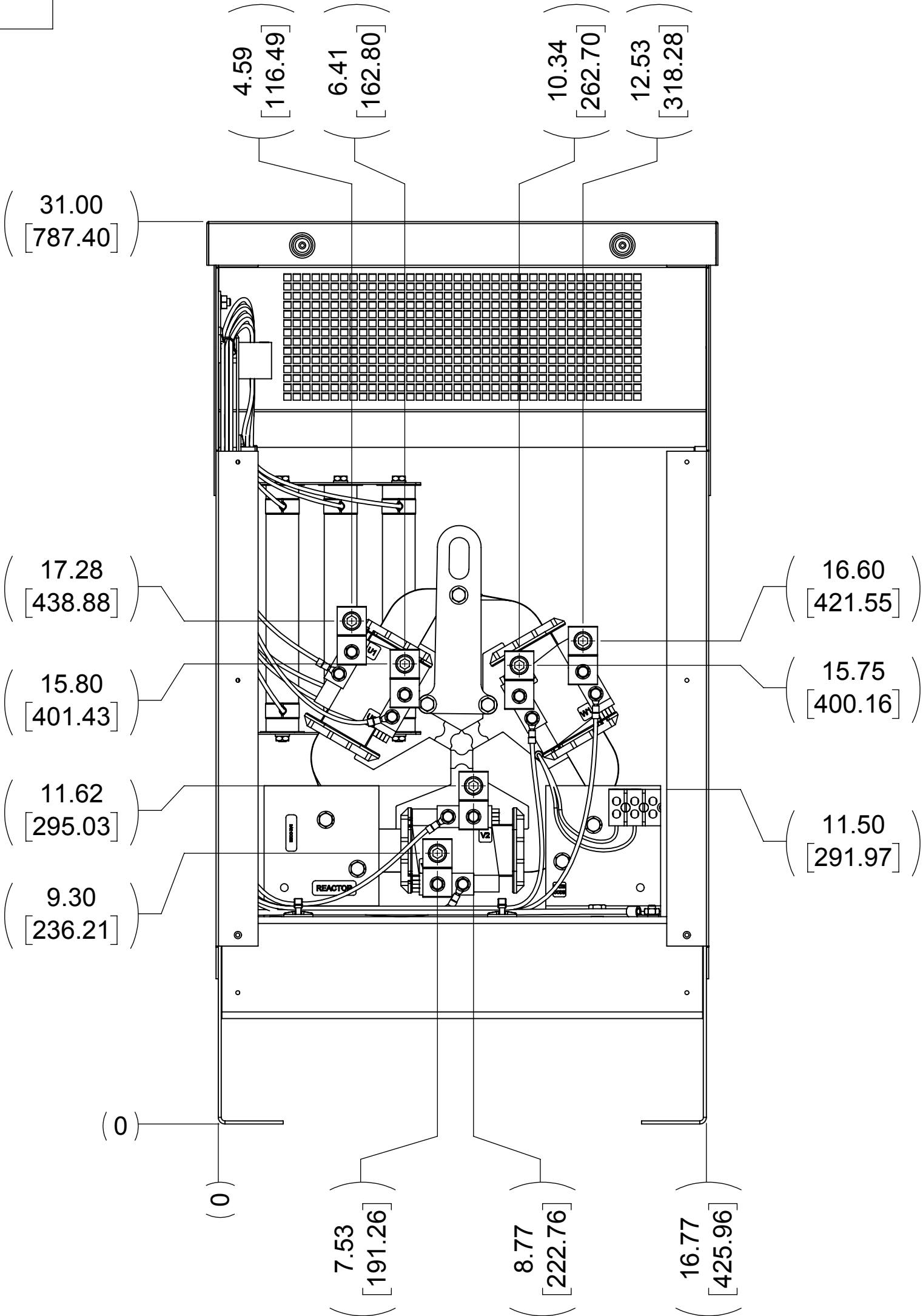
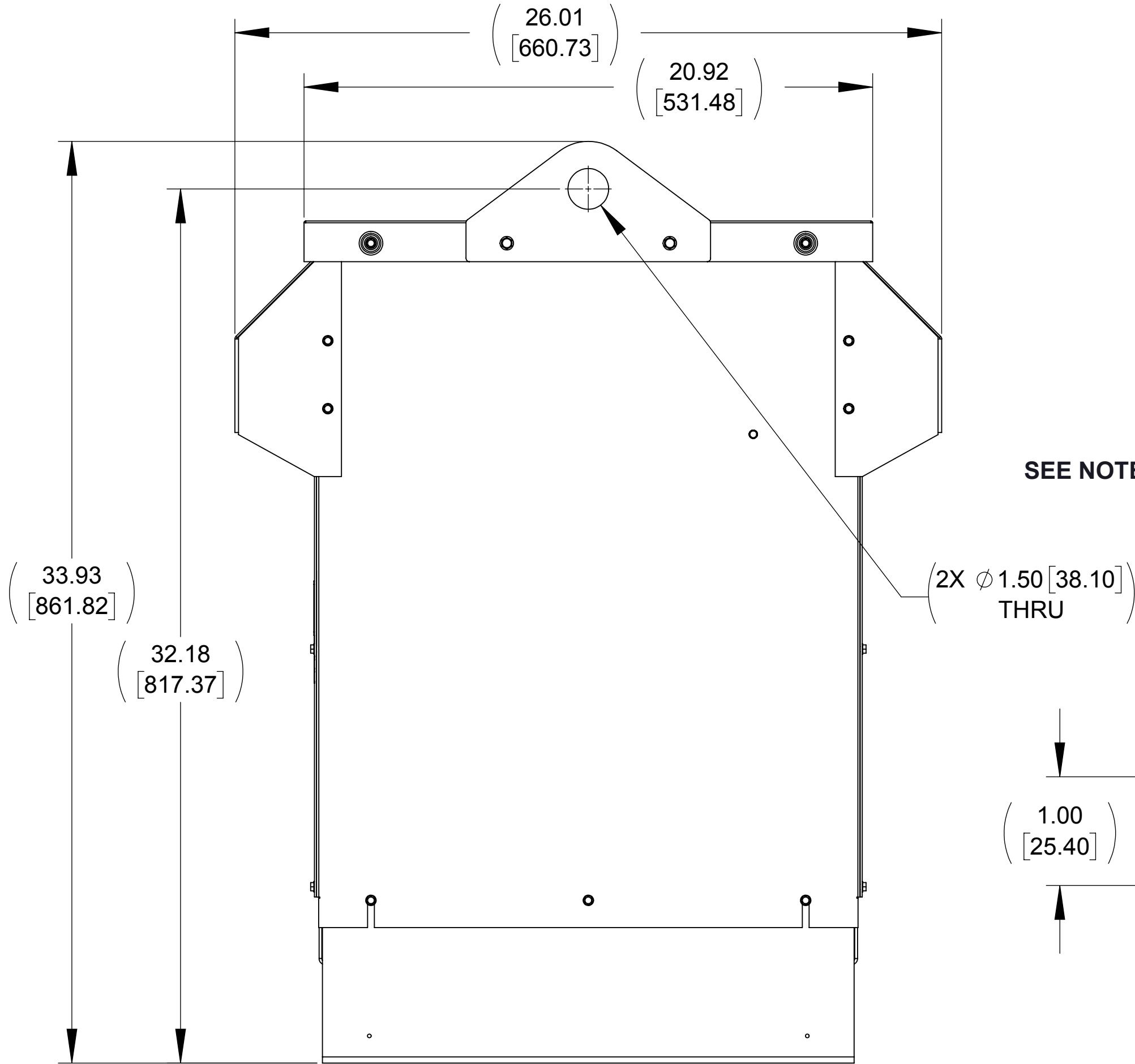


APPROX WEIGHT
(LBS.)
158

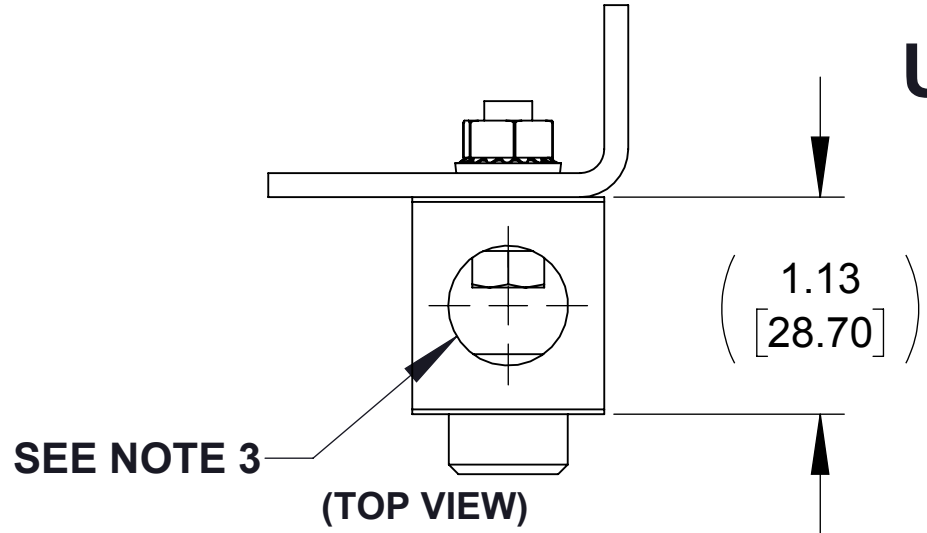
ECO No	DESCRIPTION	REV BY	DATE
M9346	LABEL GRAPHICS UPDATED	JT	10/21/14



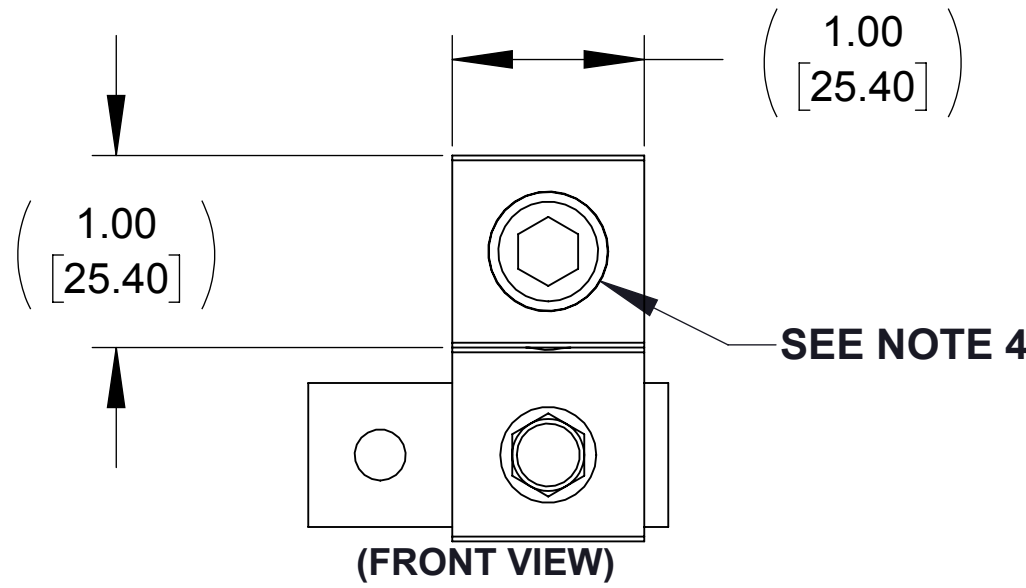
FRONT VIEW
(PANEL REMOVED)



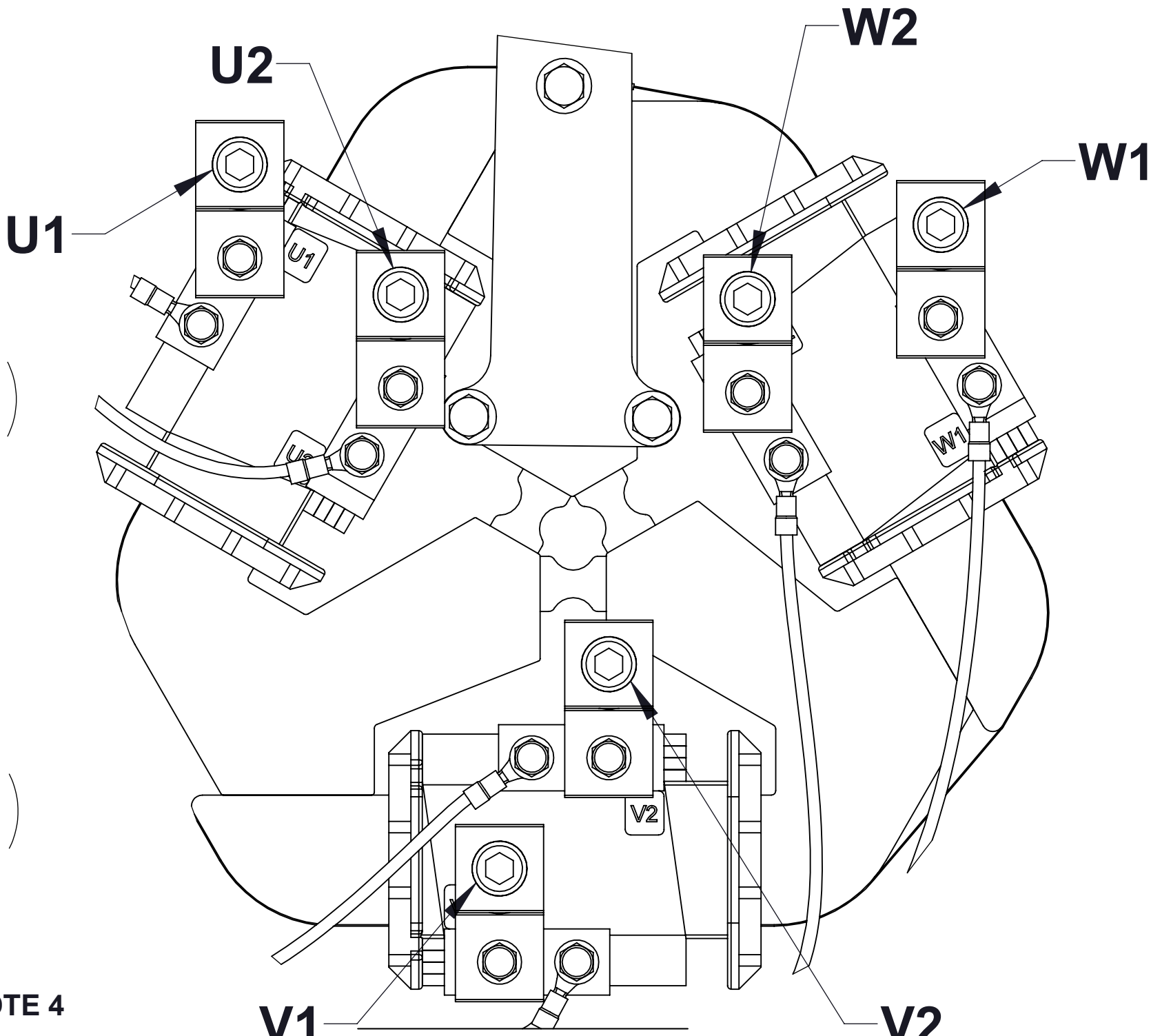
SIDE VIEW



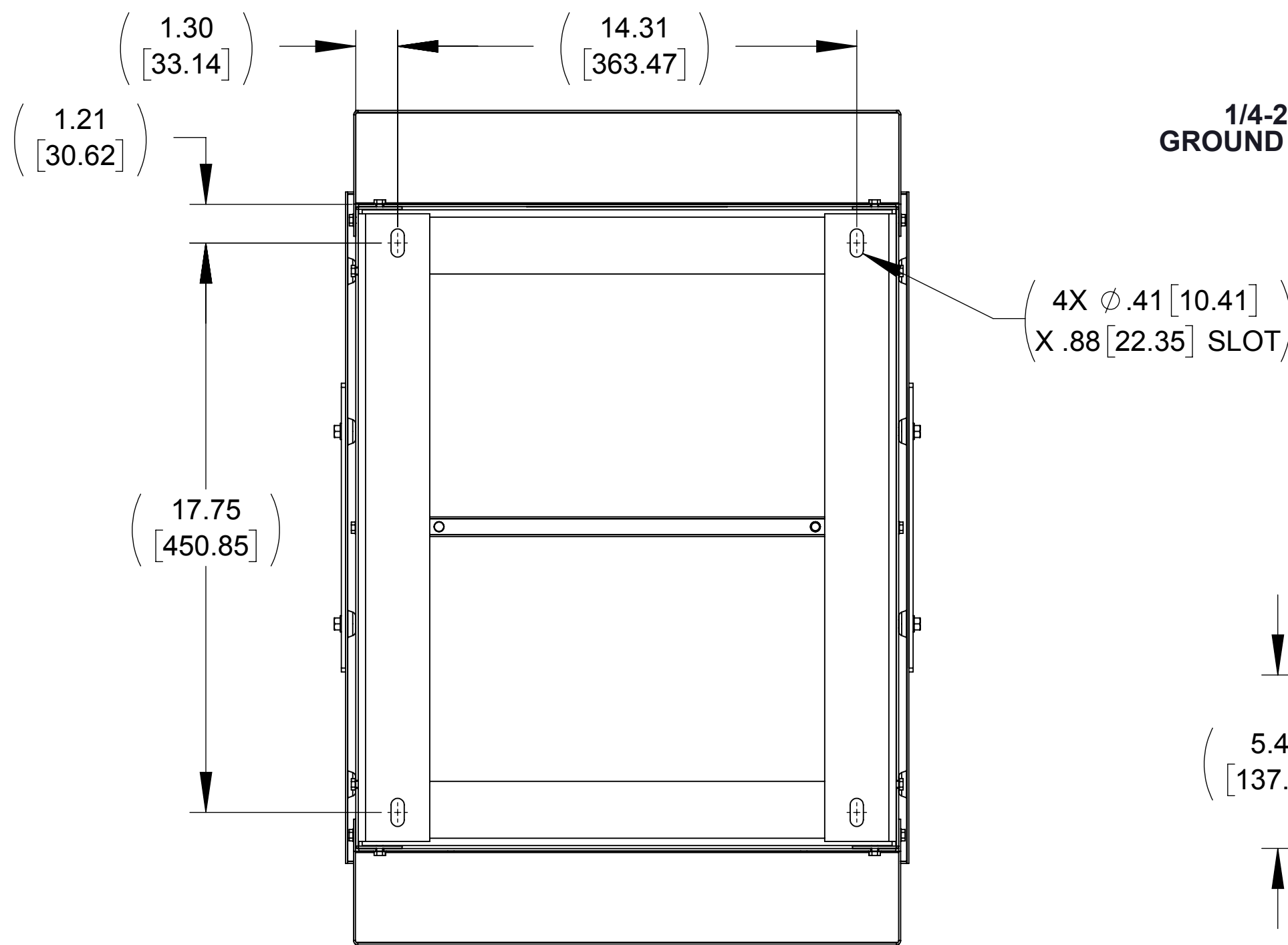
(TOP VIEW)



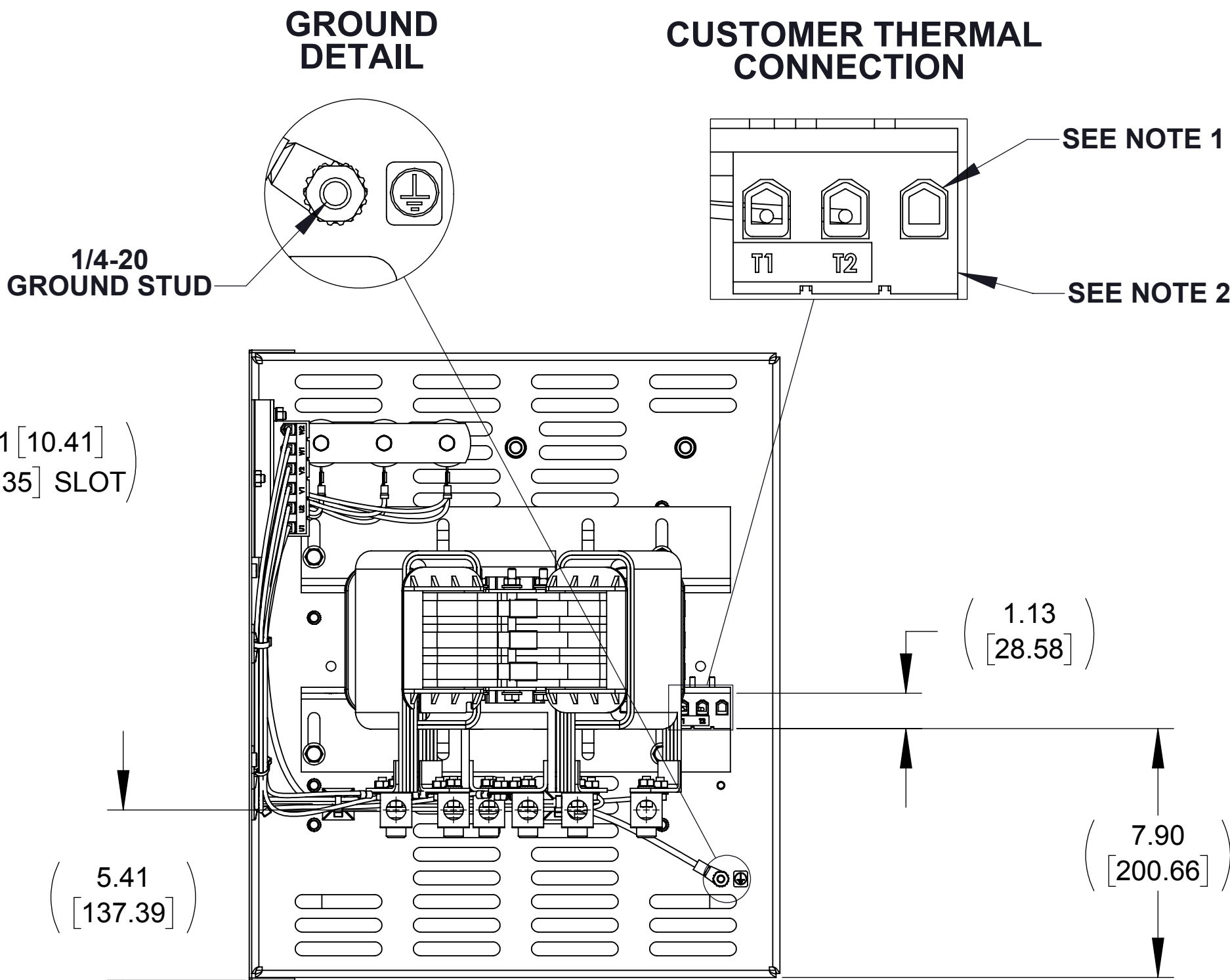
FIELD TERMINAL
DETAIL
(6 PLACES)
(U1, U2, V1, V2, W1, W2)



CUSTOMER CONNECTION
DETAIL VIEW



BOTTOM VIEW



TOP VIEW
(PANELS REMOVED)

NOTES:

1. WIRE RANGE: 4 - 18 AWG
2. TERMINAL SCREW TIGHTENING TORQUE: 16 IN/LBS, MAX.
3. WIRE RANGE: 250 kcmil - 6 AWG
4. TERMINAL SCREW TIGHTENING TORQUE: 275 IN/LBS, MAX.

THE COMPONENT, PART OR ASSEMBLY DESCRIBED IN THIS DOCUMENT MUST COMPLY WITH THE EU (EUROPEAN UNION) DIRECTIVE RoHS2		MATERIAL		CONFIDENTIAL AND PROPRIETARY INFORMATION THIS DOCUMENT CONTAINS CONFIDENTIAL AND PROPRIETARY INFORMATION OF MTE CORPORATION AND MAY NOT BE USED, COPIED OR DISCLOSED TO OTHERS EXCEPT WITH THE AUTHORIZED WRITTEN PERMISSION OF MTE CORPORATION		
CONTAINS <0.1% OF ANY SVHC BY WEIGHT PER REACH REGULATION				DESCRIPTION		
UNLESS OTHERWISE SPECIFIED DIMENSIONS ARE IN INCHES [MM] TOLERANCES ARE: ANGLES: ± 1 ° 1 PLACE .X: ± .1 [2.5] 2 PLACE .XX: ± .03 [0.76] 3 PLACE .XXX: ± .010 [0.254]		DRAWN MM DATE 07/25/14		DV SENTRY 160A 380-600V FILTER, NEMA 3R ENCL.		
		CHECKED TM DATE 10/22/14		SIZE D		
		APPROVED TM DATE 10/22/14		DWG No. CD DVSW0160E		
				REV 01		
				SCALE 1:4		
				SHEET 1 OF 1		