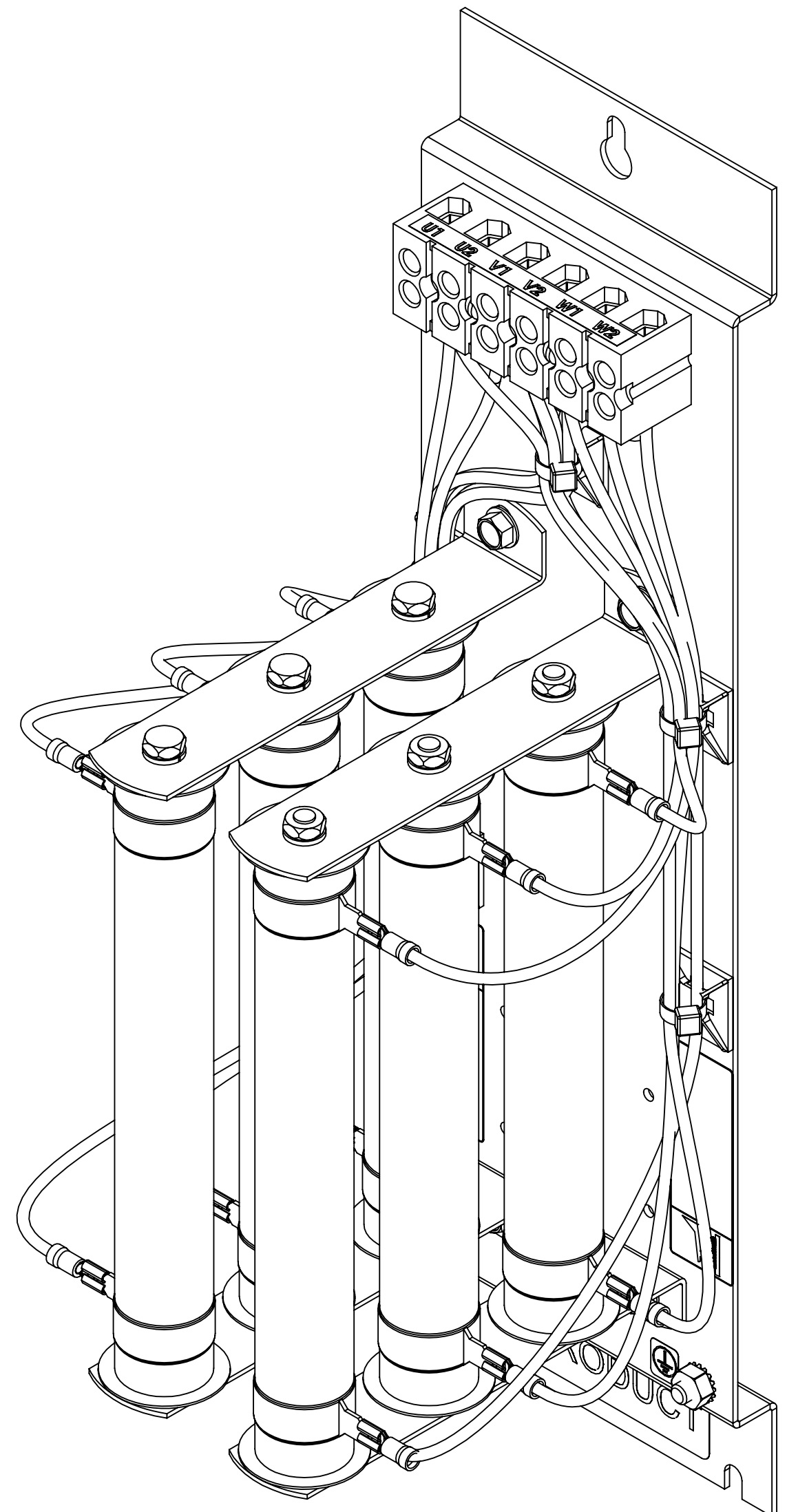
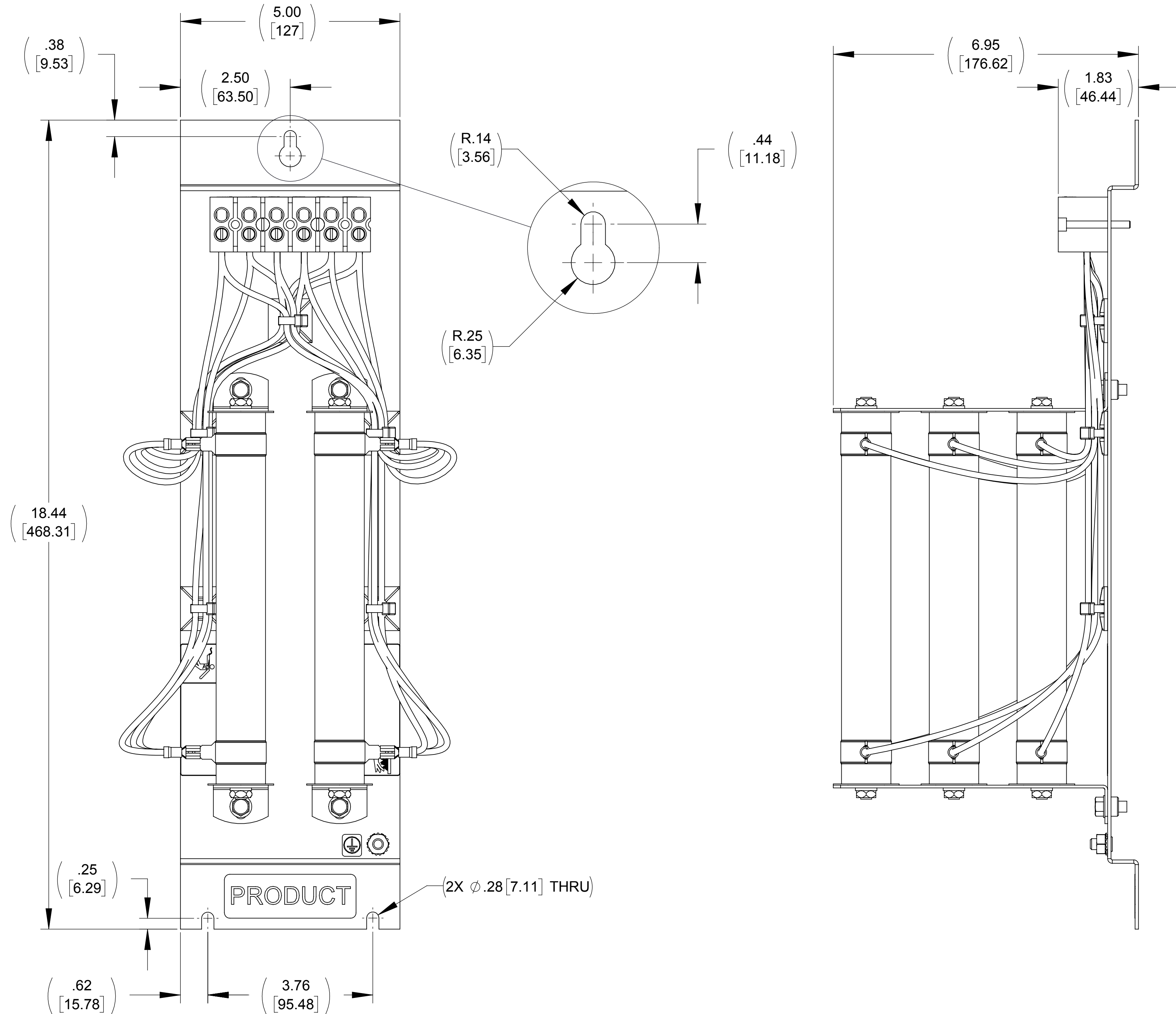
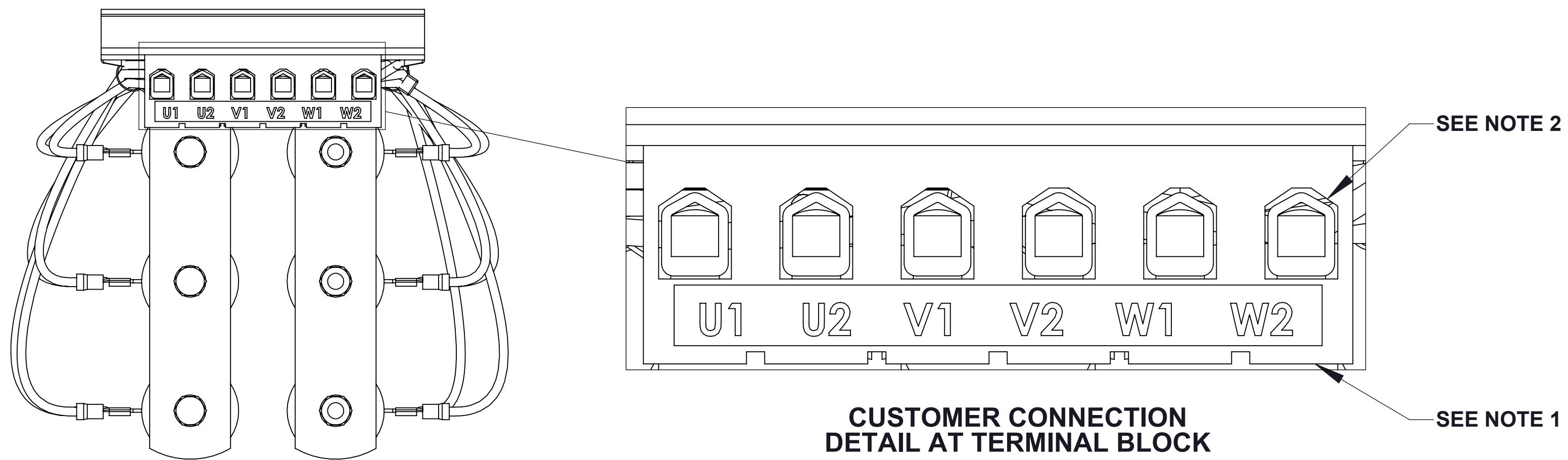



ECO No	DESCRIPTION	REV BY	DATE



**NOTES:**

- 1. TERMINAL SCREW TIGHTENING TORQUE: 16 IN/LBS, MAX**
- 2. WIRE RANGE: 4 - 18 AWG**

THE COMPONENT, PART OR ASSEMBLY DESCRIBED IN THIS DOCUMENT MUST COMPLY WITH THE EU(EUROPEAN UNION) DIRECTIVE RoHS2		MATERIAL		CONFIDENTIAL AND PROPRIETARY INFORMATION THIS DOCUMENT CONTAINS CONFIDENTIAL AND PROPRIETARY INFORMATION OF MTE CORPORATION AND MAY NOT BE USED, COPIED OR DISCLOSED TO OTHERS EXCEPT WITH THE AUTHORIZED WRITTEN PERMISSION OF MTE CORPORATION							
CONTAINS <0.1% OF ANY SVHC BY WEIGHT PER REACH REGULATION				DESCRIPTION  RESISTOR ASSEMBLY 16 OHM, 300 WATTS							
UNLESS OTHERWISE SPECIFIED DIMENSIONS ARE IN INCHES [MM] TOLERANCES ARE:  ANGLES: ± 1 °  1 PLACE .X: ± .1 [2.5]  2 PLACE .XX: ± .03 [0.76]  3 PLACE .XXX: ± .010 [0.254]		  N83 W13330 Leon Road Menomonee Falls, WI 53051 USA 800.455-4683 262.253.8200						DRAWN MM		DATE 07/16/14	
		CHECKED TS		DATE 07/22/14		SIZE D		DWG No. CD RESPANEL-014		REV 00	
		APPROVED TM		DATE 08/29/14							
				SCALE 2:3		SHEET 1 OF 1					