

APPROX. WEIGHT (LBS)
159

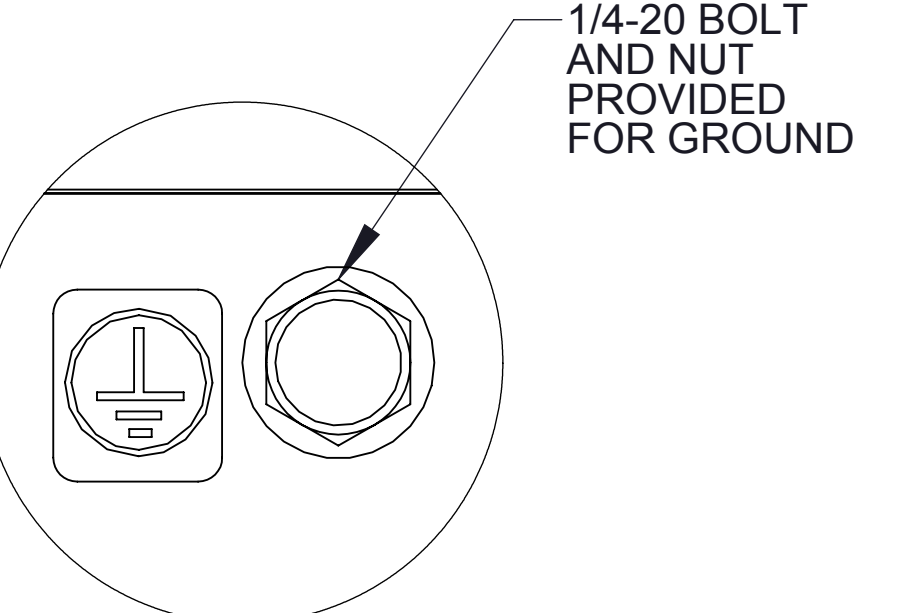
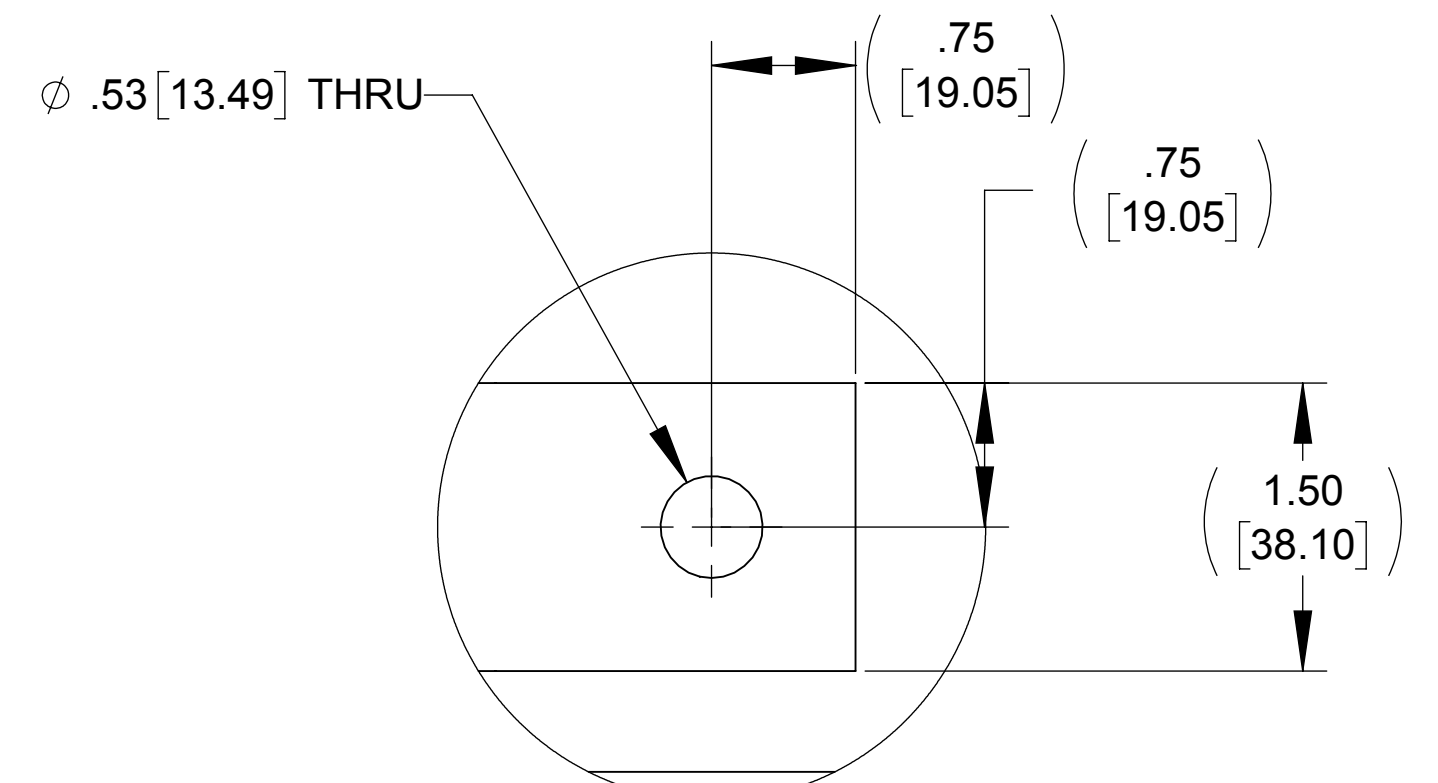
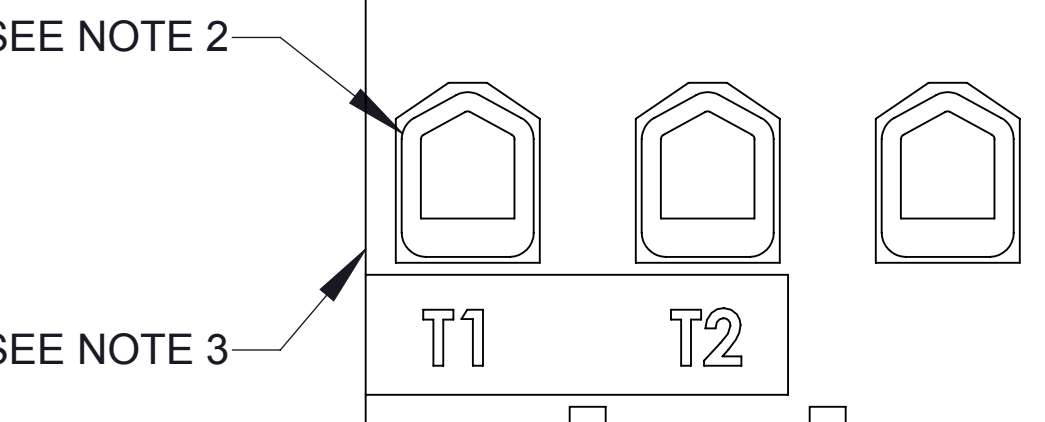
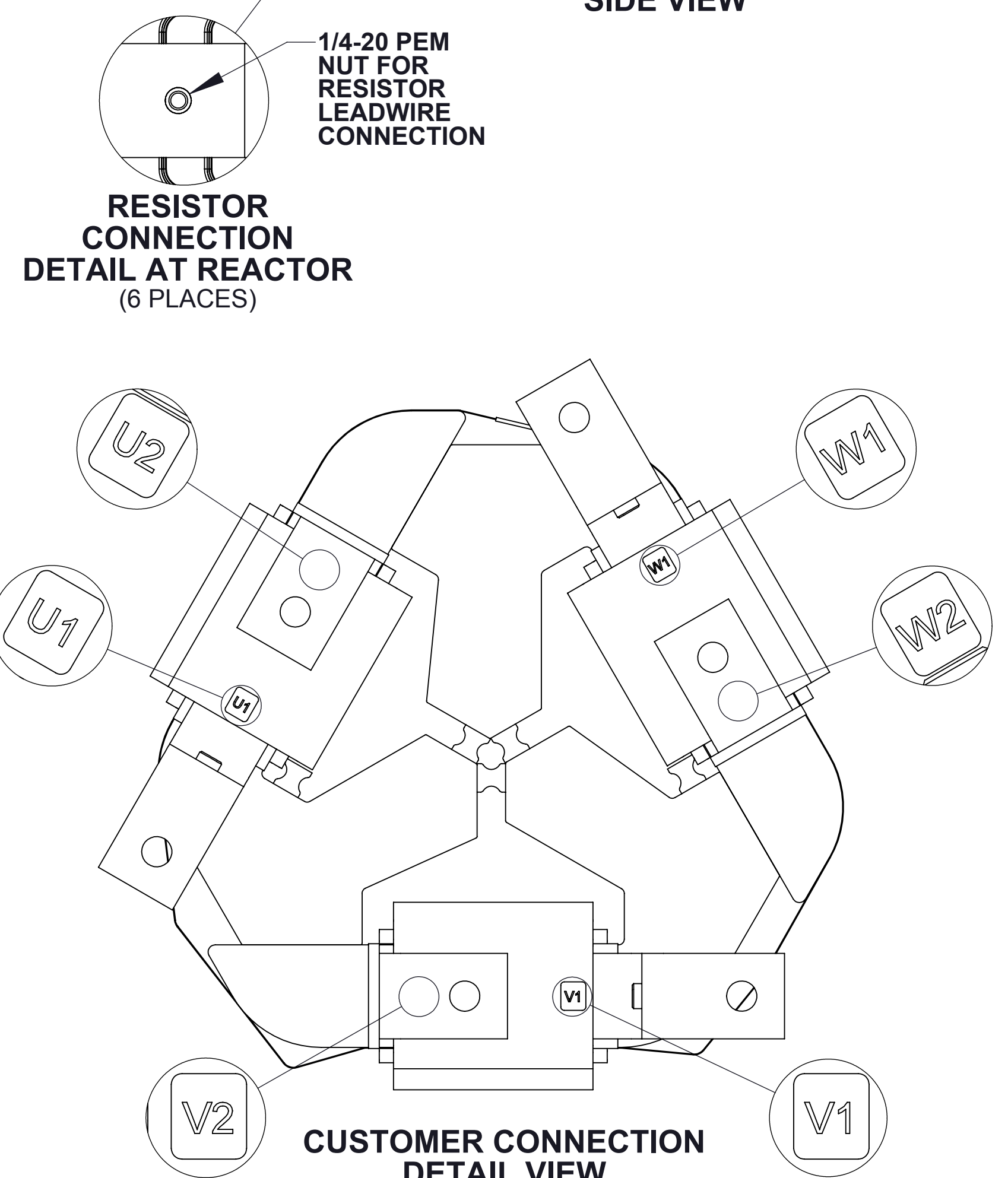
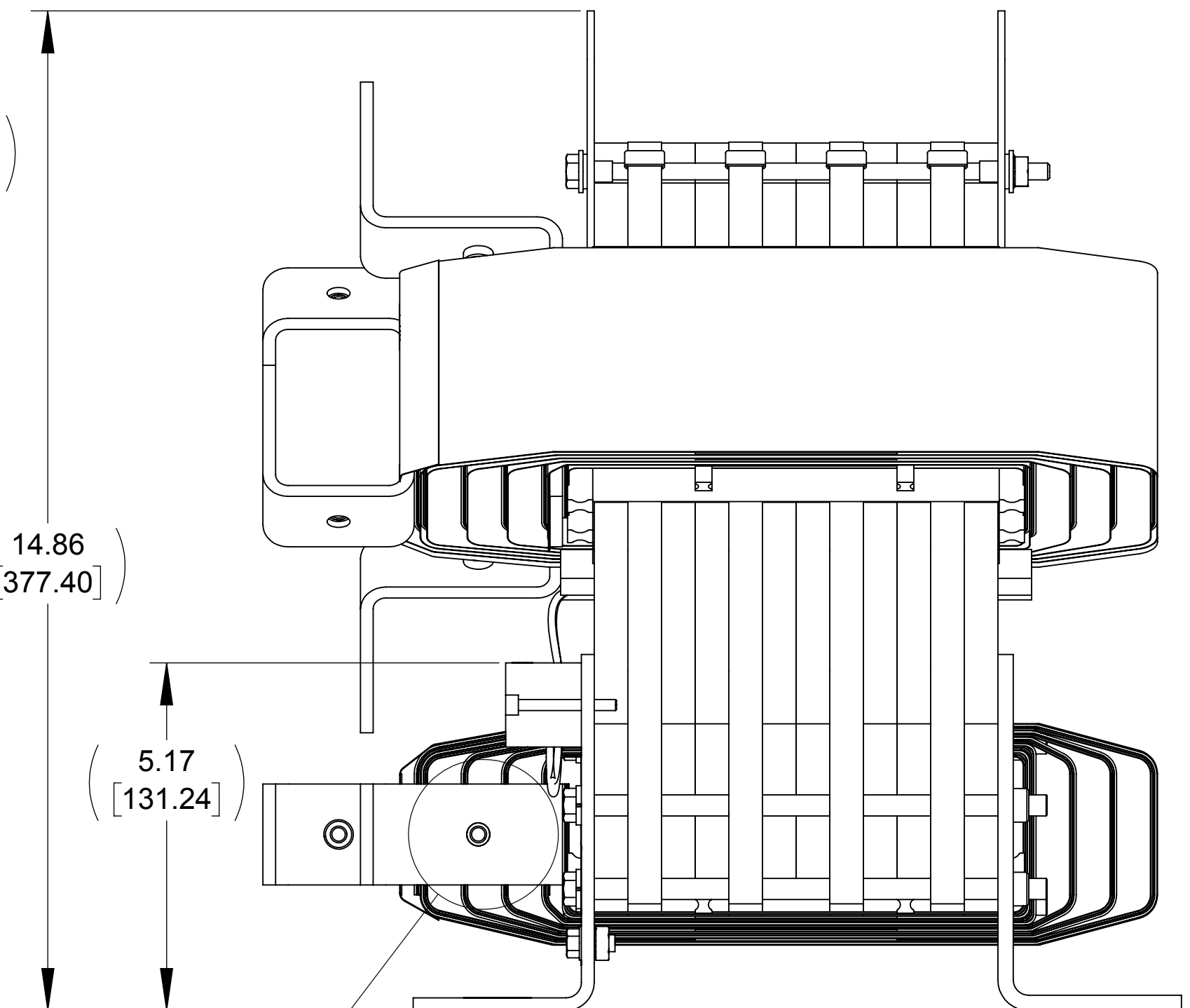
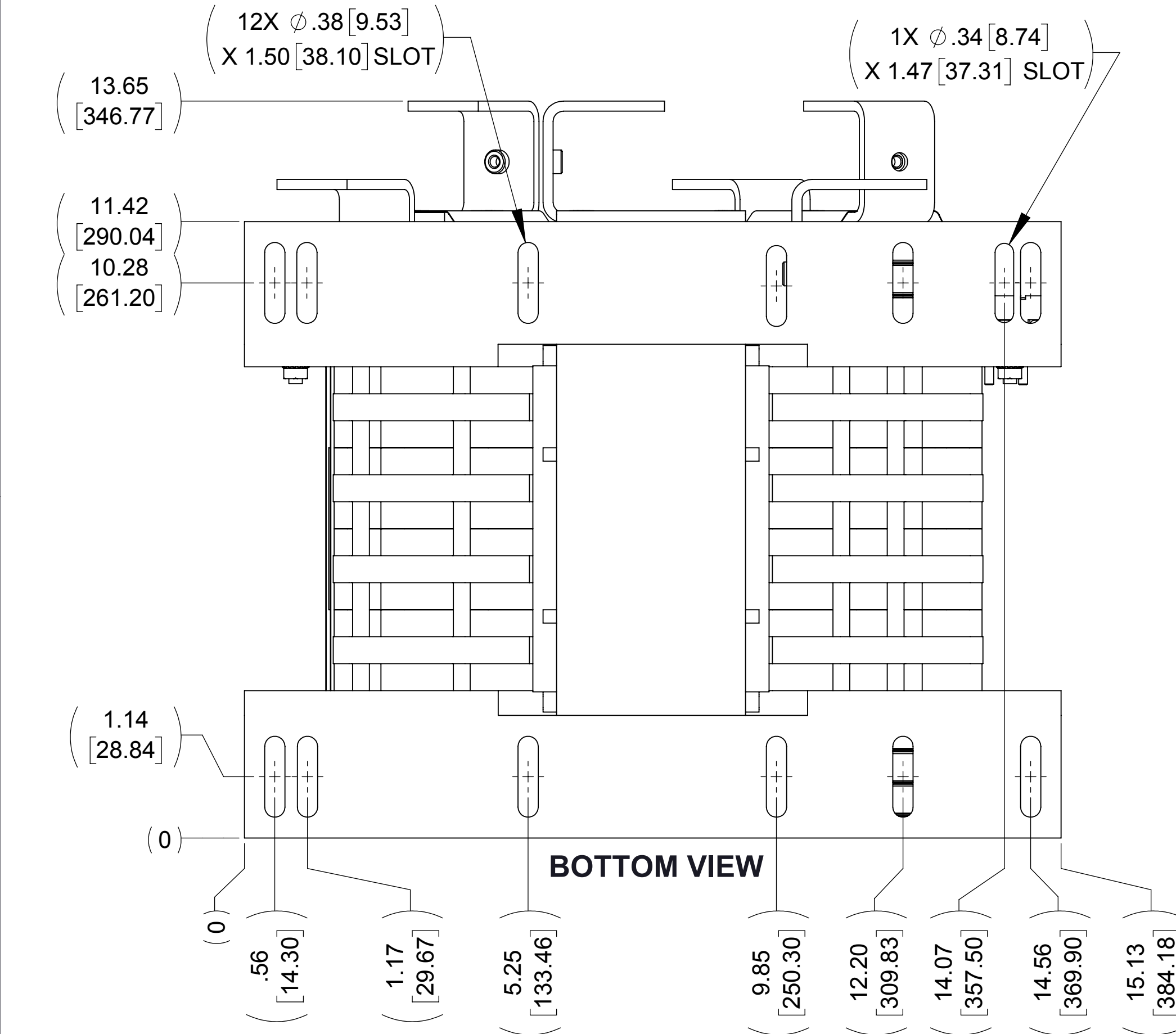
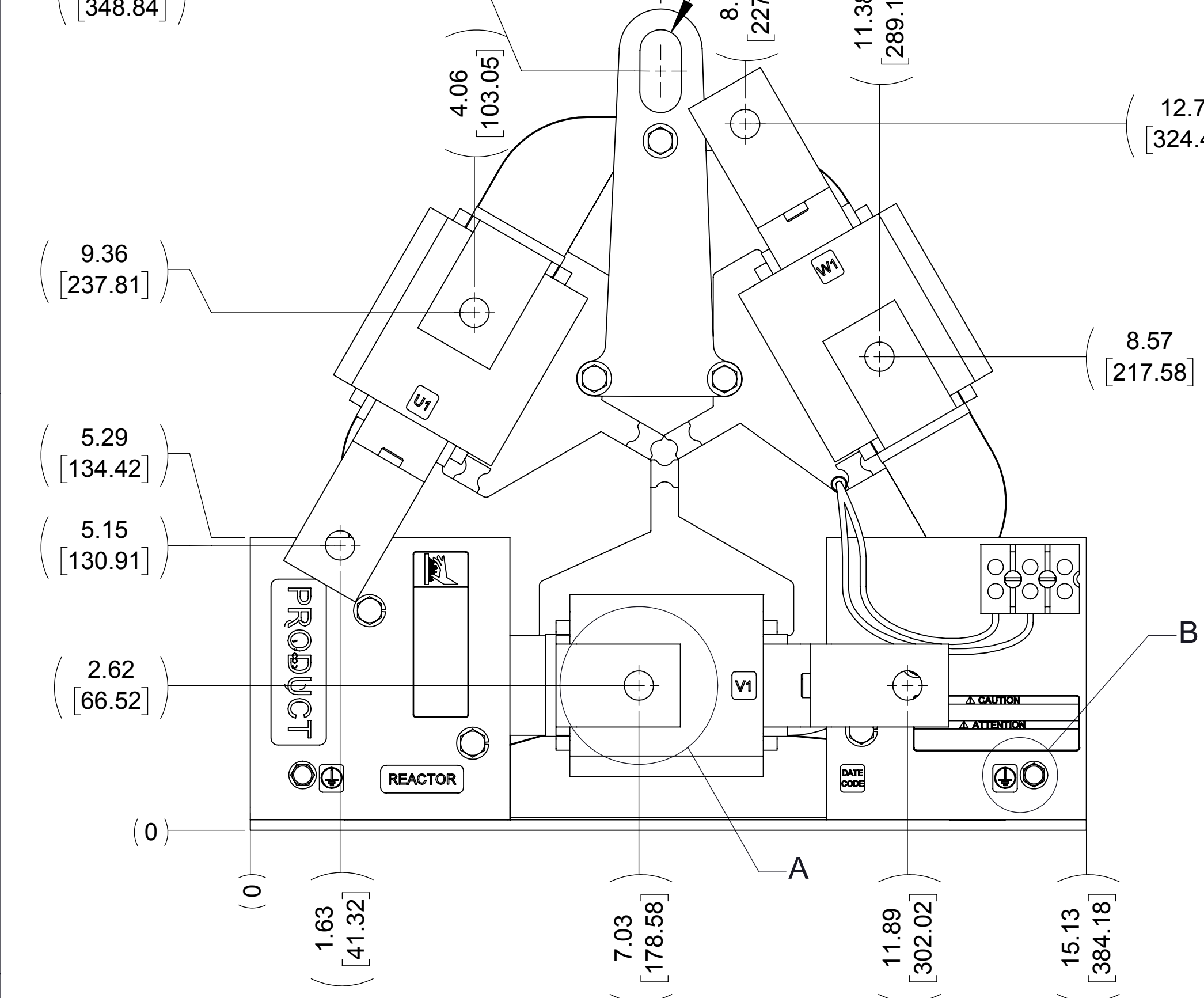
ECO No	DESCRIPTION	REV BY	DATE
M10379	UPDATED DESCRIPTION	AB	08/02/18

D

C

B

A



- NOTES:
1. FILTER REQUIRES MTE P/N: RESPANEL-014 (QTY. 1)
 2. WIRE RANGE: 4 - 18 AWG.
 3. TERMINAL SCREW TIGHTENING TORQUE: 16 IN/LBS, MAX.

THE COMPONENT, PART OR ASSEMBLY DESCRIBED IN THIS DOCUMENT MUST COMPLY WITH THE EU(EUROPEAN UNION) DIRECTIVE RoHS2		MATERIAL		CONFIDENTIAL AND PROPRIETARY INFORMATION THIS DOCUMENT CONTAINS CONFIDENTIAL AND PROPRIETARY INFORMATION OF MTE CORPORATION AND MAY NOT BE USED, COPIED OR DISCLOSED TO OTHERS EXCEPT WITH THE AUTHORIZED WRITTEN PERMISSION OF MTE CORPORATION	
CONTAINS <0.1% OF ANY SVHC BY WEIGHT PER REACH REGULATION				DESCRIPTION	
UNLESS OTHERWISE SPECIFIED DIMENSIONS ARE IN INCHES [MM] TOLERANCES ARE: ANGLES: ± 1 ° 1 PLACE .X: ± .1 [2.5] 2 PLACE .XX: ± .03 [0.76] 3 PLACE .XXX: ± .010 [0.254]		DRAWN JT 07/30/14		DV SENTRY 515A 208-600V FILTER, OPEN PANEL	
		CHECKED AB 08/02/18		SIZE D CD DVSP0515E	
		APPROVED AK 09/26/18		REV 04	
		SCALE 1:2		SHEET 1 OF 1	

D

C

B

A

A