

APPROX WEIGHT
(LBS)
125

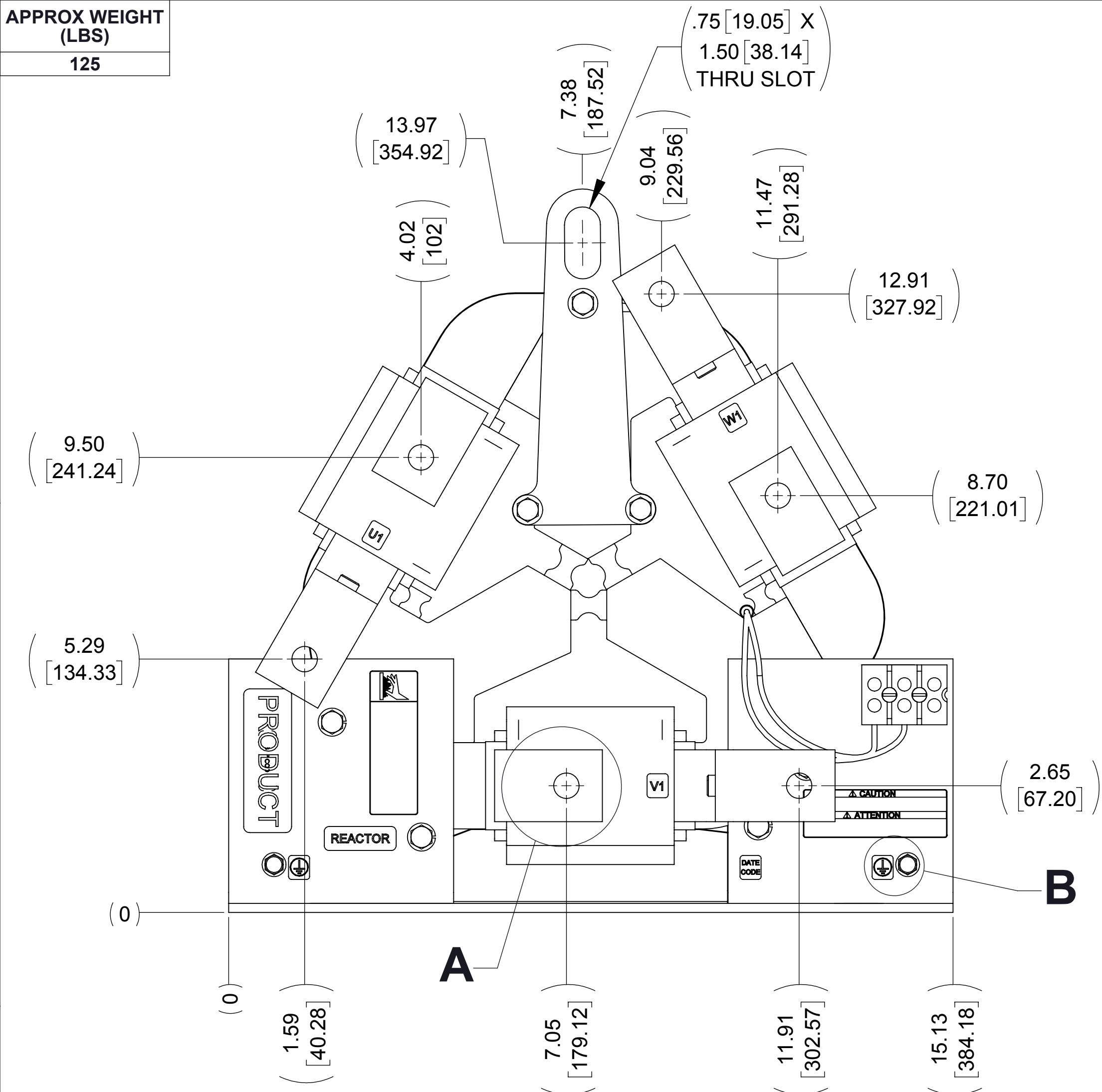
ECO No	DESCRIPTION	REV BY	DATE
M9495	DIM 12.18 WAS 11.83	RAH	03/17/15

D

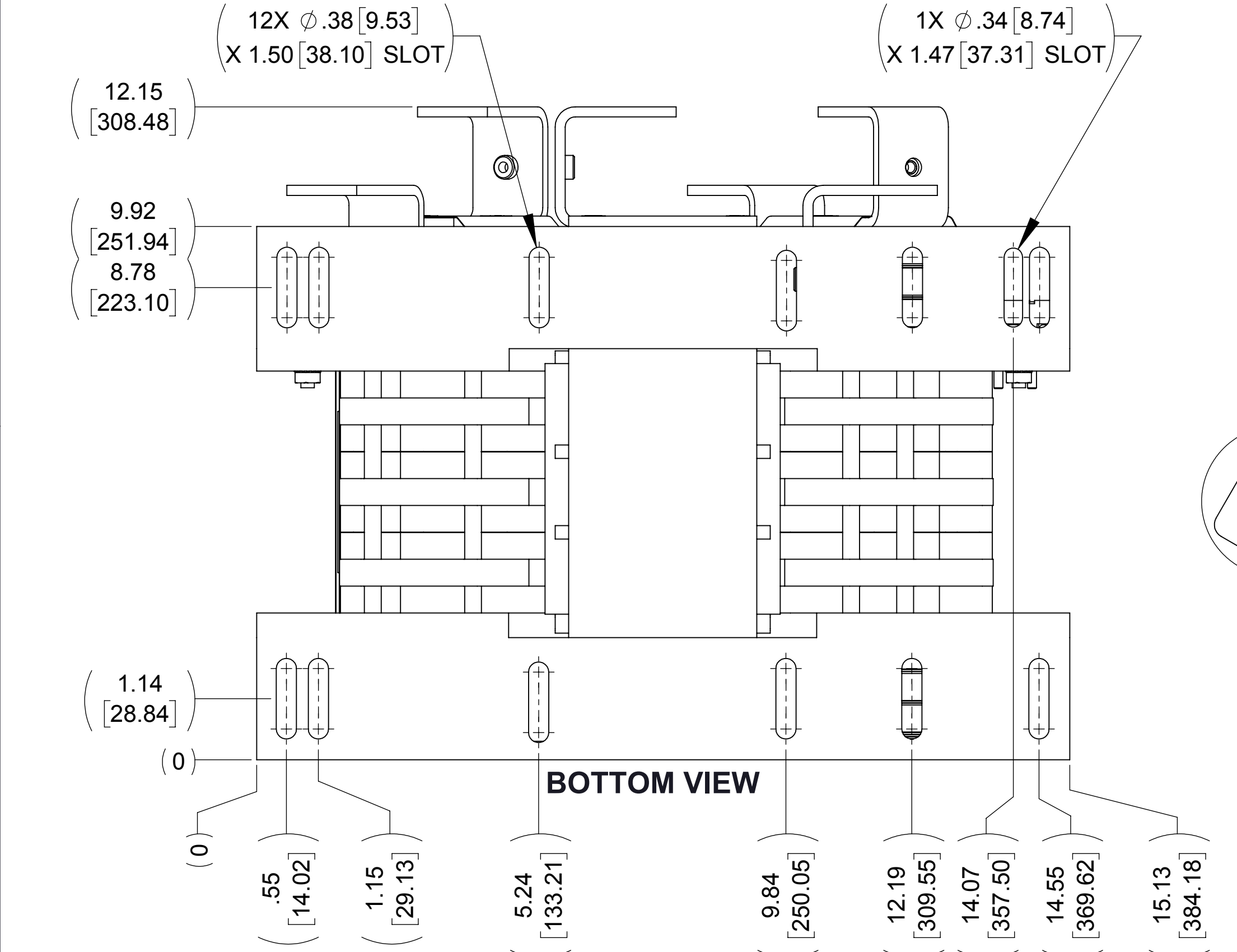
C

B

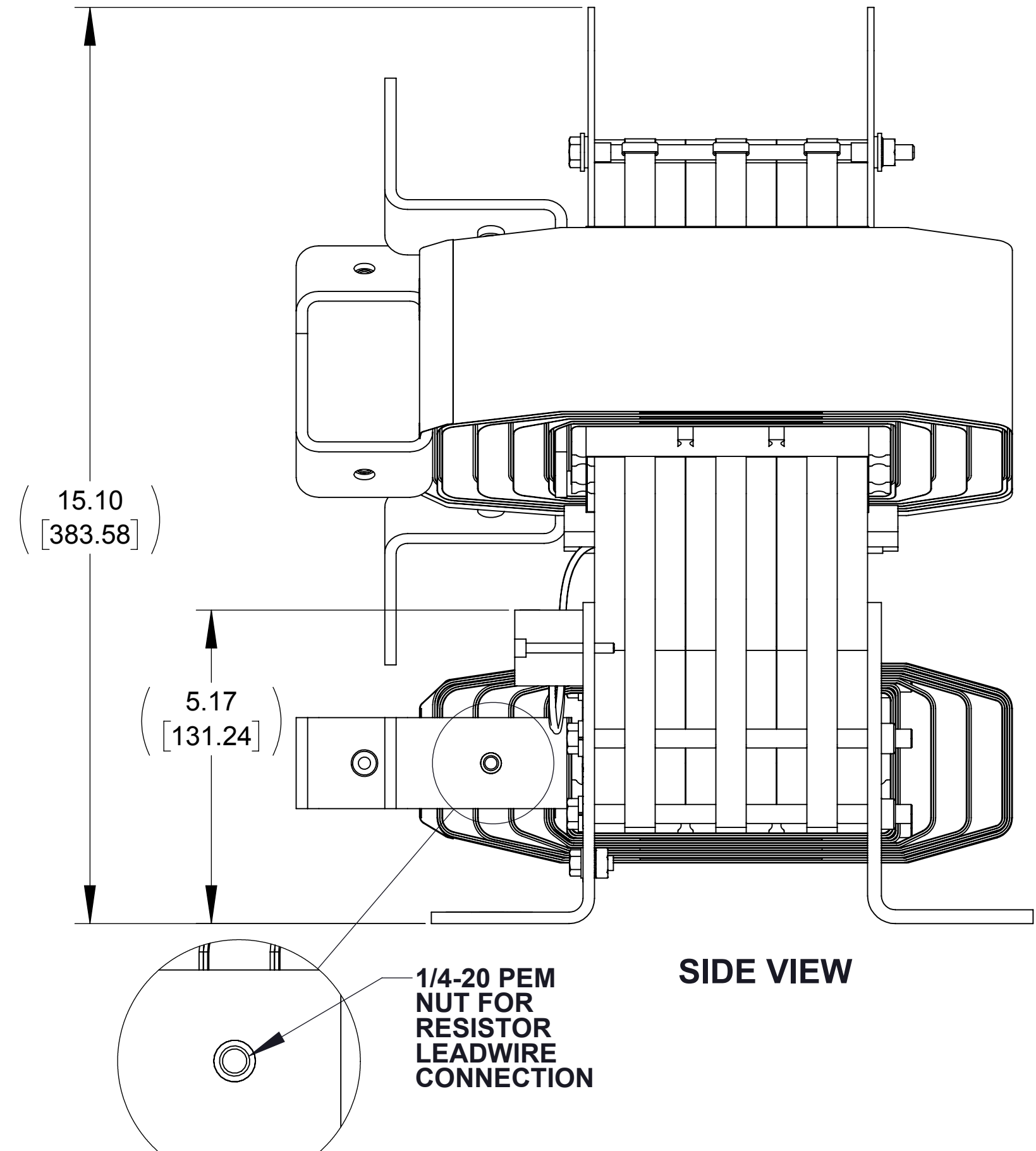
A



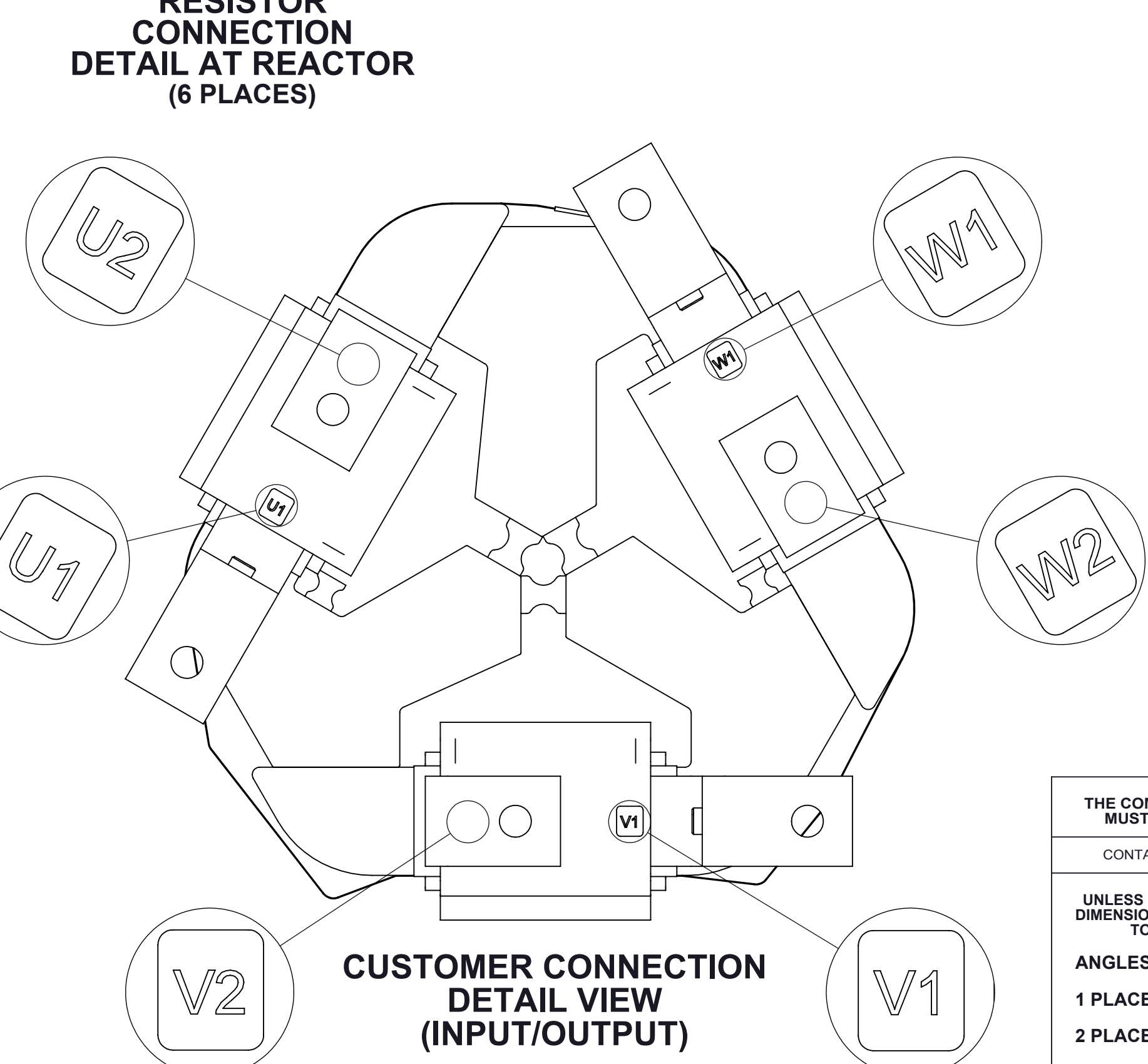
FRONT VIEW



BOTTOM VIEW

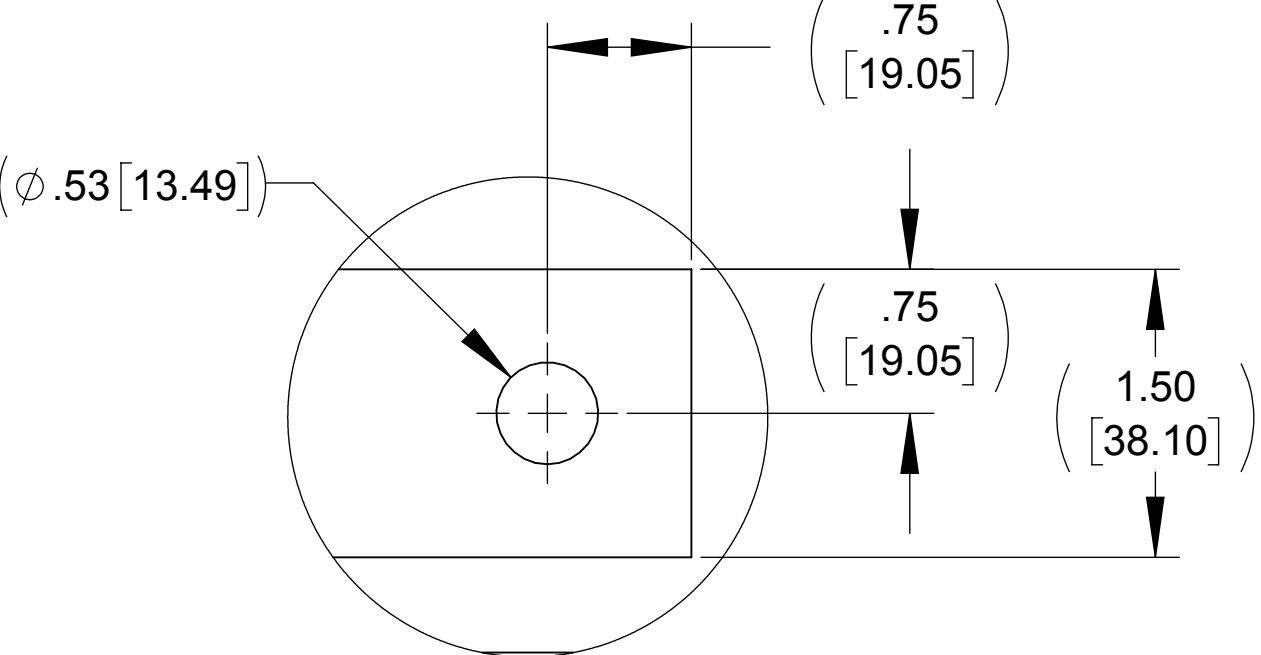
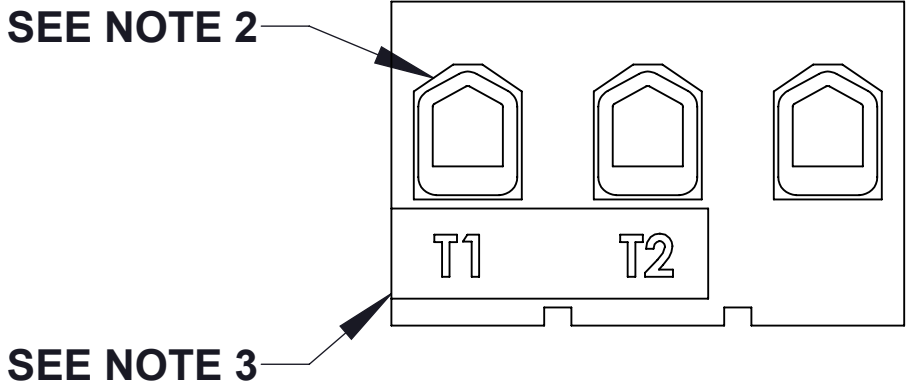


SIDE VIEW

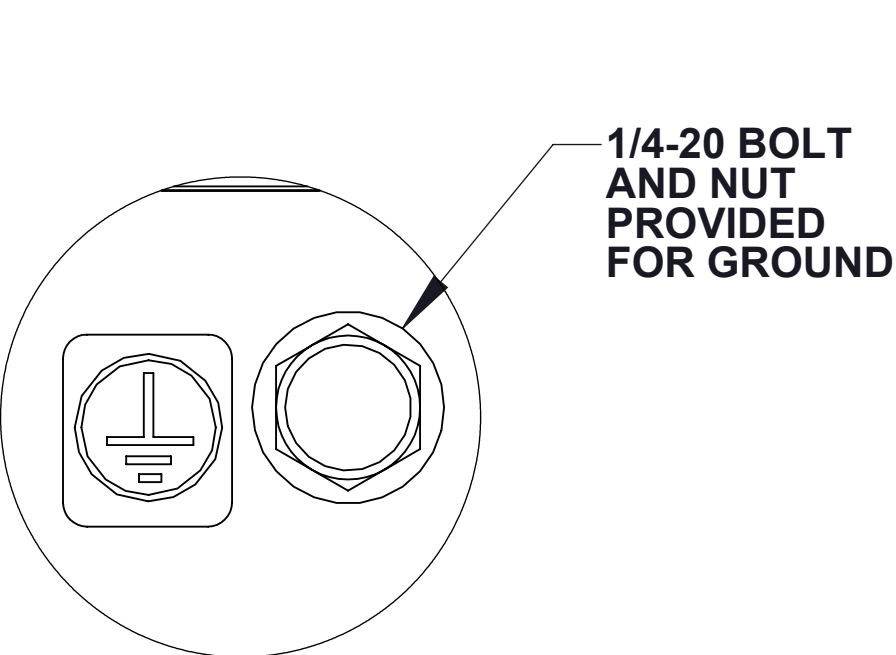


CUSTOMER CONNECTION
DETAIL VIEW
(INPUT/OUTPUT)

CUSTOMER CONNECTION
THERMAL DETAIL



DETAIL A
(INPUT/OUTPUT CONNECTION)
(6 PLACES)



DETAIL B
(GROUND CONNECTION)
(2 PLACES)

NOTES:

1. FILTER REQUIRES MTE P/N: RESPANEL-013 (QTY. 1)
2. WIRE RANGE: 4-18 AWG.
3. TERMINAL SCREW TIGHTENING TORQUE: 16 IN/LBS, MAX.

THE COMPONENT, PART OR ASSEMBLY DESCRIBED IN THIS DOCUMENT MUST COMPLY WITH THE EU(EUROPEAN UNION) DIRECTIVE RoHS2		MATERIAL		CONFIDENTIAL AND PROPRIETARY INFORMATION THIS DOCUMENT CONTAINS CONFIDENTIAL AND PROPRIETARY INFORMATION OF MTE CORPORATION AND MAY NOT BE USED, COPIED OR DISCLOSED TO OTHERS EXCEPT WITH THE AUTHORIZED WRITTEN PERMISSION OF MTE CORPORATION	
CONTAINS <0.1% OF ANY SVHC BY WEIGHT PER REACH REGULATION				DESCRIPTION	
UNLESS OTHERWISE SPECIFIED DIMENSIONS ARE IN INCHES [MM] TOLERANCES ARE: ANGLES: ± 1 ° 1 PLACE .X: ± .1 [2.5] 2 PLACE .XX: ± .03 [0.76] 3 PLACE .XXX: ± .010 [0.254]		DRAWN MM 07/31/14		DATE 07/31/14	
		CHECKED RH 03/18/15		DATE 03/18/15	
		APPROVED RH 03/18/15		DATE 03/18/15	
		SCALE 1:2		REV 02	
		DWG No. CD DVSP0365E		SHEET 1 OF 1	

MTE
AN BL POWER ELECTRONICS COMPANY

N83 W13330 Leon Road
Menomonee Falls, WI 53051 USA
800.455-4683
262.253-8200

DV SENTRY 365A 380-600V
FILTER, OPEN PANEL