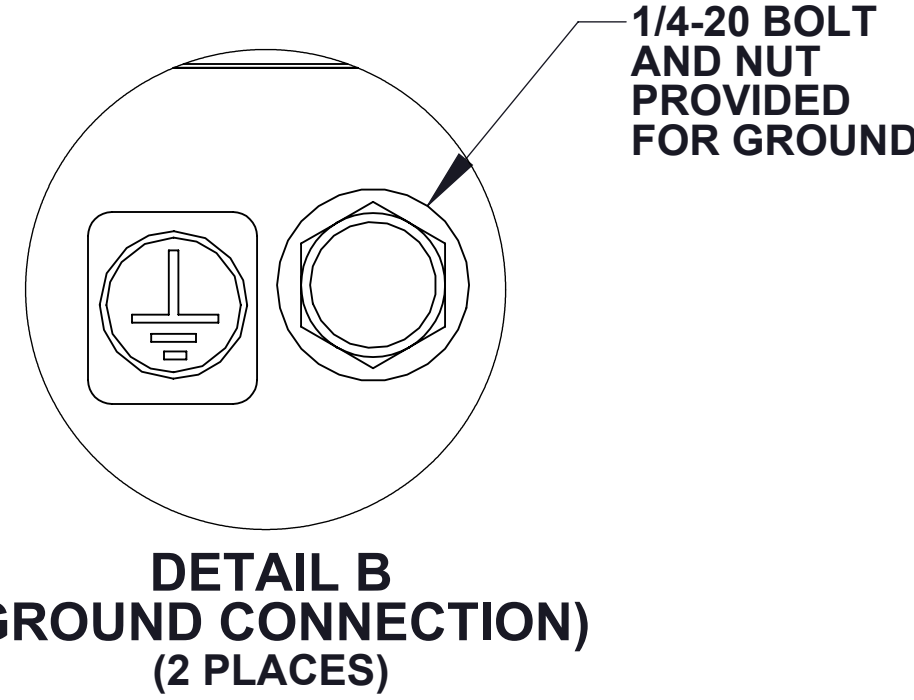
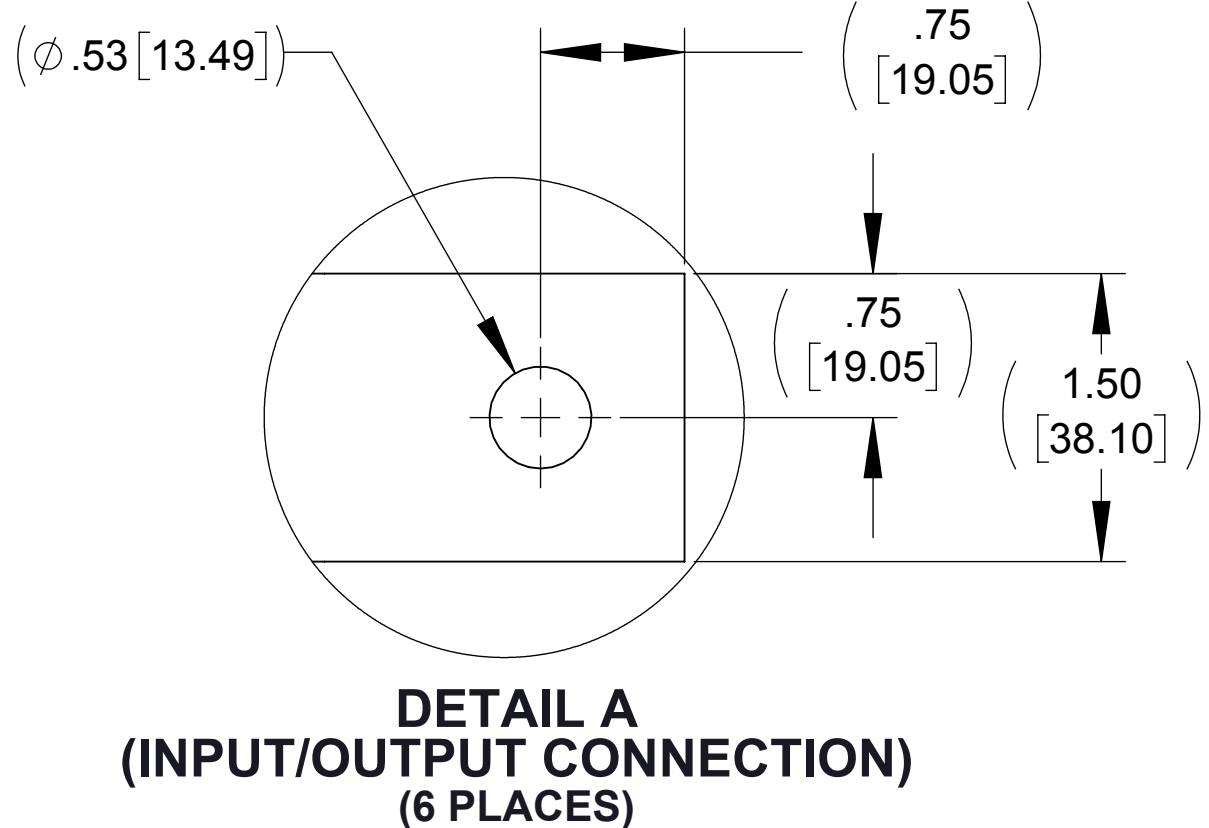
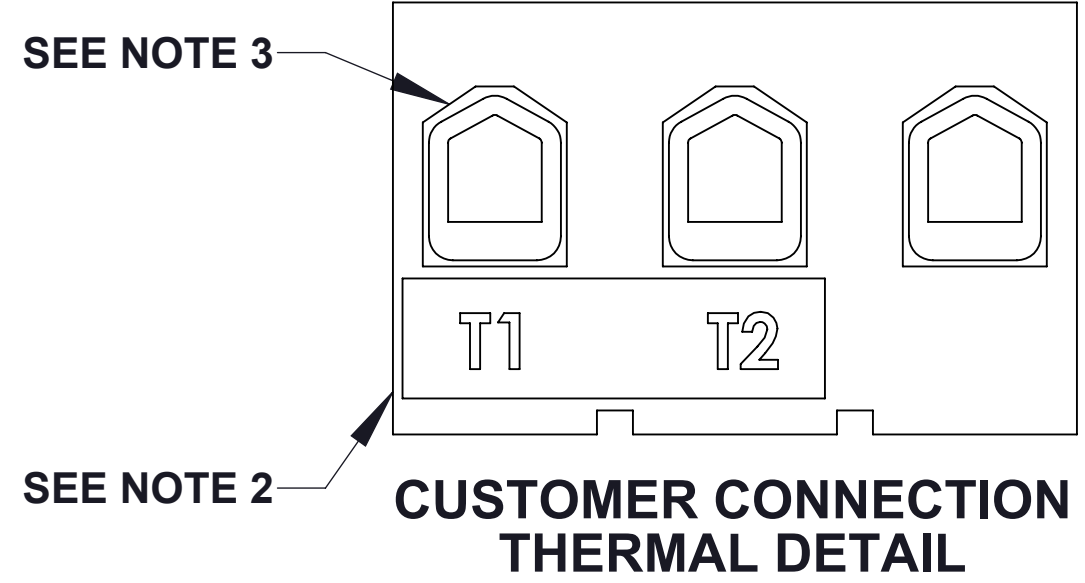
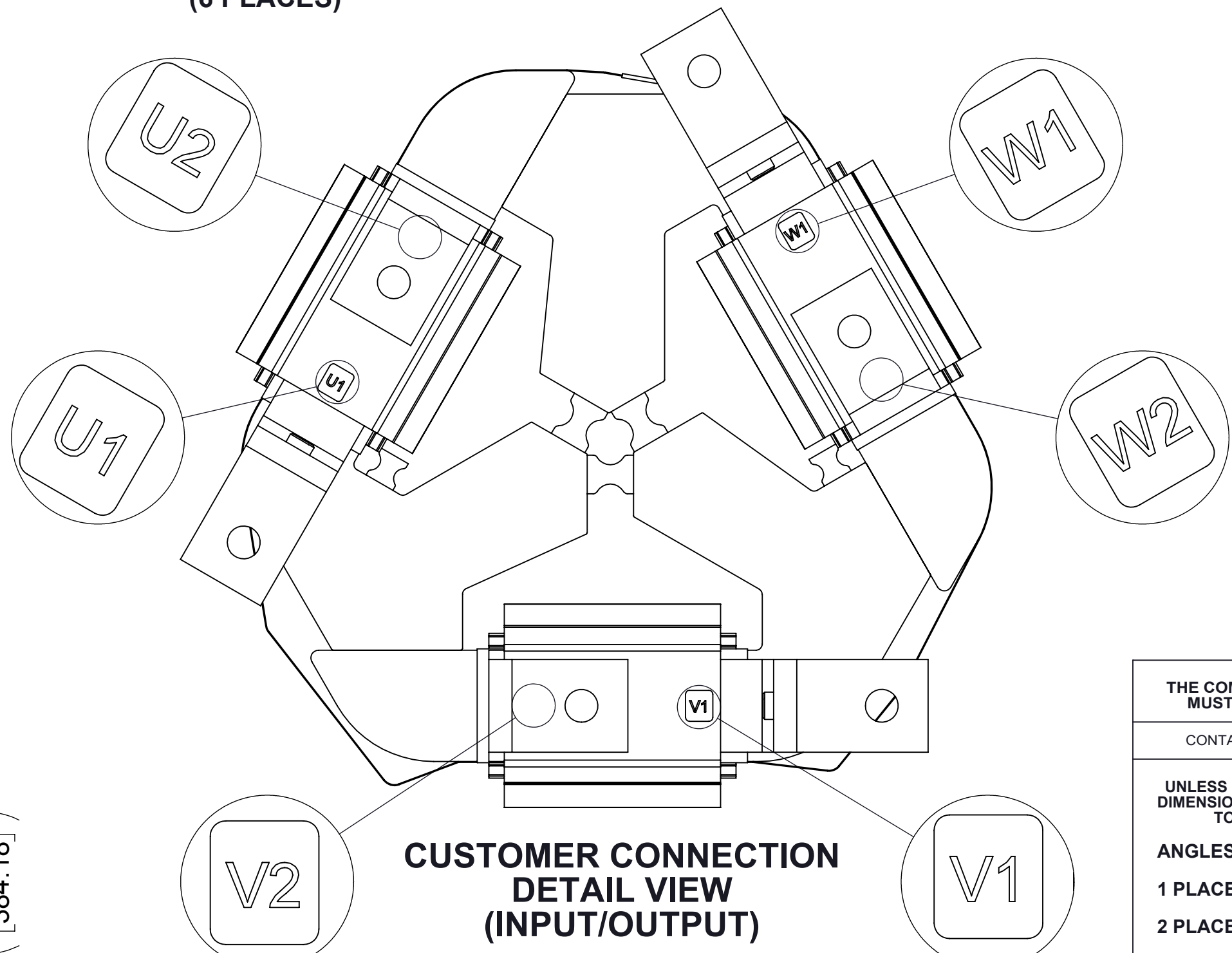
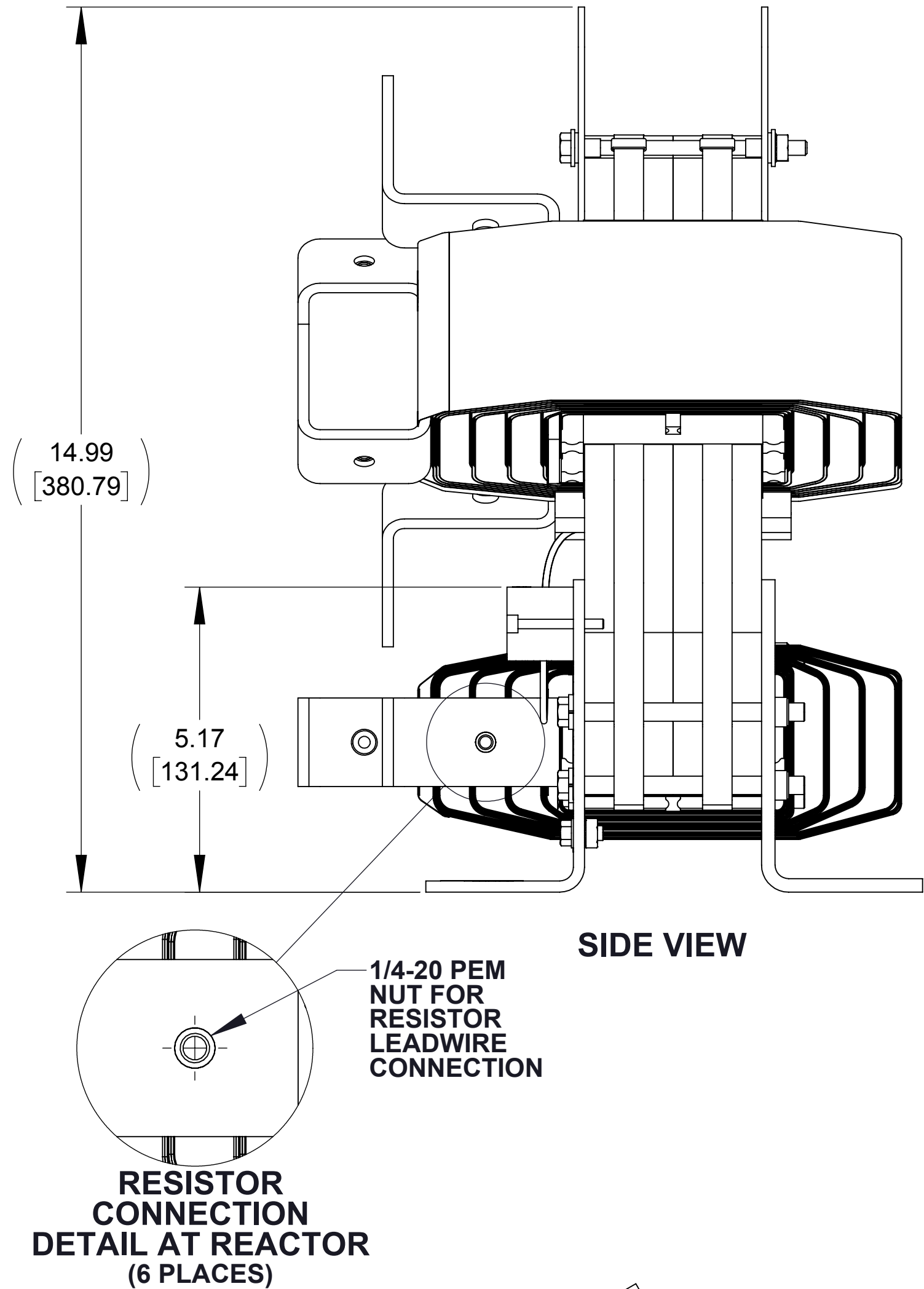
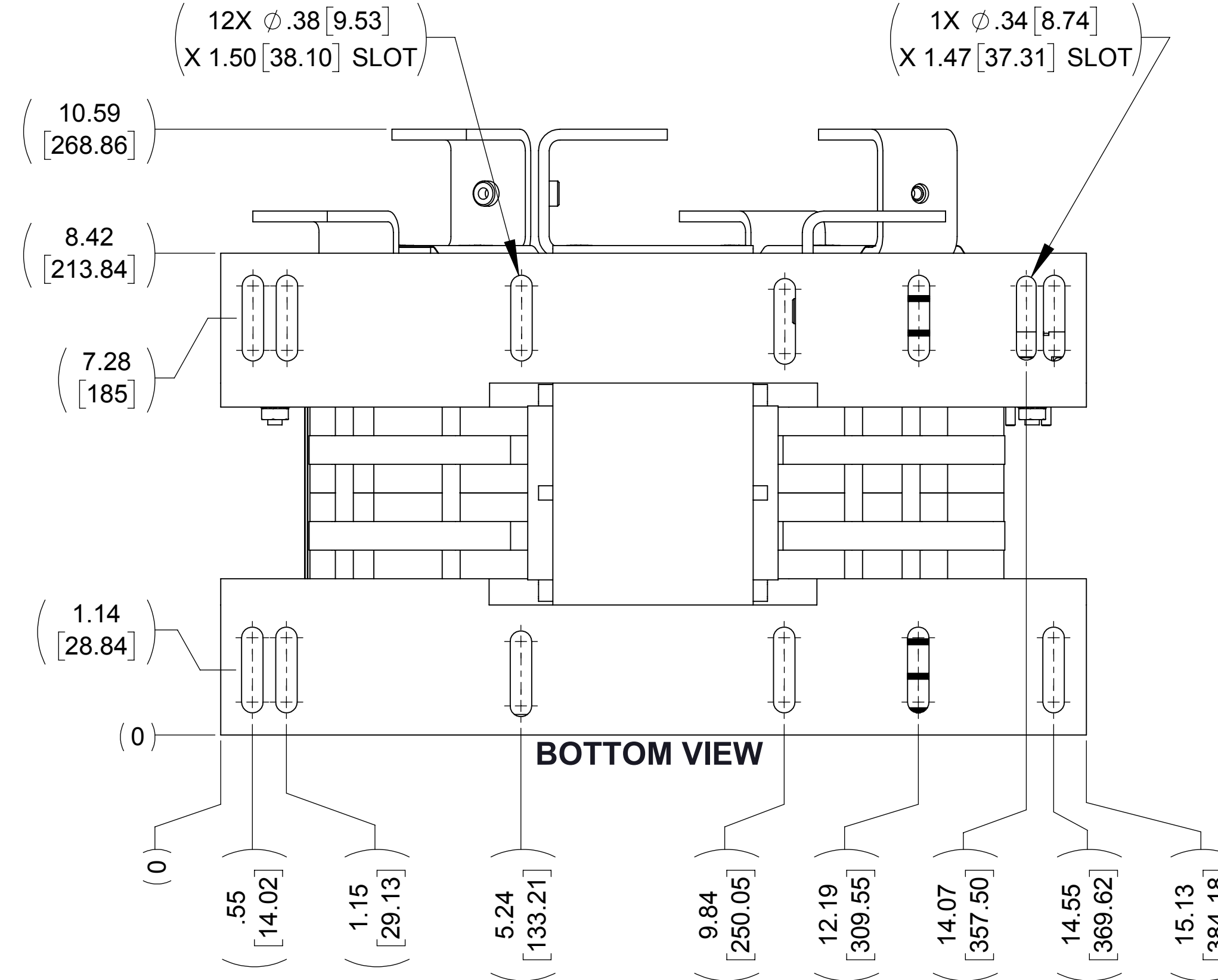
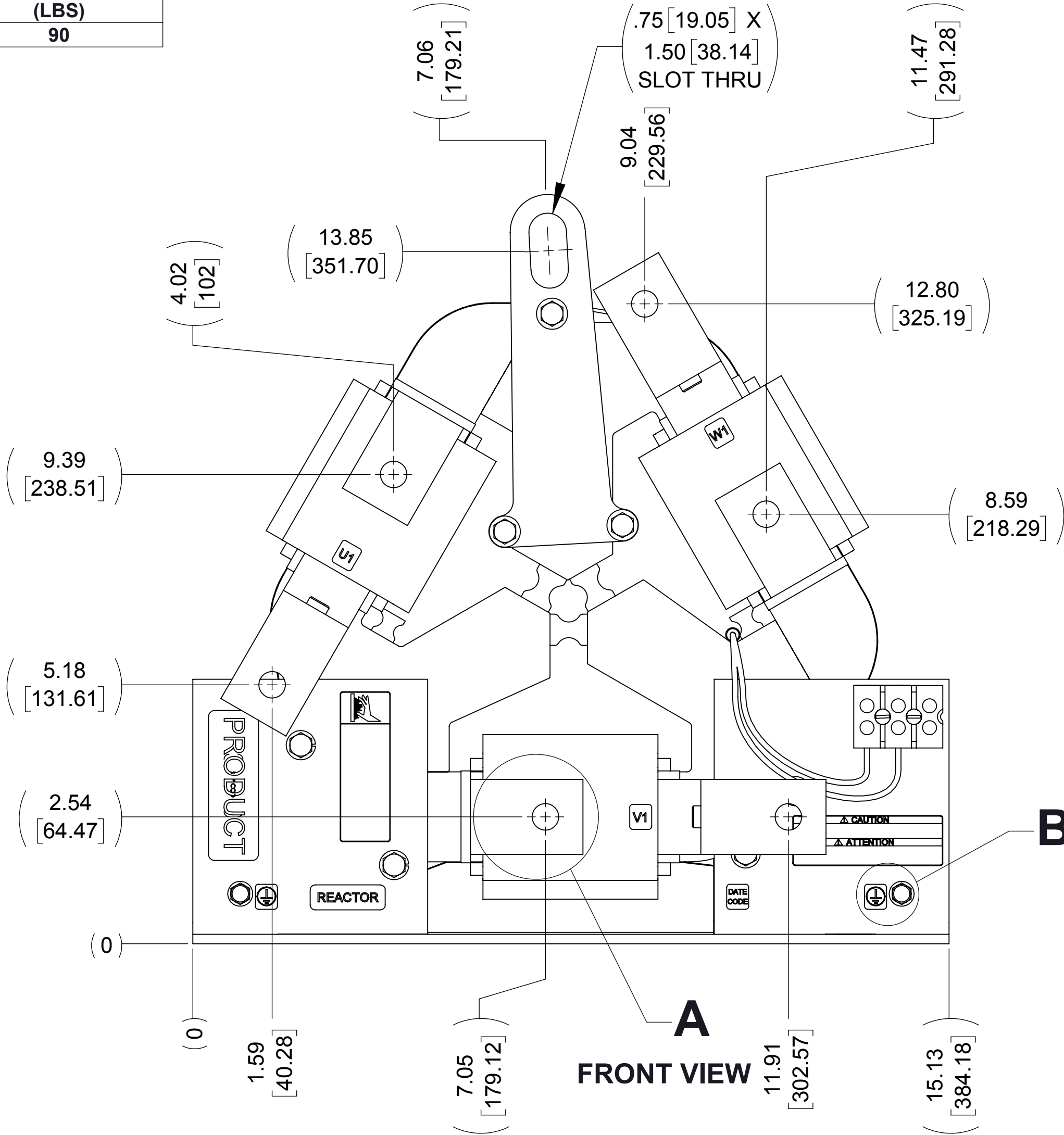


APPROX WEIGHT
(LBS)
90

ECO No	DESCRIPTION	REV BY	DATE
M9495	DIM 10.79 WAS 10.30 SHOWED BANDING AROUND BOLTS	RAH	03/17/15



- NOTES:
1. FILTER REQUIRES MTE P/N: RESPANEL-013 (QTY. 1)
 2. WIRE RANGE: 4-18 AWG.
 3. TERMINAL SCREW TIGHTENING TORQUE: 16 IN/LBS, MAX.

THE COMPONENT, PART OR ASSEMBLY DESCRIBED IN THIS DOCUMENT MUST COMPLY WITH THE EU(EUROPEAN UNION) DIRECTIVE RoHS2		MATERIAL		CONFIDENTIAL AND PROPRIETARY INFORMATION THIS DOCUMENT CONTAINS CONFIDENTIAL AND PROPRIETARY INFORMATION OF MTE CORPORATION AND MAY NOT BE USED, COPIED OR DISCLOSED TO OTHERS EXCEPT WITH THE AUTHORIZED WRITTEN PERMISSION OF MTE CORPORATION	
CONTAINS <0.1% OF ANY SVHC BY WEIGHT PER REACH REGULATION				DESCRIPTION	
UNLESS OTHERWISE SPECIFIED DIMENSIONS ARE IN INCHES [MM] TOLERANCES ARE: ANGLES: ± 1 ° 1 PLACE .XX: ± .1 [2.5] 2 PLACE .XX: ± .03 [0.76] 3 PLACE .XXX: ± .010 [0.254]		DRAWN MM 07/31/14		DV SENTRY 250A 380-600V FILTER, OPEN PANEL	
		CHECKED RH 03/18/15		DATE 03/18/15	
		APPROVED RH 03/18/15		DATE 03/18/15	
		SCALE 1:2		REV 03	
				SHEET 1 OF 1	