

APPROX. WEIGHT  
(LBS)  
5

ECO No	DESCRIPTION	REV BY	DATE
M11654	REFLECT CHANGES ON PANEL-372	KV	03/11/19

D

D

C

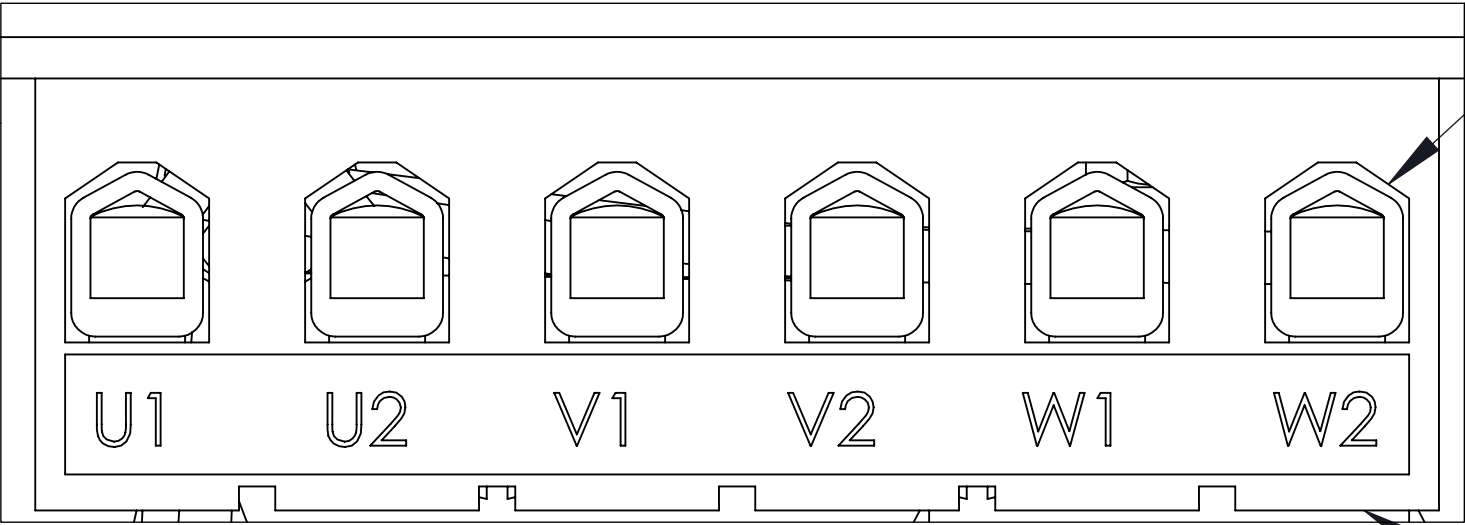
C

B

B

A

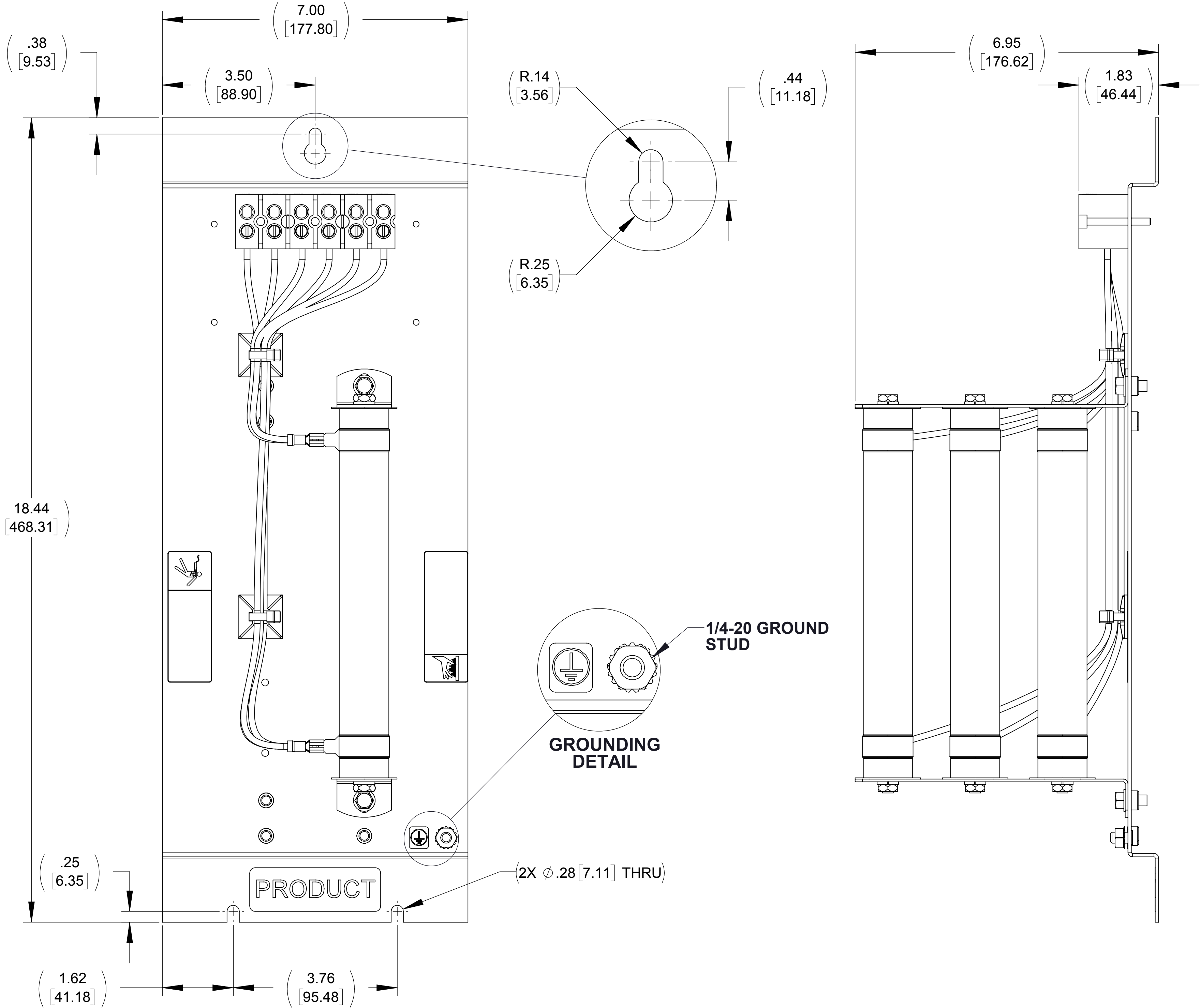
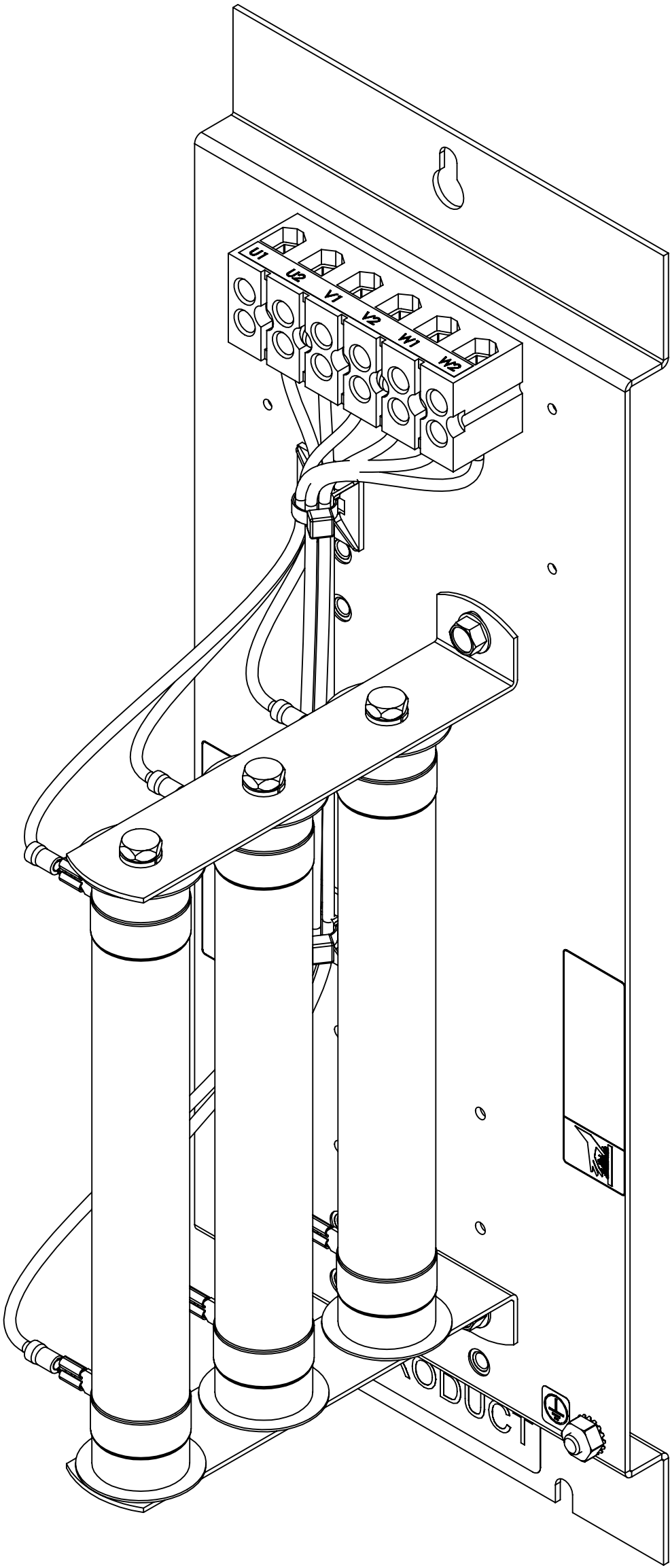
A



CUSTOMER CONNECTION  
DETAIL AT TERMINAL BLOCK


SEE NOTE 2

SEE NOTE 1



NOTES:

1. TERMINAL SCREW TIGHTENING TORQUE: 16 IN/LBS
2. WIRE RANGE: 4 - 18 AWG

THE COMPONENT, PART OR ASSEMBLY DESCRIBED IN THIS DOCUMENT MUST COMPLY WITH THE EU(EUROPEAN UNION) DIRECTIVE RoHS2		MATERIAL		CONFIDENTIAL AND PROPRIETARY INFORMATION THIS DOCUMENT CONTAINS CONFIDENTIAL AND PROPRIETARY INFORMATION OF MTE CORPORATION AND MAY NOT BE USED, COPIED OR DISCLOSED TO OTHERS EXCEPT WITH THE AUTHORIZED WRITTEN PERMISSION OF MTE CORPORATION		
CONTAINS <0.1% OF ANY SVHC BY WEIGHT PER REACH REGULATION				DESCRIPTION		
<div>UNLESS OTHERWISE SPECIFIED DIMENSIONS ARE IN INCHES [MM] TOLERANCES ARE:</div> <div>ANGLES: ± 1 °</div> <div>1 PLACE .X: ± .1 [2.5]</div> <div>2 PLACE .XX: ± .03 [0.76]</div> <div>3 PLACE .XXX: ± .010 [0.254]</div>		<div></div> <div>N83 W13330 Leon Road Menomonee Falls, WI 53051 USA 800.455-4683 262.253.8200</div>		RESISTOR ASSEMBLY 25 OHM, 300 WATTS DVS 130A - 200A		
		DRAWN	DATE	SIZE	DWG No.	REV
		MM	07/16/14	D		01
		CHECKED	DATE			
		KV	03/11/19			
		APPROVED	DATE			
		TL	03/21/19	SCALE	2:3	SHEET 1 OF 1