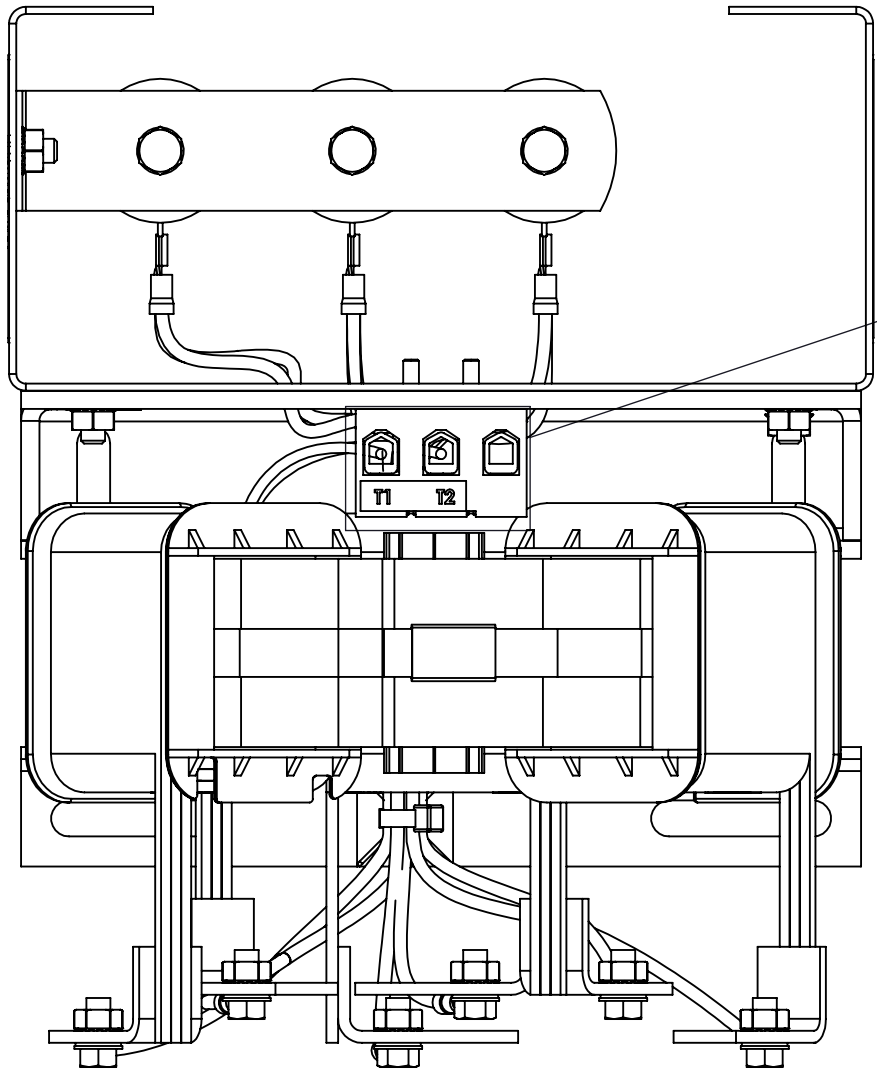
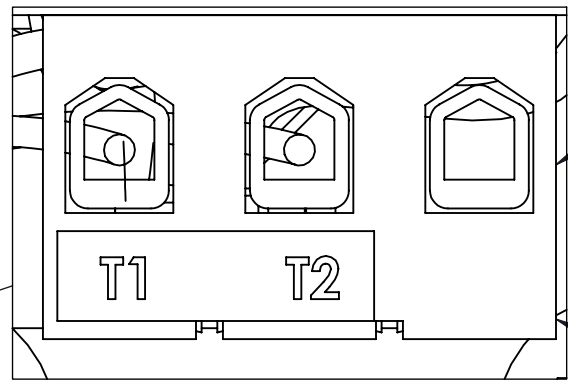


APPROX. WEIGHT (LBS)
32

ECO No	DESCRIPTION	REV BY	DATE
M9345	LABEL GRAPHICS UPDATED	JT	10/21/14



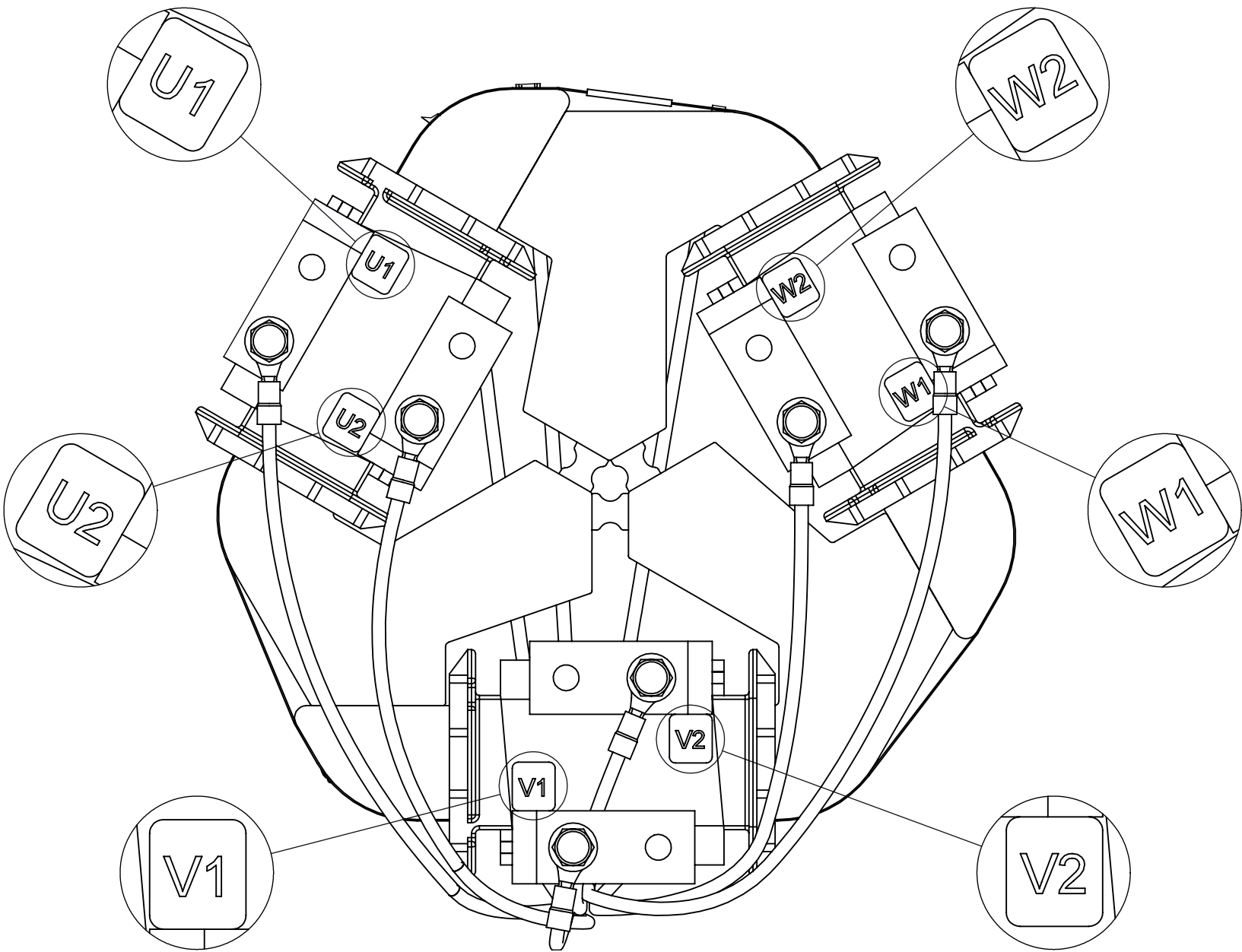
TOP VIEW



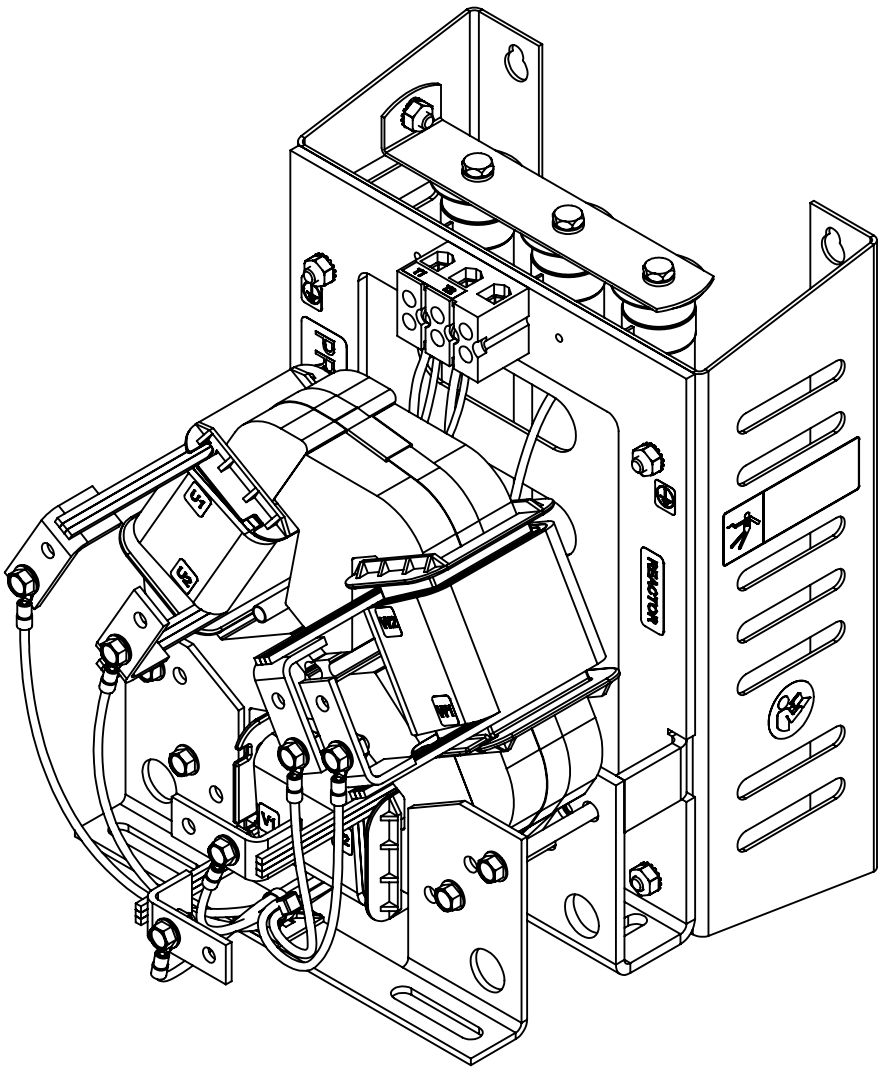
CUSTOMER CONNECTION
THERMAL DETAIL

SEE NOTE 1

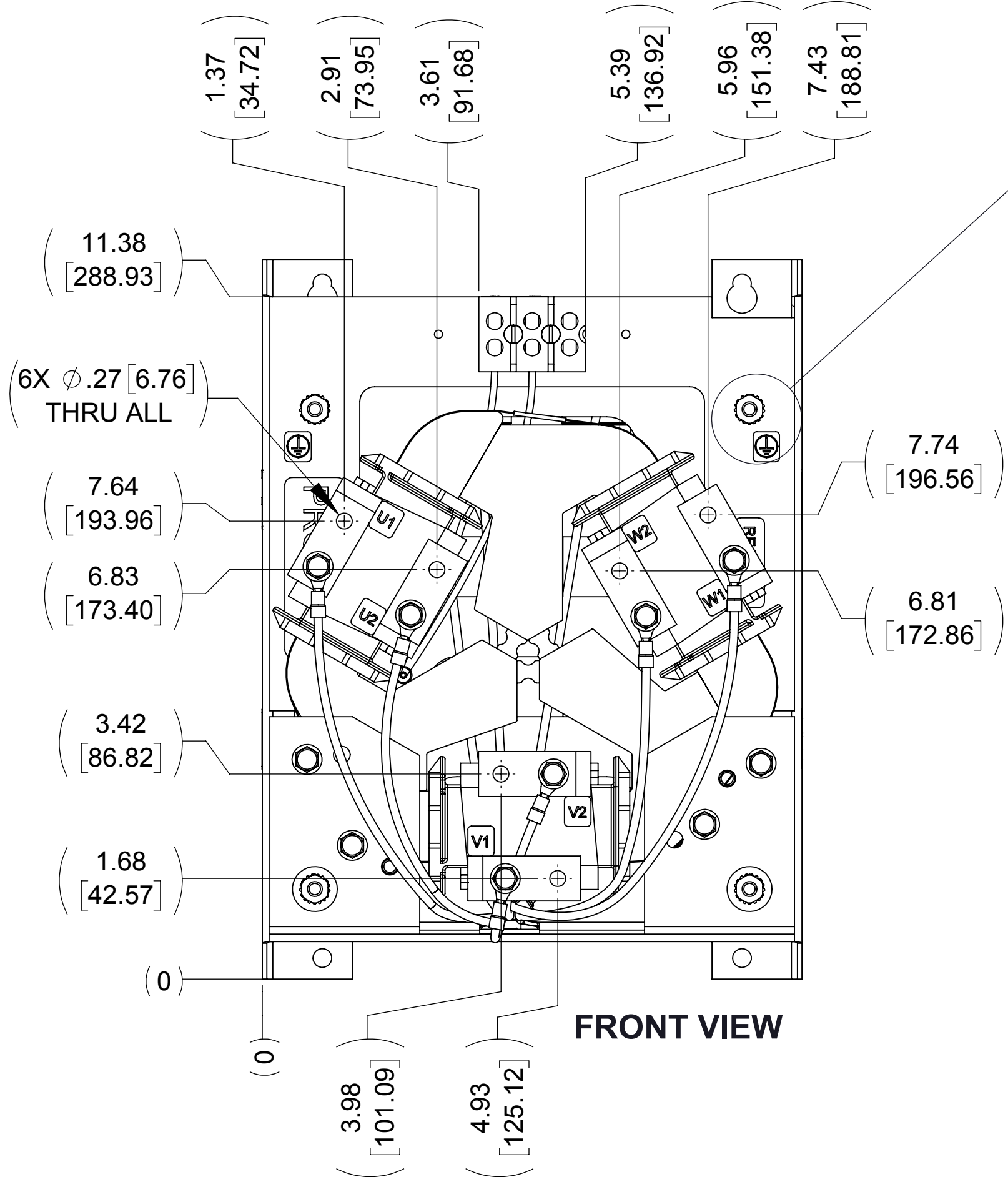
SEE NOTE 2



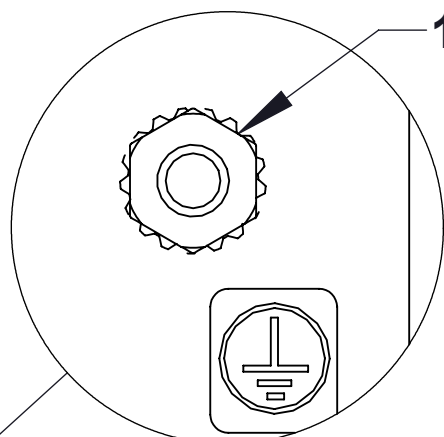
CUSTOMER CONNECTION
DETAIL VIEW



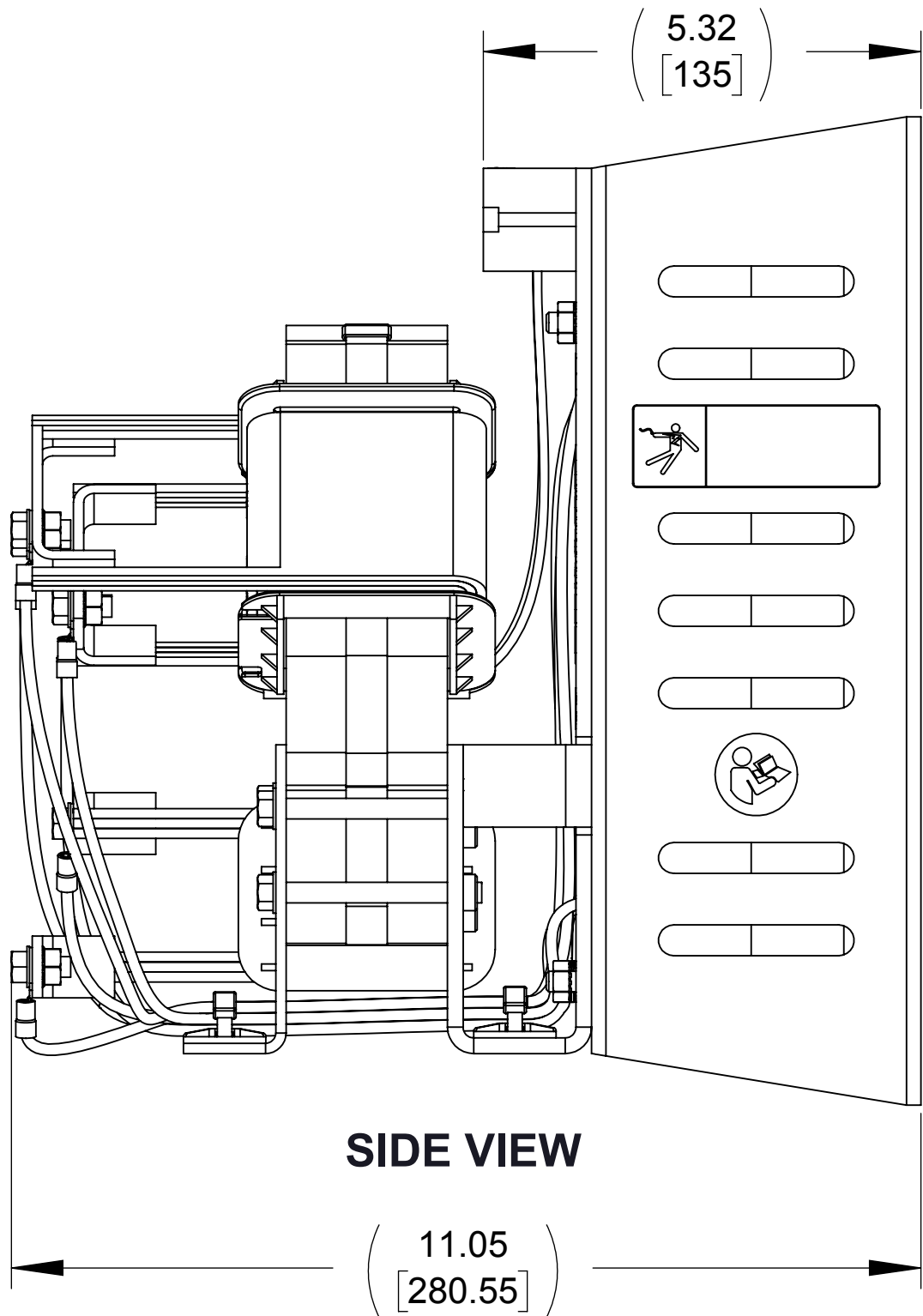
REAR VIEW



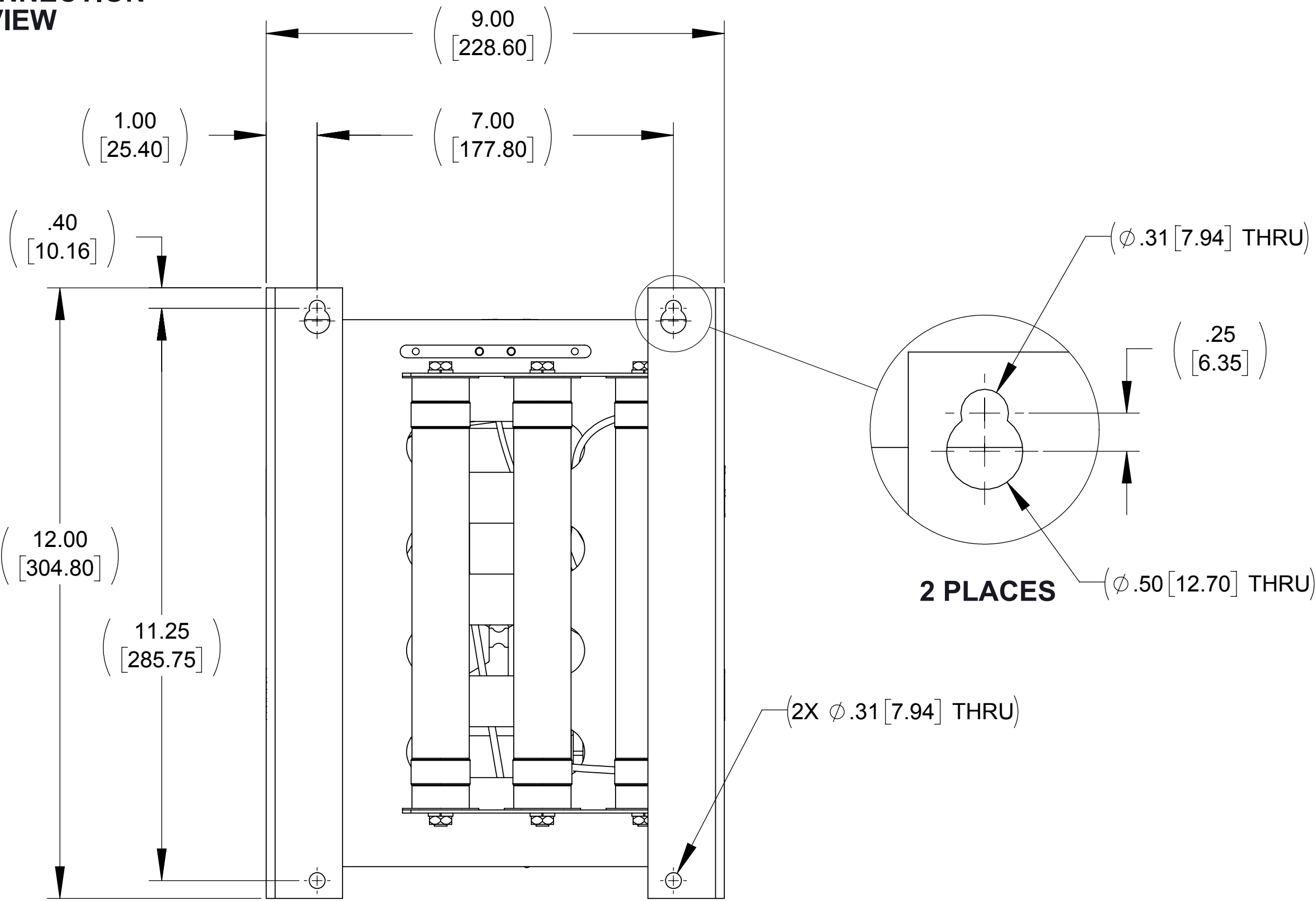
FRONT VIEW



CUSTOMER
GROUND
CONNECTION
DETAIL
(2 PLACES)




SIDE VIEW



NOTES:

1. WIRE RANGE: 4 - 18 AWG
2. TERMINAL SCREW TIGHTENING TORQUE: 16 IN/LBS

THE COMPONENT, PART OR ASSEMBLY DESCRIBED IN THIS DOCUMENT MUST COMPLY WITH THE EU(EUROPEAN UNION) DIRECTIVE RoHS2		MATERIAL		CONFIDENTIAL AND PROPRIETARY INFORMATION THIS DOCUMENT CONTAINS CONFIDENTIAL AND PROPRIETARY INFORMATION OF MTE CORPORATION AND MAY NOT BE USED, COPIED OR DISCLOSED TO OTHERS EXCEPT WITH THE AUTHORIZED WRITTEN PERMISSION OF MTE CORPORATION			
CONTAINS <0.1% OF ANY SVHC BY WEIGHT PER REACH REGULATION				DESCRIPTION			
UNLESS OTHERWISE SPECIFIED DIMENSIONS ARE IN INCHES [MM] TOLERANCES ARE: ANGLES: ± 1 ° 1 PLACE .X: ± .1 [2.5] 2 PLACE .XX: ± .03 [0.76] 3 PLACE .XXX: ± .010 [0.254]		 N83 W13330 Leon Road Menomonee Falls, WI 53051 USA 800.455-4683 262.253-8200		DV SENTRY 80A, 380-600V FILTER, OPEN PANEL			
		DRAWN	DATE	SIZE	DWG No.	REV	
		MM	06/12/14				
		CHECKED	DATE				
		TM	10/22/14	D	CD DVSP0080E	01	
		APPROVED	DATE				
		TM	10/22/14	SCALE	1:2	SHEET 1 OF 1	