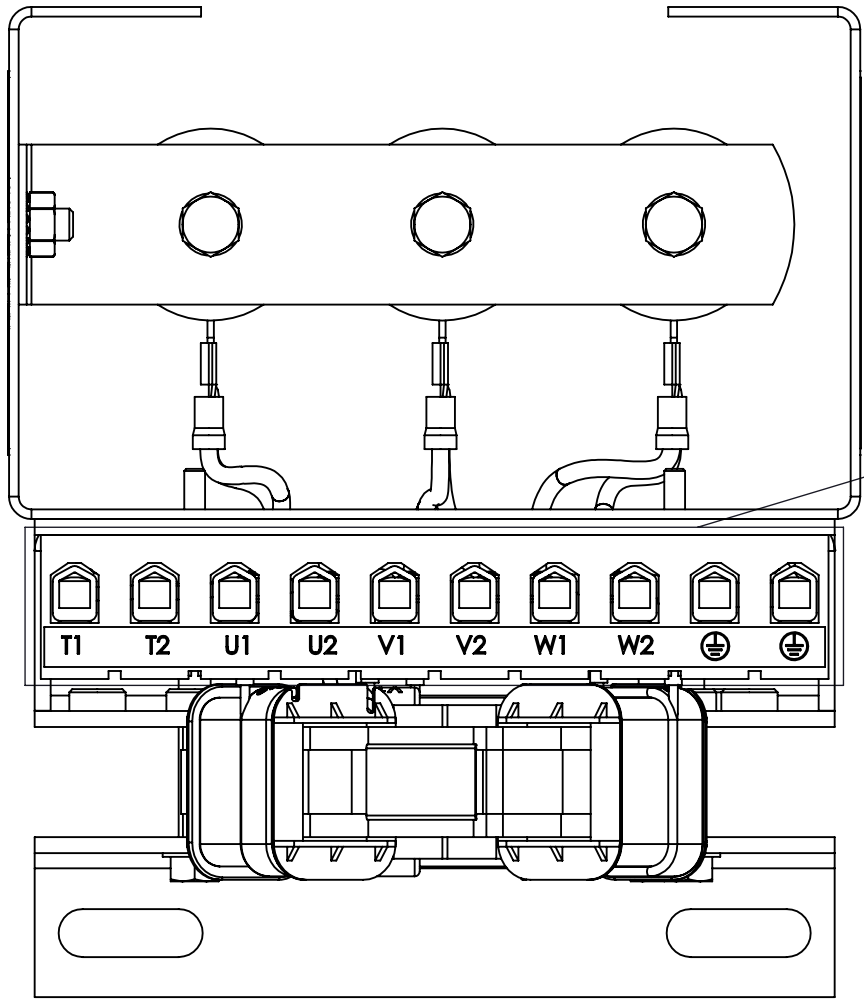
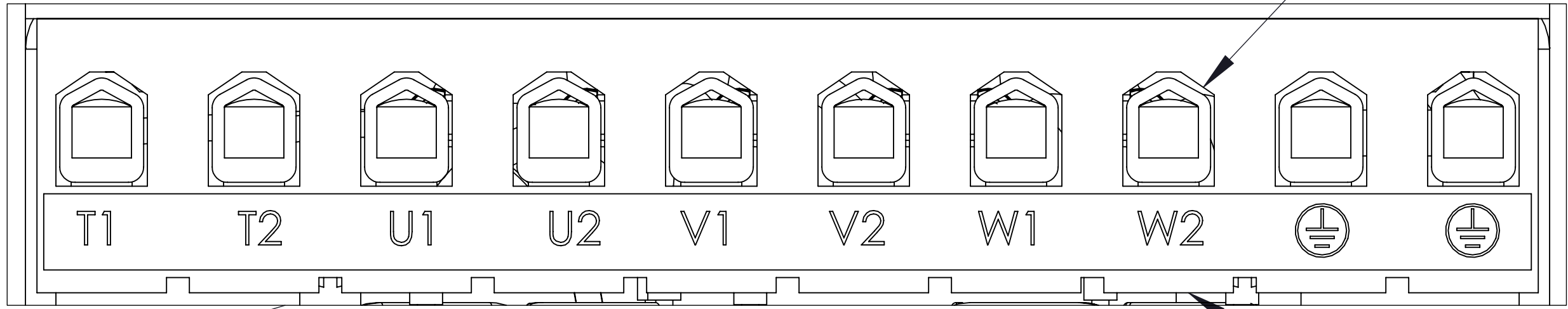


APPROX WEIGHT  
(LBS)  
7

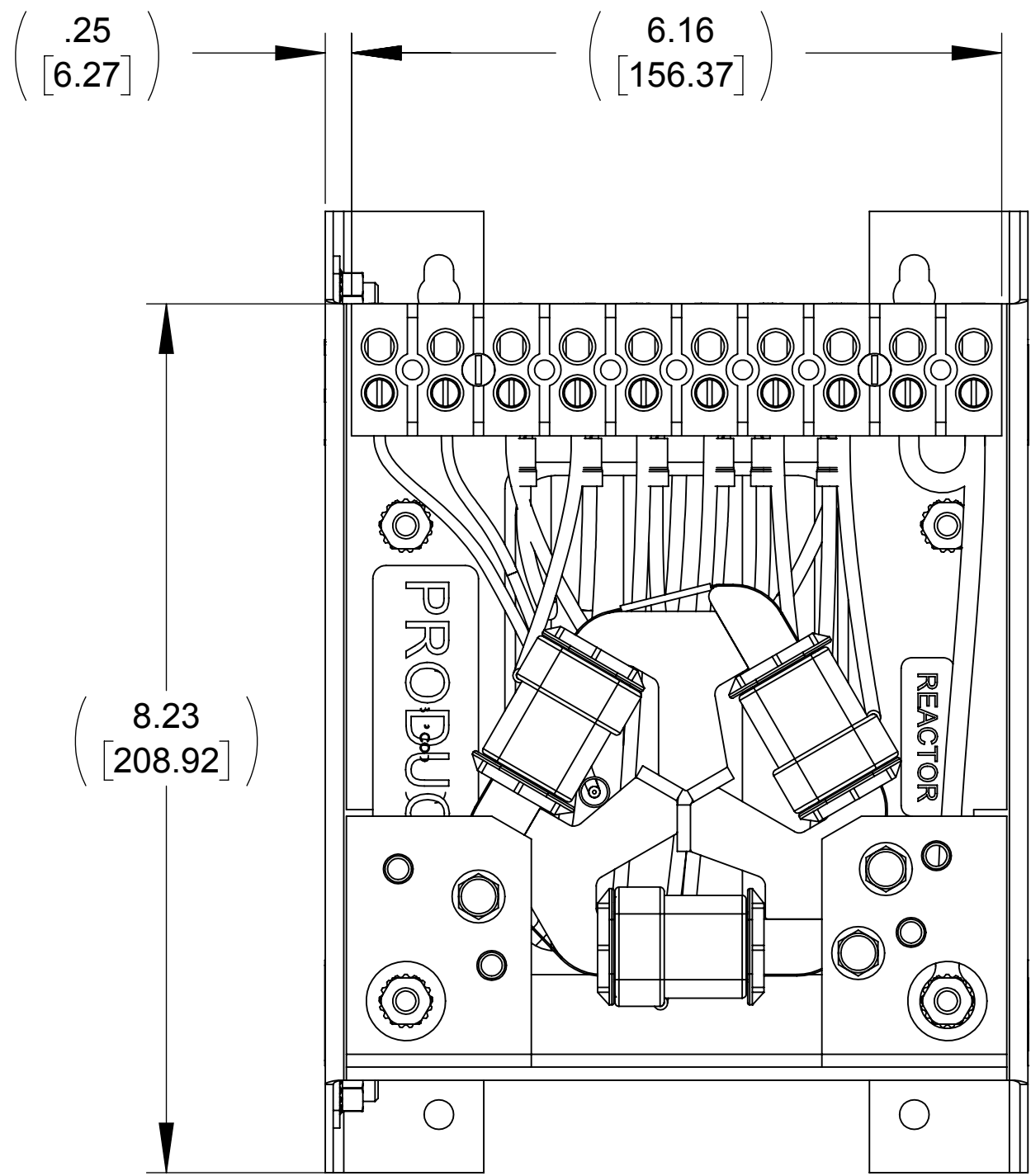
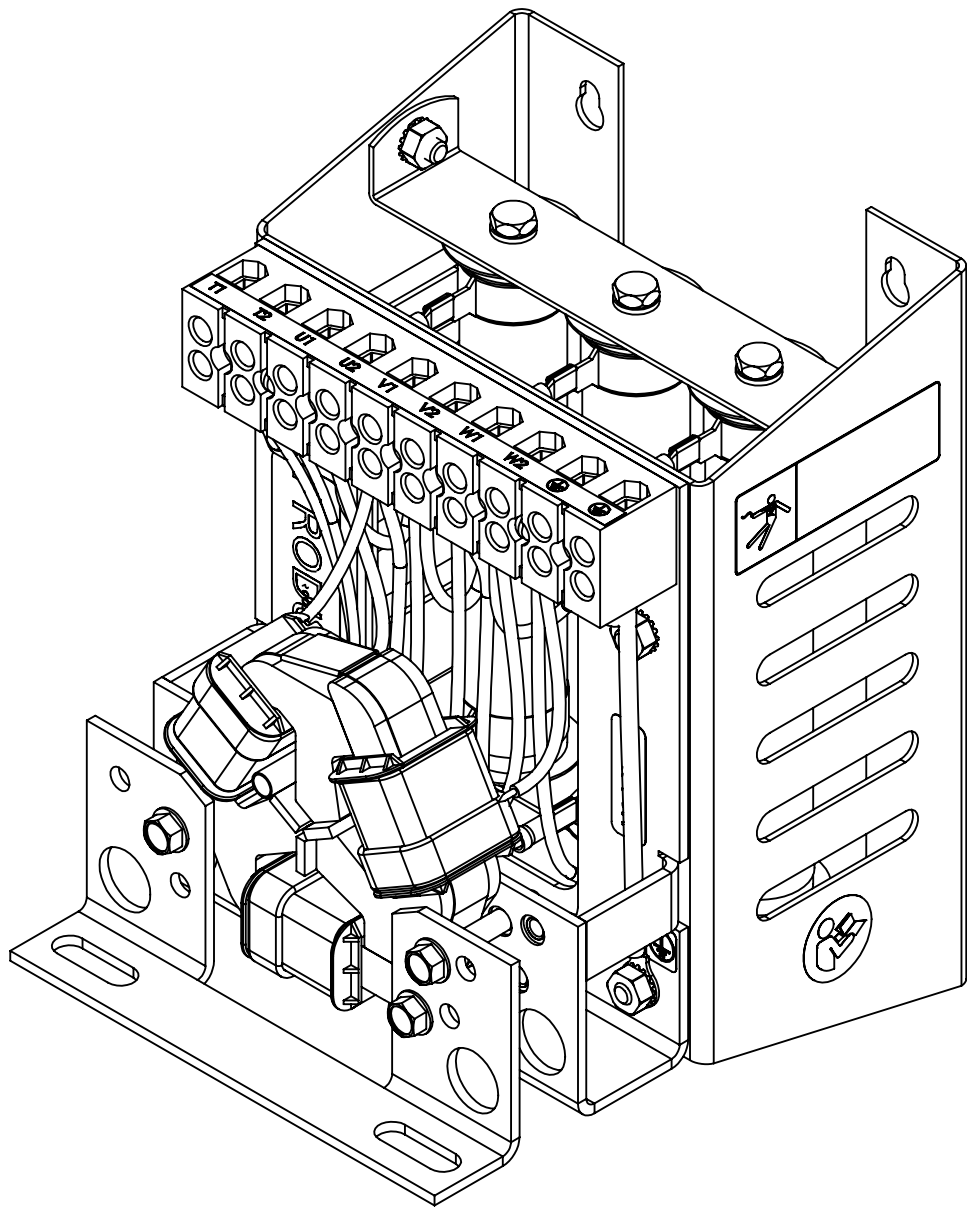
ECO No	DESCRIPTION	REV BY	DATE
M9354	LABEL GRAPHICS UPDATED	JT	10/27/14



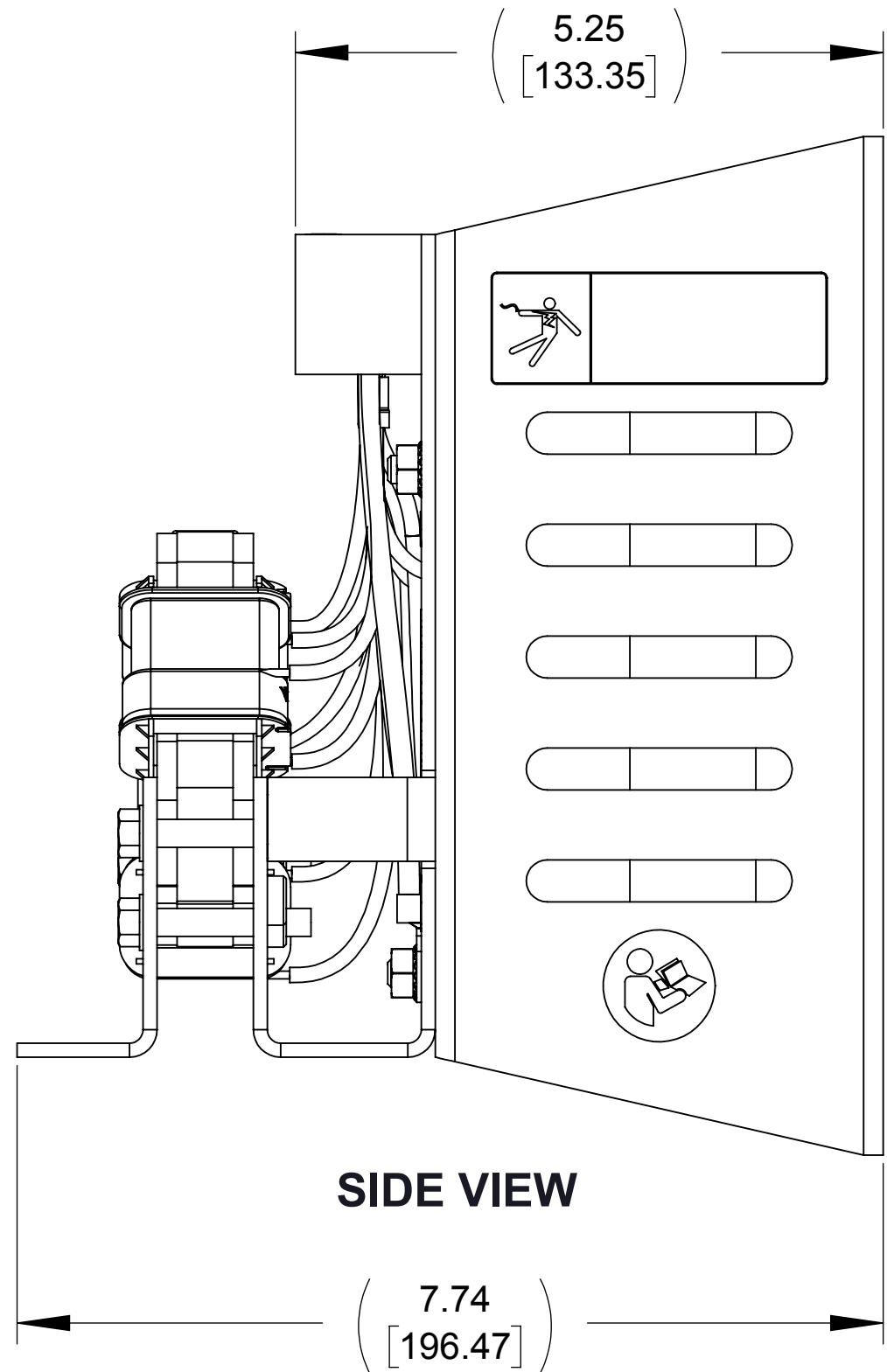
TOP VIEW



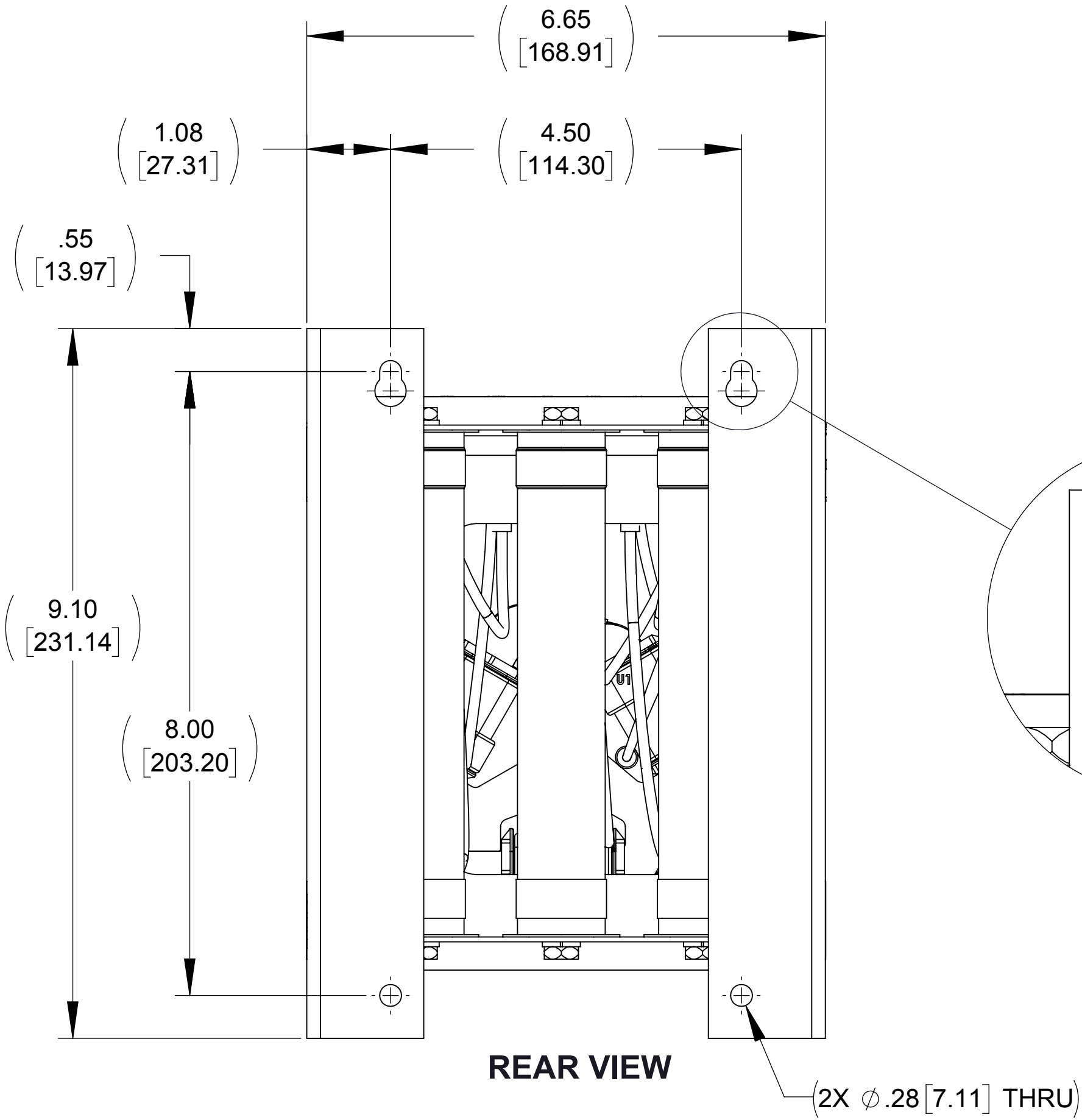
CUSTOMER CONNECTION  
DETAIL VIEW



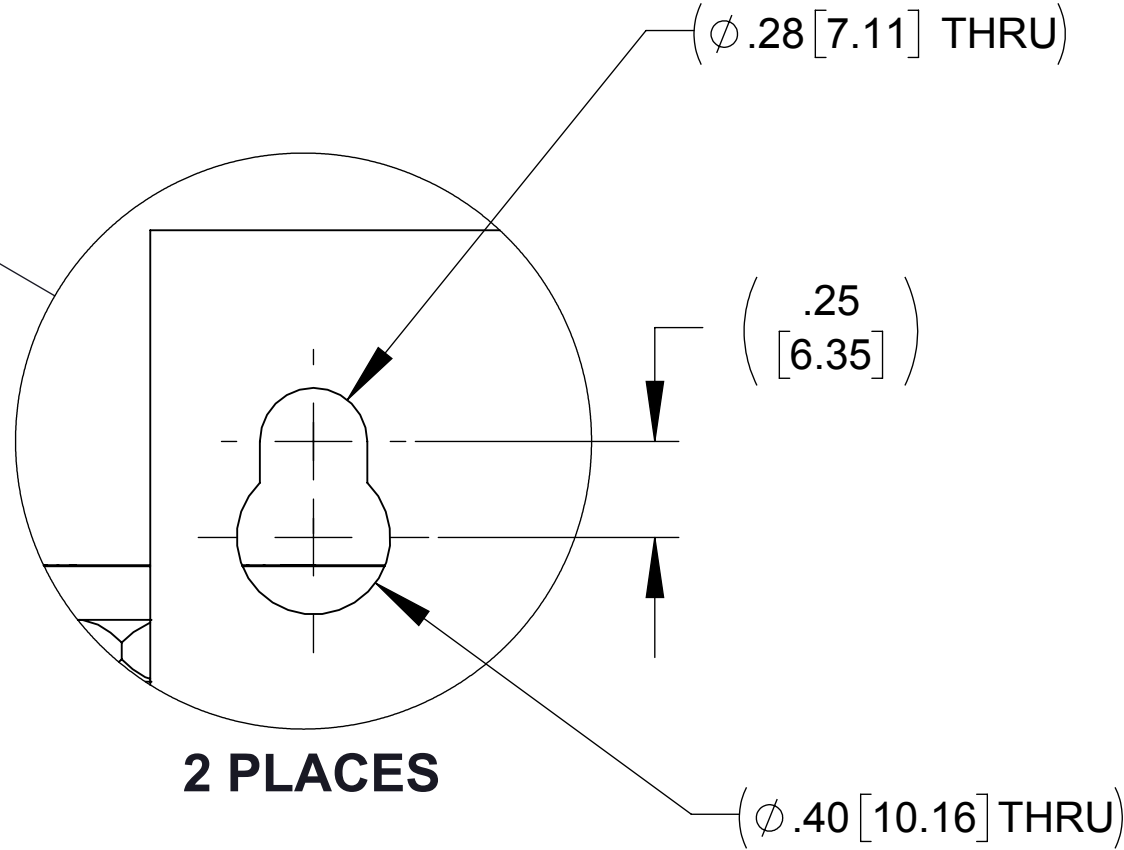
FRONT VIEW



SIDE VIEW




REAR VIEW



NOTES:

1. WIRE RANGE: 4 - 18 AWG
2. TERMINAL SCREW TIGHTENING TORQUE: 16 IN/LBS

THE COMPONENT, PART OR ASSEMBLY DESCRIBED IN THIS DOCUMENT MUST COMPLY WITH THE EU(EUROPEAN UNION) DIRECTIVE RoHS2		MATERIAL		CONFIDENTIAL AND PROPRIETARY INFORMATION THIS DOCUMENT CONTAINS CONFIDENTIAL AND PROPRIETARY INFORMATION OF MTE CORPORATION AND MAY NOT BE USED, COPIED OR DISCLOSED TO OTHERS EXCEPT WITH THE AUTHORIZED WRITTEN PERMISSION OF MTE CORPORATION			
CONTAINS <0.1% OF ANY SVHC BY WEIGHT PER REACH REGULATION				DESCRIPTION			
<div>UNLESS OTHERWISE SPECIFIED DIMENSIONS ARE IN INCHES [MM] TOLERANCES ARE:</div> <div>ANGLES: ± 1 °</div> <div>1 PLACE .X: ± .1 [2.5]</div> <div>2 PLACE .XX: ± .03 [0.76]</div> <div>3 PLACE .XXX: ± .010 [0.254]</div>	<div> <small>AN BL POWER ELECTRONICS COMPANY</small></div> <div>N83 W13330 Leon Road Menomonee Falls, WI 53051 USA 800.455-4683 262.253-8200</div>	DRAWN	DATE	DV SENTRY 7A 380-600V FILTER, OPEN PANEL			
		MM	07/21/14				
		CHECKED	DATE				
		TM	10/28/14				
		APPROVED	DATE	SIZE	DWG No.	REV	
		TM	10/28/14	D	CD DVSP0007E	01	
				SCALE	2:3	SHEET 1 OF 1	