

APPROX WEIGHT (LBS)
202

ECO No	DESCRIPTION	REV BY	DATE
M9495	DIM 1.64 WAS 1.99	RAH	03/17/15

D

C

B

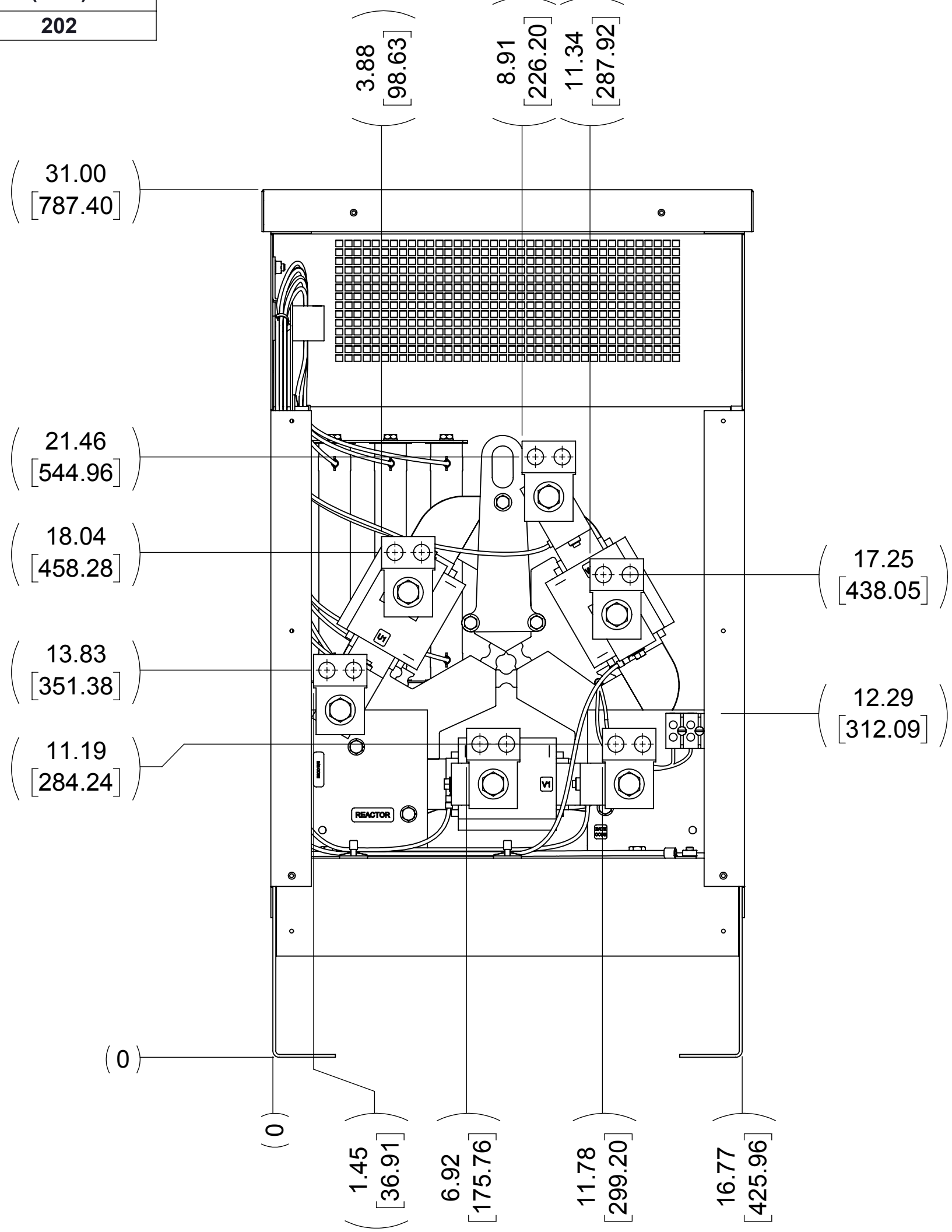
A

D

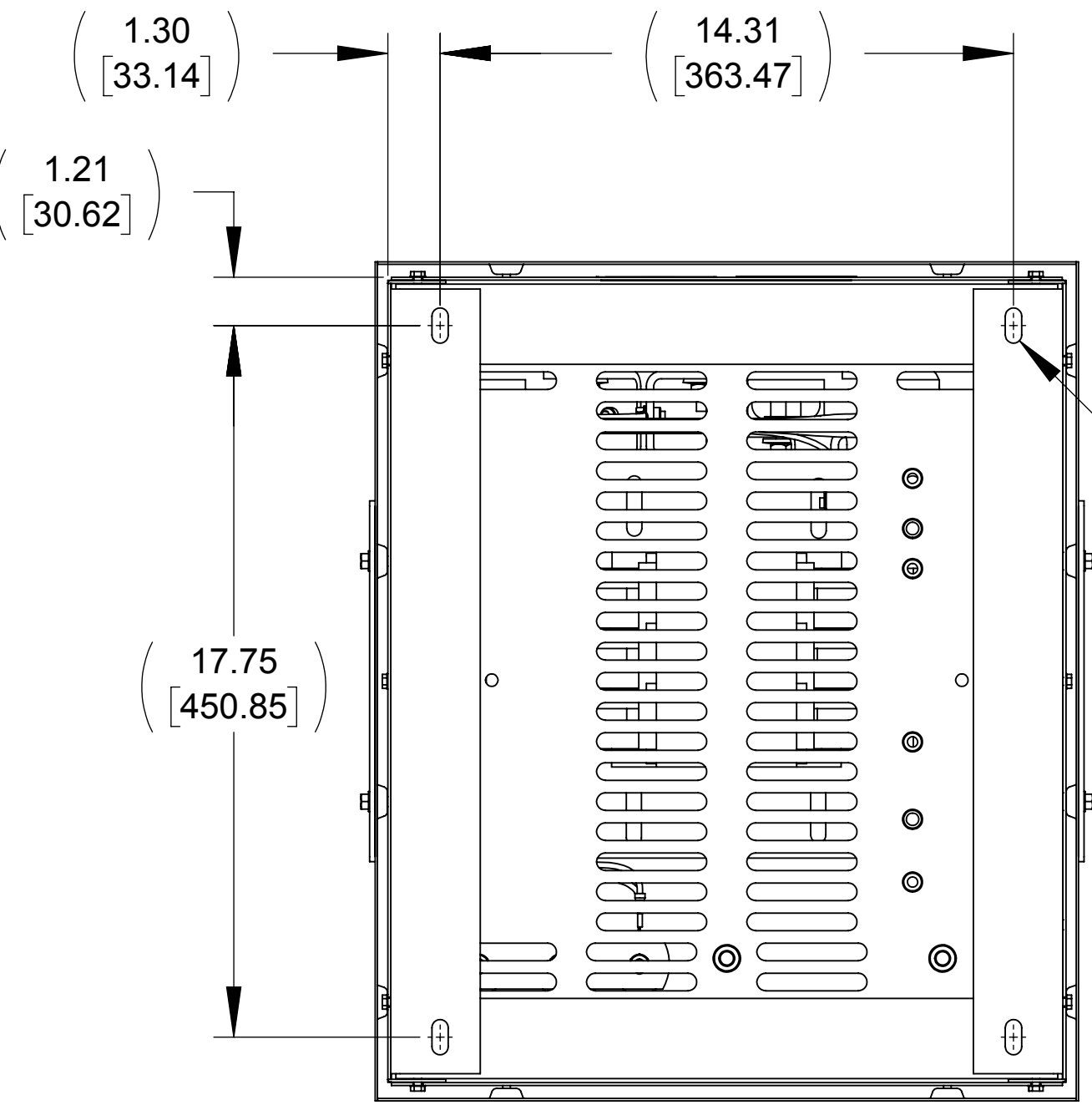
C

B

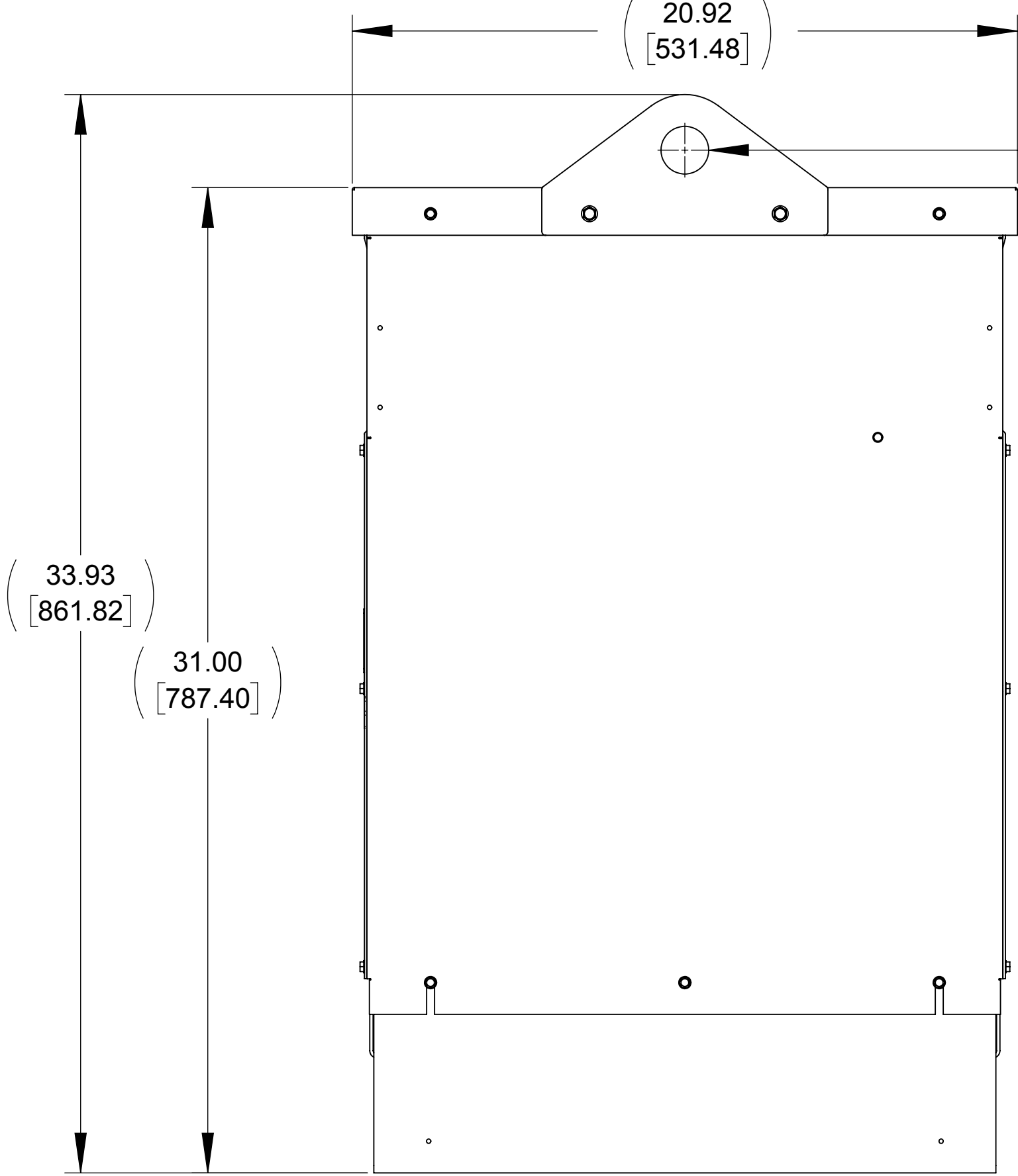
A



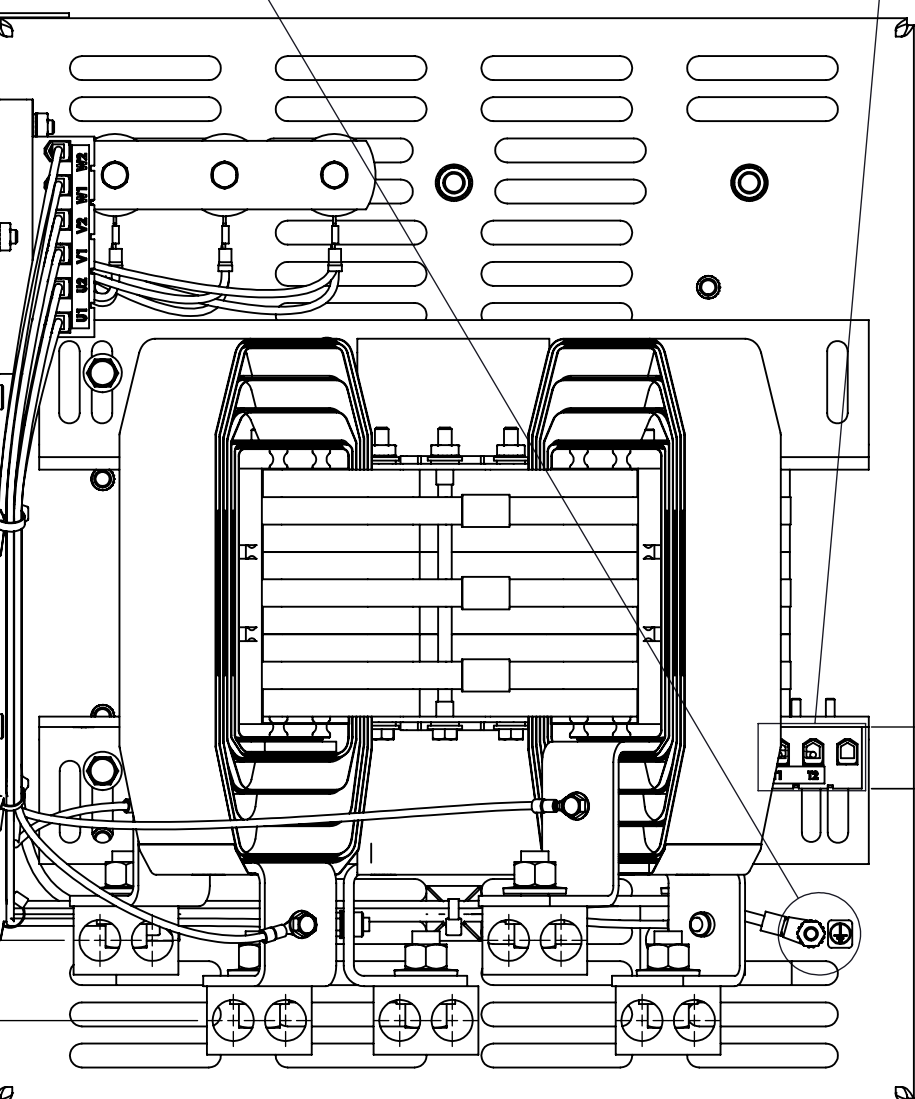
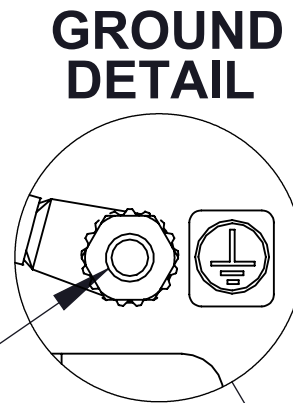
FRONT VIEW  
(PANEL REMOVED)



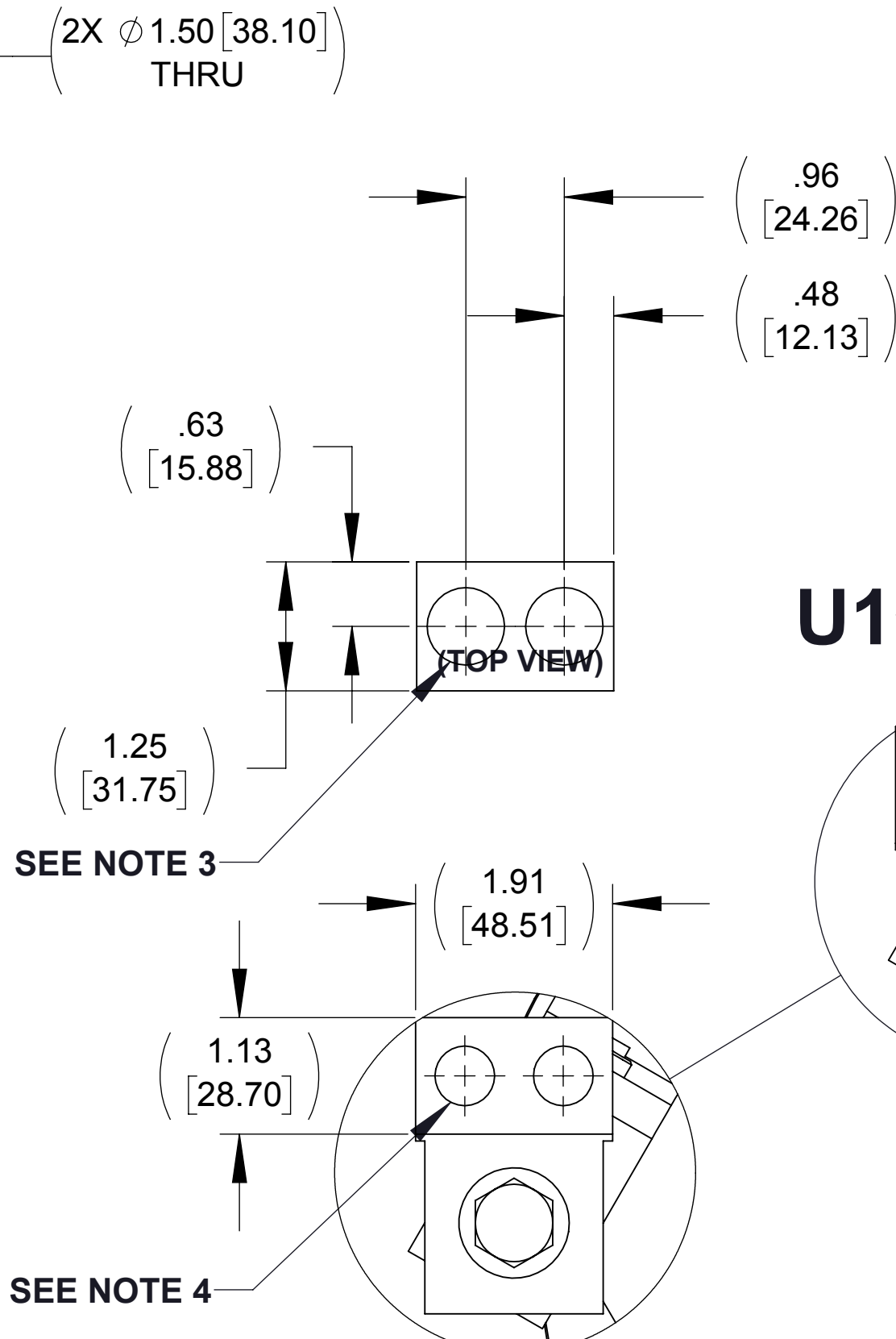
BOTTOM VIEW



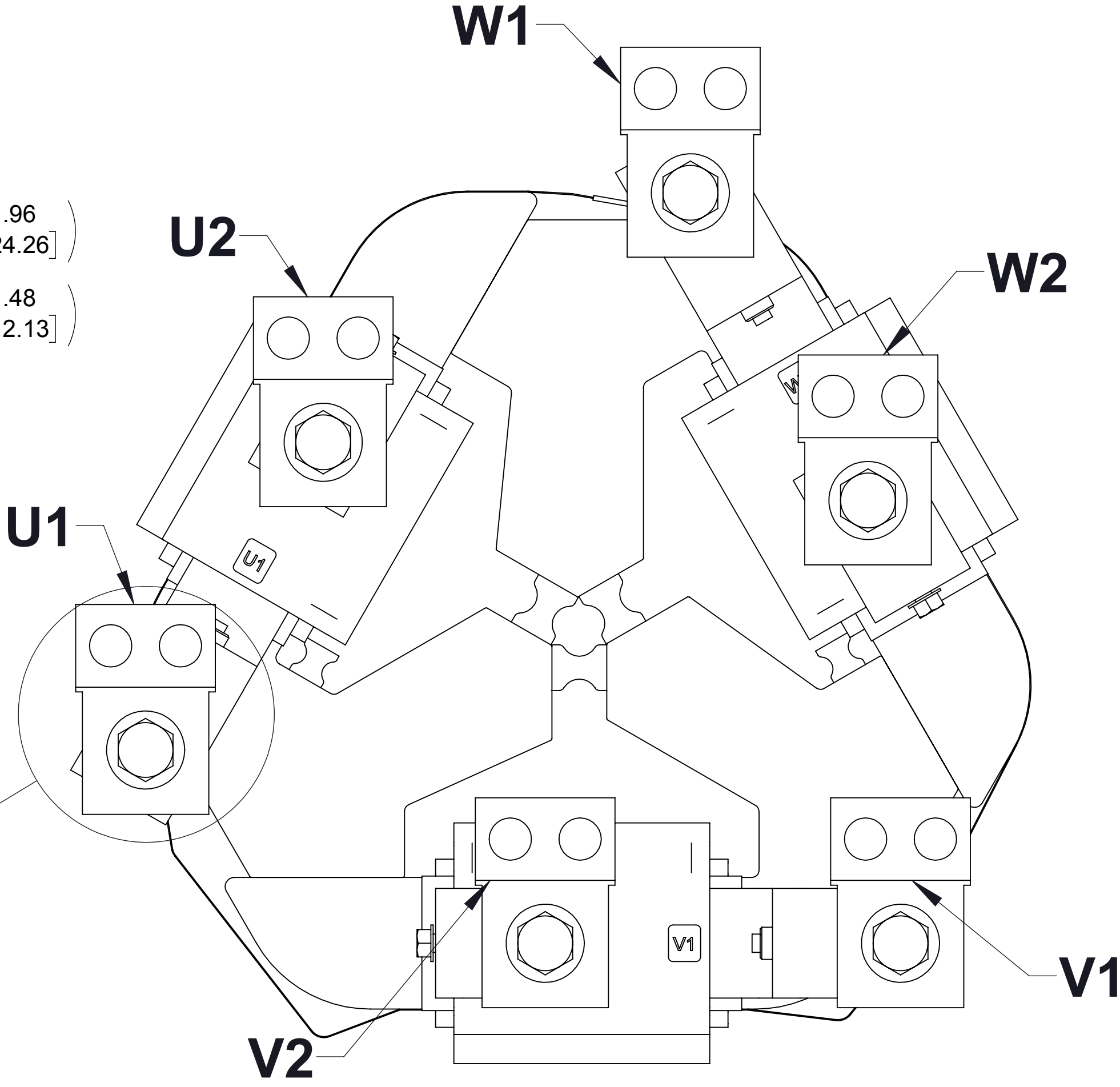
SIDE VIEW



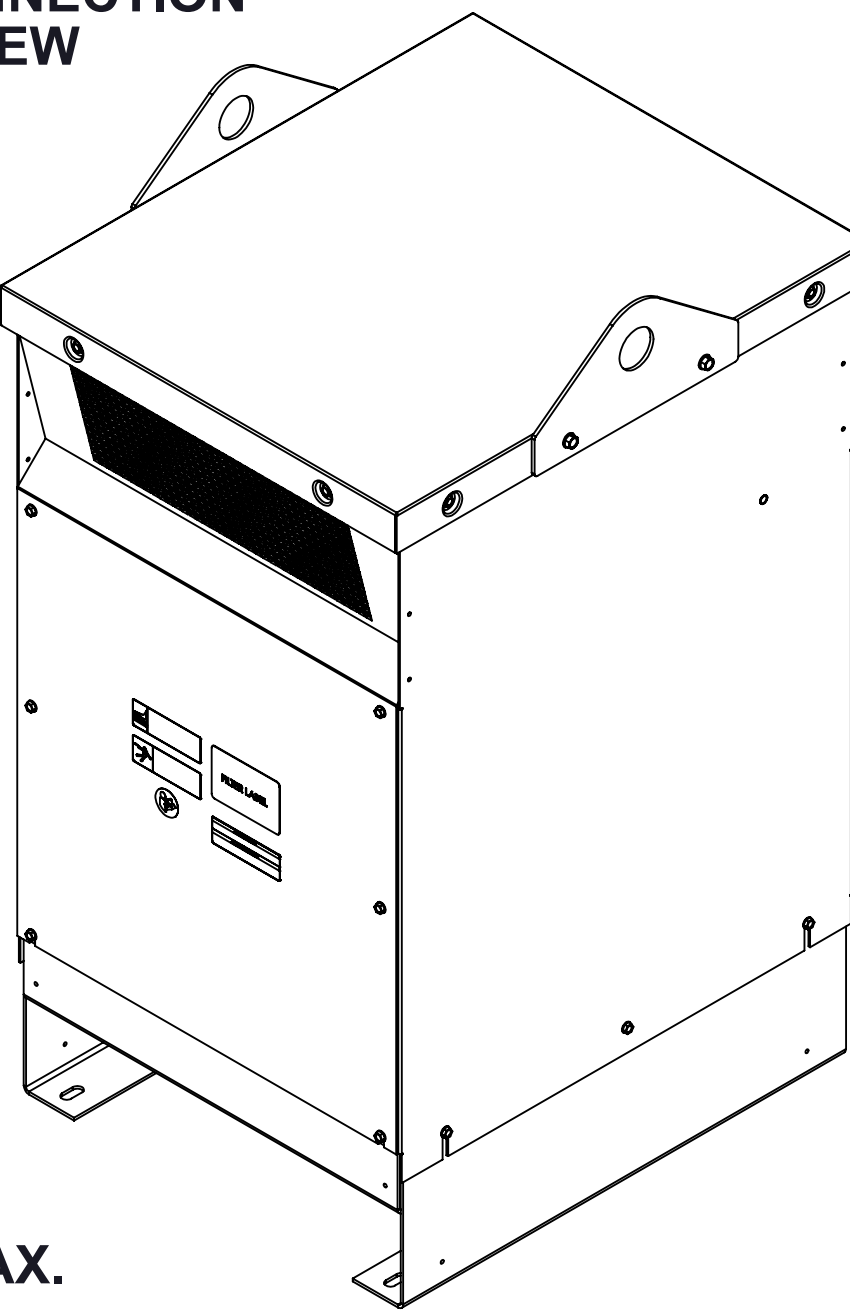
TOP VIEW  
(PANELS REMOVED)



(FRONT VIEW)  
FIELD TERMINAL  
DETAIL  
(6 PLACES)  
(U1, U2, V1, V2, W1, W2)



CUSTOMER CONNECTION  
DETAIL VIEW



NOTES:

1. WIRE RANGE: 4 - 18 AWG
2. TERMINAL SCREW TIGHTENING TORQUE: 16 IN/LBS, MAX.
3. WIRE RANGE: 350 kcmil - 6 AWG
4. TERMINAL SCREW TIGHTENING TORQUE: 500 IN/LBS, MAX.

THE COMPONENT, PART OR ASSEMBLY DESCRIBED IN THIS DOCUMENT MUST COMPLY WITH THE EU(EUROPEAN UNION) DIRECTIVE RoHS2		MATERIAL		CONFIDENTIAL AND PROPRIETARY INFORMATION THIS DOCUMENT CONTAINS CONFIDENTIAL AND PROPRIETARY INFORMATION OF MTE CORPORATION AND MAY NOT BE USED, COPIED OR DISCLOSED TO OTHERS EXCEPT WITH THE AUTHORIZED WRITTEN PERMISSION OF MTE CORPORATION		
CONTAINS <0.1% OF ANY SVHC BY WEIGHT PER REACH REGULATION				DESCRIPTION		
UNLESS OTHERWISE SPECIFIED DIMENSIONS ARE IN INCHES [MM] TOLERANCES ARE:		DRAWN MM		DATE 07/31/14		
ANGLES: ± 1 °		CHECKED RH		DATE 03/18/15		
1 PLACE .XX: ± .1 [2.5]		APPROVED RH		DATE 03/18/15		
2 PLACE .XX: ± .03 [0.76]				SIZE D		
3 PLACE .XXX: ± .010 [0.254]				DWG No. CD DVSG0365E		
				REV 01		
				SCALE 1:4		
				SHEET 1 OF 1		

