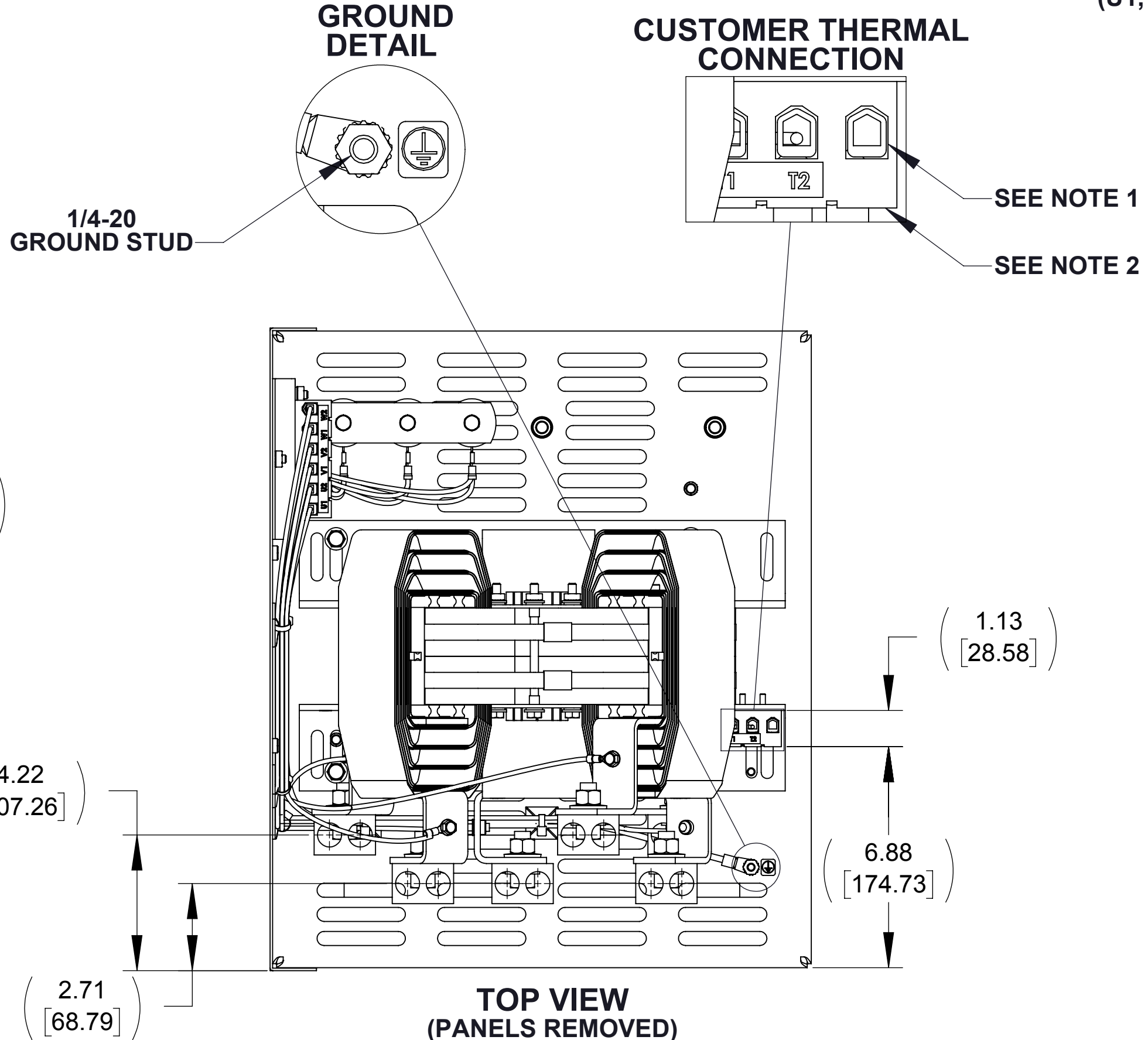
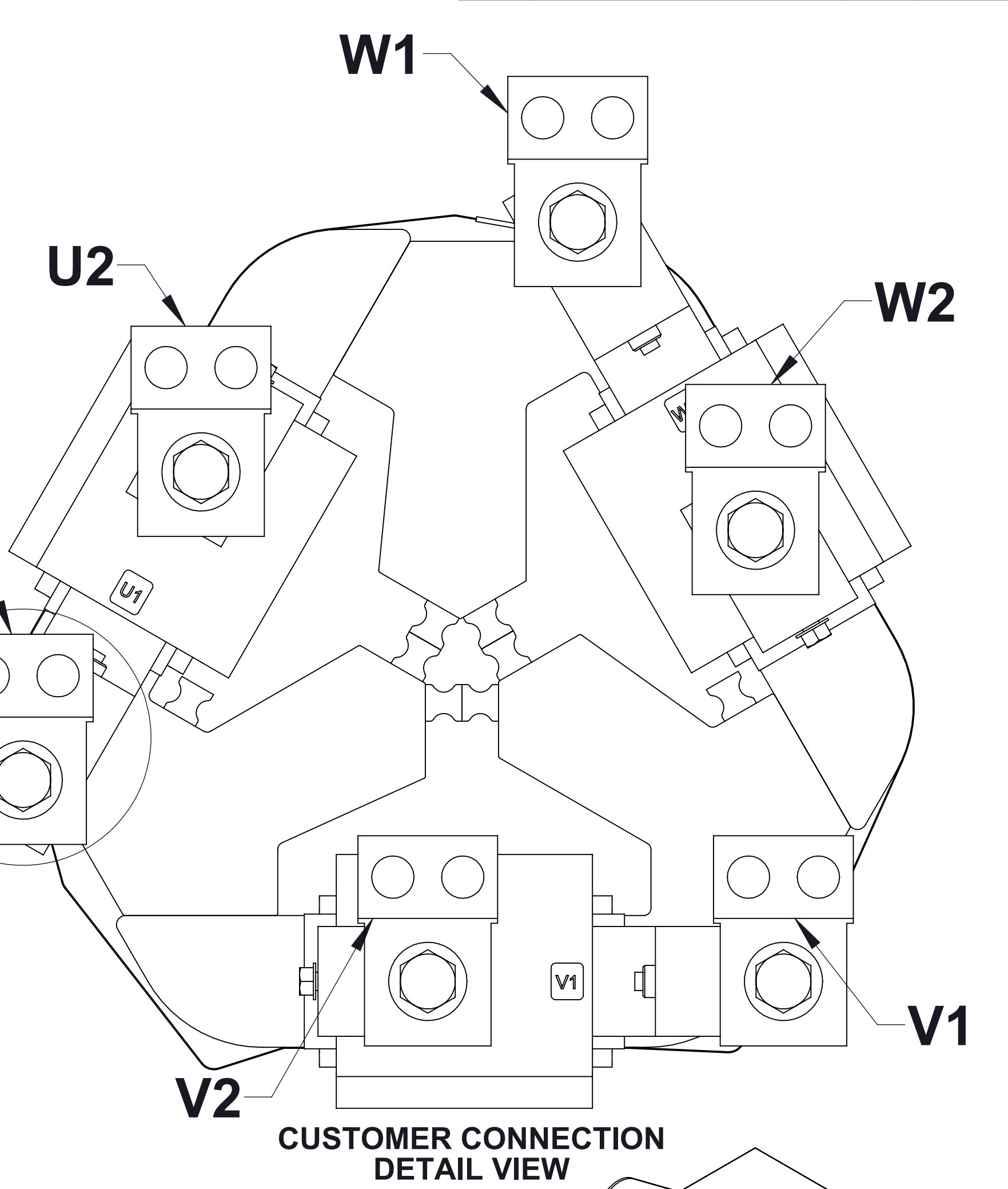
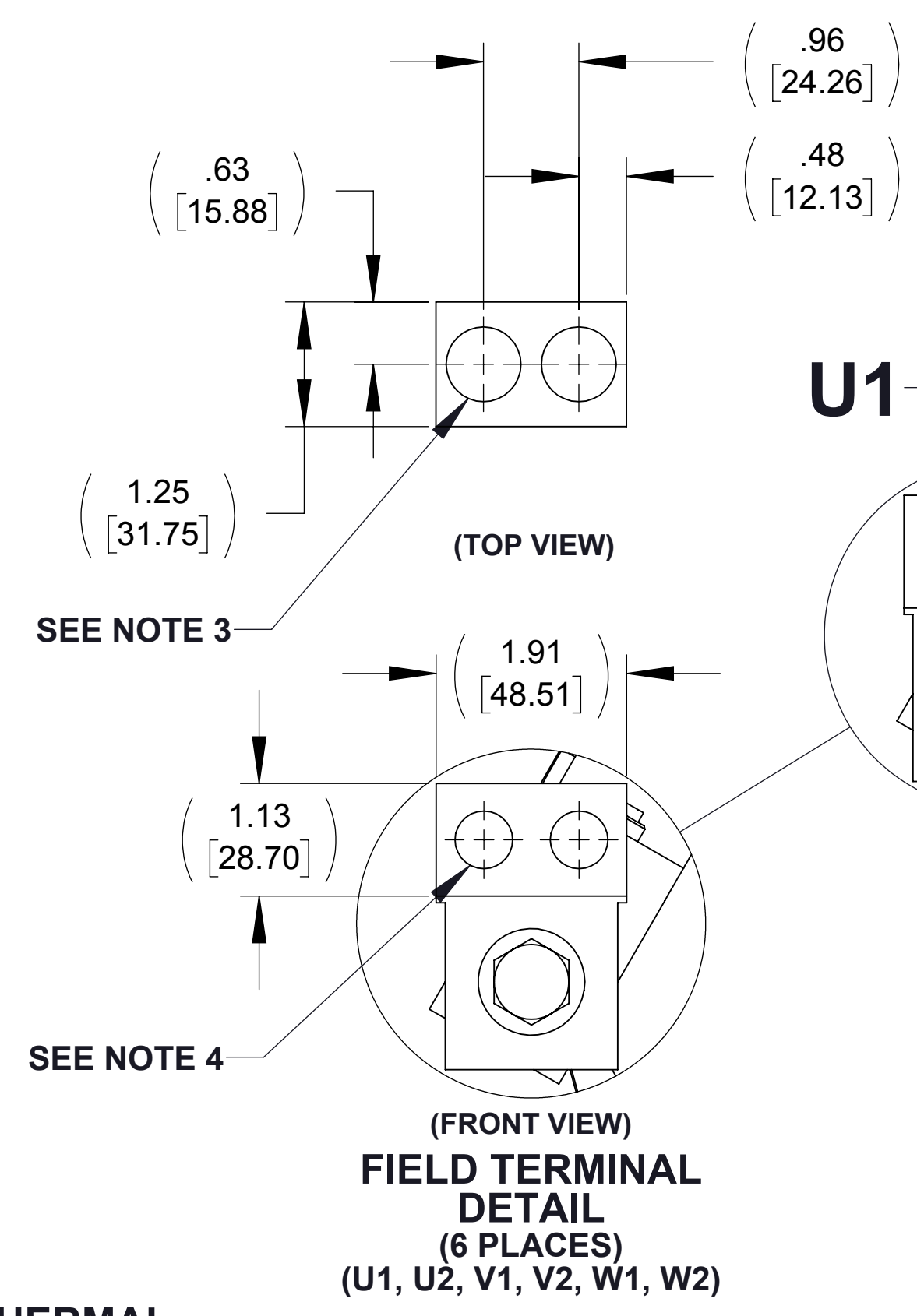
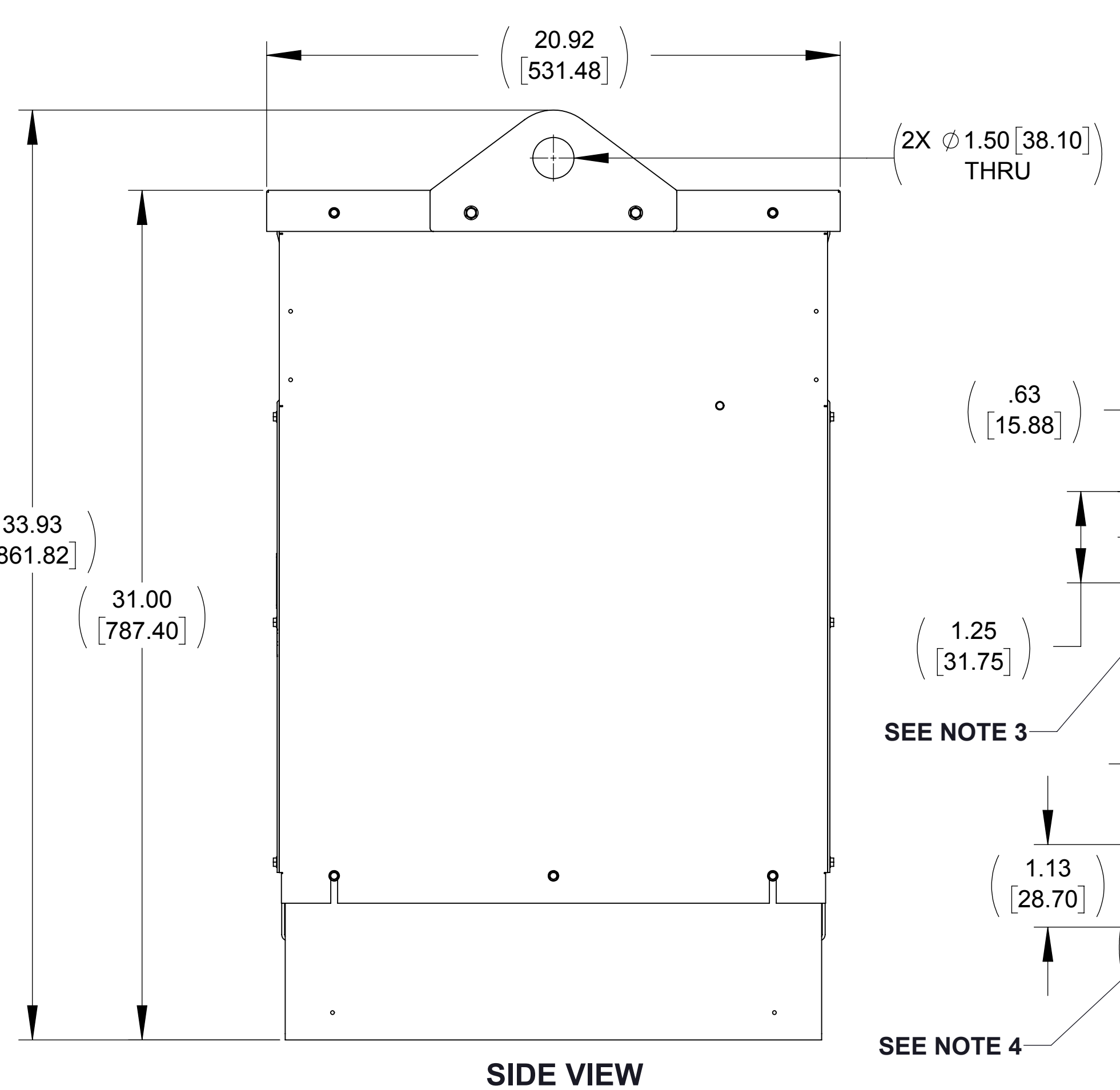
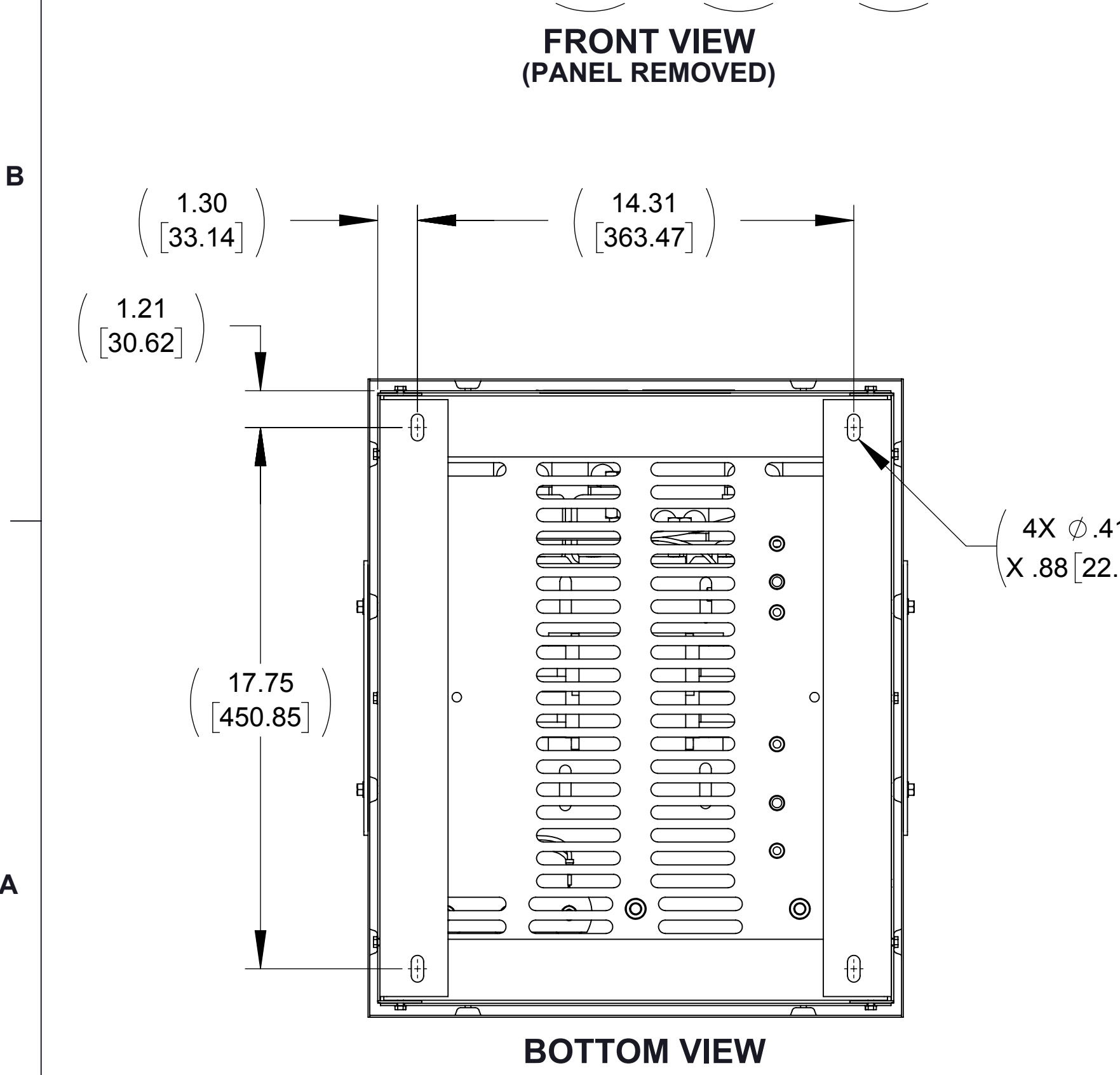
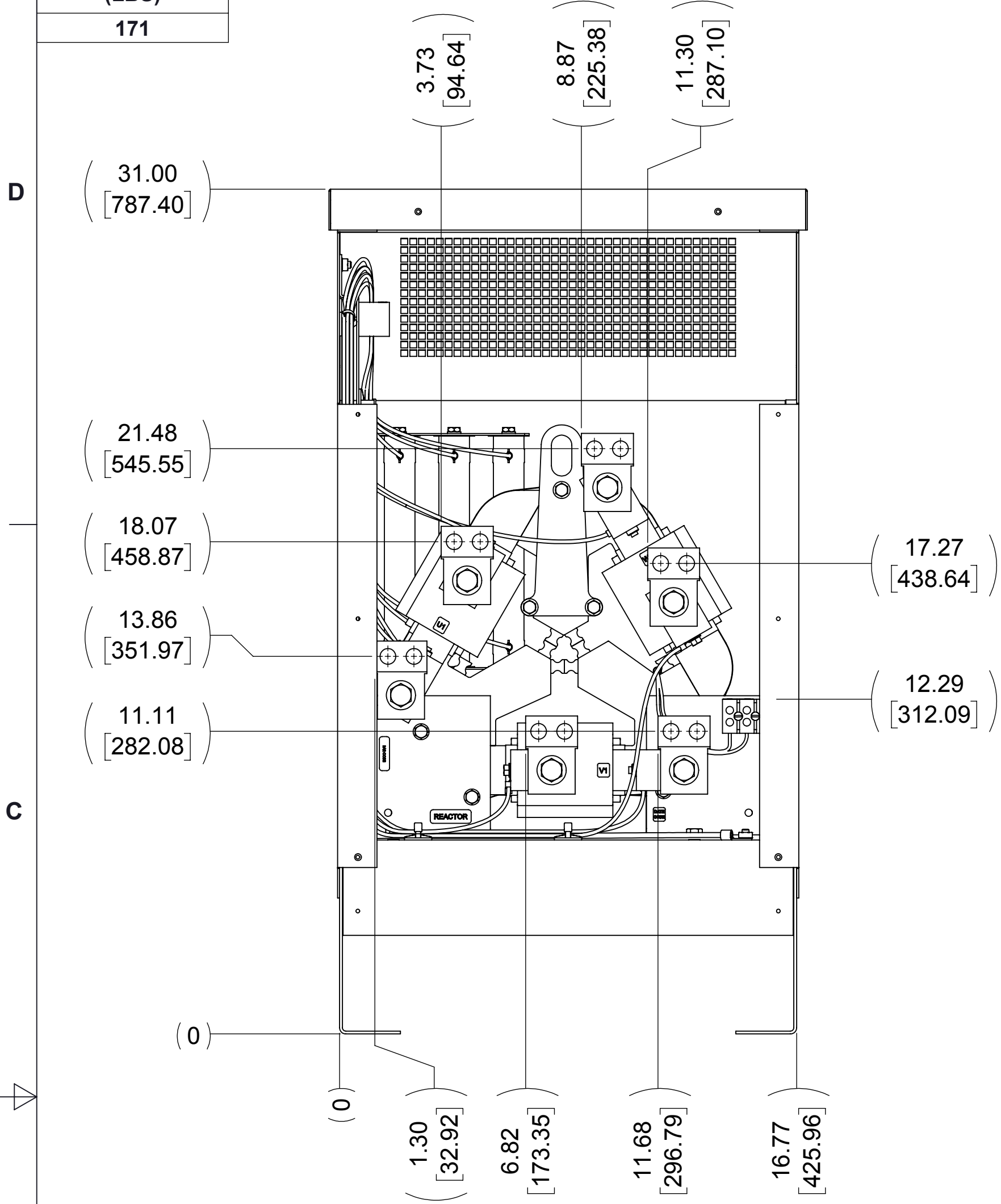



APPROX WEIGHT (LBS)
171

ECO No	DESCRIPTION	REV BY	DATE
M9495	DIM 4.22 WAS 4.71	RAH	03/17/15



- NOTES:
1. WIRE RANGE: 4 - 18 AWG
 2. TERMINAL SCREW TIGHTENING TORQUE: 16 IN/LBS, MAX.
 3. WIRE RANGE: 350 kcmil - 6 AWG
 4. TERMINAL SCREW TIGHTENING TORQUE: 500 IN/LBS, MAX.

THE COMPONENT, PART OR ASSEMBLY DESCRIBED IN THIS DOCUMENT MUST COMPLY WITH THE EU(EUROPEAN UNION) DIRECTIVE RoHS2		MATERIAL		CONFIDENTIAL AND PROPRIETARY INFORMATION THIS DOCUMENT CONTAINS CONFIDENTIAL AND PROPRIETARY INFORMATION OF MTE CORPORATION AND MAY NOT BE USED, COPIED OR DISCLOSED TO OTHERS EXCEPT WITH THE AUTHORIZED WRITTEN PERMISSION OF MTE CORPORATION		
CONTAINS <0.1% OF ANY SVHC BY WEIGHT PER REACH REGULATION				DESCRIPTION		
<div>UNLESS OTHERWISE SPECIFIED DIMENSIONS ARE IN INCHES [MM] TOLERANCES ARE:</div> <div>ANGLES: ± 1 °</div> <div>1 PLACE .X: ± .1 [2.5]</div> <div>2 PLACE .XX: ± .03 [0.76]</div> <div>3 PLACE .XXX: ± .010 [0.254]</div>				<div>DV SENTRY 305A 380-600V FILTER, NEMA 1/2 ENCL.</div>		
<div> AN BL POWER ELECTRONICS COMPANY</div> <div>N83 W13330 Leon Road Menomonee Falls, WI 53051 USA 800.455-4683 262.253.8200</div>		DRAWN	DATE	SIZE	DWG No.	REV
		MM	07/31/14			
		CHECKED	DATE			
RH	03/18/15					
APPROVED	DATE	SCALE	1:4	CD DVSG0305E	SHEET 1 OF 1	
RH	03/18/15					