

APPROX WEIGHT
(LBS)
166

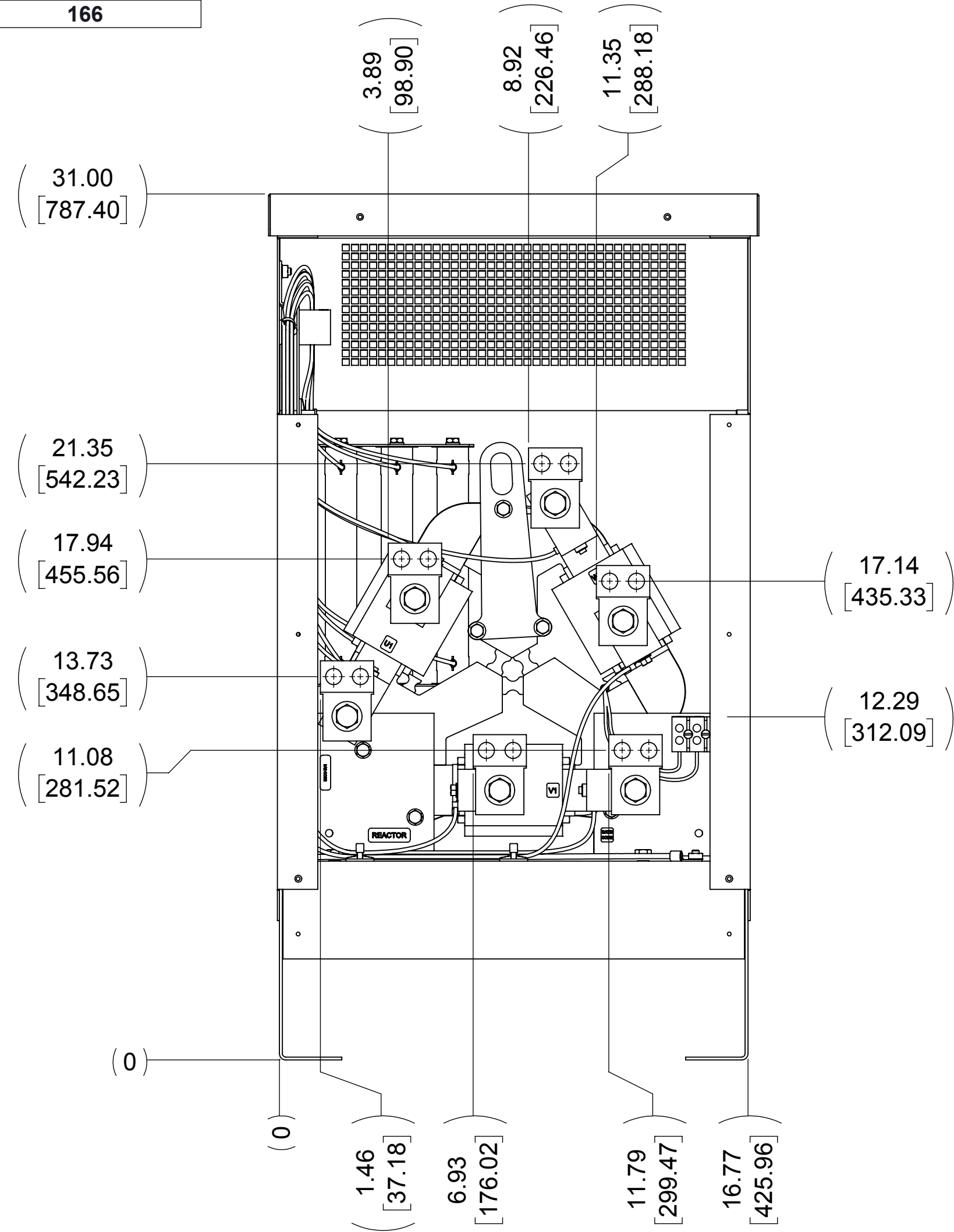
ECO No	DESCRIPTION	REV BY	DATE
M9495	DIM 4.23 WAS 4.73	RAH	03/17/15

D

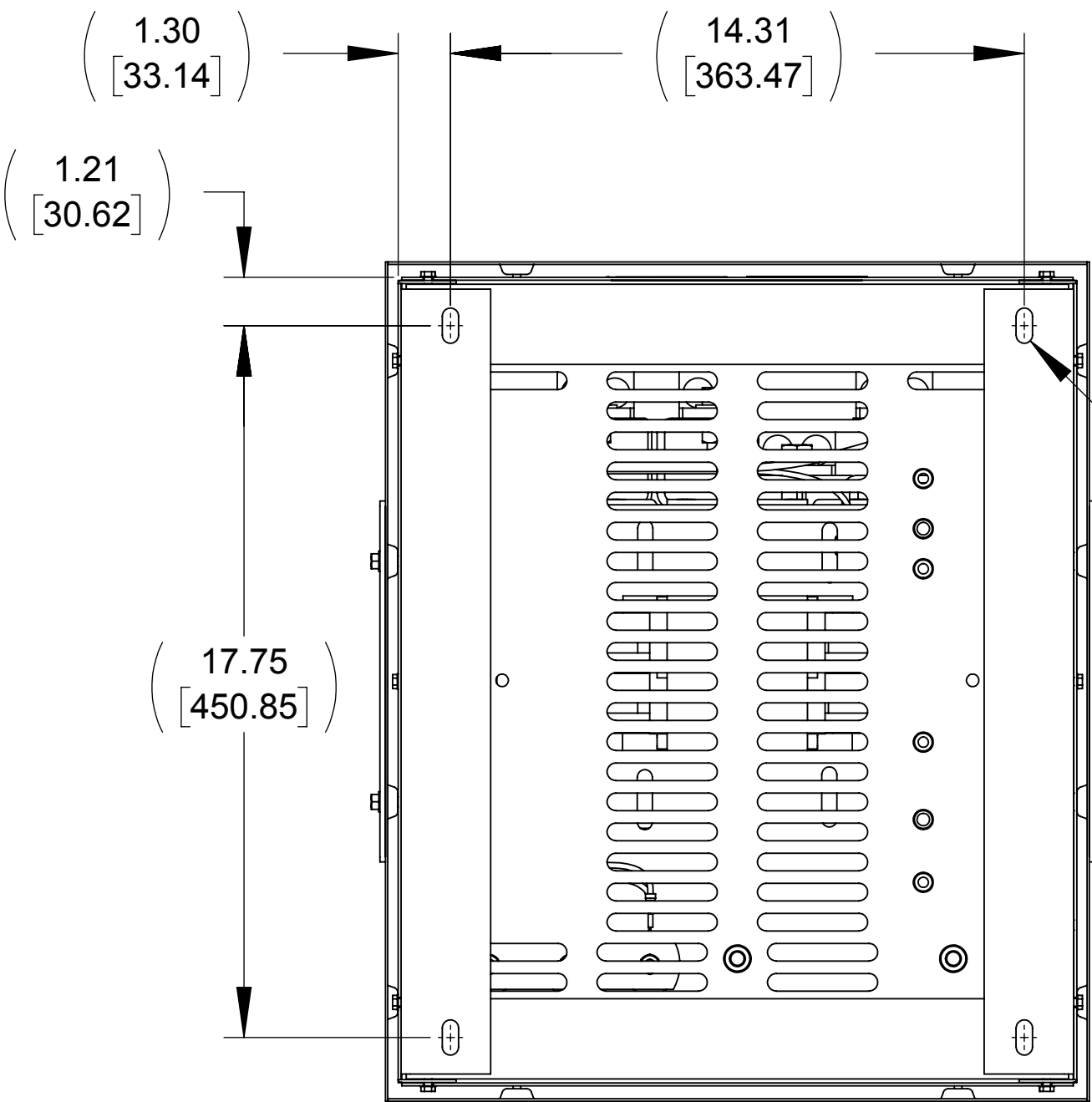
C

B

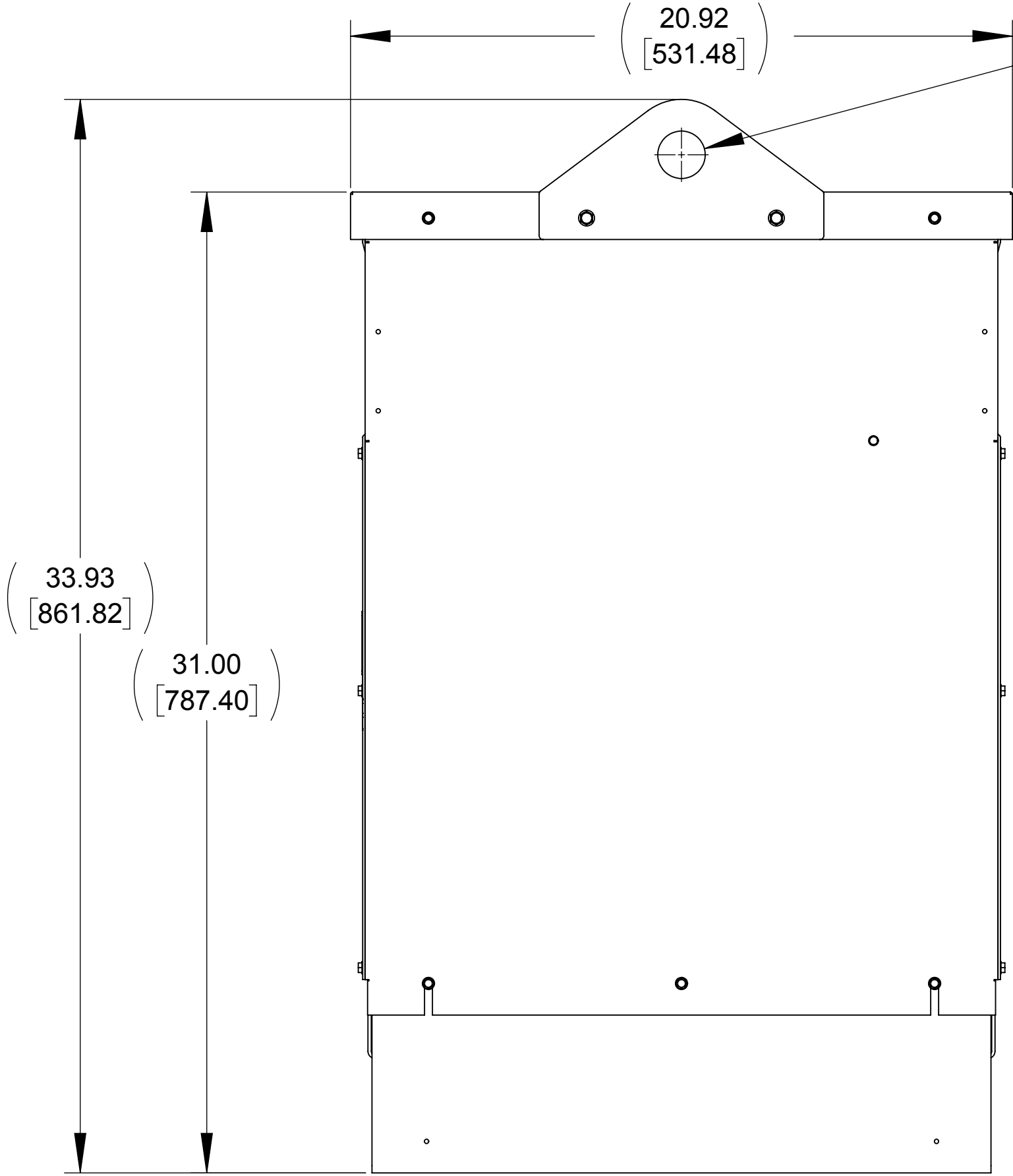
A



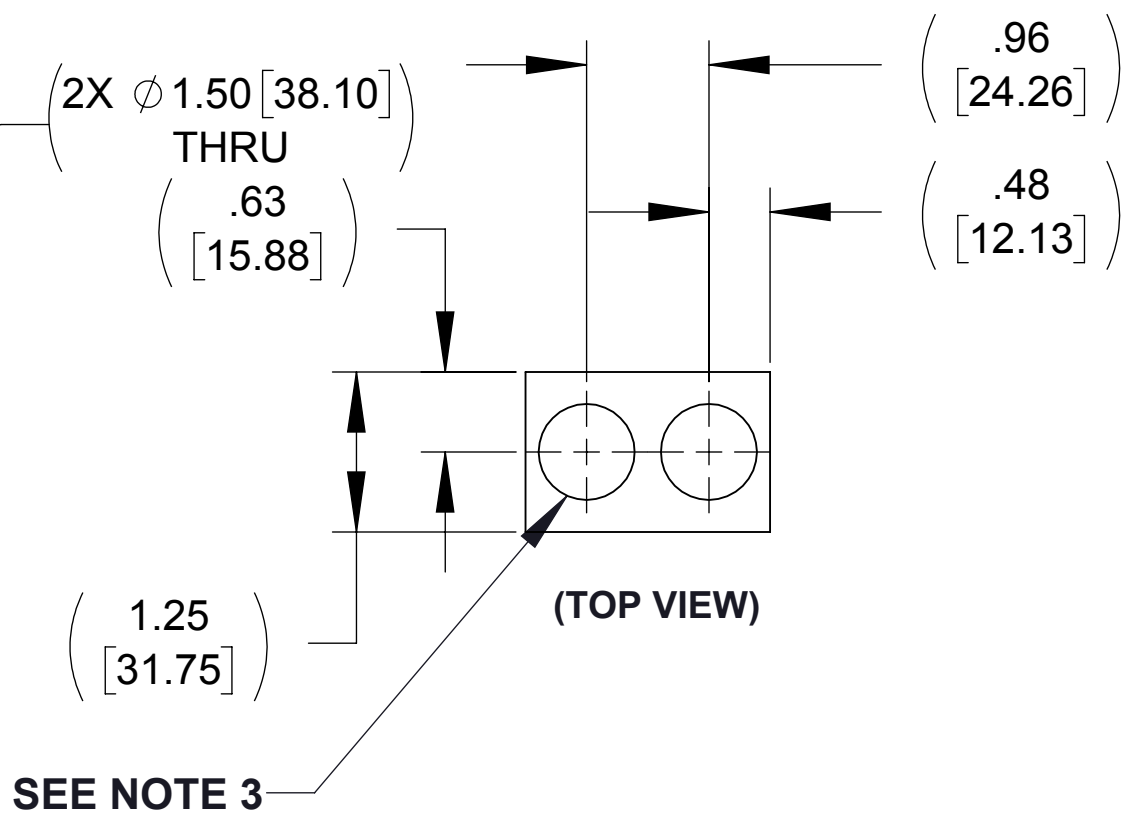
FRONT VIEW
(PANEL REMOVED)



BOTTOM VIEW

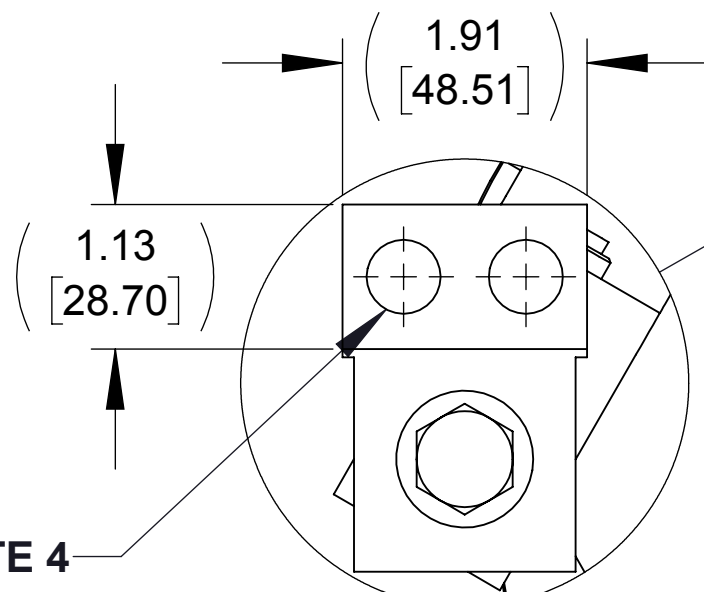


SIDE VIEW



(TOP VIEW)

SEE NOTE 3



(FRONT VIEW)

FIELD TERMINAL
DETAIL
(6 PLACES)
(U1, U2, V1, V2, W1, W2)

GROUND
DETAIL

1/4-20
GROUND STUD

CUSTOMER THERMAL
CONNECTION

SEE NOTE 1

SEE NOTE 2


4X Ø.41 [10.41]
X .88 [22.35] SLOT



TOP VIEW
(PANELS REMOVED)

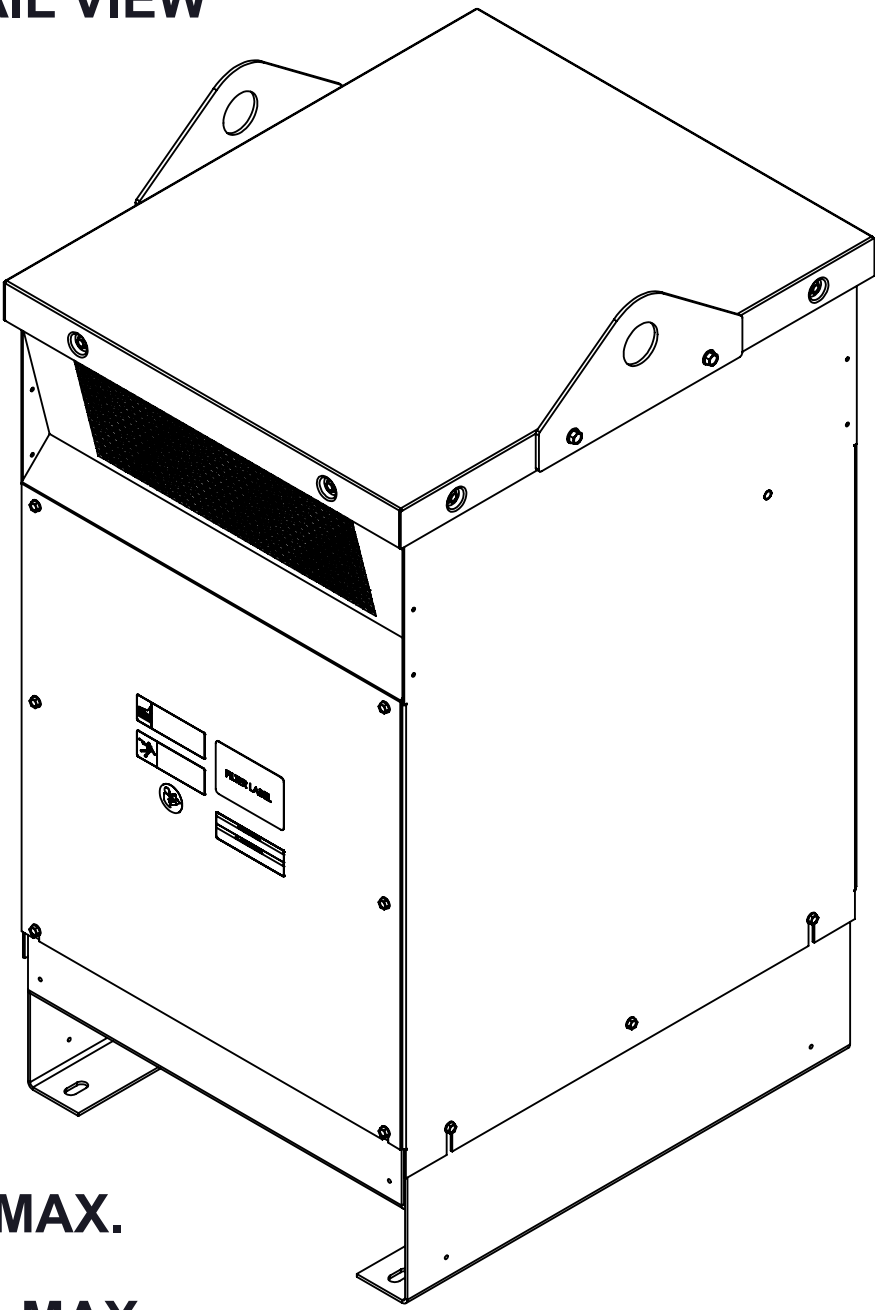
NOTES:

1. WIRE RANGE: 4 - 18 AWG.
2. TERMINAL SCREW TIGHTENING TORQUE: 16 IN/LBS, MAX.
3. WIRE RANGE: 350 kcmil - 6 AWG.
4. TERMINAL SCREW TIGHTENING TORQUE: 500 IN/LBS, MAX.

THE COMPONENT, PART OR ASSEMBLY DESCRIBED IN THIS DOCUMENT MUST COMPLY WITH THE EU(EUROPEAN UNION) DIRECTIVE RoHS2		MATERIAL		CONFIDENTIAL AND PROPRIETARY INFORMATION THIS DOCUMENT CONTAINS CONFIDENTIAL AND PROPRIETARY INFORMATION OF MTE CORPORATION AND MAY NOT BE USED, COPIED OR DISCLOSED TO OTHERS EXCEPT WITH THE AUTHORIZED WRITTEN PERMISSION OF MTE CORPORATION			
CONTAINS <0.1% OF ANY SVHC BY WEIGHT PER REACH REGULATION							
UNLESS OTHERWISE SPECIFIED DIMENSIONS ARE IN INCHES [MM] TOLERANCES ARE: ANGLES: ± 1 ° 1 PLACE .X: ± .1 [2.5] 2 PLACE .XX: ± .03 [0.76] 3 PLACE .XXX: ± .010 [0.254]				DV SENTRY 250A 380-600V FILTER, NEMA 1/2 ENCL.			
		DRAWN	DATE				
		MM	07/31/14				
		CHECKED	DATE				
		RH	03/18/15				
		APPROVED	DATE				
		RH	03/18/15				
				SIZE	DWG No.	REV	
				D	CD DVSG0250E	02	
				SCALE	1:4	SHEET 1 OF 1	

MTE
AN BL POWER ELECTRONICS COMPANY

N83 W13330 Leon Road
Menomonee Falls, WI 53051 USA
800.455.4683
262.253.8200



D

C

B

A