

WEIGHT (LBS)	INDUCTANCE	LOSS (WATTS)
270	0.065 mH	406

ECO No	DESCRIPTION	REV BY	DATE
M8416	MODIFY DIMENSIONS TO CURRENT STANDARDS	SU	02/26/13

D

C

B

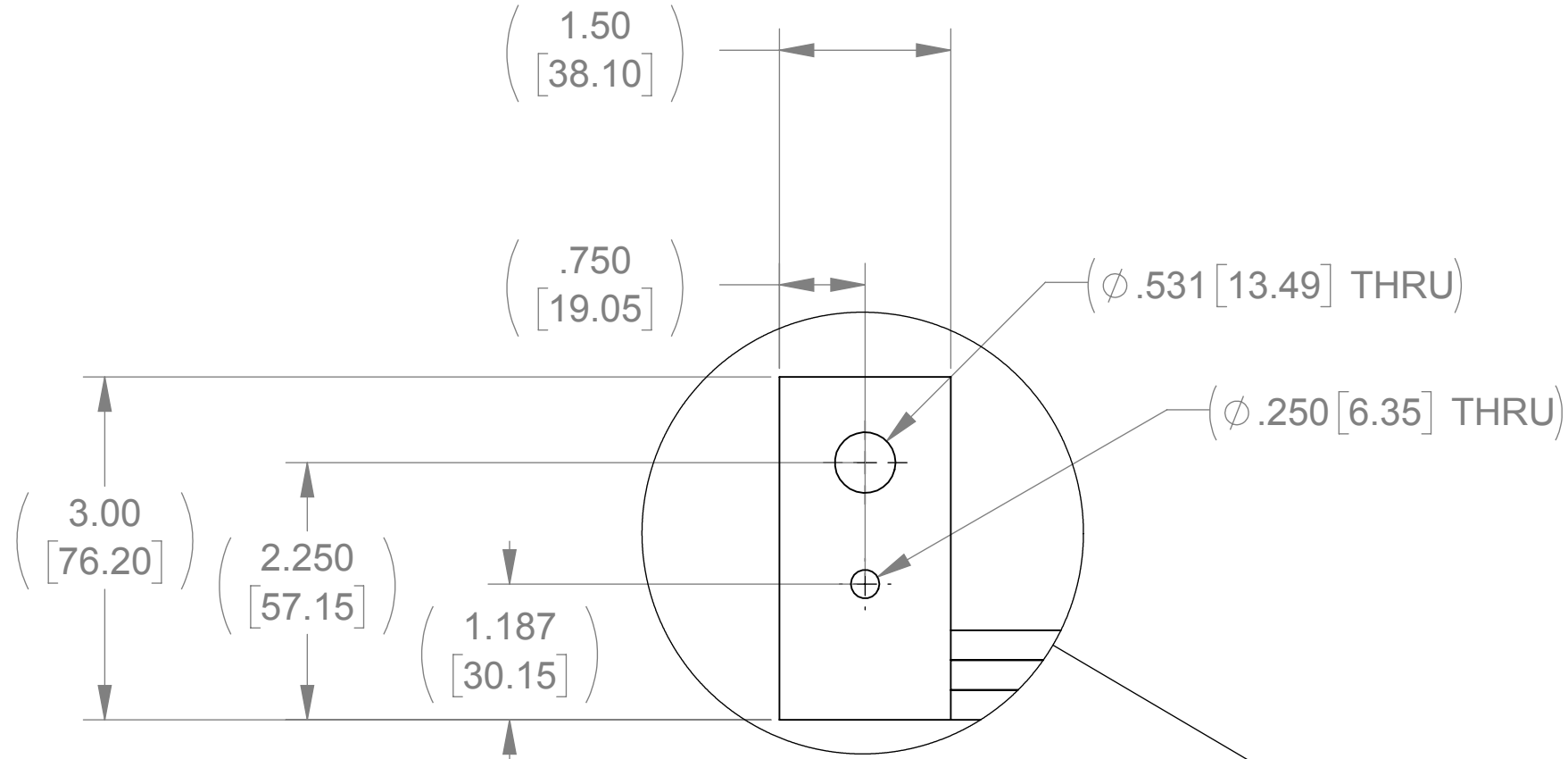
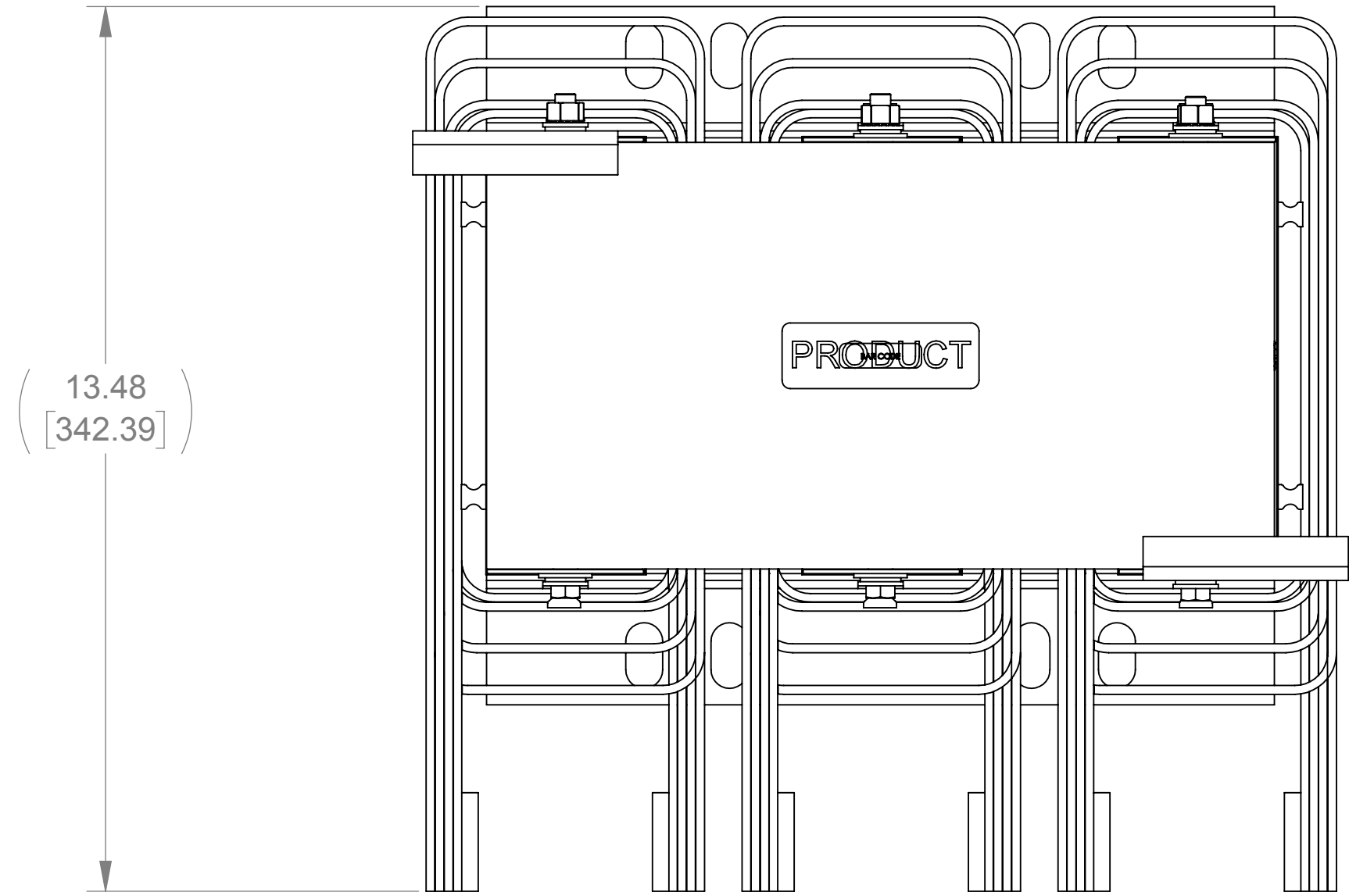
A

D

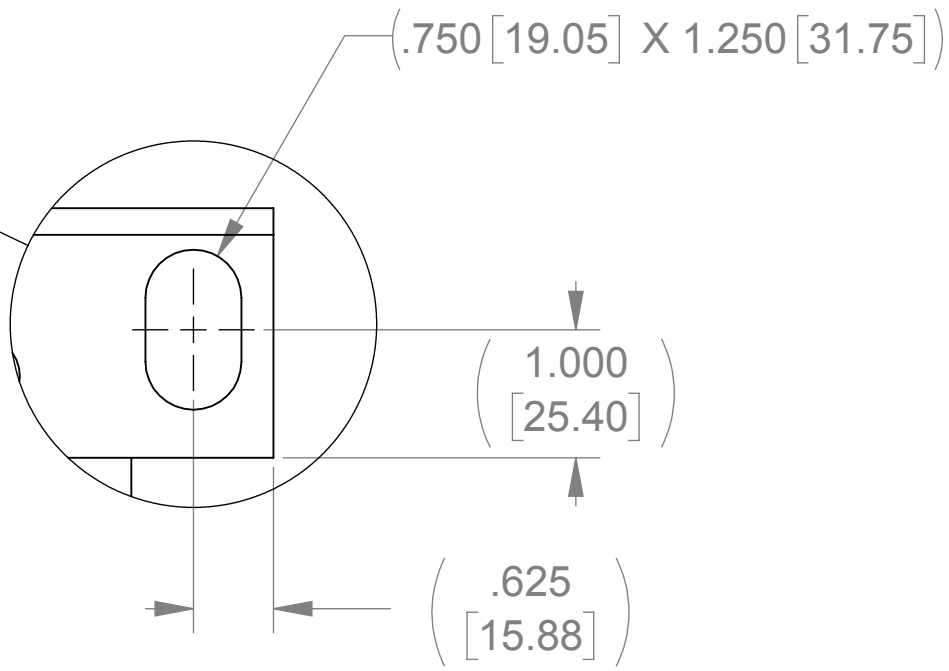
C

B

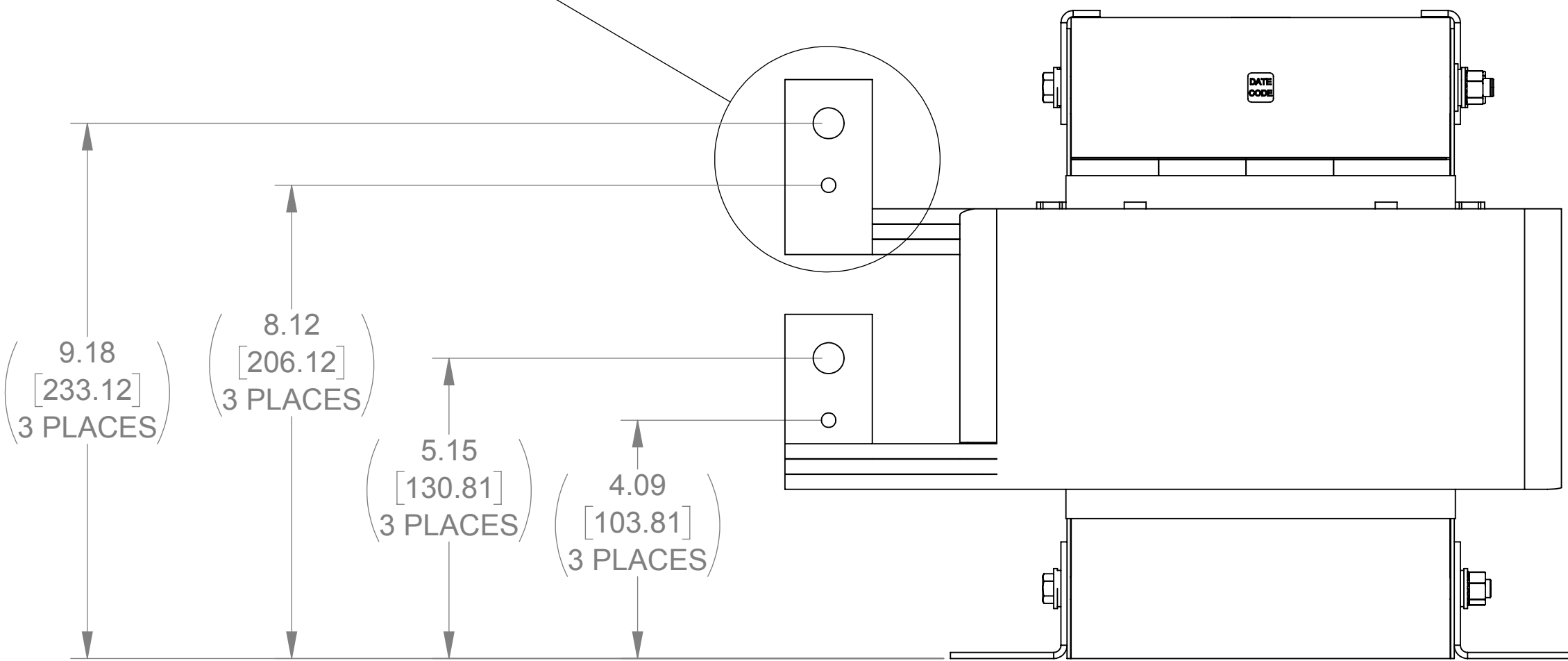
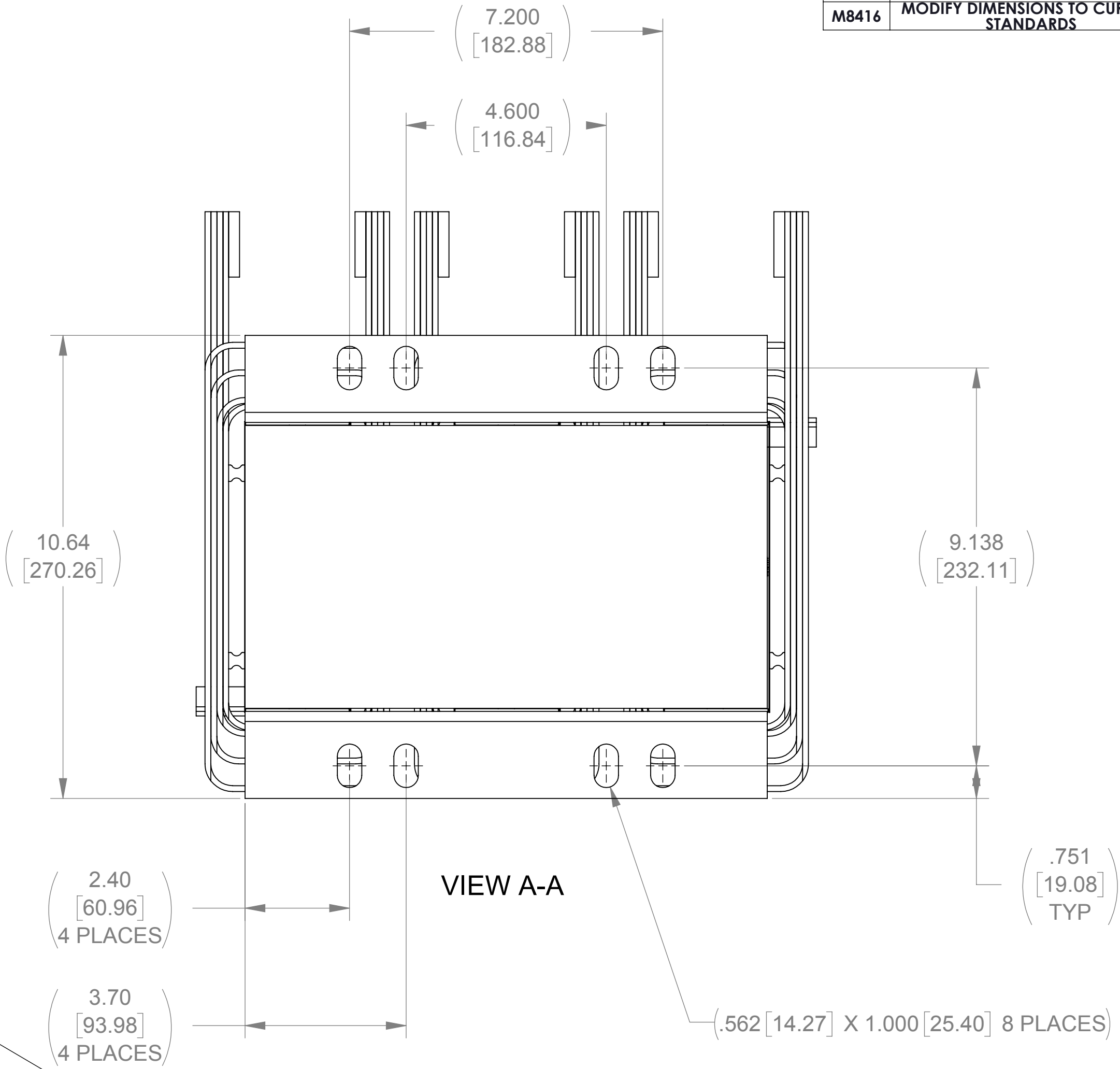
A



DETAIL B  
6 PLACES



DETAIL A  
2 PLACES



THE COMPONENT, PART OR ASSEMBLY DESCRIBED IN THIS DOCUMENT MUST COMPLY WITH THE EU(EUROPEAN UNION) DIRECTIVE RoHS		MATERIAL		CONFIDENTIAL AND PROPRIETARY INFORMATION THIS DOCUMENT CONTAINS CONFIDENTIAL AND PROPRIETARY INFORMATION OF MTE CORPORATION AND MAY NOT BE USED, COPIED OR DISCLOSED TO OTHERS EXCEPT WITH THE AUTHORIZED WRITTEN PERMISSION OF MTE CORPORATION	
CONTAINS <0.1% OF ANY SVHC BY WEIGHT PER REACH REGULATION				DESCRIPTION	
UNLESS OTHERWISE SPECIFIED DIMENSIONS ARE IN INCHES [MM] TOLERANCES ARE: ANGLES: ± 1 ° 1 PLACE .X: ± .1 [2.5] 2 PLACE .XX: ± .03 [0.76] 3 PLACE .XXX: ± .010 [0.254]		<b>MTE</b> AN BL POWER ELECTRONICS COMPANY N83 W13330 Leon Road Menomonee Falls, WI 53051 USA 800.455.4683 262.253.8200		LINE/LOAD REACTOR	
		DRAWN ER	DATE 9/16/05		
		CHECKED TM	DATE 03/21/13		
		APPROVED TM	DATE 03/21/13		
		SIZE D	DWG No. CD RL-60003	REV 16	
		SCALE 1:2		SHEET 1 OF 1	