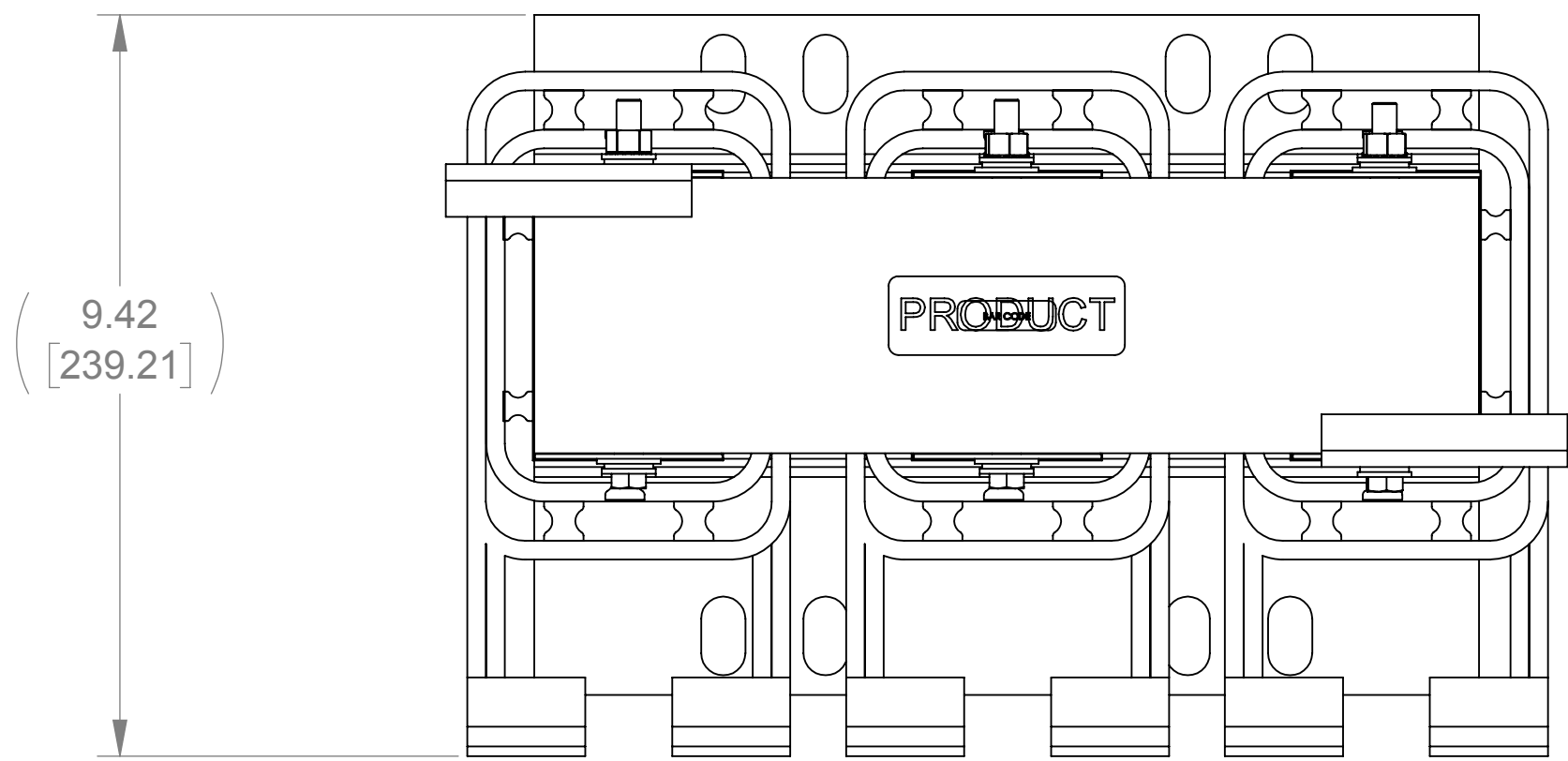
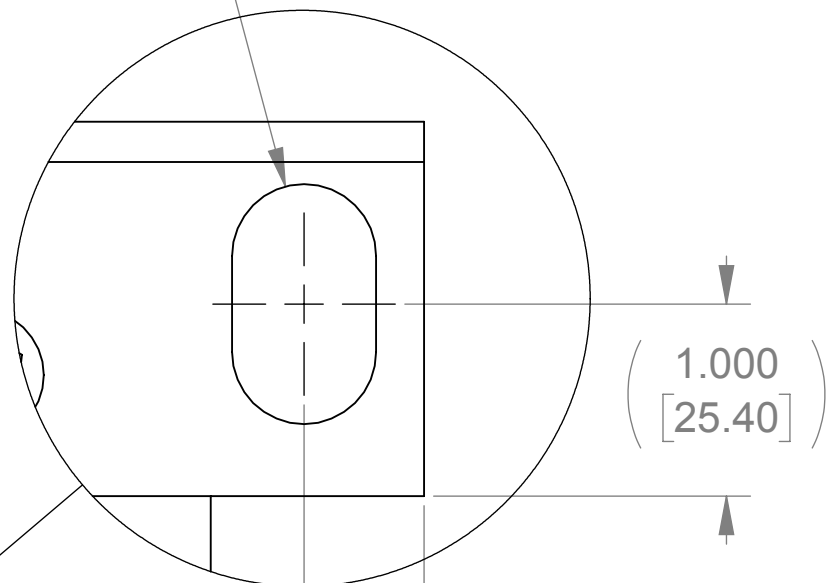


WEIGHT (LBS)	INDUCTANCE	LOSS (WATTS)
160	0.125 mH	642

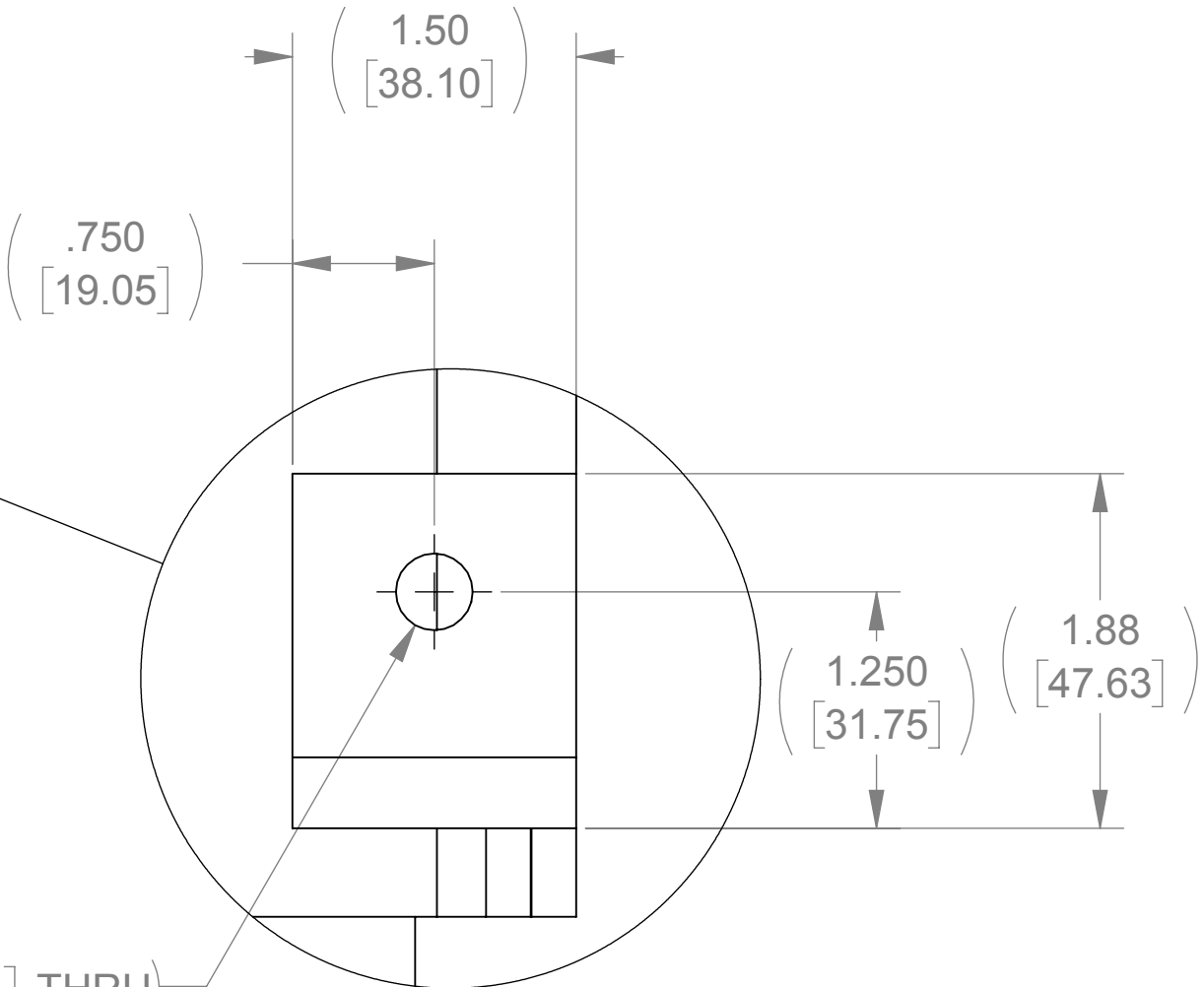
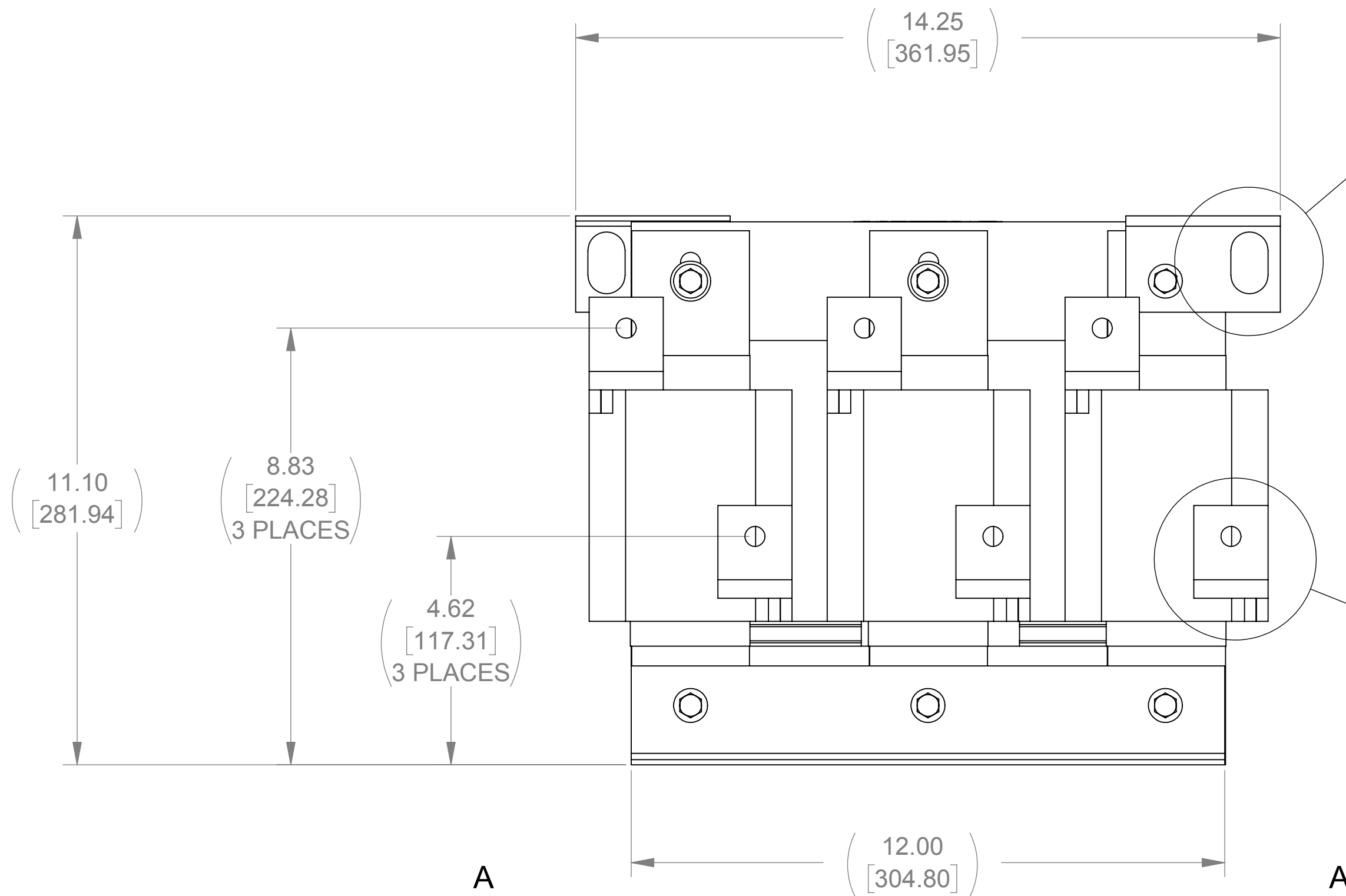
ECO No	DESCRIPTION	REV BY	DATE
M8416	MODIFY DIMENSIONS TO CURRENT STANDARDS	SU	02/26/13



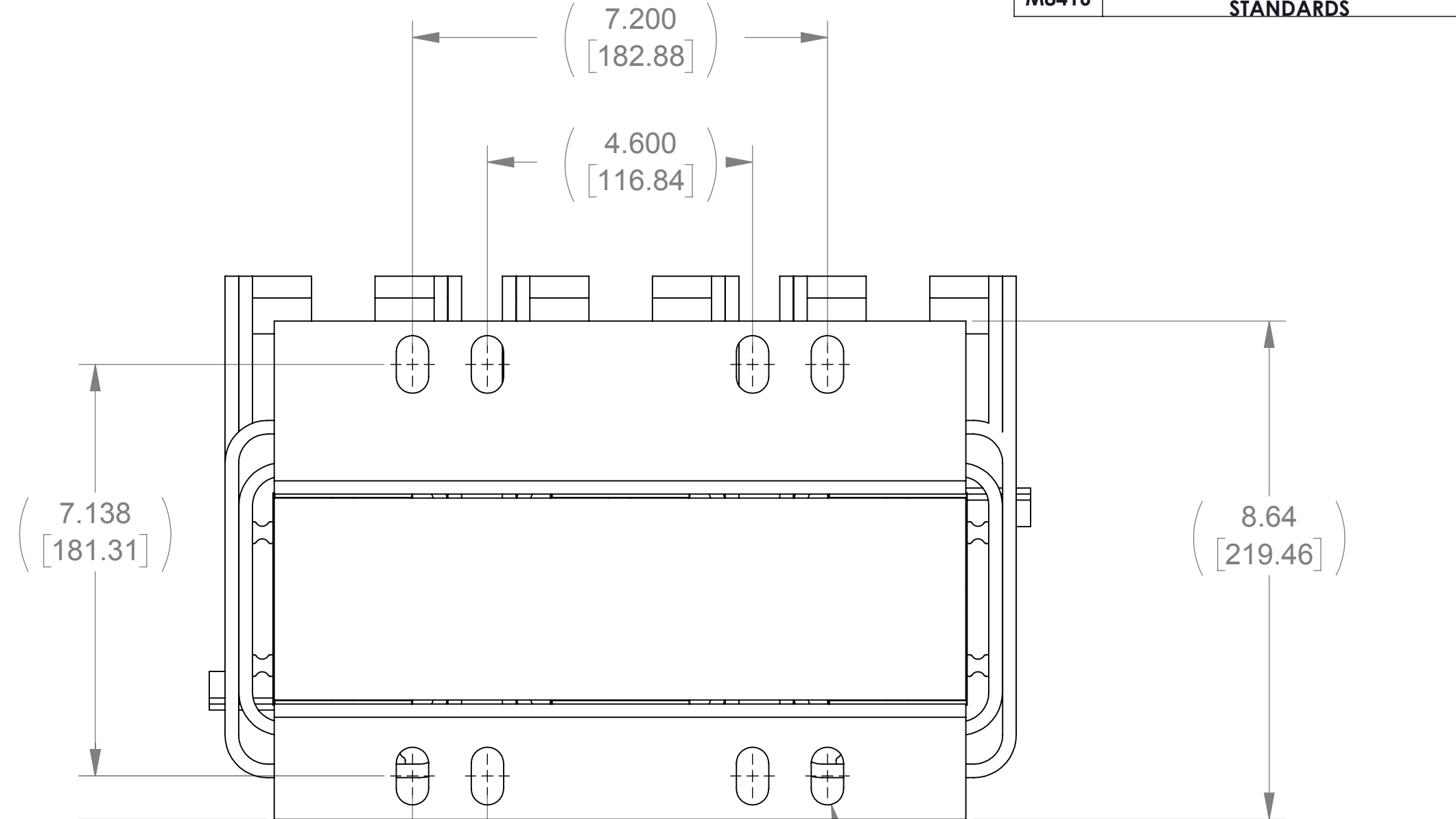
.750 [19.05] X 1.25 [31.75]



DETAIL B
2 PLACES

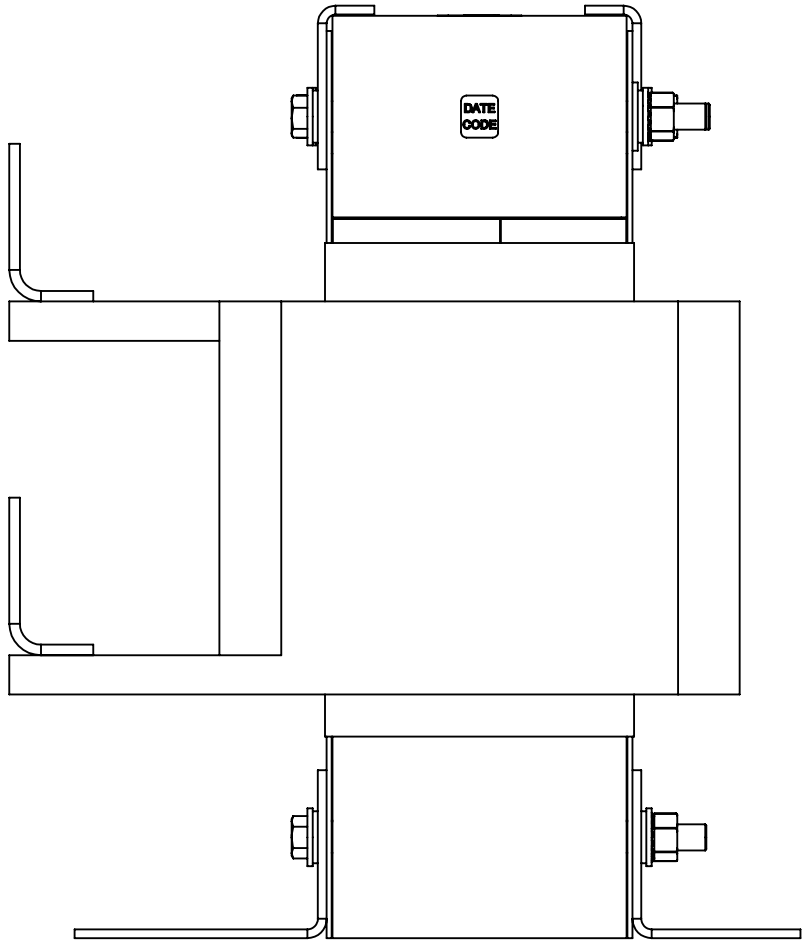


DETAIL A
6 PLACES



VIEW A-A

.562 [14.27] X 1.0000 [25.40] 8 PLACES



THE COMPONENT, PART OR ASSEMBLY DESCRIBED IN THIS DOCUMENT MUST COMPLY WITH THE EU(EUROPEAN UNION) DIRECTIVE RoHS		MATERIAL		CONFIDENTIAL AND PROPRIETARY INFORMATION	
CONTAINS <0.1% OF ANY SVHC BY WEIGHT PER REACH REGULATION				THIS DOCUMENT CONTAINS CONFIDENTIAL AND PROPRIETARY INFORMATION OF MTE CORPORATION AND MAY NOT BE USED, COPIED OR DISCLOSED TO OTHERS EXCEPT WITH THE AUTHORIZED WRITTEN PERMISSION OF MTE CORPORATION	
UNLESS OTHERWISE SPECIFIED DIMENSIONS ARE IN INCHES [MM] TOLERANCES ARE:				DESCRIPTION	
ANGLES: ± 1 °				LINE/LOAD REACTOR	
1 PLACE .X: ± .1 [2.5]		DRAWN	ER	DATE	9/22/05
2 PLACE .XX: ± .03 [0.76]		CHECKED	TM	DATE	03/21/13
3 PLACE .XXX: ± .010 [0.254]		APPROVED	TM	DATE	03/21/13
				SIZE	D
				DWG No	CD RL-32003B14
				REV	06
				SCALE	1:2
				SHEET 1 OF 1	

MTE
AN BL POWER ELECTRONICS COMPANY

N83 W13330 Leon Road
Menomonee Falls, WI 53051 USA
800.455.4683
262.253.8200