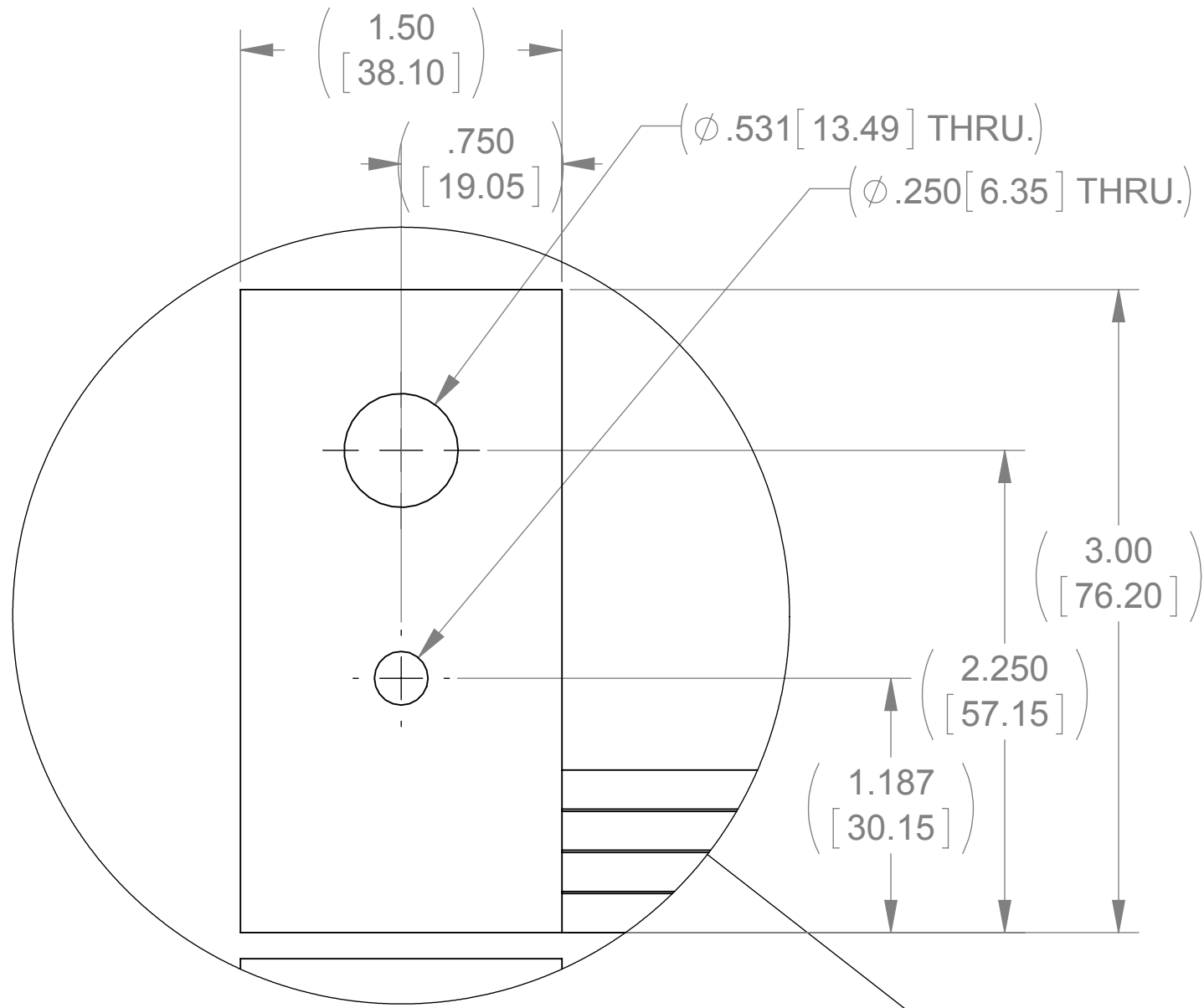
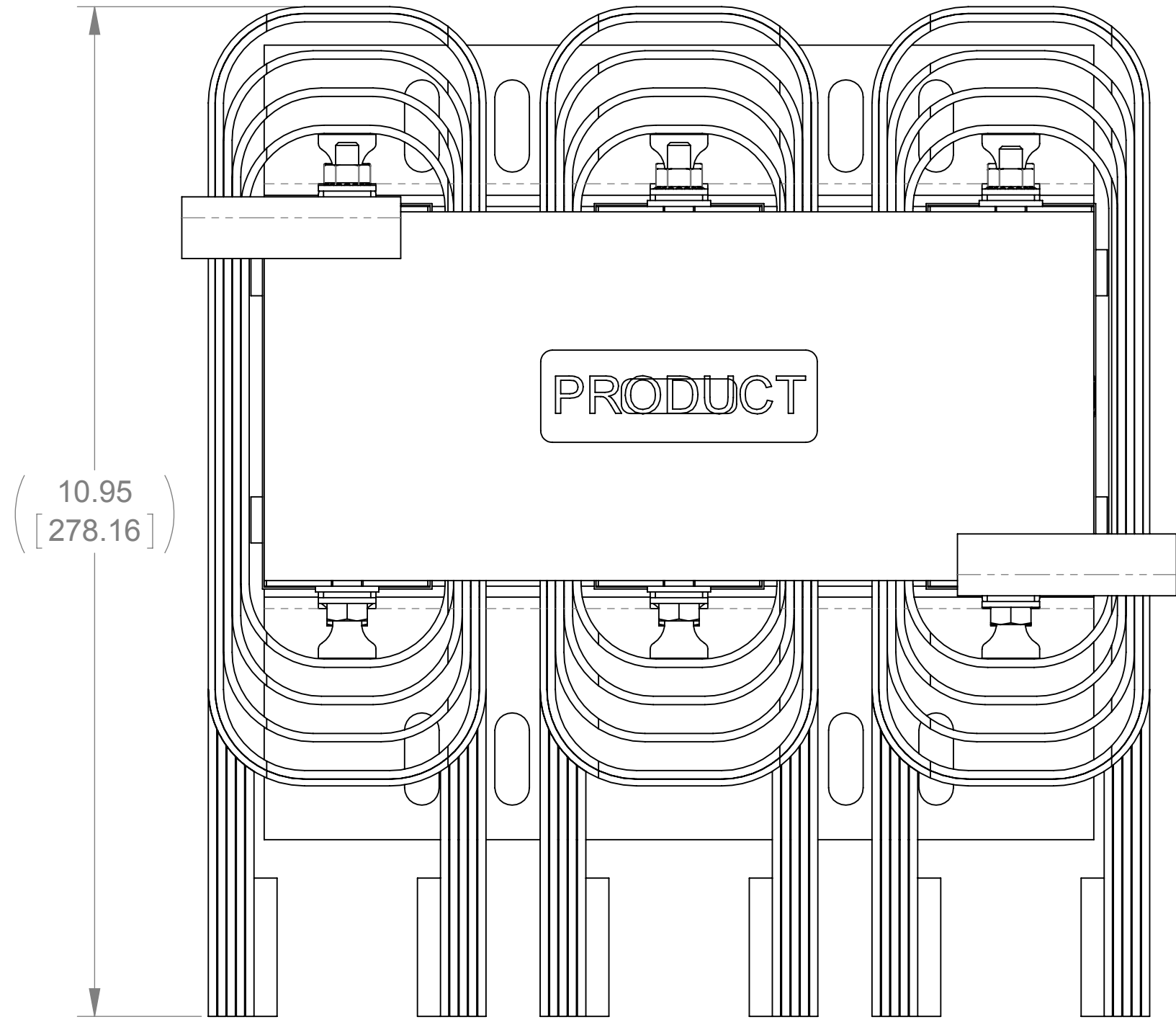
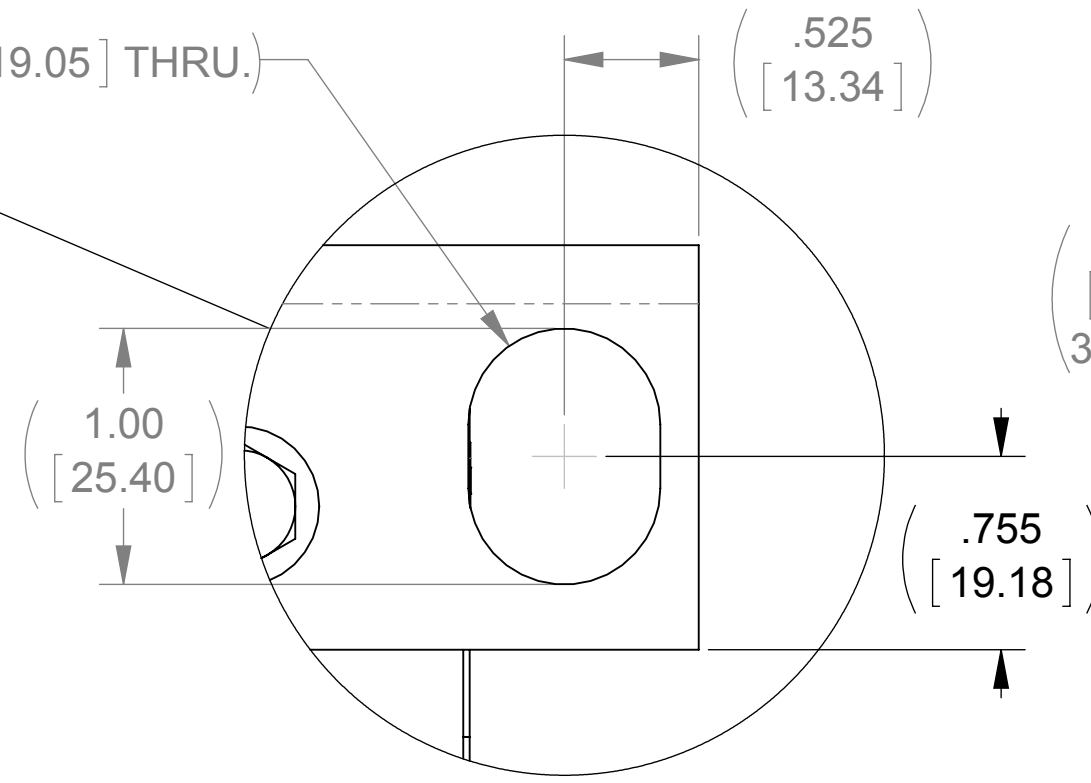
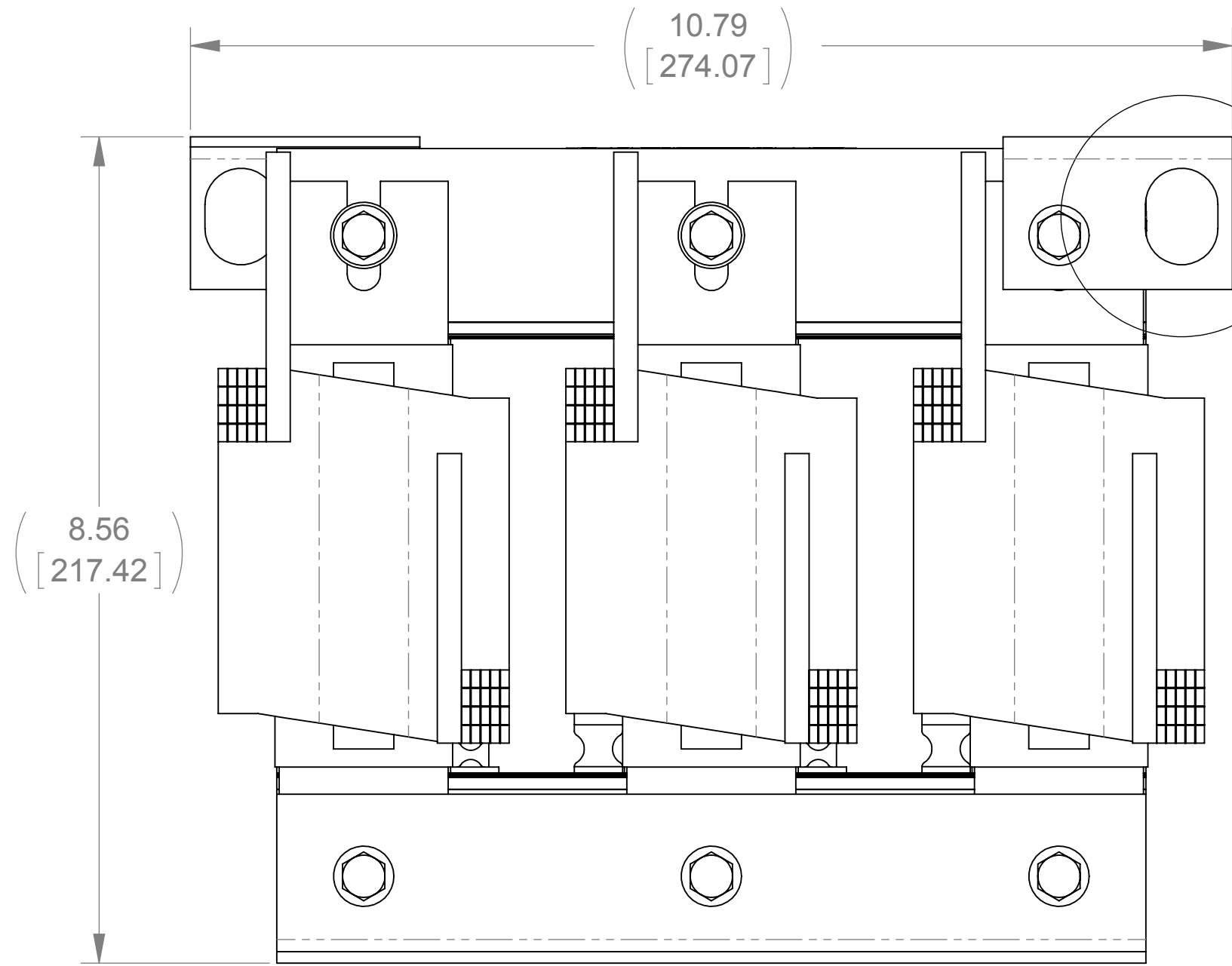


WEIGHT (LBS)	INDUCTANCE	LOSS (WATTS)
105	.017mH	468

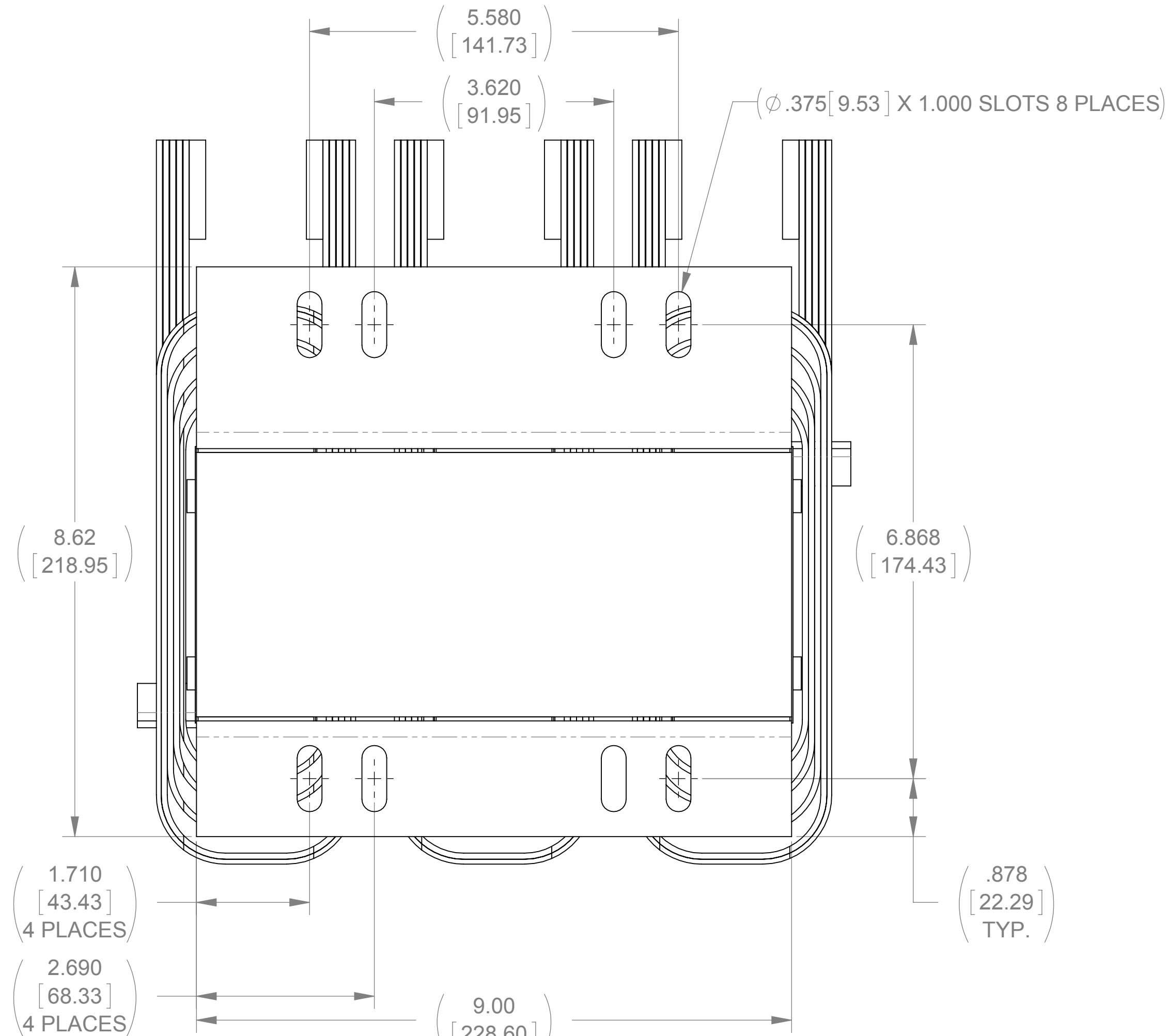
ECO No	DESCRIPTION	REV BY	DATE
M8279	REDRAW IN SOLIDWORKS	JP	11/05/12



DETAIL A
6 PLACES



DETAIL B
2 PLACES



VIEW A-A

THE COMPONENT, PART OR ASSEMBLY DESCRIBED IN THIS DOCUMENT MUST COMPLY WITH THE EU(EUROPEAN UNION) DIRECTIVE RoHS		MATERIAL		CONFIDENTIAL AND PROPRIETARY INFORMATION THIS DOCUMENT CONTAINS CONFIDENTIAL AND PROPRIETARY INFORMATION OF MTE CORPORATION AND MAY NOT BE USED, COPIED OR DISCLOSED TO OTHERS EXCEPT WITH THE AUTHORIZED WRITTEN PERMISSION OF MTE CORPORATION	
CONTAINS <0.1% OF ANY SVHC BY WEIGHT PER REACH REGULATION				DESCRIPTION	
UNLESS OTHERWISE SPECIFIED DIMENSIONS ARE IN INCHES [MM] TOLERANCES ARE: ANGLES: ± 1 ° 1 PLACE .X: ± .1 [2.5] 2 PLACE .XX: ± .03 [0.76] 3 PLACE .XXX: ± .010 [0.254]		DRAWN RKT		DATE 06/17/09	
		CHECKED TM		DATE 11/05/12	
		APPROVED TM		DATE 11/05/12	
				SIZE D	REV 04
				SCALE 4:6	SHEET 1 OF 1



N83 W13330 Leon Road
Menomonee Falls, WI 53051 USA
800.455-4683
262.253-8200

3 PHASE REACTOR

CD RLW-075001