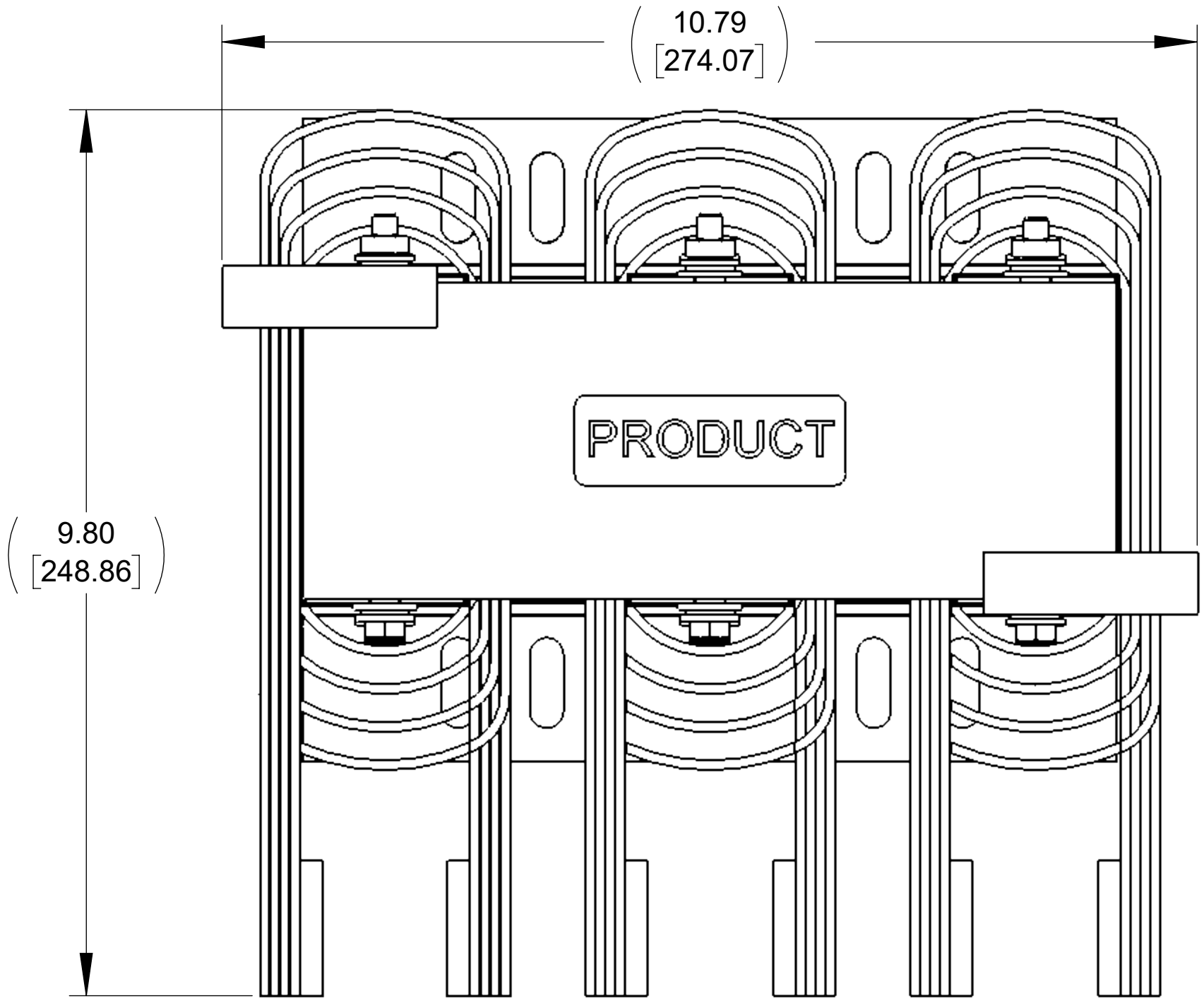
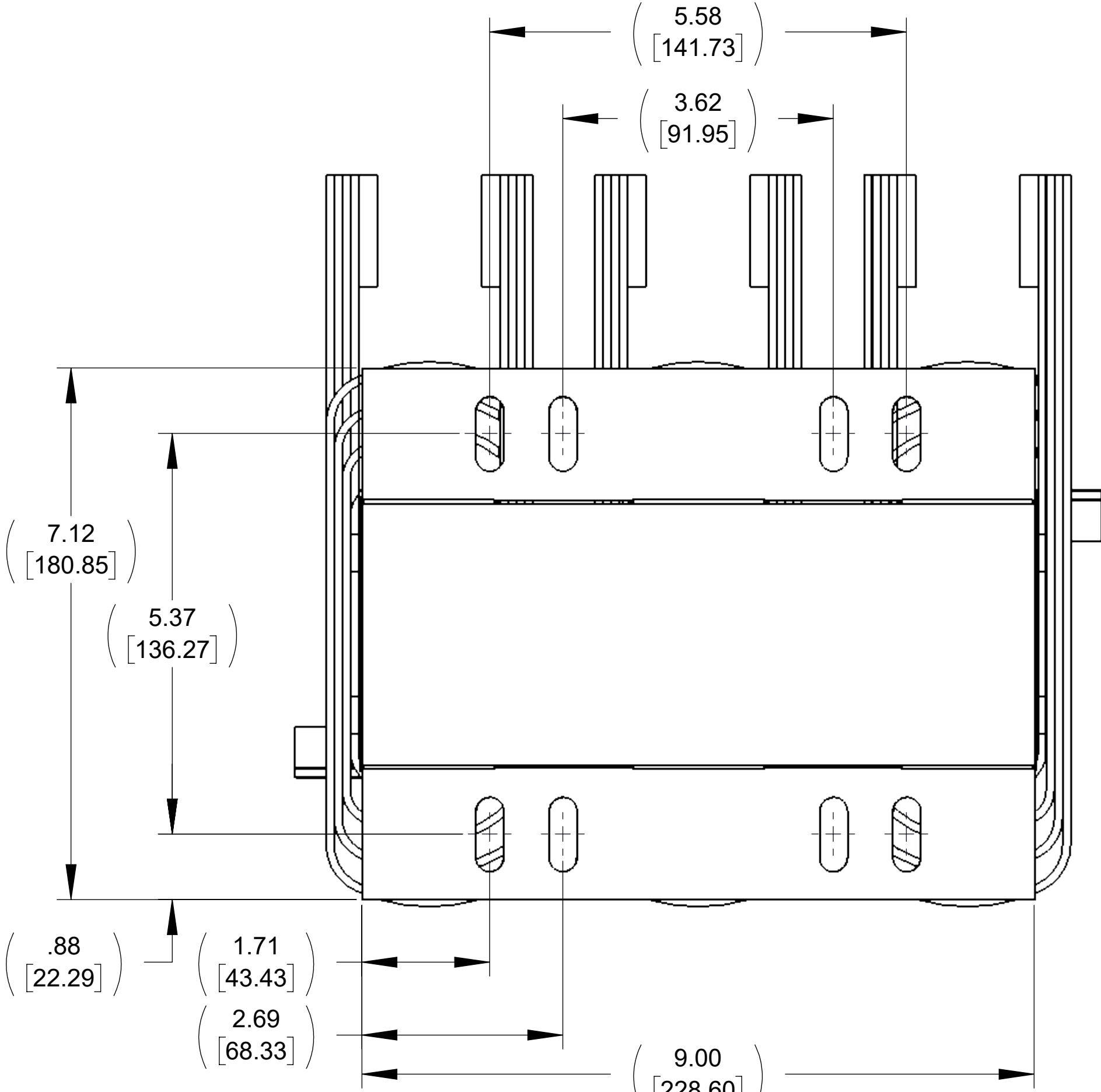


APPROX. WEIGHT  
(LBS)  
85

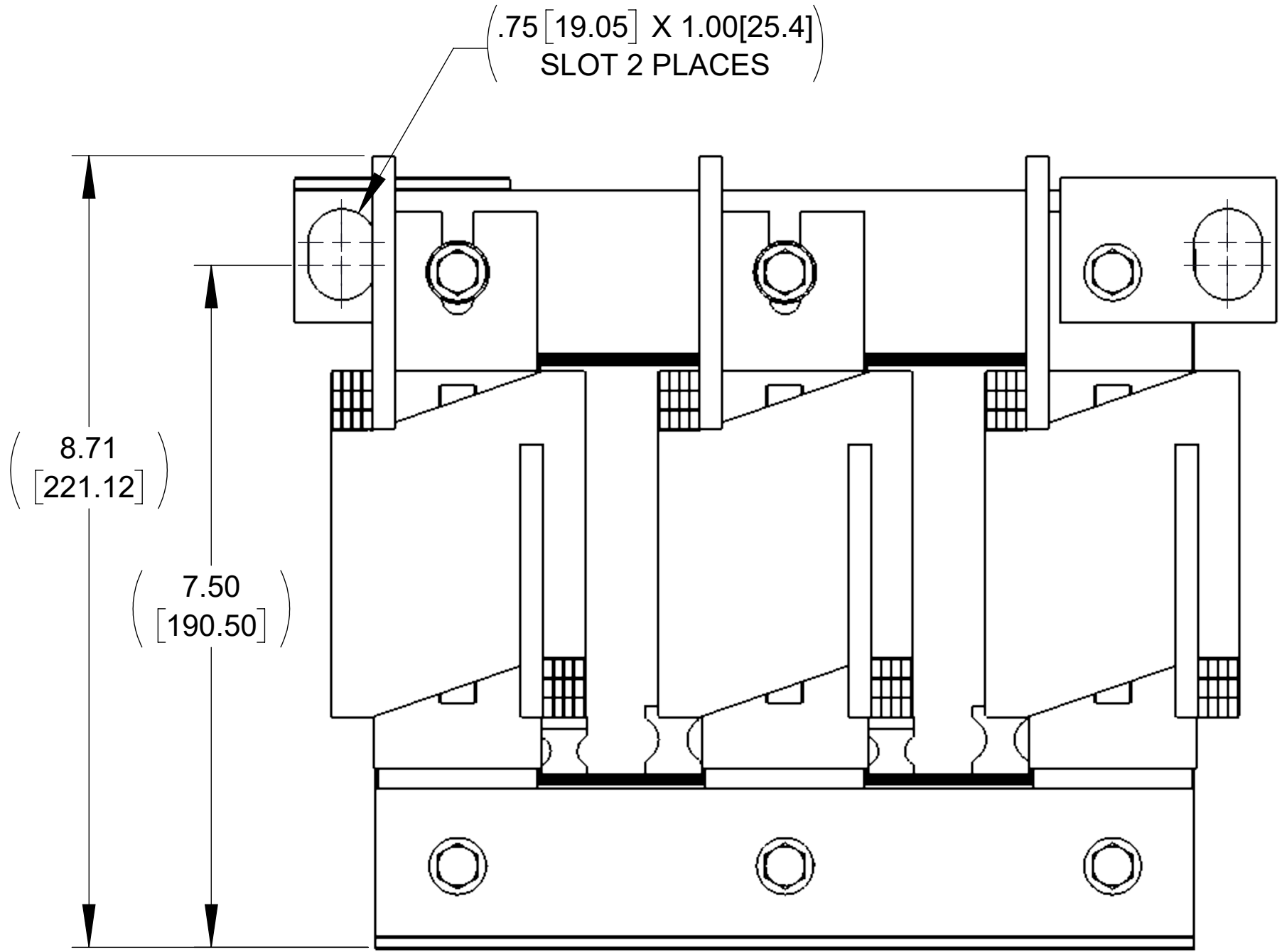
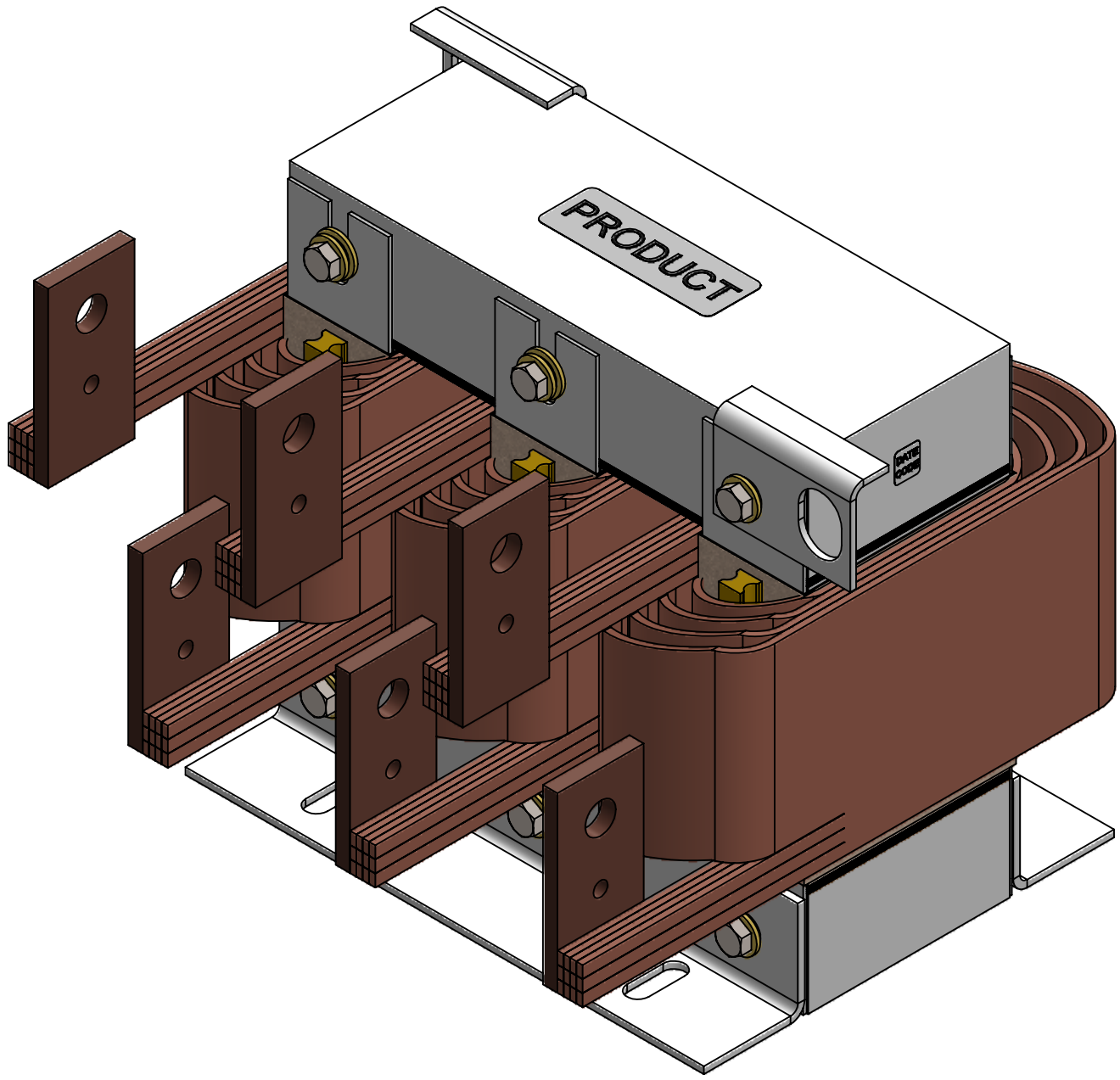
ECO No	DESCRIPTION	REV BY	DATE
M13028	UPDATED TO CURRENT MTE STANDARDS	JD	08/25/20



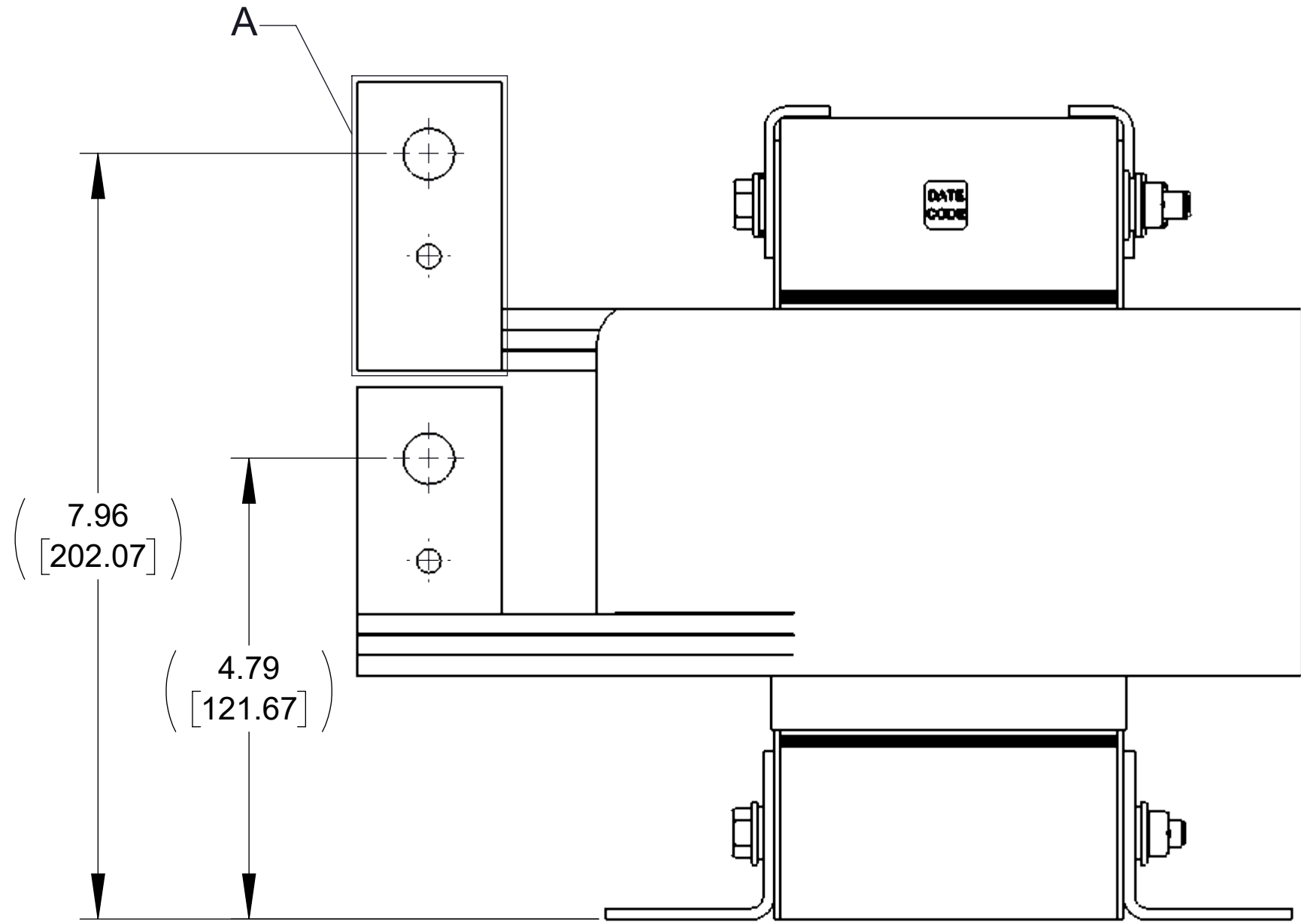
TOP VIEW



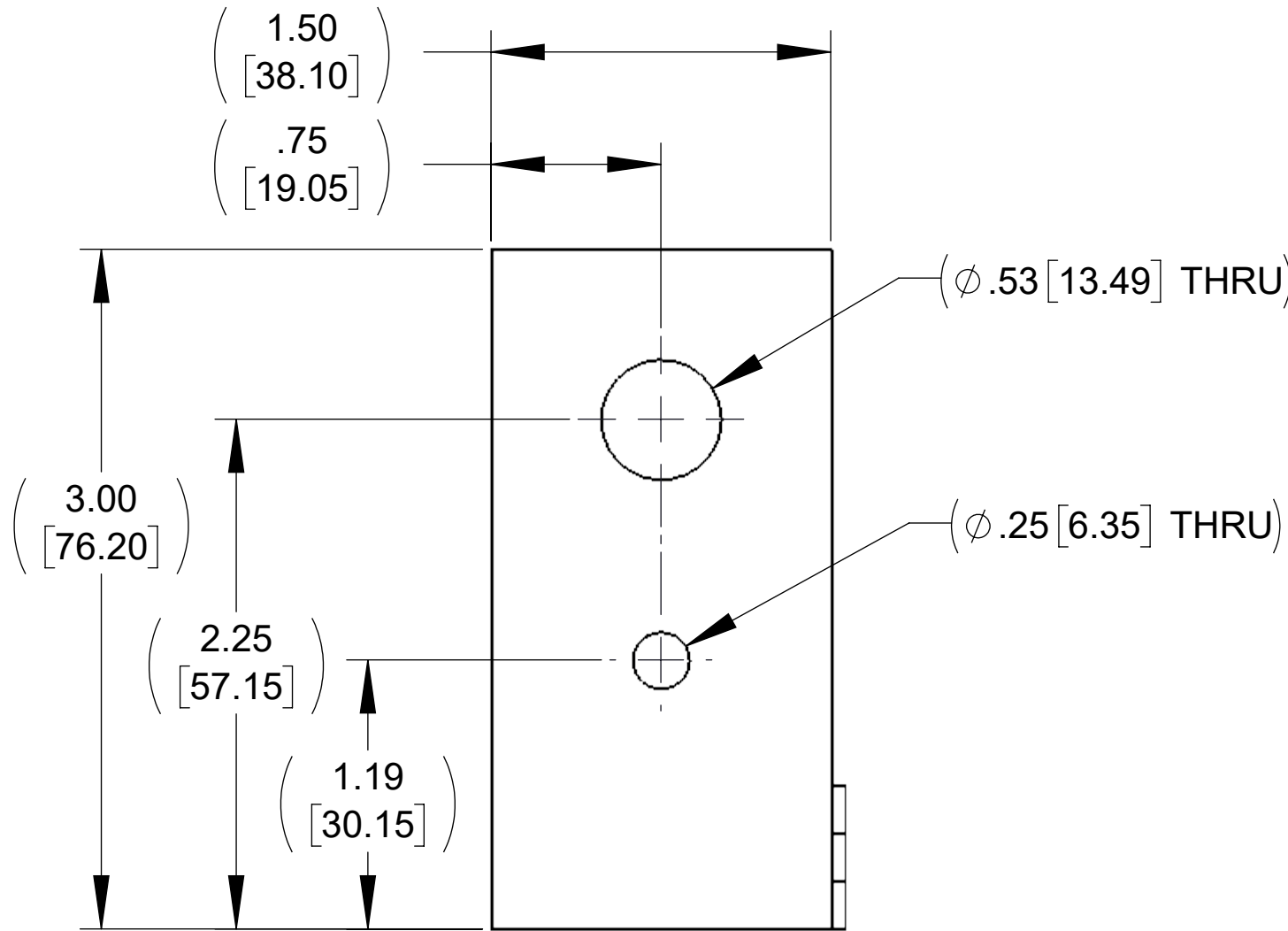
BOTTOM VIEW



FRONT VIEW



SIDE VIEW



DETAIL A  
CUSTOMER CONNECTION  
(6 PLACES)

NOTES:

1. REFER TO USER MANUAL FOR COMPLETE INSTALLATION INSTRUCTIONS.

THE COMPONENT, PART OR ASSEMBLY DESCRIBED IN THIS DOCUMENT MUST COMPLY WITH THE EU(EUROPEAN UNION) DIRECTIVE RoHS2		DRAWN BY: RKT	DATE 06/09/09	CONFIDENTIAL AND PROPRIETARY INFORMATION THIS DOCUMENT CONTAINS CONFIDENTIAL AND PROPRIETARY INFORMATION OF MTE CORPORATION AND MAY NOT BE USED, COPIED OR DISCLOSED TO OTHERS EXCEPT WITH THE AUTHORIZED WRITTEN PERMISSION OF MTE CORPORATION	
CONTAINS <0.1% OF ANY SVHC BY WEIGHT PER REACH REGULATION		CHECKED BY: JD	DATE 08/25/20		
UNLESS OTHERWISE SPECIFIED DIMENSIONS ARE IN INCHES [MM] TOLERANCES ARE: ANGLES: ± 1 ° 1 PLACE .X: ± .1 [2.5] 2 PLACE .XX: ± .03 [0.76] 3 PLACE .XXX: ± .010 [0.254]		ME APPROVED BY: DP	DATE 08/26/20	DESCRIPTION LINE REACTOR (600 .020mH)	
		RE APPROVED BY: PY	DATE 08/27/20		
				SIZE D	DWG No CD CD RLW-060001
				SCALE 2:3	REV 04
				Sheet1	
				SHEET 1 OF 1	



N83 W13330 Leon Road  
Menomonee Falls, WI 53051 USA  
800.455.4683  
262.253.8200